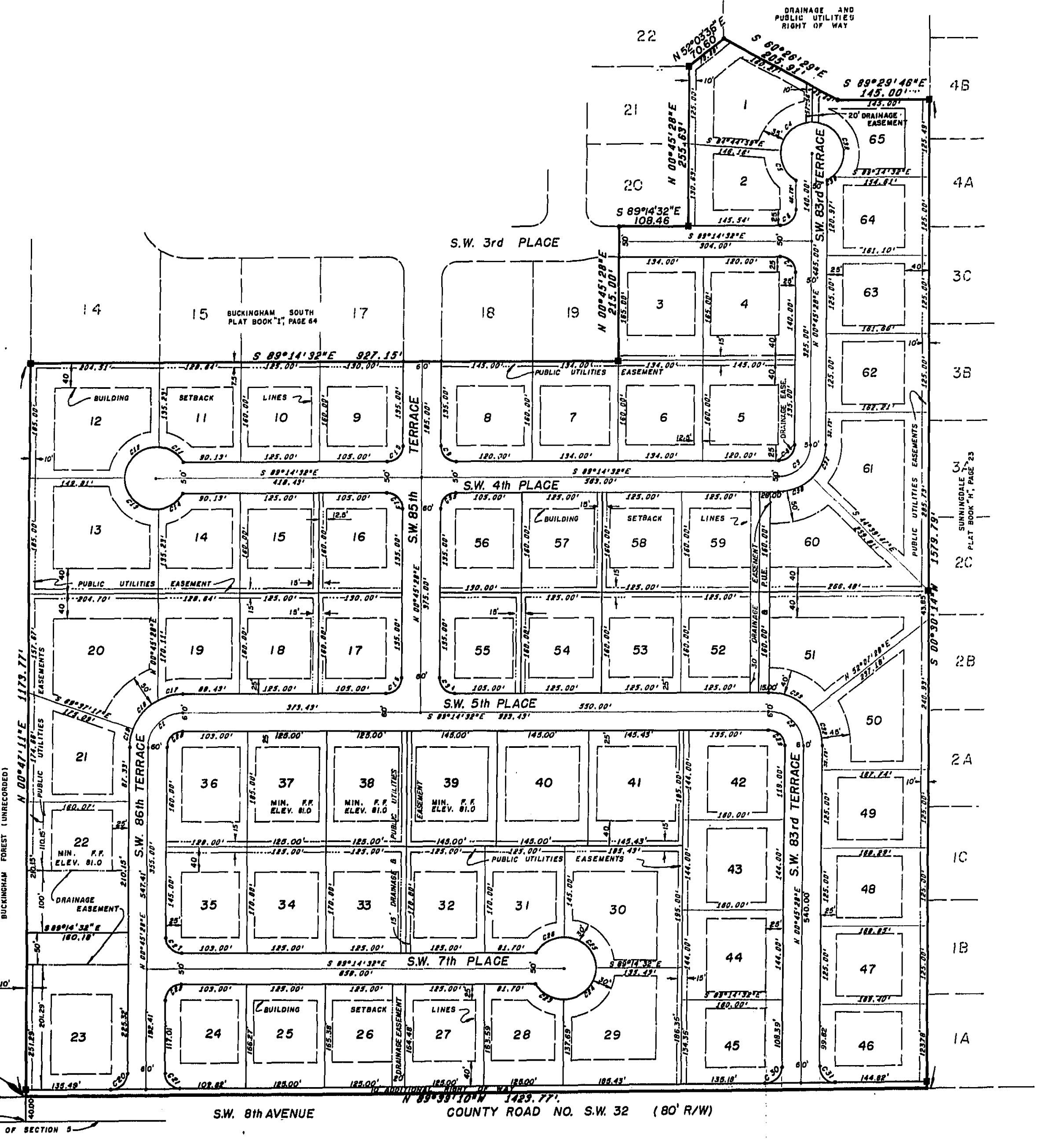
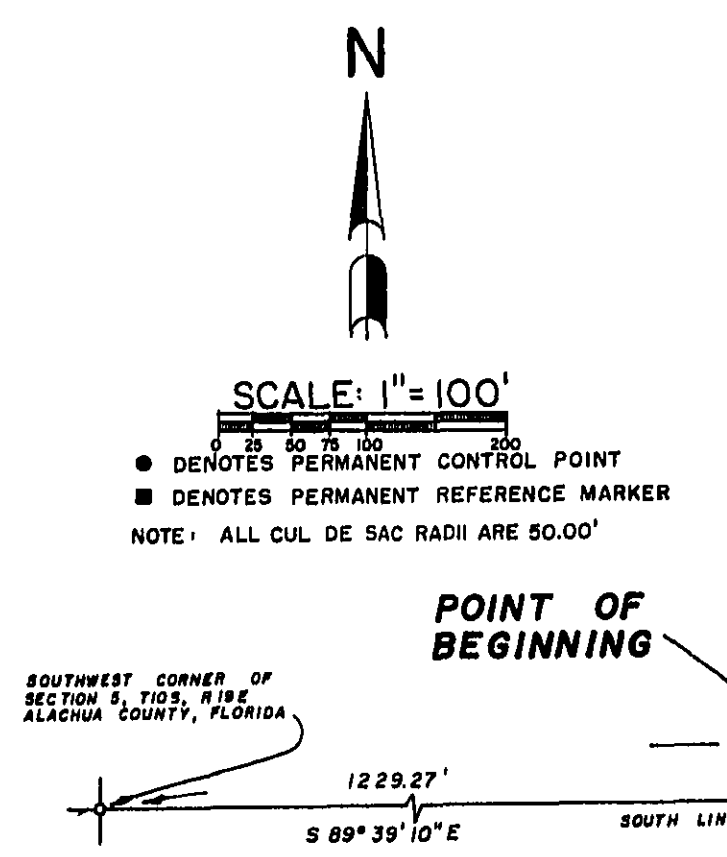


BUCKINGHAM SOUTH UNIT NO. 2

LOCATED IN THE WEST ONE-HALF OF SECTION 5, TOWNSHIP 10 SOUTH, RANGE 19 EAST, ALACHUA COUNTY, FLORIDA

NO	CB	CURVE	TABLE	L	T
1	N 44°41'38"E	77.78'	35.00'	30°00'00"	88.39'
2	S 44°41'38"E	77.78'	35.00'	30°00'00"	88.39'
3	N 44°41'38"E	77.78'	35.00'	30°00'00"	88.39'
4	S 44°41'38"E	77.78'	35.00'	30°00'00"	88.39'
5	N 44°41'38"E	77.78'	35.00'	30°00'00"	88.39'
6	S 44°41'38"E	77.78'	35.00'	30°00'00"	88.39'
7	N 44°41'38"E	77.78'	35.00'	30°00'00"	88.39'
8	S 44°41'38"E	77.78'	35.00'	30°00'00"	88.39'
9	N 44°41'38"E	77.78'	35.00'	30°00'00"	88.39'
10	S 44°41'38"E	77.78'	35.00'	30°00'00"	88.39'
11	N 44°41'38"E	77.78'	35.00'	30°00'00"	88.39'
12	S 44°41'38"E	77.78'	35.00'	30°00'00"	88.39'
13	N 44°41'38"E	77.78'	35.00'	30°00'00"	88.39'
14	S 44°41'38"E	77.78'	35.00'	30°00'00"	88.39'
15	N 44°41'38"E	77.78'	35.00'	30°00'00"	88.39'
16	S 44°41'38"E	77.78'	35.00'	30°00'00"	88.39'
17	N 44°41'38"E	77.78'	35.00'	30°00'00"	88.39'
18	S 44°41'38"E	77.78'	35.00'	30°00'00"	88.39'
19	N 44°41'38"E	77.78'	35.00'	30°00'00"	88.39'
20	S 44°41'38"E	77.78'	35.00'	30°00'00"	88.39'
21	N 44°41'38"E	77.78'	35.00'	30°00'00"	88.39'
22	S 44°41'38"E	77.78'	35.00'	30°00'00"	88.39'
23	N 44°41'38"E	77.78'	35.00'	30°00'00"	88.39'
24	S 44°41'38"E	77.78'	35.00'	30°00'00"	88.39'
25	N 44°41'38"E	77.78'	35.00'	30°00'00"	88.39'
26	S 44°41'38"E	77.78'	35.00'	30°00'00"	88.39'
27	N 44°41'38"E	77.78'	35.00'	30°00'00"	88.39'
28	S 44°41'38"E	77.78'	35.00'	30°00'00"	88.39'
29	N 44°41'38"E	77.78'	35.00'	30°00'00"	88.39'
30	S 44°41'38"E	77.78'	35.00'	30°00'00"	88.39'
31	N 44°41'38"E	77.78'	35.00'	30°00'00"	88.39'
32	S 44°41'38"E	77.78'	35.00'	30°00'00"	88.39'
33	N 44°41'38"E	77.78'	35.00'	30°00'00"	88.39'
34	S 44°41'38"E	77.78'	35.00'	30°00'00"	88.39'
35	N 44°41'38"E	77.78'	35.00'	30°00'00"	88.39'
36	S 44°41'38"E	77.78'	35.00'	30°00'00"	88.39'
37	N 44°41'38"E	77.78'	35.00'	30°00'00"	88.39'
38	S 44°41'38"E	77.78'	35.00'	30°00'00"	88.39'
39	N 44°41'38"E	77.78'	35.00'	30°00'00"	88.39'
40	S 44°41'38"E	77.78'	35.00'	30°00'00"	88.39'
41	N 44°41'38"E	77.78'	35.00'	30°00'00"	88.39'
42	S 44°41'38"E	77.78'	35.00'	30°00'00"	88.39'
43	N 44°41'38"E	77.78'	35.00'	30°00'00"	88.39'
44	S 44°41'38"E	77.78'	35.00'	30°00'00"	88.39'
45	N 44°41'38"E	77.78'	35.00'	30°00'00"	88.39'
46	S 44°41'38"E	77.78'	35.00'	30°00'00"	88.39'
47	N 44°41'38"E	77.78'	35.00'	30°00'00"	88.39'
48	S 44°41'38"E	77.78'	35.00'	30°00'00"	88.39'
49	N 44°41'38"E	77.78'	35.00'	30°00'00"	88.39'
50	S 44°41'38"E	77.78'	35.00'	30°00'00"	88.39'
51	N 44°41'38"E	77.78'	35.00'	30°00'00"	88.39'
52	S 44°41'38"E	77.78'	35.00'	30°00'00"	88.39'
53	N 44°41'38"E	77.78'	35.00'	30°00'00"	88.39'
54	S 44°41'38"E	77.78'	35.00'	30°00'00"	88.39'
55	N 44°41'38"E	77.78'	35.00'	30°00'00"	88.39'
56	S 44°41'38"E	77.78'	35.00'	30°00'00"	88.39'
57	N 44°41'38"E	77.78'	35.00'	30°00'00"	88.39'
58	S 44°41'38"E	77.78'	35.00'	30°00'00"	88.39'
59	N 44°41'38"E	77.78'	35.00'	30°00'00"	88.39'
60	S 44°41'38"E	77.78'	35.00'	30°00'00"	88.39'
61	N 44°41'38"E	77.78'	35.00'	30°00'00"	88.39'
62	S 44°41'38"E	77.78'	35.00'	30°00'00"	88.39'
63	N 44°41'38"E	77.78'	35.00'	30°00'00"	88.39'
64	S 44°41'38"E	77.78'	35.00'	30°00'00"	88.39'
65	N 44°41'38"E	77.78'	35.00'	30°00'00"	88.39'



LEGAL DESCRIPTION

A TRACT OF LAND SITUATED IN THE WEST ONE-HALF OF SECTION 5, TOWNSHIP 10 SOUTH, RANGE 19 EAST, ALACHUA COUNTY, FLORIDA, SAID TRACT OF LAND BEING MORE PARTICULARLY DESCRIBED AS FOLLOWS:

COMMENT: AT THE SOUTHWEST CORNER OF SECTION 5, T10S, R19E AND RUN 889°39'10"E ALONG THE SOUTH LINE OF SAID SECTION 5 AND THE CENTERLINE OF S.W. 8TH AVENUE, 1229.27 FEET; THENCE RUN N00°41'38"E, 40.00 FEET TO THE NORTH RIGHT OF WAY LINE OF SAID S.W. 8TH AVENUE AND THE POINT OF BEGINNING; THENCE CONTINUE S00°41'38"E, 1175.77 FEET TO THE SOUTHWEST CORNER OF BUCKINGHAM SOUTH, A SUBDIVISION AS RECORDED IN PLAT BOOK # 21, PAGE 84 OF THE PUBLIC RECORDS OF ALACHUA COUNTY, FLORIDA; THENCE RUN ALONG THE SOUTH LINE OF SAID BUCKINGHAM SOUTH WITH THE FOLLOWING COURSE AND DISTANCES: 889°39'10"E, 297.00 FEET; N00°41'38"E, 215.00 FEET; S88°14'32"E, 130.00 FEET; N00°41'38"E, 255.83 FEET; N52°03'38"E, 70.00 FEET; S88°28'28"E, 205.81 FEET; S88°28'28"E, 145.00 FEET TO THE WEST LINE OF SAID SUNNINGDALE, A SUBDIVISION AS RECORDED IN PLAT BOOK # 11, PAGE 23 OF THE PUBLIC RECORDS OF ALACHUA COUNTY, FLORIDA; THENCE RUN S00°30'14"W ALONG THE WEST LINE OF SAID SUNNINGDALE, 1579.79 FEET TO THE NORTH RIGHT OF WAY LINE OF SAID S.W. 8TH AVENUE; THENCE RUN N89°39'10"E ALONG SAID RIGHT OF WAY LINE, 1483.77 FEET TO THE POINT OF BEGINNING, SAID TRACT OF LAND CONTAINING 42.589 ACRES, MORE OR LESS.

DEDICATION

WE THE UNDERSIGNED DO HEREBY CERTIFY THAT WE ARE THE OWNERS OF BUCKINGHAM SOUTH UNIT NO. 2 AS DESCRIBED ABOVE AND WE DO HEREBY DEDICATE TO THE PUBLIC FOREVER THE STREETS, EASEMENTS AND RIGHTS OF WAY AS SHOWN ON THIS PLAT AND SAID STREETS ARE PAVED AND DRAINED OR WILL BE PAVED AND DRAINED BEFORE ANY LOTS ARE SOLD.

PAUL MCARTHUR, INC.
 W. Thomas Howard, WITNESS
 Sharon L. McArthur, WITNESS
 Paul W. McArthur, PRESIDENT
 James B. Owens, SECRETARY

STATE OF FLORIDA, COUNTY OF ALACHUA

I HEREBY CERTIFY THAT ON THIS DAY PERSONALLY APPEARED BEFORE ME PAUL W. MCARTHUR AND SHARON L. MCARTHUR, PRESIDENT AND SECRETARY RESPECTIVELY OF PAUL MCARTHUR, INC. AND KNOWN TO ME TO BE THE PERSONS HEREIN DESCRIBED AND ACKNOWLEDGE THAT THEY EXECUTED THIS INSTRUMENT AS THEIR FREE ACT AND DEED.

WITNESS MY HAND AND OFFICIAL SEAL THIS 15th DAY OF August, 1977.
 NOTARY PUBLIC James B. Owens, MY COMMISSION EXPIRES 9/30/77

CERTIFICATE OF SURVEYOR

I HEREBY CERTIFY THAT THIS IS A TRUE AND CORRECT REPRESENTATION OF THE ABOVE DESCRIBED LANDS AND SUBDIVISION THEREOF AND THAT SAID LANDS HAVE BEEN SURVEYED UNDER MY DIRECTION AND SUPERVISION AND THAT PERMANENT REFERENCE MARKERS HAVE BEEN SET AND THE SURVEY DATA COMPLIES WITH THE REQUIREMENTS OF CHAPTER 177 OF THE FLORIDA STATUTES.

DATE: 8-29-77 BY: James B. Owens
 REG. LAND SURVEYOR-PLAT. CERT. NO. 840

CERTIFICATE OF APPROVAL FOR ALACHUA COUNTY, FLORIDA

WE THE UNDERSIGNED DO HEREBY CERTIFY THAT THIS PLAT CONFORMS TO THE REQUIREMENTS OF ALACHUA COUNTY ORDINANCES AND REGULATIONS AS FOLLOWS:

ENGINEERING REQUIREMENTS	Chas. E. Schaeffer	9-8-77
PLANNING, ZONING AND OTHER COUNTY SERVICE REQUIREMENTS NOT OTHERWISE LISTED	Frank R. Spence	9-9-77
WATER AND SEWER REQUIREMENTS	B. C. Coffey	9-9-77
UTILITIES REQUIREMENTS	Richard J. Owens	9-12-77
FORM AND LEGALITY	Chas. E. Schaeffer	9-15-77
APPROVED BY ALACHUA COUNTY	James B. Owens	9-14-77

FILED FOR RECORD THIS 15th DAY OF September, 1977
 D. D. Owens, CLERK
 DEPUTY CLERK

CONSENT OF MORTGAGEE

KNOW YE ALL MEN BY THESE PRESENTS THAT FIRST FLORIDA SAVINGS AND LOAN ASSOCIATION HOLDERS OF THAT CERTAIN MORTGAGE FILED FOR RECORD IN OFFICIAL RECORD BOOK 1008 PAGE 880 OF THE PUBLIC RECORDS OF ALACHUA COUNTY, FLORIDA DO HEREBY CONSENT TO THIS PLAT AND JOIN IN THE DEDICATION SHOWN HEREON.

Michael E. Davis, WITNESS
 James B. Owens, PRESIDENT
 Sharon L. McArthur, WITNESS
 James B. Owens, SECRETARY

STATE OF FLORIDA, COUNTY OF ALACHUA

I HEREBY CERTIFY THAT ON THIS DAY PERSONALLY APPEARED BEFORE ME JAMES B. OWENS AND B. C. COFFEY, PRESIDENT AND SECRETARY RESPECTIVELY OF FIRST FLORIDA SAVINGS AND LOAN ASSOCIATION, AND KNOWN TO ME TO BE THE PERSONS HEREIN DESCRIBED AND ACKNOWLEDGE THAT THEY EXECUTED THIS INSTRUMENT AS THEIR FREE ACT AND DEED FOR THE PURPOSES HEREIN EXPRESSED.

WITNESS MY HAND AND OFFICIAL SEAL THIS 13th DAY OF Sept. 1977.
 NOTARY PUBLIC Marvin A. Brodsky, MY COMMISSION EXPIRES Sept. 2, 1980

NOTES:

ALL LOT ACCESS SHALL BE FROM INTERIOR DEDICATED STREETS AS SHOWN ON THIS PLAT.

THERE SHALL BE NO ACCESS TO S.W. 8TH AVENUE FROM LOTS 23, 24, 25, 26, 27, 28, 29, 45, OR 46.

10-12-90 AFFIDAVIT OF LAND SURVEYORS - SEE O.R. 1738 P. 299