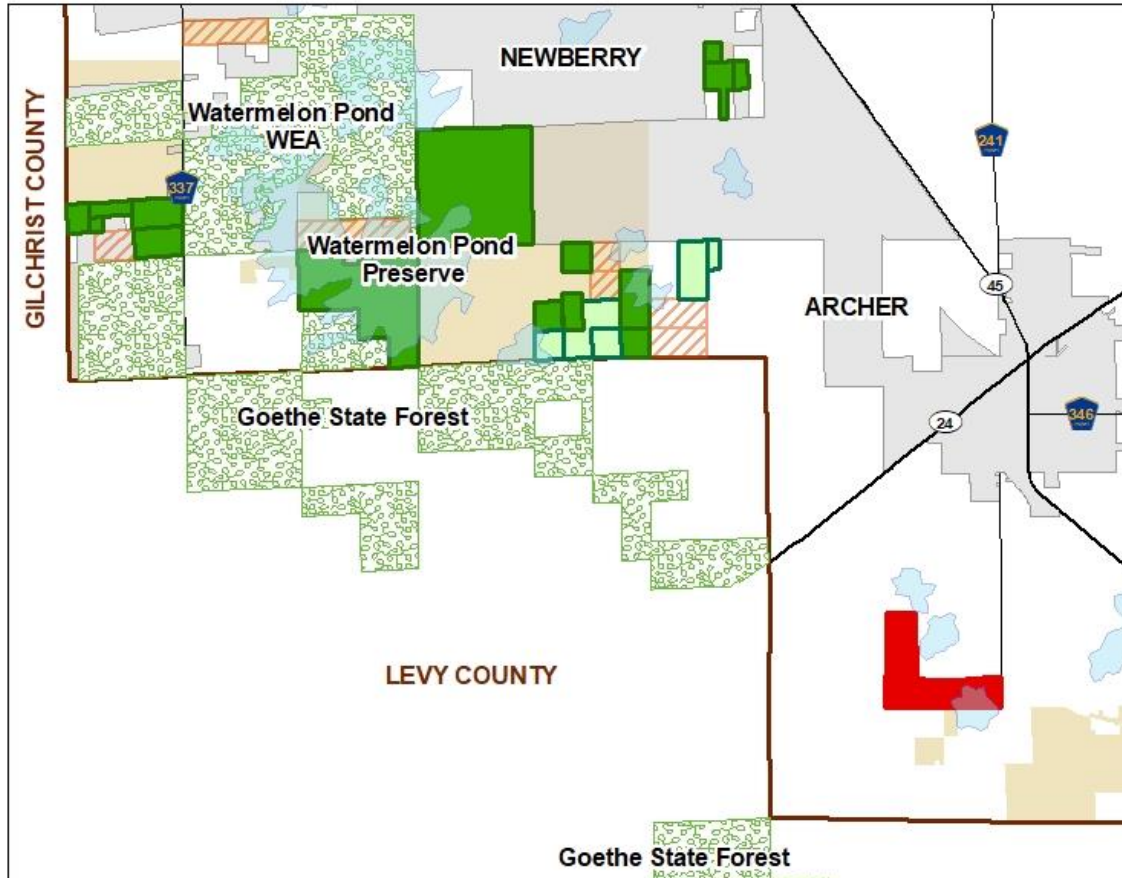




Lizzy Robinson* - Batey Location Map



Legend

- Batey Parcel (244.91 ac)
- ACF Preserve
- Conservation Easement
- Partner Conservation Lands
- Active Acquisition List
- Lakes
- CountyBoundary
- Municipal Boundaries
- ACF Project Areas



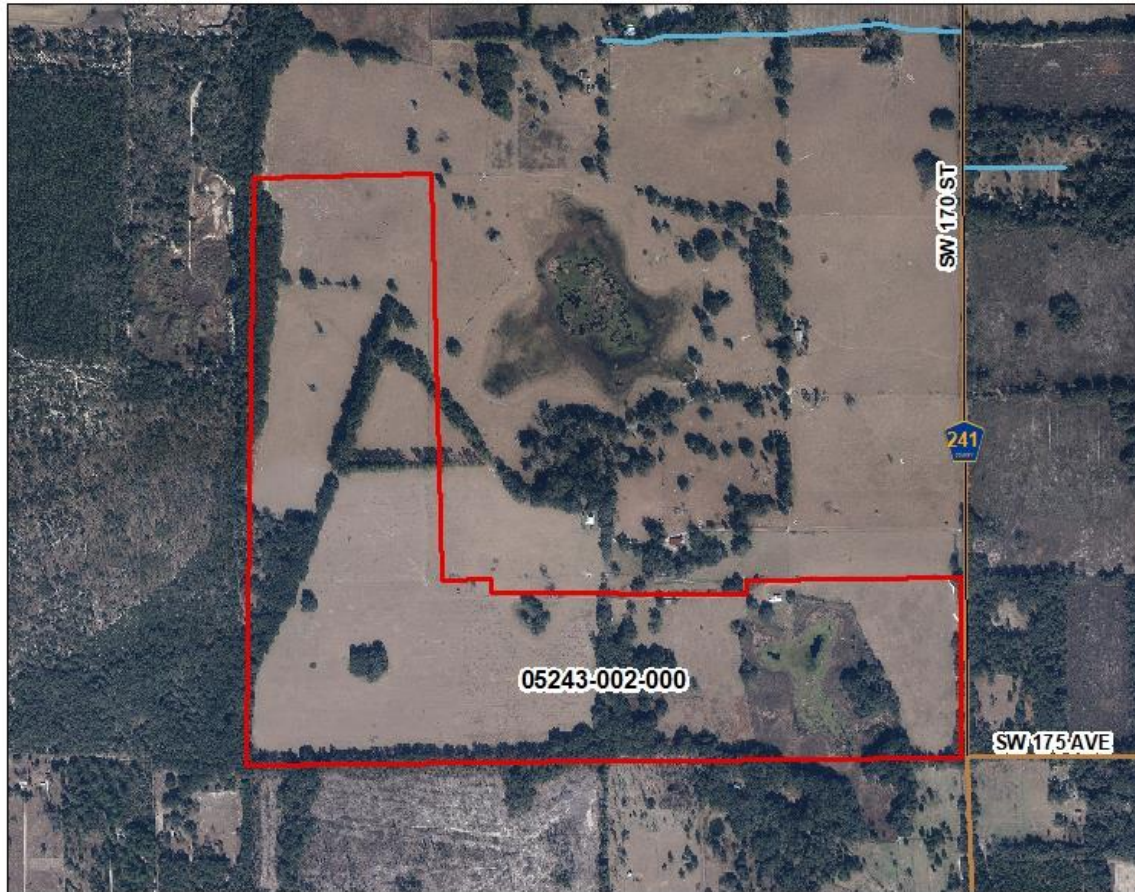
* Parcel is geographically closest to this project area (adjacent), but it is not within the original boundary.



DISCLAIMER: This map and the spatial data it contains are made available as a public service, to be used for reference purposes only. The Alachua County Environmental Protection Department provides this information AS IS without warranty of any kind. The quality of the data is dependent on the various sources from which each data layer is obtained.



Lizzie Robinson* - Batey Parcel Map



Legend

- Batey Parcel (244.91 ac)
- Roadway Classification**
- Private, Unincorporated
- Public, County Maintained



* Parcel is geographically closest to this project area (adjacent), but it is not within the original boundary.

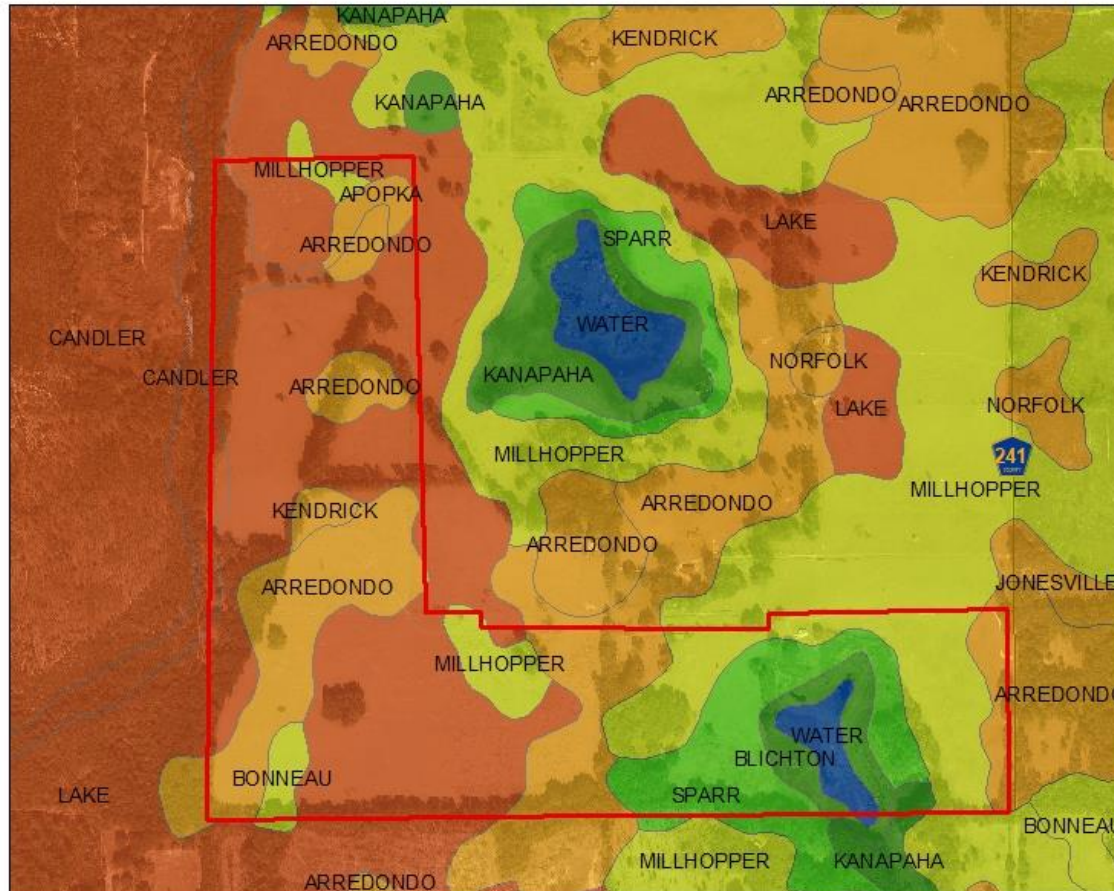


0 0.25 0.5 Miles

DISCLAIMER: This map and the spatial data it contains are made available as a public service, to be used for reference purposes only. The Alachua County Environmental Protection Department provides this information AS IS without warranty of any kind. The quality of the data is dependent on the various sources from which each data layer is obtained.



Lizzie Robinson* - Batey Soil Drainage Map



Legend

- Batey Parcel (244.91 ac)
- Soil Drainage**
- EXCESSIVELY DRAINED
- WELL DRAINED
- MODERATELY WELL DRAINED
- SOMEWHAT POORLY DRAINED
- POORLY DRAINED
- WATER



* Parcel is geographically closest to this project area (adjacent), but it is not within the original boundary.



DISCLAIMER: This map and the spatial data it contains are made available as a public service, to be used for reference purposes only. The Alachua County Environmental Protection Department provides this information AS IS without warranty of any kind. The quality of the data is dependent on the various sources from which each data layer is obtained.