

JOINT PLANNING DISCUSSION

ENHANCING LAKE ALTO ACCESS &
COMMUNITY AMENITIES

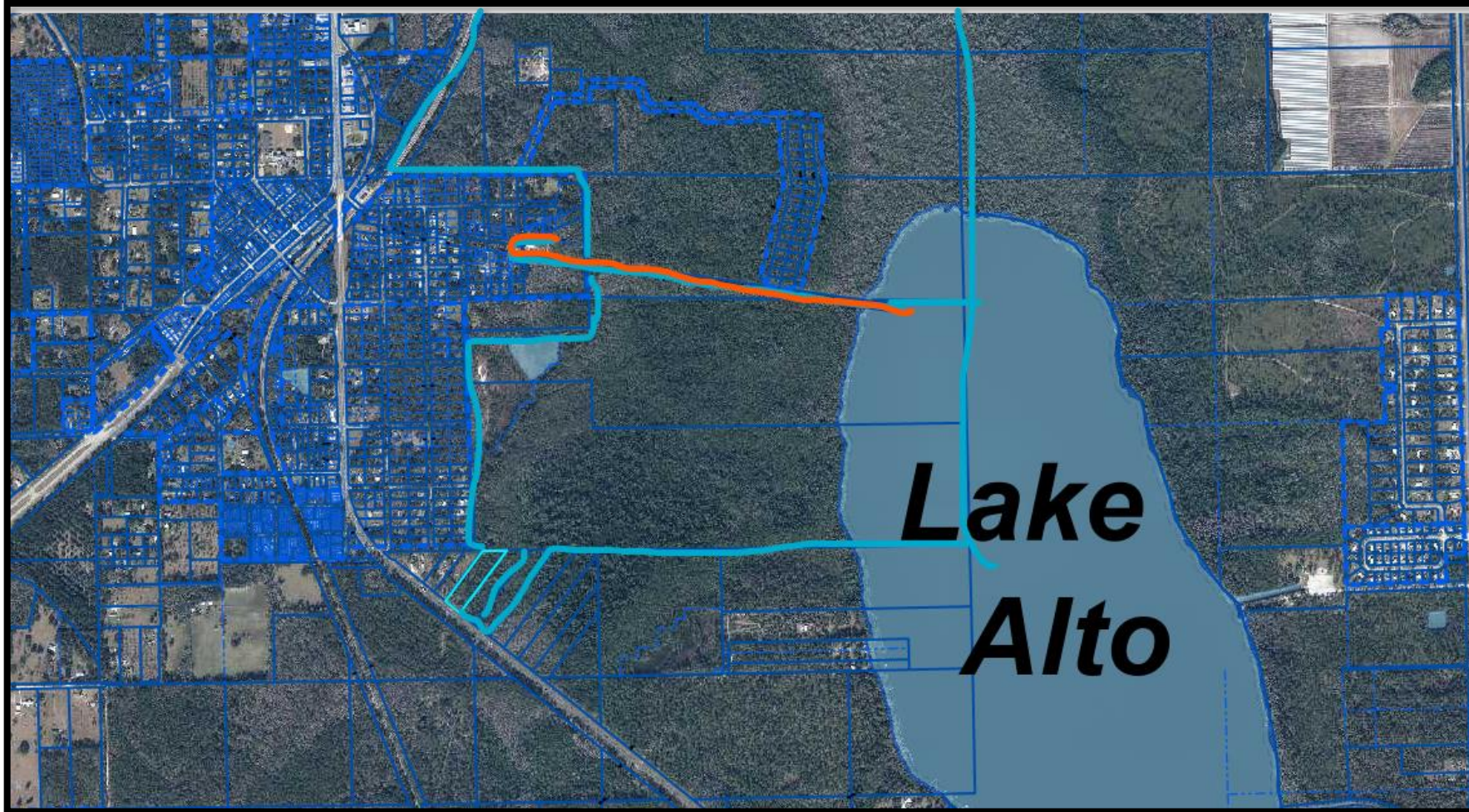
Bike trail connections would further improve
regional access and sustainable mobility.

LAKE ALTO

Lake Alto is already a treasured part of our community. With collaborative planning and strategic investment, it can become an even greater destination — one that supports health, recreation, and economic vitality while preserving the character and charm of our area.



LAKE ALTO OLD FLORIDA IN ITS NATURAL STATE



Now that both sides of the lake are protected as Alachua County greenspace with convenient access from Highway 301, the County is uniquely positioned to develop this area into a premier showcase of natural beauty—enhancing quality of life and attracting visitors to the region.



DISCUSSION

- This joint discussion will focus on the possibility of developing enhanced walking paths, improved parking access off Highway 301, and a welcoming public space that highlights the natural beauty of the lake. By incorporating landscaped trails, safe entry points, and well-designed parking areas, we can create an inviting environment that promotes outdoor activity, eco-tourism, and community pride.
- Bike trail connections would further improve regional access and sustainable mobility.

Keeping Waldo Green: Growth That Protects What We Love



Waldo's natural landscape is not vacant land — it is habitat, heritage, and identity.



Our goal is to enhance access to Lake Alto and the surrounding green space without disturbing the wildlife that calls it home.

Economic Development in Waldo should:



Economic development in Waldo should:

- Protect natural habitats and wildlife corridors
- Use low-impact trail design and permeable surfaces
- Preserve tree canopy and native vegetation
- Avoid overdevelopment and high-density intrusion
- Promote eco-tourism rather than commercial overbuild
- We are not looking to change the character of Waldo. We are looking to highlight it.
- Bike trail connections would further improve regional access and sustainable mobility.
- A Gainesville–Waldo bike path strengthens eco-friendly tourism opportunities.

OUR VISION

- Leverage Waldo's existing natural green space to
- Drive sustainable economic growth.
- Enhance Lake Alto as a destination for recreation and eco-tourism
- Create welcoming public access from the Highway 301 corridor
- Bike trail connections would further improve regional access and sustainable mobility.
- Encourage active lifestyles: Safe accessible bike/walking paths promote physical activity for all ages, reducing health risks and building resilience.



Why the Gainesville–Waldo Trail Matters

- Economic + Environmental Benefits:
- Draws cyclists, hikers, and nature tourists.
- Promotes low-impact travel aligned with conservation goals.
- Bike Trails have been proven to enhance small city opportunities.
- Expands access without disturbing wildlife habitats.
- Boosts potential for small business development.
- Bike trail connections would further improve regional access and sustainable mobility.
- A Gainesville–Waldo bike path strengthens eco-friendly tourism opportunities.





Expanding Regional Connectivity

- A Regional Bike Path Connecting Gainesville → Waldo → Lake Alto → Beyond
- Provides safe, scenic multi-use access to natural amenities. Enhancing Safety with a dedicated bike trail.
- Supports eco-tourism and bicycle-based recreation.
- Connects Waldo/Alachua County to the broader Florida Greenway trail network.
- Encourages healthy, car-free travel options. Paved flat trails like the Waldo Road Greenway are often wheelchair and stroller friendly.
- Bike trail connections would further improve regional access and sustainable mobility.

**Why Green
Space Drives
Economic
Development
A Gainesville–
Waldo bike
path
strengthens
eco-friendly
tourism
opportunities.**

ATTRACTS VISITORS
AND OUTDOOR
RECREATION
ENTHUSIASTS.

ENCOURAGES SMALL
BUSINESS GROWTH
(FOOD VENDORS,
OUTFITTERS,
EVENTS)

INCREASES
SURROUNDING
PROPERTY VALUES.

IMPROVES
COMMUNITY HEALTH
AND QUALITY OF LIFE

Education & Creative Opportunities

- Interactive Learning Zones: Imagine trail-side poetry posts, kindness coloring stations, or scavenger hunts that teach emotional intelligence.
- Community Art Projects: Handprint murals, bike-themed sculptures, or storyboards featuring local history could turn the path into a living gallery.
- Rest Stops with benches, shade and refill stations
- Educational Signage: local wildlife, local history,
- Community Development: Local Pride, small business growth, increased tourism.





PARTNERING TOGETHER

- The City of Waldo looks forward to partnering with Alachua County to explore thoughtful improvements around Lake Alto, one of our area's most beautiful and underutilized natural resources. With its scenic shoreline, peaceful setting, and convenient location along Highway 301, Lake Alto offers tremendous potential for expanded recreational opportunities that would benefit both residents and visitors.

STRONGER TOGETHER

