

# Alachua County SS4A Action Plan

March 2026

# Agenda

- Overview of Safety Action Plan
- Strategies
- Prioritized Studies
- Evaluation
- Next Steps

# **Overview of Safety Action Plan**



# Safe System Approach



# Key Tasks



Analyzed crash data



Developed High Injury Networks



Engaged Community



Collaborated with Task Force



Reviewed existing policies



Developed projects & strategies



Prioritized projects



Created Safety Action Plan

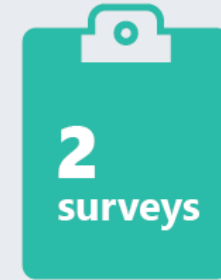
# Community Engagement



## COMMUNITY ENGAGEMENT BY THE NUMBERS:



**4** TASK FORCE MEETINGS



**2** surveys

**2,600+** survey responses



**100,000+**

ENGAGEMENTS ON SOCIAL MEDIA

**5,500+**

VISITS TO PROJECT WEBSITE

**3** public workshops

NOVEMBER 13, 2024 AT HARN MUSEUM OF ART

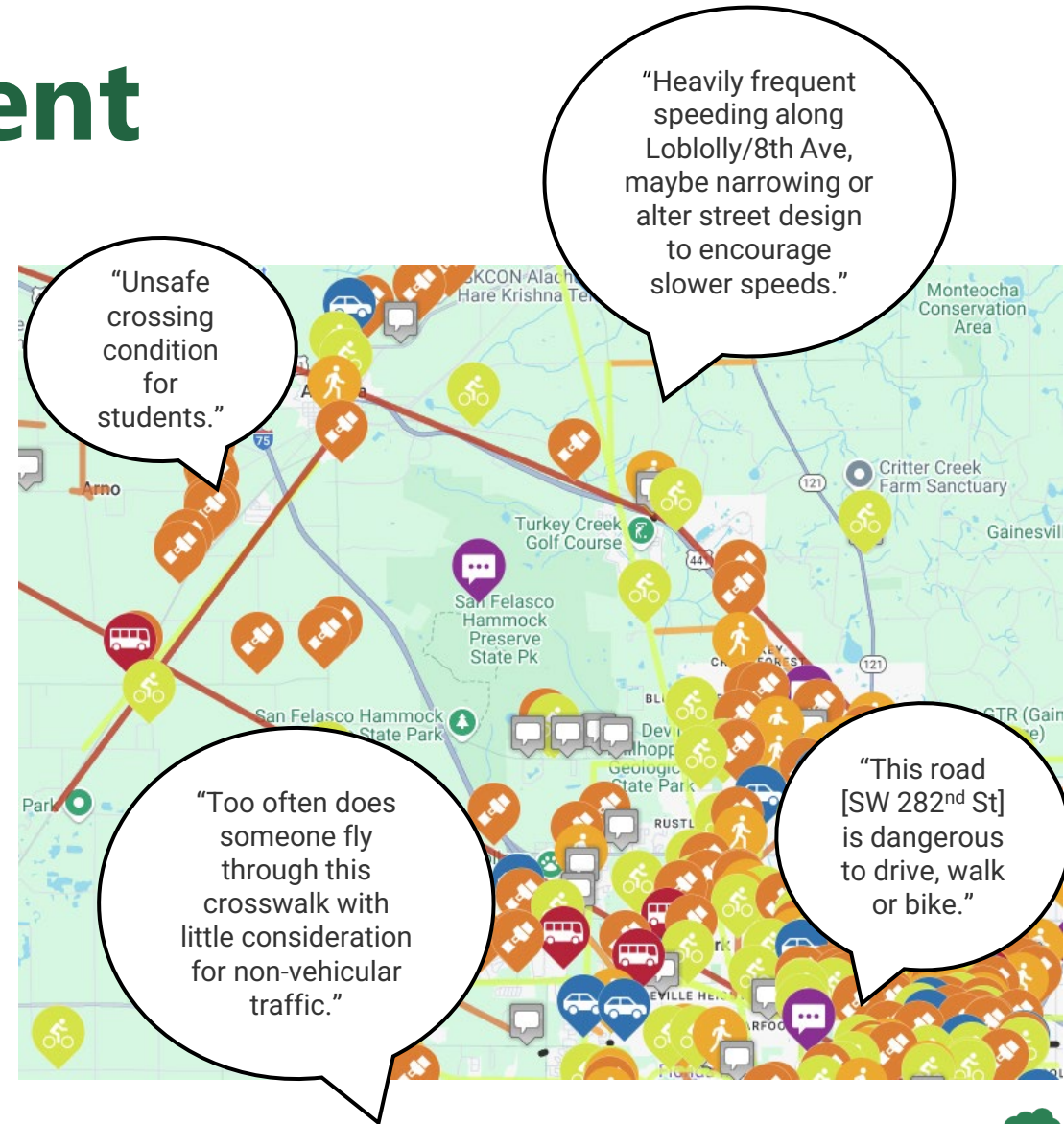
MAY 20, 2025 AT THOMAS CENTER

SEPTEMBER 23, 2025 AT SWICK HOUSE



# Community Engagement

- An **online map** (with over 700 responses) used in tandem with the survey revealed the following themes:
  - Desire to **reduce driver speed**
  - Desire for **safety improvements** at particular intersections
  - Desire to **increase safe crossing opportunities, especially near schools**
  - Concern for **roadway maintenance** regarding bicyclist safety



Alachua County Awarded **\$262,500**  
with local match of **\$87,500**  
Total available for **Alachua  
County Action Plan: \$350,000**

FEBRUARY 2023



Safety Action Plan:  
**Project initiated**

JULY 2024



Collaboration with **Task  
Force** continuously  
throughout the project

IN PROGRESS

**1st and 2nd Rounds of Public Outreach** are  
conducted for the project with **Stakeholder  
Meetings, Surveys, & Public Workshops**

NOVEMBER 2024 & MAY 2025

Identify safety metrics  
and track performance

SEPTEMBER 2025

Countywide **Crash  
Analysis & High  
Injury Network**

MARCH 2025



Adoption of Vision  
Zero Resolution

NOVEMBER 2024



**Final Round of Public Outreach** is  
conducted for the project with **Stakeholder  
Meetings, Surveys, & Public Workshops**

SEPTEMBER 2025



Identify quick-build  
and permanent  
construction projects

JULY 2025 TO  
SEPTEMBER 2025



MARCH 2026



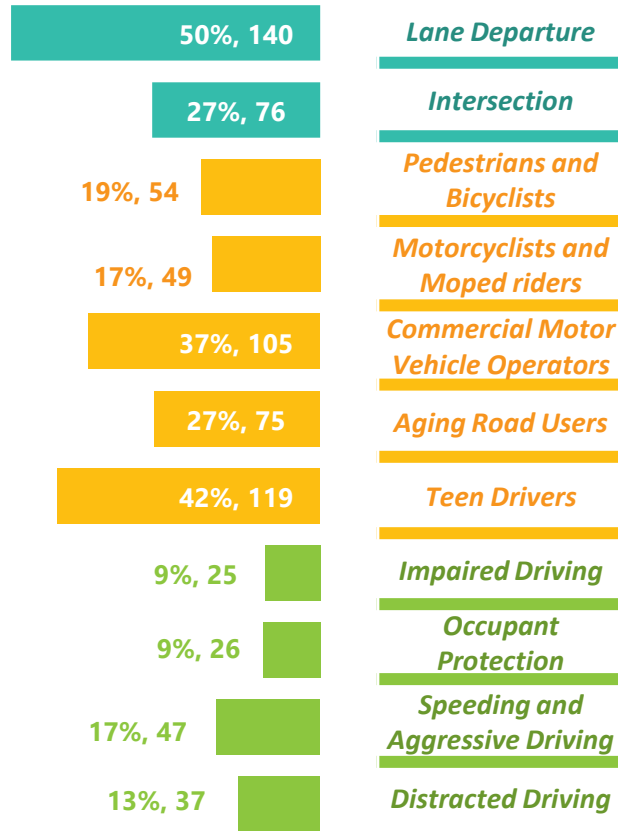
Publish Safe Streets  
and Roads for All  
Safety Action Plan



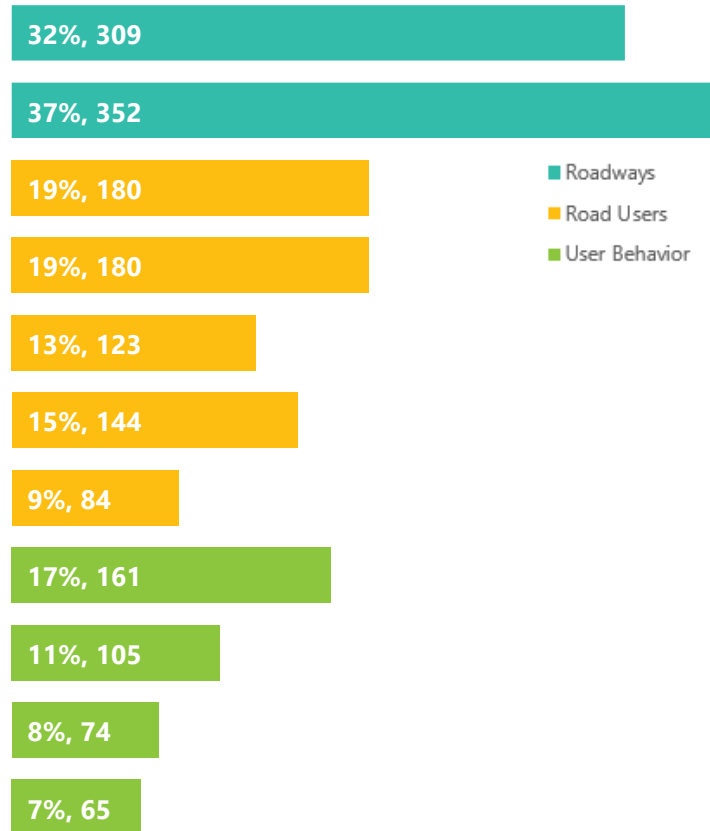
# Crash Analysis

**36,478** Total Crashes    **953** Serious Injury Crashes    **281** Fatal Crashes

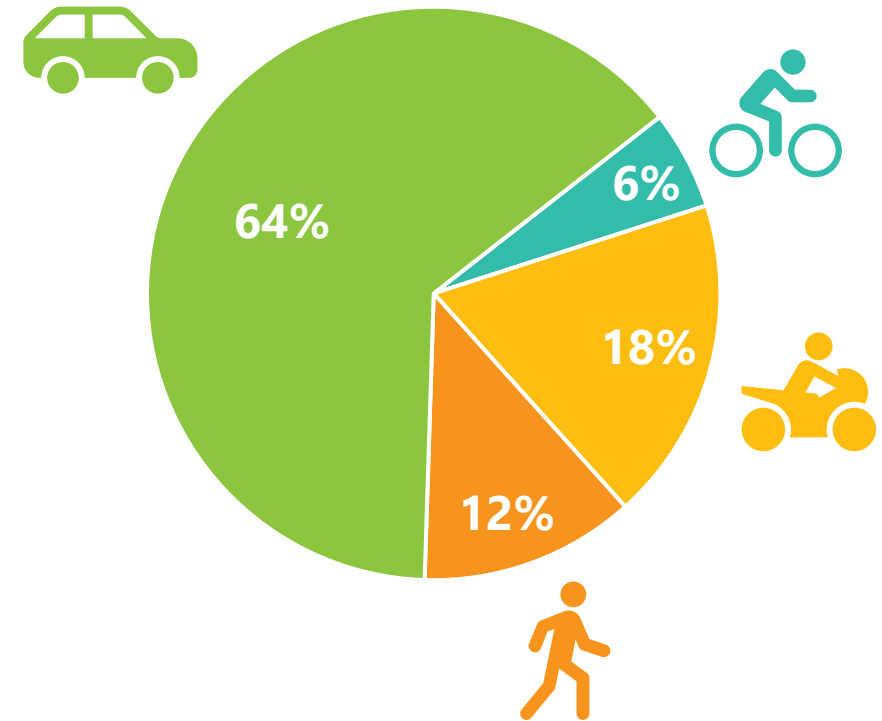
## Fatal Crashes



## Serious Injury Crashes

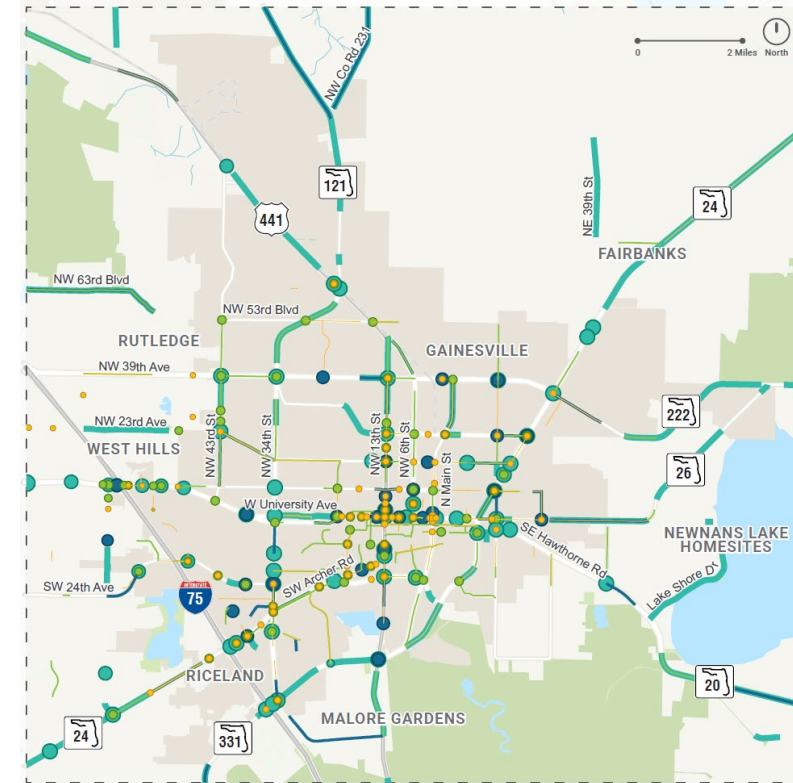
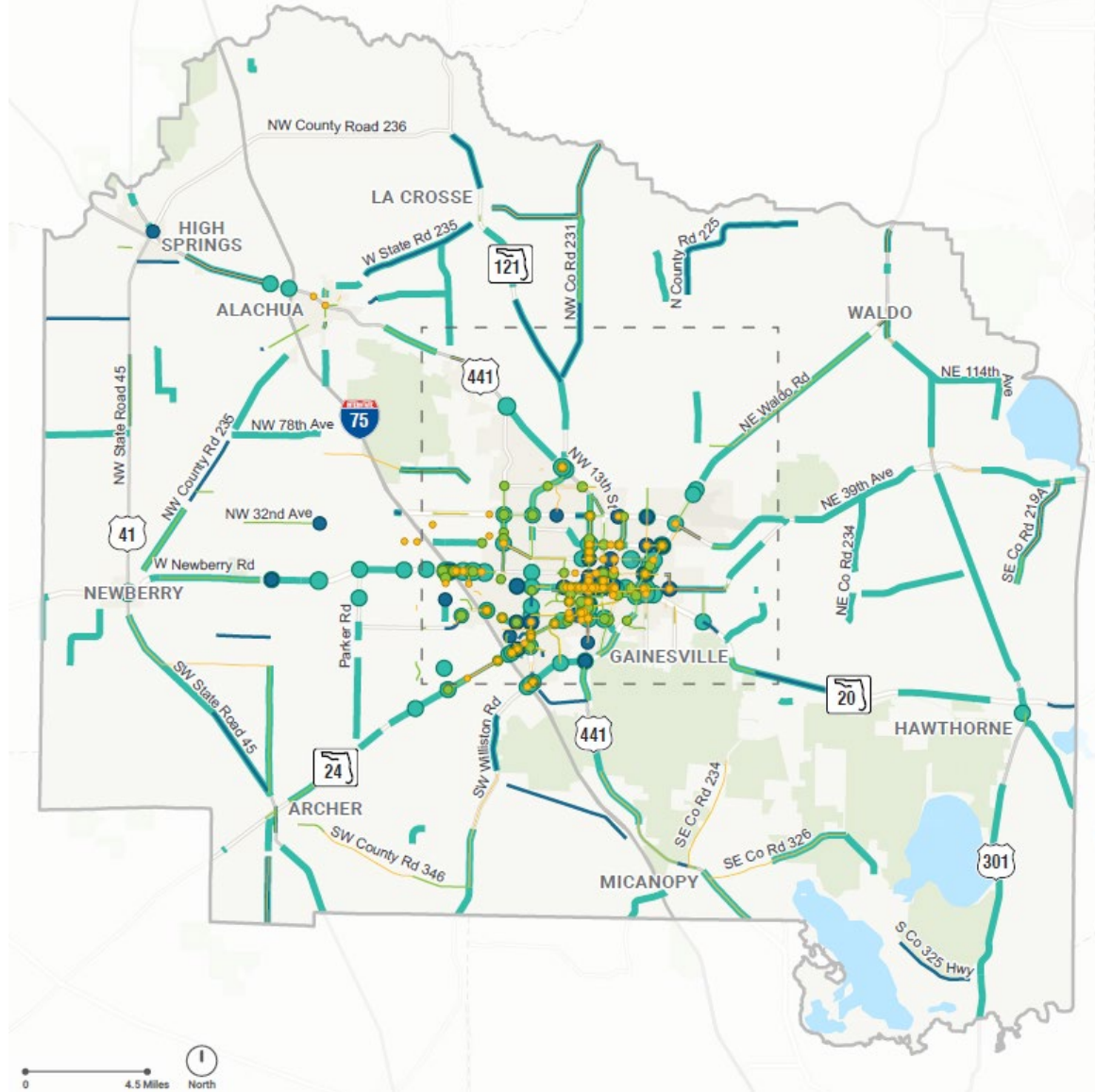


## Fatal & Serious Injury Crashes by Mode



Crash data from Jan 2019-June 2024

# High Injury Network



## LEGEND

- Pedestrian High Injury Network Intersections
- Pedestrian High Injury Network Segments
- Bicycle High Injury Network Intersections
- Bicycle High Injury Network Segments
- Motorcycle High Injury Network Intersections
- Motorcycle High Injury Network Segments
- Vehicle High Injury Network Intersections
- Vehicle High Injury Network Segments

# Strategies



# Strategies



## Urban & Rural Roadway Strategies

Aims to improve safety across rural and urban roads by implementing targeted countermeasures to reduce high-risk crash types.



## Signalized Intersection Strategies

Aims to improve safety across signalized intersections by implementing targeted countermeasures to reduce high-risk crash types.



## Vulnerable Road User Strategies

Focuses on improving pedestrian and bicyclist safety through better lighting, safer crossings, updated signal timing, and design standards that enhance mobility.



## Education Strategies

Promotes safer road use behavior through community outreach, school programs, and educational materials focused on traffic safety and new road designs.



## Enforcement Strategies

Aims to reduce crashes by targeting high-risk areas with increased police presence and piloting automated speed enforcement to promote safer driving behavior.



## Evaluation Strategies

Focuses on tracking safety improvements and crash outcomes through annual reports, databases, and collaborative efforts to measure the impact of safety projects and guide future investments.

# Systemic Studies



# Systemic Findings



**326**

FATAL OR SERIOUS INJURY **LANE DEPARTURE** CRASHES



**208**

FATAL OR SERIOUS INJURY **LEFT TURN** CRASHES



**207**

FATAL OR SERIOUS INJURY **PEDESTRIAN AND BICYCLE** CRASHES



**84**

FATAL OR SERIOUS INJURY **SPEEDING RELATED** CRASHES



**336**

FATAL OR SERIOUS INJURY CRASHES AT **SIGNALIZED INTERSECTIONS**

# Study Categories



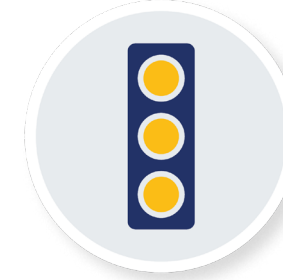
Rural Lane Departure



Posted Speed Greater than 40 MPH



Signalized Left Turn Crashes



Red Light Running Crashes



Bicycle and Pedestrian Crashes



Corridors with Most Fatal/Serious Injuries

# Systemic Countermeasures



Advance Curve Signage

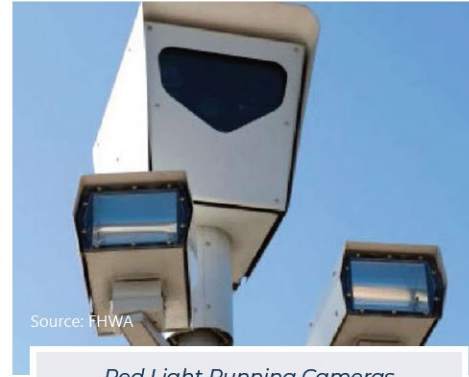


Audible and Vibratory Treatment



Widen paved roadway shoulder to 4-foot and install SafetyEdge

## Rural Lane Departure



Red Light Running Cameras

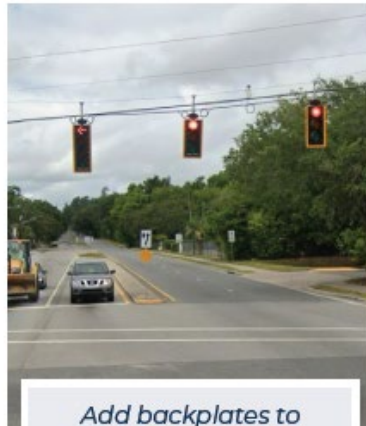


Red Light Running Detection

## Red Light Running Crashes



Modify existing traffic signal phasing to change from permitted to protected only phasing



Add backplates to signal heads



Implement offset left turn lanes

## Signalized Left Turn Crashes



Install sidewalk, shared use path, or separated bicycle facility

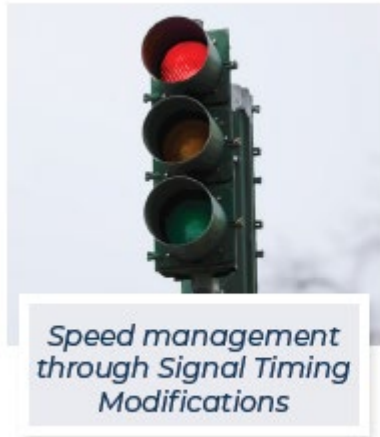


Add midblock crossings

## Bicycle and Pedestrian Crashes

# Location Specific Countermeasures

*Site specific countermeasures  
Examples include:*



Posted Speed Greater than 40 MPH

Corridors with Most Fatal/Serious Injuries

# Prioritization

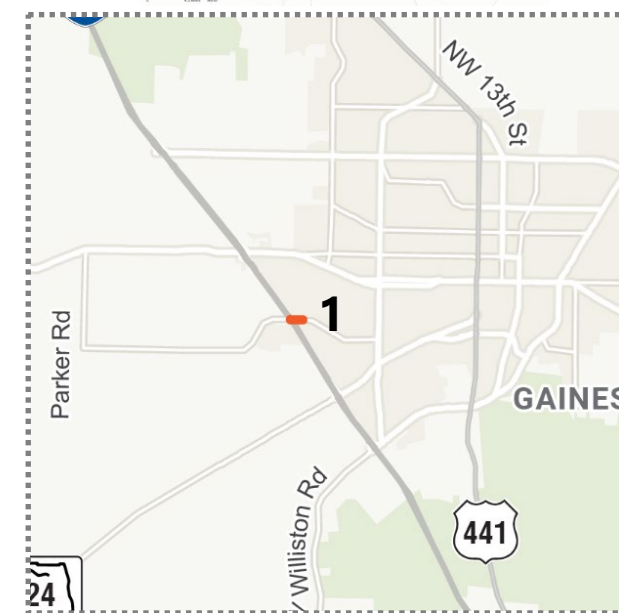
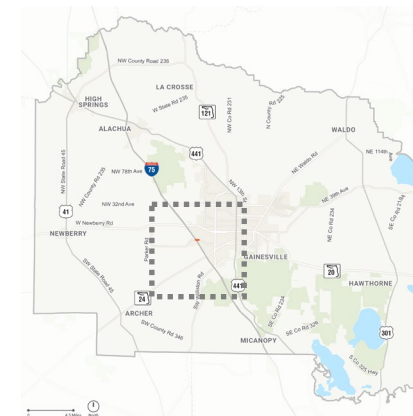


# Prioritization Categories

- **Fatal and Serious Injury Crashes (per mile or per intersection)**
  - Maximum of 3 points
- **Planning Level Cost**
  - Divided into short term to long term
  - Maximum of 3 points
- **Potential Crash Mitigation Reduction**
  - Based on Crash Modification Factors
  - Maximum of 3 points
- **Underserved Communities**
  - Defined by U.S. DOT SS4A Notice of Funding Opportunity in 2025
  - Maximum of 1 point

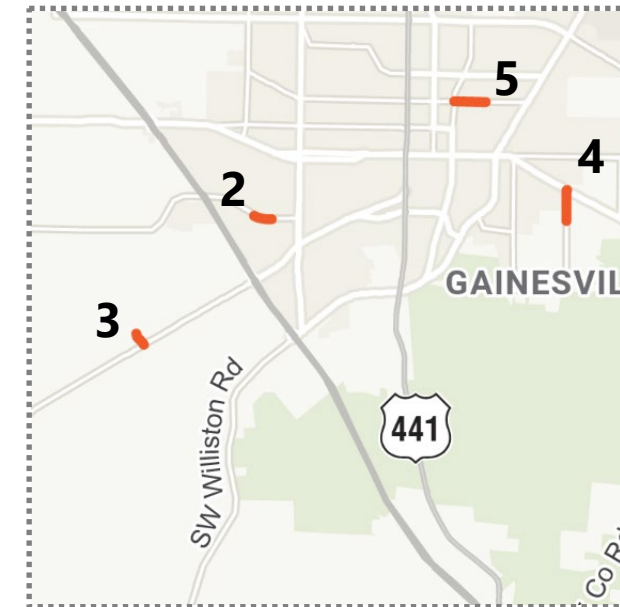
# Top Ranked Segment Studies

ID	Roadway	Limits	Category	Countermeasure
1	SW 20th Ave	I-75 to SW 62nd Blvd	Pedestrian/ Bicycle	<ul style="list-style-type: none"> <li>County has long term RAISE grant to install sidewalks and Cycle Track on new bridge.</li> <li>Short Term Interim Project: Install flex posts between bike lane and travel lane along the whole segment (including the bridge).</li> <li>Upgrade to high emphasis crosswalk at SW 62nd Blvd.</li> </ul>



# Top Ranked Segment Studies

ID	Roadway	Limits	Category	Countermeasure
2	SW 20th Ave	SW 42 <sup>nd</sup> St to SW 38 <sup>th</sup> Ter	Speed Limit > 40 MPH	<ul style="list-style-type: none"> <li>Complete Streets study pending as part of SS4A supplemental grant. As part of the study, evaluate the existing speed limit based on context.</li> <li>Install sidewalk on north side of SW 20th/24th Ave (approximately 1,400 feet of sidewalk needed along this segment).</li> <li>Add one pedestrian crossing (with PHB or RRFB pending outcome of Complete Streets study) near SW 40<sup>th</sup> Terr.</li> </ul>
3	SW 75 St/CR 237	SW 53rd Pl to SW Archer Road	Speed Limit > 40 MPH	<ul style="list-style-type: none"> <li>Add raised medians in gore area.</li> <li>Replace the existing painted keyhole bike lane with a shared use path.</li> <li>Add crossing (with PHB) at SW 53 Place.</li> </ul>
4	SE 27th St	SE Hawthorne Rd to SE 19th Ave	Pedestrian/Bicycle	<ul style="list-style-type: none"> <li>Install shared use path.</li> <li>Install crossing (with RRFB) at SE 15th Ave.</li> </ul>
5	NE 16th Ave	N Main St to NE 9th St	Pedestrian/Bicycle	<ul style="list-style-type: none"> <li>Retrofit existing RRFB to be raised crosswalk.</li> <li>Add new crossing with raised crosswalk/RRFB at NE 2nd St.</li> </ul>



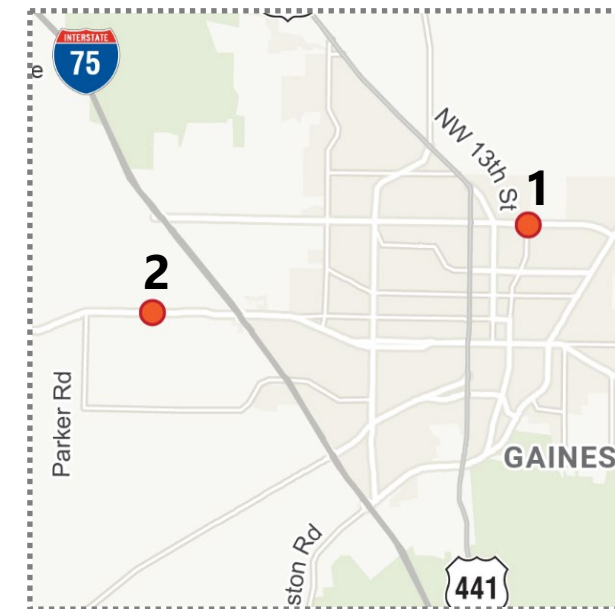
# Top Ranked Segment Studies



ID	Roadway	Limits	Category	Countermeasure
6	CR 325	SE CR 346 to CR 325	Rural Lane Departure	<ul style="list-style-type: none"> <li>Install audible and vibratory treatment (AVT)</li> </ul>
7	N Main St/ CR 329	NE 39th Ave to NE 1st Blvd	Speed Limit > 40 MPH	<ul style="list-style-type: none"> <li>Add landscape raised medians (in existing Two Way Left Turn Lane) near NW 28th Pl, NE 31st Ave, and NE 35th Ave.</li> </ul>
8	CR 232/ Millhopper Rd	NW 97th St to NW 56th Lane	Speed Limit > 40 MPH	<ul style="list-style-type: none"> <li>Add edge line and centerline audible and vibratory treatment (AVT)</li> </ul>
9	NW 53rd Ave	NW 13th St to N Main St	Pedestrian/ Bicycle	<ul style="list-style-type: none"> <li>Install 1.6-mile shared use path on south side.</li> <li>Modify existing signal at NW 53rd Ave/N Main St to add curb ramps and crosswalks to connect to shared use path connection.</li> </ul>

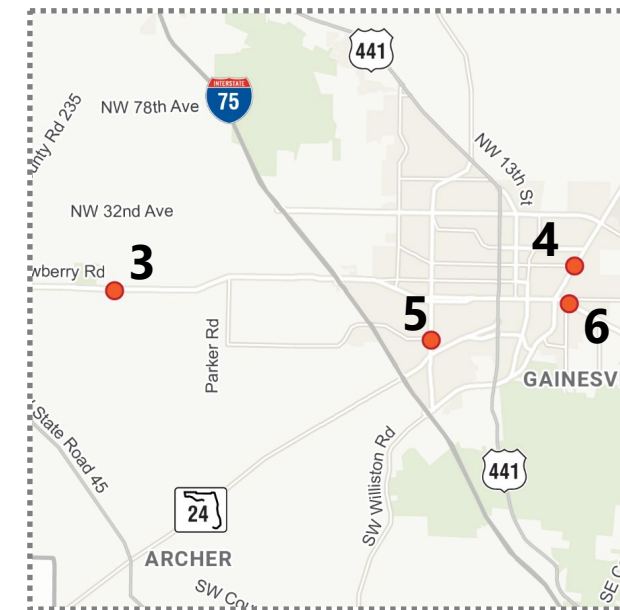
# Top Intersection Studies

ID	Intersection	Category	Countermeasure
1	W Newberry Road/ NW 98 <sup>th</sup> St	Left Turn	<ul style="list-style-type: none"> <li>Modify eastbound left turn to be protected only all times</li> </ul>
2	Main St/39 <sup>th</sup> Ave	Left Turn	<ul style="list-style-type: none"> <li>Implement protected only left turn throughout day for westbound left</li> </ul>



# Top Intersection Studies

ID	Intersection	Category	Countermeasure
3	SW 170th St/ SR 26	Left Turn	<ul style="list-style-type: none"> <li>Modify Westbound left turn to be protected only all times</li> </ul>
4	NE 16th Ave/ NE Waldo Rd	Left Turn	<ul style="list-style-type: none"> <li>Implement lagging left turn as first phase (southbound approach) and rebuild signal to add protected only left turn phasing for southbound movement</li> </ul>
5	SW 20th Ave/ SW 34th St	Red Light Running	<ul style="list-style-type: none"> <li>Install red light running detection and signal backplates</li> </ul>
6	E University Ave/ SE 15th St	Red Light Running	<ul style="list-style-type: none"> <li>Install red light running detection</li> </ul>



# Evaluation



Year  
Click for Dropdown

Severity  
Click for Dropdown

Crash Type  
Click for Dropdown

Municipality  
Click for Dropdown

Road Jurisdiction  
Click for Dropdown

Intersection Related  
Click for Dropdown

Number of Crashes

36,478

Number of Fatalities

310

Number of Injuries

18,034

Map Legend:

Crashes

- No Injury
- Possible Injury
- Non-Incapacitating Injury
- Incapacitating Injury
- Fatal (within 30 days)

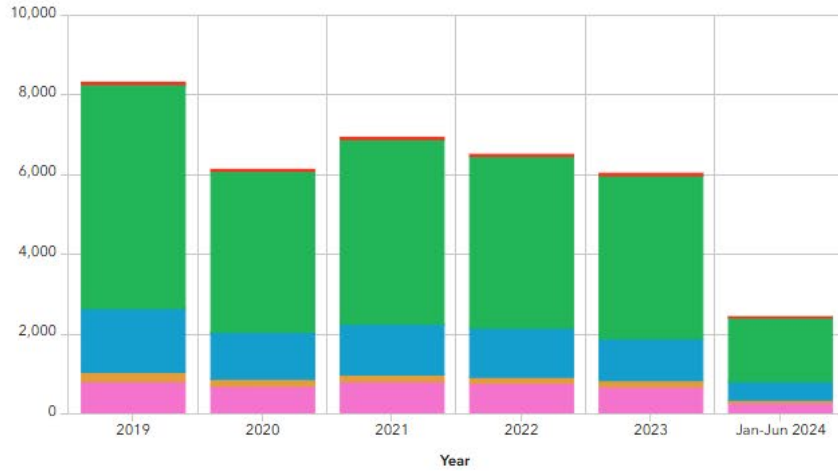
Municipalities



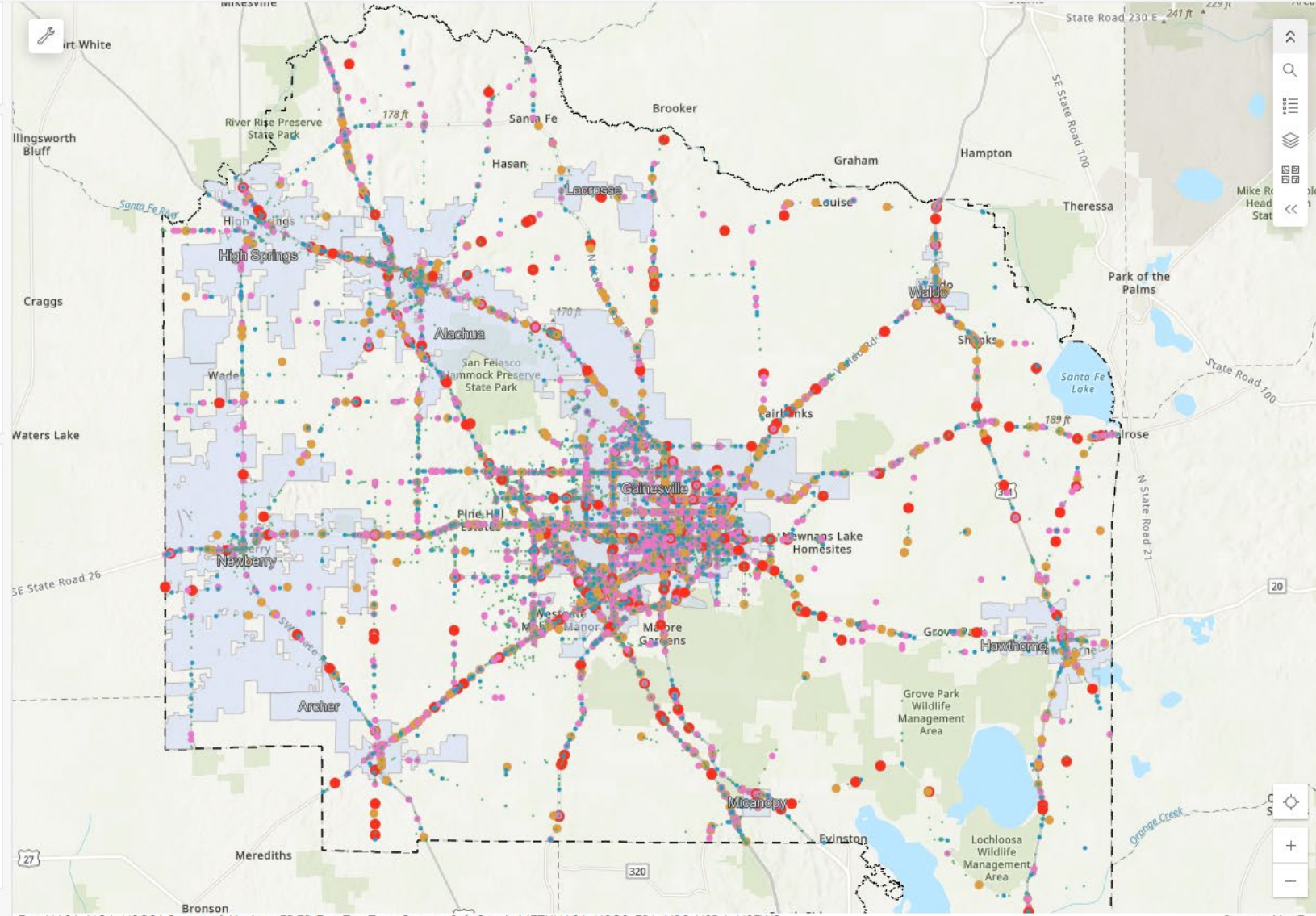
Alachua County Boundary



Crashes by Year and Severity



Crashes by Year and Severity



# Next Steps



# Next Steps

- Adopt the Safe Streets and Roads for All Action Plan
  - Provides prioritized list of studies and strategies
  - Positions the County for future grant opportunities, SS4A or otherwise
- Identify highest priorities for County and develop sustainable funding strategies

# **Staff Recommendation:**

**Adopt the Safe Streets and Roads for All Action Plan as presented.**

## ***Fiscal Recommendation:***

The Action Plan identifies extensive cost to implement the recommendation. Items that are funded within the TCIP are noted in the report. Other items will need to be funded through the acquisition of grants.

