

**To:**  
 Alachua County Facilities  
 Carl Johns  
 6125 NW 18th Drive  
 Gainesville, FL 32653  
 352-384-3190 (Contact)

**Project:**  
 REVISED UPDATED December 23,  
 2025 Alachua County Facilities  
 Hobart Dish Machine REVISE

**From:**  
 CKEPUSA  
 Helena Vasquez  
 6077 N Travel Center Dr  
 Tucson, AZ 85741  
 602-777-6270 (Contact)

Job Reference Number: 43327

## Omnia Partners Contract Number 23FS4

Item	Qty	Description	Sell	Sell Total
1.ALT	1 ea	<b>DISHWASHER, FLIGHT TYPE</b> Hobart Model No. FT1000E+BASE Low energy series base model flight type dish machine, 58 gallons of final rinse consumption per hour, with dual rinse, hinged & insulated doors, sliding wash arms without caps, 16" round flange & microprocessor controls with delime notification, Factory Startup - Free for installations within 100 miles (accessible by public roadway) of a Hobart Service Office during normal business hours with appropriate notice; Installation beyond 100 miles or those not accessible by public roadway will be quoted by Service. ENERGY STAR®	\$124,230.56	\$124,230.56
	1 ea	Oversized units with crated shipping dimensions greater or equal to 72" in length and/or 90" in height. If delivery is to a facility without a standard height dock, additional shipping charges will apply depending on the service requested. consult Factory.		
	1 ea	All FT1000 models are to be quoted by Hobart's internal quotation group		
	1 ea	Standard warranty - 1-Year parts, labor & travel time during normal working hours within the USA <b>List Price: 176,124.00</b> <b>Discount off list: 28</b>		
	32 ea	Service Labor Hours for Base: Required machine assembly by Hobart Service - for assembly within 100 miles (accessible by public roadway) of a Hobart Service Office during normal business hours with appropriate notice; Installation beyond 100 miles or those not accessible by public roadway will be quoted by Service.. Includes assembly of this item only, final electrical or plumbing connections by others. For prevailing wage, or projects	\$161.20	\$5,158.40



Item	Qty	Description	Sell	Sell Total
		in correctional /other secure areas, please contact the local service office in advance or project may be subject to additional fees billed at time of assembly.		
		<b>List Price: 155.00</b>		
		<b>Discount off list: 28</b>		
1 ea		SEF-1011-01 ASR - Add ASR to Base machine. Note that this adds 2' to the length listed, refer to drawing for final length	\$15,287.23	\$15,287.23
		<b>List Price: 21,673.00</b>		
		<b>Discount off list: 28</b>		
1 ea		FT1000E-LPF025 Load Platform 2.5' (Total LOAD length is 2.5' load platform +3' prewash = 5'7")	\$12,019.31	\$12,019.31
		<b>List Price: 17,040.00</b>		
		<b>Discount off list: 28</b>		
1 ea		FT1000E-DRSYES With Dual Rinse		
1 ea		FT1000E-CTRSTD Standard Non-Split 8' Center Joined (Wash/Power Rinse/Dual Rinse)		
1 ea		FT1000E-UNL075 7' 5" Unload Section Non Split	\$25,947.32	\$25,947.32
		<b>List Price: 36,786.00</b>		
		<b>Discount off List: 28</b>		
1 ea		FT1000ETLG24.14 TLG - Total Length of load, center & unload section is: 24.14 feet (overall length)		
1 ea		FT1000E-DRYYES With Blower Dryer	\$25,936.74	\$25,936.74
		<b>List Price: 36,771.00</b>		
		<b>Discount off list: 28</b>		
4 ea		Service Labor Hours for Blower Dryer: Required machine assembly by Hobart Service - for assembly within 100 miles (accessible by public roadway) of a Hobart Service Office during normal business hours with appropriate notice; Installation beyond 100 miles or those not accessible by public roadway will be quoted by Service.. Includes assembly of this item only, final electrical or plumbing connections by others. For prevailing wage, or projects in correctional /other secure areas, please contact the local service office in advance or project may be subject to additional fees billed at time of assembly.	\$161.20	\$644.80
		<b>List Price: 155.00</b>		
		<b>Discount off list: 28</b>		
1 ea		FT1000E-HGTSTD Standard Height		
1 ea		FT1000E-EGR0NO Without Energy Recovery System		
1 ea		FT1000E-HTEELE Electric Heat	\$3,168.47	\$3,168.47
		<b>List Price: 4,492.00</b>		
		<b>Discount off list: 28</b>		
1 ea		FT1000E-ELESCD 480v/60/3-ph (HV) with single point electrical connection	\$1,280.23	\$1,280.23
		<b>List Price: 1,815.00</b>		

Item	Qty	Description	Sell	Sell Total
		<b>Discount off list: 28</b>		
	1 ea	FT1000E-CBRYES With Circuit Breaker		
	1 ea	FT1000E-CBREHW EHW - With Circuit Breaker, Electric, High Voltage, for machines With Blower Dryer	\$11,568.58	\$11,568.58
		<b>List Price: 16,401.00</b>		
		<b>Discount off list: 28</b>		
	1 ea	FT1000E-CON001 (1) Service Connection (refer to specifications sheet for rated amps )		
	1 ea	FT1000E-BST015 15 kW Electric Booster	\$9,432.05	\$9,432.05
		<b>List Price: 13,372.00</b>		
		<b>Discount off list: 28</b>		
	1 ea	FT1000E-PIPSTD Standard Piping		
	1 ea	FT1000E-DIROLR Left to right operation		
	1 ea	FT1000E-ADLONO Without Complete Delime with Delime Notification, Auto Dispensing and Booster Guard"		
	1 ea	NOTE: For water of 3-grains of hardness or more, Hobart suggests adding a water softener.		
	1 ea	FT1000E-DRNUNL Drain in Unload		
	1 ea	FT1000E-DORHNG Hinge doors, all sections		
	1 ea	FT1000-SECMED Standard Security = includes: security screws, lockable control box & locking doors, lockable cover over controls, hook mounted curtains, lockable ASR basket and enclosure panels lock downs (Appropriate level should be chosen by end-user needs; does NOT correspond to security level of prison)	\$4,953.73	\$4,953.73
		<b>List Price: 7,203.00</b>		
		<b>Discount off list: 28</b>		
	1 ea	FT1000E-CNVTIV TIVOLI II,III	\$6,348.93	\$6,348.93
		<b>List Price: 9,001.00</b>		
		<b>Discount off list: 28</b>		
	1 ea	FT1000E-ROD3TV With Cross Rods every 3rd row, Tivoli only (for 22.14 ' machine)	\$2,784.76	\$2,784.76
		<b>List Price: 3,948.00</b>		
		<b>Discount off list: 28</b>		
	1 ea	FT1000E-SEFYES With SEF Options		
	1 ea	DWTFT-1000VB Drain water tempering kit - NGFT	\$2,135.12	\$2,135.12
		<b>List Price: 3,027.00</b>		
		<b>Discount off list: 28</b>		
	1 ea	ACC-INSTALL-HOB Accessory Installation - For installations within 100 miles (accessible by public roadway) of a Hobart Service Office during normal business hours with appropriate notice; Installation beyond 100 miles locations in Alaska, Hawaii or New York City or those not accessible by public roadway will be quoted by Service. Includes installation of this item only, final electrical or plumbing connections by others. Recommendation: coordinate accessory	\$704.28	\$704.28

Item	Qty	Description	Sell	Sell Total
		installation with machine assembly/ installation (NET) <b>List Price: 650.00</b> <b>Discount off list: 28</b>		
1 ea		WTRHAM-ARREST Water Hammer Arrestor Kit - Includes 3/4" brass pressure regulator valve <b>List Price: 921.00</b> <b>Discount off list: 28</b>	\$649.64	\$649.64
			<b>ITEM TOTAL:</b>	<b>\$252,250.15</b>
2	1 ea	<b>INSTALLATION</b> Custom Model No. HOBART SERVICE Hobart Service Installation  Remove Existing Meiko Hobart Forklift Hobart Dumpster Hobart FT1000E+BASE installation Custom Fabricate 18" Round Duct Custom Fabrication Field Welding Misc Plumbing and Electrical Supplies  Statement of Work: Hobart Service Jacksonville Branch to receive at Alachua County Jail a Hobart FT1000E+BASE Electric machine at 480/60/3, Left to Right, inspect for damage, prep, move into location. Hobart to remove existing Meiko Dishmachine Model B-US 231 LPW, Serial Number 10158503 and haul away to be recycled or move into holding area for Owner to dispose of. Hobart to supply forklift to receive and dumpster. Hobart to move new FT1000E+BASE Electric machine at 480/60/3 FT1000E-CBREHN EHN - With Circuit Breaker, FT1000E-CBRYES With Circuit Breaker, FT1000E-CON001 (1) Service Connection, FT1000-SECMED Standard Security, into location, perform basic assembly and make final connections to the existing building utilities with-in 5' of unit. Hobart to have Custom Fabricator onsite to fabricate and install new Stainless Steel Vent Riser. Includes Field Welding of Duct Work. PLEASE NOTE: ALL ELECTRICAL UPGRADES BY OWNER PLEASE NOTE: Owner to verify duct work above ceiling is in good working condition with-out holes or rusting and roof top fan is in good operating condition. Owner to Supply Cold Water Connection for the new machine. Facility will need to ensure vent fans pull proper CFM for the new flight type. All electrical and plumbing	\$58,676.80	\$58,676.80

Item	Qty	Description	Sell	Sell Total
		upgrades required for the new equipment by owner. DOES NOT INCLUDE: Any and all modification to the existing building utilities, all electrical upgrades, all duct work repairs, all plumbing upgrades. Does not including permitting if required. All ceiling and Floor repair by owner. Included: <ul style="list-style-type: none"> <li>• Installations completed during normal business hours. Monday – Friday; 8:00am – 5:00pm</li> <li>• Disassembly, removal, and disposal of existing equipment to include disconnecting all utilities (water, drains, gas, electrical, duct work)</li> <li>• Receiving the equipment at the customers location</li> </ul>		
			<b>ITEM TOTAL:</b>	<b>\$58,676.80</b>
			Total	\$310,926.95

**STANDARD TERMS**

1. This quote is valid for thirty (30) days.
2. Prices exclude applicable sales tax, unless noted otherwise. The current tax rate at the time of billing will be applied to the invoice.
3. Pricing does not include freight or shipping charges, unless noted otherwise.
4. All shipments are FOB Origin. Mohave and Omnia (National IPA/US Communities) shipments are FOB Destination.
5. The customer is responsible to inspect shipments at time of delivery. Damage of any sort to the packaging or item(s) must be noted on the bill of lading before signing. Heavily damaged goods should be refused for delivery. Contact your sales representative if these conditions occur.
6. Delivery and/or installation is not included, unless specifically noted. All final connections of utilities, unless specifically noted to be provided, are the responsibility of the customer.
7. Any item ordered and refused by the customer will be subject to a restocking charge and two-way freight. Custom items and special order items are not returnable.
8. Customer is responsible for free and easy access for delivery and/or installation. Seller, his agent, or delivery person is in no way obligated to perform any services to secure such access.
9. Additional charges may apply for any changes in field conditions, additional services requested but not specified, and additional work mandated by authorities having jurisdiction but not included in the original scope of work.
10. Any reconditioned or used equipment quoted is currently available and is offered on a first come basis.
11. New equipment carries the standard manufacturer's warranty. Used equipment is sold "as is". Extended warranties for reconditioned equipment are available for purchase.
12. Commercial equipment used in a non commercial or residential location will void the manufacturer's warranty. Residential equipment used in a commercial setting will void the manufacturer's warranty.
13. Payment terms are fifty percent (50%) with order and fifty percent (50%) upon delivery. Certain contracts may have special payment terms. Mohave, Omnia (National IPA/US communities) and public institutions that provide properly executed purchase orders are Net 30 day invoice terms.

14. Credit card payments at time of invoice will be subject to a 3% handling fee.
15. Pricing does not include any stainless, utility, or mechanical upgrades or modifications unless noted. Capacity and integrity of the existing mechanical, utility, and structural systems is by others.
16. Permits, inspections, architectural and/or mechanical plans/drawings, and the cost of obtaining such, is the responsibility of the customer.
17. Removal and disposal of any existing equipment is the responsibility of the customer, unless other specific arrangements are noted.
18. Any systems or work required to make equipment operational, i.e. alarm connections, fire protection, site specific requirements, construction costs, air balancing, etc., unless specifically noted to be provided, are the responsibility of the customer.
19. Title to merchandise included in this quote shall remain the property of the seller until payment in full for the items and any related charges are paid in full. N/A for Mohave, Omnia, and public institutions that provide a properly executed purchase orders.



Project \_\_\_\_\_

AIA # \_\_\_\_\_ SIS # \_\_\_\_\_

Item # \_\_\_\_\_ Quantity \_\_\_\_\_ C.S.I. Section 114000



## FT1000e BASE ELECTRIC

### Flight-Type Dishwashing Machine



Advansys model shown



Complies with EPA Reduction of Lead in Drinking Water Act 2014

Meets requirements of ASSE Standard No. 1004

### SPECIFIER STATEMENT

The specified machine shall be a Hobart flight type dish machine, 58 gallons of final rinse consumption per hour, with dual rinse, hinged & insulated doors, 30" wide conveyor belt, sliding wash arms without caps, & microprocessor controls.

### STANDARD FEATURES

- + Pumped rinse system (pressure gauge not required)
- + Water usage 58 gph
- + Digital controls with machine diagnostics
- + Low temperature alert
- + Hinged insulated cabinet-style doors
- + 31" access on prewash, power wash and power rinse chambers; 20" access on dual rinse and ASR chambers
- + Start and stop switches at both ends
- + Doors open indicator
- + Drains open indicator
- + Door interlocks
- + 3½ H.P. prewash, power wash, and power rinse pump motors, all TEFC
- + Capless auto clean wash arms
- + Easy to remove stainless steel scrap pans and baskets
- + 30" wide conveyor belt
- + Dual rinse
- + Front and rear panels
- + Variable speed conveyor
- + Electric booster heater
- + Configurable drain to load or unload

### OPTIONS & ACCESSORIES (Available at extra cost)

- Insulated split, vertical slide-up doors
- Multiple conveyor options
- Factory mounted circuit breakers
- Correctional packages – standard, medium and maximum options (Contact Hobart for details)
- Casino packages
- 6" higher than standard chamber
- Flanged feet
- Water hammer arrestor/PRV (installed by others)
- Drain water tempering kit (installed by others)
- WS-80 water softener

FT SERIES – FT1000e BASE ELECTRIC

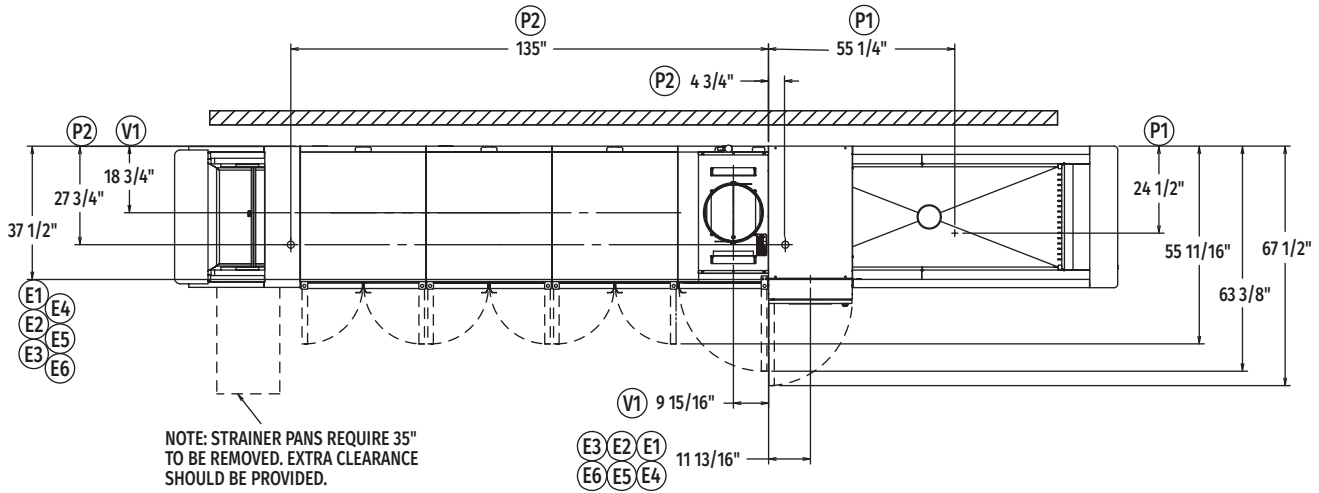
Approved by \_\_\_\_\_ Date \_\_\_\_\_ Approved by \_\_\_\_\_ Date \_\_\_\_\_



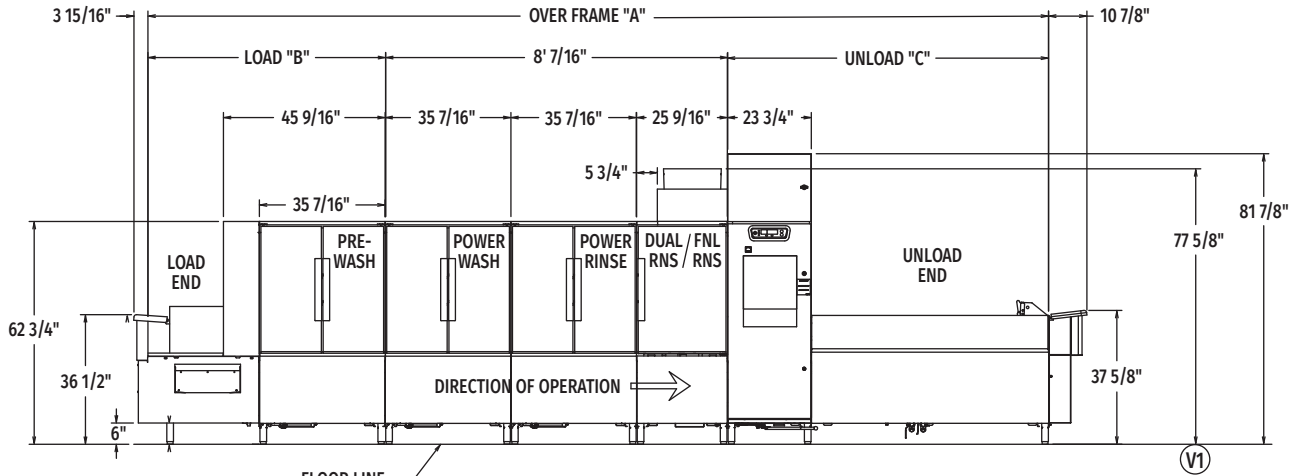
# FT1000e BASE ELECTRIC

## Flight-Type Dishwashing Machine

(Left to Right)



Top View Left to Right

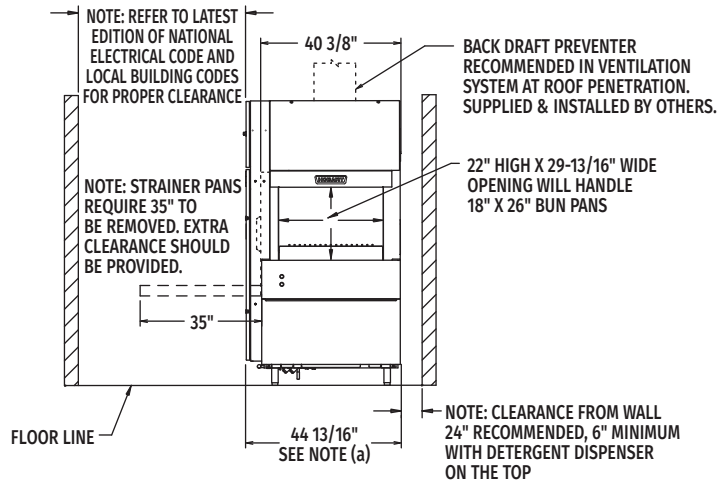


Front View Left to Right

Note: Control box electrical connections – see page 5.

MODEL NO.	"A"	"B"	"C"
FT1019e (5.5'-8'-5.5')	19' 2-3/8"	5' 6-15/16"	5' 7"
FT1020e (6.5'-8'-5.5')	20' 2-1/8"	6' 6-11/16"	5' 7"
FT1021e (7.5'-8'-5.5')	21' 1-31/32"	7' 6-17/32"	5' 7"
FT1021e (5.5'-8'-7.5')	21' 1-7/8"	5' 6-15/16"	7' 6-1/2"
FT1022e (6.5'-8'-7.5')	22' 1-5/8"	6' 6-11/16"	7' 6-1/2"
FT1023e (7.5'-8'-7.5')	23' 1-15/32"	7' 6-17/32"	7' 6-1/2"
FT1023e (5.5'-8'-9')	22' 9-5/8"	5' 6-15/16"	9' 2-1/4"
FT1024e (6.5'-8'-9')	23' 9-3/8"	6' 6-11/16"	9' 2-1/4"
FT1025e (7.5'-8'-9')	24' 9-7/32"	7' 6-17/32"	9' 2-1/4"
FT1025e (5.5'-8'-11')	24' 9-1/4"	5' 6-15/16"	11' 1-7/8"
FT1026e (6.5'-8'-11')	25' 9"	6' 6-11/16"	11' 1-7/8"
FT1027e (7.5'-8'-11')	26' 8-27/32"	7' 6-17/32"	11' 1-7/8"
FT1028e (5.5'-8'-15')	28' 4-9/16"	5' 6-15/16"	14' 9-3/16"
FT1029e (6.5'-8'-15')	29' 4-5/16"	6' 6-11/16"	14' 9-3/16"
FT1030e (7.5'-8'-15')	30' 4-5/32"	7' 6-17/32"	14' 9-3/16"
FT1030e (5.5'-8'-17')	30' 4-1/8"	5' 6-15/16"	16' 8-3/4"
FT1031e (6.5'-8'-17')	31' 3-7/8"	6' 6-11/16"	16' 8-3/4"
FT1032e (7.5'-8'-17')	32' 3-23/32"	7' 6-17/32"	16' 8-3/4"

Note: Overall length of machine is Dimension "A" + 14-13/16"



Back/Unload End

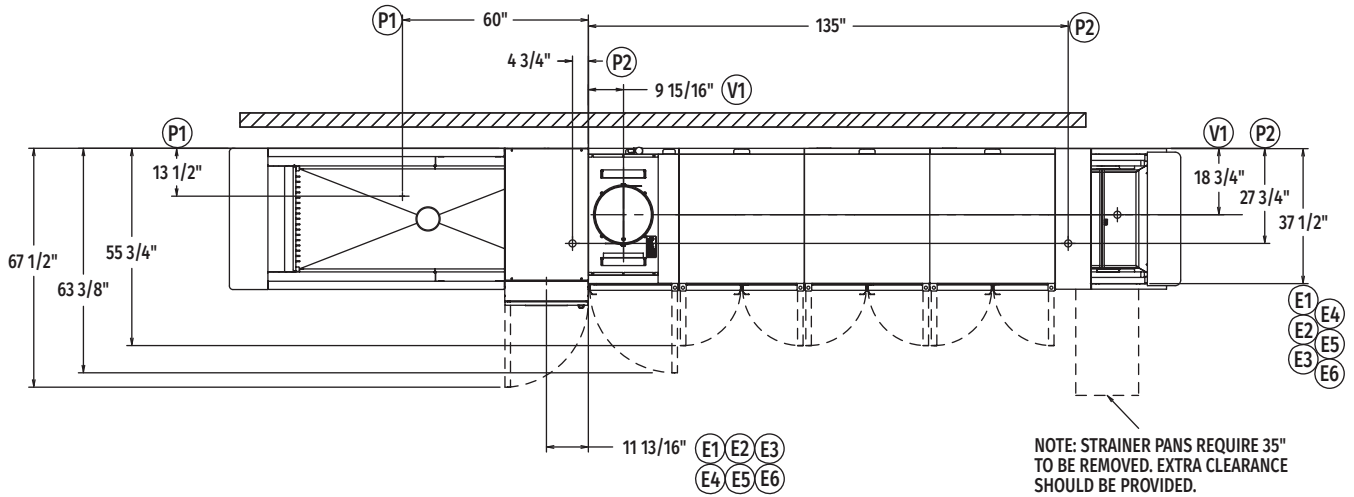
MODEL:  
FT1000e BASE  
ELECTRIC  
L-R OPERATION  
00-562361  
REV B



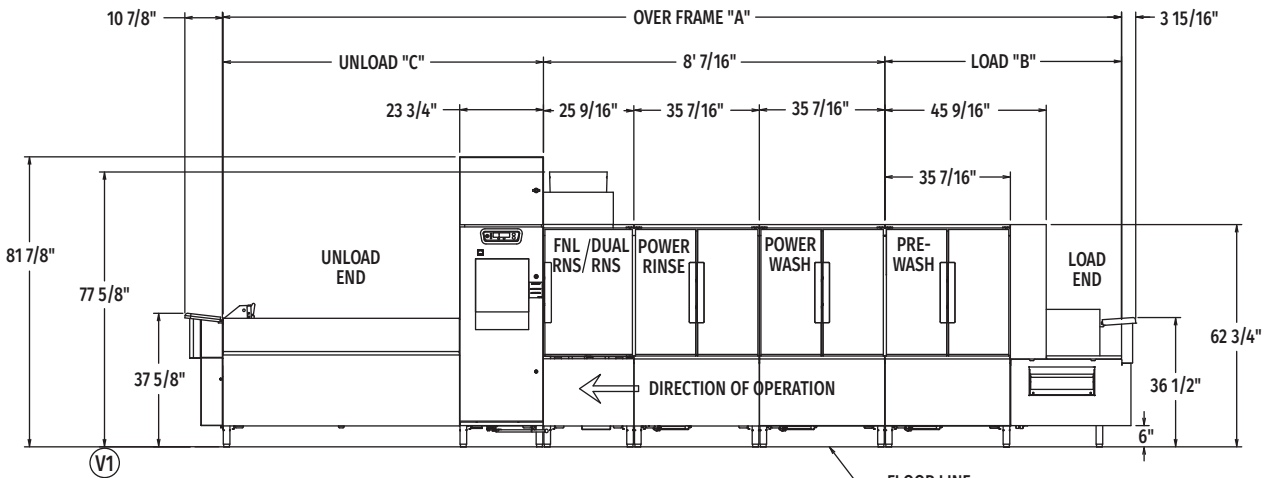
# FT1000e BASE ELECTRIC

## Flight-Type Dishwashing Machine

(Right to Left)



Top View Right to Left

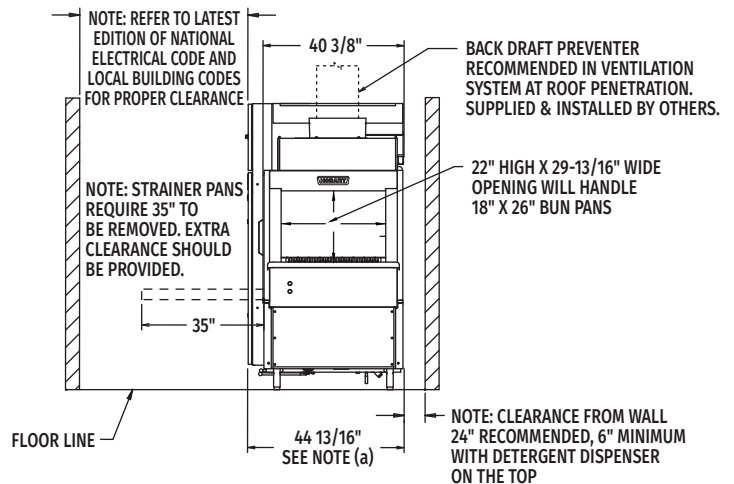


Front View Right to Left

Note: Control box electrical connections – see page 5.

MODEL NO.	"A"	"B"	"C"
FT1019e (5.5'-8'-5.5')	19' 2-3/8"	5' 6-15/16"	5' 7"
FT1020e (6.5'-8'-5.5')	20' 2-1/8"	6' 6-11/16"	5' 7"
FT1021e (7.5'-8'-5.5')	21' 1-31/32"	7' 6-17/32"	5' 7"
FT1021e (5.5'-8'-7.5')	21' 1-7/8"	5' 6-15/16"	7' 6-1/2"
FT1022e (6.5'-8'-7.5')	22' 1-5/8"	6' 6-11/16"	7' 6-1/2"
FT1023e (7.5'-8'-7.5')	23' 1-15/32"	7' 6-17/32"	7' 6-1/2"
FT1023e (5.5'-8'-9')	22' 9-5/8"	5' 6-15/16"	9' 2-1/4"
FT1024e (6.5'-8'-9')	23' 9-3/8"	6' 6-11/16"	9' 2-1/4"
FT1025e (7.5'-8'-9')	24' 9-7/32"	7' 6-17/32"	9' 2-1/4"
FT1025e (5.5'-8'-11')	24' 9-1/4"	5' 6-15/16"	11' 1-7/8"
FT1026e (6.5'-8'-11')	25' 9"	6' 6-11/16"	11' 1-7/8"
FT1027e (7.5'-8'-11')	26' 8-27/32"	7' 6-17/32"	11' 1-7/8"
FT1028e (5.5'-8'-15')	28' 4-9/16"	5' 6-15/16"	14' 9-3/16"
FT1029e (6.5'-8'-15')	29' 4-5/16"	6' 6-11/16"	14' 9-3/16"
FT1030e (7.5'-8'-15')	30' 4-5/32"	7' 6-17/32"	14' 9-3/16"
FT1030e (5.5'-8'-17')	30' 4-1/8"	5' 6-15/16"	16' 8-3/4"
FT1031e (6.5'-8'-17')	31' 3-7/8"	6' 6-11/16"	16' 8-3/4"
FT1032e (7.5'-8'-17')	32' 3-23/32"	7' 6-17/32"	16' 8-3/4"

Note: Overall length of machine is Dimension "A" + 14-13/16"



Back/Unload End

MODEL:  
FT1000e BASE  
ELECTRIC  
R-L OPERATION  
00-562360  
REV B



## FT1000e BASE ELECTRIC Flight-Type Dishwashing Machine

### LEGEND

Electrical Connections	
E1	Electric connection for 1TB with or without circuit breakers. 79-1/8" AFF.
E2	Electric connection for 2TB without circuit breakers. 79-1/8" AFF.
E3	Electric connection for 3TB without circuit breakers. 79-1/8" AFF.
E4	Electric connection for 4TB without circuit breakers. 79-1/8" AFF.
E5	Electric connection for 5TB without circuit breakers. 79-1/8" AFF.
E6	Electric connection for 2TB with circuit breakers. 79-1/8" AFF.
Plumbing Connections	
P1	Common hot water connection (automatic fill) 110° F water minimum, 1" FPT, 5-1/2" AFF.
P2	Drain connection: Default location is drain to unload. May be drained to either end of unit. 2" FPT, 7" AFF.
Ventilation Connections	
V1	Customers' vent connection. Must fit inside 16" diameter vent stack providing 750 CFM exhaust at machine connection @ .75" water column (standard air conditions). Back draft damper is RECOMMENDED ON ALL BAS models. 77-5/8" AFF.

### SERVICE CONNECTIONS WITH CIRCUIT BREAKERS (2 CONNECTIONS)

E1	Motors, Controls, Power Rinse & Booster Heat (1TB) (1) Service Connection as Shown Below			
	Voltage	Rated Amps	Minimum Supply Circuit Ampacity	Maximum Protective Device
	208/60/3	139.0	175	175
	240/60/3	125.6	175	175
	480/60/3	66.9	90	90
E6	Wash, Dual Rinse Heat (2TB) (1) Service Connection as Shown Below			
	Voltage	Rated Amps	Minimum Supply Circuit Ampacity	Maximum Protective Device
	208/60/3	79.7	100	100
	240/60/3	69.0	90	90
	480/60/3	34.5	45	45

**WARNING:** Plumbing and electrical connections should be made by qualified personnel who will observe all the applicable plumbing, sanitary, safety codes and National Electrical Code.

#### General Notes:

- (a) The control box is attached to the center section and is rotated 90 degrees for shipping.

AFF = Above Finished Floor

All dimensions taken from the floor line may increase 3-1/4" with leg adjustment.

For convenience when cleaning, customer should install water tap near machine with 30 ft. of heavy duty hose with squeeze valve.

This drawing is supplied as a reference for connection information only. It will not be utilized for manufacturing of unit.

#### Electrical Notes:

Service wire temperature rating: 90°C minimum.

Detergent and rinse aid feeder service connections standard on all FT1000e models at machine line voltage.

#### Plumbing Notes:

Recommended building flowing hot water pressure to the dishwasher is 30-35 PSI.

Water hammer arrestor (meeting ASSE-1010 standard or equivalent) to be supplied (by others) in hot supply line at service connection.

#### Ventilation Notes:

Room ventilation is required to handle machine's latent & sensible heat. Majority of latent/sensible heat at unload end of machine.

Vent fan control standard on all FT1000e models.

#### Water Quality Required:

Total water hardness < 3 grains per gallon.

Total suspended solids (TSS) < 10 microns.

Heat Gain to Space (BTU/Hr.)	
Latent	Sensible
72,200	30,900



# FT1000e BASE ELECTRIC

## Flight-Type Dishwashing Machine

### SERVICE CONNECTION WITH CIRCUIT BREAKERS (SINGLE POINT ELECTRICAL CONNECTION)

E1 Motors, Controls, Dual Rinse & Power Rinse (1TB), Wash & Booster Heat			
Voltage	Rated Amps	Minimum Supply Circuit Ampacity	Maximum Protective Device
480/60/3	101.4	150	150

### SERVICE CONNECTIONS WITHOUT CIRCUIT BREAKERS (5 CONNECTIONS)

E1 Motors & Controls (1TB) (1) Service Connection as Shown Below			
Voltage	Rated Amps	Minimum Supply Circuit Ampacity	Maximum Protective Device
208-240/60/3	38.0	50	50
480/60/3	23.1	30	30
E2 Electric Tank Heat, Power Rinse (2TB) (1) 21.4 kW Connection as Shown Below			
Voltage	Rated Amps	Minimum Supply Circuit Ampacity	Maximum Protective Device
208/60/3	59.4	80	80
240/60/3	51.5	70	70
480/60/3	25.7	35	35
E3 Electric Tank Heat, Wash (3TB) (1) 18 kW Connection as Shown Below			
Voltage	Rated Amps	Minimum Supply Circuit Ampacity	Maximum Protective Device
208/60/3	50.0	70	70
240/60/3	43.3	60	60
480/60/3	21.7	30	30
E4 Electric Tank Heat, Dual Rinse (4TB) (1) 10.7 kW Service Connection as Shown Below			
Voltage	Rated Amps	Minimum Supply Circuit Ampacity	Maximum Protective Device
208/60/3	29.7	40	40
240/60/3	25.7	35	35
480/60/3	12.9	20	20
E5 Electric Booster (5TB) (1) 15 kW Connection as Shown Below			
Voltage	Rated Amps	Minimum Supply Circuit Ampacity	Maximum Protective Device
208/60/3	41.6	60	60
240/60/3	36.1	50	50
480/60/3	18.0	25	25

### SPECIFICATIONS

#### Capacities

Conveyor Speed (feet per minute)	4.0 - 8.5
Dishes per Hour	14,316
Pre-Wash Tank (U.S. gallons)	40
Wash Tank (U.S. gallons)	40
Rinse Tank (U.S. gallons)	40
Dual Rinse Tank (U.S. gallons)	7.2

#### Motor Horsepower

Pre-Wash Tank	3½
Wash Tank	3½
Rinse Tank	3½
Dual Rinse Tank	¾
Final Rinse	½
Conveyor	¾

#### Water Consumption

U.S. Gallons per Hour (maximum use)	58
U.S. Gallons per Minute	0.97

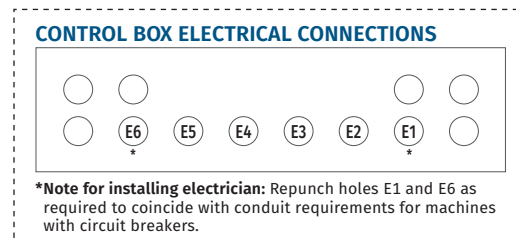
#### Heating

Tank Heat, Electric	Total tank heat - 50.1 kW (kW regulated)	(Wash, Rinse, Dual Rinse)
Electric Booster (kW)	15	

**Shipping Weight (approximate)** . . . Varies by individual model  
(Consult your Hobart representative)

**Crated Dimensions** . . . . . Varies by individual model  
(Consult your Hobart representative)

FT1000 Advansys Water Treatment System	
Model	Description
WS-80	Water Softener
<b>Available through Hobart Service only</b>	
PF-10-EHT	Hi-Temp Filter Housing
SD-510HT	Sediment Filter Cartridge



**Detail "A-A"**  
(not to scale)

As continued product improvement is a policy of Hobart, specifications are subject to change without notice.



# Oversized Equipment Quick Reference Guide

Oversized units with crated shipping dimensions greater or equal to 72" in length and/or 90" in height. If delivery is to a facility without a standard height dock, additional shipping charges will apply depending on the service requested.

## HOBART

<p><b>DOOR TYPES</b></p> <ul style="list-style-type: none"> <li>• AM15T</li> <li>• AM15VLT</li> </ul>	<p><b>CONVEYOR TYPES (CL, FT)</b></p> <ul style="list-style-type: none"> <li>• CL44eN-ADV</li> <li>• CL44eNVL</li> <li>• All 54" Models or Greater</li> <li>• All FT Models</li> </ul>	<p><b>PREP WASHERS</b></p> <ul style="list-style-type: none"> <li>• PW10eR</li> <li>• PW20eR</li> <li>• PWVeR</li> </ul>	<p><b>TURBOWASHERS (TW), TOTEWASHERS (CL64T) WASTE PULPERS (WPS)</b></p> <ul style="list-style-type: none"> <li>• All Models</li> </ul>	<p><b>WRAPPING SYSTEM (NGW)</b></p> <ul style="list-style-type: none"> <li>• All Models</li> </ul>
---	--	--	---	--



<p><b>G, R and A SERIES</b></p> <ul style="list-style-type: none"> <li>• All Roll-In &amp; Roll-Thru Models</li> <li>• All Three Section Models</li> </ul>	<p><b>UNDERCOUNTERS (UHT, UHD, ULT, TU)</b></p> <ul style="list-style-type: none"> <li>• All 72" Models or Greater</li> </ul>	<p><b>PREP TABLES (UST, USD, UPT, UPD, TS, TB)</b></p> <ul style="list-style-type: none"> <li>• TB - 60" Models or Greater</li> <li>• TS - 66" Models or Greater</li> <li>• All 72" Models or Greater</li> </ul>	<p><b>EQUIPMENT STANDS (TE)</b></p> <ul style="list-style-type: none"> <li>• All Models 48" or Greater</li> </ul>	<p><b>UNDERCOUNTERS (CLUC) &amp; PREP TABLES (CLPT)</b></p> <ul style="list-style-type: none"> <li>• All 72" Models or Greater</li> </ul>
--	---	--	---	---



THE INFORMATION PROVIDED IS TO BE USED AS A QUICK REFERENCE GUIDE ONLY. PLEASE CONSULT ITW FEG CUSTOMER CARE FOR UNITS NOT LISTED OR ANY QUESTIONS SURROUNDING DELIVERY OPTIONS.