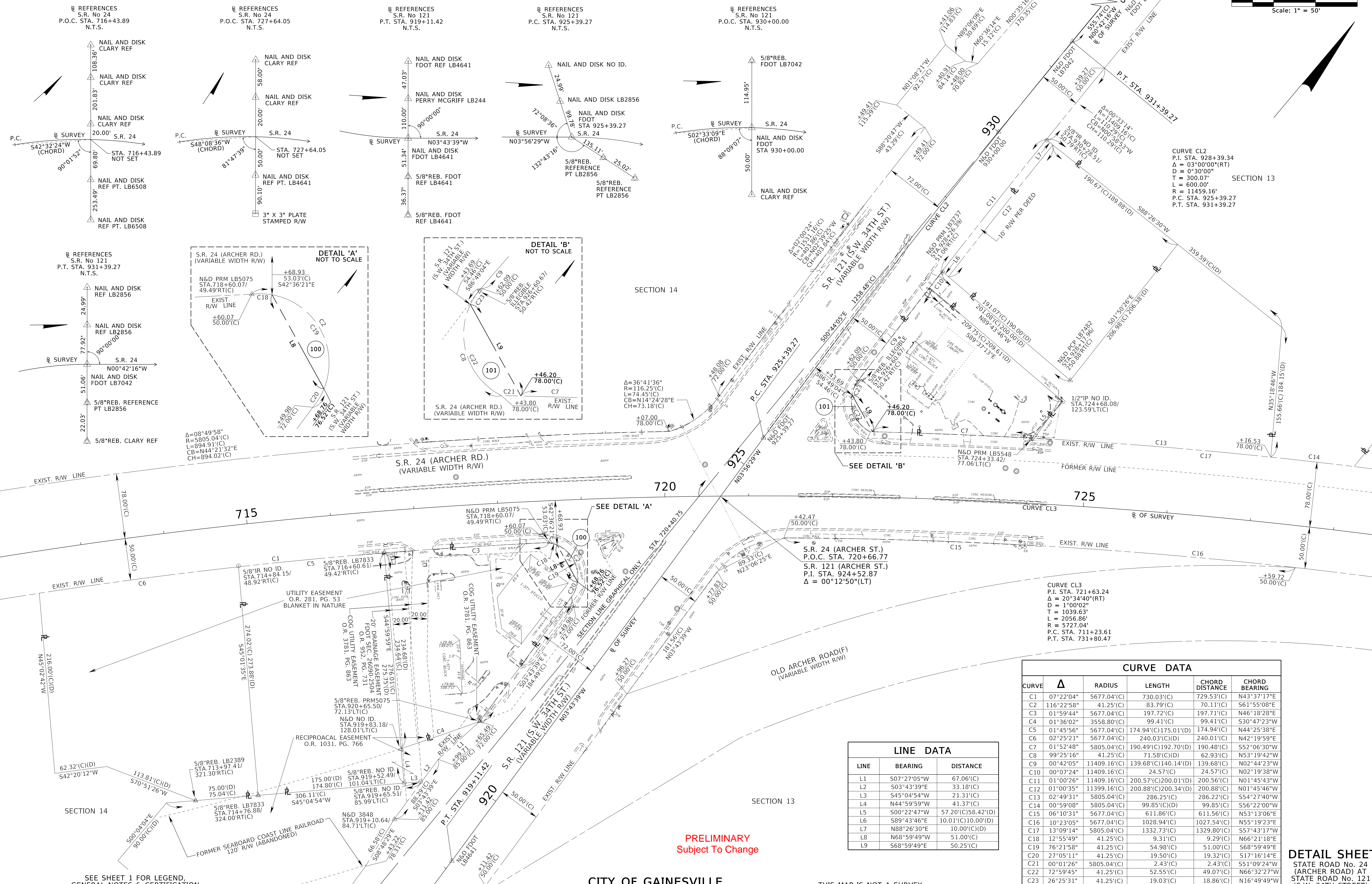
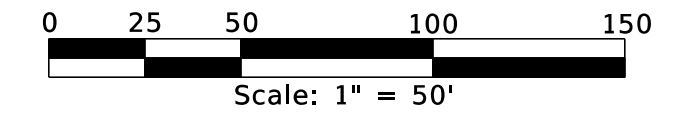
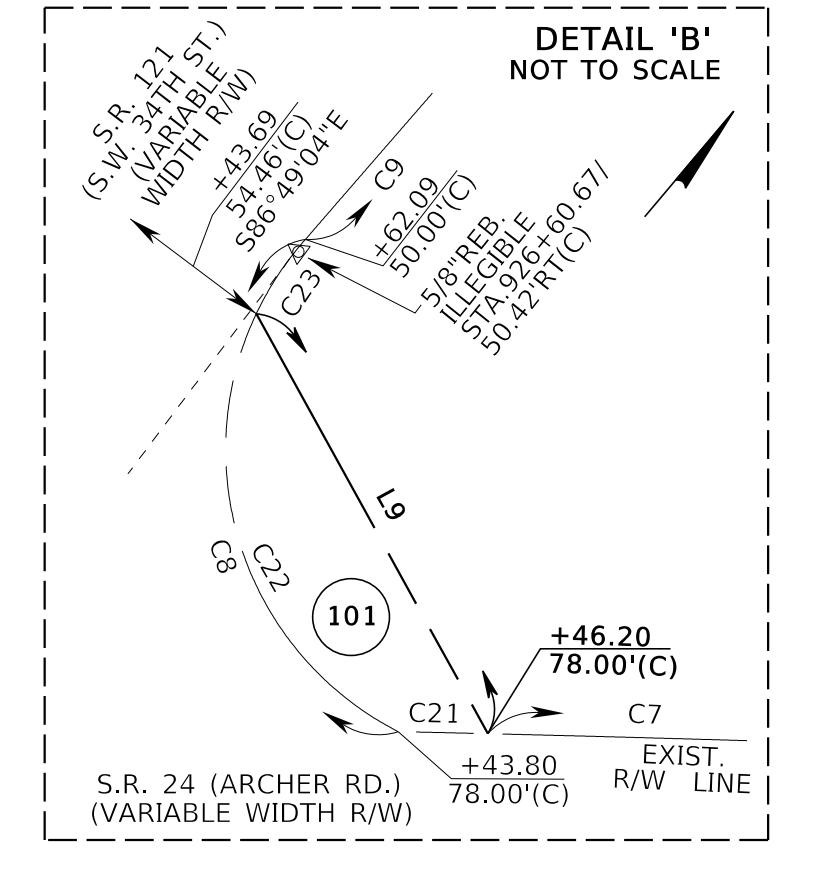
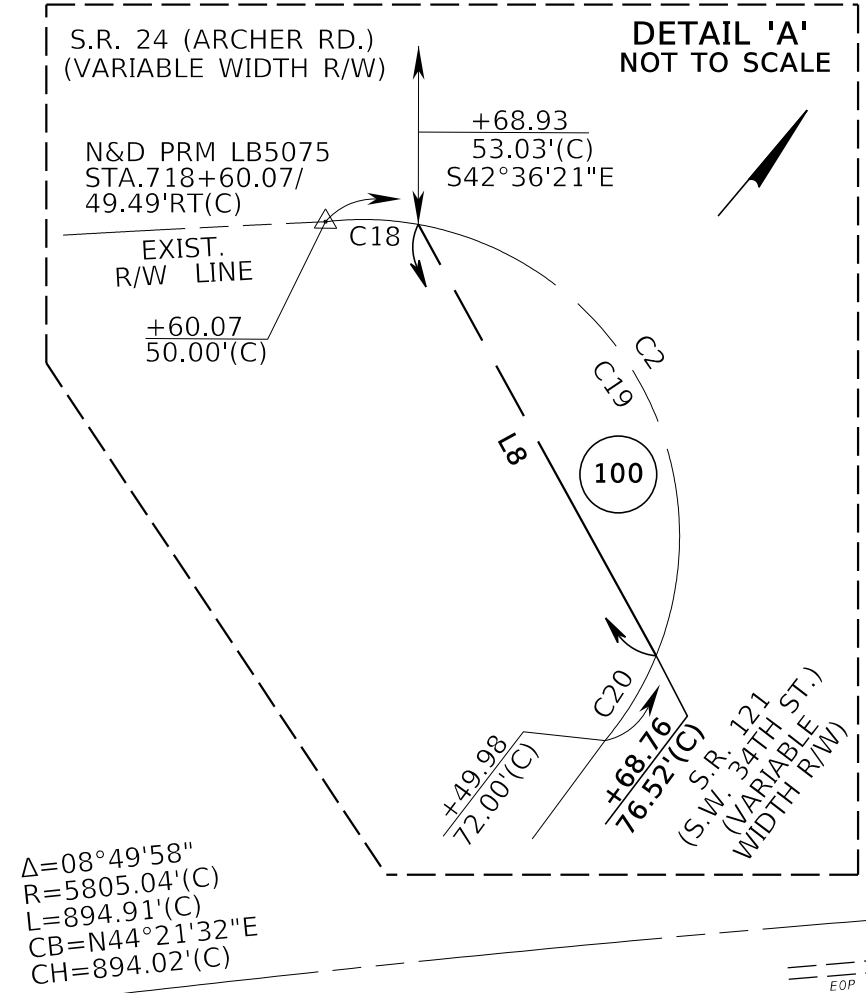


# TOWNSHIP 10 SOUTH, RANGE 19 EAST



**CURVE CL2**  
 P.I. STA. 928+39.34  
 $\Delta = 03^{\circ}00'00''$ (RT)  
 $D = 0^{\circ}30'00''$   
 $T = 300.07'$   
 $L = 600.00'$   
 $R = 11459.16'$   
 P.C. STA. 925+39.27  
 P.T. STA. 931+39.27



CURVE DATA				
CURVE	$\Delta$	RADIUS	LENGTH	CHORD BEARING
C1	07°22'04"	5677.04'(C)	730.03'(C)	729.53'(C) N43°37'17"E
C2	116°22'58"	41.25'(C)	83.79'(C)	70.11'(C) S61°55'08"E
C3	01°59'44"	5677.04'(C)	197.72'(C)	197.71'(C) N46°18'28"E
C4	01°36'02"	3558.80'(C)	99.41'(C)	99.41'(C) S30°47'23"W
C5	01°45'56"	5677.04'(C)	174.94'(C)	174.94'(D) N44°25'38"E
C6	02°25'21"	5677.04'(C)	240.03'(C)	240.01'(C) N42°19'59"E
C7	01°52'48"	5805.04'(C)	190.49'(C)	190.48'(C) S52°06'30"W
C8	99°25'16"	41.25'(C)	71.58'(C)	62.93'(C) N53°19'42"W
C9	00°42'05"	11409.16'(C)	139.68'(C)	139.68'(C) N02°44'23"W
C10	00°07'24"	11409.16'(C)	24.57'(C)	24.57'(C) N02°19'38"W
C11	01°00'26"	11409.16'(C)	200.57'(C)	200.56'(C) N01°45'43"W
C12	01°00'35"	11399.16'(C)	200.88'(C)	200.88'(C) N01°45'46"W
C13	02°49'31"	5805.04'(C)	286.25'(C)	286.22'(C) S54°27'40"W
C14	00°59'08"	5805.04'(C)	99.85'(C)	99.85'(C) S56°22'00"W
C15	06°10'31"	5677.04'(C)	611.86'(C)	611.56'(C) N53°13'06"E
C16	10°23'05"	5677.04'(C)	1028.94'(C)	1027.54'(C) N55°19'23"E
C17	13°09'14"	5805.04'(C)	1332.73'(C)	1329.80'(C) S57°43'17"W
C18	12°55'49"	41.25'(C)	9.31'(C)	9.29'(C) N66°21'18"E
C19	76°21'58"	41.25'(C)	54.98'(C)	51.00'(C) S68°59'49"E
C20	27°05'11"	41.25'(C)	19.50'(C)	19.32'(C) S17°16'14"E
C21	00°01'26"	5805.04'(C)	2.43'(C)	2.43'(C) S51°09'24"W
C22	72°59'45"	41.25'(C)	52.55'(C)	49.07'(C) N66°32'27"W
C23	26°25'31"	41.25'(C)	19.03'(C)	18.86'(C) N16°49'49"W

LINE DATA		
LINE	BEARING	DISTANCE
L1	S07°27'05"W	67.06'(C)
L2	S03°43'39"E	33.18'(C)
L3	S45°04'54"W	21.31'(C)
L4	N44°59'59"W	41.37'(C)
L5	S00°22'47"W	57.20'(C)
L6	N89°43'46"E	10.01'(C)
L7	N88°26'30"E	10.00'(C)
L8	N68°59'49"W	51.00'(C)
L9	S68°59'49"E	50.25'(C)

**PRELIMINARY**  
 Subject To Change

**DETAIL SHEET**  
 STATE ROAD No. 24  
 (ARCHER ROAD) AT  
 STATE ROAD No. 121  
 (S.W. 34TH STREET)