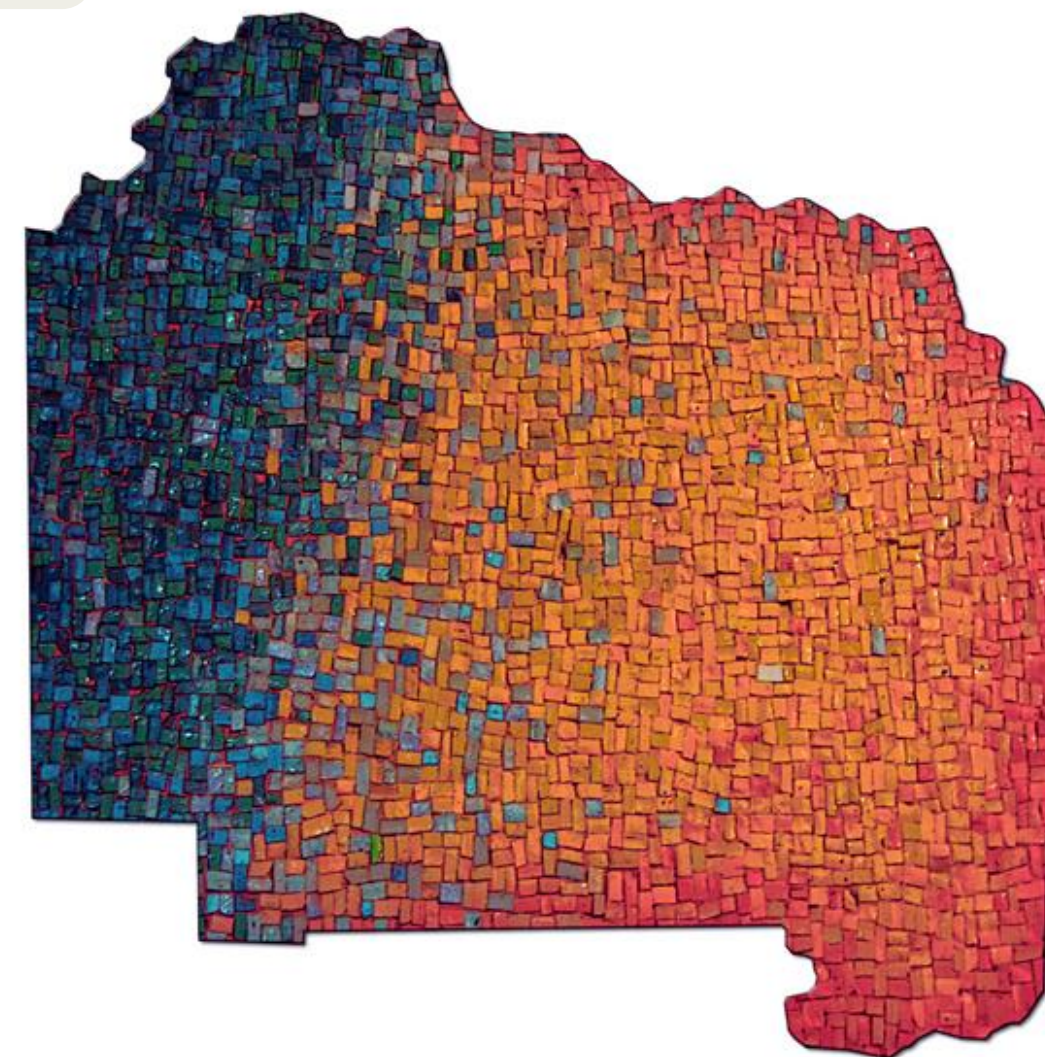
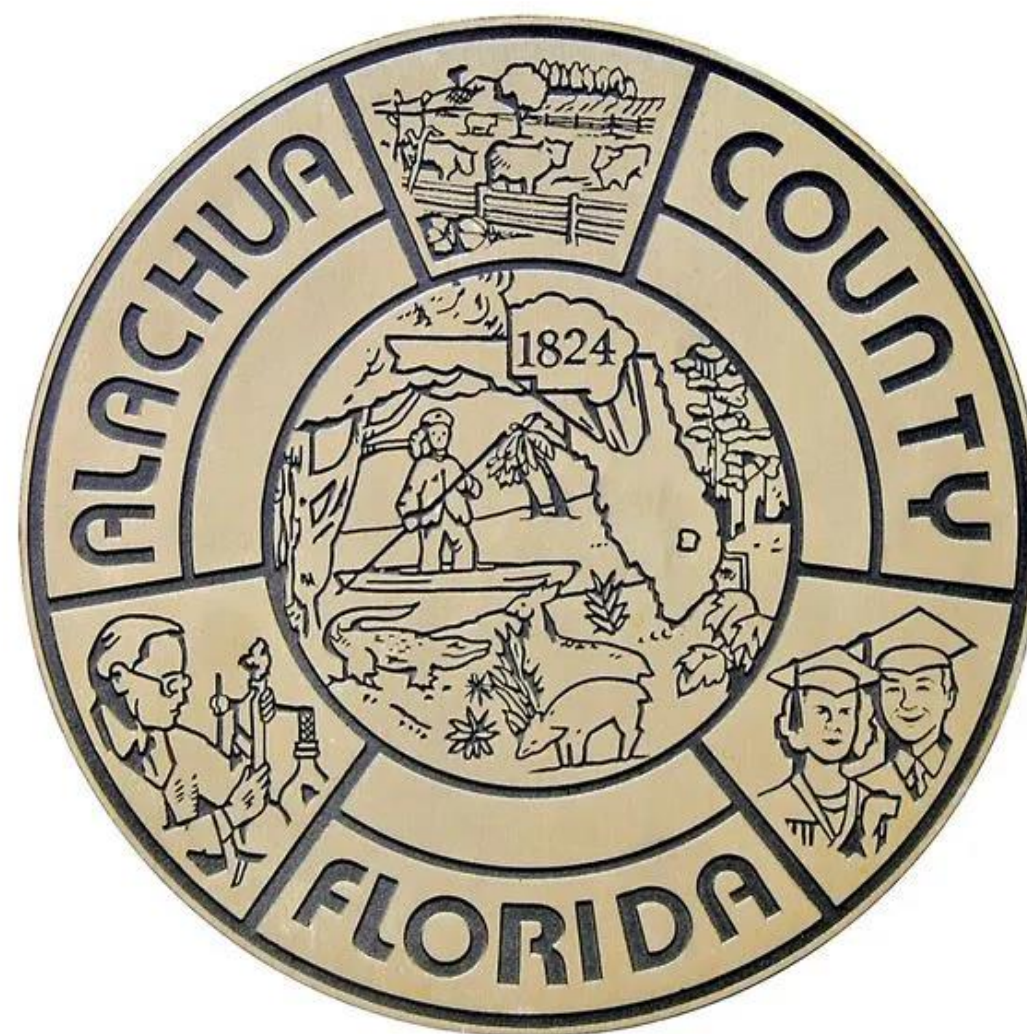


MERIDIAN  
HEALTHCARE  
**ANNUAL  
REPORT  
2025**





## ***Meridian provides whole-person care rooted in hope and empathy***

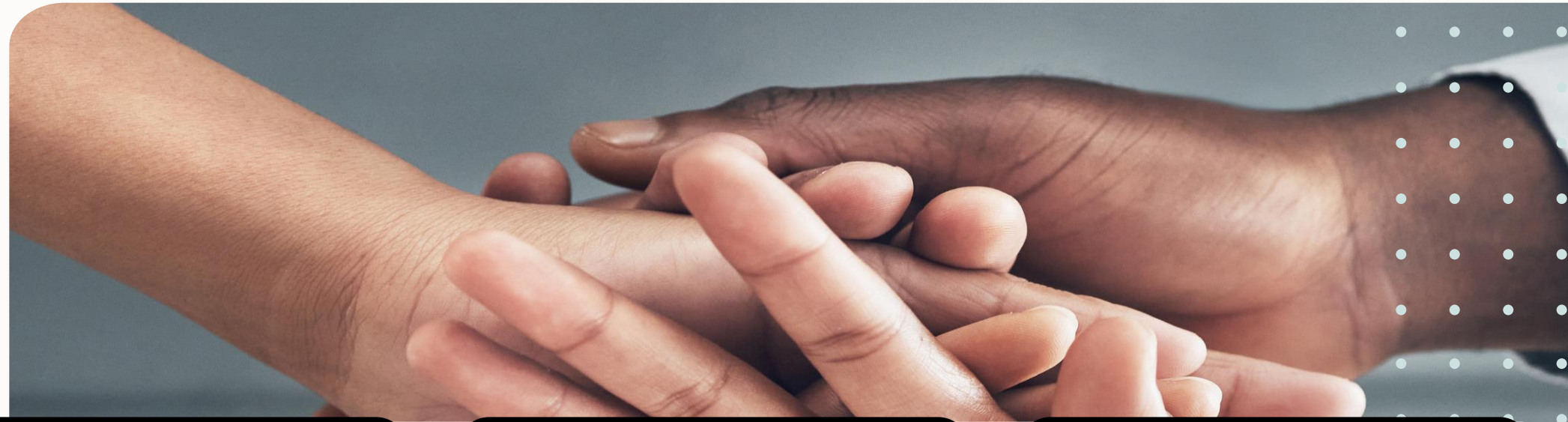
- Established in 1971, Meridian Healthcare has been providing behavioral health treatment and services to North Central Florida communities for over 50 years.
- With locations serving 14 counties across North Central Florida, Meridian is highly committed to supporting and restoring hope to individuals in all of the communities we serve.
- It is Meridian's ambition to transform our communities, together, from the inside out.



-  Meridian Campus
-  24/7 Crisis Facilities, Residential Treatment & Primary Care Clinics



# OUR VALUES



## Hope

A healthy dose of *hope* helps us stay positive on the most challenging days.



## Empathy

We are committed to compassion, understanding, and *genuine* human connection.



## Accountability

We all have a *responsibility* to work with integrity as we strive to deliver high-quality care.



## Resilience

Our community depends on us to show up and *continually* give our best.



## Teamwork

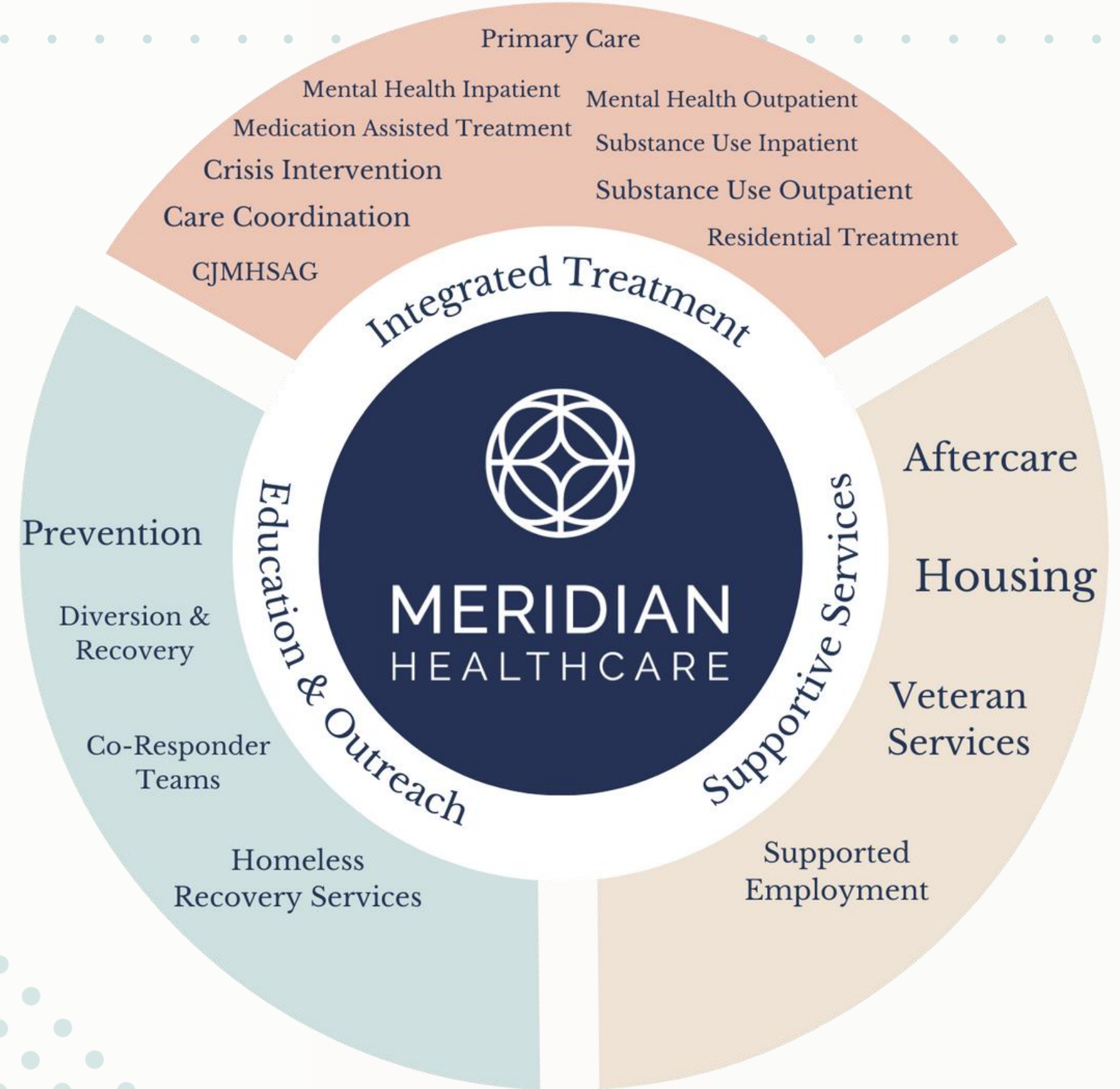
*Collaboration* is key to providing exceptional care.



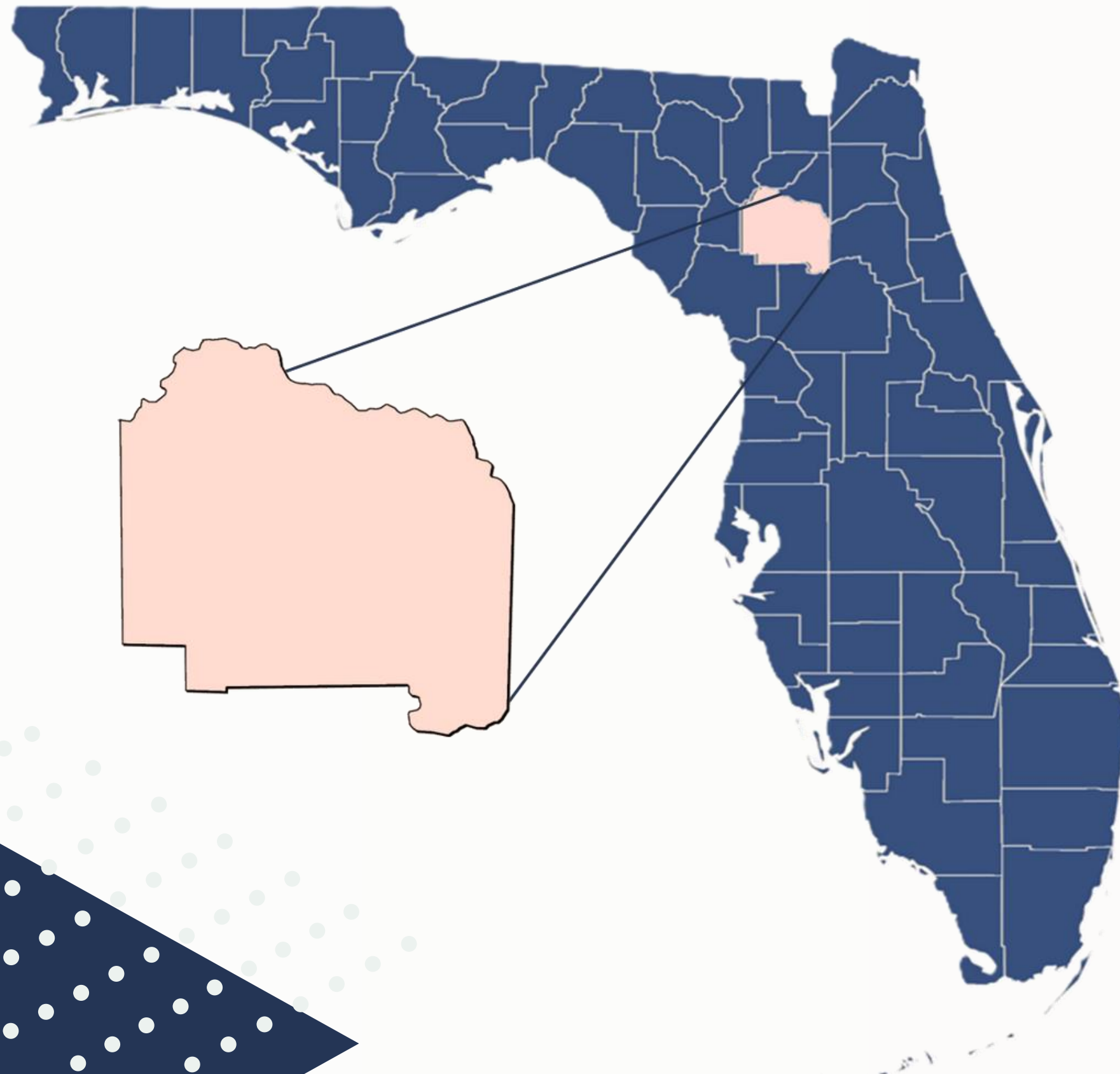
# OUR PROGRAMS

At Meridian, we provide a comprehensive continuum of care to address the needs of children, adults, and families.

Driven by our commitment to community well-being, we continue to grow and evolve to meet the unique needs of those we serve across our service areas.



# TELEHEALTH SERVICES



01

## Service Utilization

3490 Alachua County residents have received a total of 21,863 telehealth services in FYE 2025\*

02

## Increased Access to Care

Telehealth permits individuals faster access to treatment and allows them to be seen in the comfort of their own home

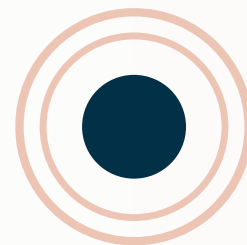
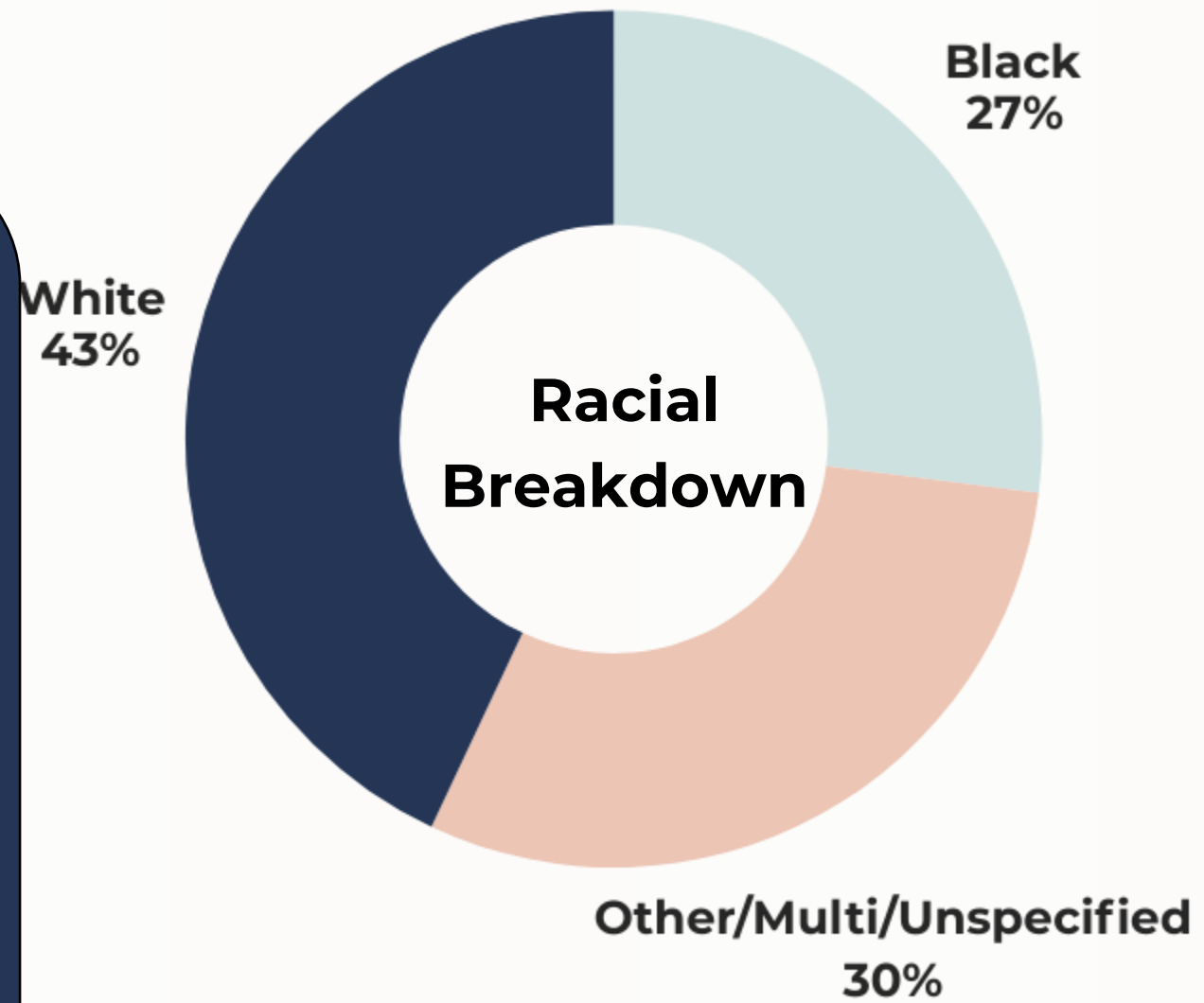
03

## Device Assistance

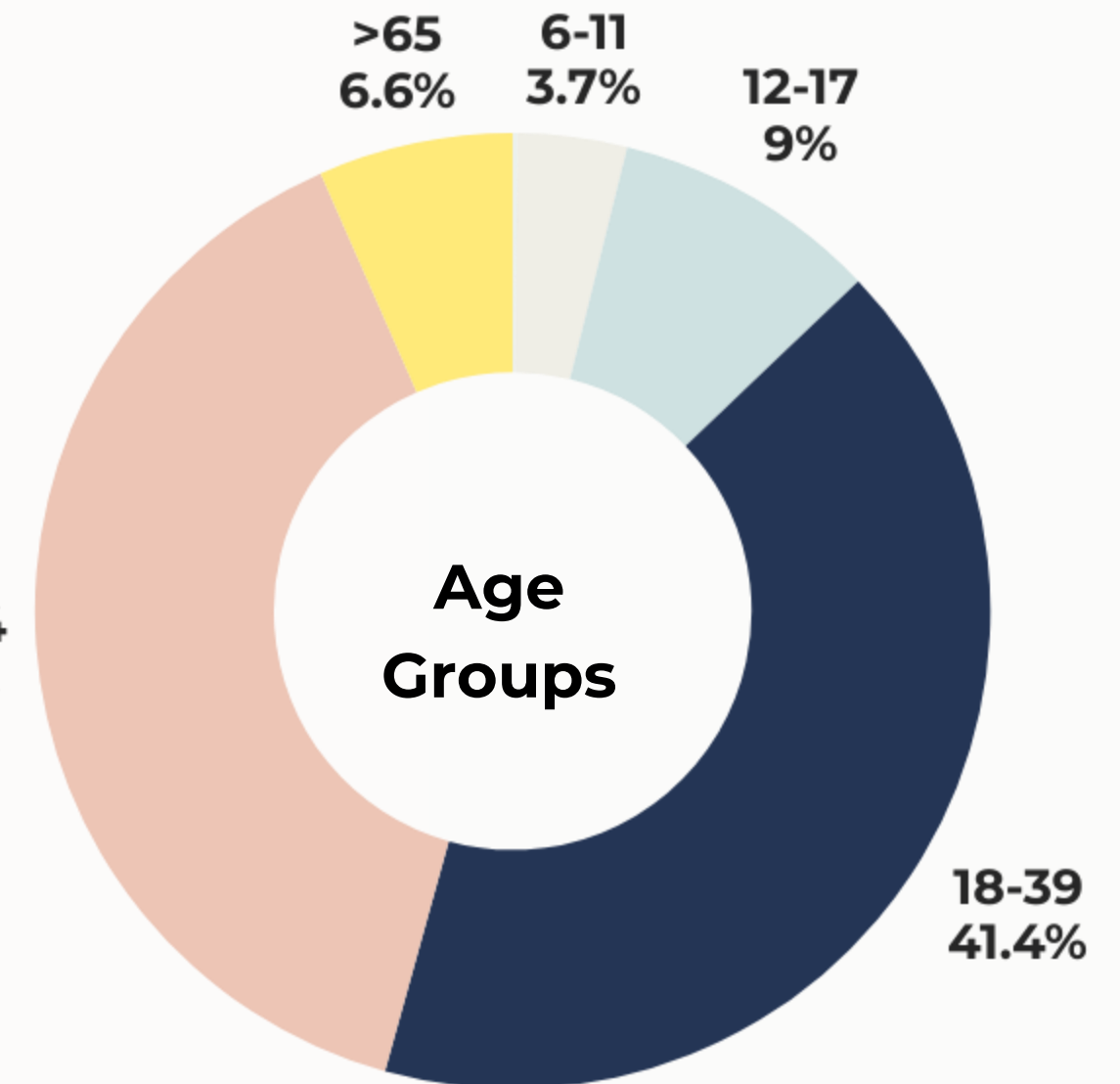
Individuals with no device may qualify for a Meridian-provided tablet with data plan at no cost to them

\* July 2024 through June 2025

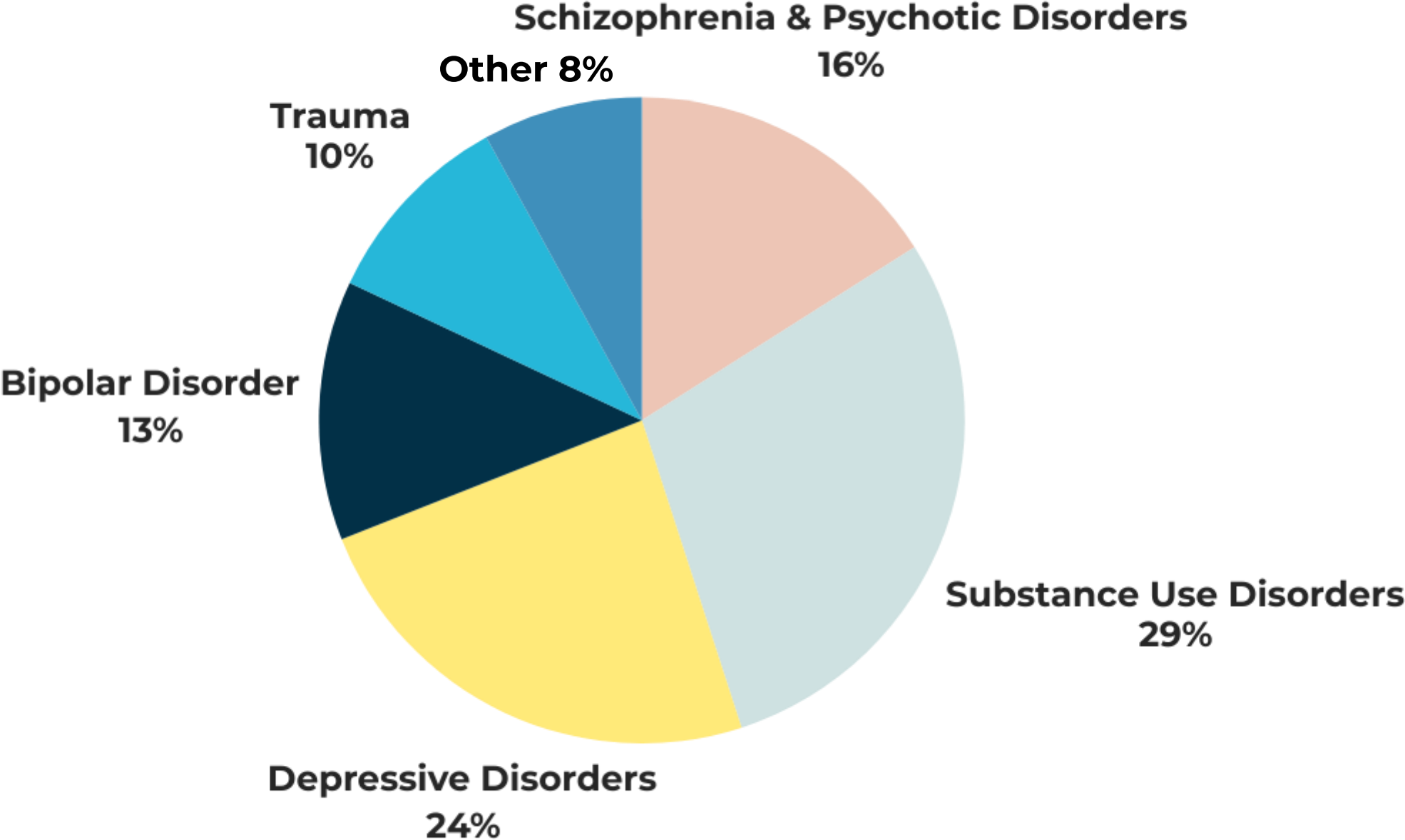
# WHO WE SERVE IN ALACHUA COUNTY



**6% of Clients Served  
Identified as  
Hispanic**

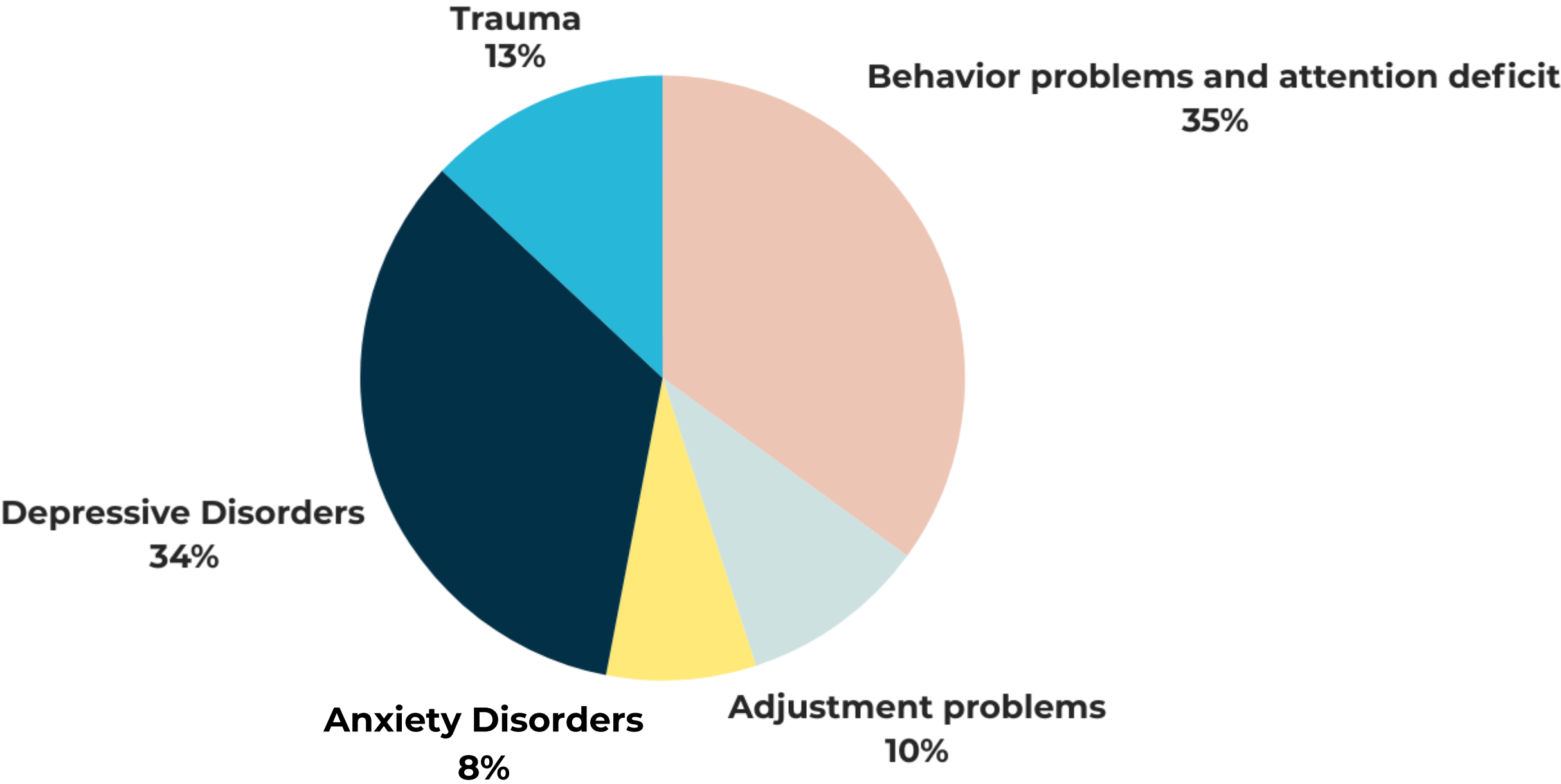


HELPING  
ADULTS IN  
OUR  
COMMUNITY





HELPING  
CHILDREN  
IN OUR  
COMMUNITY





# WHAT DO CLIENTS SAY?

- Improved functioning and reduction of symptoms overall

**75% of Adults**

**74% of Children**



I would return to Meridian if I ever have behavioral health needs in the future



I would recommend Meridian to a family member or friend who needed help



Meridian staff believe I can get better



Meridian's services have helped me

## National Benchmarks

- Recovery rates from serious mental illness are approximately 33% for a period of 12 months or longer
- Recovery rates from addictions are estimated at 57% after 12 months
- Recovery rates for diabetes, hypertension, and other chronic illnesses range from 37-56%



# SERVICES WE PROVIDE TO ALACHUA COUNTY RESIDENTS

July 2024  
through  
June  
2025





# HOUSING AND HOUSING SUPPORT SERVICES



## The Lodge at Meridian

The Lodge at Meridian provided transitional housing to 84 individuals.



## HUD Housing Units

67 HUD units managed by Meridian providing individuals stable, safe, long-term housing.



## New Horizons Properties

Interrelated corporation/properties with the mission of providing permanent housing for individuals with mental health challenges

- Joyce House (8 Bed Facility)
- Transitions (15 Bed Facility)
- Sunset/Satellite (20, 1 Bedroom units)
- Choice Apartments (24 leases of 1 and 2 Bedroom units)



# FISCAL YEAR 2025 ACCOMPLISHMENTS



## Court Diversion Grant

- DCF state funded grant to divert individuals with opioid or other substance use disorders to treatment and services that reduce criminal justice involvement and promote successful community reintegration.
- Capacity to serve 150 persons concurrently.



## Treatment of Individuals Experiencing Homelessness

- SAMHSA Federal grant that supports an interdisciplinary team providing outreach, screening, and treatment to persons experiencing homelessness along with serious mental illness, along with services that support permanent housing.
- Partnering with GRACE, Gainesville Opportunity Center, and Gainesville Fire Rescue
- Supports 45 persons concurrently



## Criminal Justice Mental Health Substance Use Reinvestment Grant

- Alachua County and Meridian collaborative grant.
- Funds an interdisciplinary team treating persons involved in the legal system to reduce recidivism, increase independence, while enhancing family and social relations.
- Supports 75 persons served concurrently.



# CENTRAL RECEIVING FACILITY

The Central Receiving Facility opened its doors in January 2025, providing a single access point for law enforcement, voluntary referrals, and individuals referred through Baker Acts.

The facility features:

- 24/7 access and admissions
- Dedicated law enforcement and emergency transport entrance
- Person centered assessments and connection to the appropriate level of care and services based on needs

Since opening in January, the facility has served approximately 756 Alachua County residents (620 adults and 136 children).

Drop-off processing times for law enforcement officers has been reduced to less than 4 minutes.

The CRF Advisory Council has been established and continues to meet quarterly.



# PAYER MIX

## Payers

Meridian accepts a wide range of payers, ensuring that local, public funds are the payer of last resort.

## Poverty

The majority of clients we see are at or below federal poverty guidelines.

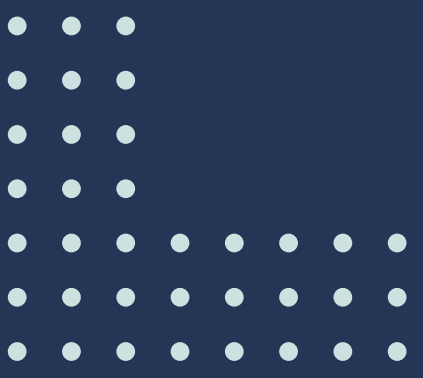
- 87.41% for Alachua County
- 2% of services provided were ineligible for any subsidy to address the cost of care.

## Indigent Care

Indigent care is funded through Medicaid, State DCF and local matching funds.

- 48% of services provided in FYE 2025 have been paid for with indigent care funding from the State and County
- 21% were covered by Medicaid
- 29% have some form of insurance, but insurance only covers 12% of the services these individuals need and receive





# FUNDING REQUIREMENT



## Meridian Requirement

Meridian is required to generate local matching funds for some of our state and federal funds. Our expected FYE 2026 local match requirement is \$2,346,078.



## Local Match

We are requesting the same amount as last year to go towards the local match required, keeping the County contract with Meridian at \$895,556.



# CONTACT INFORMATION

## Email

lauren\_cohn@mbhcci.org

## Phone

352.374.5600 ext. 8220

## Website

[www.mymeridianhealthcare.org](http://www.mymeridianhealthcare.org)

## Mailing Address

1565 SW Williston Road  
Gainesville, FL 32608

