

Three solid-colored squares are arranged horizontally on the left side of the slide: a grey square, a blue square, and a green square.

UPDATE: Alachua County Transportation Planning



Presentation Overview

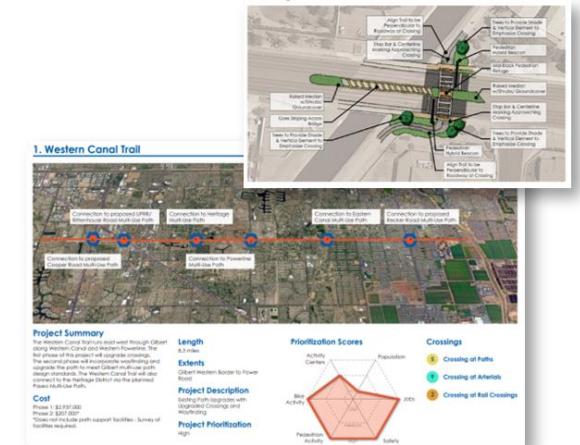
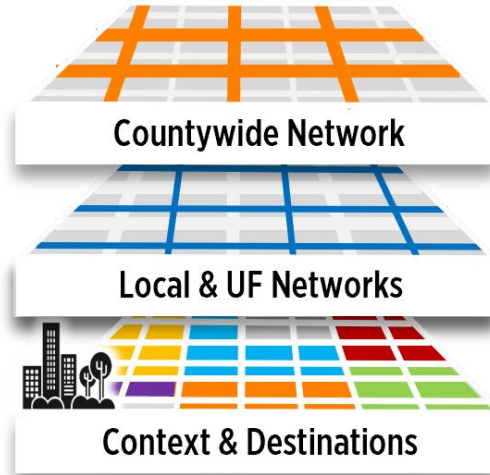
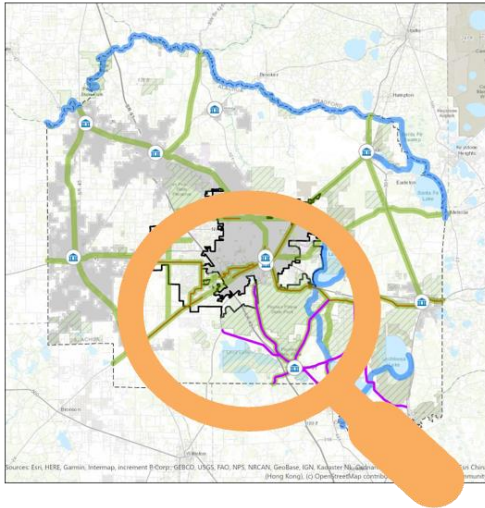
1. Countywide Bicycle Pedestrian Master Plan
2. Alachua County Safe Streets & Roads for All (SS4A) Action Plan
3. US 41 & Poe Springs Road

Community Engagement



Countywide Bicycle Pedestrian Master Plan

Project Approach



Alachua County Today

- Data inventory/analysis
- Understand destinations
- Assess how our system is currently performing

Community Engagement

1. Listen & Understand

What Is Our Active Transportation Network?

- Define context
- Create vision for countywide and local networks
- Goals, Policies, and Program Refinement

Community Engagement

2. Refine the Vision

What Can Our Network Look Like?

- Identify gaps and needs within active transportation networks
- Evaluate projects and refine the networks

How Do We Make It Happen?

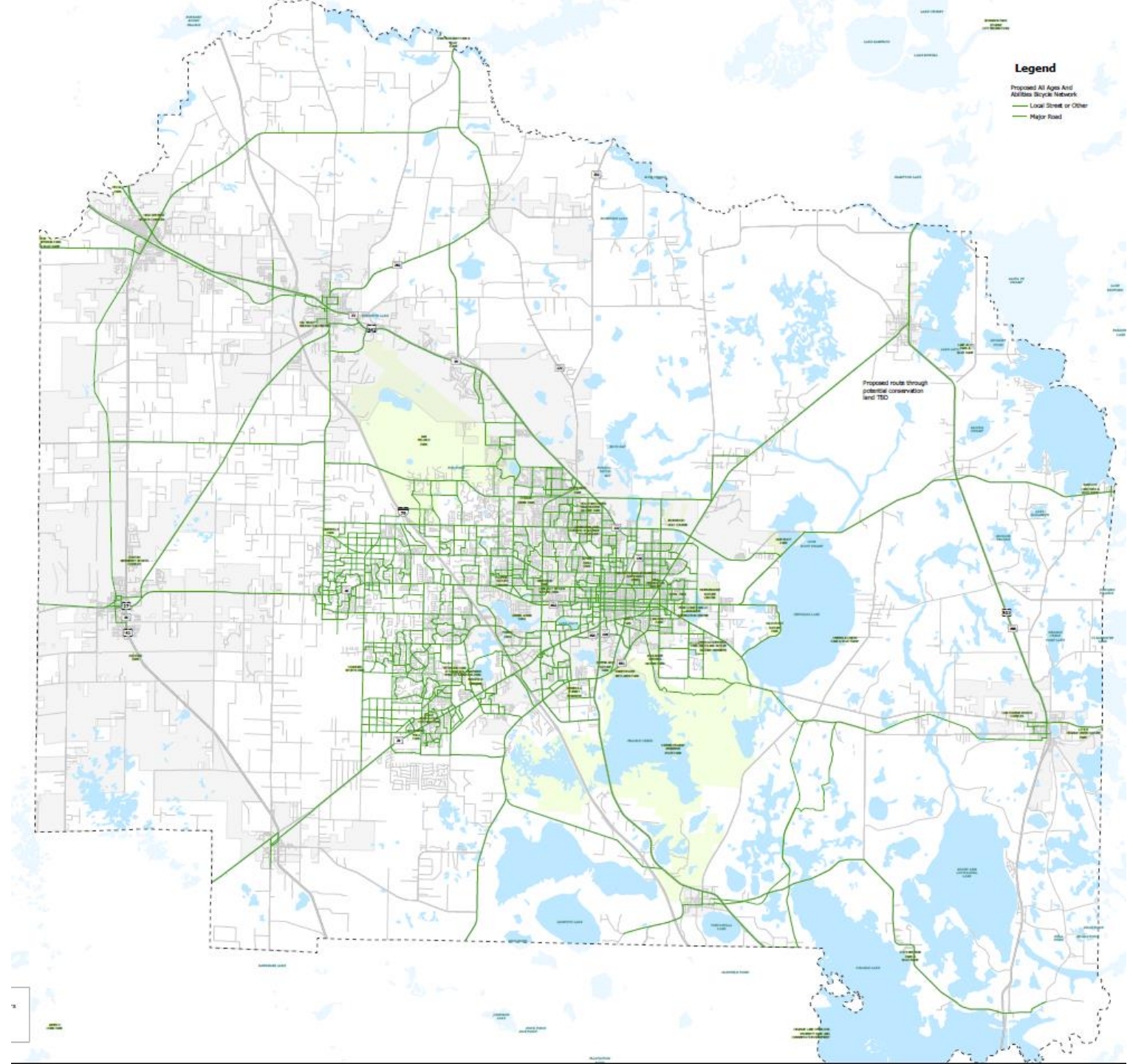
- Develop cost estimates and funding strategies
- Prioritize improvements
- Create phased implementation plan

Community Engagement

3. Present the Plan

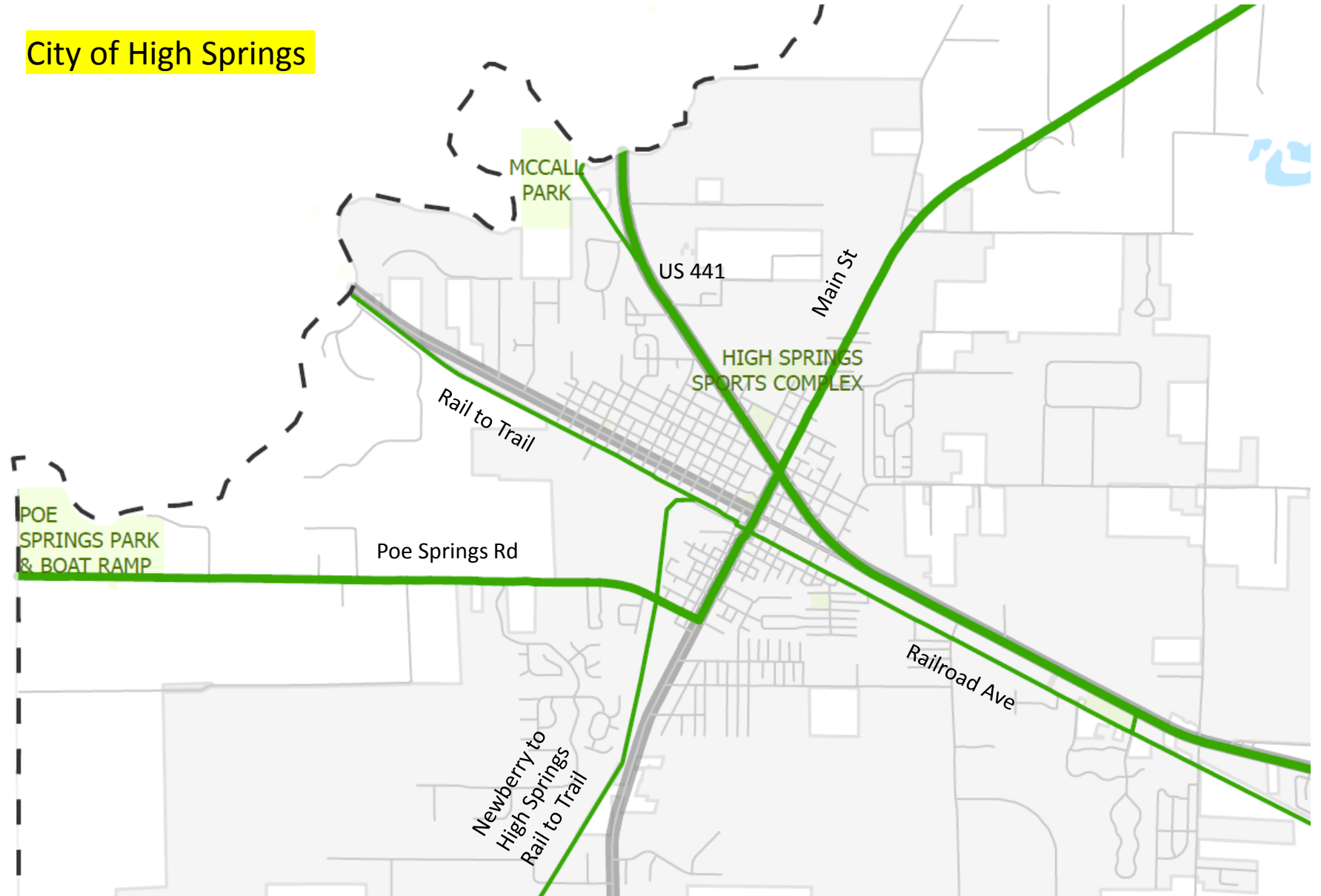
DRAFT

Proposed 'All Ages & Abilities' Bicycle Network



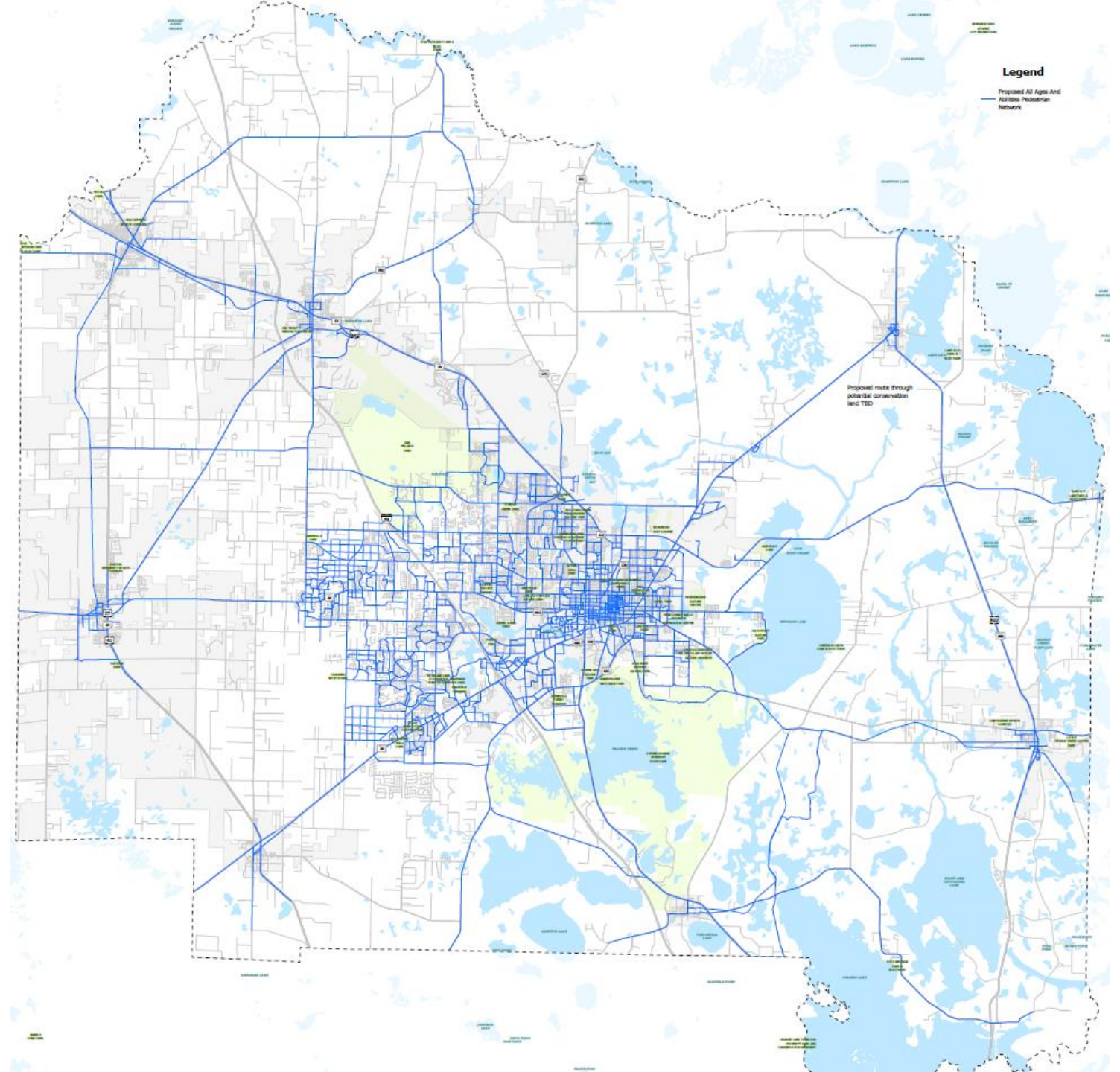
DRAFT

Proposed 'All Ages & Abilities' Bicycle Network



DRAFT

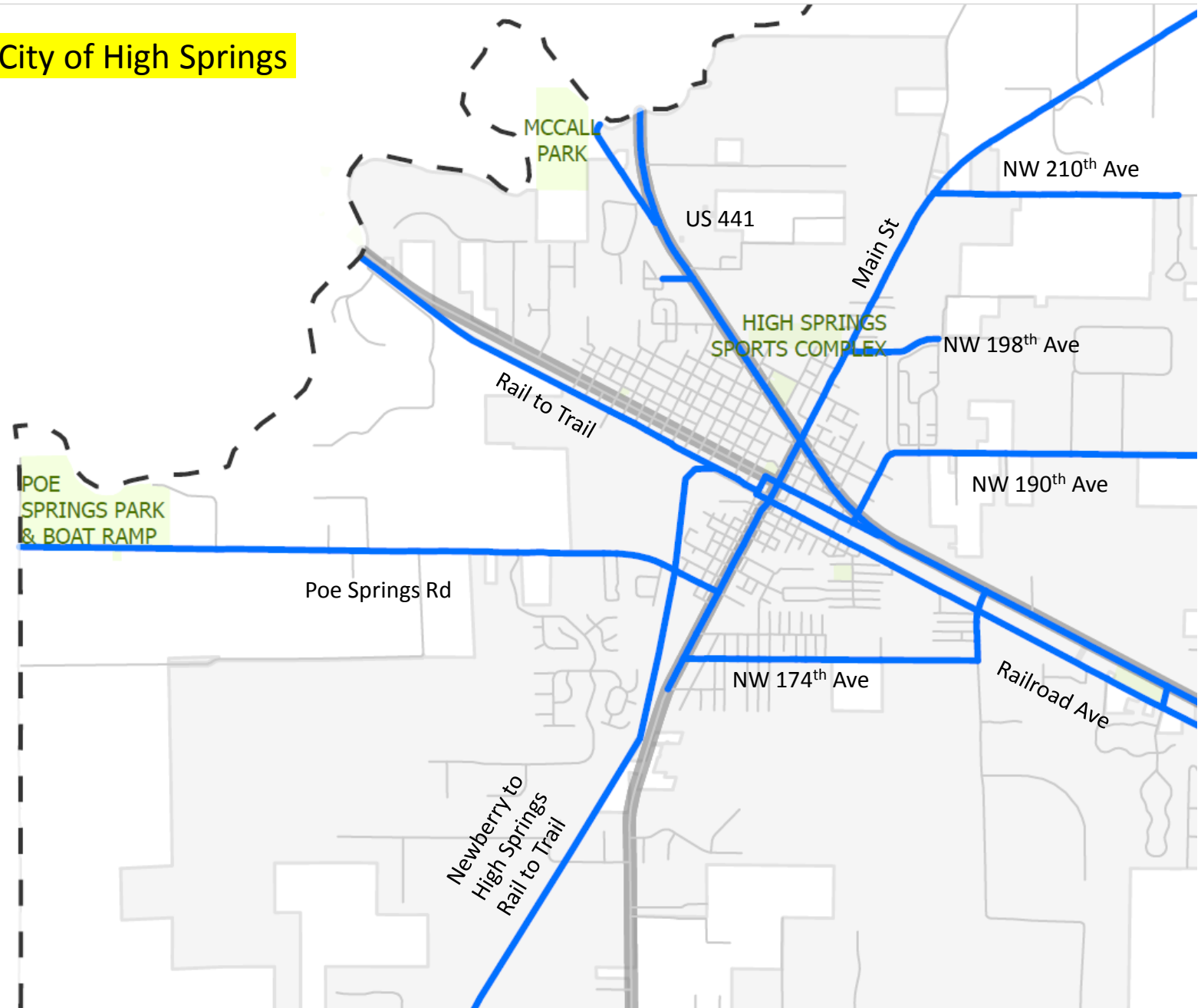
Proposed 'All Ages & Abilities' Pedestrian Network



DRAFT

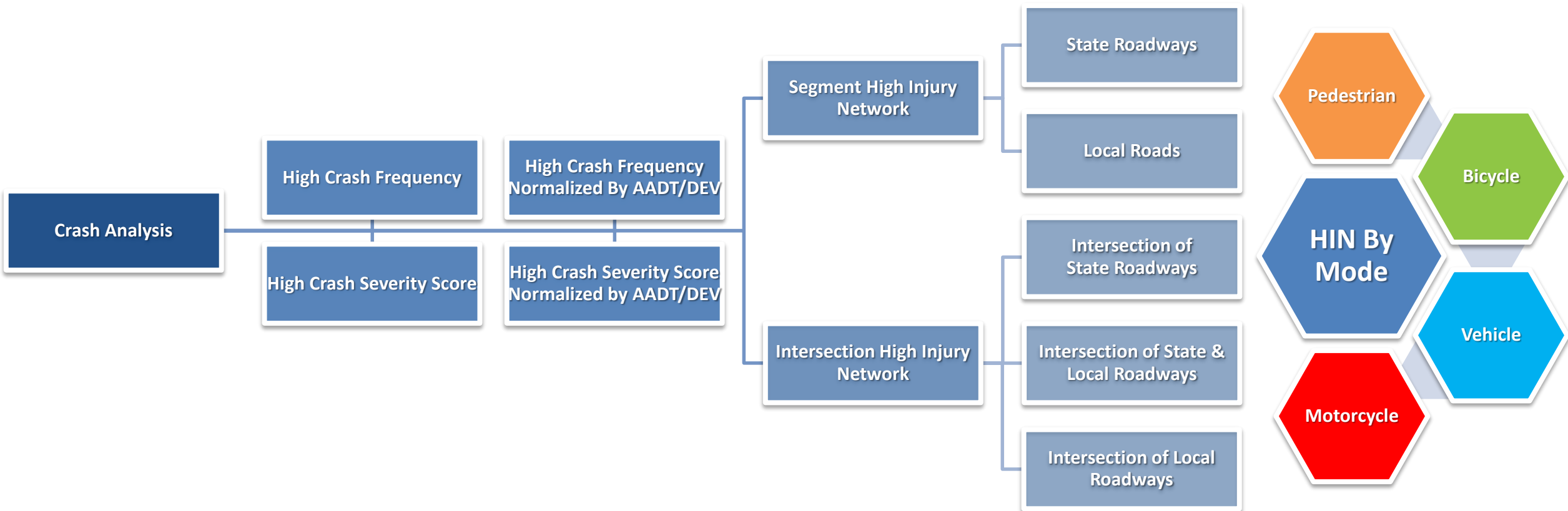
Proposed 'All Ages & Abilities' Pedestrian Network

City of High Springs



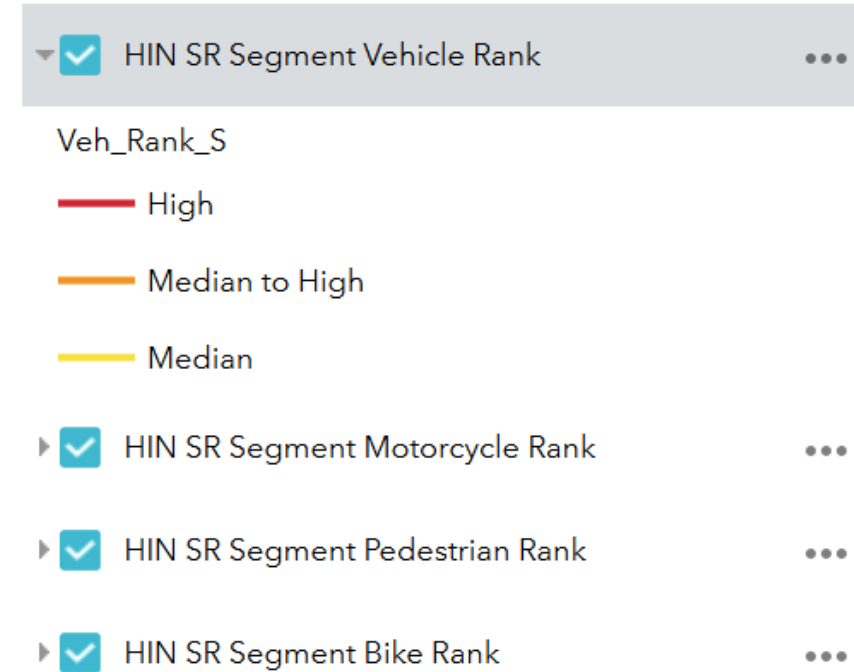
Safe Streets & Roads for All (SS4A) Action Plan

High Injury Networks Methodology



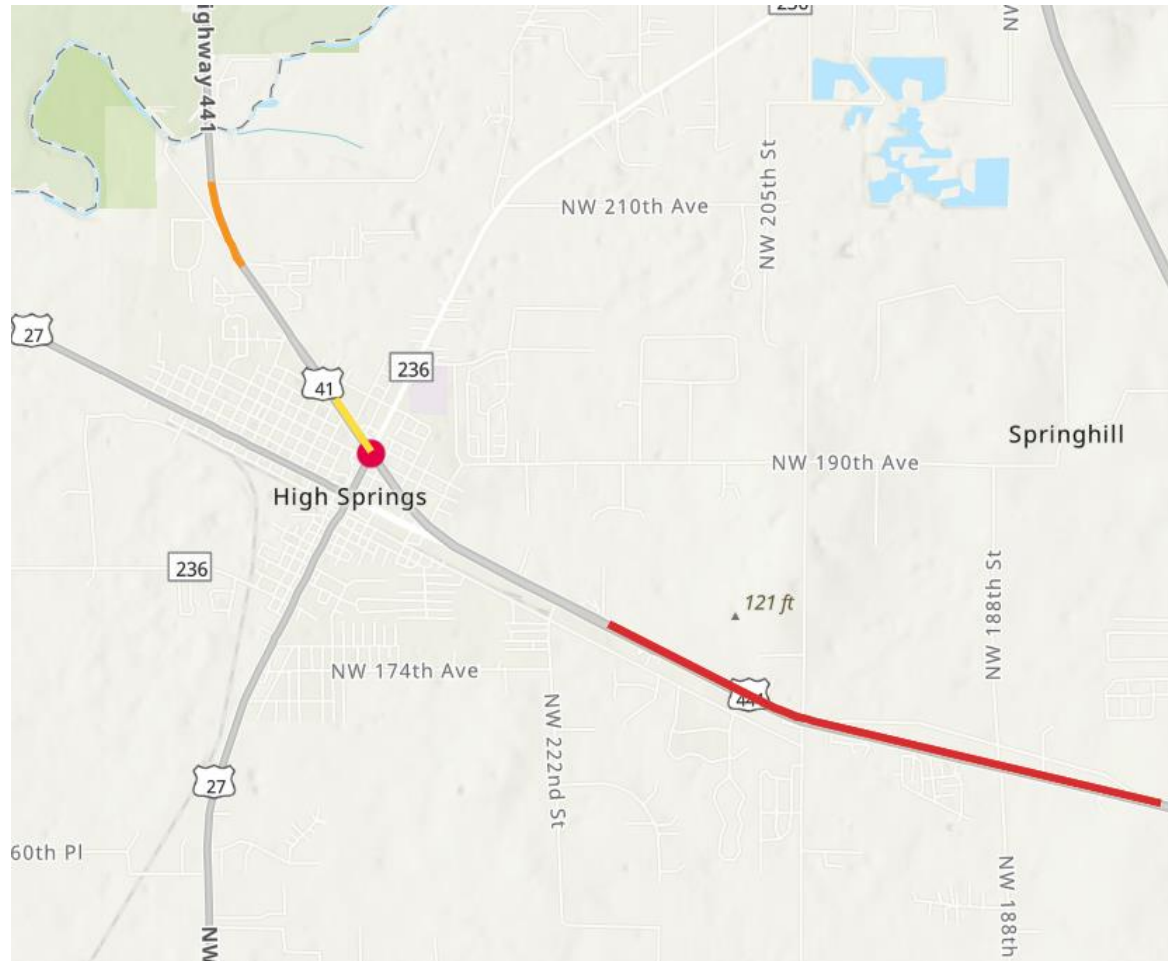
Safe Streets & Roads for All (SS4A) Action Plan

Sample High Injury Network

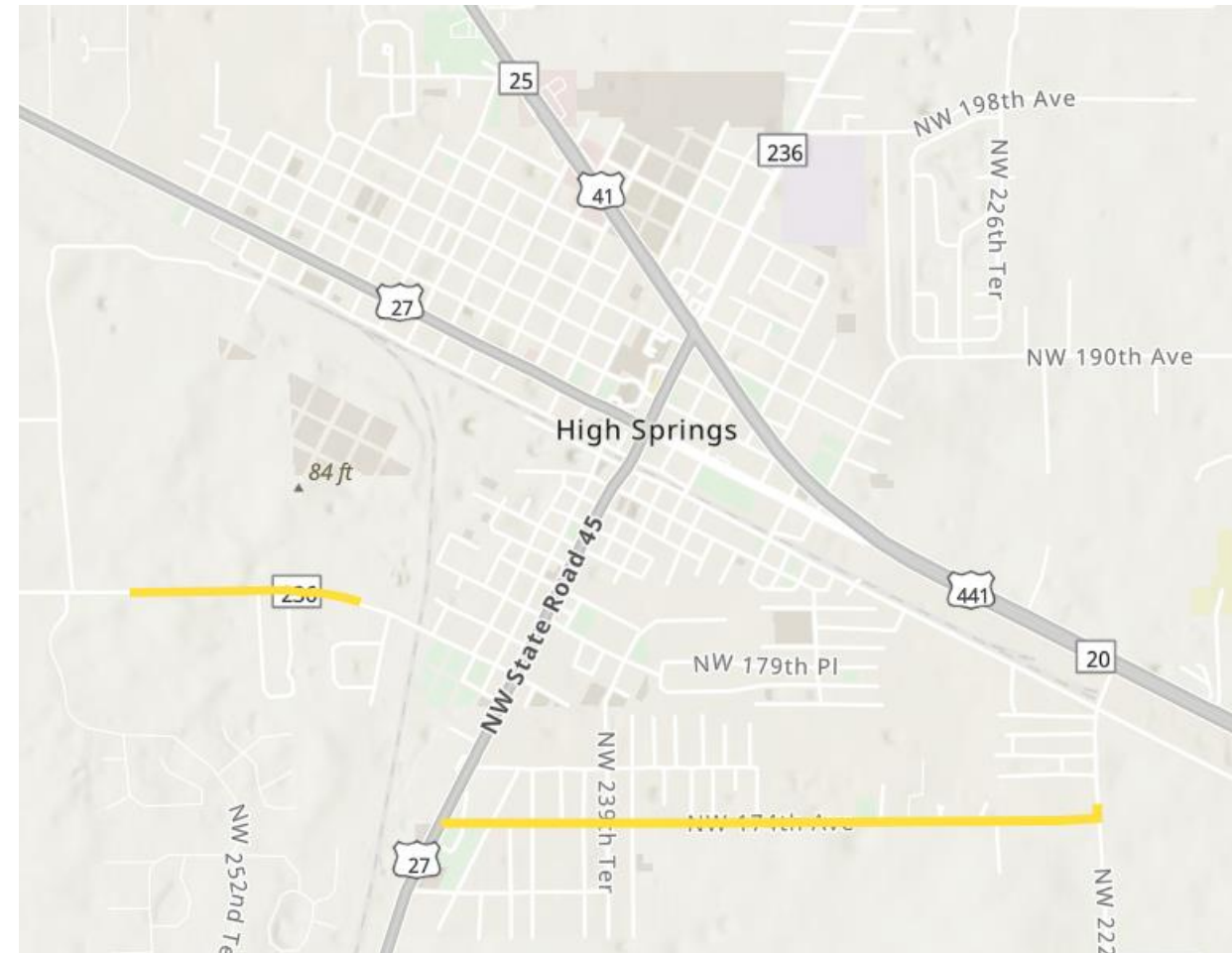


Safe Streets & Roads for All (SS4A) Action Plan

State Roads



Local Roads



Next Steps & How to Get Involved

DISCOVER
200
1824-2024

ALACHUA
COUNTY
BICENTENNIAL

Select Language

Powered by Translate

How Can We Help You? ▾

County Offices ▾

Business Resources ▾

Contact Us ▾

Home > County Offices > Growth Management > Planning

GROWTH MANAGEMENT

Transportation Planning

Mobility Plan

Kincaid Loop Trail

Countywide Bicycle Pedestrian Master Plan

Safe Streets & Roads for All (SS4A) Action Plan

Alachua County

Safe Streets and Roads for All (SS4A) Action Plan

About

Events

Updates

Contact

Let's Make Alachua Streets Safer for Everyone!

A crisis has been declared in Alachua County due to the number of traffic-related crashes and fatalities in our community. To help combat this problem, we are creating a **Safe Streets and Roads for All (SS4A) Action Plan**. This plan is intended to identify key safety issues, develop policies to address those concerns, and ultimately implement solutions that create a safer transportation system for all users.

Our Alachua County team is committed to finding solutions that reduce traffic crashes, injuries, and deaths on our roadways. We invite you to share feedback on the roadways you feel are unsafe and need more attention. Your insight will help us prioritize key corridors of concern within Alachua County.

ALACHUA COUNTYWIDE BICYCLE & PEDESTRIAN MASTER PLAN - DRAFT BICYCLE NETWORK

Welcome to our online map! The feedback collected through this map will inform the Alachua Countywide Bicycle & Pedestrian Master Plan (BPMP).

The Alachua Countywide BPMP is a plan for a connected network of safe, comfortable active transportation facilities to provide options for Alachua County residents to get where they want to go whether they are walking or biking.

This map in particular shows the DRAFT Bicycle Network. The BPMP will identify projects on this network to improve the safety and comfort of people biking.

Let us know if there are any routes we missed and what changes you'd like to see on the streets you travel on.

Important Note: Some connections shown go through private property and are ideas for the future. These would only happen if property owners agree, future development occurs, or easements are created. Routes and connections may change as plans evolve.

Map Instructions

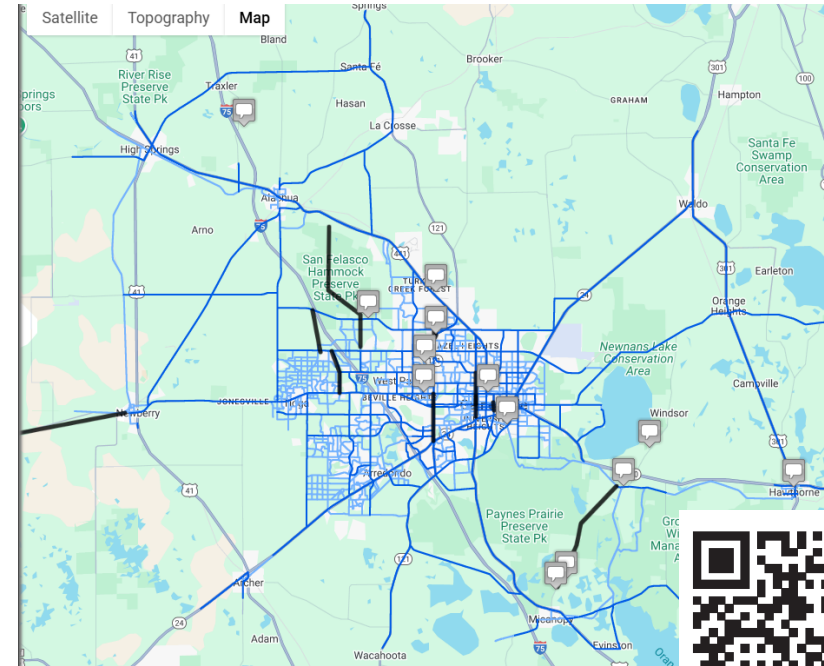
Zoom in to your desired location on the map.

Double click on the location to open a comment box. In the comment box, describe your thoughts and click "Create Comment" to save.

To draw a line, double click on the map and follow the pop-up instructions to single-click the approximate path of your desired line. Double click again where you want the line to end to stop drawing.

[View a list of existing comments →](#)

© 2007-2025 Kittelson & Associates, Inc. unless otherwise noted. Admin login



Alachua Countywide Bicycle & Pedestrian Master Plan and Alachua County Safe Streets for All Safety Action Plan Community Survey #2

Introduction

Alachua County is conducting this survey to gather feedback on project goals to improve walking, biking, and driving in Alachua County. This survey should take around 5-10 minutes to complete.

Your feedback is critical to the future of Alachua County. Thank you for taking the time to share your thoughts with us!



BikePedMasterPlan



SS4AActionPlan

Next

US 41 & Poe Springs Road

Background

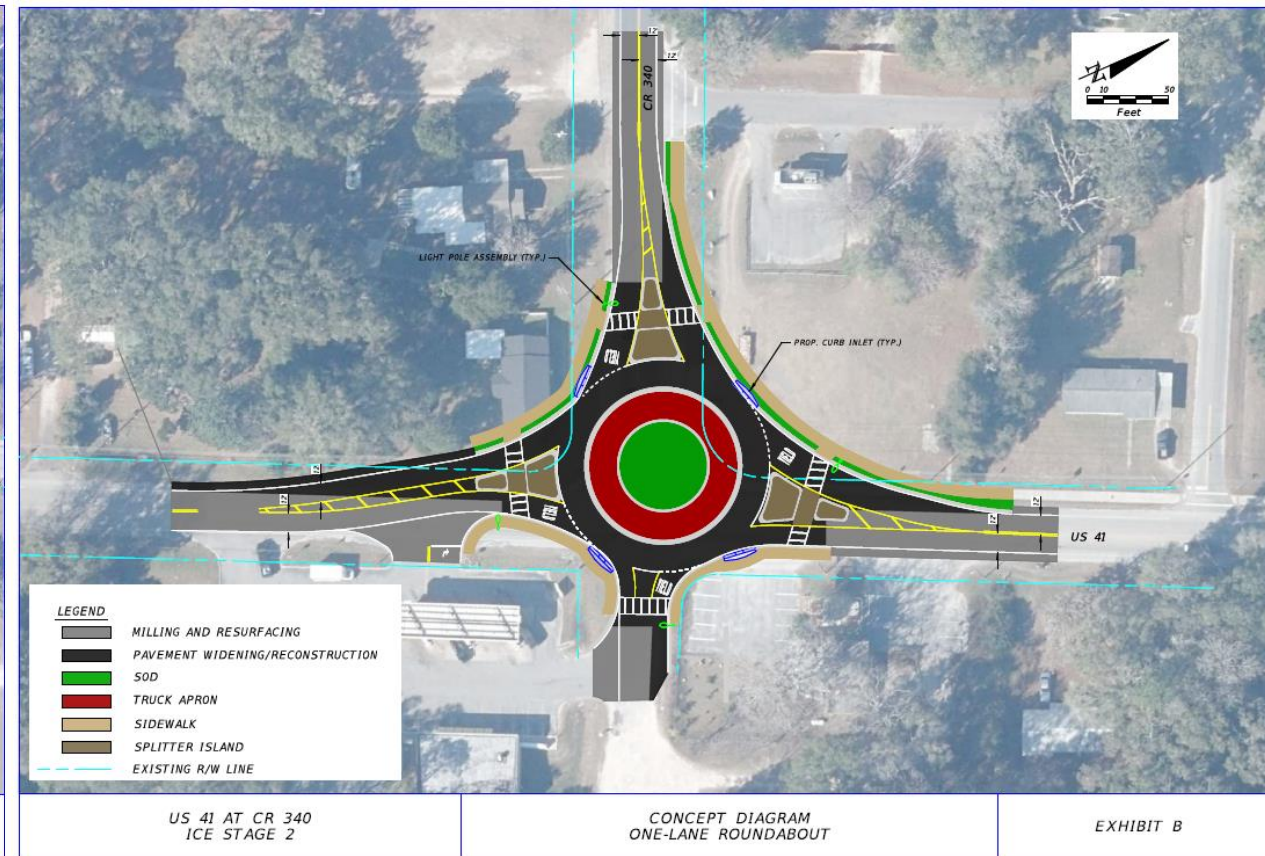
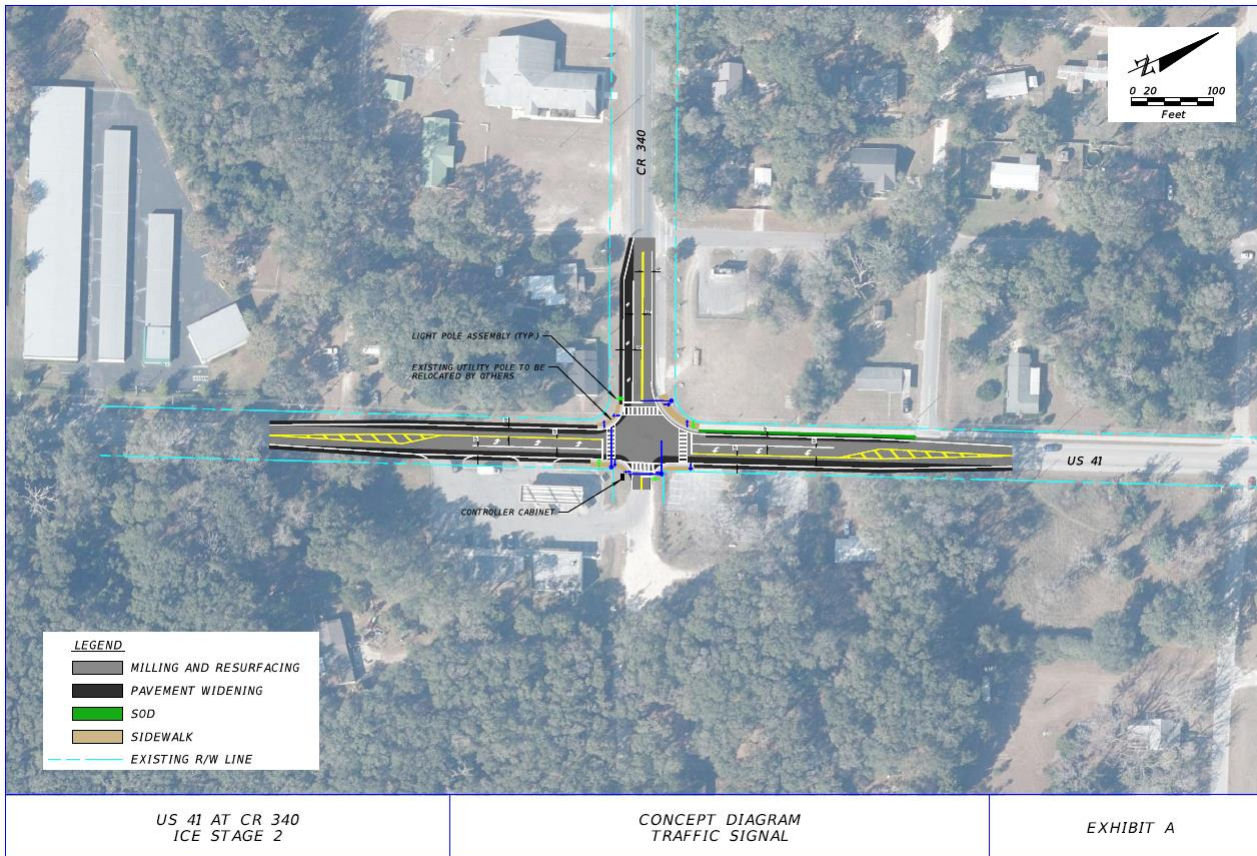
FDOT District Two Traffic Operations initiated an investigation into **whether the US 41/CR 340 intersection met warrants for signalization.**

The intersection was **found to meet MUTCD Warrant 1** (eight-hour) and **Warrant 2** (four-hour).

Following the signal warrant analysis, a **Stage 1 Intersection Control Evaluation (ICE) was completed.**

It was determined that a **Traffic Signal** and **one-lane roundabout** should be **advanced to Stage 2 for further analysis.**

US 41 & Poe Springs Road



US 41 & Poe Springs Road

Based on the Stage 2 ICE Analysis, it is recommended that a One-lane Roundabout be installed at the US 41/CR 340 intersection. The One-lane Roundabout received a better B/C ratio, a better Crash Prediction Rank, and a better Safe System Intersection rating compared to the Traffic Signal option.

FDOT did not include this improvement in a recent 'RRR' (resurfacing) project scope for SR 27/US 41.

MTPO may consider adding it to its List of Priority Projects, which needs to be adopted annually by March.



Questions or Comments?

Alison Moss, AICP
Transportation Planning Manager
Growth Management
amoss@alachuacounty.us
352-374-5249 ext. 4574 (office)