



VII. Action Item B



Metropolitan Transportation Planning Organization

For the Gainesville and Alachua County Area

June 2, 2025

MEETING MEMORANDUM

To: Metropolitan Transportation
Planning Organization

From: Brad Thoburn

Subject: **Long Range Transportation Plan – Needs Plan**

RECOMMENDATION

It is recommended that the Metropolitan Transportation Planning Organization Board review and approve the Long Range Transportation Plan (LRTP) Needs Plan.

BACKGROUND

The Metropolitan Transportation Planning Organization for Gainesville and Alachua County Area (GMTPO) is currently updating the 2050 Long Range Transportation Plan. The Needs Plan is a critical component of the LRTP, guiding the identification and evaluation of multimodal transportation needs across the regional roadway network. The LRTP Needs Plan is used to develop the cost feasible plan.

The LRTP Needs Plan Executive Summary is attached.

COMMITTEE REVIEW

BPAB: Several comments requesting infrastructure for vulnerable road users prioritized over expansions of infrastructure for cars.

TAC: Requested revisions to the E+C for projects outside of the five year work program. City and County staff requested modification and removal of certain projects. This required rerunning the model to refine the final Needs List. The TAC agreed to a subsequent meeting on May 28 of a TAC Sub Group including Ms. Leistner, Ms. Moss and Mr. Hall to review and confirm revisions where consistent with direction from the TAC. The TAC Sub Group met on May 28 **(insert results)**

CAC: Approved by a vote of 3-1, with Mr. Escalante voting no, the LRTP Needs Plan pursuant to the proposed revisions by the TAC.

Attachment



2050 Long Range Transportation Needs Plan Executive Summary

May 2025

2050 Long Range Transportation Plan

Needs Plan- Executive Summary

The Needs Plan serves as a critical component of the 2050 Gainesville Metropolitan Transportation Planning Organization (MTPO) Long Range Transportation Plan (LRTP), guiding the identification and evaluation of multimodal transportation needs across the regional roadway network. The evaluation of needs was conducted based on the following goals and objectives of the LRTP (Table 1):

Table 1: 2050 LRTP Goals & Objectives

Goal	Objective
1. Support economic vitality	Improve mobility in high growth areas
	Improve mobility on heavy truck routes
2. Increase safety and security for motorized and non-motorized users	Reduce fatal & severe injury crashes
	Reduce fatal & severe injury crashes
	Maintain mobility on evacuation routes
	Improve safety for vulnerable road users
3. Increase accessibility and of people and freight	Improve multimodal access to public transit
	Improve bicycle and pedestrian
	Improve directness of freight hub connection
4. Protect environment	Limit impacts to natural resources like parks
	Limit impacts to historic and cultural
5. Enhance integration and connectivity of transportation systems across different modes	Fill gaps in sidewalk network
	Fill gaps in trail and bike lane network
	Improve transit service to major activity
	Improve transit service in transportation
	Improve roadway network connectivity
6. Promote efficient system management/operations	Increase use of technological and/or operational strategies
	Improve travel time reliability
7. Emphasize the preservation of the existing	Address pavement in poor condition

The evaluation process utilized a comprehensive, data-driven methodology to assess transportation system performance and to identify gaps and future demand. Multimodal needs were analyzed through the lens of anticipated population and employment growth, travel demand forecasts, safety evaluation and multimodal facilities. The plan integrates the needs of all users—motorists, pedestrians, bicyclists, micromobility users, transit riders, and freight traffic.

Table 2 shows the corresponding performance measures for each goal and objective, as well as the scoring scheme:

Table 2: Needs Evaluation Performance Measures

Goal	Objective	Criteria/Performance Measure
1. Support economic vitality	Improve mobility in high growth areas	0-2050 E+C V/C is less than 1 in high growth areas
		1-2050 E+C V/C is more than 1 in high growth areas
	Improve mobility on heavy truck routes	0-2050 E+C V/C is less than 1 on freight roadways
		1-2050 E+C V/C is more than 1 on freight roadways
2. Increase safety and security for motorized and non-motorized users	Reduce fatal & severe injury crashes	0-not on High Injury Network (HIN)
		0.5-not on Alachua HIN but on GNV High Risk Network (HRN)
		1-on High Injury Network
	Reduce fatal & severe injury crashes involving vulnerable users	0-not on vulnerable user HIN network
		1-on vulnerable user HIN network
	Maintain mobility on evacuation routes	0-2050 E+C LOS D or better on evacuation route
		1-2050 E+C LOS E or F on evacuation route
	Improve safety for vulnerable road users	0-without high vulnerable road users demand
		1-with high vulnerable road users demand
3. Increase accessibility and of people and freight	Improve multimodal access to public transit	0-sidewalk/bike lane w/in ½ mile of transit
		1-no sidewalk/bike lane w/in ½ mile of transit**
	Improve bicycle and pedestrian infrastructure in transportation disadvantaged areas	0-sidewalk/bike lane in TD area
		1-no sidewalk/bike lane in TD area**
	Improve directness of freight hub connection	0-with direct connection to freight hub
		1-without direct connection to freight hub
4. Protect environment*	Limit impacts to natural resources like parks and preservation areas	0-roadway capacity improvement in or near environmentally sensitive area
		1-not in or near environmentally sensitive area or operational improvement
	Limit impacts to historic and cultural resources	0- capacity improvement in or near historic/cultural resources
		1-not in or near historic/cultural resources or operational improvement

Goal	Objective	Criteria/Performance Measure
5. Enhance integration and connectivity of transportation systems across different modes	Fill gaps in sidewalk network	0-existing sidewalk
		1-no existing sidewalk**
	Fill gaps in trail and bike lane network	0-separated/buffered bike lane or path
		0.5-existing shoulder or bike lane***
		1-no existing bike lane or shoulder**
	Improve transit service to major activity centers	0-high level of transit service on major facilities accessing the activity centers
		1-low level of transit service on major facilities accessing the activity centers
	Improve transit service in transportation disadvantaged areas	0-high level of transit service in transportation disadvantaged areas
		1-low level of transit service in**
	Improve roadway network connectivity around activity centers	0 – low circuitry ratio
		1 – high circuitry ratio
6. Promote efficient system management/operations	Increase use of technological and/or operational strategies*	0-capacity improvement
		1-operational improvement
	Improve travel time reliability	0-on reliable roadways
		1-on unreliable roadways
7. Emphasize the preservation of the existing transportation system*	Address pavement in poor condition	0-on roads with good pavement condition
		1-on roads with poor pavement condition

*Objectives for project prioritization only.

**Roadways outside of the urban area boundary get half the points, roadways within urban area boundary but outside of the urban core and UF context area gets 0.75 points.

***Roadways outside of the urban area boundary get 0.125 points, roadways within urban area boundary but outside of the urban core and UF context area gets 0.25 points.

In addition to evaluating system performance, the data-driven Needs Plan process was also used to prioritize projects sourced from local and regional partners, including Alachua County, the City of Gainesville, the University of Florida, and the adopted projects from the 2045 L RTP.

The application of performance measures was completed in a disaggregate manner that grouped the objectives into four needs types categories to better specify what types of gaps, or needs, are present on the roadway network. The needs types include:

- Mobility
 - Evaluated with mobility objectives in goal 1.
 - Proposed projects related to improving mobility are prioritized with performance measures included in this type.
- Multimodal
 - Evaluated with objectives related to active transportation facilities, such as bike lanes, sidewalks and transit services.
 - Proposed projects aiming to improve the connection of active transportation facilities are prioritized with performance measures included in this type.
- Safety
 - Evaluated with the safety objectives in goal 2.
 - Proposed projects aiming to improve safety are prioritized with performance measures included in this type.
- Connectivity
 - Evaluated with objectives related to roadway connectivity around activity centers and freight hubs.
 - Proposed projects related to adding new roadways or extending roadways are prioritized with performance measures included in this type.

Each proposed project was scored and prioritized based on its alignment with the objectives and the type of needs it addresses.

Table 3 shows the needs type and the corresponding objectives.

Table 3: Needs Type

Needs Type	Objectives
Mobility/Safety (Goals 1&2)	Improve mobility in high growth areas
	Improve mobility on heavy truck routes Improve Safety on high injury network, evacuation routes
Multimodal/ Safety (Goals 2, 3 and 5, includes objectives related to multimodal)	Improve multimodal access to public transit
	Improve bicycle and pedestrian infrastructure in transportation disadvantaged areas
	Fill gaps in sidewalk network
	Fill gaps in trail and bike lane network
	Improve transit service to major activity centers
	Improve transit service in transportation-disadvantaged areas Improve safety on multimodal networks
Safety (Goal 2)	Reduce fatal & severe injury crashes
	Reduce fatal & severe injury crashes involving vulnerable users
	Maintain mobility on evacuation routes
	Improve safety for vulnerable road users
Connectivity (Goals 3 and 5 connectivity and accessibility objectives)	Improve roadway network connectivity around activity centers
	Improve directness of freight hub connection

The needs evaluations are mapped by the four needs types. Figure 1 to Figure 4 illustrate the results.

Figure 1: Mobility Needs Score

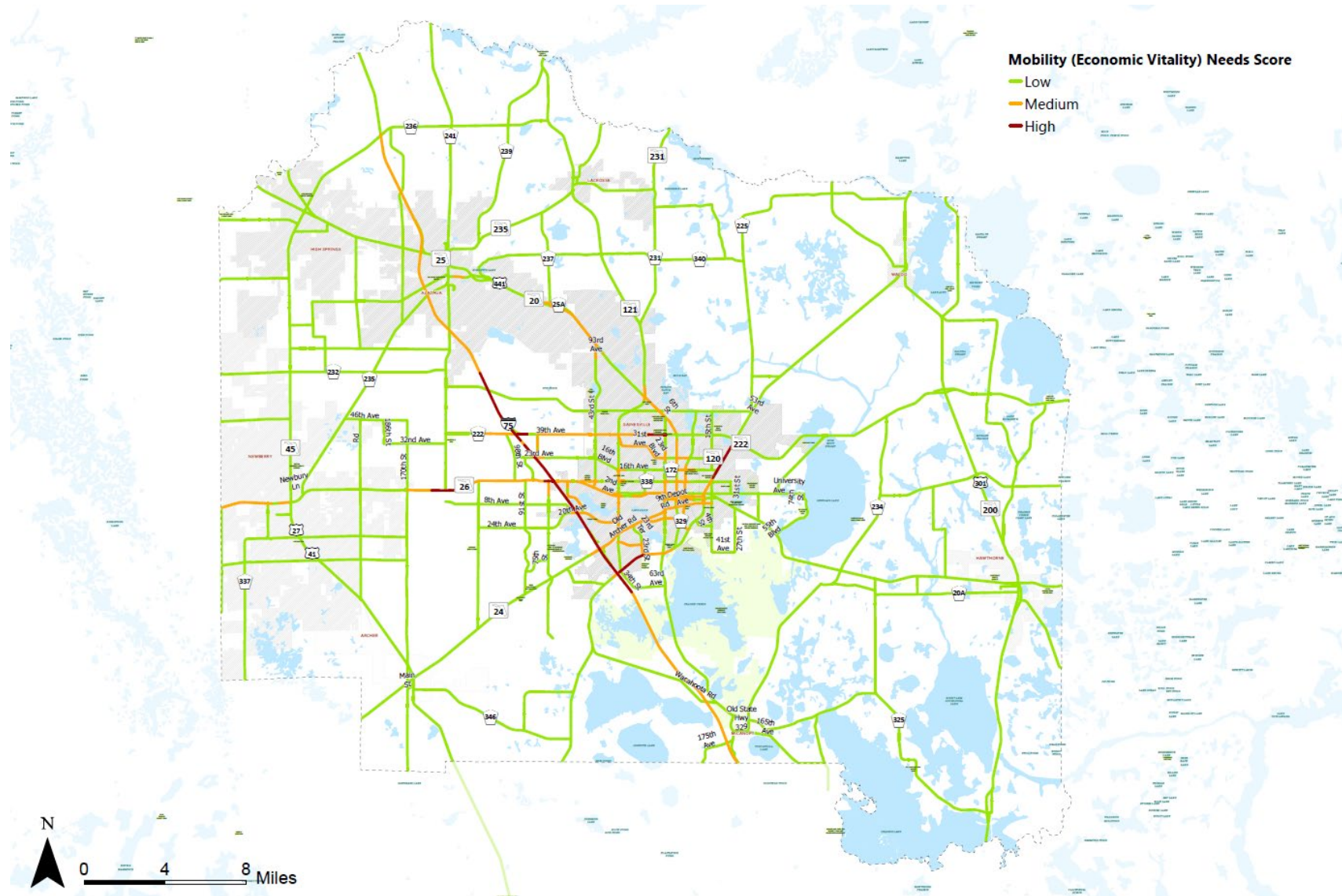


Figure 2: Multimodal/ Safety Needs Score

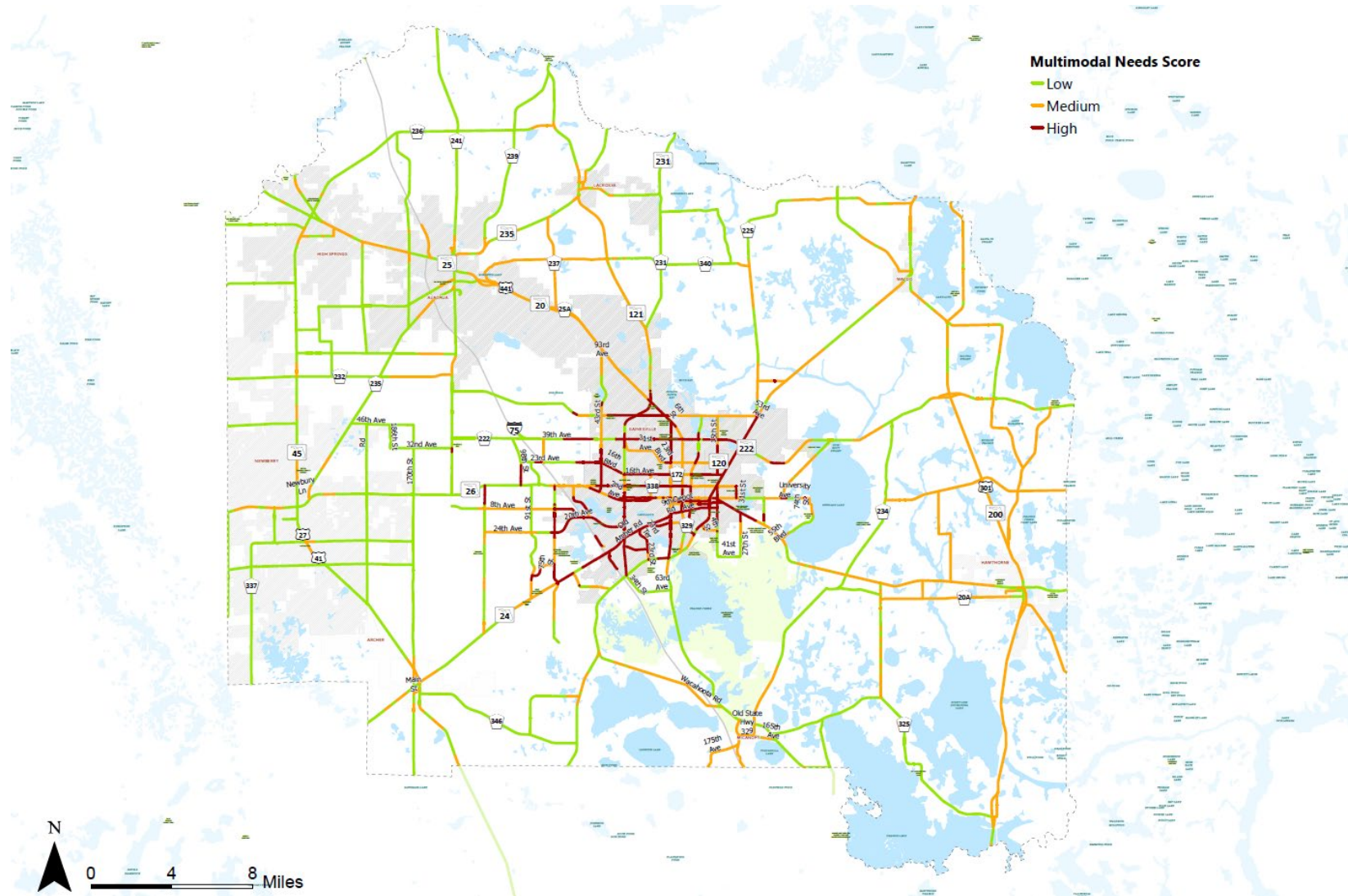


Figure 3: Safety Needs Score

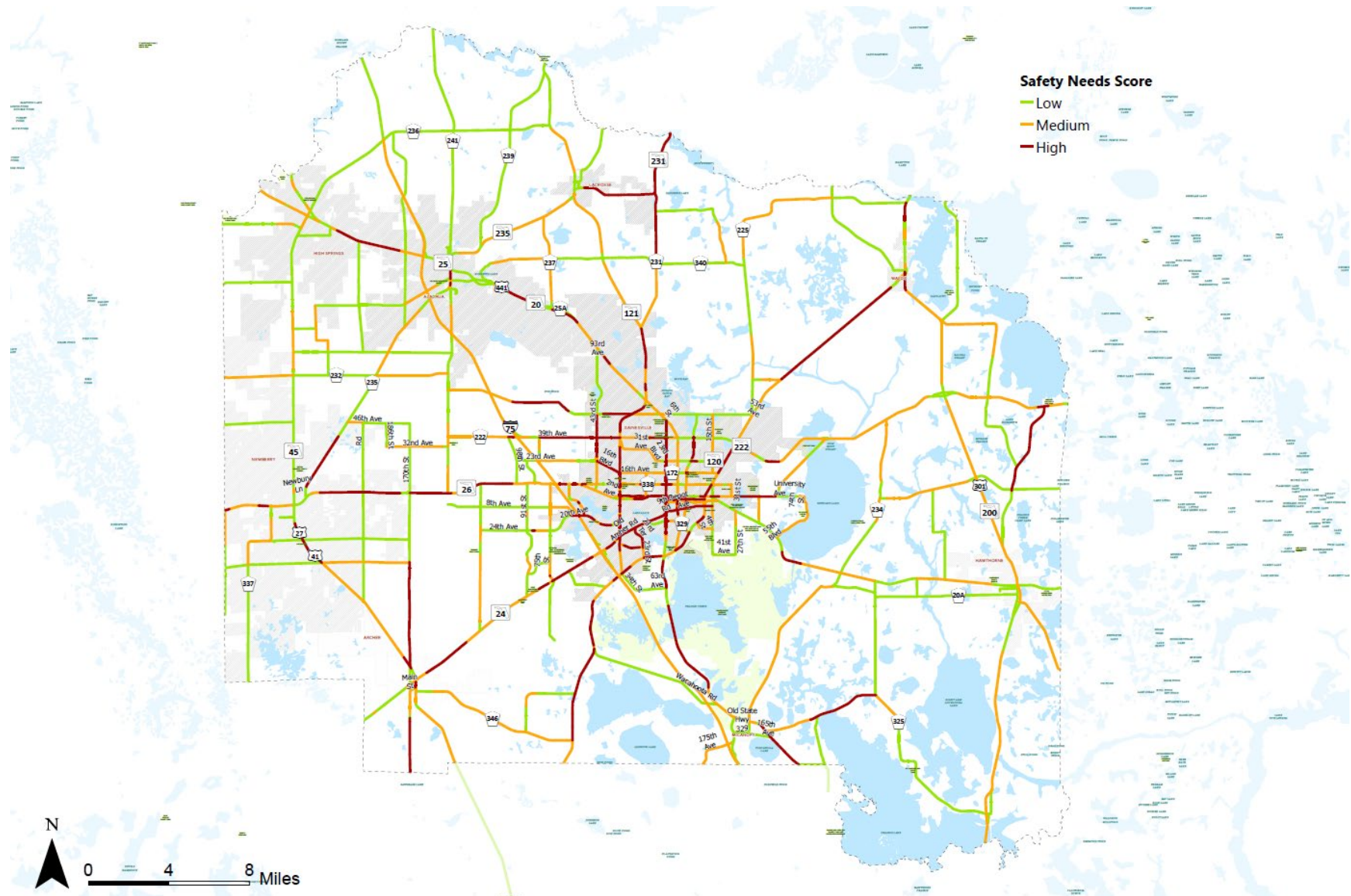
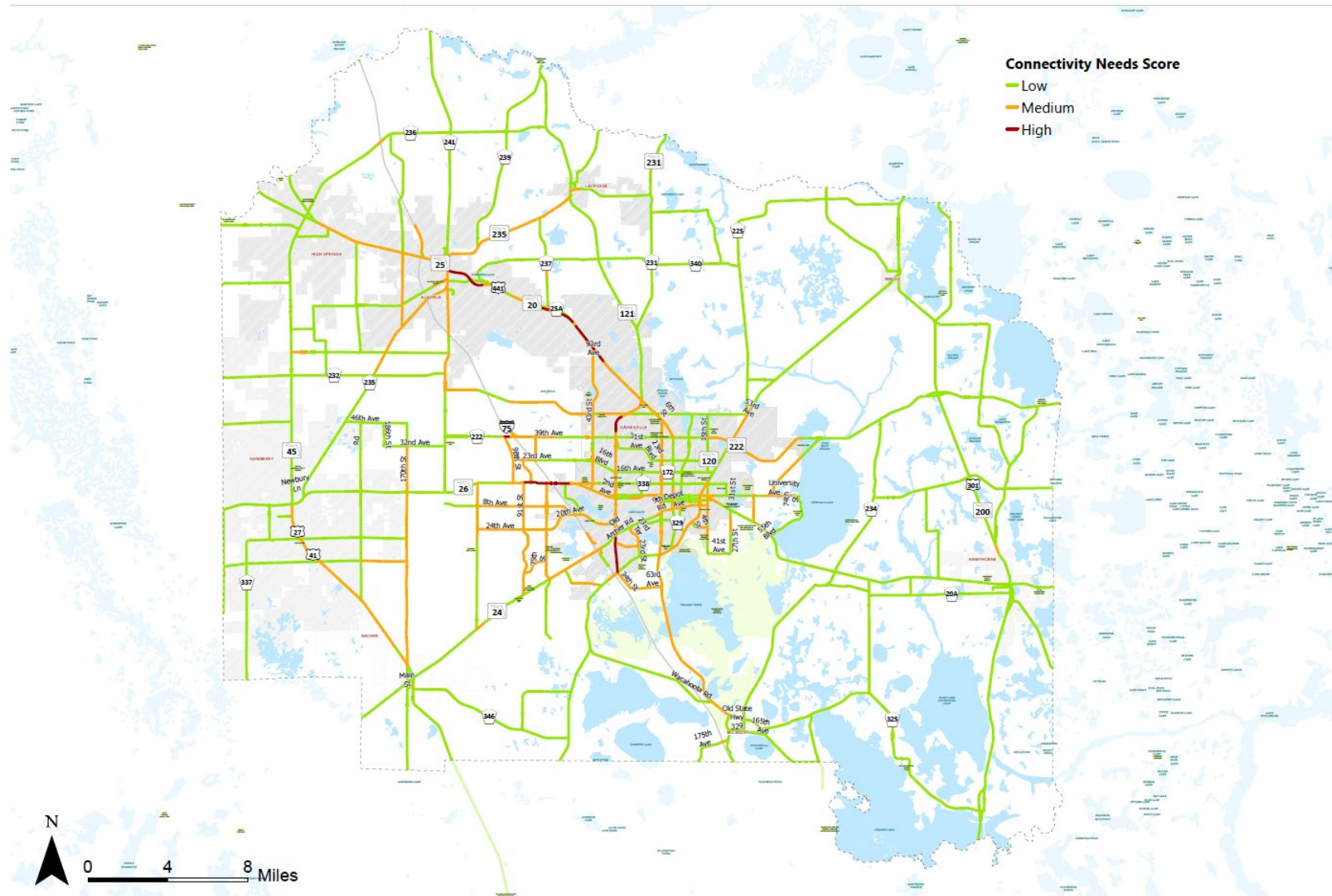
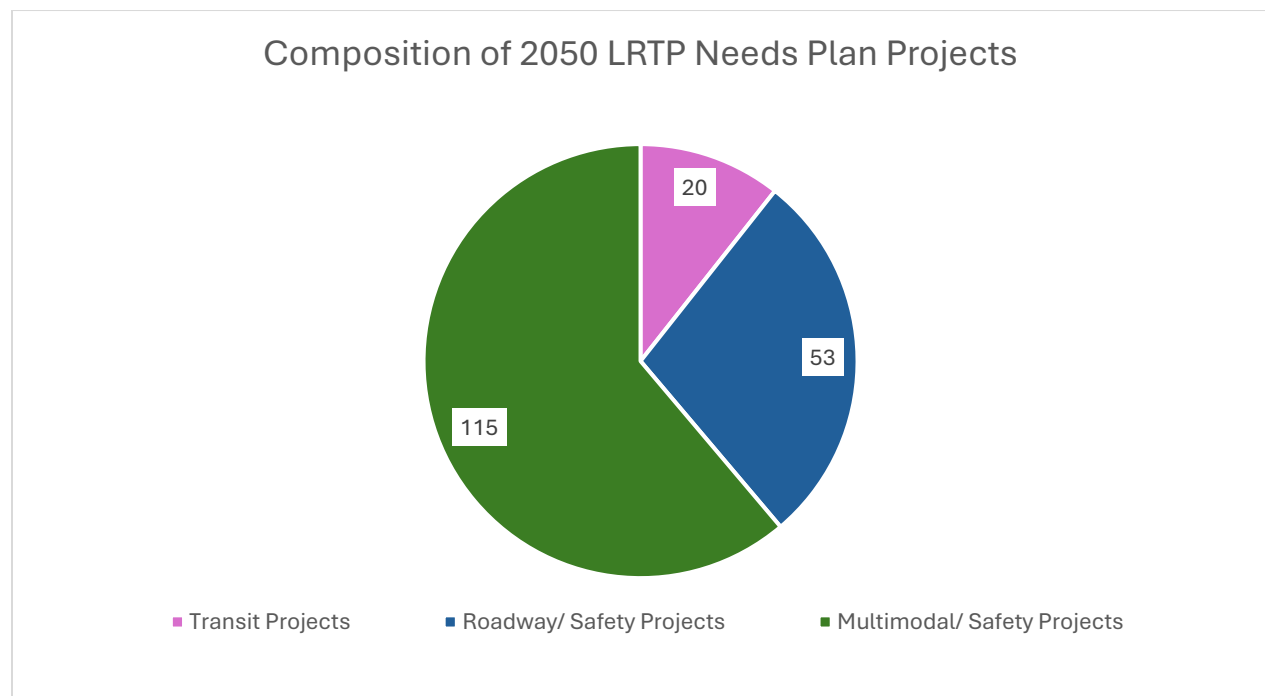


Figure 4: Connectivity Needs Score



The Needs Plan informs the development of the Cost Feasible Plan by identifying and prioritizing projects that represent the region’s most critical transportation needs. These prioritized needs serve as the foundation for determining which projects should be included in the Cost Feasible Plan. The resulting prioritized list of multimodal projects provides a framework for advancing future investments and funding strategies. It ensures that the Gainesville MTPO region can meet the evolving transportation demands of its communities while promoting a balanced, forward-looking transportation system. The 2050 LRTP Needs Plan projects list is comprised of three broad categories of proposed improvements. The composition of projects is shown in Figure 5. As depicted in the graphic below, majority of the projects include multimodal/safety improvements including higher emphasis to the bike/pedestrian and safety enhancements. The projects have been compiled in coordination with the City of Gainesville, Alachua County, and the University of Florida.

Figure 5: Projects Composition



The detailed list of projects and the corresponding maps of the needs plan are presented in Appendix A. For clarity, the projects lists and the corresponding maps are presented by project type (in Appendix tables A1, A2, A3, and Figures A1, A2, A3). In addition, an overlay of all of the proposed projects on the 2050 congested roadway network is presented in Appendix Figure A4. Furthermore, the 2050 roadway congested map is presented in Appendix Figure A5, that demonstrates the roadways that are moderately and severely congested. Overall, the 2050 LRTP Needs Plan addresses the region’s mobility, safety, multimodal and connectivity needs.

Appendix A

Table A1: Roadway/ Safety Projects

Project ID	Street	From	To	Type
1	I-75	Marion County Line	Santa Fe River	Widening
2	SW 20th Avenue (I-75 Overpass)	SW 61st Street	SW 34th Street	Widen Two (2) Lane to Four (4) Lane
3	NW 34th Street (SR 121)	NW 39th Ave (SR 222)	MLK Memorial Hwy (US 441)	Convert Two (2) Lane to Two (2) Lane Divided
4	NW 23rd Street (SR 121)	MLK Memorial Hwy (US 441)	CR 231	Widen Two (2) Lane to Four (4) Lane
5	NW 23rd Avenue	Fort Clarke Boulevard	NW 83rd Street	Widen to 4
6	SW Williston Road (SR 121)	SW 62nd Avenue	SW 73rd Avenue Extension (New Road)	Widen Two (2) Lane to Four (4) Lane
7	Archer Road/SR 24	SW 122nd Street	SW 91st Street	Widen to 4 Lane
8	NW 23rd Avenue	NW 98th Street	Fort Clarke Blvd	Widen to 4
9	SW Williston Road (SR 121)	SW 41st Boulevard (Fred Bear Drive)	SW 62nd Avenue	Widen Two (2) Lane to Four (4) Lane
10	SE 16th Avenue	S Main Street	SE Williston Road	Widen Two (2) Lane to Four (4) Lane
11	NW 23rd Avenue	NW 59th Terrace	NW 83rd Street	New Construction 3 lanes Complete Street/replace 2 lane rural section
12	NW 98th Street	Newberry Road (State Road 26)	NW 39th Avenue	New construction of 4 lanes/ replace a 2-lane rural section
13	SW 13th Street (US 441)	Williston Road (SR 331)	SW 16th Street	Safety Enhancement
14	SW 13th Street (US 441)	SW 16th Street	W University Avenue (SR 26)	Safety Enhancement
15	NW 13th Street (US 441)	NW 8th Avenue	NW 16th Avenue	Safety Enhancement
16	NW 13th Street (US 441)	NW 16th Avenue	NW 23rd Avenue	Safety Enhancement
17	NW 13th Street (US 441)	W University Boulevard (SR 26)	NW 8th Avenue	Safety Enhancement
18	NE 8th Avenue	NE 11th Street	North Main Street	Safety Enhancement
19	NE 8th Avenue	Waldo Road (SR 24)	NE 11th Street	Safety Enhancement
20	New Road	NW 39th Ave	NW 42nd Avenue (new road)	New Roads
21	SW 47th Avenue Extension (Phase 1 New Road) (Extension includes part of SW 29th Dr)	SE Williston Road (SR 331)	SW 34th Street (SR 121)	New Roads
22	New Road	Bledsoe Drive	Hull Road	New roadway from Bledsoe Dr to Hull Road with new intersection at SW 34th Street
23	Fletcher Drive	W University Avenue	Stadium Road	Conversion of Fletcher Dr to one way southbound with cycle track and Buckman Dr one way northbound with cycle track
24	NW 122nd Street	NW 8th Avenue	NW 20th Place	New Roads
25	NW 42nd Avenue (new road)	NW 39th Avenue	NW 86th Terrace	New Roads
26	New Road	SW Archer Road	SW 88th Street	New Roads
27	SW 44th Street	SW Archer Road	SW 49th Street (new road)	New Roads
28	SE 20th Street Extension (New Road)	Hawthorne Road (SR 20)	SE 8th Avenue	New Roads

Project ID	Street	From	To	Type
29	SE 15th Avenue Extension (New Road)	SE 15th Avenue (Existing Eastern Terminus)	SE 27th Avenue	New Roads
30	SW 35th Terrace Extension (New Road)	SW 35th Terrace (Existing Southern Terminus)	SW 47th Avenue	New Roads
31	SW 40th Boulevard Connector	SW 62nd Boulevard	SW 40th Boulevard (Existing Northern Terminus)	New Roads
32	SW 37th Street (New Road)	SW 39th Boulevard	SW 40th Boulevard	New Roads
33	SW 49th Street (New Road)	SW 51st Drive	SW 62nd Boulevard	New Roads
34	SW 55th Terrace Extension (New Road)	SW 57th Avenue	SW 62nd Ave	New Roads
35	SW 63rd Boulevard Extension (New Road)	SW 62nd Avenue	SW 73rd Avenue Extension (New Road)	New Roads
36	New roundabout at intersection of Hull Road and Mowry Road			New Roads
37	New Road	NW 39th Avenue	NW 33rd Avenue	New Roads
38	SW 91st Street	NW 39th Avenue	NW 42nd Avenue (new road)	Widen to 4
39	NW 15th Place to NW 76th Boulevard (New Road)	Fort Clarke Boulevard	W Newberry Road	New Roads with dedicated transit line
40	SE 10th Avenue Extension (New Road)	SE 7th Street Extension (New Road)	SE 4th Street	New Roads
41	SE 21st Street Extension (New Road)	Hawthorne Road (SR 20)	SE 8th Avenue	New Roads
42	SE 7th Street Extension (New Road)	SE Depot Avenue	SE 11th Place	New Roads
43	SW 47th Avenue Extension (Phase 2 New Road)	SW 47th Avenue Extension (Phase 1 New Road)	SW 40th Place (Existing Western Terminus)	New Roads
44	Hull Rd Extension (Phase 1)	Hull Road (Existing Western Terminus)	SW 20th Avenue	New Roads
45	SE 22nd Avenue Extension (New Road)	SE 21st Street Extension (New Road)	SE 15th Street	New Roads
46	SW 13th Rd Extension (New Road)	South Main Street	SW 6th Street	New Roads
47	SW 10th Avenue Extension (New Road)	South Main Street	SW 6th Street	New Roads
48	SW 57th Rd (New Road)	SW 63rd Boulevard	SW 75th Street	New Roads
49	SW 57th Avenue (New Road)	SW 49th Street (New Road)	SW 63rd Boulevard	New Roads
50	SW 73rd Avenue Extension (New Road)	Williston Road (SR 331)	SW 75th Street	New Roads
51	NW 23rd Avenue Extension (New Road)	NW 98 Street	NW 143rd Street	New Roads
52	NW 122nd Street	NW 33rd Avenue	NW 20th Place	New Roads
53	Hull Road	SW 20th Avenue	SW 43rd Street	New Roads

Table A2: Multimodal/ Safety Projects

Project ID	Street	From	To	Type
101	NW 34th Boulevard (SR 121)	NW 53rd Avenue	ML King Memorial Hwy (US 441)	Widen Sidewalk to 8'
102	Archer Road (SR 24)	SW 13th Street (US 441)	Interstate 75	Complete Street
103	SW 34th Street (SR 121)	Williston Road (SR 331)	SW 2nd Avenue (SR 26A)	Widen Sidewalk to 8'
104	Waldo Greenway Upgrade Phase 1	E University Avenue (SR 26)	NE 16th Avenue	Trail Upgrade
105	Archer Road/SR 24	SW 122nd Street	SW 75th Street	Buffered Bike Lane
106	NW 43rd Street	Newberry Road (SR 26)	NW 53rd Avenue	Widen Sidewalk to 8'
107	SW 34th Street (SR 121)	NW 16th Avenue	NW 53rd Avenue	Widen Sidewalk to 8'
108	Pine Ridge South Trail	NW 53rd Avenue	NW 45th Avenue	Multi-Use Trail
109	SW 2nd Avenue	S Main Street	SW 13th Street (US 441)	Protected Bike Lane
110	SW 20th Avenue	SW 61st Street	SW 52nd Street	Complete Street
111	6th Street Trail Extension	NW 39th Avenue (SR 222)	NW 13th Street (US 441)	Multi-Use Trail
112	Kermit Sigmon (Old Archer) Trail	SW 16th Street	SW 34th Street (SR 121)	Trail Upgrade
113	NW 13th Street (US 441)	NW 23rd Avenue (SR 120)	NW 6th Street (SR 20)	Widen Sidewalk to 8'
114	West University Avenue (SR 26)	SW 2nd Street	W 13th Street (US 441)	Complete Street
115	Williston Road (SR 331)	SE 2nd Avenue	SE 16th Avenue	Multi-Use Trail
116	East University Avenue (SR 26)	Fred Cone Park (NE 31st Street)	Waldo Road (SR 24)	Complete Street
117	SW 13th Street (US 441)	Archer Road (SR 24)	W University Avenue (SR 26)	Multi-Use Trail
118	SW 34th Street (SR 121)	NW 2nd Avenue (SR 26A)	W University Avenue (SR 26)	Multi-Use Trail
119	SW 35th Place	SW 23rd Street	SW 34th Street	Complete Street
120	Waldo Road/SR 24	Gainesville Regional Airport	US 301	Multi-Use Path
121	Newberry Road (SR 26)	NW 8th Avenue	NW 62nd Street	Widen Sidewalk to 8'
122	NW 34th Street (SR 121)	NW 8th Avenue	NW 16th Avenue	Widen Sidewalk to 8'
123	SW 13th Street (US 441)	NW 16th Avenue	NW 23rd Avenue (SR 120)	Widen Sidewalk to 8'
124	SW 6th Street	SW Depot Avenue	SW 16th Avenue	Complete Street Reconstruction
125	CR 219A	US 301	NE State Road 26	Multi-Use Path
126	SR 26	NE County Road 234	Quail Street	Multi-Use Path
127	Williston Road (SR 331)	SW 34th Street (SR 121)	SW 41st Boulevard (Fred Bear Dr)	Multi-Use Trail
128	Williston Road (SR 331)	Entrance to Sweetwater Wetlands Park	SW 13th Street (US 441)	Widen Sidewalk to 8'
129	E University/SR 26	NE 24th Street	E University Avenue	Multi-Use Path
130	Williston Road/SR 121	SW 41st Road	SW 34th Street	Multi-Use Path
131	Williston Road/SR 121	SW 85th Avenue	SW 62nd Avenue	Multi-Use Path
132	Newberry Road/SR 26	SW 170th Street	SW 143rd Street	Multi-Use Path
133	SW 63rd Boulevard	Archer Road (SR 24)	SW 41st Place	Multi-Use Trail
134	NW 8th Avenue	NW 34th Street (SR 121)	Newberry Road (SR 26)	Widen Sidewalk to 8'
135	SE 2nd Avenue & SE 11th Avenue	Depot Avenue Trail	E University Avenue (SR 26)	Multi-Use Trail
136	Hawthorne Road (SR 20)	SE 43rd Street	E University Avenue (SR 26)	Widen Sidewalk to 8'

Project ID	Street	From	To	Type
137	MLK Memorial Hwy (US 441)	NW 6th Street (SR 121)	Deerhaven Trail	Multi-Use Trail
138	N 53rd Avenue	NE 15th Street	ML King Memorial Highway (US 441)	Multi-Use Trail
139	Newberry Road (SR 26)	NW 43rd Street	NW 8th Avenue	Widen Sidewalk to 8'
140	NW 53rd Avenue	NW 13th St (US 441)	NW 34th Boulevard / SR 121	Multi-Use Trail
141	NW 6th Street (SR 20)	NW 8th Avenue	NW 13th Street (US 441)	Complete Streets Study
142	S Main Street	SE 16th Avenue	Williston Road (SR 311)	Widen Sidewalk to 8'
143	SE 9th Street	SE 7th Avenue	SE 12th Avenue	Sidewalk Priority
144	NE 15th Street	NE 53rd Avenue	NE 31st Avenue	Multi-Use Trail
145	Waldo Greenway Extension	NE 47th Avenue	Northern City Limits	Multi-Use Trail
146	SW 20th Avenue	NW 83rd Street	NW 51st Street	Multi-Use Path
147	Glen Springs Braid Trail	NW 16th Ter	NW 34th Street	Multi-Use Trail
148	N 23rd Avenue (SR 120)	Waldo Road (SR 24)	NW 13th Street (US 441)	Widen Sidewalk to 8'
149	N Main Street (gap)	N 16th Avenue	N 1800 block	Sidewalk Priority
150	NW 16th Avenue	6th Street Trail	NW 13th Street (US 441)	Widen Sidewalk to 8'
151	NW 16th Avenue Trail	N Main Street	6th Street Trail	Multi-Use Trail
152	NW 23rd Boulevard	NW 22nd Street	Gaineswood Entrance	Sidewalk Priority
153	NE 25th Street	NE 8th Avenue	E University Avenue (SR 26)	Buffered or Protected Bike Lane
154	NE 39th Avenue (SR 222)	Regional Juvenile Detention Center	NW 43rd Street	Widen Sidewalk to 8'
155	SE 43rd Street	E University Avenue (SR 26)	SE Hawthorne Road (SR 20)	Multi-Use Trail
156	CR 234	US 441	NE State Road 26	Multi-Use Path
157	US 301	SE 71st Avenue	SE County Road 219A	Multi-Use Path
158	NW 143rd Street	NW 39th Avenue	Millhopper Road	Multi-Use Path
159	SW 24th Avenue	I-75 overpass	SW 75th Street (Tower Road)	Multi-Use Trail
160	NW 8th Avenue	NW 18th Ter	NW 23rd Street	Multi-Use Trail
161	SW 2nd Avenue (SR 26A)	W University Avenue (SR 26)	SW 23rd Street	Widen Sidewalk to 8'
162	SW 34th Street (SR 121)	W University Avenue (SR 26)	NW 8th Avenue	Widen Sidewalk to 8'
163	NE 3rd Avenue	NE 25th Street	NE Waldo Road	Bike Boulevard
164	SE 13th Avenue	SE 15th Street	Williston Road (SR 331)	Multi-Use Trail
165	W University Avenue /(SR 26)	NW 13th Street (US 441)	NW 20th Street	Complete Street
166	SW 4th Avenue	Williston Road (SR 331)	SW 13th Street (US 441)	One-Way Multimodal Pair
167	SW 62nd Avenue	Williston Road (SR 331)	Archer Road (SR 24)	Multi-Use Trail
168	Deerhaven Trail (SR 121)	NW 128th Ln	SR 121 @ CR 231 SPLIT	Multi-Use Trail
169	SW 40th Boulevard	Archer Road	Existing trail	Multi-Use Trail
170	Williston Road (SR 331)	SW 41st Boulevard (Fred Bear Dr)	SW 62nd Boulevard	Widen Sidewalk to 8'
171	E University Avenue (SR 26)	SE 43rd Street	SE 31st Street	Multi-Use Trail
172	NE 15th Street	NE 8th Avenue	E University Avenue / SR 26	Buffered or Protected Bike Lane
173	SE 3rd Avenue	Hawthorne Road (SR 20)	SE 11th Street (SR 331)	Buffered or Protected Bike Lane
174	SW 40th Boulevard	SW 30th Avenue	Archer Road (SR 24)	Sidewalk Priority

Project ID	Street	From	To	Type
175	NW 43rd Street	NW 53rd Avenue	NW 43rd Way	Multi-Use Trail
176	Hawthorne Road/SR 20	SE 8th Avenue	Lake Shore Drive	Multi-Use Path
177	NW 43rd Street	NW 73rd Avenue	ML King Memorial Hwy (US 441)	Multi-Use Trail
178	SE 7th Avenue	SE 15th Street	SE 11th Street (SR 331)	Bike Lane
179	SW 4th Avenue	SW 3rd Street	SW 5th Street	Sidewalk Priority
180	NE 9th Street	NE 31st Avenue	NE 23rd Avenue	Bike Boulevard
181	SW 75th Street	SW 75th Way	SW 73rd Avenue	Multi-Use Path
182	SE 22nd Avenue / SE 4th Street	SE 15th Street	Williston Road (SR 331)	Widen Sidewalk to 8'
183	NW 22nd Street	NW 8th Avenue	NW 16th Avenue	Sidewalk Priority
184	NW 23rd Avenue Trail (NW 34th to Glen Springs Connection)	NW 23rd Avenue	NW 23rd Ter	Multi-Use Trail
185	NE 53rd Avenue	Waldo Road (SR 24)	ML King Memorial Hwy (US 441)	Multi-Use Trail
186	NE 16th Avenue	NE 12th Street	North Main Street	Upgrade to Two (2) Lane Urban Section Road/ Complete street
190	New road (between NW 88th Street and NW 84th Ter)	Millhopper Road	New Road Project 191	Bike Lane
191	New road (half loop between NW 42nd Ave and Millhopper Rd)	NW 39th Avenue @ NW 83rd Street	NW 39th Avenue @ NW 98th Street	Bike Lane
192	NW 83rd Street	NW 39th Avenue	NW 23rd Avenue	Bike Lane
193	NW 39th Avenue	NW 143rd Street	I-75	Bike Lane
194	Extension of 23rd Avenue	NW 143rd Street	NW 55th Terrace	Bike Lane
195	NW 143rd Street and SW 8th Avenue	SW 122nd Street @ SW 8th Avenue	NW 39 Ave	Bike Lane
196	Extension of NW 122nd Street	W Newberry Road	NW 39th Avenue	Bike Lane
197	NW 89th Street	W Newberry Road	NW 23rd Avenue	Bike Lane
198	Fort Clarke Boulevard	W Newberry Road	NW 23rd Avenue	Bike Lane
199	SW 122nd Street	W Newberry Road	Diamond Sports Park	Bike Lane
200	NW 91st Street	W Newberry Road	SW 46th Boulevard	Bike Lane
201	W Newberry Road	NW 120th Street	NW 75th Street	Bike Lane
202	SW 8th Avenue	SW 75th Street	SW 20th Avenue	Bike Lane
203	SW 20th Avenue and SW 24th Avenue	SW 34th Street (SR 121)	SW 91st Street	Bike Lane
204	SW 41st Place and Extension	SW 71st Terrace	Lake Kanapaha	Bike Lane
205	SW Archer Road	SW 75th Street	SW 45th Street	Bike Lane
206	SW 75th Street	SW 41st Place	SW 57th Road	Bike Lane
207	SW 88th Street & SW 73rd Avenue & SW 85th Dr	SW 77th Avenue	SW Archer Road	Bike Lane
208	New Road between SW 24th Ave and Windmeadows Blvd	SW 34th Street (SR 121)	Clark Butler Boulevard	Bike Lane
209	E University Avenue (SR 26)	NE 15th Street	NE 55th Boulevard	Bike Lane
210	NE 27th Avenue	NE 39th Boulevard	NE 55th Boulevard	Bike Lane
211	SE 27th Street and SE 41st Avenue	SE Hawthorne Road	SE 15th Street	Multi-Use Trail
212	SE 15th Street	E University Avenue (SR 26)	SE 22nd Avenue	Bike Lane
213	SE 15th Street and the Extension to SE 16th Ave (new road)	SE 22nd Avenue	SE Williston Road	Bike Lane
214	Fred Bear Trail	SW Archer Road	SW Williston Road	Multi-Use Trail
215	Sweetwater Trail	NW 3rd Street	SW Archer Road	Multi-Use Trail

Project ID	Street	From	To	Type
216	Depot Trail	E University Avenue	SE 7th Street	Multi-Use Trail
217	SW 5th Ave	Williston Road (SR 331)	SW 13th Street	One-Way Multimodal Pair
218	Eastside Loop Trail	NE 15th Street	SE 15th Street	Multi-Use Trail

Table A3: Transit Projects

Project ID	Street	From	To	Type
301	Newberry/ Jonesville Express			Express Transit
302	To Eastside Activity Center			Express Transit
303	SW 75 Street	SW Archer Road	W Newberry Road	Shared Transit Line
304	SW 45 Street	SW Archer Road	South of SW 36th Road	Dedicated Transit Line
305	Santa Fe/ Tower Express			Express Transit
306	NE WALDO Road	Gainesville Regional Airport	NE 63rd Avenue	Dedicated Transit Line
307	SW 91 Street	SW Archer Road	SW 46th Boulevard	Dedicated Transit Line
308	Haile Plantation Express			Express Transit
309	Santa Fe/ Tower Express			Express Transit
310	SW Archer Road	SW 91st Terrace	SW 45th Street	Dedicated Transit Line
311	Fort Clarke Boulevard	Newberry Road (State Road 26)	NW 23rd Avenue	Dedicated Transit Line
312	Haile Plantation Express			Express Transit
313	NW 23 Avenue	Fort Clark Boulevard	NW 83rd Street	Shared Transit Line
314	SE HAWTHORNE Road	SE 43rd Street	SE 27th Street	Dedicated Transit Line
315	W Newberry Road	NW 143rd Street	I-75	Dedicated Transit Line
316	NW 122 Street	W University Avenue	NW 17th Avenue	Dedicated Transit Line
317	SW 122 Street	SW 31st Avenue	W University Avenue	Dedicated Transit Line
318	NW 83 Street	NW 23rd Avenue	NW 39th Avenue	Dedicated Transit Line
319	SE 43 Street	SE Hawthorne Road	SE 11th Place	Dedicated Transit Line
320	SW 62nd Boulevard	Newberry Road (State Road 26)	SW 20th Avenue	Bus Rapid Transit lanes

Figure A1: Roadway/Safety Projects

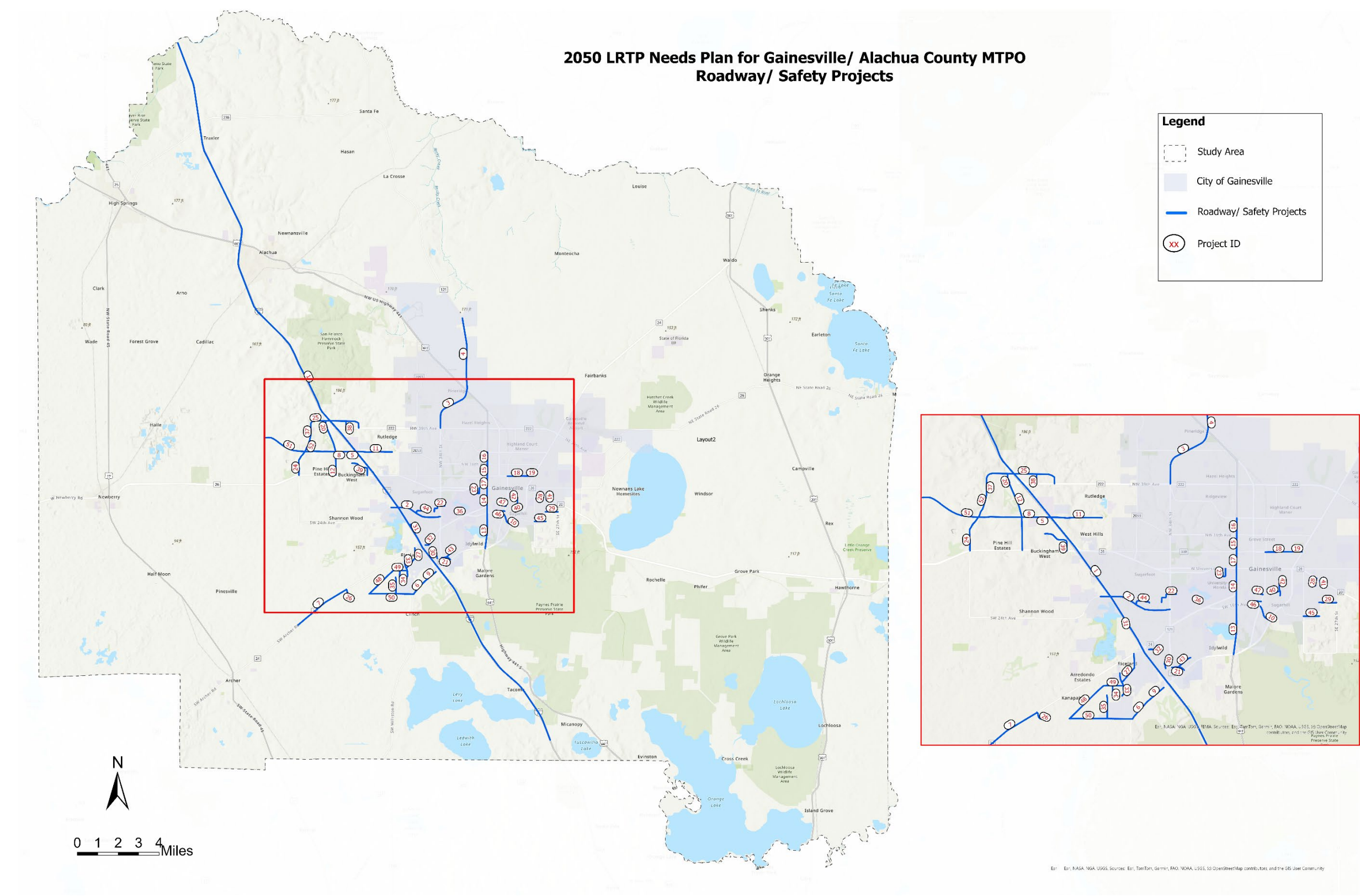


Figure A2: Multimodal/ Safety Projects

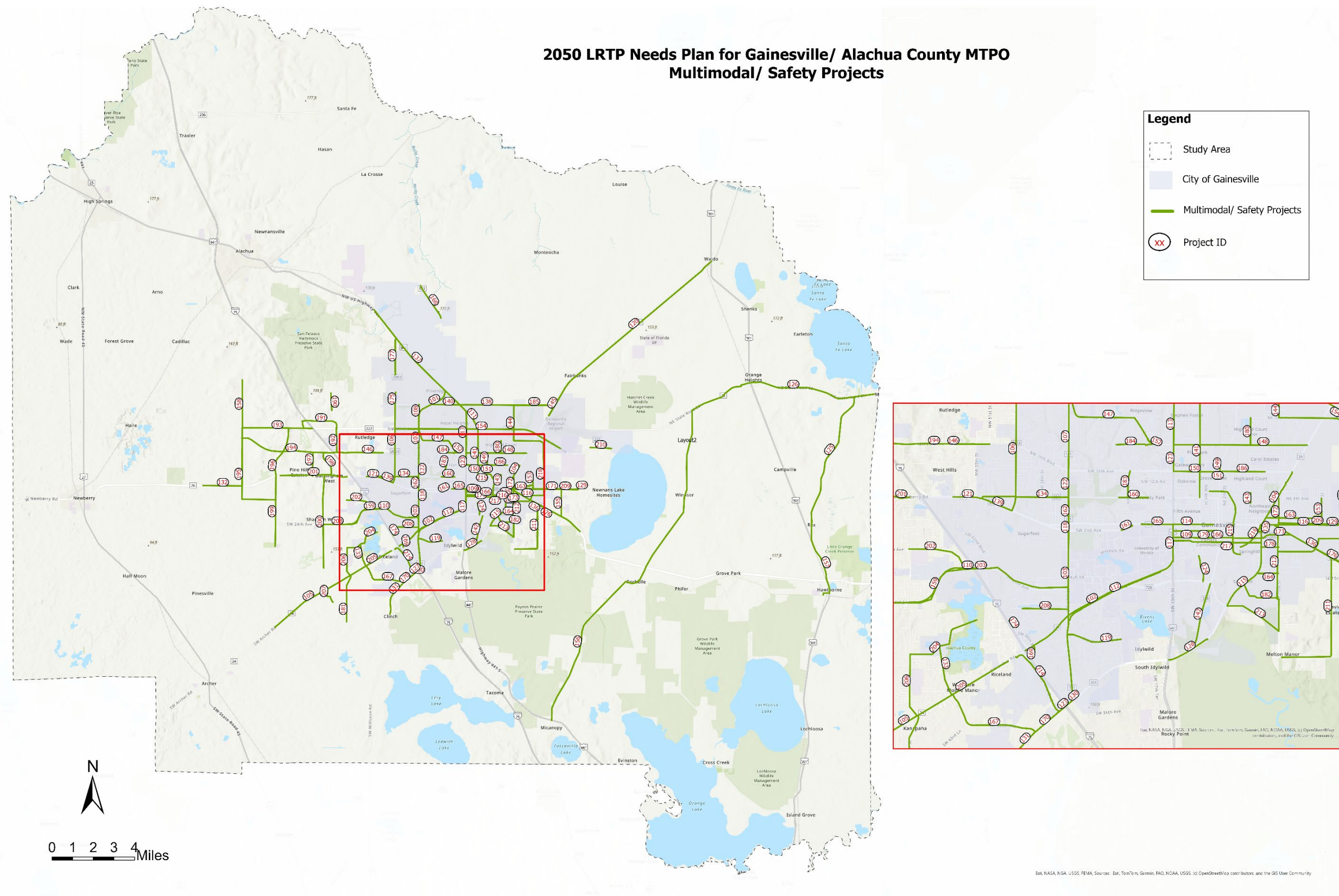


Figure A3: Transit Projects

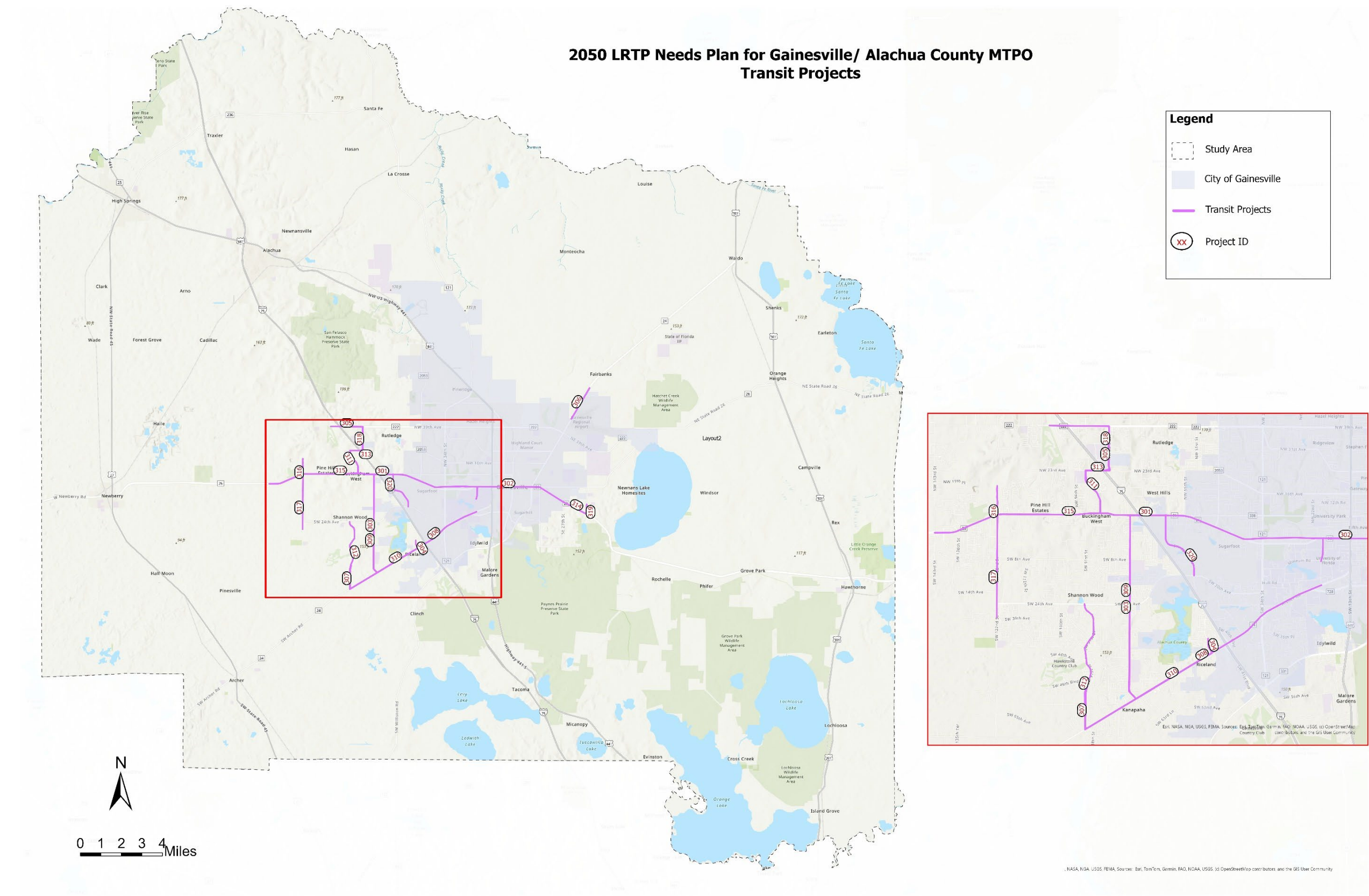


Figure A4: 2050 LRTP Needs Plan Projects Overlaid on Congested Roadway Network

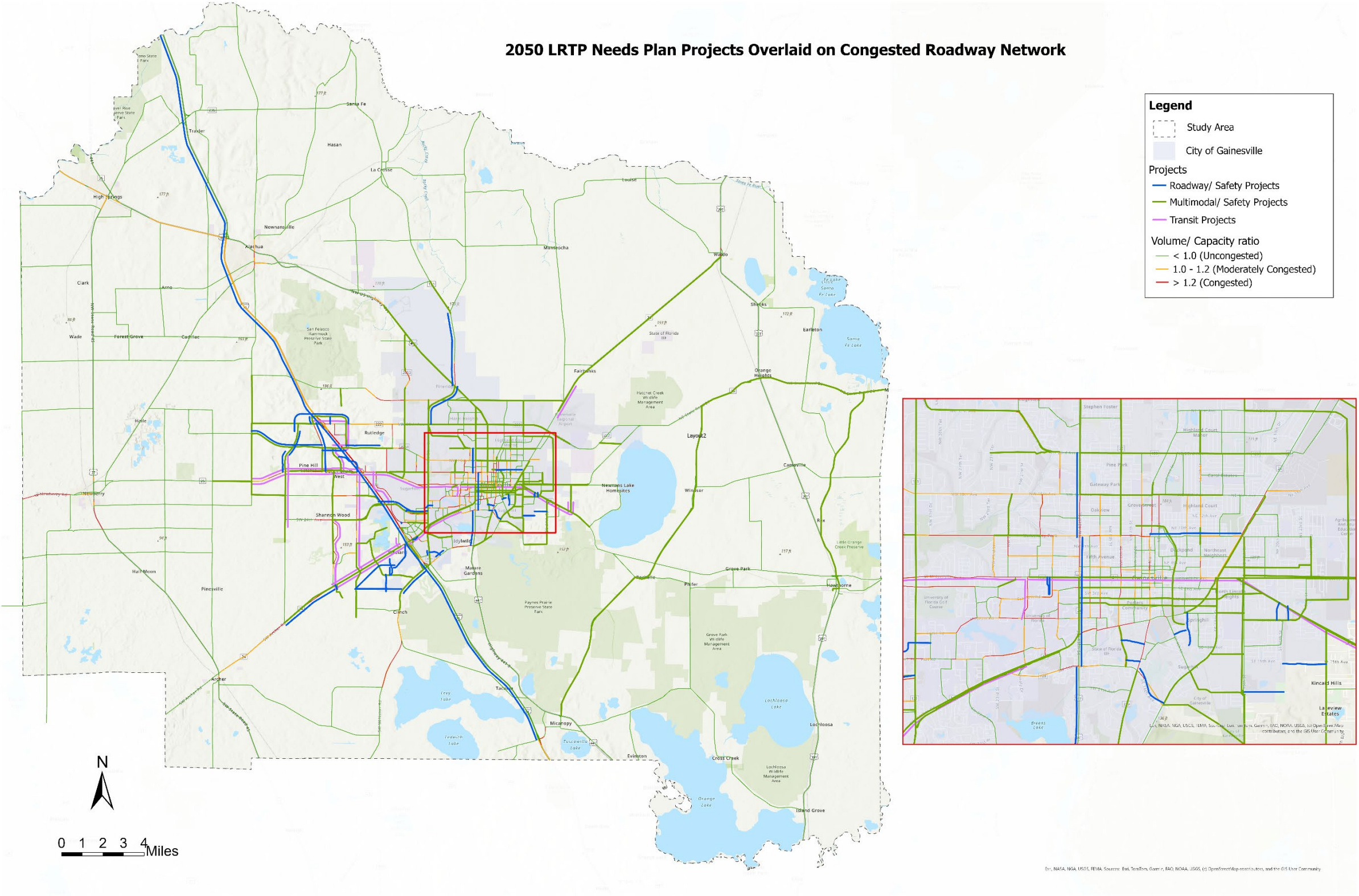


Figure A5: Gainesville/ Alachua County Existing plus Committed Roadway Network - Future Congestion Analysis (Travel Demand Model Volume/ Capacity)

