



## **VII. Action Item C**



# Metropolitan Transportation Planning Organization

## For the Gainesville and Alachua County Area

June 2, 2025

### MEETING MEMORANDUM

To: Metropolitan Transportation  
Planning Organization

---

From: Brad Thoburn

---

Subject: **GMTPO SU Funding Plan**

### **RECOMMENDATION**

**It is recommended that the Metropolitan Transportation Planning Organization Board approve the GMTPO SU Funding Plan.**

### **BACKGROUND**

The Metropolitan Transportation Planning Organization for Gainesville and Alachua County Area (GMTPO) prioritizes project funding for surface transportation projects. The proposed SU Funding Plan includes three new projects. The SU Funding Plan has been provided for review and approval.

The SU Funding Plan is attached.

Attachments

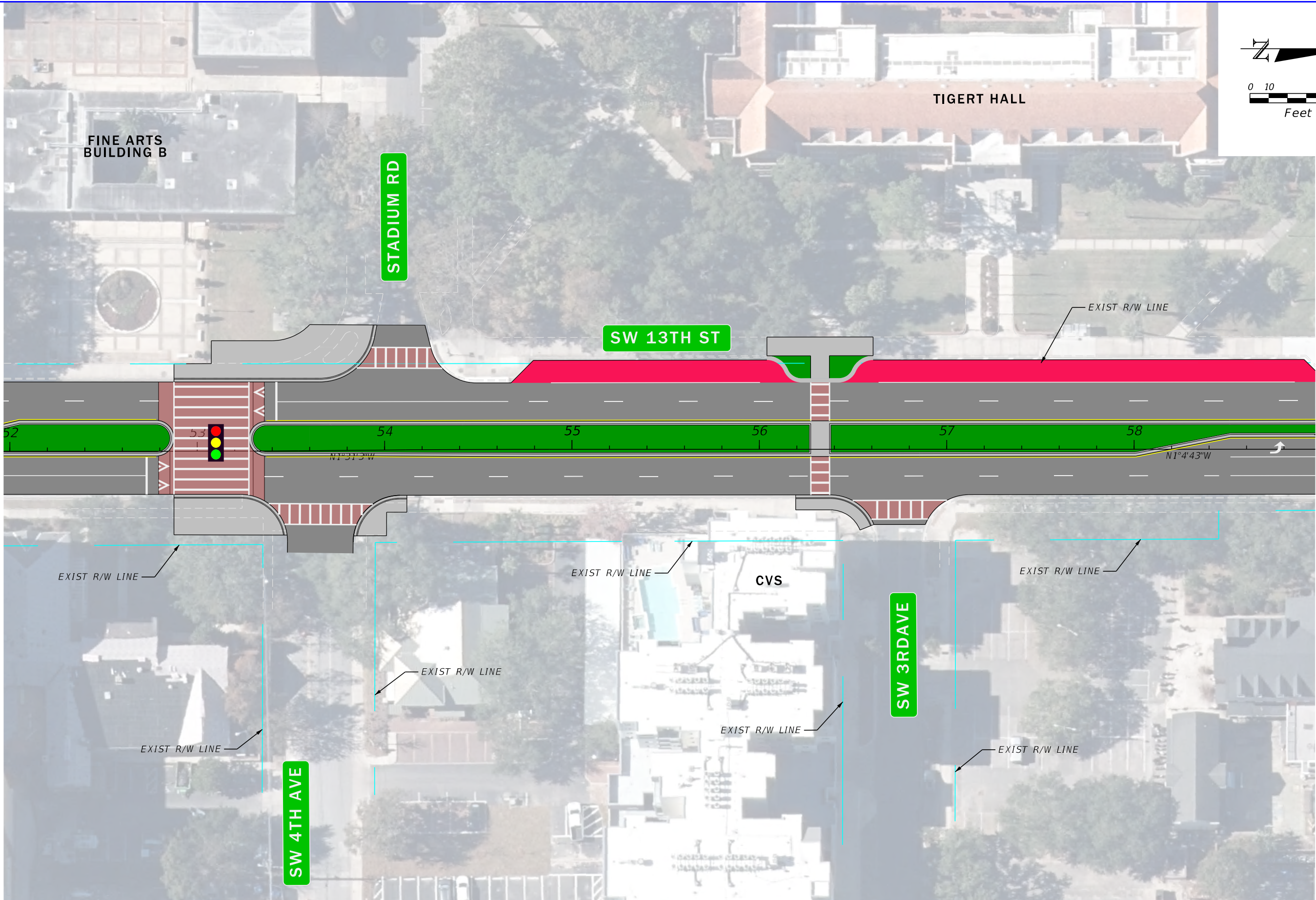
## Gainesville MTPO SU Funding Plan

5/1/2025

SU Funded Projects	Project Number	Funded Thru Phase	Project Description
SR 26 from NW 34th St to SE 31st Street	215599-4	Design FY 24/25	Complete Streets
SR 24 from NE 3 <sup>rd</sup> Ave to SR 222 (NE 39th Ave)	427326-5	CST FY 24/25	Intersection Improvement
US 441 from Archer Rd to Museum Rd	435891-3	CST FY 25/26	Intersection/Multiuse Path
SR 26 from NW 43rd Street to SW 38th Street	441046-2	CST FY 28/29	Add Bike Lanes
SR 26 from SW 38 <sup>th</sup> Street to Gale Lemerand Dr (Priority #4)	207817-5	CST FY 26/27	Ped Upgrades added to Resurfacing
NW 143rd Street from Newberry Rd to NW 39 <sup>th</sup> Avenue (Priority #6)		PD&E FY 26/27	Construct a Multiuse path
US 441 at Stadium Rd (Priority #5)		Design FY 27/28 CST FY 29/30	Ped Intersection Modification

Red = New Project

1/30/2025 6:41:54 PM williamson P:\ORD\_FDOT\WorkSets\FDOT\SR 25 W 13th Street\Roadway\PLAN\RD01 V7-1.dgn

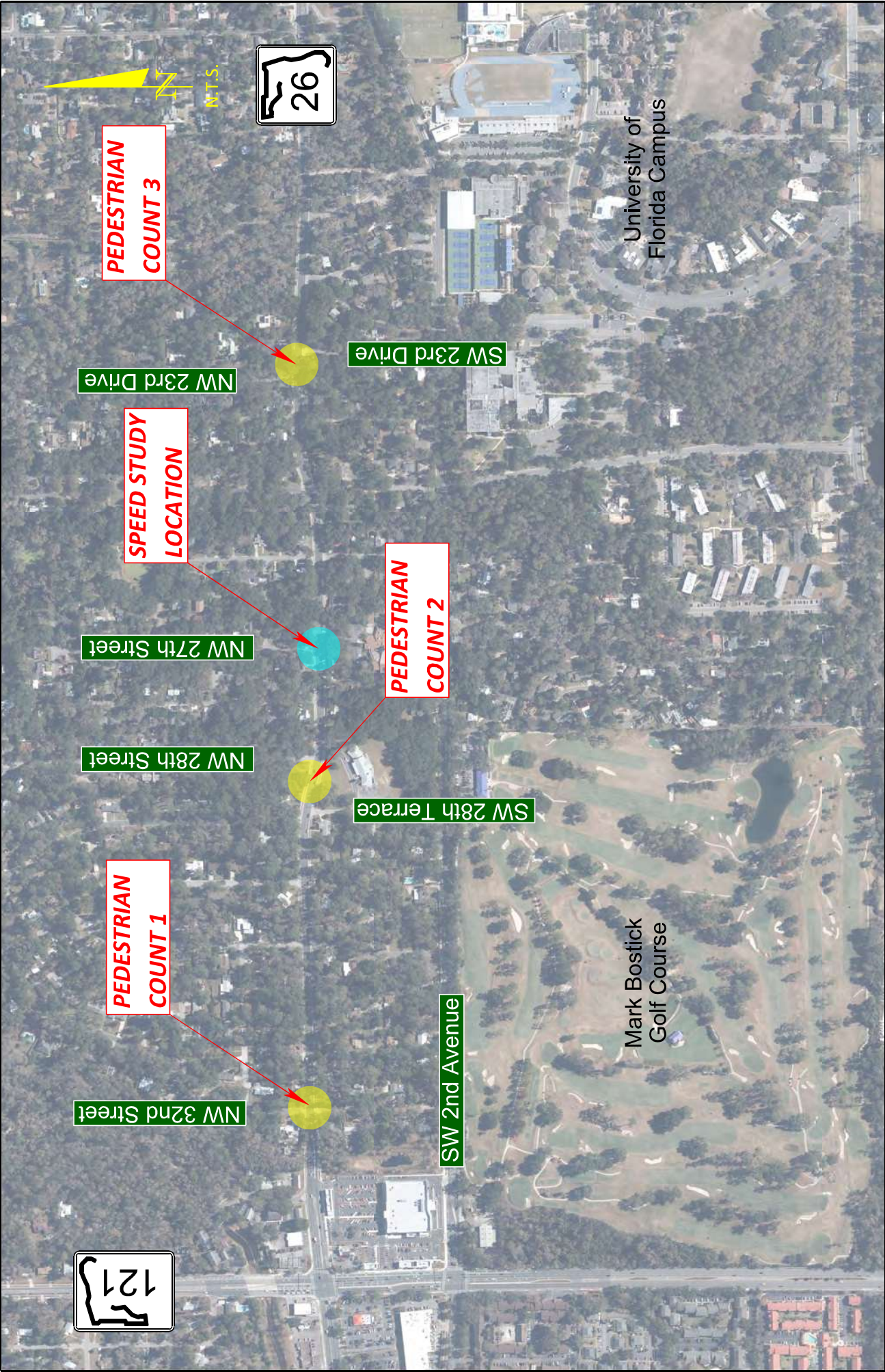


REVISIONS				ENGINEER OF RECORD	STATE OF FLORIDA DEPARTMENT OF TRANSPORTATION			SHEET NO.
DATE	DESCRIPTION	DATE	DESCRIPTION		ROAD NO.	COUNTY	FINANCIAL PROJECT ID	
					SR 35	ALACHUA		
				RYAN J. WILLIAMSON LICENSE NUMBER: 81421 BURGESS & NIPLE, INC. 1800 PEMBROOK DRIVE, SUITE 265 ORLANDO, FLORIDA 32810				

CONCEPT PLAN (7)

THE OFFICIAL RECORD OF THIS SHEET IS THE ELECTRONIC FILE DIGITALLY SIGNED AND SEALED UNDER RULE 61G15-23.004, F.A.C.





SR 26 IN GAINESVILLE  
PEDESTRIAN CROSSING EVALUATIONS

PROJECT LOCATION MAP  
ALACHUA COUNTY, FLORIDA

FIGURE 1