



VII. Action Item B



Metropolitan Transportation Planning Organization

For the Gainesville and Alachua County Area

May 21, 2025

MEETING MEMORANDUM

To: Technical Advisory Committee/
Citizens Advisory Committee

From: Brad Thoburn

Subject: **Long Range Transportation Plan – Needs Plan**

RECOMMENDATION

It is recommended that the Technical Advisory Committee and the Citizens Advisory Committee review and approve the Long Range Transportation Plan (LRTP) Needs Plan.

BACKGROUND

The Metropolitan Transportation Planning Organization for Gainesville and Alachua County Area (GMTPO) is currently updating the 2050 Long Range Transportation Plan. The Needs Plan is a critical component of the LRTP, guiding the identification and evaluation of multimodal transportation needs across the regional roadway network. It is used to develop the cost feasible plan. The Needs Plan will be presented to the Metropolitan Transportation Planning Organization Board for approval on June 2, 2025.

The LRTP Needs Plan Executive Summary is attached.

Attachment



2050 Long Range Transportation Needs Plan Executive Summary

May 2025

2050 Long Range Transportation Plan

Needs Plan- Executive Summary

The Needs Plan serves as a critical component of the 2050 Gainesville Metropolitan Transportation Planning Organization (MTPO) Long Range Transportation Plan (LRTP), guiding the identification and evaluation of multimodal transportation needs across the regional roadway network. The evaluation of needs was conducted based on the following goals and objectives of the LRTP (Table 1):

Table 1: 2050 LRTP Goals & Objectives

Goal	Objective
1. Support economic vitality	Improve mobility in high growth areas
	Improve mobility on heavy truck routes
2. Increase safety and security for motorized and non-motorized users	Reduce fatal & severe injury crashes
	Reduce fatal & severe injury crashes
	Maintain mobility on evacuation routes
	Improve safety for vulnerable road users
3. Increase accessibility and of people and freight	Improve multimodal access to public transit
	Improve bicycle and pedestrian
	Improve directness of freight hub connection
4. Protect environment	Limit impacts to natural resources like parks
	Limit impacts to historic and cultural
5. Enhance integration and connectivity of transportation systems across different modes	Fill gaps in sidewalk network
	Fill gaps in trail and bike lane network
	Improve transit service to major activity
	Improve transit service in transportation
	Improve roadway network connectivity
6. Promote efficient system management/operations	Increase use of technological and/or operational strategies
	Improve travel time reliability
7. Emphasize the preservation of the existing	Address pavement in poor condition

The evaluation process utilized a comprehensive, data-driven methodology to assess transportation system performance and to identify gaps and future demand. Multimodal needs were analyzed through the lens of anticipated population and employment growth, travel demand forecasts, safety evaluation and multimodal facilities. The plan integrates the needs of all users—motorists, pedestrians, bicyclists, micromobility users, transit riders, and freight traffic.

Table 2 shows the corresponding performance measures for each goal and objective, as well as the scoring scheme:

Table 2: Needs Evaluation Performance Measures

Goal	Objective	Criteria/Performance Measure
1. Support economic vitality	Improve mobility in high growth areas	0-2050 E+C V/C is less than 1 in high growth areas
		1-2050 E+C V/C is more than 1 in high growth areas
	Improve mobility on heavy truck routes	0-2050 E+C V/C is less than 1 on freight roadways
		1-2050 E+C V/C is more than 1 on freight roadways
2. Increase safety and security for motorized and non-motorized users	Reduce fatal & severe injury crashes	0-not on High Injury Network (HIN)
		0.5-not on Alachua HIN but on GNV High Risk Network (HRN)
		1-on High Injury Network
	Reduce fatal & severe injury crashes involving vulnerable users	0-not on vulnerable user HIN network
		1-on vulnerable user HIN network
	Maintain mobility on evacuation routes	0-2050 E+C LOS D or better on evacuation route
		1-2050 E+C LOS E or F on evacuation route
	Improve safety for vulnerable road users	0-without high vulnerable road users demand
		1-with high vulnerable road users demand
3. Increase accessibility and of people and freight	Improve multimodal access to public transit	0-sidewalk/bike lane w/in ½ mile of transit
		1-no sidewalk/bike lane w/in ½ mile of transit**
	Improve bicycle and pedestrian infrastructure in transportation disadvantaged areas	0-sidewalk/bike lane in TD area
		1-no sidewalk/bike lane in TD area**
	Improve directness of freight hub connection	0-with direct connection to freight hub
		1-without direct connection to freight hub
4. Protect environment*	Limit impacts to natural resources like parks and preservation areas	0-roadway capacity improvement in or near environmentally sensitive area
		1-not in or near environmentally sensitive area or operational improvement
	Limit impacts to historic and cultural resources	0- capacity improvement in or near historic/cultural resources
		1-not in or near historic/cultural resources or operational improvement

Goal	Objective	Criteria/Performance Measure
5. Enhance integration and connectivity of transportation systems across different modes	Fill gaps in sidewalk network	0-existing sidewalk
		1-no existing sidewalk**
	Fill gaps in trail and bike lane network	0-separated/buffered bike lane or path
		0.5-existing shoulder or bike lane***
		1-no existing bike lane or shoulder**
	Improve transit service to major activity centers	0-high level of transit service on major facilities accessing the activity centers
		1-low level of transit service on major facilities accessing the activity centers
	Improve transit service in transportation disadvantaged areas	0-high level of transit service in transportation disadvantaged areas
		1-low level of transit service in**
	Improve roadway network connectivity around activity centers	0 – low circuitry ratio
		1 – high circuitry ratio
6. Promote efficient system management/operations	Increase use of technological and/or operational strategies*	0-capacity improvement
		1-operational improvement
	Improve travel time reliability	0-on reliable roadways
		1-on unreliable roadways
7. Emphasize the preservation of the existing transportation system*	Address pavement in poor condition	0-on roads with good pavement condition
		1-on roads with poor pavement condition

*Objectives for project prioritization only.

**Roadways outside of the urban area boundary get half the points, roadways within urban area boundary but outside of the urban core and UF context area gets 0.75 points.

***Roadways outside of the urban area boundary get 0.125 points, roadways within urban area boundary but outside of the urban core and UF context area gets 0.25 points.

In addition to evaluating system performance, the data-driven Needs Plan process was also used to prioritize projects sourced from local and regional partners, including Alachua County, the City of Gainesville, the University of Florida, and the adopted projects from the 2045 L RTP.

The application of performance measures was completed in a disaggregate manner that grouped the objectives into four needs types categories to better specify what types of gaps, or needs, are present on the roadway network. The needs types include:

- Mobility
 - Evaluated with mobility objectives in goal 1.
 - Proposed projects related to improving mobility are prioritized with performance measures included in this type.
- Multimodal
 - Evaluated with objectives related to active transportation facilities, such as bike lanes, sidewalks and transit services.
 - Proposed projects aiming to improve the connection of active transportation facilities are prioritized with performance measures included in this type.
- Safety
 - Evaluated with the safety objectives in goal 2.
 - Proposed projects aiming to improve safety are prioritized with performance measures included in this type.
- Connectivity.
 - Evaluated with objectives related to roadway connectivity around activity centers and freight hubs.
 - Proposed projects related to adding new roadways or extending roadways are prioritized with performance measures included in this type.

Each proposed project was scored and prioritized based on its alignment with the objectives and the type of needs it addresses. Table 3 shows the needs type and the corresponding objectives.

Table 3: Needs Type

Needs Type	Objectives
Mobility (Goal 1)	Improve mobility in high growth areas
	Improve mobility on heavy truck routes
Multimodal (Goals 3 and 5, includes objectives related to multimodal)	Improve multimodal access to public transit
	Improve bicycle and pedestrian infrastructure in transportation disadvantaged areas
	Fill gaps in sidewalk network
	Fill gaps in trail and bike lane network
	Improve transit service to major activity centers
	Improve transit service in transportation disadvantaged areas
Safety (Goal 2)	Reduce fatal & severe injury crashes
	Reduce fatal & severe injury crashes involving vulnerable users
	Maintain mobility on evacuation routes
	Improve safety for vulnerable road users
Connectivity (Goals 3 and 5 connectivity and accessibility objectives)	Improve roadway network connectivity around activity centers
	Improve directness of freight hub connection

The needs evaluations are mapped by the four needs types. Figure 1 to Figure 4 illustrate the results.

Figure 1: Mobility Needs Score

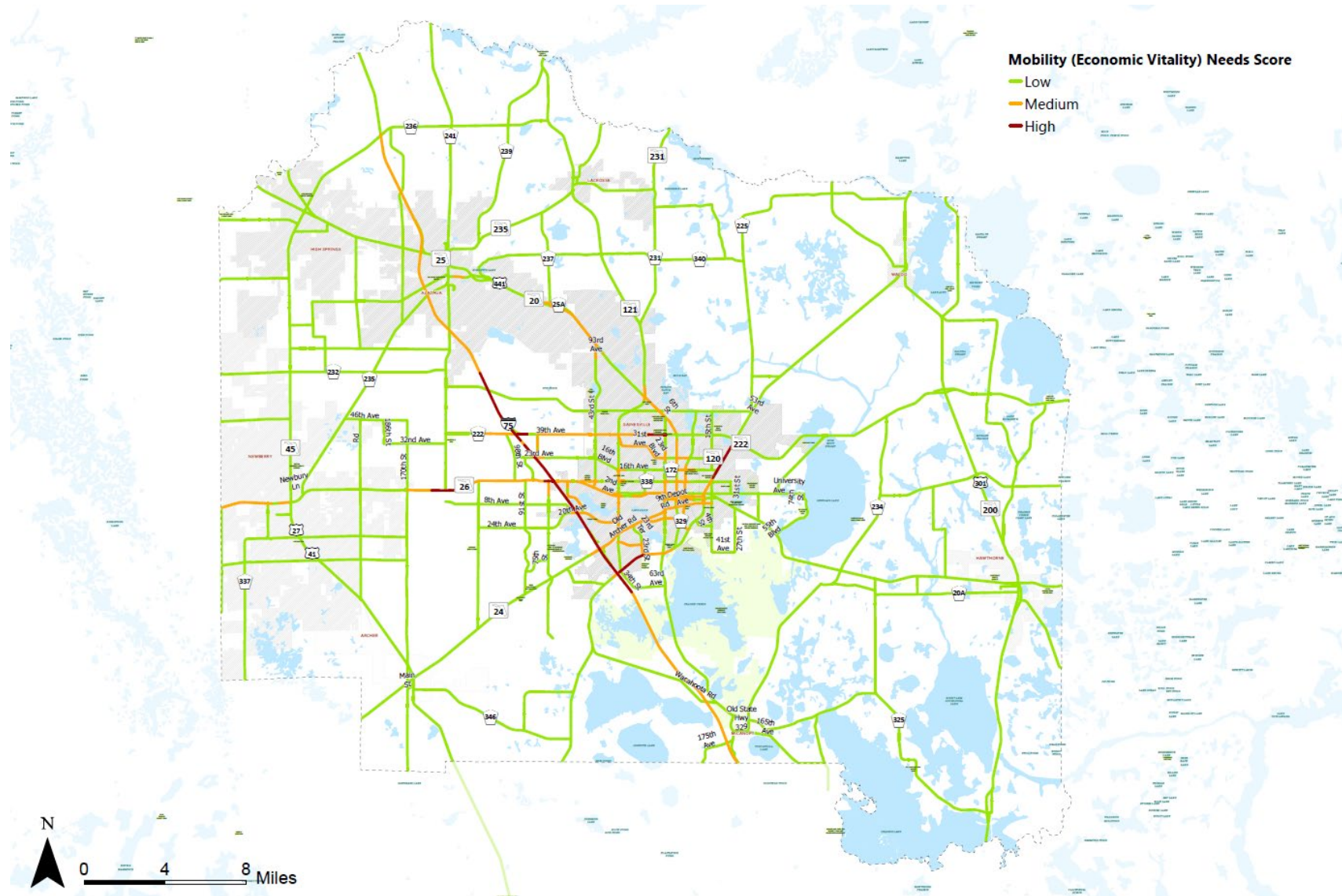


Figure 2: Multimodal/ Safety Needs Score

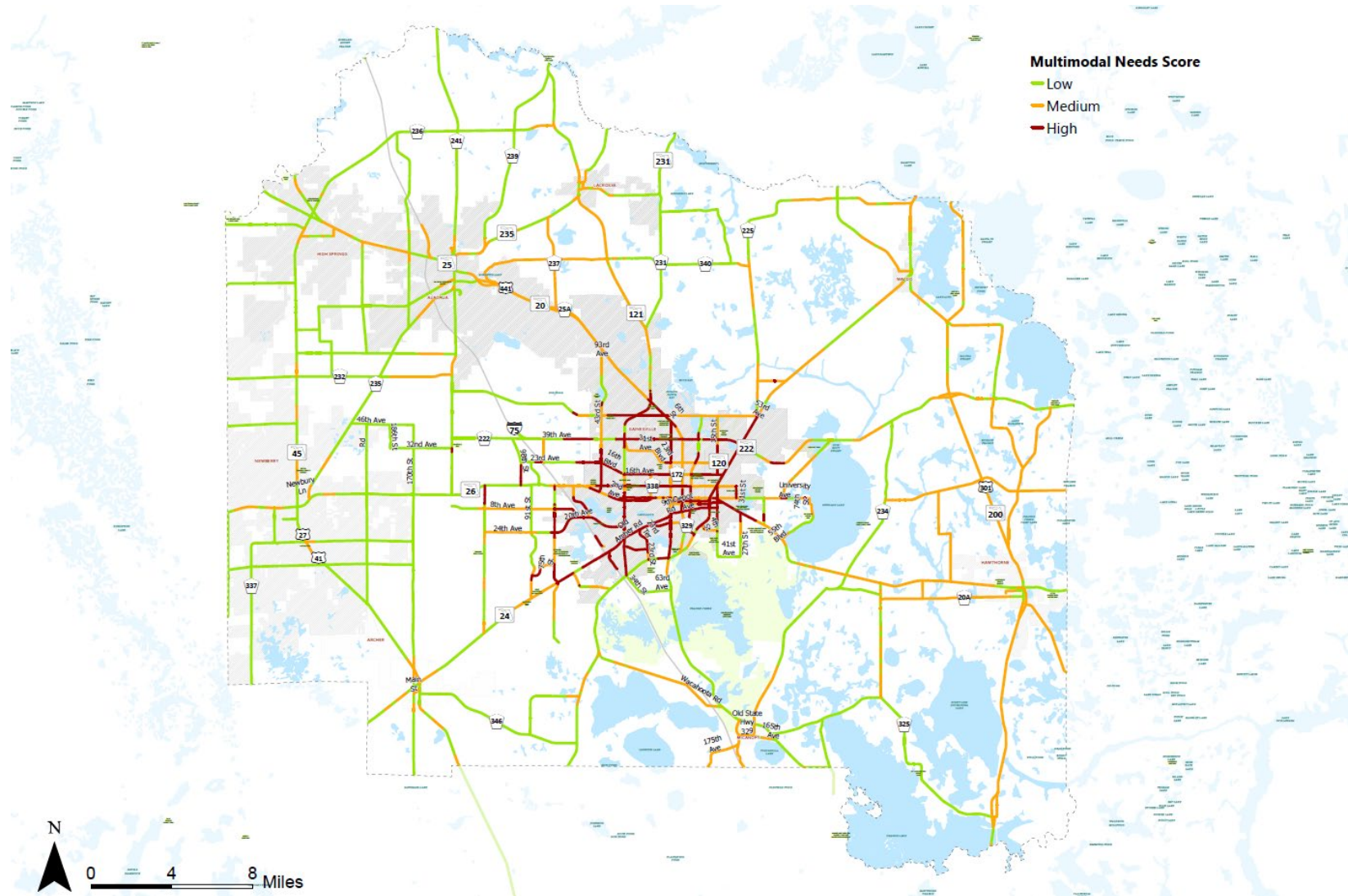


Figure 3: Safety Needs Score

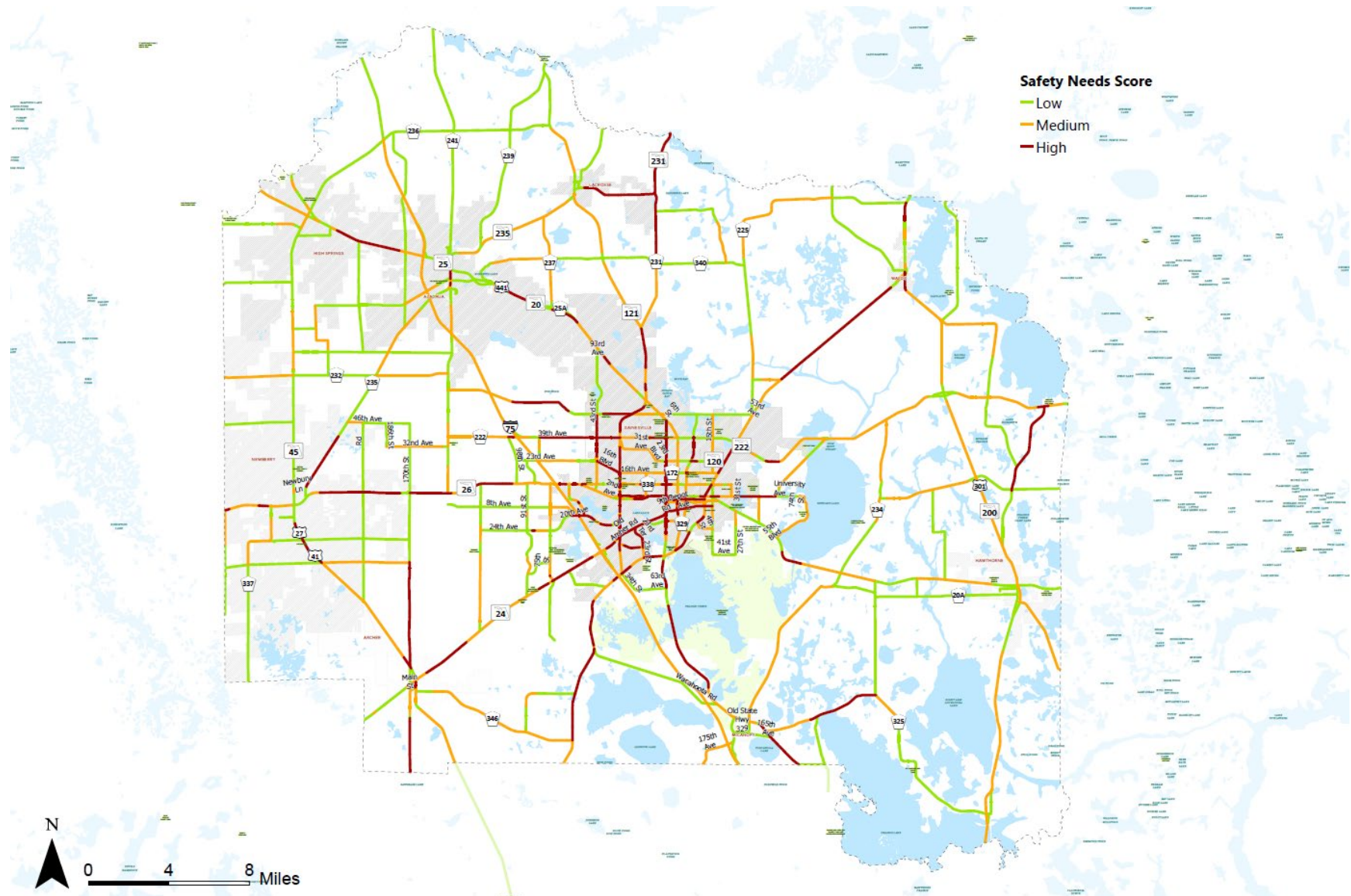
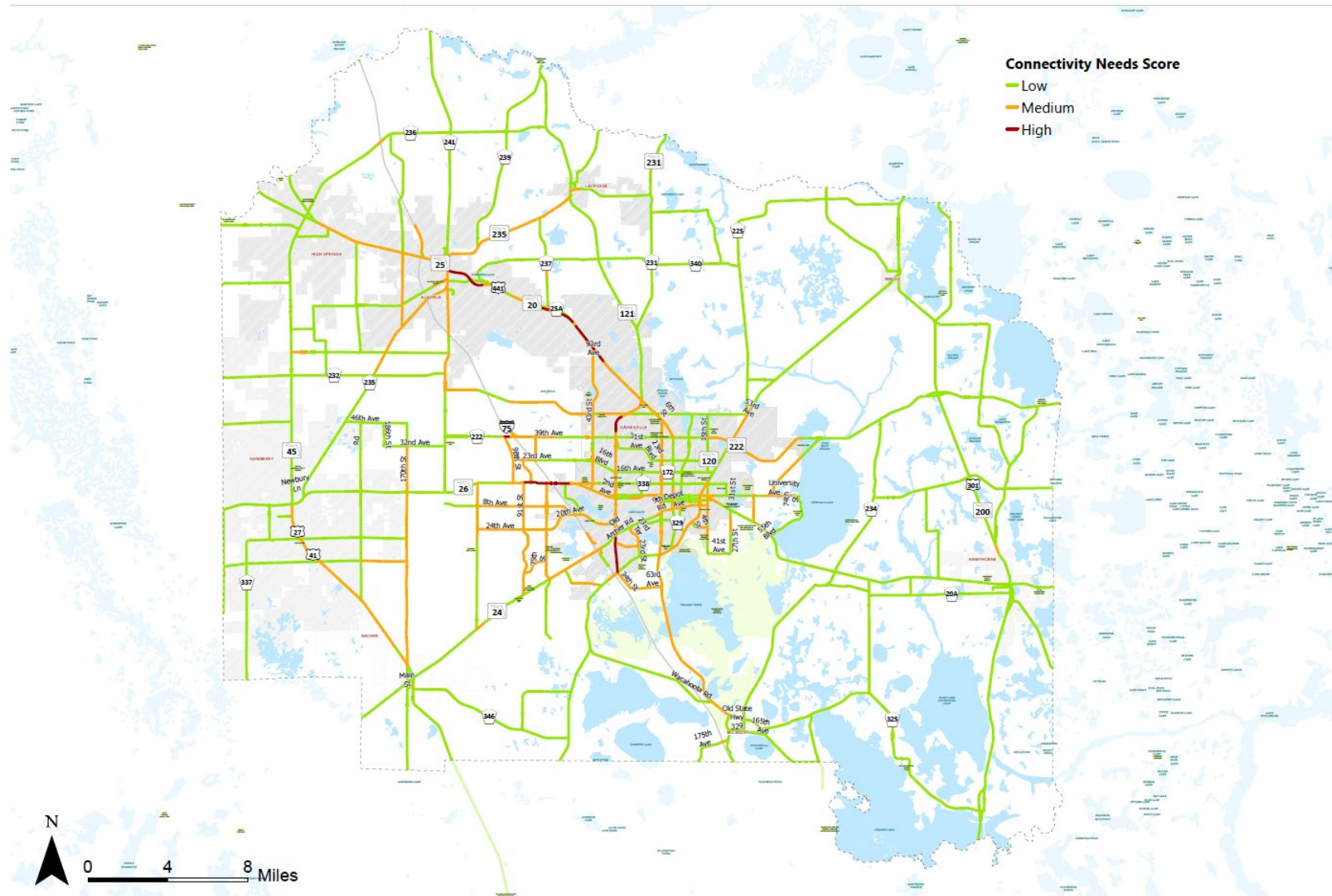


Figure 4: Connectivity Needs Score



The Needs Plan informs the development of the Cost Feasible Plan by identifying and prioritizing projects that represent the region's most critical transportation needs. These prioritized needs serve as the foundation for determining which projects should be included in the Cost Feasible Plan.

The resulting prioritized list of multimodal projects provides a framework for advancing future investments and funding strategies. It ensures that the Gainesville MTPo region can meet the evolving transportation demands of its communities while promoting a balanced, forward-looking transportation system. The list of projects and the corresponding maps of the needs plan are presented in Appendix A.

Appendix A

Table A4: Mobility Agency Projects

Project ID	Mobility Score	Environmental Protection Score	Preservation Score	Total Score	Street	From	To	Type	Urban	E+C
1	6.27	14.32	12.18	32.77	NW 53rd Avenue	NW 13th Street (US 441)	NW 34th Street (SR 121)	Widen Two (2) Lane to Four (4) Lane	1	0
2	12.54	14.32	0.00	26.86	I-75	SE County Road 234	SW Williston Road	Widening	0	0
3	12.54	14.32	0.00	26.86	I-75	NW 39th Ave (SR 222)	MLK Memorial Hwy (US 441)	Widening	0	0
4	0.00	14.32	12.18	26.50	NE 53rd Avenue	North Main Street	NW 13th Street (US 441)	Widen Two (2) Lane to Four (4) Lane	1	0
5	6.27	14.32	0.00	20.59	SW 20th Avenue (I-75 Overpass)	SW 52nd Boulevard	SW 61st Street	Widen Two (2) Lane to Four (4) Lane	1	0
6	6.27	14.32	0.00	20.59	NW 34th Street (SR 121)	NW 39th Ave (SR 222)	MLK Memorial Hwy (US 441)	Convert Two (2) Lane to Two (2) Lane Divided	1	0
7	6.27	14.32	0.00	20.59	North Main Street	NE 16th Avenue	NE 23rd Avenue (SR 120)	Convert 4/5 Lane to Two (2) Lane Divided	1	0
8	6.27	14.32	0.00	20.59	NE 16th Avenue	NE 12th Street	North Main Street	Upgrade to Two (2) Lane Urban Section Road	1	0
9	6.27	14.32	0.00	20.59	NW 23rd Street (SR 121)	MLK Memorial Hwy (US 441)	CR 231	Widen Two (2) Lane to Four (4) Lane	1	0
10	6.27	14.32	0.00	20.59	SE 16th Avenue (SR 226)	Williston Road (SR 331)	South Main Street	Widen Two (2) Lane to Four (4) Lane	1	0
11	6.27	14.32	0.00	20.59	NW 23Road Avenue	Fort Clarke Boulevard	NW 83rd Street	Widen to 4	1	0
12	0.00	7.16	12.18	19.34	NE 53rd Avenue	Waldo Road (SR 24)	North Main Street	Widen Two (2) Lane to Four (4) Lane	0	0
13	0.00	14.32	0.00	14.32	NE 39th Avenue (SR 222)	NE 55th Boulevard (SR 26)	Gainesville Regional Airport Entrance	Widen Two (2) Lane to Four (4) Lane	1	0
14	0.00	14.32	0.00	14.32	SW Williston Road (SR 121)	SW 62nd Avenue	SW 73rd Avenue Extension (New Road)	Widen Two (2) Lane to Four (4) Lane	0	0
15	0.00	14.32	0.00	14.32	NW 53rd Avenue	NW 34th Street (SR 121)	NW 43rd Street	Widen Two (2) Lane to Four (4) Lane	1	0
16	0.00	14.32	0.00	14.32	NE 16th Avenue	Waldo Road (SR 24)	NE 12th Street	Upgrade to Two (2) Lane Urban Section Road	1	0
17	0.00	14.32	0.00	14.32	Archer Road/SR 24	SW 122nd Street	SW 91st Street	Widen to 4 Lane	1	1
18	0.00	14.32	0.00	14.32	NW 23Road Avenue	NW 98th Street	Fort Clarke Blvd	Widen to 4	1	0
19	0.00	14.32	0.00	14.32	Archer Road	SW 91st Street	SW 76th Court	Widen to 4	1	1
20	6.27	7.16	0.00	13.43	SW Williston Road (SR 121)	SW 41st Boulevard (Fred Bear Drive)	SW 62nd Avenue	Widen Two (2) Lane to Four (4) Lane	0	0
21	6.27	7.16	0.00	13.43	Williston Road/SR 121	SW 62nd Avenue	SW 35th Drive	Widen to 4 Lane	0	0
22	0.00	7.16	0.00	7.16	Archer Road	SW 73rd Avenue	SW 91st Street	Widen to 4	1	1

Table A5: Mobility Projects- 2045 L RTP

Project ID	Mobility Score	Environmental Protection Score	Preservation Score	Total Score	Street	From	To	Type
1	6.27	14.32	12.18	32.77	NW 83rd Street	NW 23rd Avenue	NW 39th Avenue	Widen to 4 lanes 2 dedicated transit lanes
2	6.27	14.32	0.00	20.59	NW 23rd Avenue	NW 59th Terrace	NW 83rd Street	New Construction 3 lanes Complete Street/replace 2 lane rural section
3	6.27	14.32	0.00	20.59	SW 62nd Boulevard	SW 20th Avenue	Clark Butler Boulevard	Widen to 4 lanes, with bridge with Bus Rapid Transit lanes; median included
4	0.00	14.32	12.18	26.50	NW 98th Street	Newberry Road (State Road 26)	NW 39th Avenue	New construction of 4 lanes/ replace a 2-lane rural section
5	6.27	14.32	0.00	20.59	NW 8th Avenue (State Road 20)	NW 6th Street	Main Street	Two Lane reduction/ Complete Streets
6	0.00	14.32	12.18	26.50	Ft. Clark Boulevard	Newberry Road (State Road 26)	NW 23rd Avenue	Widen to 4 lanes/ 2 dedicated transit lanes
7	6.27	14.32	12.18	32.77	SW 20th Avenue	SW 62nd Boulevard	SW 34th Street	New construction 4 lanes/replace a 2-lane rural section with replacement of current bridge due to deficiency with bridge that spans over SW 38th Terrace
8	6.27	14.32	0.00	20.59	NW 23rd Avenue	NW 83rd Street	Ft. Clarke Boulevard	New construction 4 lanes/replace a 2-lane rural section, including bridge over I-75 + Transit Pre-emption Provisions
9	6.27	14.32	0.00	20.59	SW 62nd Boulevard	Newberry Road (State Road 26)	SW 20th Avenue	Widen to 4 lanes with Bus Rapid Transit lanes; median included

Table A6: Multimodal/ Safety Projects- City of Gainesville

Project ID	Multimodal Score	Environmental Protection Score	Total Score	Street	From	To	Type
1	4.25	14.32	18.57	NW 42nd Avenue	NW 13th Street	NW 6th Street	Sidewalk Priority
2	4.25	14.32	18.57	NE 3rd Avenue	NE 25 Street	NE Waldo Road	Bike Boulevard
3	4.00	14.32	18.32	SW 2nd Avenue	S Main Street	SW 6th Street	Protected Bike Lane
4	4.00	14.32	18.32	W University Avenue /(SR 26)	NW 13th Street (US 441)	NW 20th Street	Funded
5	3.50	14.32	17.82	SE / SW 4th Avenue	Williston Road (SR 331)	SW 13th Street (US 441)	One-Way Multimodal Pair
6	3.50	14.32	17.82	SW 62nd Avenue	Williston Road (SR 331)	Archer Road (SR 24)	Multi-Use Trail
7	3.00	14.32	17.32	West University Avenue (SR 26)	NW 6th Street	NW 13th Street (US 441)	Reimagine University Ave
8	3.00	14.32	17.32	Archer Road (SR 24)	SW 13th Street (US 441)	SW 16th Street	Reimagine Archer Rd / SR 24
9	3.00	14.32	17.32	Archer Road (SR 24)	SW 16th Street	Interstate 75	Reimagine Archer Rd / SR 24
10	3.00	14.32	17.32	SW 40th Boulevard	Archer Road	4100 Block (existing)	Sidewalk Priority
11	3.00	14.32	17.32	6th Street Trail Extension	NW 39th Avenue (SR 222)	NW 13th Street (US 441)	Multi-Use Trail
12	3.00	14.32	17.32	SW 34th Street (SR 121)	Williston Road (SR 331)	NW 2nd Avenue (SR 26A)	Widen Sidewalk to 8'
13	3.00	14.32	17.32	SW 13th Street (US 441)	NW 39th Avenue (SR 222)	NW 6th Street (SR 20)	Widen Sidewalk to 8'
14	3.00	14.32	17.32	Williston Road (SR 331)	SE 2nd Avenue	SE 16th Avenue	Multi-Use Trail
15	3.00	14.32	17.32	NW 8th Avenue	NW 34th Street (SR 121)	NW 43rd Street	Widen Sidewalk to 8'
16	3.00	14.32	17.32	SE 2nd Avenue & SE 11th Avenue	Depot Avenue Trail	E University Avenue (SR 26)	Multi-Use Trail
17	3.00	14.32	17.32	SW 40th Boulevard	Archer Road (SR 24)	Terminus of existing trail	Multi-Use Trail
18	3.00	14.32	17.32	Waldo Greenway Upgrade Phase 1	E University Avenue (SR 26)	NE 16th Avenue	Trail Upgrade
19	3.00	14.32	17.32	Kermit Sigmon (Old Archer) Trail	SW 16th Street	SW 34th Street (SR 121)	Trail Upgrade
20	2.50	14.32	16.82	MLK Memorial Hwy (US 441)	NW 53rd Avenue	NW 34th Boulevard (SR 121)	Multi-Use Trail
21	2.50	14.32	16.82	MLK Memorial Hwy (US 441)	NW 6th Street (SR 121)	NW 53rd Avenue	Multi-Use Trail
22	2.50	14.32	16.82	NW 53rd Avenue	ML King Memorial Highway (US 441)	NW 34th Boulevard / SR 121	Multi-Use Trail
23	2.50	14.32	16.82	N 53rd Avenue	NE 15th Street	ML King Memorial Highway (US 441)	Multi-Use Trail
24	2.50	14.32	16.82	East University Avenue (SR 26)	Fred Cone Park (NE 31st Street)	Waldo Road (SR 24)	Reimagine University Ave
25	2.50	14.32	16.82	NW 6th Street (SR 20)	NW 8th Avenue	NW 16th Avenue	Complete Streets Study
26	2.50	14.32	16.82	SW 12th Street	SW 8th Avenue	West University Avenue (SR 26)	One-Way Multimodal Pair
27	2.50	14.32	16.82	SW 35th Place	SW 23rd Ter	existing	Sidewalk Priority
28	2.50	14.32	16.82	SE 9th Street	SE 7th Avenue	SE 12th Avenue	Sidewalk Priority
29	2.50	14.32	16.82	SW 35th Place	SW 32nd Ter	Enclave entrance	Sidewalk Priority
30	2.50	14.32	16.82	SW 40th Boulevard	SW 30th Avenue	3300 Block (existing)	Sidewalk Priority
31	2.50	14.32	16.82	MLK Memorial Hwy (US 441)	NW 34th Boulevard (SR 121)	NW 43rd Street	Multi-Use Trail
32	2.50	14.32	16.82	SW 34th Street (SR 121)	NW 2nd Avenue (SR 26A)	W University Avenue (SR 26)	Multi-Use Trail
33	2.50	14.32	16.82	SW 13th Street (US 441)	NW 23rd Avenue (SR 120)	NW 39th Avenue (SR 222)	Widen Sidewalk to 8'
34	2.50	14.32	16.82	Hawthorne Road (SR 20)	SE 27th Street	E University Avenue (SR 26)	Widen Sidewalk to 8'
35	2.50	14.32	16.82	S Main Street	SE 16th Avenue	Williston Road (SR 311)	Widen Sidewalk to 8'
36	2.50	14.32	16.82	NE 9th Street	E University Avenue / SR 26	NE 23rd Avenue	Funded
37	2.50	14.32	16.82	SE 3rd Avenue	Hawthorne Road (SR 20)	SE 11th Street (SR 331)	Buffered or Protected Bike Lane
38	2.50	14.32	16.82	NE 15th Street	NE 8th Avenue	E University Avenue / SR 26	Buffered or Protected Bike Lane
39	2.50	14.32	16.82	SW 2nd Avenue	SW 6th Street	SW 13th Street (US 441)	Protected Bike Lane

Project ID	Multimodal Score	Environmental Protection Score	Total Score	Street	From	To	Type
40	2.50	14.32	16.82	NW 8th Avenue (SR 20)	NW 4th Street	NW 6th Street	Funded
41	2.50	14.32	16.82	NW 8th Avenue (SR 20)	N Main Street	NW 4th Street	Funded
42	2.50	14.32	16.82	SW 40th Boulevard	Hogtown Boardwalk	Archer Road (SR 24)	Multi-Use Trail
43	2.50	14.32	16.82	NE 31st Avenue	NE Waldo Road (SR 24)	NE 15th Street	Funded
44	2.50	14.32	16.82	NW 43rd Street	NW 8th Avenue	NW 53rd Avenue	Widen Sidewalk to 8'
45	2.50	14.32	16.82	SW 13th Street (US 441)	Archer Road (SR 24)	Museum Road	Multi-Use Trail
46	2.50	14.32	16.82	Newberry Road (SR 26)	NW 43rd Street	NW 8th Avenue	Widen Sidewalk to 8'
47	2.50	14.32	16.82	NW 43rd Street	Newberry Road (SR 26)	NW 8th Avenue	Widen Sidewalk to 8'
48	2.50	14.32	16.82	Newberry Road (SR 26)	NW 38th Street	NW 43rd Street	Funded
49	2.25	14.32	16.57	Waldo Greenway Extension	NE 47th Avenue	Northern City Limits	Multi-Use Trail
50	2.25	14.32	16.57	Hawthorne Road (SR 20)	SE 43rd Street	SE 27th Street	Multi-Use Trail
51	2.25	14.32	16.57	NW 43rd Street	NW 53rd Avenue	NW 43rd Way	Multi-Use Trail
52	2.25	14.32	16.57	NE 15th Street	NE 53rd Avenue	NE 31st Avenue	Multi-Use Trail
53	2.00	14.32	16.32	SW 6th Street	SW Depot Avenue	SW 16th Avenue	Complete Street Reconstruction
54	2.00	14.32	16.32	West University Avenue (SR 26)	NW 2nd Street	NW 6th Street	Reimagine University Ave
55	2.00	14.32	16.32	East University Avenue (SR 26)	Waldo Road (SR 24)	SW 2nd Street	Reimagine University Ave
56	2.00	14.32	16.32	N Main Street (gap)	N 16th Avenue	N 1800 block	Sidewalk Priority
57	2.00	14.32	16.32	SW 4th Avenue	SW 3rd Street	SW 5th Street	Sidewalk Priority
58	2.00	14.32	16.32	NW 23rd Boulevard	NW 22nd Street	Gaineswood Entrance	Sidewalk Priority
59	2.00	14.32	16.32	NW 23rd Boulevard	NW 22nd Street	Gaineswood Entrance	Sidewalk Priority
60	2.00	14.32	16.32	SW 34th Street (SR 121)	NW 8th Avenue	NW 16th Avenue	Widen Sidewalk to 8'
61	2.00	14.32	16.32	SW 13th Street (US 441)	NW 16th Avenue	NW 23rd Avenue (SR 120)	Widen Sidewalk to 8'
62	2.00	14.32	16.32	SW 13th Street (US 441)	NW 10th Avenue	NW 16th Avenue	Widen Sidewalk to 8'
63	2.00	14.32	16.32	NW 43rd Street	NW 73rd Avenue	ML King Memorial Hwy (US 441)	Multi-Use Trail
64	2.00	14.32	16.32	Glen Springs Braid Trail	NW 16th Ter	NW 34th Street	Multi-Use Trail
65	2.00	14.32	16.32	SE 7th Avenue	SE 15th Street	SE 11th Street (SR 331)	Bike Lane
66	2.00	14.32	16.32	Newberry Road (SR 26)	NW 8th Avenue	NW 62nd Street	Widen Sidewalk to 8'
67	2.00	14.32	16.32	N 23rd Avenue (SR 120)	6th Street Rail Trail Extension	NW 6th Street	Widen Sidewalk to 8'
68	2.00	14.32	16.32	NW 16th Avenue	6th Street Trail	NW 6th Street	Widen Sidewalk to 8'
69	2.00	14.32	16.32	SW 13th Street (US 441)	Inner Road	W University Avenue (SR 26)	Multi-Use Trail
70	2.00	14.32	16.32	NW 8th Avenue	NW 43rd Street	Newberry Road (SR 26)	Widen Sidewalk to 8'
71	2.00	14.32	16.32	NW 16th Avenue Trail	N Main Street	6th Street Trail	Multi-Use Trail
72	2.00	14.32	16.32	NW 16th Avenue	NW 6th Street	NW 13th Street (US 441)	Widen Sidewalk to 8'
73	2.00	14.32	16.32	N 23rd Avenue (SR 120)	NW 6th Street	NW 13th Street (US 441)	Widen Sidewalk to 8'
74	1.75	14.32	16.07	NW 6th Street (SR 20)	NW 39th Avenue (SR 222)	NW 13th Street (US 441)	Complete Streets Study
75	1.75	14.32	16.07	NW 34th Boulevard (SR 121)	NW 53rd Avenue	ML King Memorial Hwy (US 441)	Widen Sidewalk to 8'
76	1.75	14.32	16.07	SW 34th Street (SR 121)	NW 39th Avenue (SR 222)	NW 53rd Avenue	Widen Sidewalk to 8'
77	1.75	14.32	16.07	SW 34th Street (SR 121)	NW 16th Avenue	NW 39th Avenue (SR 222)	Widen Sidewalk to 8'
78	1.75	14.32	16.07	NE 39th Avenue (SR 222)	Placeanned Koppers Trail	NW 6th Street (SR 20)	Widen Sidewalk to 8'
79	1.75	14.32	16.07	NE 39th Avenue (SR 222)	Regional Juvenile Detention Center	NW 6th Street (SR 20)	Widen Sidewalk to 8'
80	1.75	14.32	16.07	NE 39th Avenue (SR 222)	NW 6th Street (SR 20)	NW 43rd Street	Widen Sidewalk to 8'

Project ID	Multimodal Score	Environmental Protection Score	Total Score	Street	From	To	Type
81	1.75	14.32	16.07	NE 25th Street	NE 8th Avenue	E University Avenue (SR 26)	Buffered or Protected Bike Lane
82	1.75	14.32	16.07	SE 43rd Street	E University Avenue (SR 26)	SE Hawthorne Road (SR 20)	Multi-Use Trail
83	1.63	14.32	15.95	MLK Memorial Hwy (US 441)	NW 43rd Street	Deerhaven Trail	Multi-Use Trail
84	1.50	14.32	15.82	NW 6th Street (SR 20)	NW 16th Avenue	NW 39th Avenue (SR 222)	Complete Streets Study
85	1.50	14.32	15.82	Williston Road (SR 331)	SW 34th Street (SR 121)	SW 41st Boulevard (Fred Bear Dr)	Multi-Use Trail
86	1.50	14.32	15.82	Williston Road (SR 331)	S Main Street	SW 13th Street (US 441)	Widen Sidewalk to 8'
87	1.50	14.32	15.82	NE 27th Avenue	NE 55th Boulevard	NE 39th Boulevard / SR 222	Funded
88	1.50	14.32	15.82	NE 9th Street	NE 31st Avenue	NE 23rd Avenue	Bike Boulevard
89	1.50	14.32	15.82	N 23rd Avenue (SR 120)	Waldo Road (SR 24)	6th Street Rail Trail Extension	Widen Sidewalk to 8'
90	1.00	14.32	15.32	Pine Ridge South Trail	NW 53rd Avenue	NW 45th Avenue	Multi-Use Trail
91	3.50	7.16	10.66	SW 24th Avenue	I-75 overpass	SW 75th Street (Tower Road)	Multi-Use Trail
92	3.00	7.16	10.16	Williston Road (gap)	SW 16th Avenue	Existing	Sidewalk Priority
93	3.00	7.16	10.16	NW 8th Avenue	NW 18th Ter	NW 23rd Street	Multi-Use Trail
94	3.00	7.16	10.16	SW 2nd Avenue (SR 26A)	W University Avenue (SR 26)	SW 23rd Street	Widen Sidewalk to 8'
95	3.00	7.16	10.16	SE 22nd Avenue / SE 4th Street	SE 15th Street	Williston Road (SR 331)	Widen Sidewalk to 8'
96	2.50	7.16	9.66	SW 34th Street (SR 121)	W University Avenue (SR 26)	NW 8th Avenue	Widen Sidewalk to 8'
97	2.25	7.16	9.41	SE 13th Avenue	SE 15th Street	Williston Road (SR 331)	Multi-Use Trail
98	2.00	7.16	9.16	NW 22nd Street	NW 8th Avenue	NW 16th Avenue	Sidewalk Priority
99	2.00	7.16	9.16	NW 23rd Avenue Trail (NW 34th to Glen Springs Connection)	NW 23rd Avenue	NW 23rd Ter	Multi-Use Trail
100	2.00	7.16	9.16	SW 13th Street (US 441)	Museum Road	Inner Road	Funded
101	2.00	7.16	9.16	NW 22nd Street	NW 16th Avenue	NW 8th Avenue	Multi-Use Trail
102	1.75	7.16	8.91	SE 15th Street Trail	Boulware Springs Park	SE 7th Avenue	Funded
103	1.63	7.16	8.79	NE 53rd Avenue	Waldo Road (SR 24)	ML King Memorial Hwy (US 441)	Multi-Use Trail
104	1.63	7.16	8.79	Deerhaven Trail (SR 121)	NW 128th Ln	SR 121 @ CR 231 SPLIT	Multi-Use Trail
105	1.50	7.16	8.66	SW 63rd Boulevard	Archer Road (SR 24)	SW 41st Place	Multi-Use Trail
106	1.50	7.16	8.66	Williston Road (SR 331)	Entrance to Sweetwater Wetlands Park	S Main Street	Widen Sidewalk to 8'
107	1.13	7.16	8.29	Williston Road (SR 331)	SW 41st Boulevard (Fred Bear Dr)	SW 62nd Boulevard	Widen Sidewalk to 8'
108	1.00	7.16	8.16	E University Avenue (SR 26)	SE 43rd Street	SE 31st Street	Multi-Use Trail

Table A7: Multimodal/ Safety Projects- Alachua County

Project ID	Multimodal Score	Environmental Protection Score	Total Score	Street	From	To	Type
1	4.00	14.32	18.32	To Eastside Activity Center			Express Transit
2	3.50	14.32	17.82	SW 20th Avenue	SW 61st Street	SW 52nd Street	Complete Street
3	3.00	14.32	17.32	SW Archer Road	SW 91st Terrace	SW 45th Street	Dedicated Transit Line
4	3.00	14.32	17.32	SW 75 Street	SW Archer Road	W University Avenue	Shared Transit Line
5	3.00	14.32	17.32	Archer Road/SR 24	SW 122nd Street	SW 75th Street	Buffered Bike Lane
6	3.00	14.32	17.32	Newberry/ Jonesville Express			Express Transit
7	3.00	14.32	17.32	Santa Fe/ Tower Express			Express Transit
8	3.00	14.32	17.32	Haile Plantation Express			Express Transit
9	2.50	14.32	16.82	Santa Fe/ Tower Express			Express Transit
10	2.50	14.32	16.82	NW 23 Avenue	Fort Clark Boulevard	NW 83rd Street	Shared Transit Line
11	2.50	14.32	16.82	SW 45 Street	SW Archer Road	South of SW 36th Road	Dedicated Transit Line
12	2.50	14.32	16.82	SW 75 Street	W University Avenue	W Newberry Road	Shared Transit Line
13	2.25	14.32	16.57	SE HAWTHORNE Road	SE 43rd Street	SE 27th Street	Dedicated Transit Line
14	2.25	14.32	16.57	NE WALDO Road	Gainesville Regional Airport	NE 63rd Avenue	Dedicated Transit Line
15	2.25	14.32	16.57	SW 20th Avenue	NW 83rd Street	NW 51st Street	Multi-Use Path
16	2.25	14.32	16.57	Hawthorne Road/SR 20	SE 8th Avenue	SE 43rd Street	Multi-Use Path
17	2.25	14.32	16.57	Waldo Road/SR 24	Gainesville Regional Airport	US 301	Multi-Use Path
18	2.00	14.32	16.32	W Newberry Road	NW 143rd Street	I-75	Dedicated Transit Line
19	1.75	14.32	16.07	SW 122 Street	SW 31st Avenue	W University Avenue	Dedicated Transit Line
20	1.75	14.32	16.07	NW 122 Street	W University Avenue	NW 17th Avenue	Dedicated Transit Line
21	1.63	14.32	15.95	CR 234	US 441	SE Hawthorne Road	Multi-Use Path
22	1.63	14.32	15.95	SR 26	US 301	West Boulevard	Multi-Use Path
23	1.63	14.32	15.95	SR 26	NE County Road 234	US 301	Multi-Use Path
24	1.63	14.32	15.95	US 301	SE 71st Avenue	SE County Road 219A	Multi-Use Path
25	1.63	14.32	15.95	CR 219A	US 301	NE State Road 26	Multi-Use Path
26	1.50	14.32	15.82	NW 83 Street	NW 23rd Avenue	NW 39th Avenue	Dedicated Transit Line
27	1.50	14.32	15.82	CR 234	SE Hawthorne Road	NE State Road 26	Multi-Use Path
28	1.50	14.32	15.82	SW 75th Street	SW 75th Way	SW 73rd Avenue	Multi-Use Path
29	1.50	14.32	15.82	Williston Road/SR 121	I-75	SW 34th Street	Multi-Use Path
30	1.50	14.32	15.82	E University/SR 26	NE 24th Street	SE 43rd Street	Multi-Use Path
31	1.50	14.32	15.82	E University/SR 26	SE 43rd Street	E University Avenue	Multi-Use Path
32	1.13	14.32	15.45	NW 143rd St	NW 39th Avenue	Millhopper Road	Multi-Use Path
33	1.13	14.32	15.45	Williston Road/SR 121	SW 85th Avenue	SW 62nd Avenue	Multi-Use Path
34	1.00	14.32	15.32	Williston Road/SR 121	SW 41st Road	I-75	Multi-Use Path
35	0.63	14.32	14.95	Newberry Road/SR 26	SW 170th Street	SW 143rd Street	Multi-Use Path
36	2.25	7.16	9.41	SW 91 Street	SW Archer Road	SW 46th Boulevard	Dedicated Transit Line
37	2.00	7.16	9.16	Hawthorne Road/SR 20	SE 43rd Street	Lake Shore Drive	Multi-Use Path

Project ID	Multimodal Score	Environmental Protection Score	Total Score	Street	From	To	Type
38	1.75	7.16	8.91	SE 43 Street	SE Hawthorne Road	SE 11th Place	Dedicated Transit Line
39	1.13	7.16	8.29	SR 26	West Boulevard	Quail Street	Multi-Use Path
40	0.75	7.16	7.91	Fort Clarke Boulevard	NW 15th Place	NW 23rd Avenue	Dedicated Transit Line
41	0.75	7.16	7.91	Haile Plantation Express			Express Transit

Table A8: Safety Projects

Project ID	Safety Score	Preservation Score	Environmental Protection Score	Total Score	Street	From	To	Type
1	13.37	0	14.32	27.69	SW 13th Street (US 441)	Williston Road (SR 331)	SW 16th Street	Safety Enhancement
2	13.37	0	14.32	27.69	SW 13th Street (US 441)	SW 16th Street	W University Boulevard (SR 26)	Safety Enhancement
3	8.91	0	14.32	23.23	NW 13th Street (US 441)	NW8th Avenue	NW 16th Avenue	Safety Enhancement
4	8.91	0	14.32	23.23	NW 13th Street (US 441)	NW 16th Avenue	NW 23rd Avenue	Safety Enhancement
5	8.91	0	14.32	23.23	SW 13th Street (US 441)	W University Boulevard (SR 26)	NW 8th Avenue	Safety Enhancement
6	4.46	0	14.32	18.78	NE 8th Avenue	NE 11th Street	North Main Street	Safety Enhancement
7	4.46	0	14.32	18.78	NE 8th Avenue	Waldo Road (SR 24)	NE 11th Street	Safety Enhancement

Table A9: Connectivity Projects

Project ID	Connectivity Score	Street	From	To	Type
1	2	New Street			New Roads
2	2	SW 47th Avenue Extension (Phase 1 New Street) (Extension includes part of SW 29th Dr)	SE Williston Road (SR 331)	SW 34th Street (SR 121)	New Roads
3	1	New Street	Bledsoe Drive	Hull Road	New roadway from Bledsoe Dr to Hull Road with new intersection at SW 34th Street
4	1	Fletcher Drive			Conversion of Fletcher Dr to one way southbound with cycle track and Buckman Dr one way northbound with cycle track
5	1	NW 122nd Street			New Roads
6	1	SW 63rd Road Boulevard			New Roads
7	1	SW 69th Street			New Roads
8	1	New Street			New Roads
9	1	New Street			New Roads
10	1	SW 44th Street			New Roads
11	1	SE 20th Street Extension (New Street)	Hawthorne Road (SR 20)	SE 8th Avenue	New Roads
12	1	SE 15th Avenue Extension (New Street)	SE 15th Avenue (Existing Eastern Terminus)	SE 27th Avenue	New Roads
13	1	SW 35th Terrace Extension (New Street)	SW 35th Terrace (Existing Southern Terminus)	SW 47th Avenue	New Roads
14	1	SW 40th Boulevard Connector	SW 62nd Boulevard	SW 40th Boulevard (Existing Northern Terminus)	New Roads
15	1	SW 37th Street (New Street)	SW 39th Boulevard	SW 40th Boulevard	New Roads
16	1	SW 49th Street (New Street)	SW 51st Drive	SW 62nd Boulevard	New Roads
17	1	SW 55th Terrace Extension (New Street)	SW 55th Terrace	SW 62nd Ave	New Roads
18	1	SW 63rd Boulevard Extension (New Road)	SW 62nd Avenue	SW 73rd Avenue Extension (New Road)	New Roads
19	0	New roundabout at intersection of Hull Road and Mowry Road			New Roads
20	0	New Street			New Roads
21	0	New Street			New Roads
22	0	New Street			New Roads
23	0	SE 10th Avenue Extension (New Street)	SE 7th Street Extension (New Street)	SE 4th Street	New Roads
24	0	SE 21st Street Extension (New Street)	Hawthorne Road (SR 20)	SE 8th Avenue	New Roads
25	0	SE 7th Street Extension (New Street)	SE Depot Avenue	SE 11th Place	New Roads
26	0	SW 47th Avenue Extension (Phase 2 New Street)	SW 47th Avenue Extension (Phase 1 New Street)	SW 40th Place (Existing Western Terminus)	New Roads
27	0	Hull Rd Extension (Phase 1)	Hull Road (Existing Western Terminus)	SW 43rd Street	New Roads
28	0	SE 22nd Avenue Extension (New Street)	SE 21st Street Extension (New Street)	SE 15th Street	New Roads
29	0	SW 13th Rd Extension (New Street)	South Main Street	SW 6th Street	New Roads
30	0	SW 10th Avenue Extension (New Street)	South Main Street	SW 6th Street	New Roads
31	0	SW 57th Rd (New Road)	SW 63rd Boulevard	SW 75th Street	New Roads
32	0	SW 57th Avenue (New Road)	SW 49th Street (New Street)	SW 63rd Boulevard	New Roads
33	0	SW 73rd Avenue Extension (New Road)	Williston Road (SR 331)	SW 75th Street	New Roads

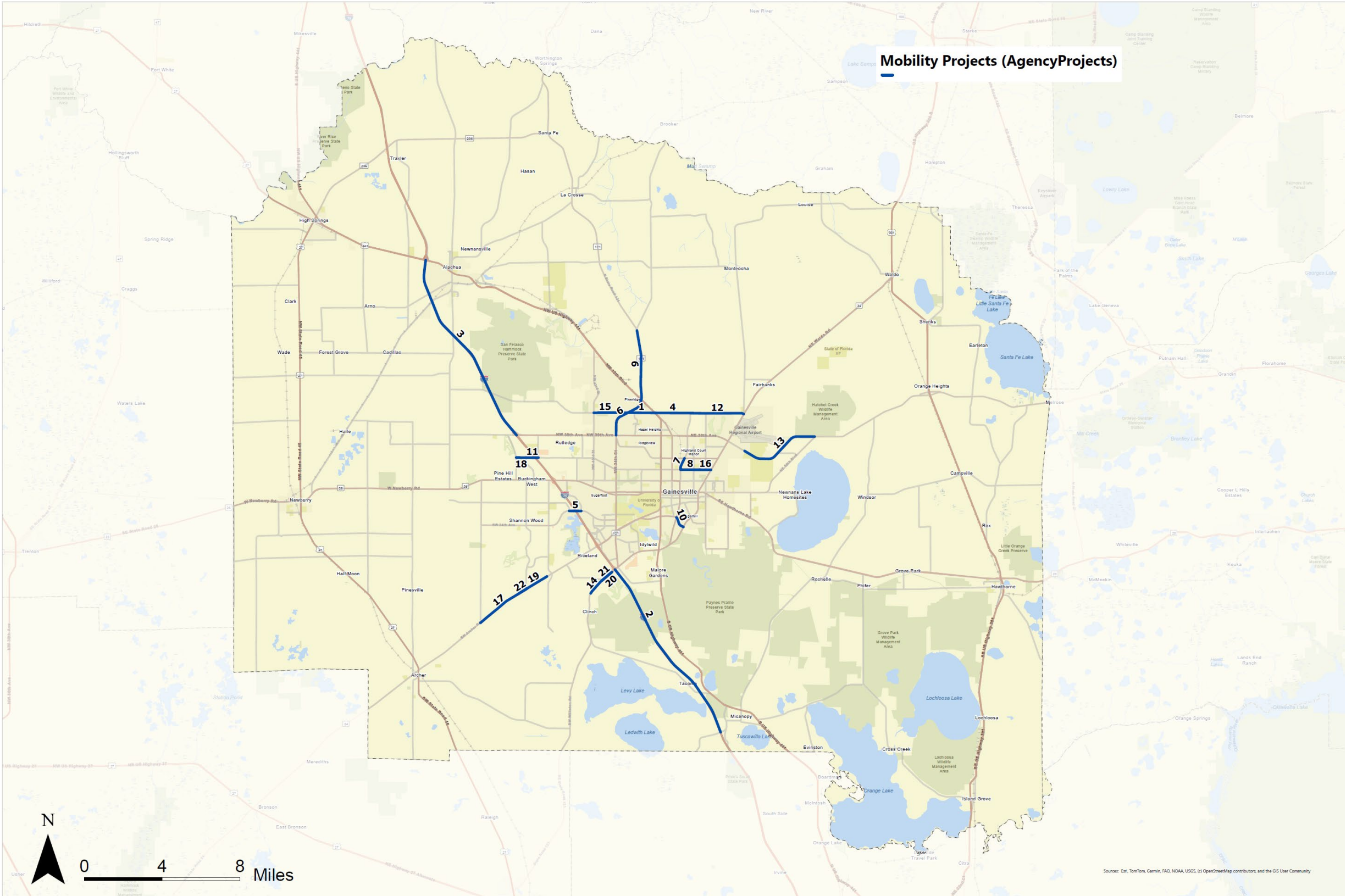


Figure A5: Mobility Agency Projects

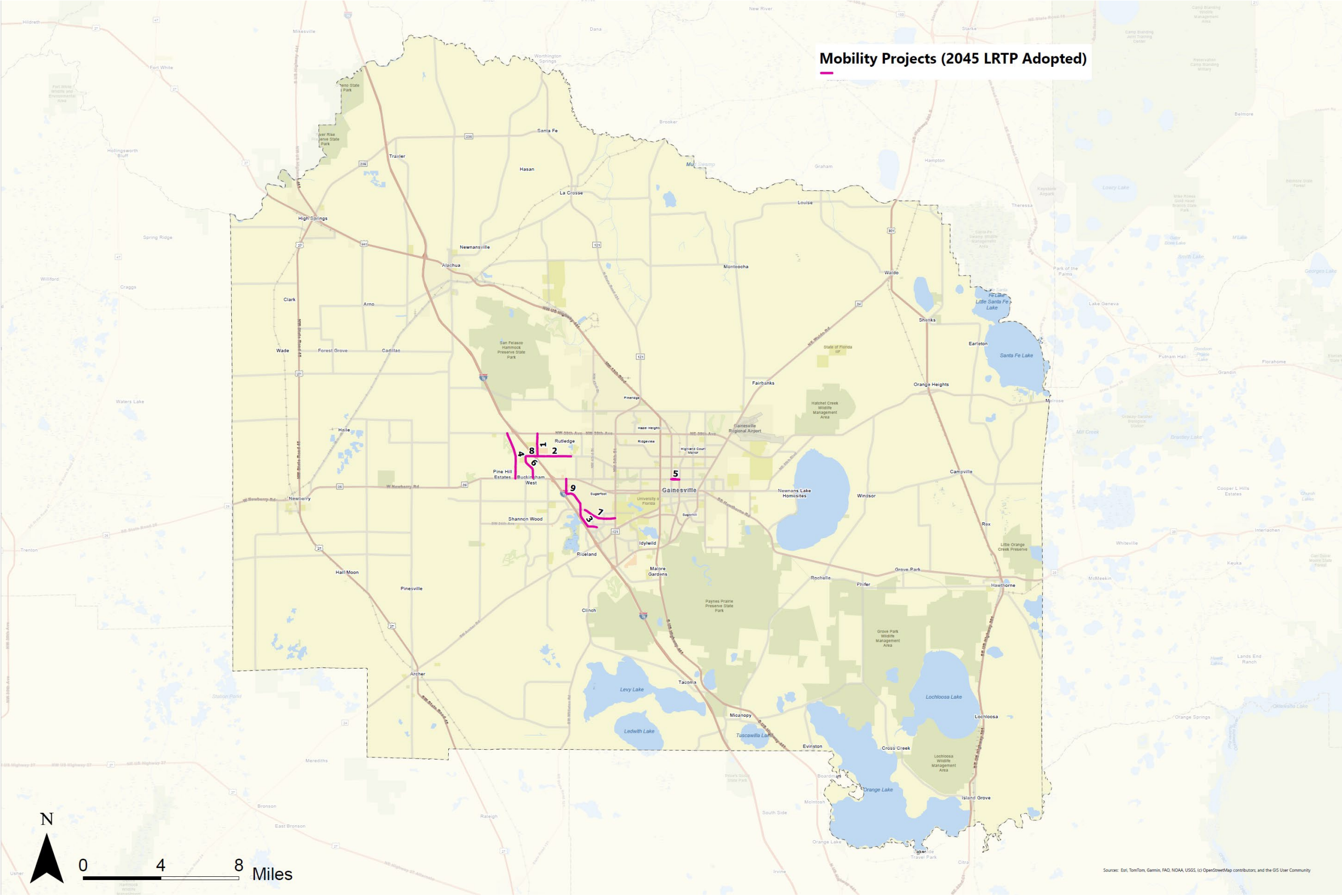


Figure A6: Mobility 2045 LRTP Projects

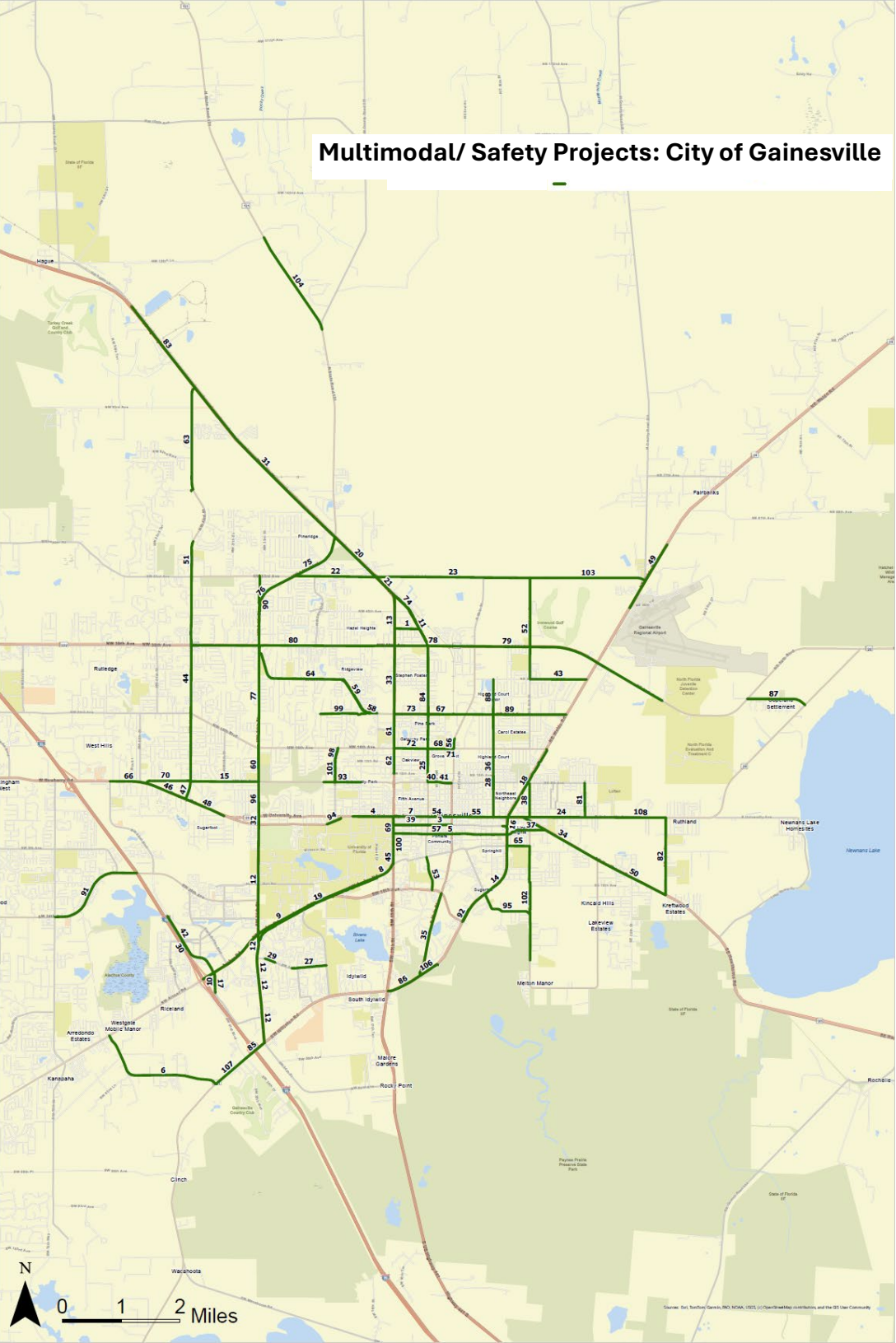


Figure A7: Multimodal/ Safety Projects- City of Gainesville

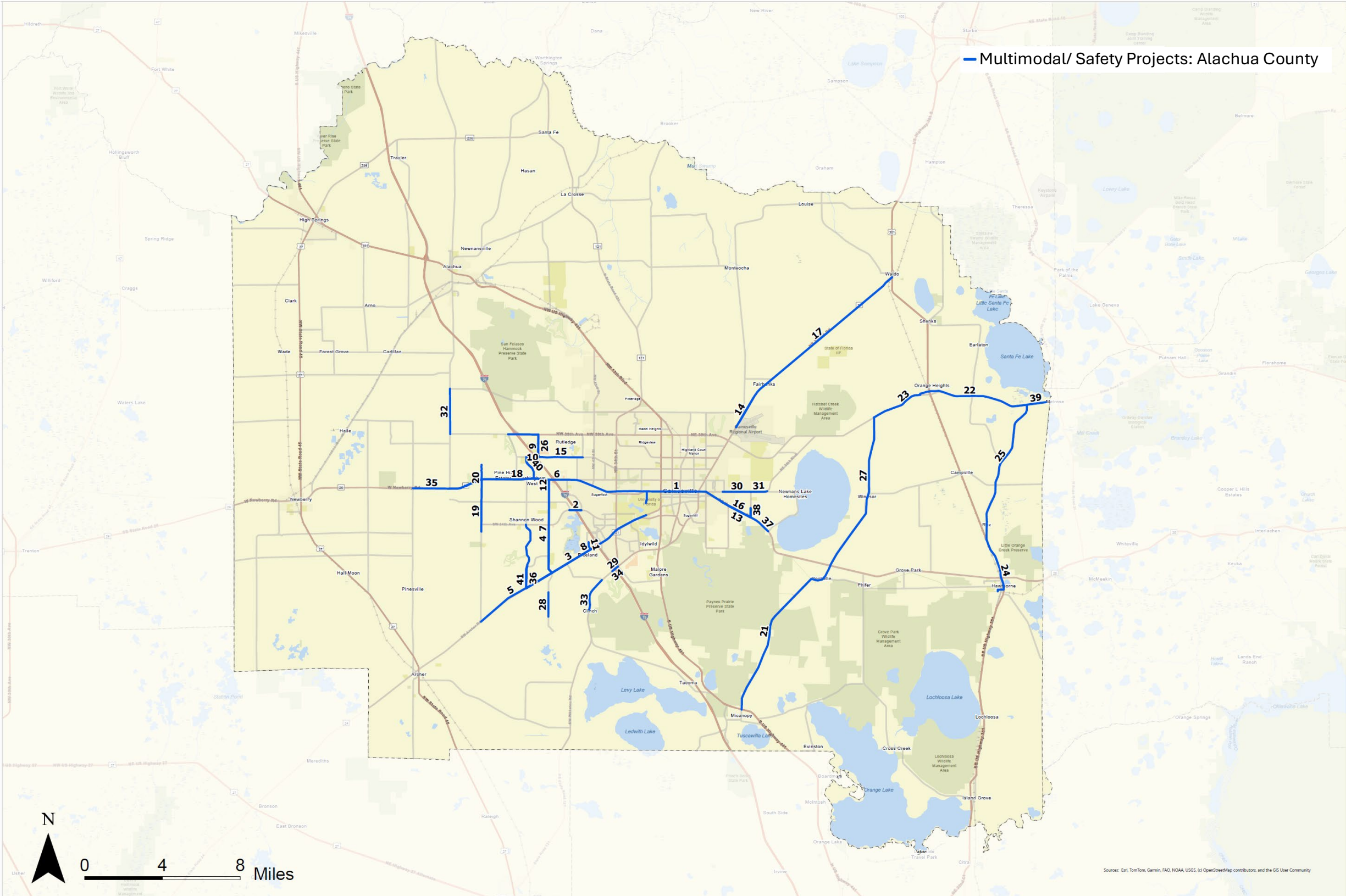


Figure A8: Multimodal/ Safety Projects- Alachua County

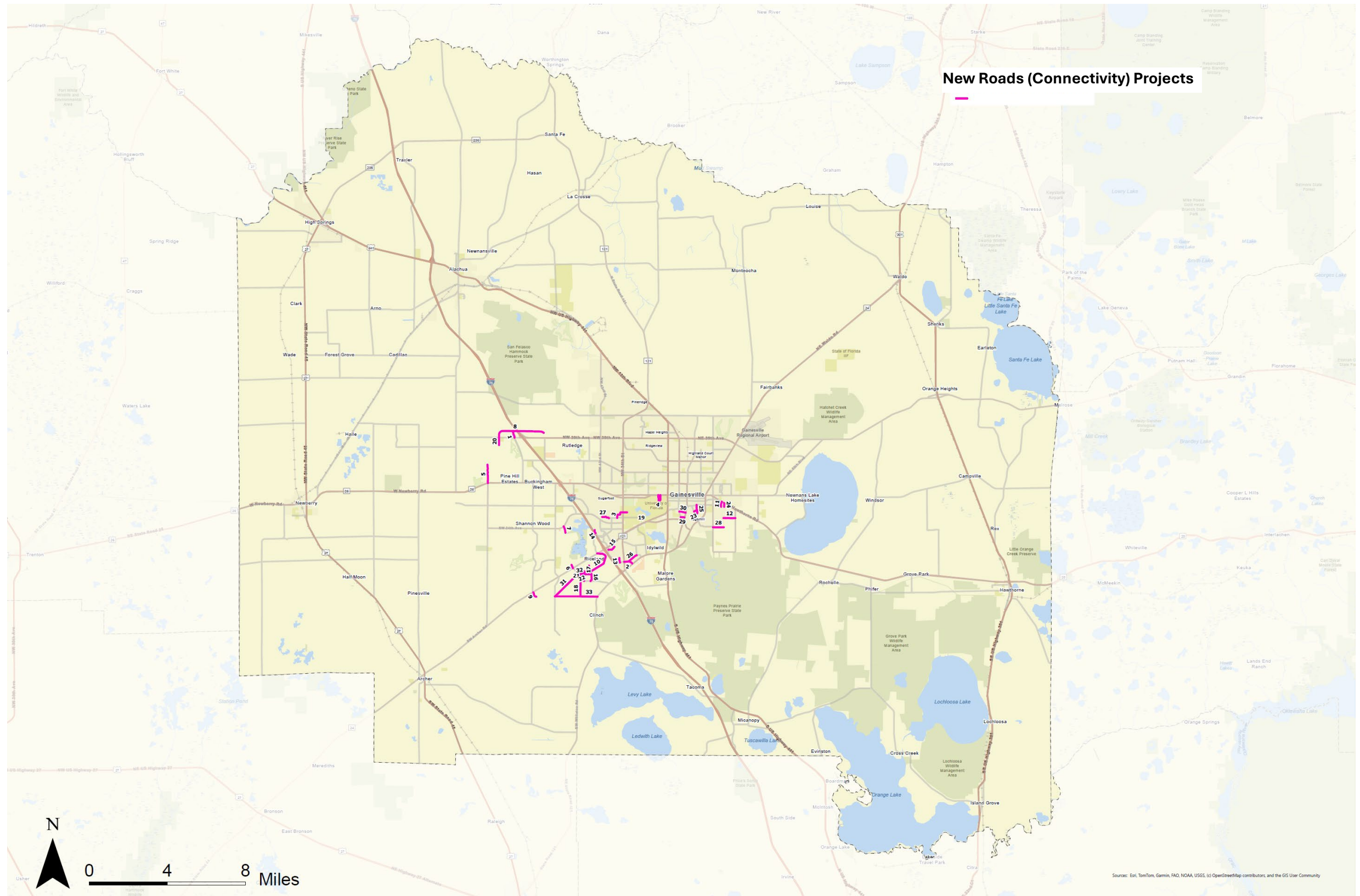


Figure A9: New Roads (Connectivity) Projects

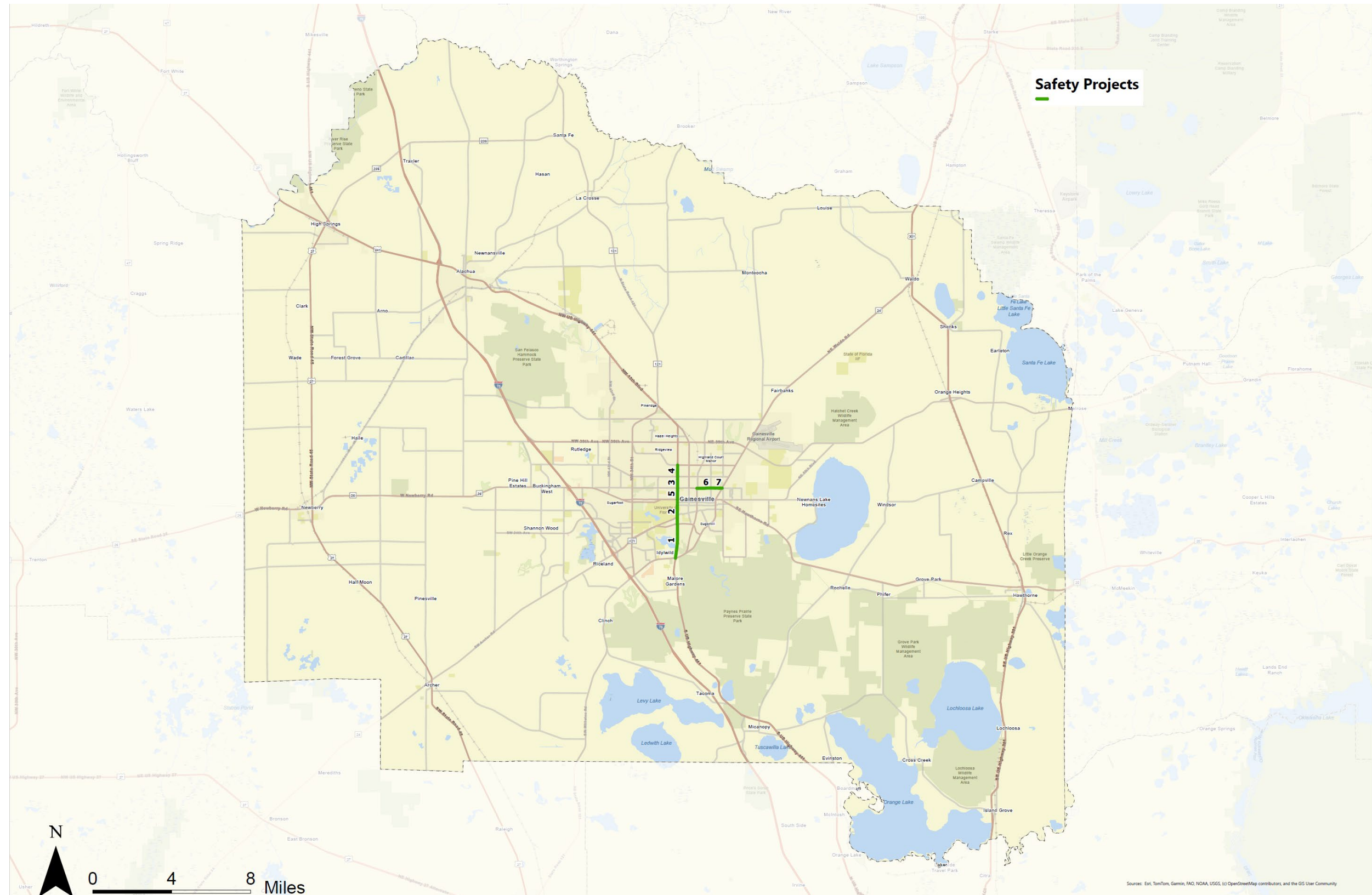


Figure A10: Safety Projects