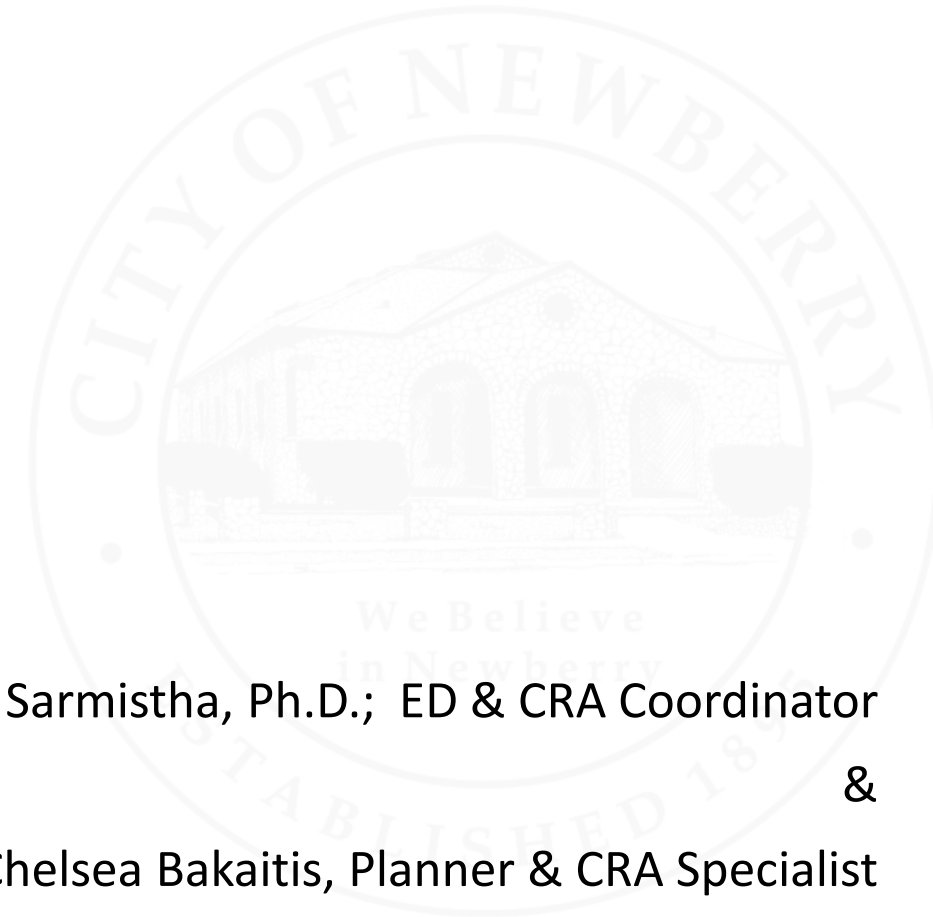




**Newberry**  
FLORIDA



# Newberry CRA

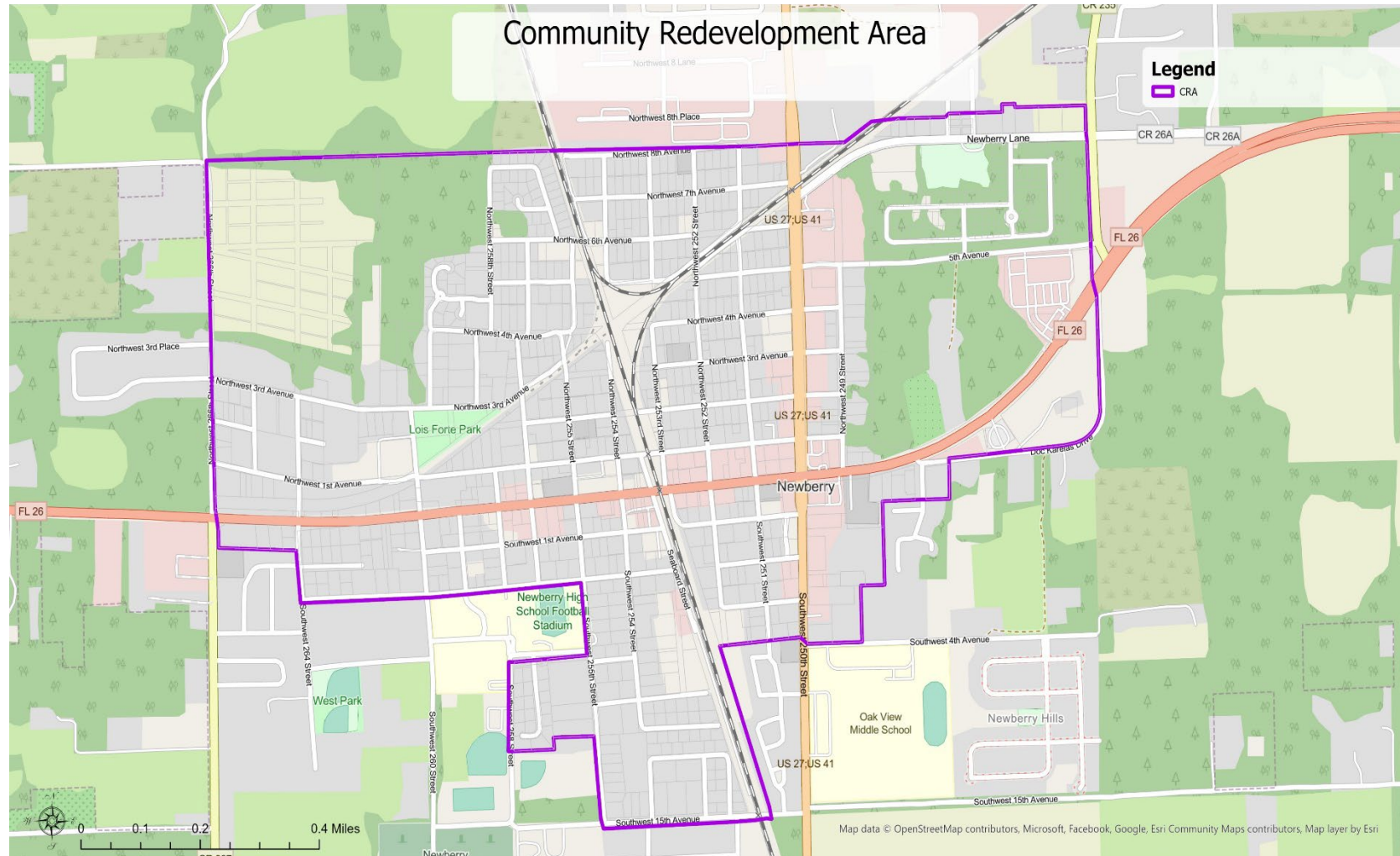


Uma Sarmistha, Ph.D.; ED & CRA Coordinator  
&  
Chelsea Bakaitis, Planner & CRA Specialist





# CRA Boundary



## Newberry CRA

- ❖ Formed in 2021
- ❖ Total area approx. 694 acres

# 2024-25 Newberry CRA Update

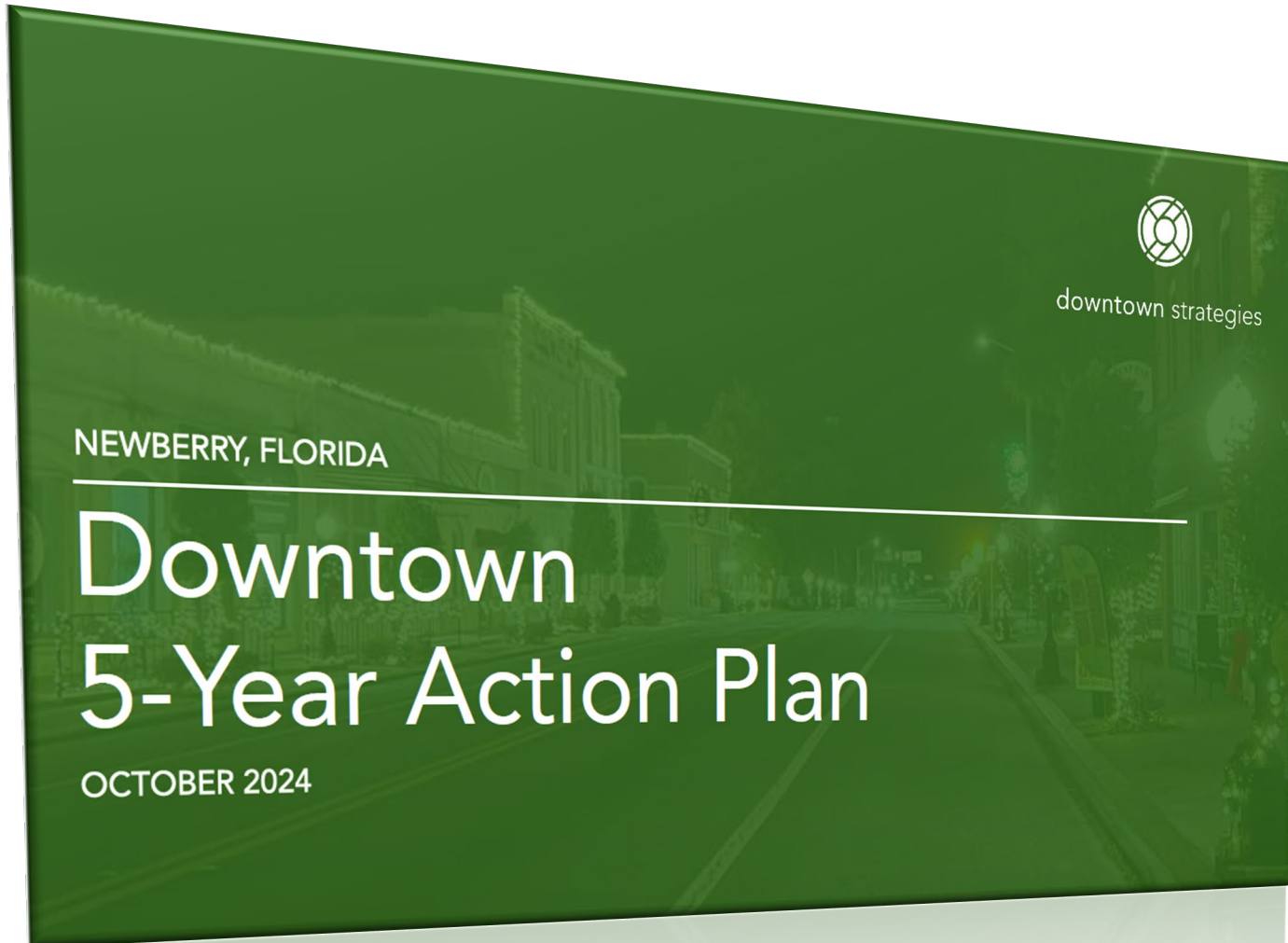


Total Fiscal year 24-25 Budget: \$ 1065301.2  
Base year taxable value (2020): \$36,079,104  
Current year taxable value: \$86,241,984  
Current year tax increment value: \$50,162,880

Rept: 9190 - FUND 190 - COMMUNITY REDEVELOPMENT AGENCY  
CRA 2025

G/L Account	G/L Description	2022 Actual	2023 Actual	2024 Budget	2024 Act+Enc	2025 Budget	Revised
REVENUES:							
190-338-1100	TIF CONTRIBUTION - COUNTY	0	162,074	238,000	237,229	281,163	
190-361-1000	INTEREST REVENUE	0	242	2,000	12,889		
190-381-1000	TIF CONTRIBUTION - CITY	0	162,074	238,000	237,229	281,163	
TOTAL REVENUES		0	324,390	478,000	487,347	562,326	

# Downtown 5-Year Strategic Plan



- Short-term
- Actionable
- Downtown focused

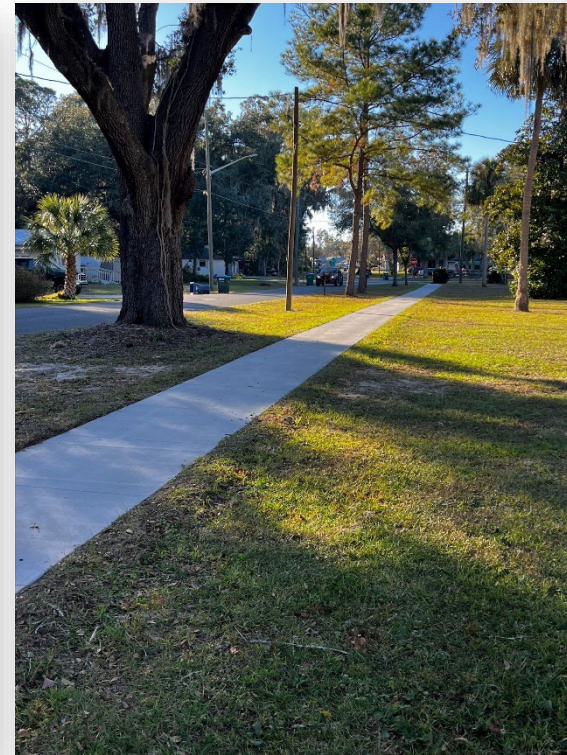








# 3<sup>rd</sup> Avenue Sidewalks





# Community Redevelopment Area

NW 3<sup>rd</sup> Ave  
Sidewalk  
Project

## Legend

 CRA

CR 26A

CR 26A

FL 26

FL 2

US 27;US 4

US 27;US 4

Newberry

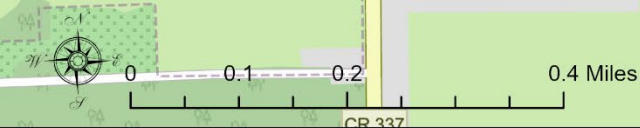
US 27:US 4

Newberry High School Football Stadium

Oak View  
Middle School

Newberry Hills

Southwest 15th Avenue



Map data © OpenStreetMap contributors, Microsoft, Facebook, Google, Esri Community Maps contributors, Map layer by Esri





# Ongoing/Future Projects



ECONOMIC  
DEVELOPMENT

WAYFINDING

BRANDING

BEAUTIFICATION

ART

EVENTS

LANDSCAPING

BANNERS



Façade Grant Program



Barry Park Beautification



Hitchcock Pond landscaping



Seaboard Drive Land Acquisition



Implement Downtown Strategy plan



# Ongoing/Future Projects (Continued)



ECONOMIC  
DEVELOPMENT

WAYFINDING

BRANDING

BEAUTIFICATION

ART

EVENTS

LANDSCAPING

BANNERS



Mural/Community Art Project



Christmas Decorations (Annual)



NW 260<sup>th</sup> Street Construction



SW 254<sup>th</sup> Reconstruction



Festivals



# Community Redevelopment Area

## Legend

CR CRA

Hitchcock Pond  
Landscaping

Barry Park  
Beautification

NW 260<sup>th</sup>  
Construction

Façade Grant:  
Newberry Road  
(SR 26) & US Hwy 27/41 (SR 45)

Christmas  
Decorations

Seaboard Drive  
Land Acquisition



## Contact Us



**City of Newberry**  
25440 West Newberry Road  
Newberry, FL 32669



352-472-2161



[www.newberryfl.gov](http://www.newberryfl.gov)