



Solid Waste & Resource Recovery Budget “Deep Dive”

April 1, 2025

Gus Olmos, P.E.

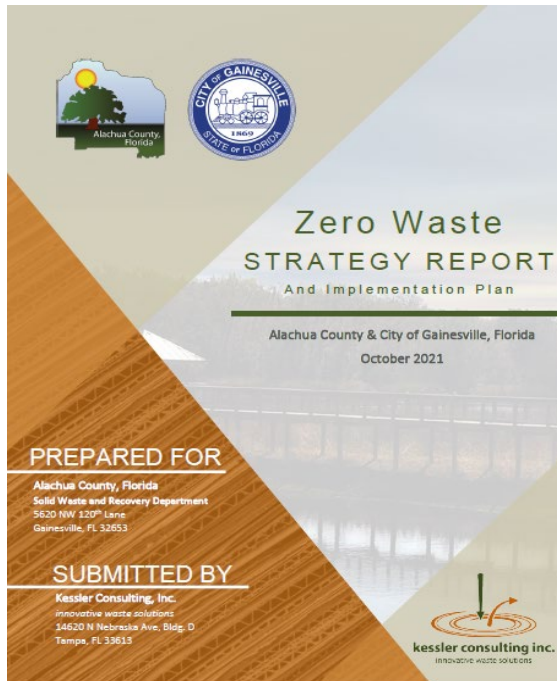
Mission Statement

To provide clean, efficient, economical, and environmentally sound management of solid waste resources in Alachua County.



Vision Statement

Focus on transitioning the current disposal and transfer system to a resource recovery-based system to maximize the efficient and cost-effective use of our resources.



Funding Sources

Fund 148 – Universal Refuse Collection Assessment

Fund 400 – Tipping & Recycling Fees

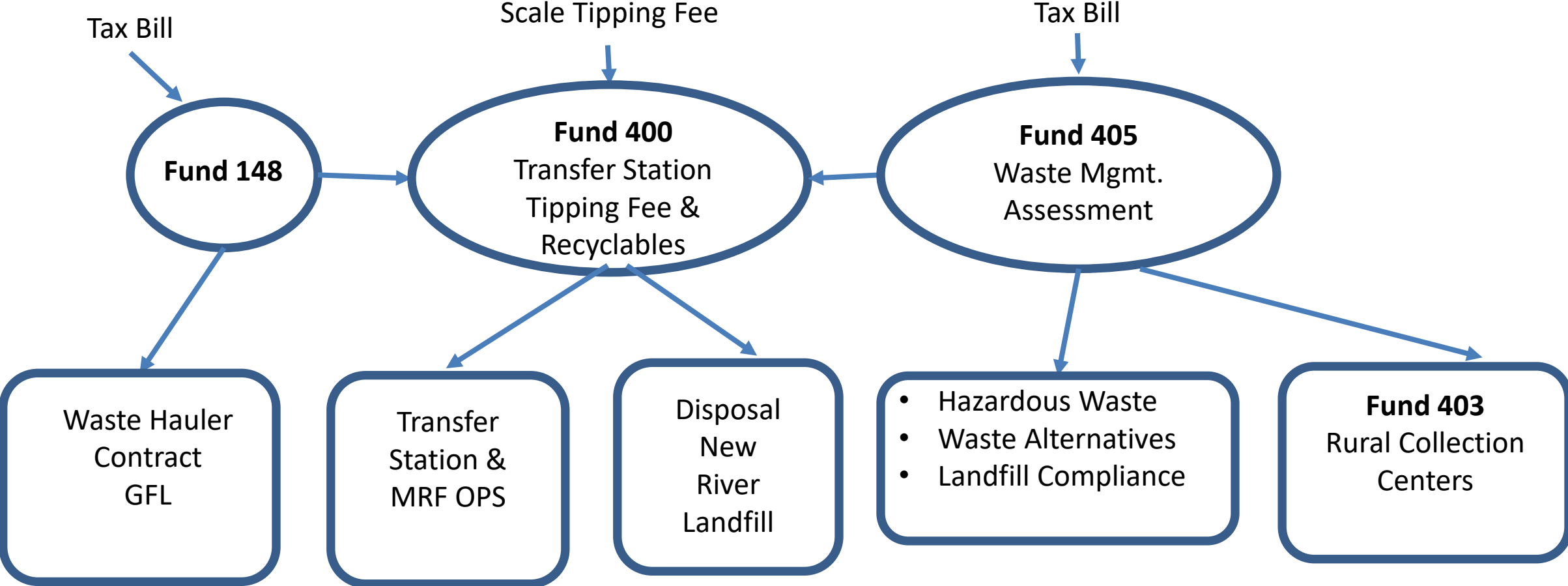
Fund 403 – Rural Collection Center Assessment

Fund 405 – Solid Waste Management Assessment



NON-AD VALOREM ASSESSMENTS				
LEVYING AUTHORITY	PURPOSE OF ASSESSMENT <small>Provided on this notice at request of respective governing boards. Tax Collector will include on November tax notice.</small>	UNITS	RATE	ASSESSMENT
REFUSE 35	Solid Waste	1.00	227.0800	227.08
RESIDENTIAL	Solid Waste	1.00	25.2700	25.27
COUNTY	550 COUNTY FIRE SERVICES 352-337-6101	1		423.09
Alachua County	Stormwater Assessment	1	50	50.00
TOTAL ASSESSMENTS				725.44

Expenditure Accounts



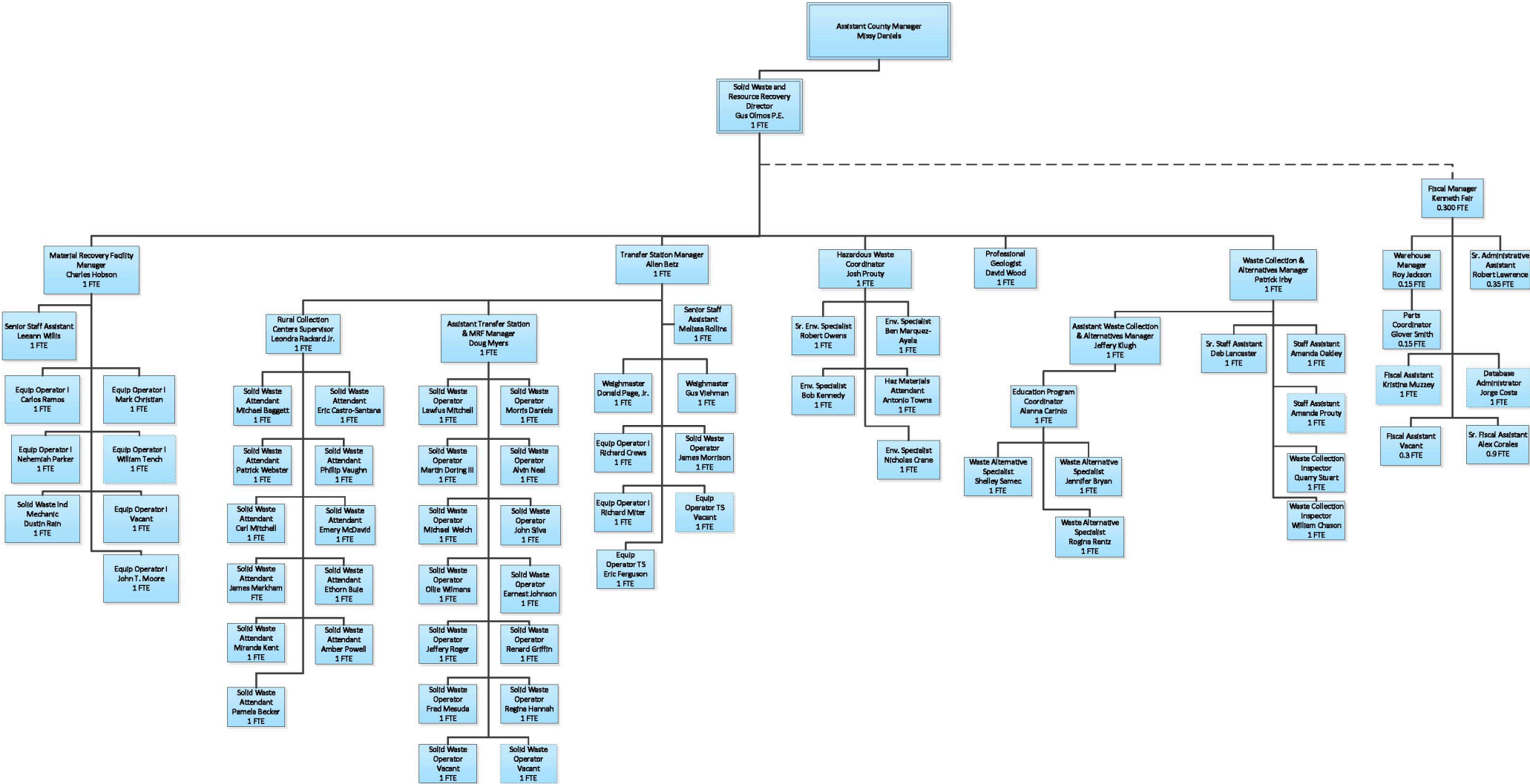
Performance Measures

- Solid Waste hauled to the landfill
- Solid waste generated per capita
- Recycled Materials: Mixed Paper, Cardboard, Aluminum cans, Metal cans, Glass
- Hazardous Materials: Oil, Paint, Electronic Waste
- Outreach Events: Leveda Brown Environmental Park Tours, Tools for Schools, Public Education Events



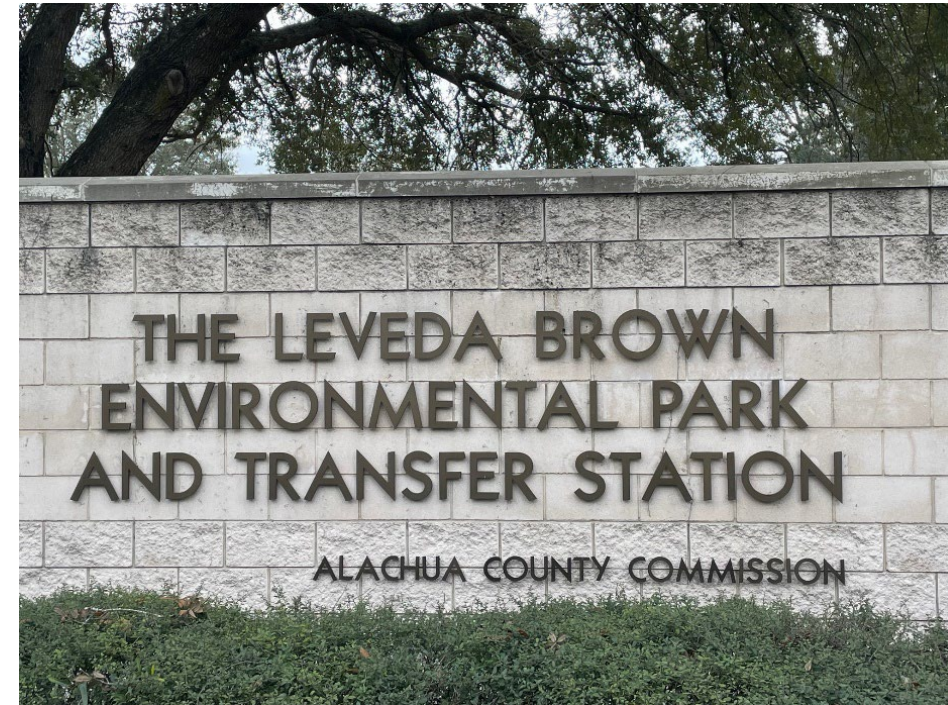
Organizational Chart

FY24 Solid Waste & Resource Recovery Department Org Chart (68.29 FTEs)



Divisions

- Leveda Brown Environmental Park
 - Transfer Station
 - Materials Recovery Facility
 - Hazardous Waste Management
- Rural Collection Centers
- Office of Waste Collection & Alternatives
- Engineering and Compliance Monitoring



Transfer Station

- Residential and commercial solid waste is processed and transported to the New River Regional Landfill in Union County

Next Steps

- Landfill Disposal Agreement
- Transfer Station Roof Replacement
- Pavement Improvements
- Western Transfer Station



Allen Betz, Transfer Station Manager

Doug Myers, Assistant Manager

Materials Recovery Facility

- Facility receives, processes, and markets recyclable commodities. Materials received at this facility come from both residential and commercial sources.
- Alachua County employs a dual-stream recycling system to keep contamination to a minimum.

Next Steps

- Potential upgrades are significantly limited by space constraints in existing facility
- Resurfacing of tipping area



Rural Collection Centers

- Drop off facilities for garbage, recyclables, bulk materials, scrap metal, yard waste, and household hazardous waste
- These sites are for the exclusive use of residential customers, primarily those who do not receive curbside collection service

Next Steps

- Acquisition of Fairbanks Rural Collection Center
- Construction of Rural Collection Center at the Newberry Environmental Park



Hazardous Waste Management

- County-wide system for the proper disposal, reuse, and recycling of hazardous materials, automotive fluids, household chemicals, unwanted pharmaceuticals, waste vegetable oil, latex paint and electronic waste materials generated by households and small businesses.

Next Steps

- Construction of a new Hazardous Waste Management Facility at the EcoLoop



Engineering and Compliance Monitoring

- Permitting and compliance monitoring of County-operated solid waste management facilities, including the County's closed landfills

Next Steps

- Stormwater intrusion at Southwest Landfill
- Repurposing of closed landfills
 - Temporary Disaster Debris Management Site at Northeast Landfill



Waste Collection & Alternatives

Waste Collection

- Monitors and manages the curbside collection contract
- Handles all customer service calls and complaints
- Preparation of non-ad valorem assessments

Waste Alternatives

- Educational branch of the Department
- Tools for Schools

Next Steps

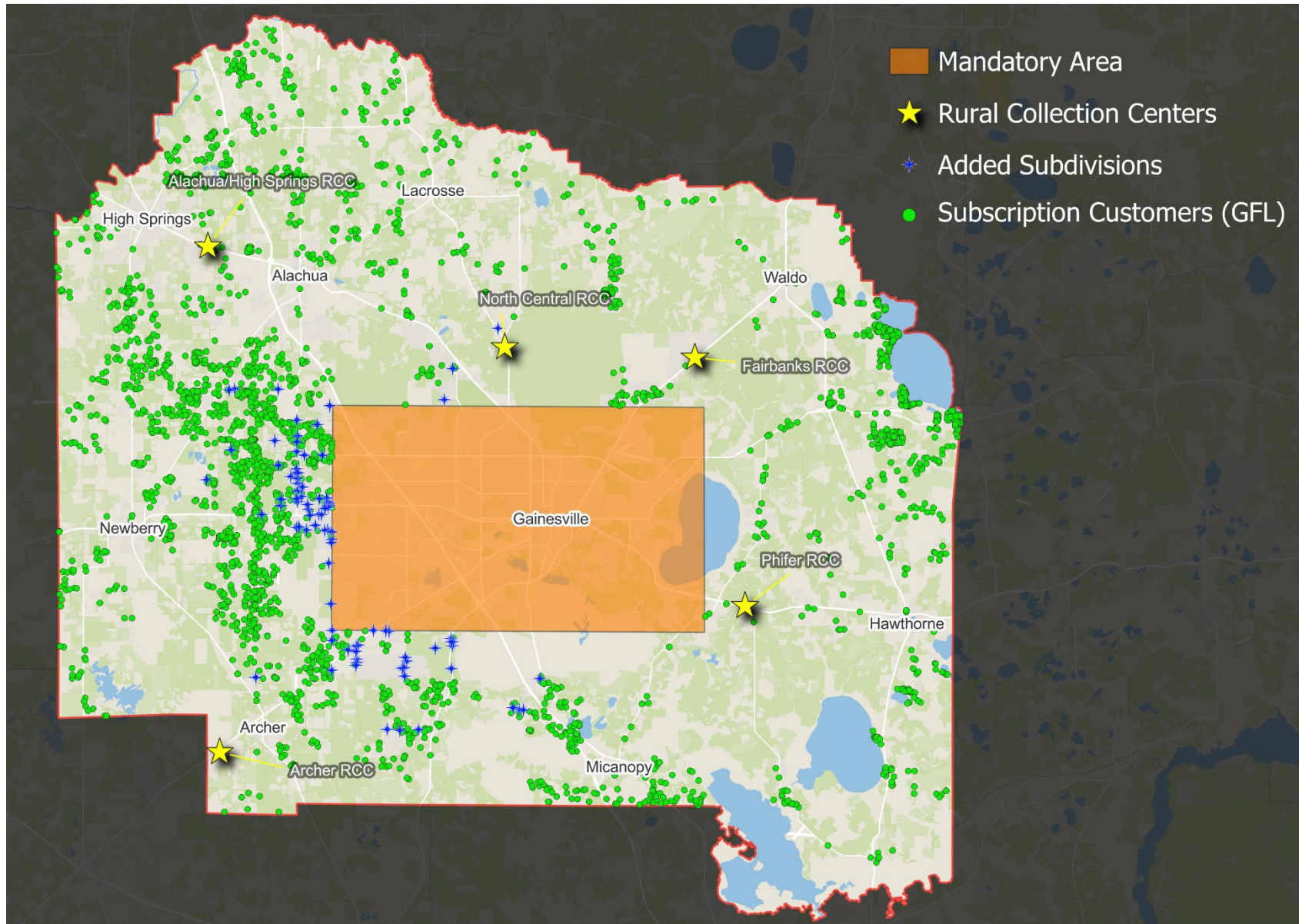
Mandatory Collection Area and Subscription Customers

Patrick Irby, Manager

Jeff Klugh, Assistant Manager



Mandatory Collection Area and Subscription Customers



Disaster Debris Management

- New Request for Proposals
 - Monitoring and Collection Services
 - Joint procurement with municipalities
- Local Resources
 - Request for Proposal requirement
 - Compile a list of local resources
 - Dual collection system



Hazardous Waste Management

- June 11, 2024, BoCC Meeting
 - Estimated cost: \$3.0M
 - Approved \$1.5M for the construction of a new Hazardous Waste Facility at EcoLoop
 - Instructed staff to seek grant funding to fund the rest of the project
- Applied for Environmental Protection Agency Solid Waste Infrastructure for Recycling Grant Program: \$4.2M
- Solid Waste Assessment Increase
 - \$4.00 per house for the next 5 years

Solid Waste Disposal Options

Interlocal Agreement with New River Solid Waste Association

- Expiration Date: December 31, 2028
- Option for 5-year renewal
 - Provide 2-year notice
 - The County shall not be charged a rate that is greater than the lowest rate charged by New River to any of its Member Counties (Baker, Bradford, and Union)
- Disposal Cost Analysis Memo
 - New River provides a competitive disposal fee and combined with the relatively low hauling cost the County is unlikely to find a better rate.
 - Potential alternatives include Trail Ridge (Duval) and Putnam County landfills, however, they do not currently accept out-of-County waste

Staff Recommendations

Authorize staff to initiate negotiations with the New River Solid Waste Association to extend the existing agreement for an additional 5-years

Questions

