

RESOLUTION 25XX •

A RESOLUTION BY THE BOARD OF COUNTY COMMISSIONERS OF ALACHUA COUNTY, FLORIDA, ACCEPTING THE DONATION OF REAL PROPERTY; AUTHORIZING THE EXECUTION OF DOCUMENTS TO EFFECTUATE THE CONVEYANCE; DESIGNATING THE PROPERTY AS A PRESERVE UNDER THE ALACHUA COUNTY FOREVER PROGRAM; AND PROVIDING AN EFFECTIVE DATE.

WHEREAS, Section 125.01, Florida Statutes, grants to counties the power to provide parks, preserves, playgrounds, recreation areas, libraries, museums, historical commissions, and other recreation and cultural facilities and programs; and

WHEREAS, Said Statute authorizes the purchase or lease and sell or exchange of real property as necessary or incident to carrying out such powers enumerated; and

WHEREAS, Ms. Kathryn Williams owns approximately 5 acres of real property in Alachua County shown in Exhibit “A,” attached hereto and incorporated by reference (the “Property”); and

WHEREAS, Ms. Williams contacted Alachua County on April 26, 2024 stating her desire to donate her Property for the purpose of its use as an Alachua County Forever Preserve; and

WHEREAS, Ms. Williams wishes to donate the property in honor of her parents, J. Warren Rauscher (1916-2005) and Eleanor G. Rauscher (1916-2007); and

WHEREAS, the Board of County Commissioners placed the property on the Active Acquisition List on August 13, 2024, pursuant to the process prescribed in BOCC Resolution 22-066; and

WHEREAS, the donation has been reviewed pursuant to the Alachua County Donation Policy and received a positive recommendation from the Donation Acceptance Committee.

NOW THEREFORE, BE IT RESOLVED BY THE BOARD OF COUNTY COMMISSIONERS OF ALACHUA COUNTY, FLORIDA;

1. The Board finds, determines, and declares that the recitals in the preamble are true and correct, and hereby incorporates them by reference.
2. The Board approves the Budget Amendment attached hereto as Exhibit "B".
3. The County Manager is authorized to effect expenditure of funds for due diligence and associated closing costs as may be necessary to examine the title and physical condition of the Property.
4. That the Board authorizes the acceptance of a deed of gift to the Property at the discretion of the County Manager after review of the due diligence reports.
5. That the Chair is authorized to execute any documents, approved by the County Attorney, needed to complete this conveyance.
6. Upon transfer of title of the property to Alachua County, the Property shall be designated as a "Preserve" under the Alachua County Forever program for the protection and management of water resources and wildlife habitats.
7. This resolution shall take effect immediately upon its adoption.

DULY ADOPTED in regular session, this _____ day of _____, 2025

**BOARD OF COUNTY
COMMISSIONERS OF ALACHUA
COUNTY, FLORIDA**

ATTEST:

J.K. "Jess" Irby, Esq.
Clerk of Court

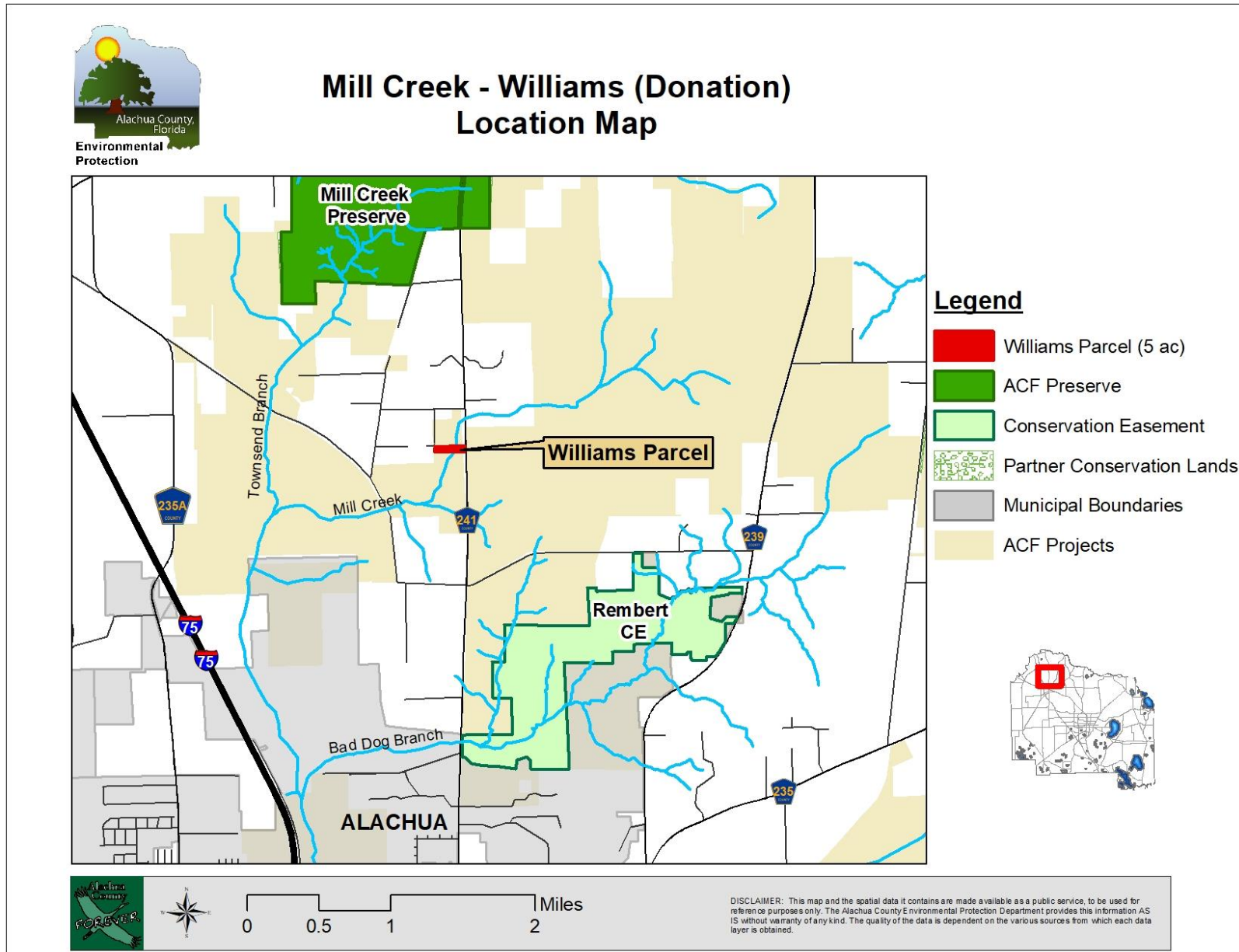
(SEAL)

By: _____
Chair

APPROVED AS TO FORM

Alachua County Attorney

Exhibit "A"



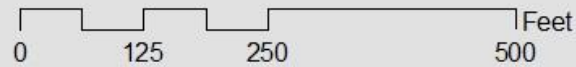


Mill Creek - Williams (Donation) Parcel Map



Legend

- Williams Parcel (5 ac)
- Alachua County Creeks



DISCLAIMER: This map and the spatial data it contains are made available as a public service, to be used for reference purposes only. The Alachua County Environmental Protection Department provides this information AS IS without warranty of any kind. The quality of the data is dependent on the various sources from which each data layer is obtained.

Department	Number	Journal Type	Sub Ledger	G/L Date	Description	Source	Reference	Reclassification	Journal Type	
5500 - Environmental Protection Dept	2025-00001431	BA	GL	02/18/2025	DIR - Land Acquisition - Mill Creek - Williams					
	<i>G/L Date</i>	<i>G/L Account Number</i>	<i>Account Description</i>		<i>Description</i>	<i>Source</i>		<i>Increase Amount</i>	<i>Decrease Amount</i>	
	02/18/2025	021.41.4160.537.61.00	Land Land		DIR - Land Acquisition - Mill Creek - Williams			.00	14,190.00	
	02/18/2025	021.41.4160.537.61.00	Land Land		DIR - Land Acquisition - Mill Creek - Williams			14,190.00	.00	
			Project: 6194101-Mill Creek-Williams - WSPP - Land Acquisition, WSPP - Mill Creek, Donated - 5 acres							
						Number of Entries: 2		<u>\$14,190.00</u>	<u>\$14,190.00</u>	