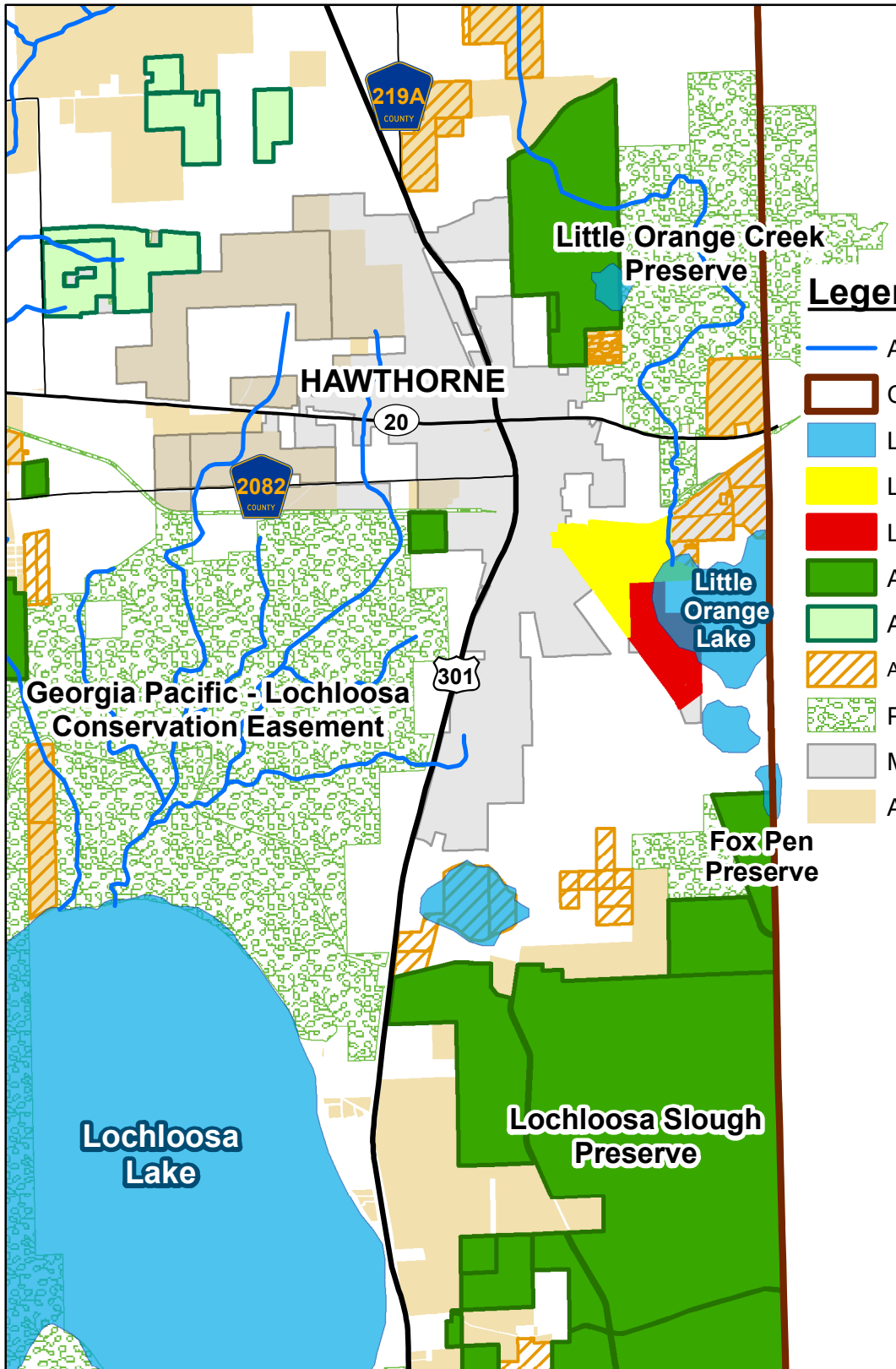


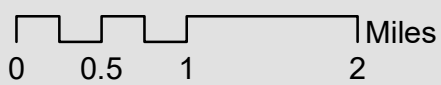
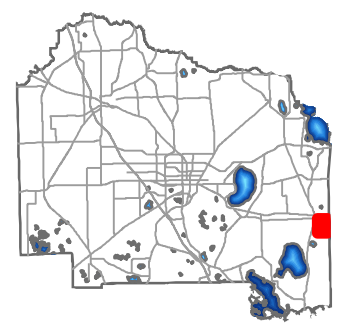


Lochloosa Creek Flatwoods - Little Orange Lake Investors, LLC Location Map



Legend

- Alachua County Creeks
- County Boundary
- Lakes
- Lakes of Hawthorne, LLC (201.32 ac)
- Little Orange Lake Investors (177.64 ac)
- ACF Preserve
- ACF Conservation Easement
- ACF ACTIVE ACQUISITION LIST
- Partner Conservation Lands
- Municipal Boundaries
- ACF Projects




DISCLAIMER: This map and the spatial data it contains are made available as a public service, to be used for reference purposes only. The Alachua County Environmental Protection Department provides this information AS IS without warranty of any kind. The quality of the data is dependent on the various sources from which each data layer is obtained.



Lochloosa Creek Flatwoods Little Orange Lake Investors, LLC Parcel Map

Lakes of Hawthorne, LLC

Legend

 Little Orange Lake Investors (177.64 ac)

 Lakes of Hawthorne, LLC (201.32 ac)

Roadways

 Public, County Maintained

Little Orange Lake

19954-000-000

HOLDEN PARK RD

19960-001-000

19959-008-000

19959-005-001

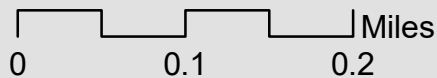
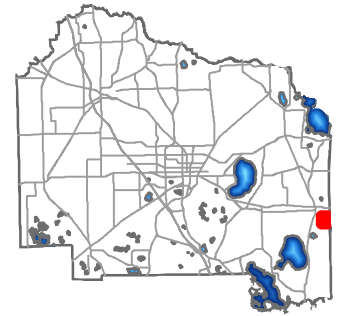
19959-006-000

19959-000-000

19959-007-000

19959-004-000

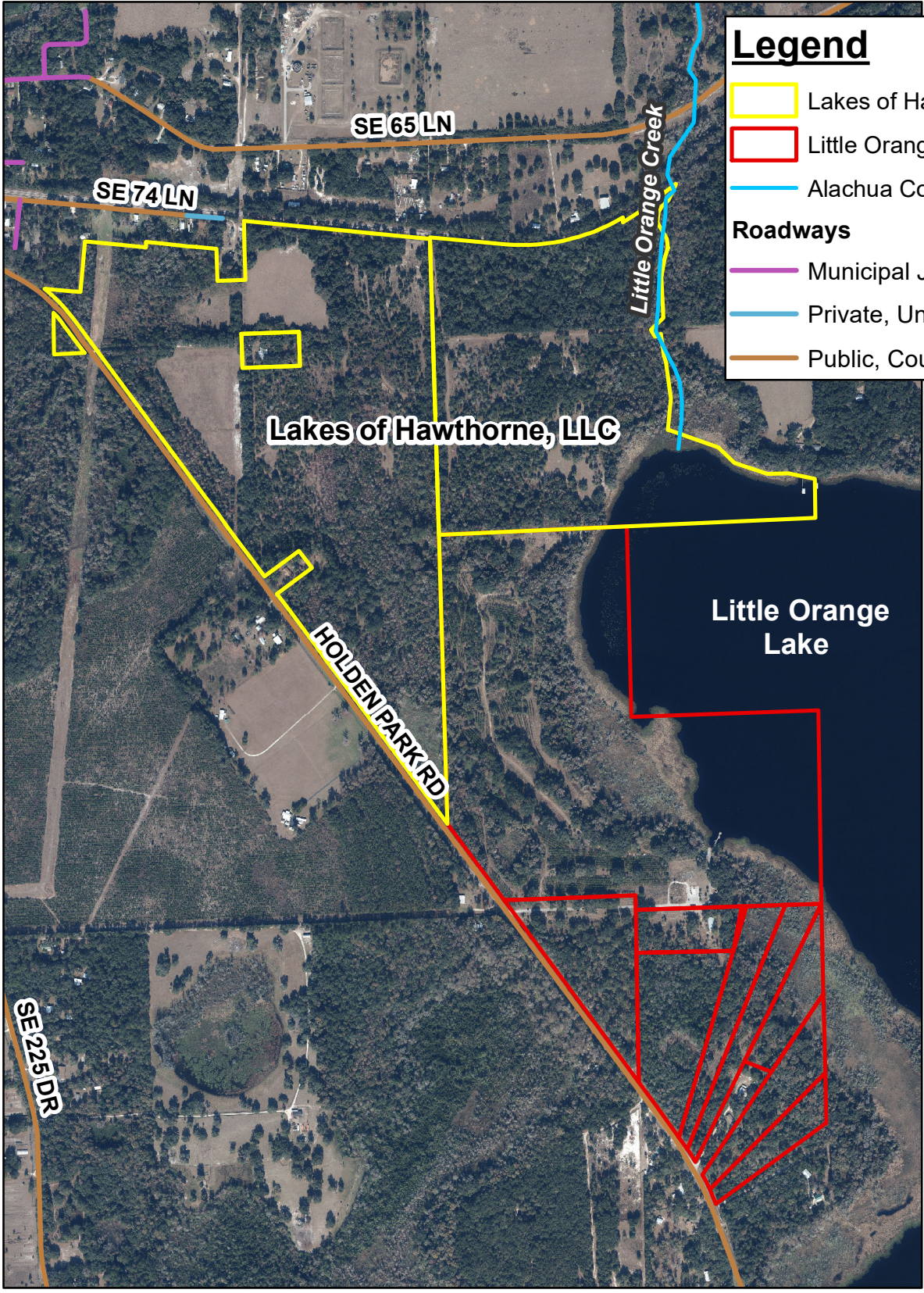
19959-003-000



DISCLAIMER: This map and the spatial data it contains are made available as a public service, to be used for reference purposes only. The Alachua County Environmental Protection Department provides this information AS IS without warranty of any kind. The quality of the data is dependent on the various sources from which each data layer is obtained.

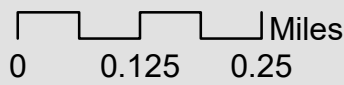
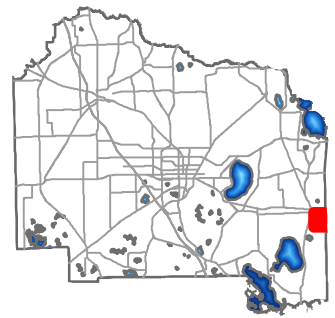


Lochloosa Creek Flatwoods - Little Orange Lake Investors, LLC and Lakes of Hawthorne, LLC



Legend

- Lakes of Hawthorne, LLC (201.32 ac)
 - Little Orange Lake Investors (177.64 ac)
 - Alachua County Creeks
- Roadways**
- Municipal Jurisdiction
 - Private, Unincorporated
 - Public, County Maintained



DISCLAIMER: This map and the spatial data it contains are made available as a public service, to be used for reference purposes only. The Alachua County Environmental Protection Department provides this information AS IS without warranty of any kind. The quality of the data is dependent on the various sources from which each data layer is obtained.