



**Alachua County  
Land Conservation Board**

**FY 2024 Accomplishments  
& FY 2025 Workplan**

*Where Nature and  
Culture Meet*

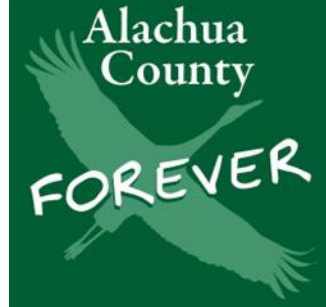


# Land Conservation Board (LCB)



## LCB Mission Statement:

*The Land Conservation Board will recommend lands for conservation to the Alachua County Board of County Commissioners (BoCC) under the Alachua County Forever Program (ACF) and advise the BoCC on the stewardship of those acquired lands.*



## Primary Activities:

- ❖ Receive presentations on nominated lands from County staff
- ❖ Assess whether nominated lands meet the ACF mission and/or should be prioritized for conservation
- ❖ Receive preserve stewardship and land acquisition status updates
- ❖ Make comments on preserve management plans



# Land Conservation Board (LCB)



## Meets Monthly

- ❖ Generally, fourth Thursday of the month
- ❖ Location:  
Alachua County Admin. Building  
12 SE 1st Street, Second Floor,  
Grace Knight Conference Room
- ❖ Time: 6:00 pm



# FY 2024 LCB Members



## 11 Members + 1 Alternate

- Brian Block (Chair)
- Amy Schwarzer (Vice Chair)
- Kristen Young (Secretary)
- B. J. Bukata
- Bruce Blackwell
- Dewayne Baines
- Paul Lyrene
- Kate Lee (Alternate)
- Jennifer Rocca (Beginning Jan. 2024)
- Ed Hunter (Beginning Jan. 2024)
- Tom Mirti (Beginning March 2024)
- Lee Cook (Beginning April 2024)

- Jason Teisinger (Through Dec. 2023)
- Mark Hostetler (Through Dec. 2023)
- Russ Weber (Through Feb. 2024)



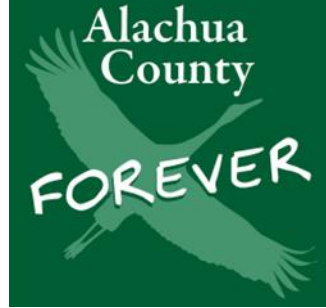
- Emily Uhlmann (County Staff Liaison)

# Major Accomplishments in FY 24



## Nominated Property Evaluations:

- ❖ 24 property nominations reviewed by LCB
  - ❖ 21 nominated properties added to the Priority Pool
  - ❖ 21 Priority Pool properties added to the Active Acquisition List



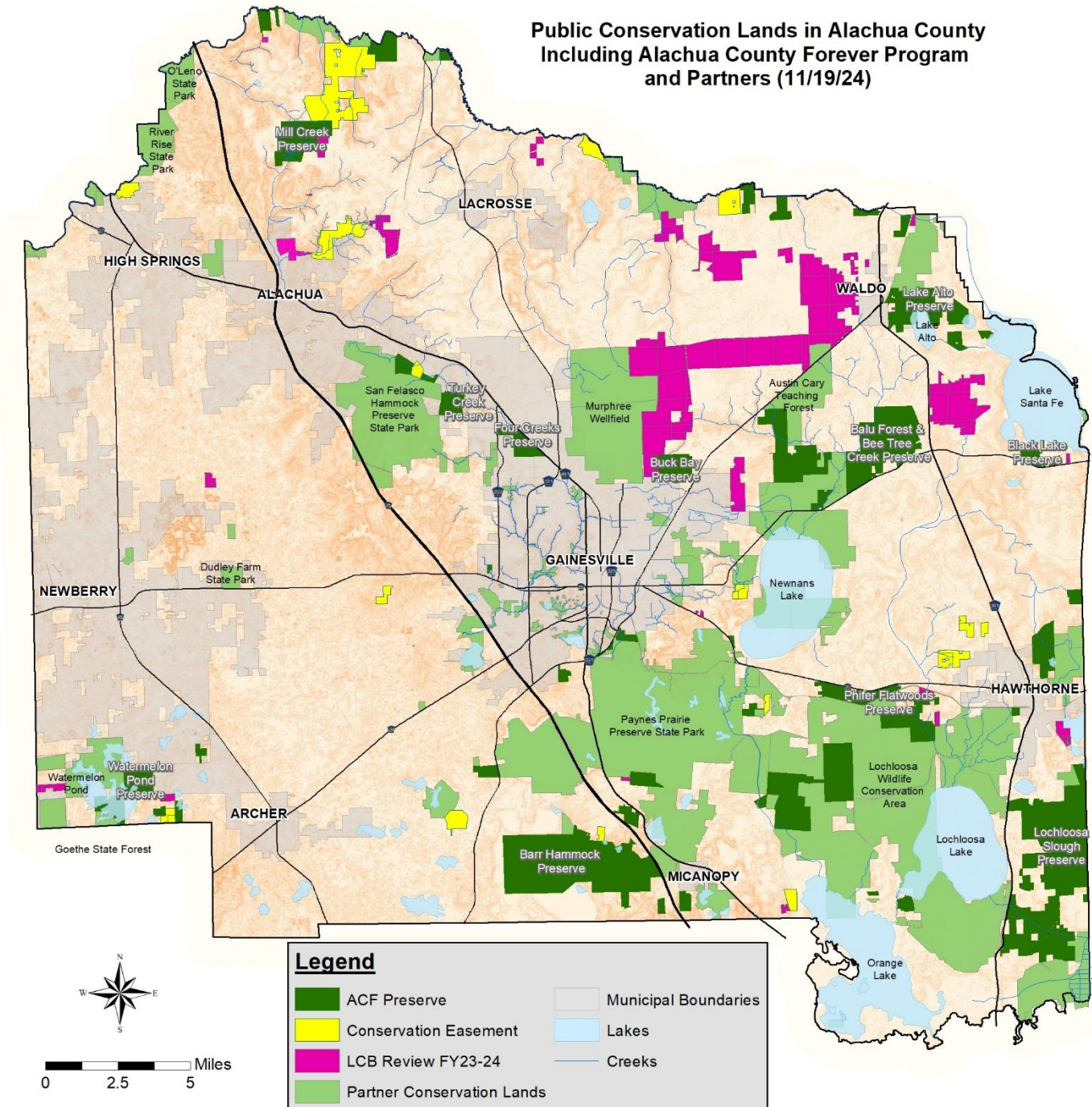
## ACF Land Acquisitions:

- ❖ 8 projects were acquired totaling  $\pm$  1,449 acres

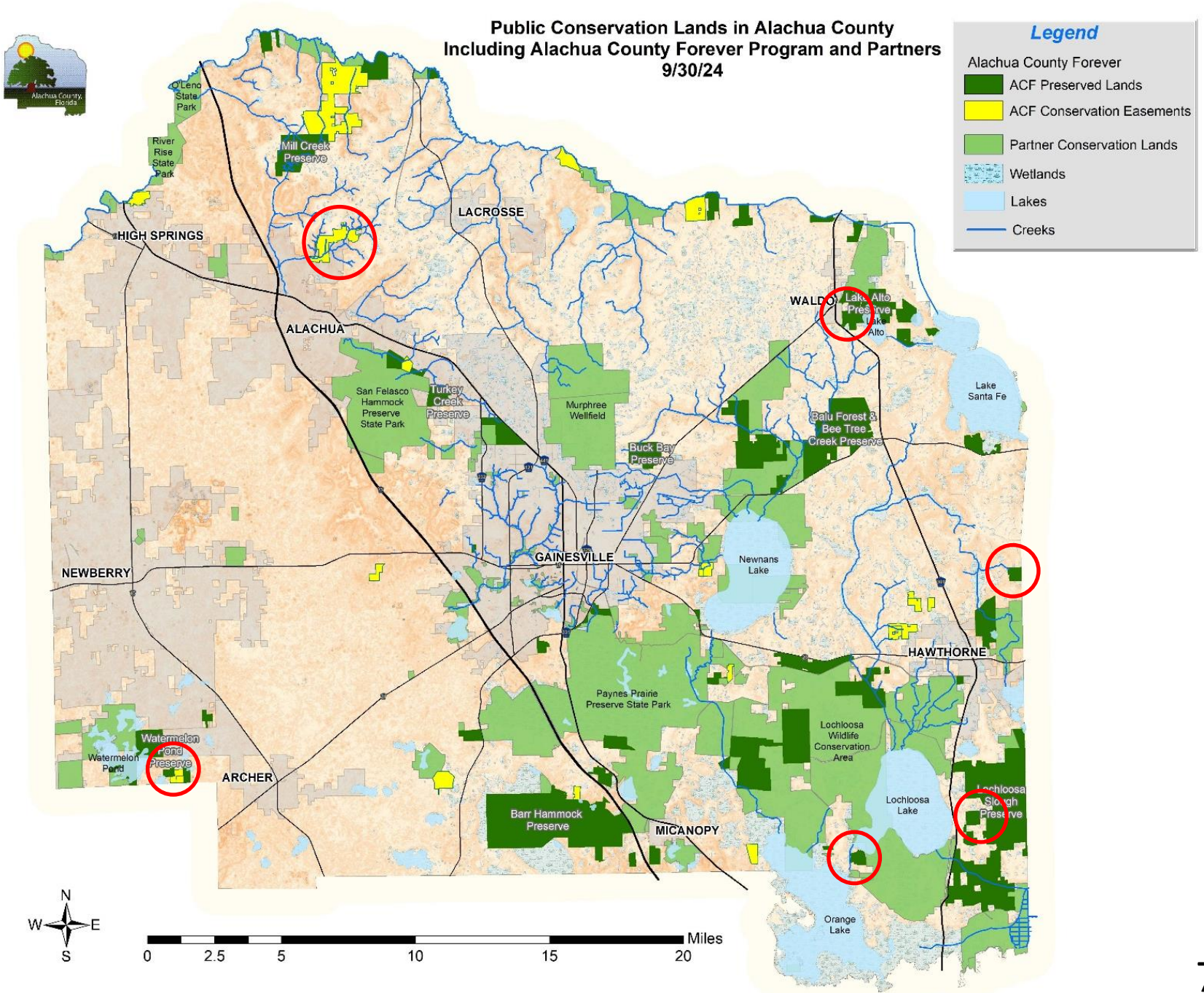


# Nominated Lands FY 2024

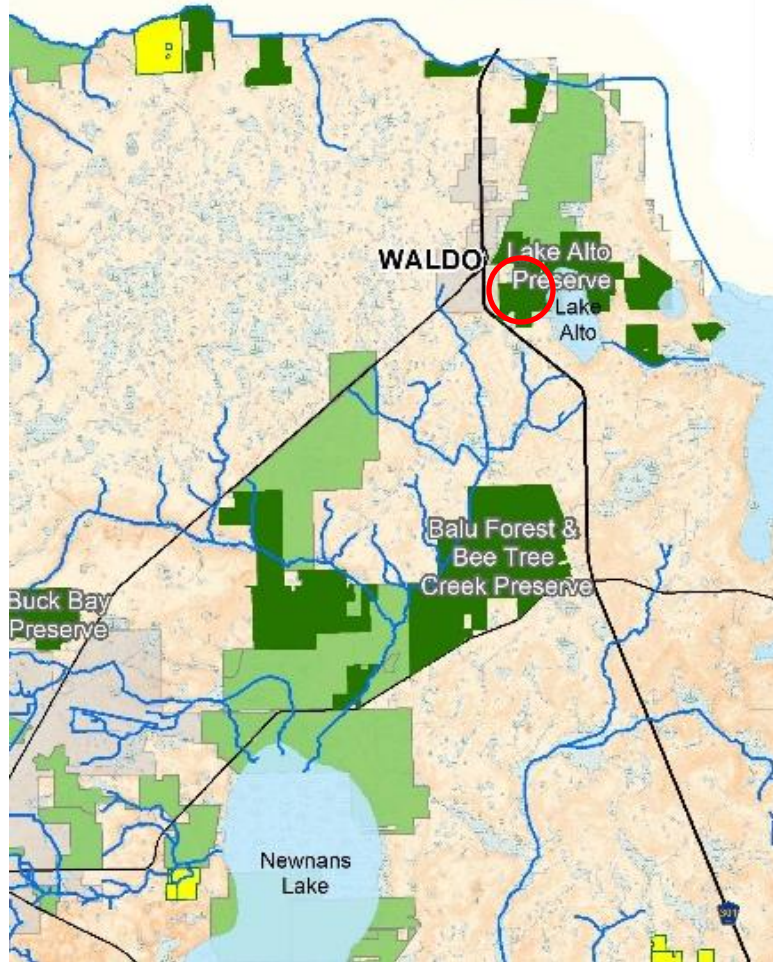
Public Conservation Lands in Alachua County  
Including Alachua County Forever Program  
and Partners (11/19/24)



# Acquired Lands FY 2024



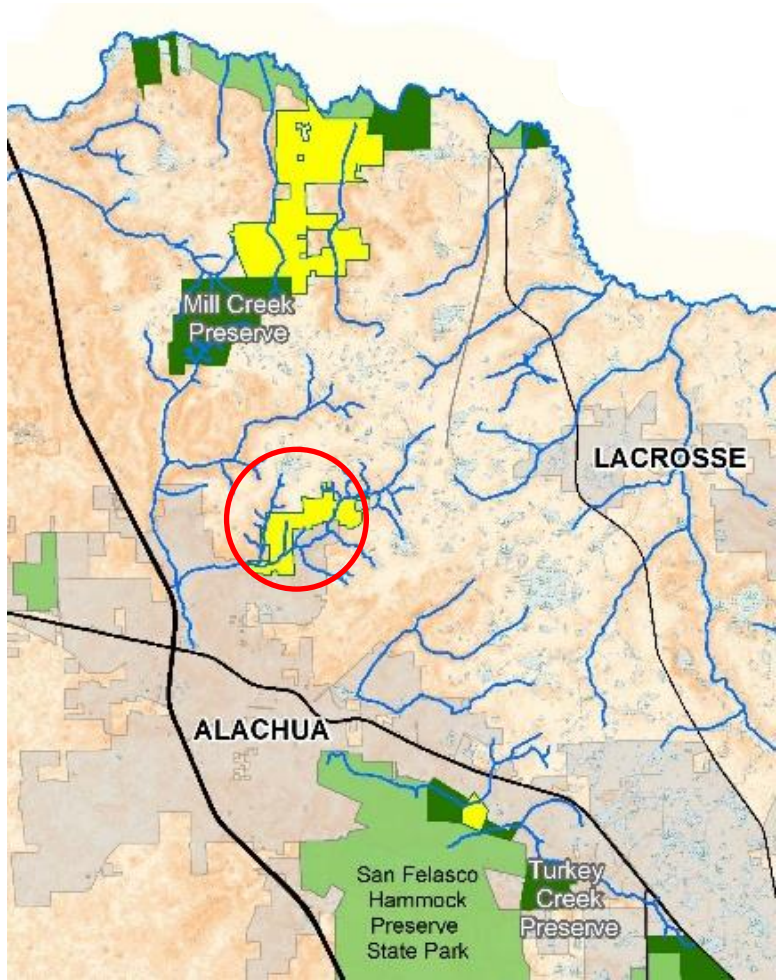
# Property Acquisition: Lake Santa Fe – Dinh



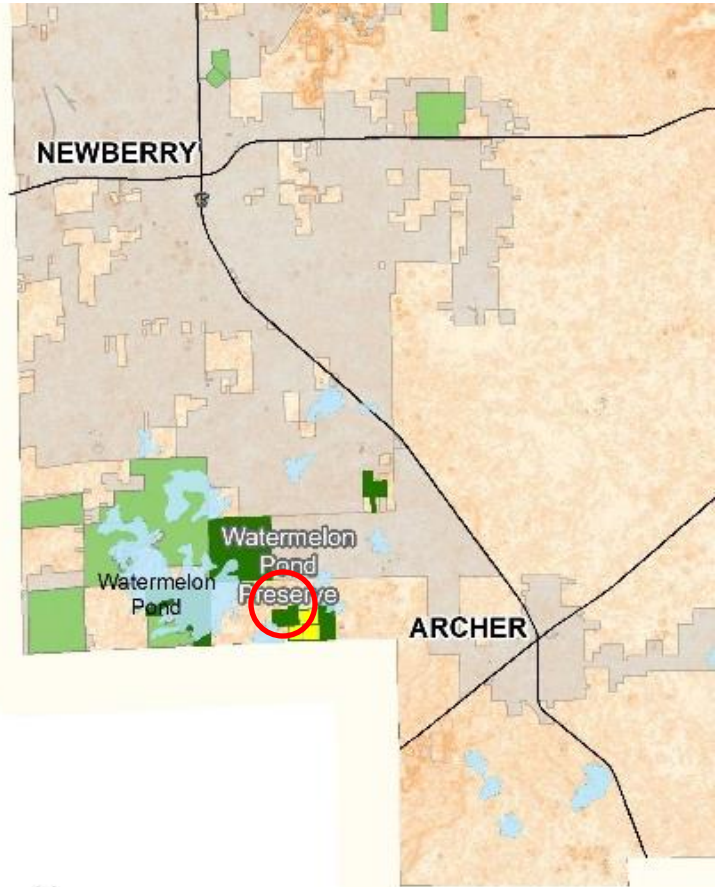


# Conservation Easement Acquisition:

## Mill Creek – Rembert

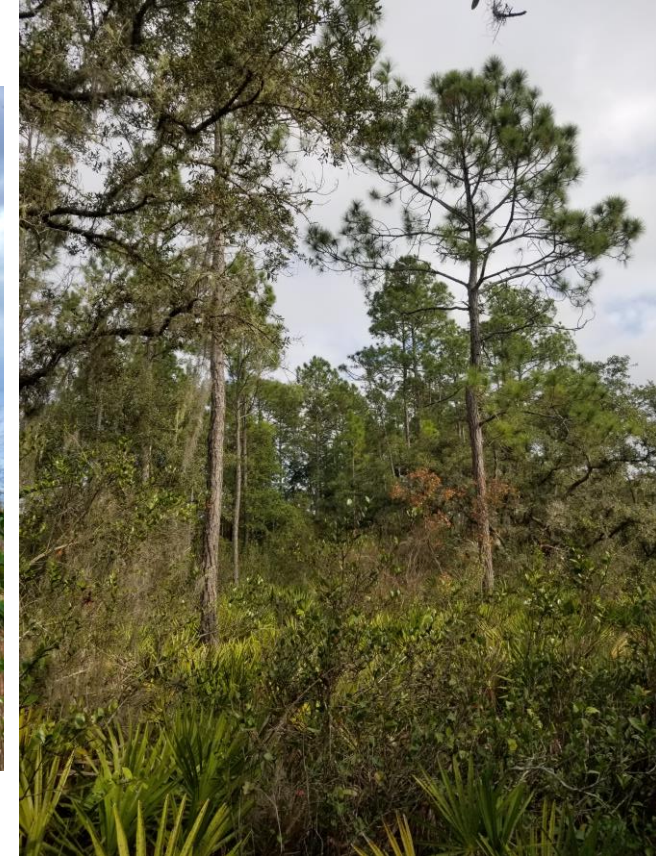
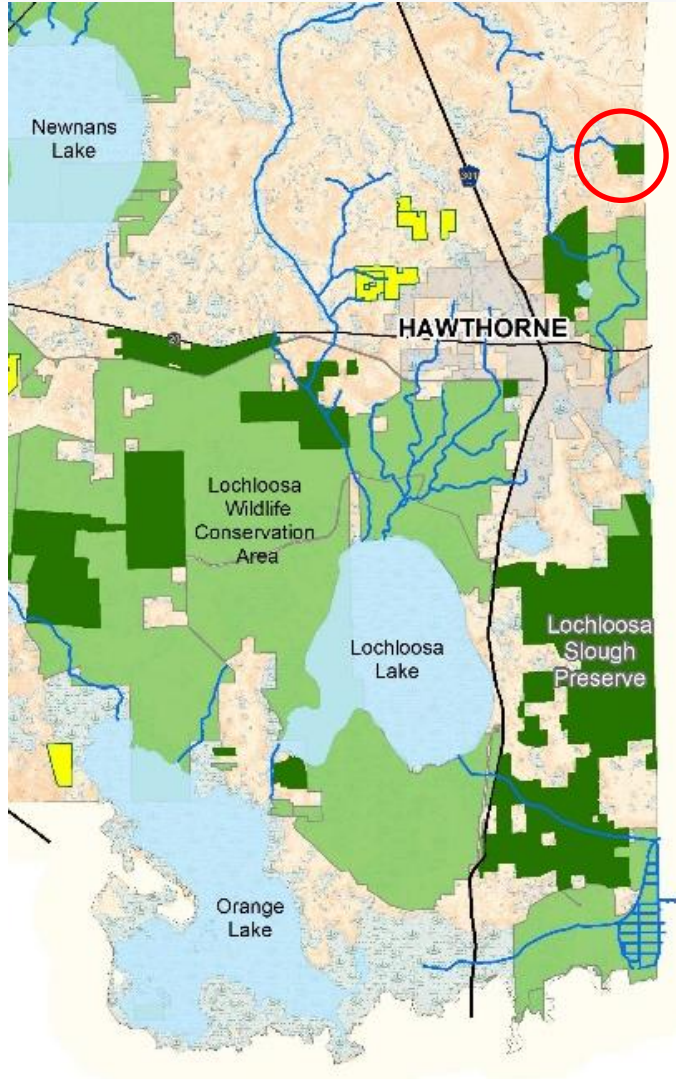


# Property Acquisition: Watermelon Pond – Sheffield

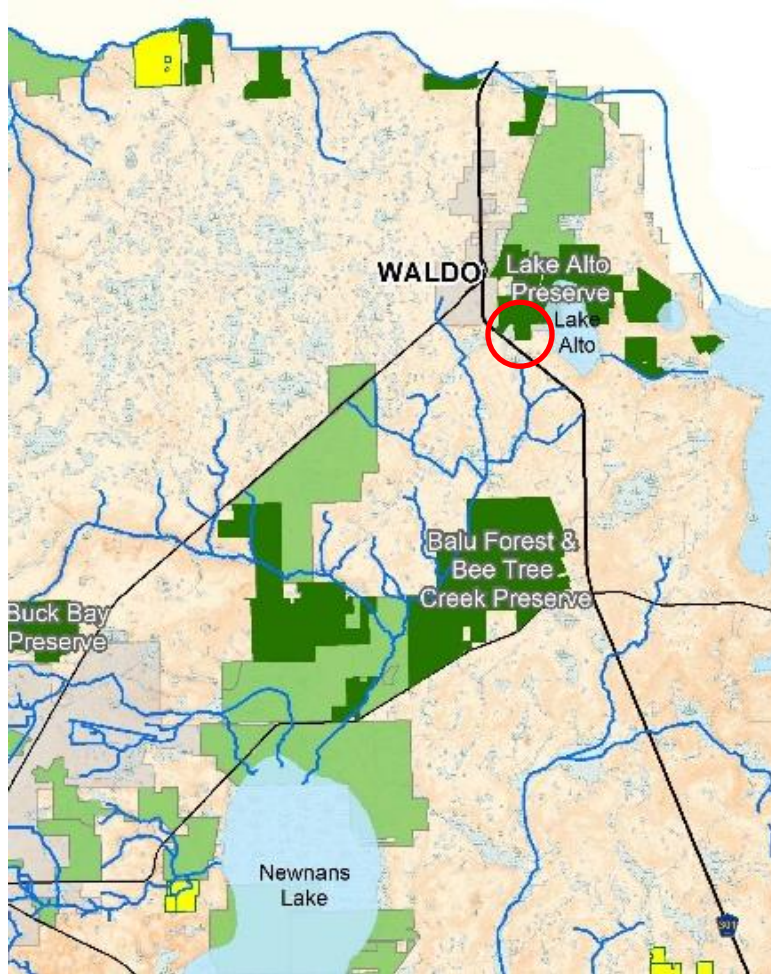


# Property Acquisition:

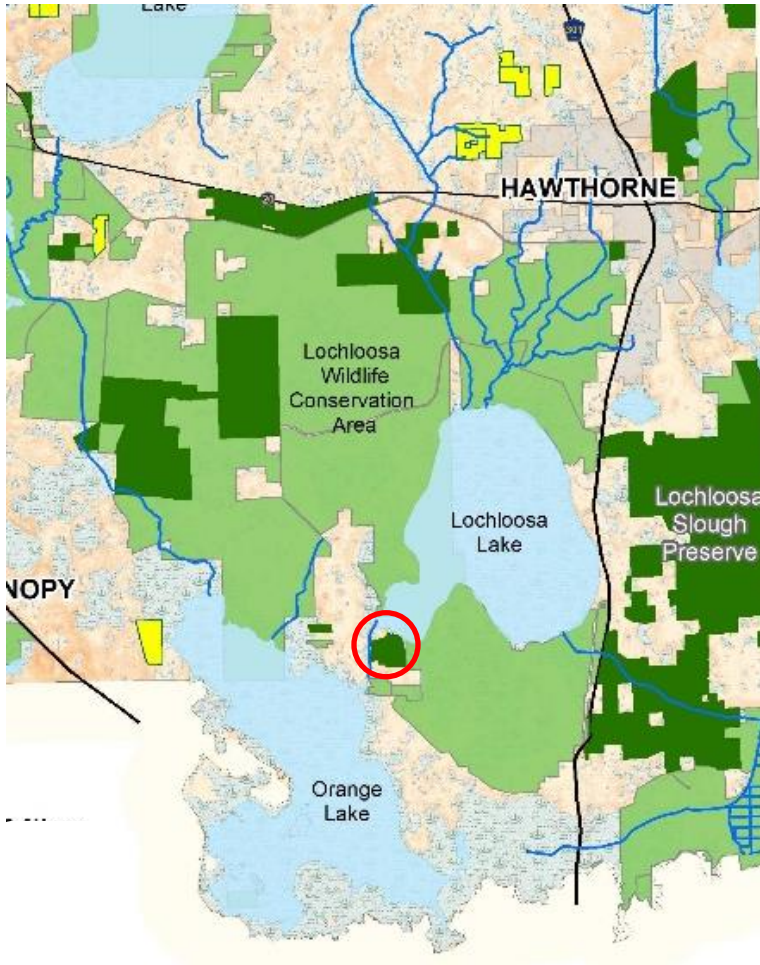
## Lochloosa Creek Flatwoods – Sherouse



# Property Acquisition: Lake Santa Fe – Winchester

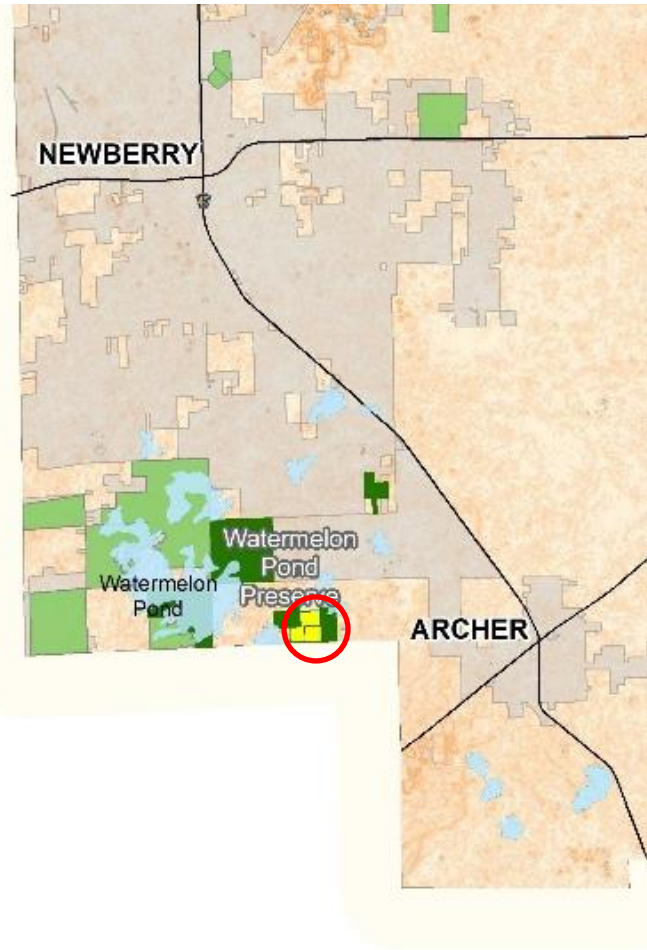


# Property Acquisition: Lochloosa Connector – Rimes



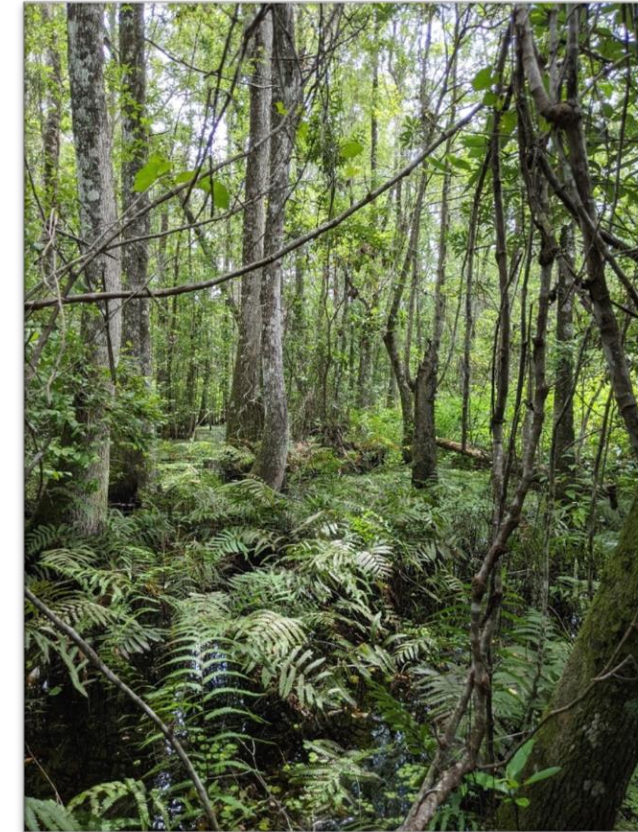
# Conservation Easement Acquisition:

## Watermelon Pond – Elliott



# Property Acquisition:

## Lochloosa Slough – Jackson Heirs



# Goals & Objectives for FY 2025



- ❖ Evaluate nominations to the ACF Program for acquisition with: Wild Spaces and Public Places Surtax funds, donations, partnerships, and grants.
- ❖ Schedule meetings on a monthly basis, with special meetings and workshops scheduled as needed.
- ❖ Receive quarterly preserve stewardship updates from staff regarding accomplishments on County preserves
- ❖ Review land stewardship issues raised by the public, BoCC, or staff, and address any other BoCC requests.



DISCOVER



1824 – 2024

ALACHUA COUNTY  
BICENTENNIAL

**Thank you for  
supporting the Land  
Conservation Board!**



*Where Nature and  
Culture Meet*

