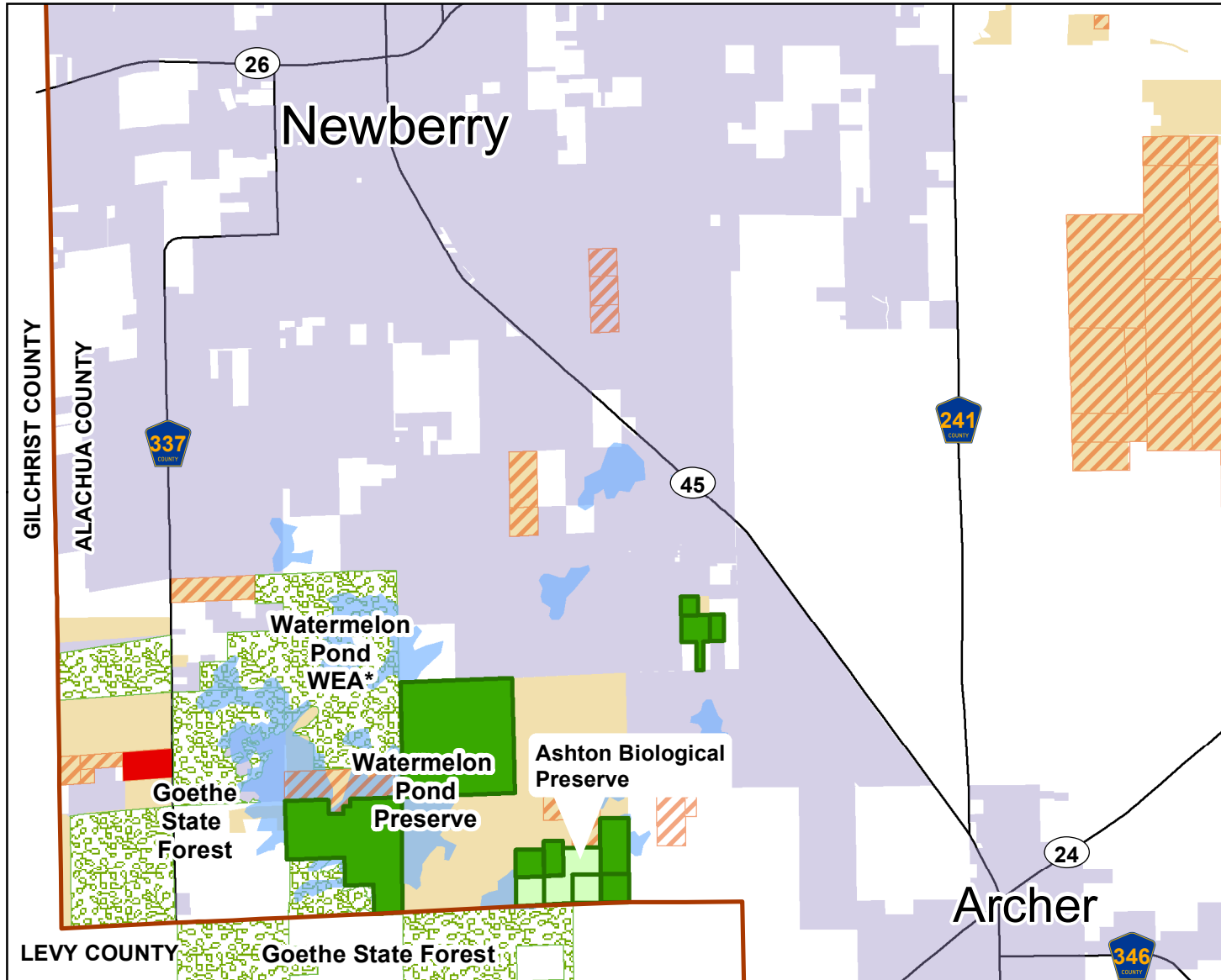
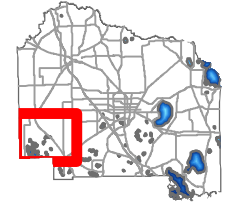











Watermelon Pond - Dumford & Palmer Location Map



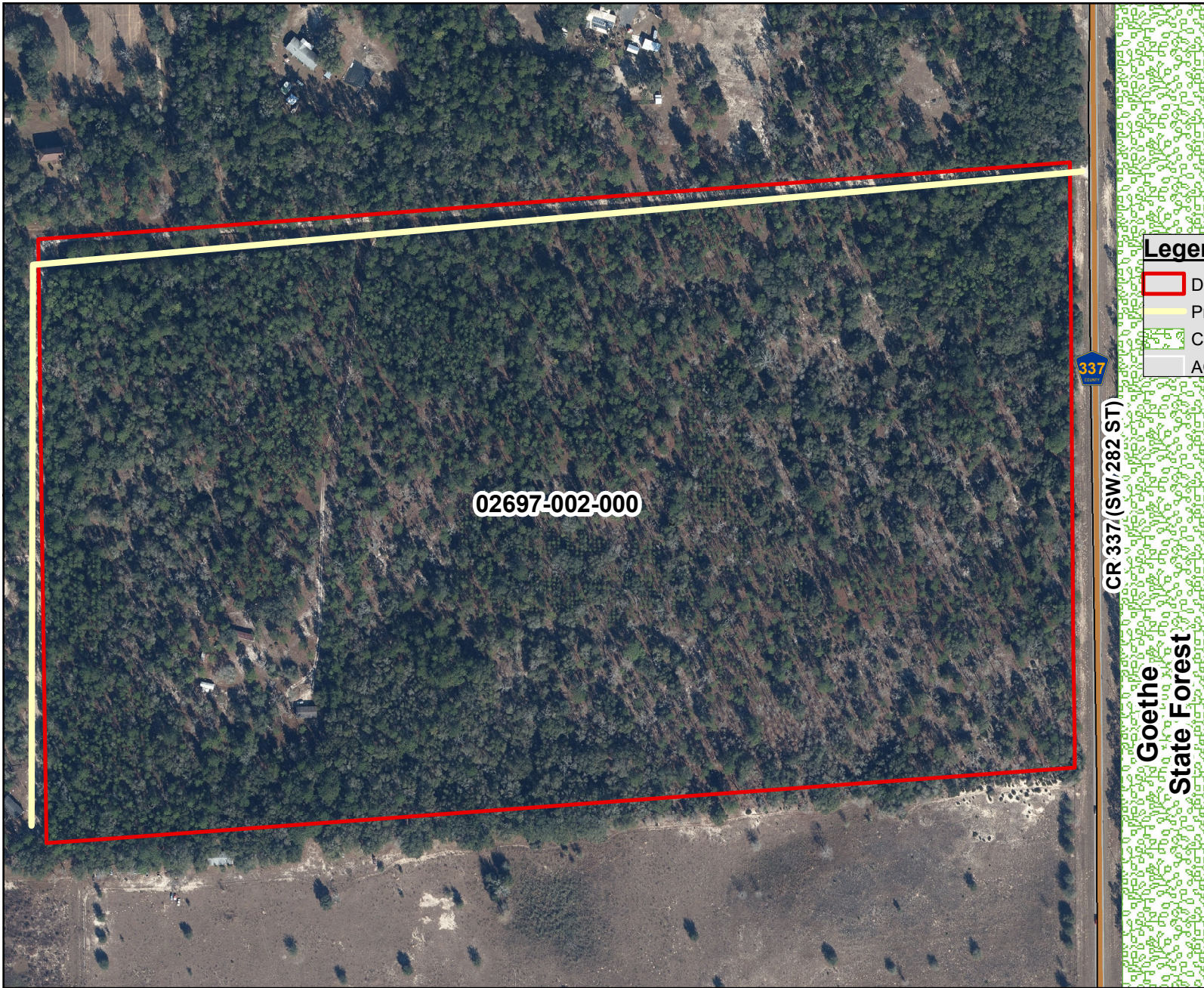
Legend

-  Dumford & Palmer (68.5 ac)
-  ACF Preserve
-  Conservation Easement
-  Active Acquisition
-  Lakes
-  Partner Conservation Lands
-  ACF Projects
-  Major Road
-  County Boundary

*WEA = Wildlife
Environmental Area

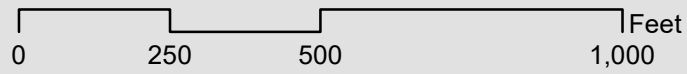
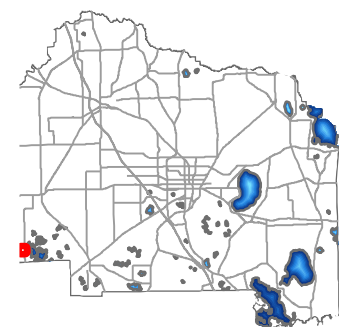


Watermelon Pond - Dumford and Palmer Parcel Map



Legend

- Dumford & Palmer (68.5 ac)
- Private Neighborhood Access Road
- Conservation Lands
- ACPA Parcels

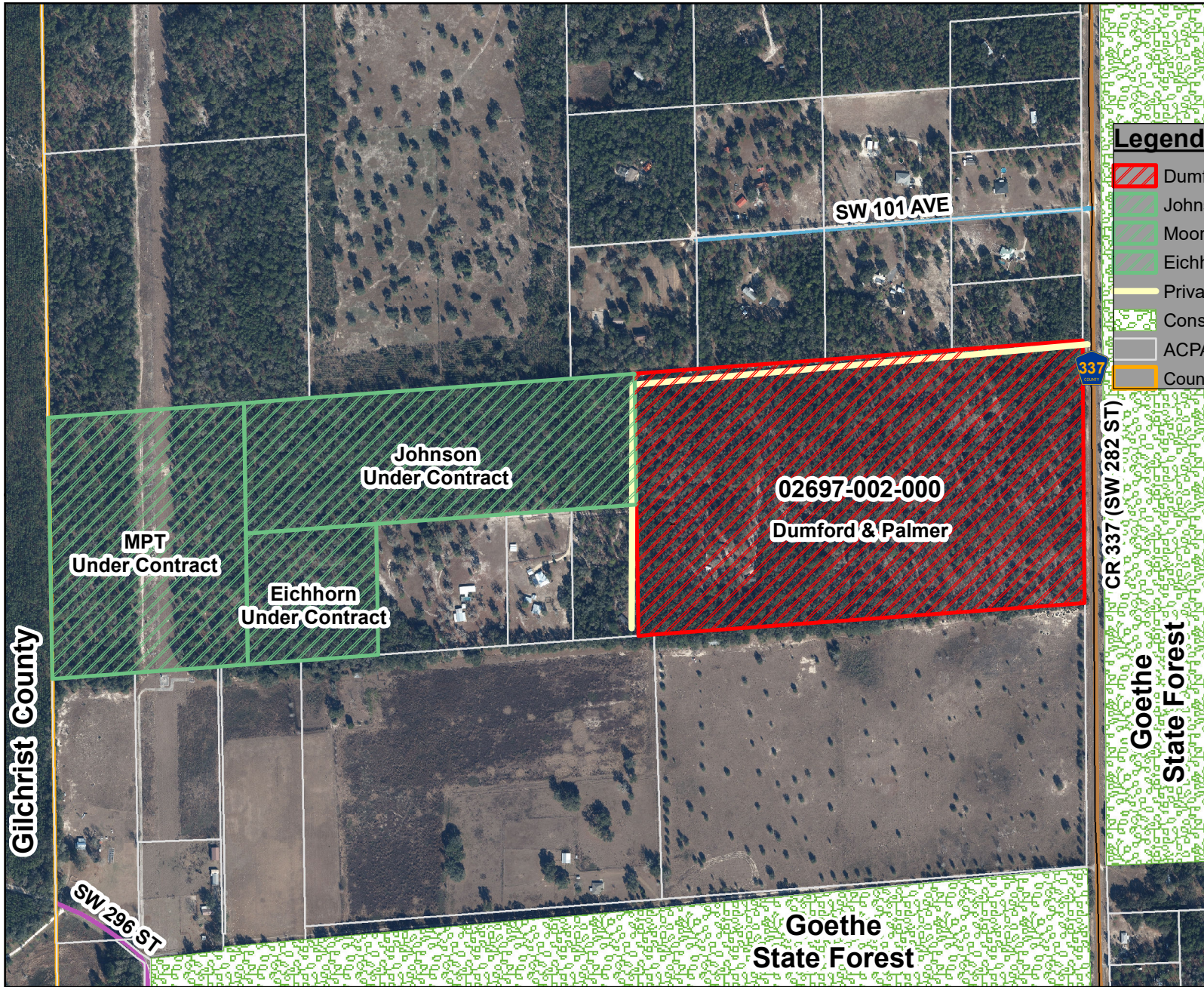


DISCLAIMER: This map and the spatial data it contains are made available as a public service, to be used for reference purposes only. The Alachua County Environmental Protection Department provides this information AS IS without warranty of any kind. The quality of the data is dependent on the various sources from which each data layer is obtained.

Watermelon Pond - Dumford and Palmer Surrounding Parcels Map

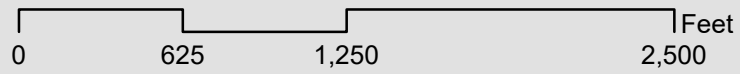
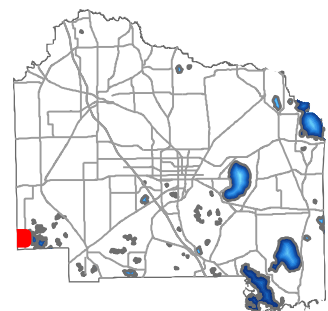


Environmental Protection



Legend

- Dumford & Palmer (68.5 ac)
- Johnson Parcel (30 ac.)
- Moore-Purcell-Trammell Parcel (30 ac.)
- Eichhorn Parcel (10 ac.)
- Private Neighborhood Access Road
- Conservation Lands
- ACPA Parcels
- County Boundary



DISCLAIMER: This map and the spatial data it contains are made available as a public service, to be used for reference purposes only. The Alachua County Environmental Protection Department provides this information AS IS without warranty of any kind. The quality of the data is dependent on the various sources from which each data layer is obtained.