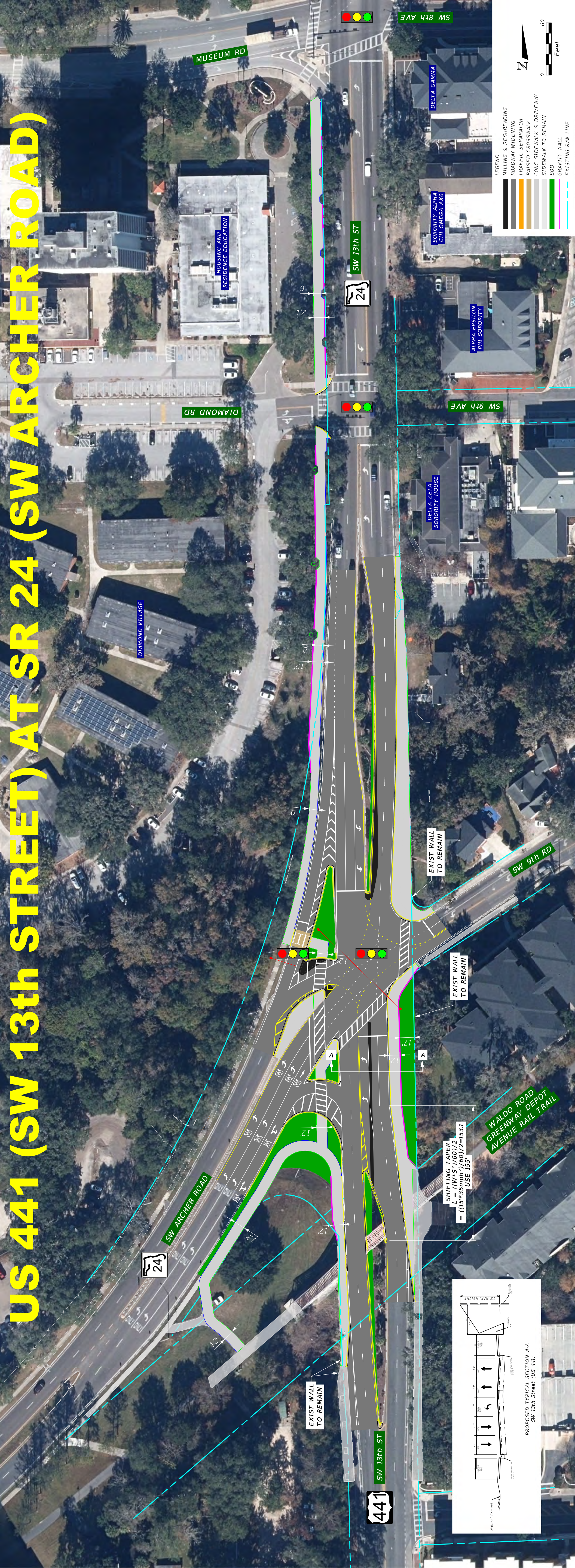




## **VIII. Information Item D**

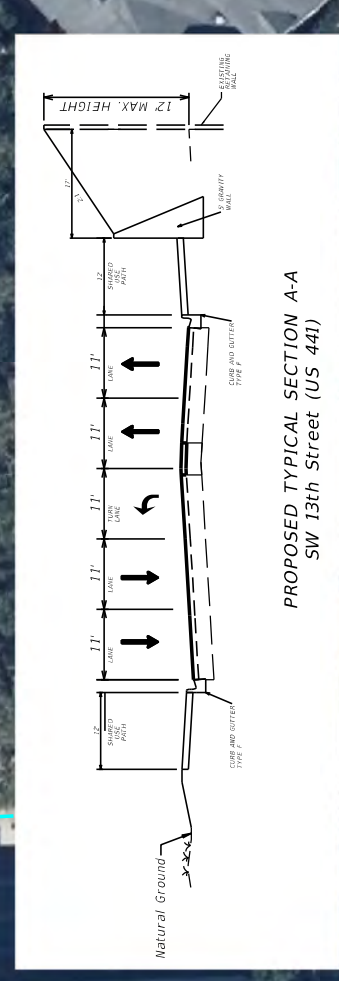


# US 441 (SW 13th Street) at SR 24 (SW Archer Road)



$$\text{SHIFTING TAPER} \\ L = \frac{(W \cdot S^2)}{(60)^2} / 2 \\ = \frac{(15 \cdot 35^2)}{(60)^2} / 2 = 1531 \\ \text{USE } 155'$$

WALDO ROAD  
GREENWAY DEPOT  
AVENUE RAIL TRAIL



PROPOSED TYPICAL SECTION A-A  
SW 13th Street (US 441)