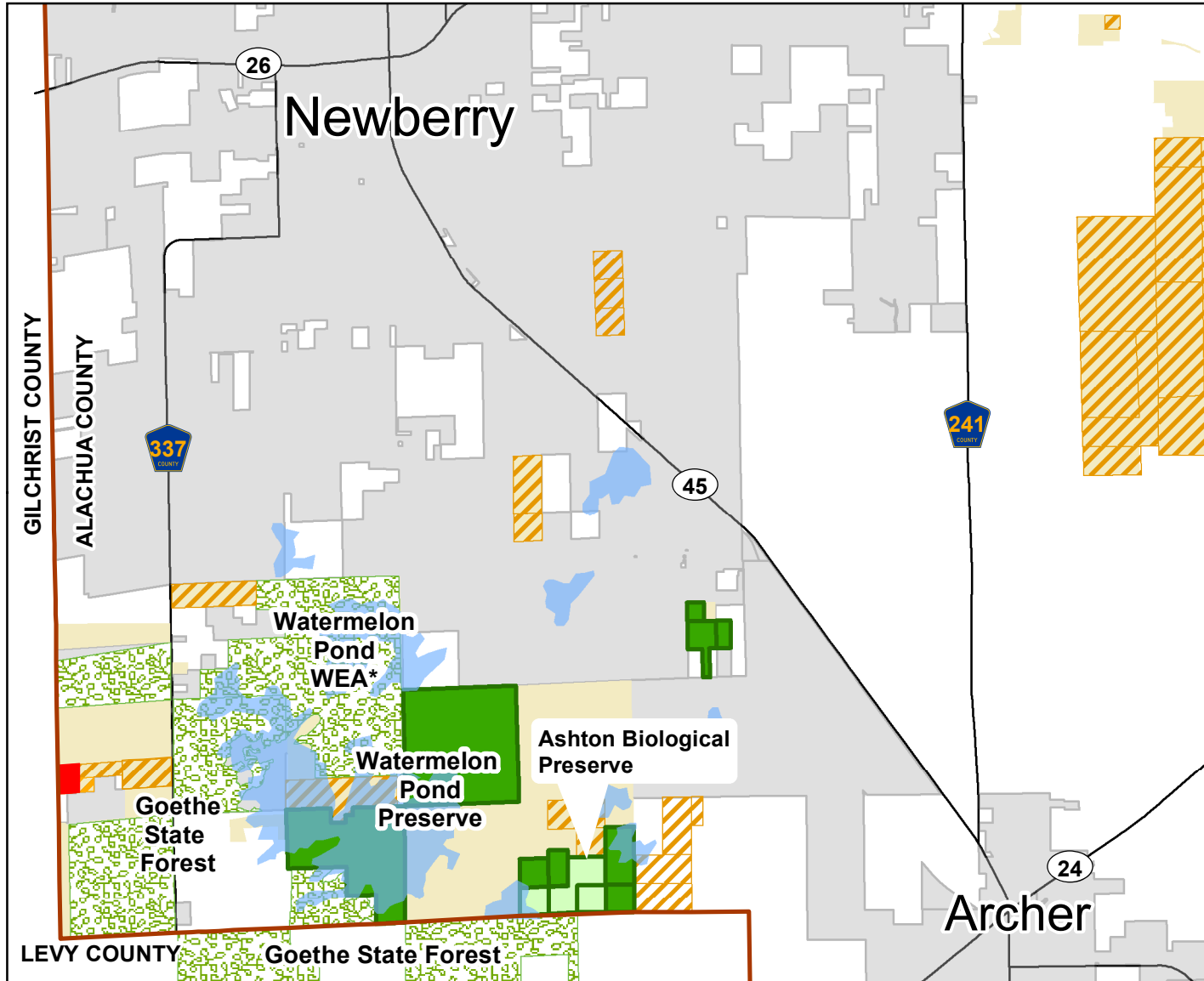
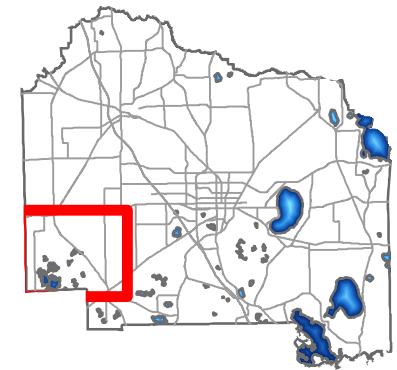


Watermelon Pond - Moore - Purcell - Trammell Location Map



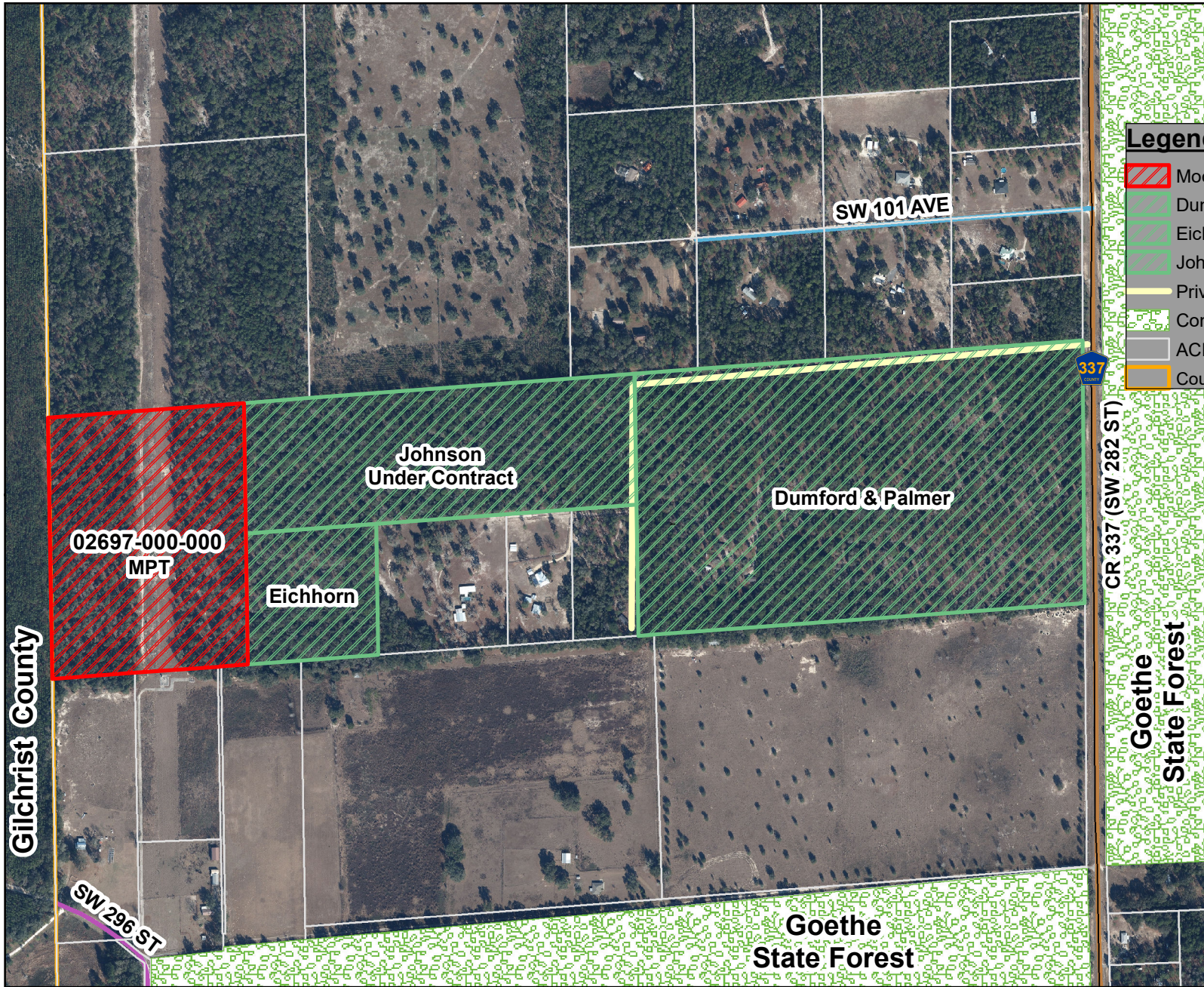
Legend

- Moore-Purcell-Trammell Parcel (30 ac)
- ACF Preserve
- Conservation Easement
- Lakes
- Active Acquisition
- Partner Conservation Lands
- ACF Projects
- CountyBoundary
- Major Road



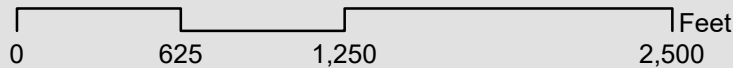
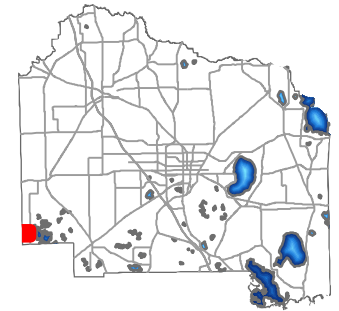
*WEA = Wildlife
Environmental Area

Watermelon Pond - Moore, Purcell & Trammell (MPT) Surrounding Parcels Map



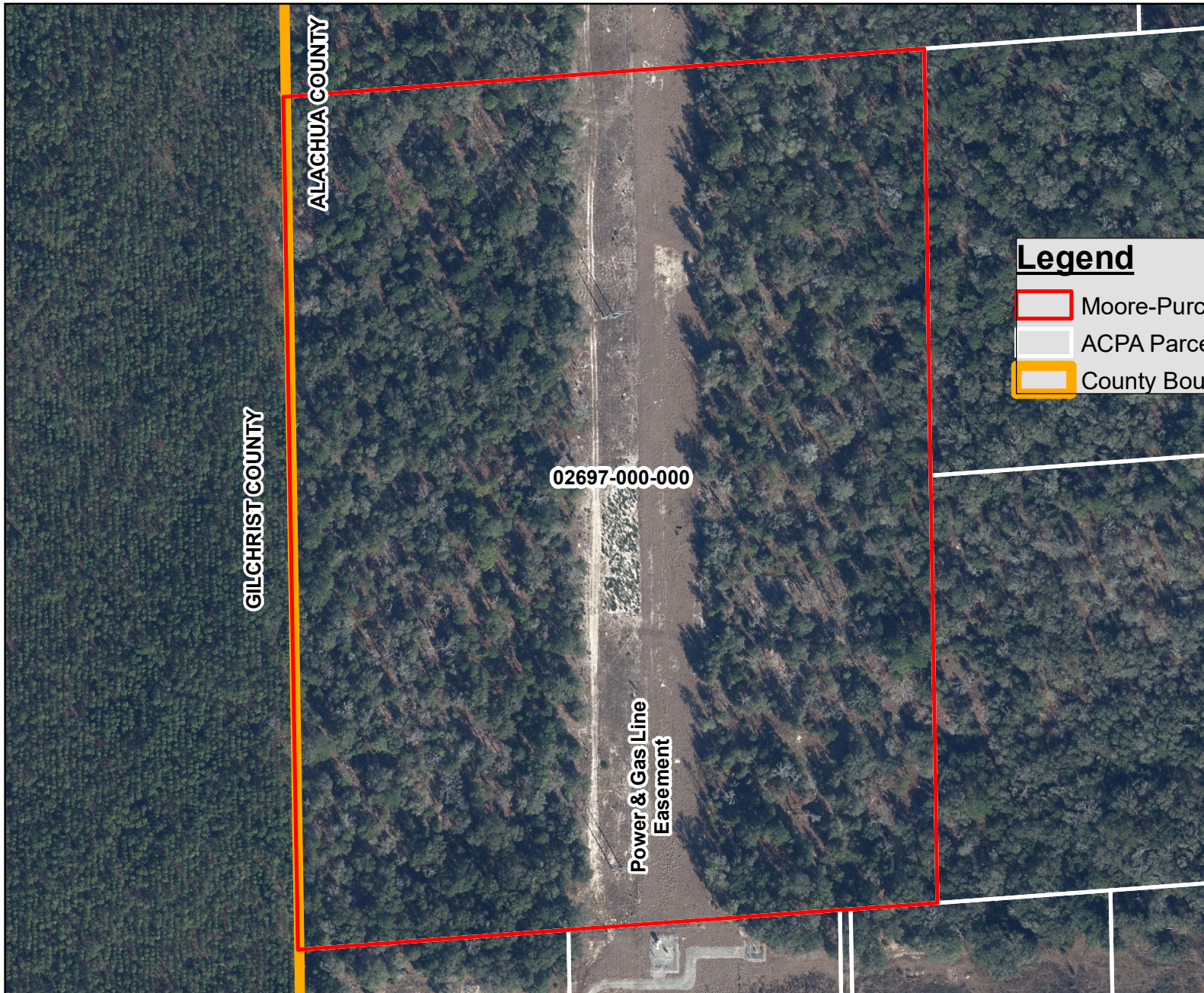
Legend

- Moore-Purcell-Trammell Parcel (30 ac.)
- Dumford & Palmer (68.5 ac.)
- Eichhorn Parcel (10 ac.)
- Johnson Parcel (30 ac.)
- Private Neighborhood Access Road
- Conservation Lands
- ACPAParcel
- CountyBoundary



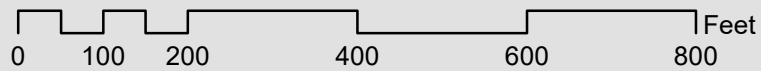
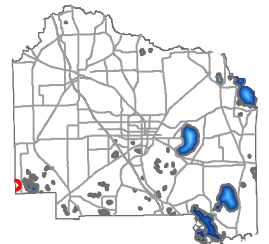
DISCLAIMER: This map and the spatial data it contains are made available as a public service, to be used for reference purposes only. The Alachua County Environmental Protection Department provides this information AS IS without warranty of any kind. The quality of the data is dependent on the various sources from which each data layer is obtained.

Watermelon Pond - Moore - Purcell - Trammell Parcel Map



Legend

- Moore-Purcell-Trammell Parcel (30 ac)
- ACPA Parcels
- County Boundary



DISCLAIMER: This map and the spatial data it contains are made available as a public service, to be used for reference purposes only. The Alachua County Environmental Protection Department provides this information AS IS without warranty of any kind. The quality of the data is dependent on the various sources from which each data layer is obtained.