



# Metropolitan Transportation Planning Organization

## For the Gainesville and Alachua County Area

January 27, 2025

### MEETING MEMORANDUM

To: Metropolitan Transportation  
Planning Organization Board

From: Brad Thoburn

Subject: Transportation Alternatives Application

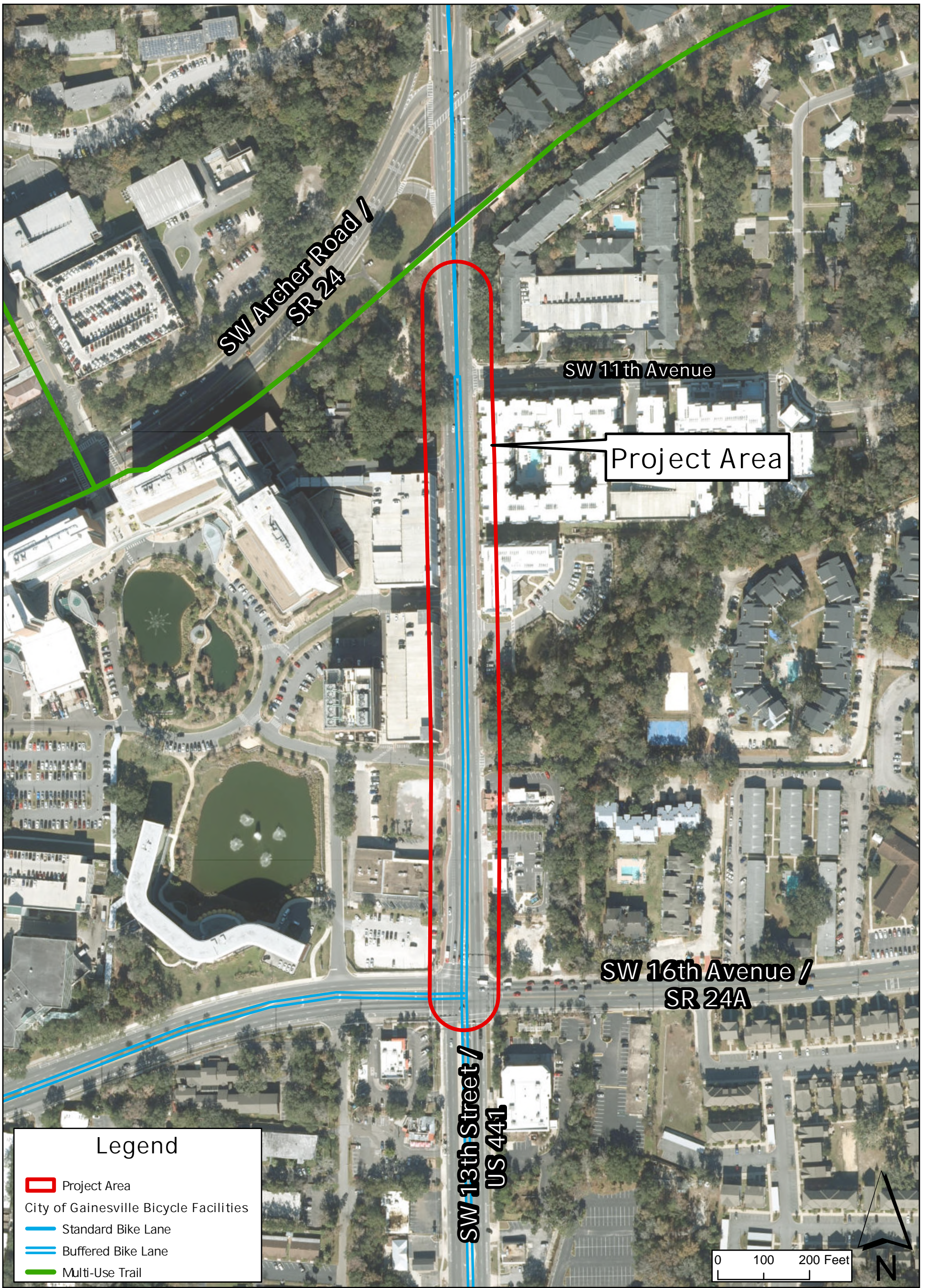
### STAFF RECOMMENDATION

Approve City Gainesville Transportation Alternatives Application for Bicycle and Pedestrian enhancements along the section between SR24/Archer Rd and SR226/SW 16<sup>th</sup> Ave.

### BACKGROUND

The City of Gainesville is submitting an application for Bicycle and Pedestrian enhancements along the section between SR24/Archer Rd and SR226/SW 16<sup>th</sup> Avenue. Improvements including narrowing of inside lanes via restriping, addition of bike lane protection devices, and addition of 2 signalized pedestrian crossings. The estimated cost is \$1.3 million. The design was developed through the on-going Project Development and Environmental process. Public input was solicited via several public meetings including corridor walks and several meetings with stakeholders including FDOT, University of Florida and emergency responders. This segment is identified as a safety priority in the City's Vision Zero Action Plan as part of the City's High-Risk Network.

The proposed configuration and location map are attached for reference.



# SW 13th Street

SW 16th Ave to North of SW 11th Ave

Transportation Alternatives Grant Application

Aerial Location Map

US441/SW 13<sup>th</sup> St PROPOSED RECONFIGURATION (SR24/Archer Rd to SR226/SW 16<sup>th</sup> Ave)

