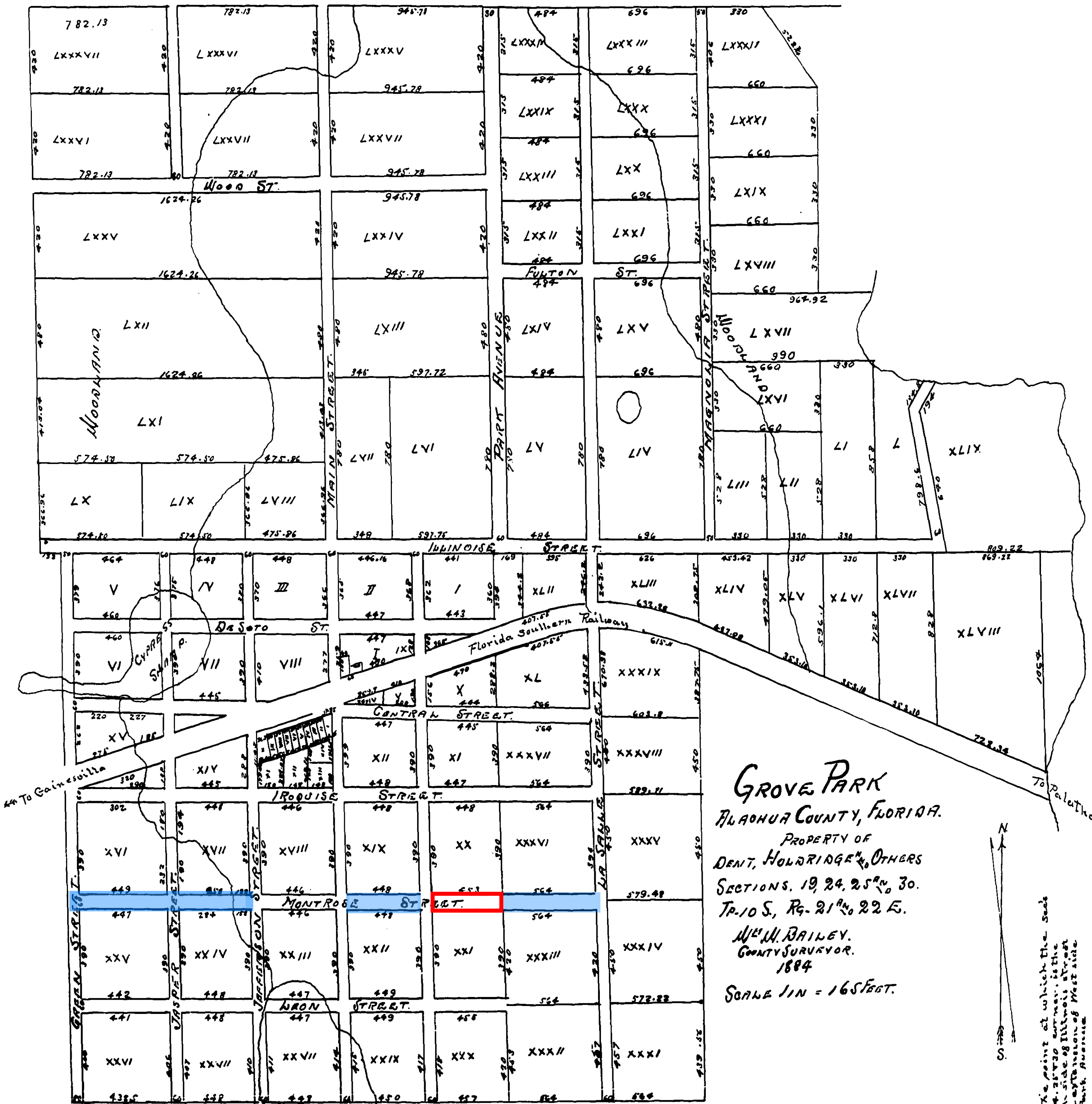


Grove Park: Proposed Montrose Street Vacation

Blue sections
vacated in
Resolution 93-60.

(See detail below.)

Red section is the
proposed vacation.



GROVE PARK
 ALACHUA COUNTY, FLORIDA.
 PROPERTY OF
 DEWITT, HOLDRIDGE & OTHERS
 SECTIONS 19, 24, 25th, 30.
 T. 10 S., R. 21st W., 22 E.
 W. M. BAILEY,
 COUNTY SURVEYOR.
 1884
 SCALE 1 IN = 165 FEET.

Recorded March 23rd 1885
 J. A. Cowlishaw
 Clerk

SEE THE POINT at which the south
 side of Montrose Street is the
 south side of Woodland Street
 the extension of West side
 of Park Avenue