

City of
Gainesville



Wild Spaces & Public Places

Betsy Waite, P.E. | Director

Agenda



**Proposed 2023-2032
Joint City/County
Projects**



**Update on 2017-2022
Joint City/County
Projects**



 **\$3M County Partnership Funding – Divided between the 9 municipalities (\$333,333 for the City of Gainesville for this round of WSPP).**

Proposed Project:

- NE 31st Avenue Trail (NE 15th Street to NE Waldo Road), \$333,333

 **\$3M County Partnership Funding – Dedicated to the City of Gainesville.**

Proposed projects:

- Thelma A. Boltin Center, \$1,500,000
 - 8th and Waldo, \$1,000,000
- Sweetwater Wetlands Park Visitor's Center, \$500,000

\$333,333 Grant Project

NE 31st Avenue Trail (NE 15th Street to NE Waldo Road)



Project Overview



Who will benefit from the project?

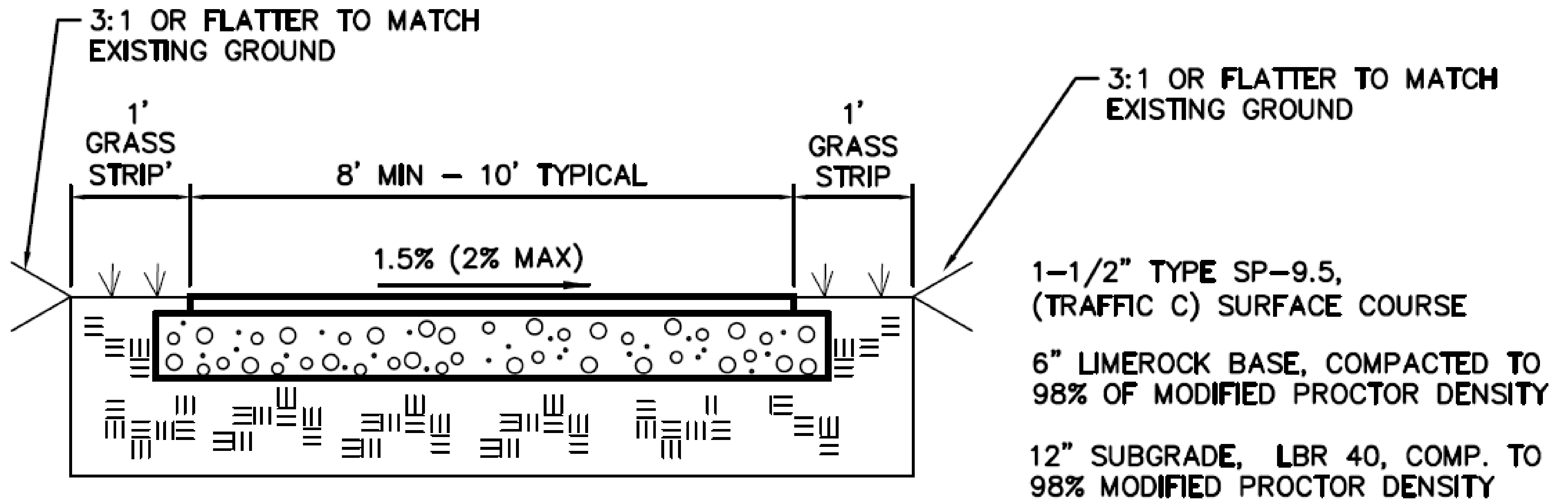


Local & County-Wide Significance



Next Steps





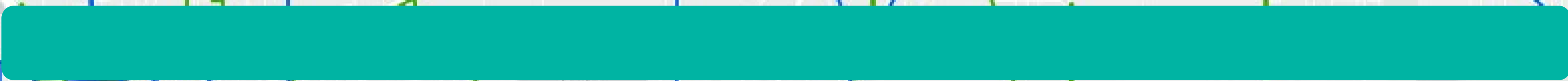
NE 31st Avenue Trail (NE 15th Street to NE Waldo Road)



NE 31st Avenue Trail
(NE 15th Street to NE Waldo Road)

Eastside Loop Trail

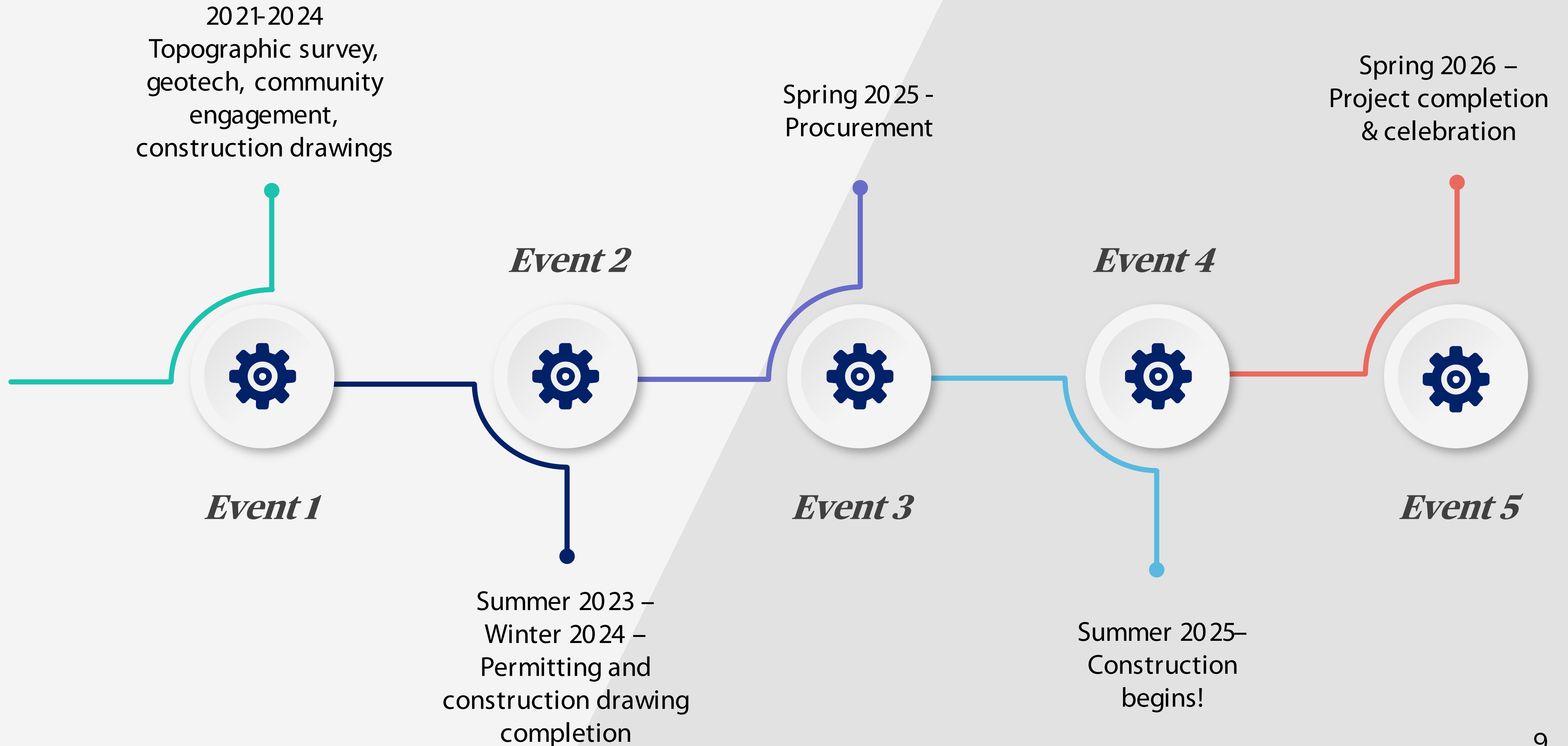
Kincaid Loop Trail
(County Project)



- 🌿 Neighbors and regional trail users.
- 🌿 Trails add value to homes within surrounding communities.
- 🌿 Establishing a connected system of greenways and trails provides regional users with transportation options.
- 🌿 Local businesses. Trails can become tourist attractions, drawing users from outside the region.
- 🌿 The environment. Carbon emissions could be reduced by providing sustainable transportation options.

- 🌿 Neighbors will benefit from having a safe space for children, cyclists and other pedestrians to travel through their community without fear of traffic dangers.
 - 🌿 This trail will improve safe access to Unity Park and Flatwoods Conservation Area.
 - 🌿 Trails promote a variety of exercise from cycling, walking, jogging, and more.
 - 🌿 Trails help people of all ages incorporate exercise into their daily routines by connecting them with places they want or need to go.
-
- 🌿 Establishing a connected system of greenways and trails provides regional users with transportation options, supports local businesses and can even be tourist attractions, drawing users from outside the region.
 - 🌿 This trail is part of the larger interconnected system (and the longer-term vision of the Eastside Loop Trail).

Project Timeline



Thelma A. Boltin Center

\$1,500,000



Project Overview



Who will benefit from the project?



Local & County-Wide Significance



Next Steps



- 🌿 Neighbors and regional users
- 🌿 The renovated building will be used for a variety of rentals to include dance, musical performances, business meetings and community events
- 🌿 Larger events will draw users from outside the region



Local & County-Wide Significance



October 3, 2024 –
City Commission
approves a task
assignment with
the design team
for Phase 1
Improvements

Spring 2025 -
Staff make
presentations
to the Historic
Preservation
Board / Phase 1
Project Design
Completes

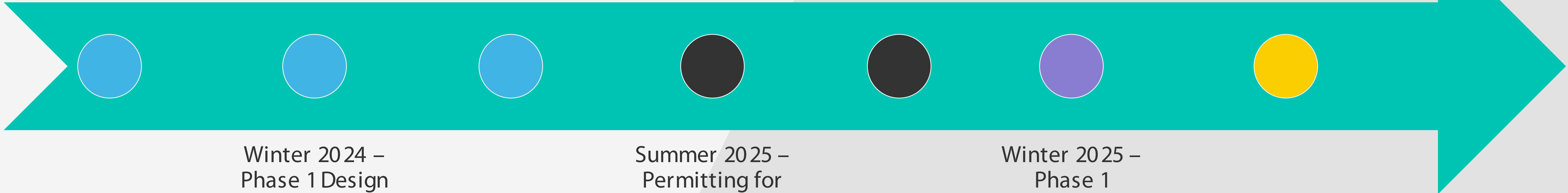
Fall 2025–
Procurement

Winter 2026 -
Construction
Completion on Phase
1 Structural
Improvements,
Evaluate Phase 2
scope of work and
remaining budget

Winter 2024 –
Phase 1 Design
Kick-off and
Cost Estimating

Summer 2025 –
Permitting for
Phase 1
Structural
Improvements

Winter 2025 –
Phase 1
Construction
kicks off



8th and Waldo



Project Overview



Who will benefit from the project?



Local & County-Wide Significance



Next Steps

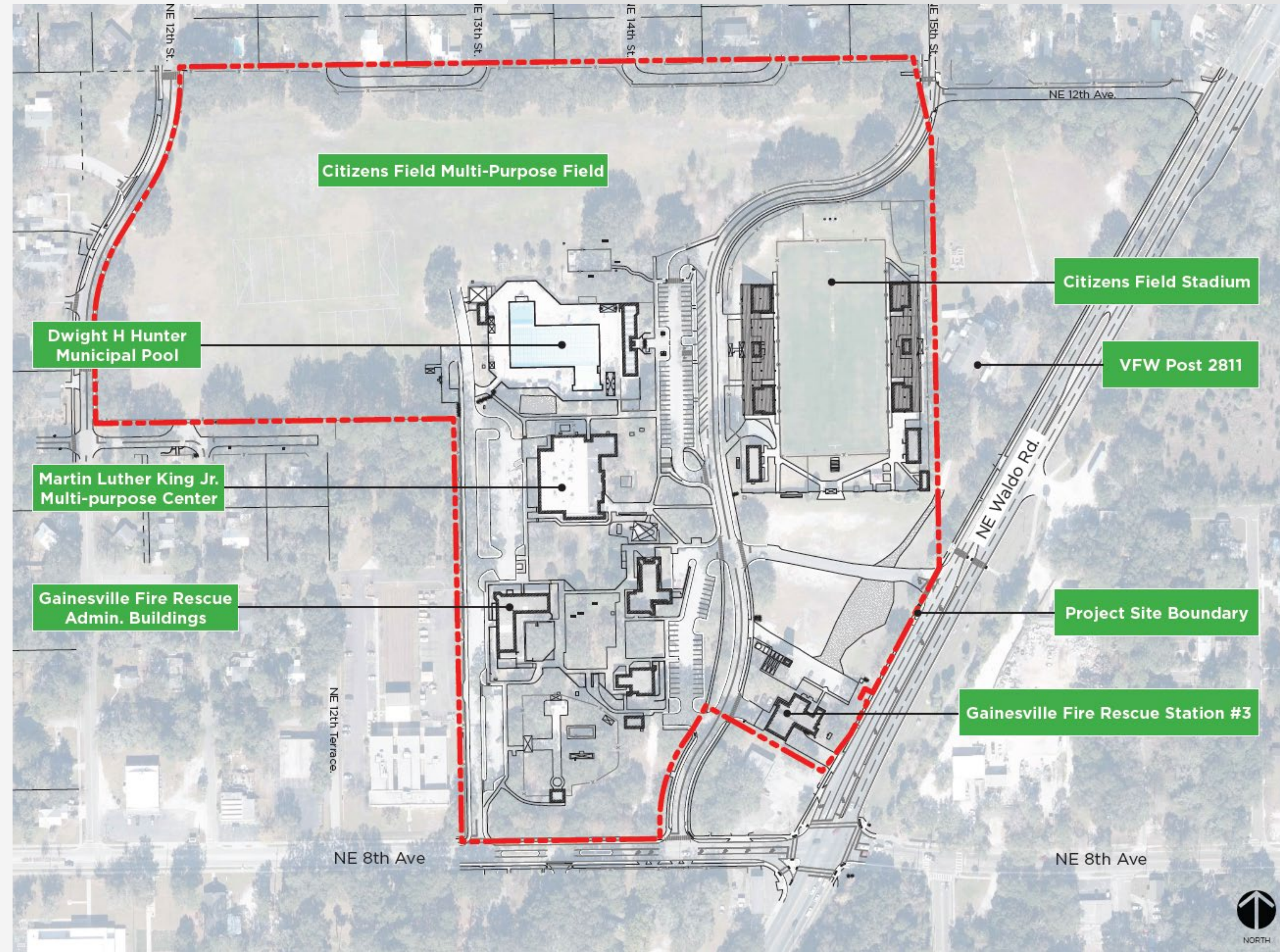
8th and Waldo Improvements
\$1,000,000



🌿 Neighbors and regional sports enthusiasts



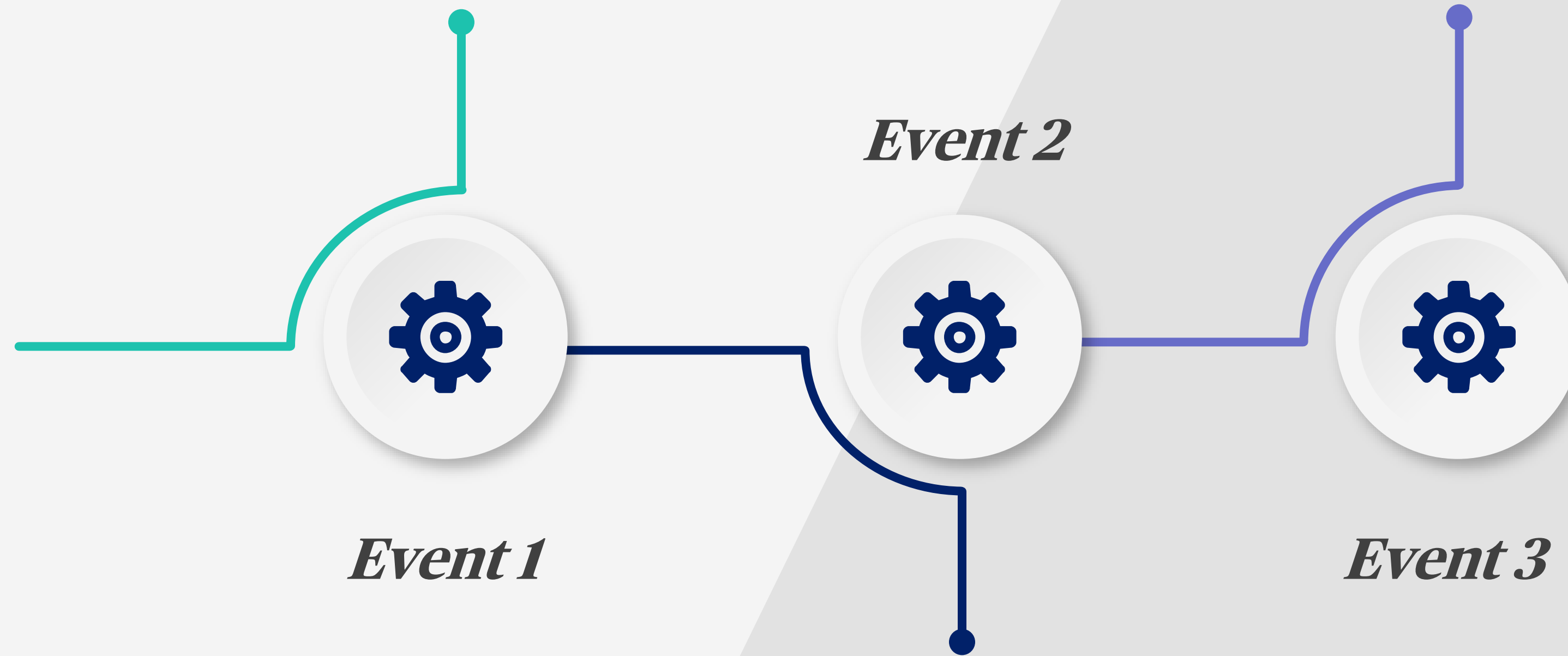
🌿 Sports tourism can have positive economic impact on the local economy by attracting users from outside the area.



Project Timeline

2023-2026
Community Engagement,
Design and Permitting

2027/2028 –
Construction and
project celebration!



Winter, 2026
Procurement

Sweetwater Wetlands Park Vistor's Center



Project Overview



Who will benefit from the project?



Local & County-Wide Significance



Next Steps

Sweetwater Wetlands Park Visitor's Center

\$500,000



🌿 The visitor's center will be used for a variety of user groups to include ACPS students, Audubon, and many others! Having a structure where park patrons can seek refuge from inclement weather and have lunch will allow users to extend their visits.

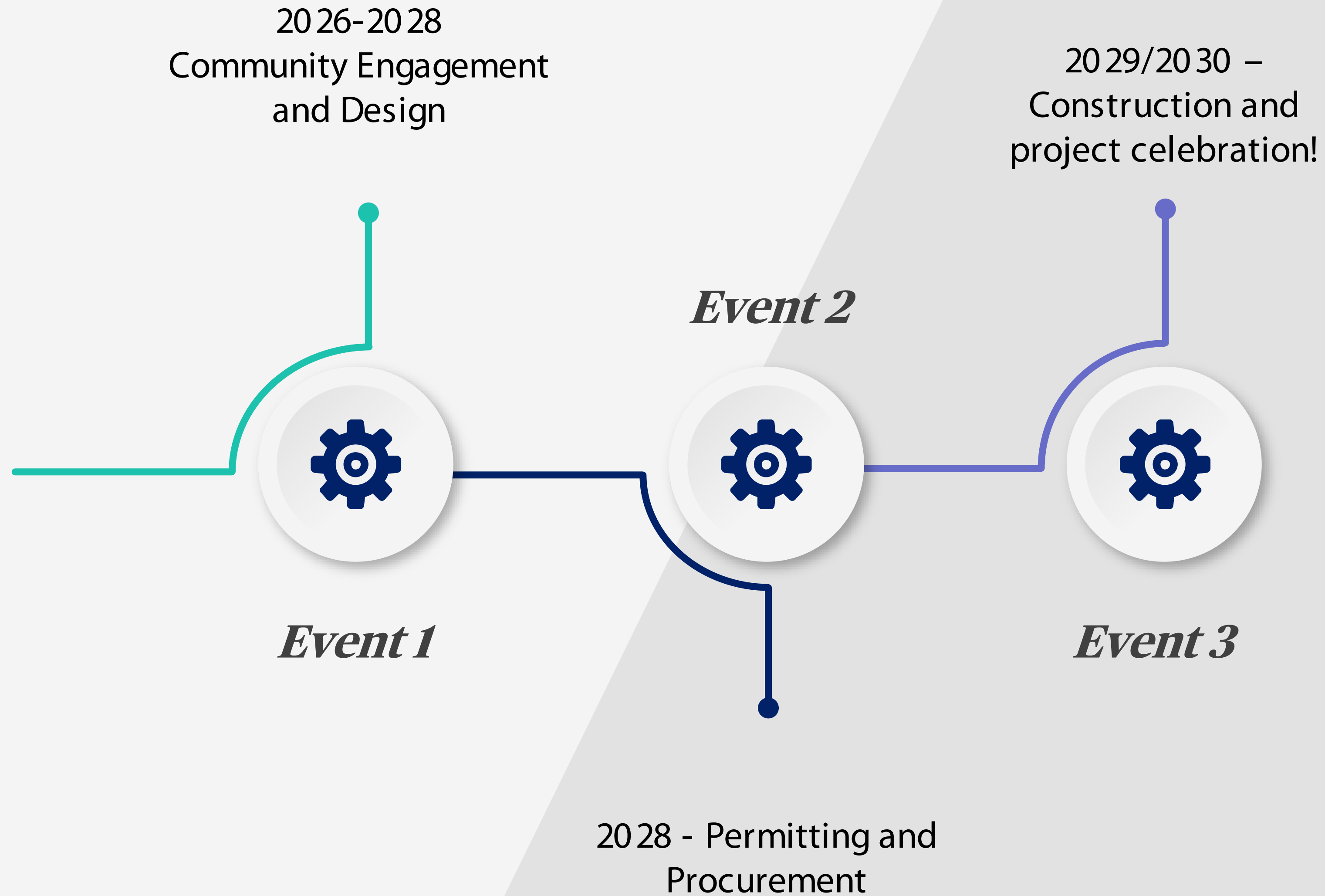
🌿 Sweetwater Wetlands Park earned the Great Florida Birding & Wildlife Trail site designation from the Florida Fish and Wildlife Conservation Commission (FWC) in 2023.



Local & County-Wide Significance

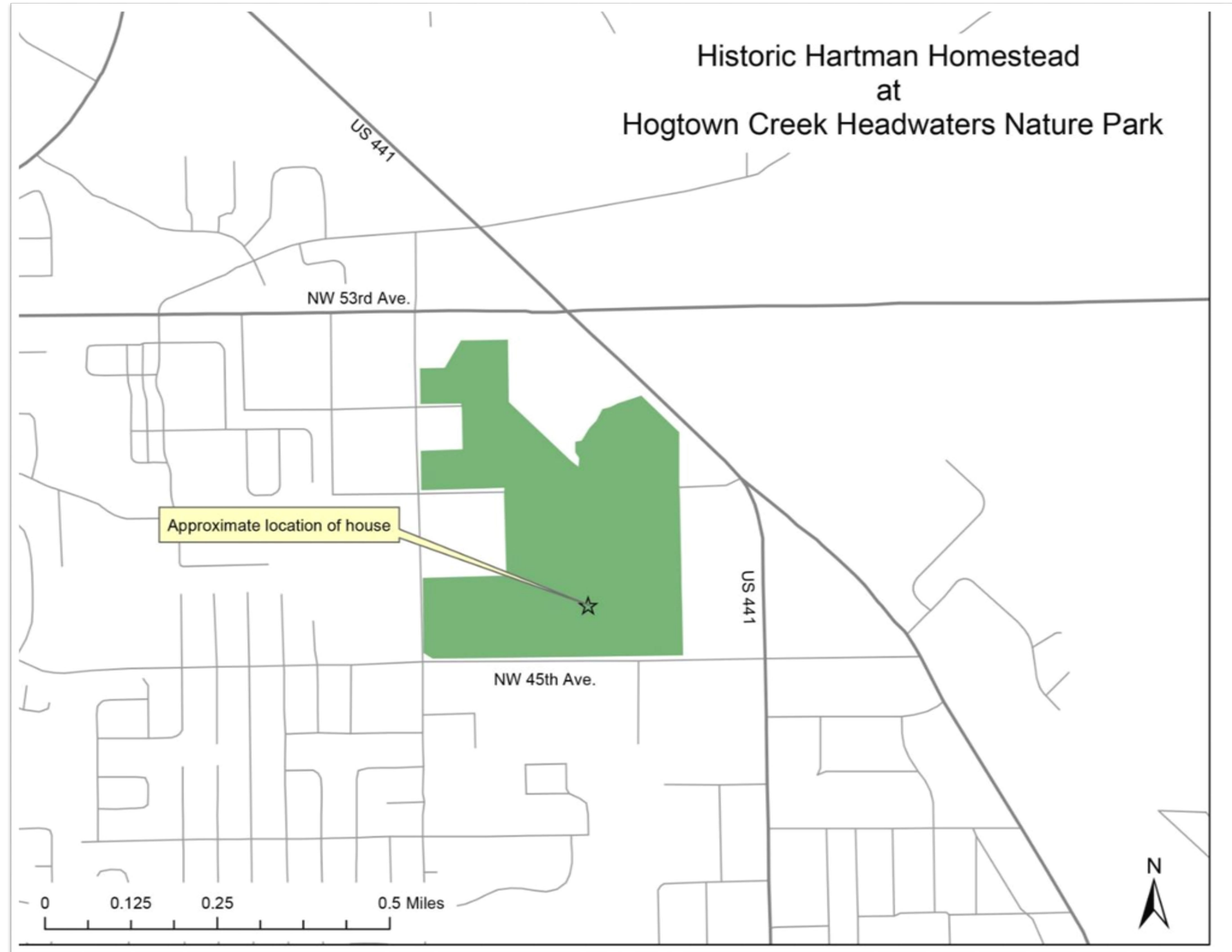


Project Timeline



Update on 2017-2022 Joint City/County Projects

Hogtown Creek Headwaters Nature Park



Construction: 2019-2020



11/1/19 3:42:02 P



1/29/20 3:06:24 PM EST



Under Your Feet

Under the rocks on the path, have you thought of what you're stepping on? Below the top layer of soil and a layer of humus, there's a world of life. In the soil, there are billions of organisms, some of which are helpful, some are harmful. Some are just passing through, while others are making a home. The soil is a complex ecosystem, and it's all under your feet.

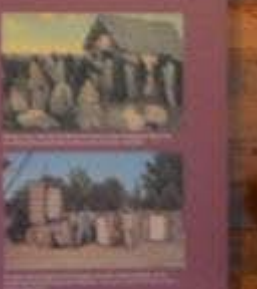
It's Talk Limestone

Limestone is a sedimentary rock that is made of calcium carbonate. It is one of the most common rocks in the world. Limestone is used in many different ways, including as a building material, in the production of cement, and in the manufacture of glass. It is also used in the production of steel and as a source of lime. Limestone is a very important rock, and it is found in many different parts of the world.



Early Agriculture in Alachua County

Early agriculture in Alachua County was primarily based on the cultivation of sugarcane. The first sugarcane fields were established in the 1820s, and by the 1840s, sugarcane was the dominant crop. The industry was largely controlled by a few large plantations, and the workers were often enslaved or indentured. The sugarcane industry played a major role in the development of Alachua County and the surrounding region.



Railroads

The arrival of the railroad in Alachua County in the 1880s revolutionized the local economy. It allowed for the efficient transport of goods and people, leading to the growth of the sugarcane industry and the development of new communities. The railroad also facilitated the migration of people to the area, contributing to the diverse population of the region.

Proper Introductions Please!

I am Hogtown Creek and if I could talk, here's what I'd tell you...



What the Rule Potential for Pollution Best Body of Creek Ditched and Dammed Gas Springs Run Rainwater

Legend:
 Yellow dot: What the Rule
 Red dot: Potential for Pollution
 Green dot: Best Body of Creek
 Blue dot: Ditched and Dammed
 Purple dot: Gas Springs Run
 Orange dot: Rainwater



Slow and seepy, or fast and flashy?

In the past, rain falling on natural habitats took a much slower path, gradually seeping into the ground through plants, roots, and rocks. The water that made it to the soil surface would percolate into the earth and slowly seep through the ground until it eventually trickled out from a slope above me reaching me hours or days later. The increase in water flow from a storm might have been barely noticeable.

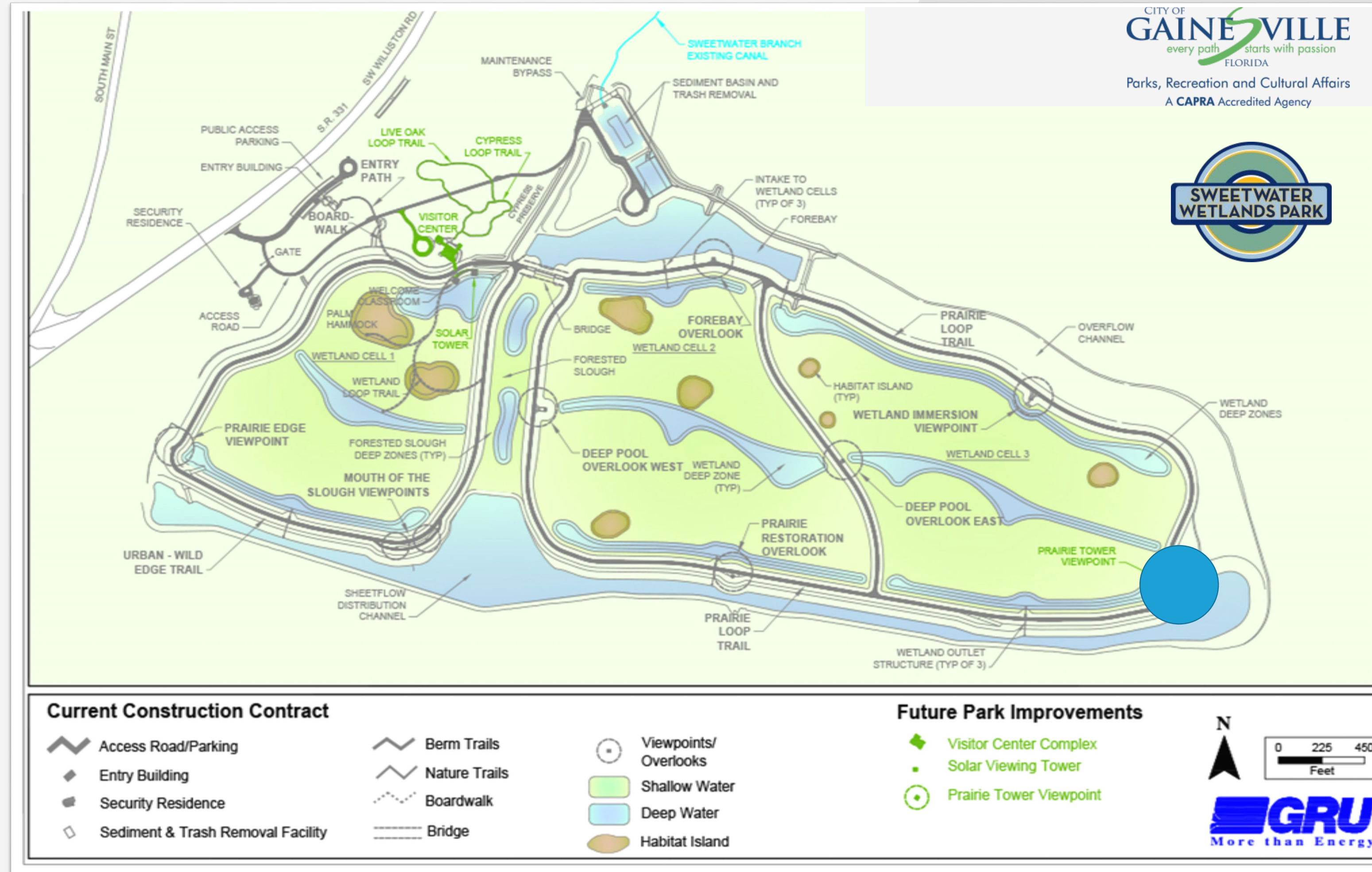
Today, rain falls on roads, houses, lawns, and driveways where it flows quickly over the surface and almost immediately through storm drains and into creeks. All this water entering creeks at once moves with great force, carving the creek beds ever deeper. Rapid rises in creek levels after storms are called flash floods. Shallow creeks like me, since slow and seepy, can now be described as "flashy".

Health Screening

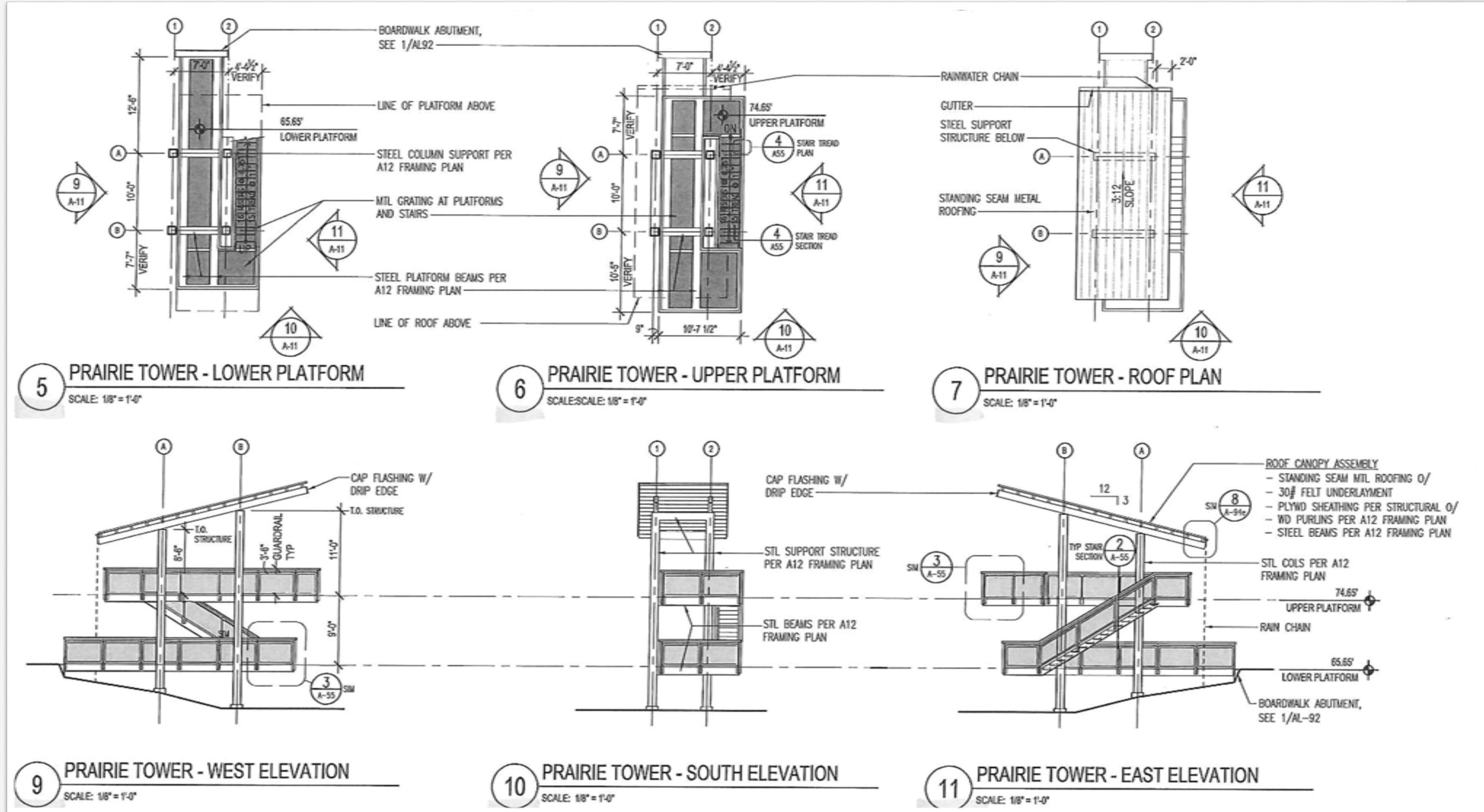
I get regular checkups just like you! Water scientists collect water samples from multiple locations several times a year to monitor my health by looking at data such as temperature, chemistry, and the amount of oxygen in the water. I'm healthiest at my beginning, but when I flow past homes and shopping centers I pick up garbage, fertilizers, bacteria from pet waste, and oil residue from roads. Wetlands help clean me up before I disappear underground at Hole Sink and into the aquifer where we get our drinking water!



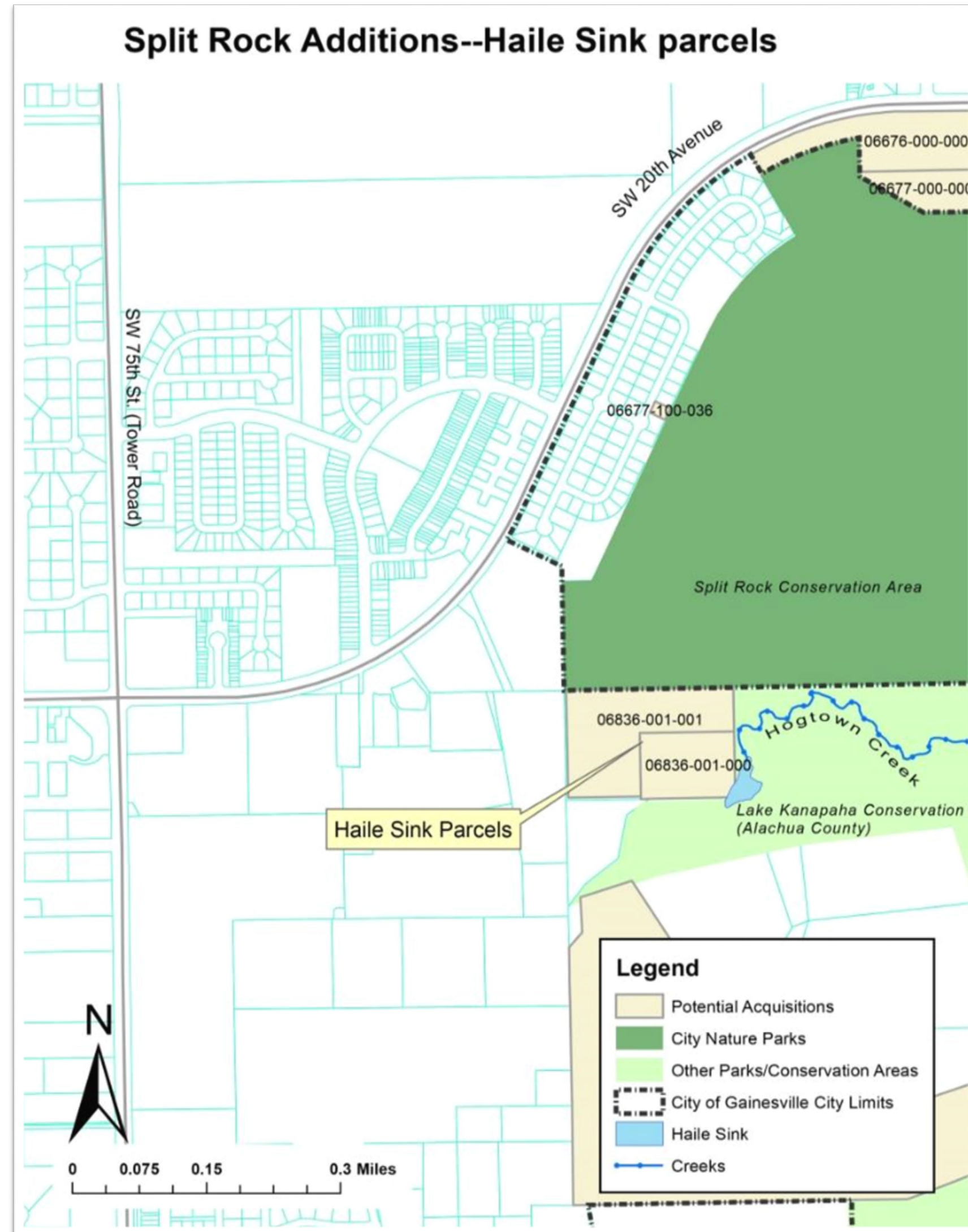
Sweetwater Wetlands Park Prairie Tower



Sweetwater Wetlands Park Prairie Tower



Improvements to Split Rock Preserve



Update on 2017-2022 Joint City/County Projects

Staff Recommendation



Questions?

