



Watermelon Pond – Ashton Conservation Easement Release of Right of First Refusal

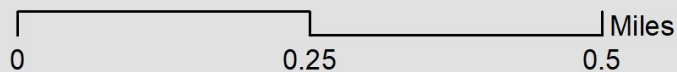
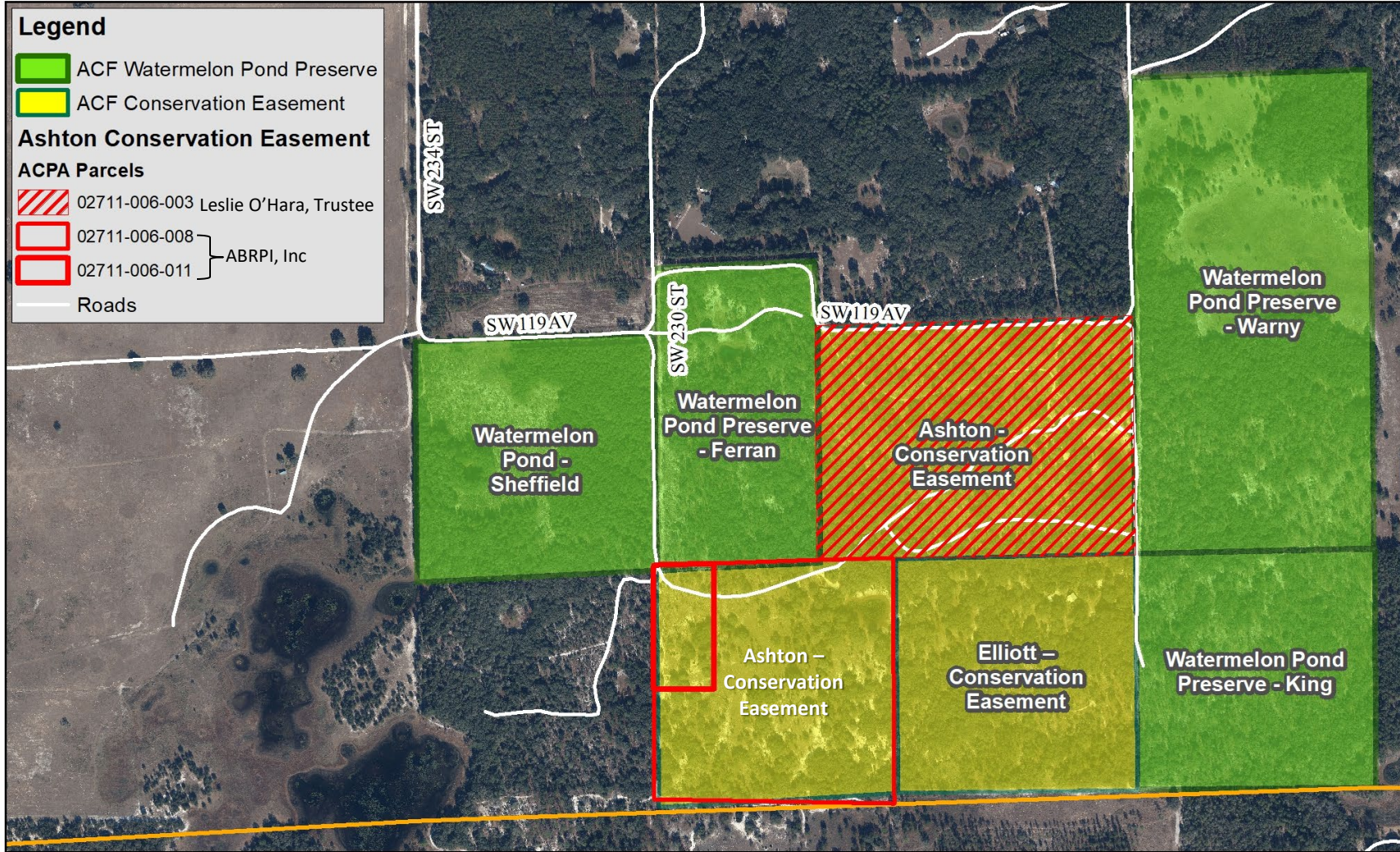
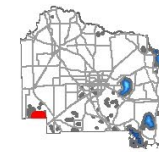
Andi Christman
Program Manager, Land Conservation & Management

Summary of Proposed Release of Right of First Refusal

- **Owner:** Leslie O'Hara, Trustee
- **Parcel number:** 02711-006-003
- **Acreage:** 51.36 acres
- **Current Conservation Status:** Parcel is part of County-held conservation easement over the 89-acre Ashton Biological Preserve, acquired on 1/30/2007. This was Alachua County's first Conservation Easement. Located in the Watermelon Pond Project Area.
 - Easement provides County with right of first refusal in the case of sale of the underlying fee interests.
- **Current Management:** One of 3 parcels in easement, managed by Ashton Biodiversity, Research, and Preservation Institute, Inc. as a research and educational facility, with residences.



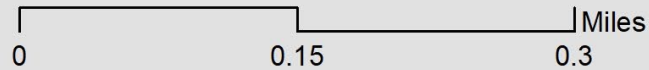
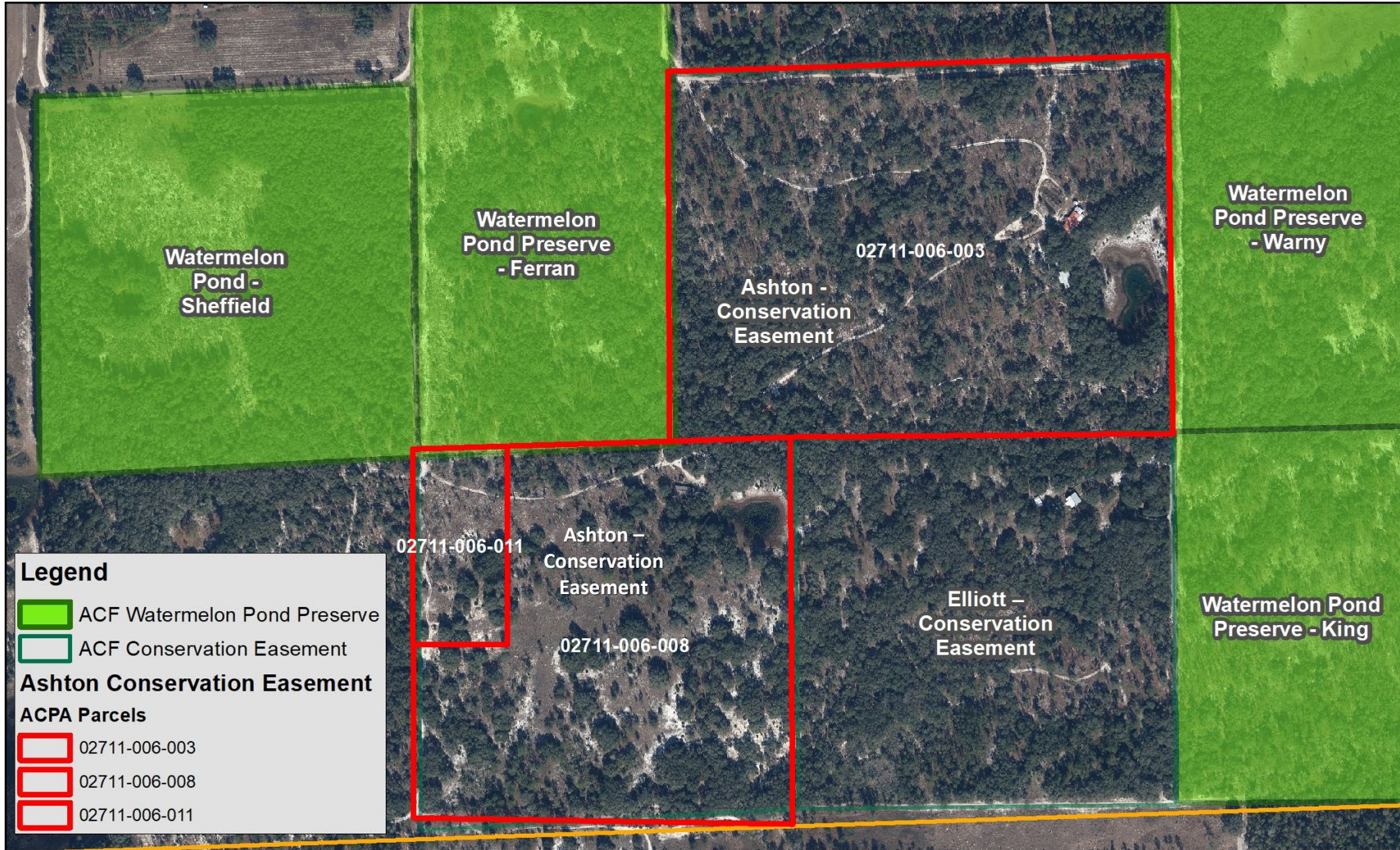
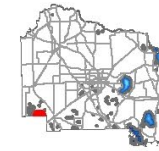
Watermelon Pond - Ashton CE Location Map



DISCLAIMER: This map and the spatial data it contains are made available as a public service, to be used for reference purposes only. The Alachua County Environmental Protection Department provides this information AS IS without warranty of any kind. The quality of the data is dependent on the various sources from which each data layer is obtained.



Watermelon Pond - Ashton CE Parcel Map



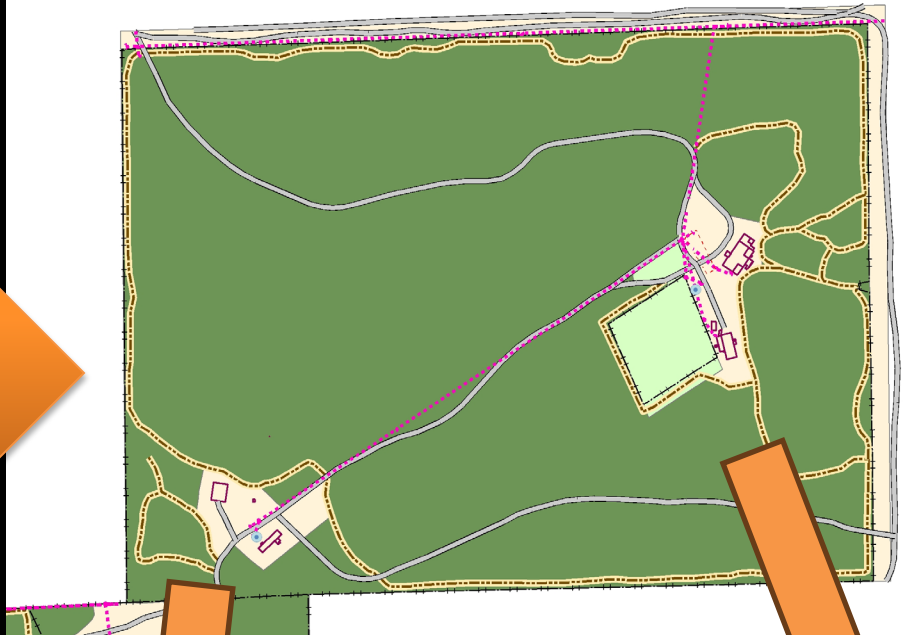
DISCLAIMER: This map and the spatial data it contains are made available as a public service, to be used for reference purposes only. The Alachua County Environmental Protection Department provides this information AS IS without warranty of any kind. The quality of the data is dependent on the various sources from which each data layer is obtained.

Ashton Conservation Easement Stewardship Principles

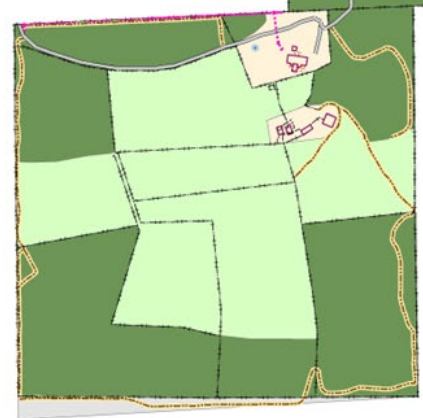
- Protection of scenic and other distinctive rural character of the landscape;
- Maintenance and enhancement of wildlife habitat;
- Protection of unique and fragile natural areas and rare species habitats;
- Maintenance and enhancement of species biodiversity;
- Maintenance or creation of a healthy balance of uneven aged timber classes;
- Maintenance or improvement of the overall quality of the timber resource;
- Maintenance of the value of the resource in avoiding land fragmentation;
- Protection of surface water quality, the Floridan Aquifer, wetlands, and riparian areas;
- Continued scientific research and environmental education.



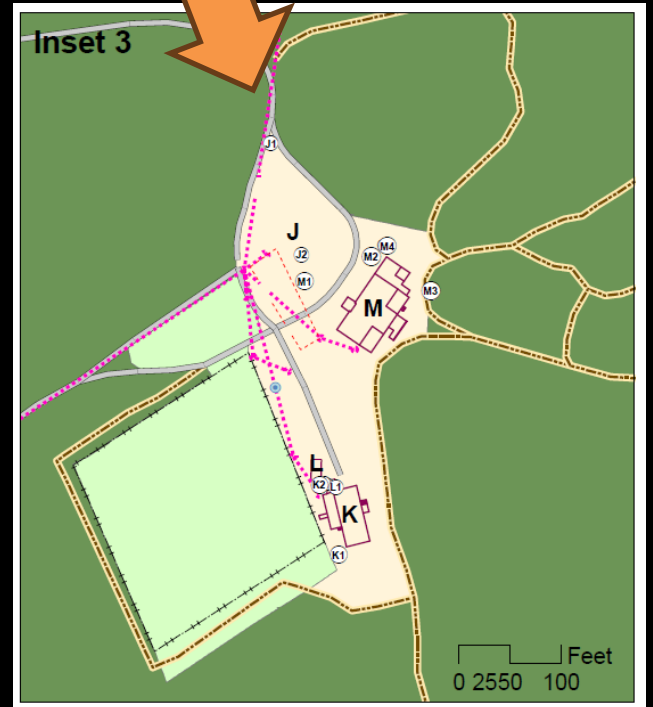
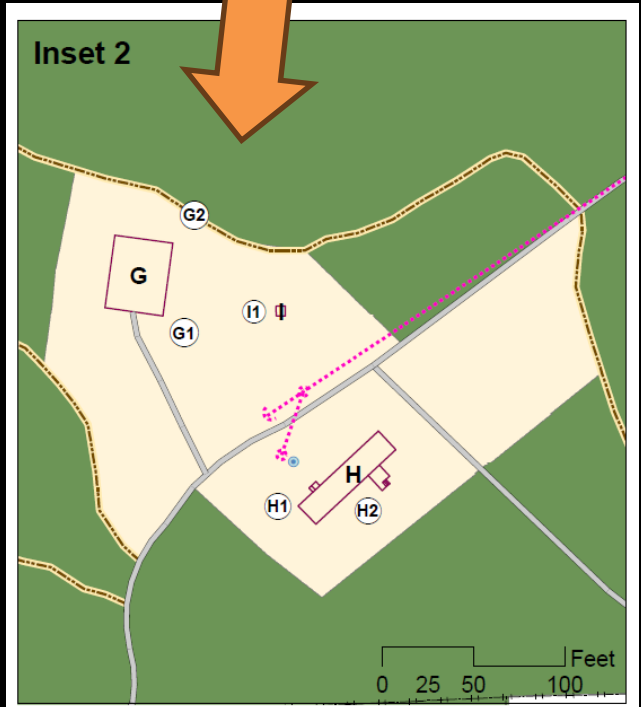
Ashton Baseline Report - Baseline Map Figure 2



**EASEMENT
ZONES
&
BUILDINGS**



Area Type		
 Developed 6.7 ac	 Powerlines (1.10 miles)	 Structures
 Semi-natural 17.8 ac	 Roads (1.84 miles)	 Concrete
 Natural 64.8 ac	 Fences (3.54 miles)	 Wells
 Not Included 1.1 ac	 Firebreaks (2.76 miles)	



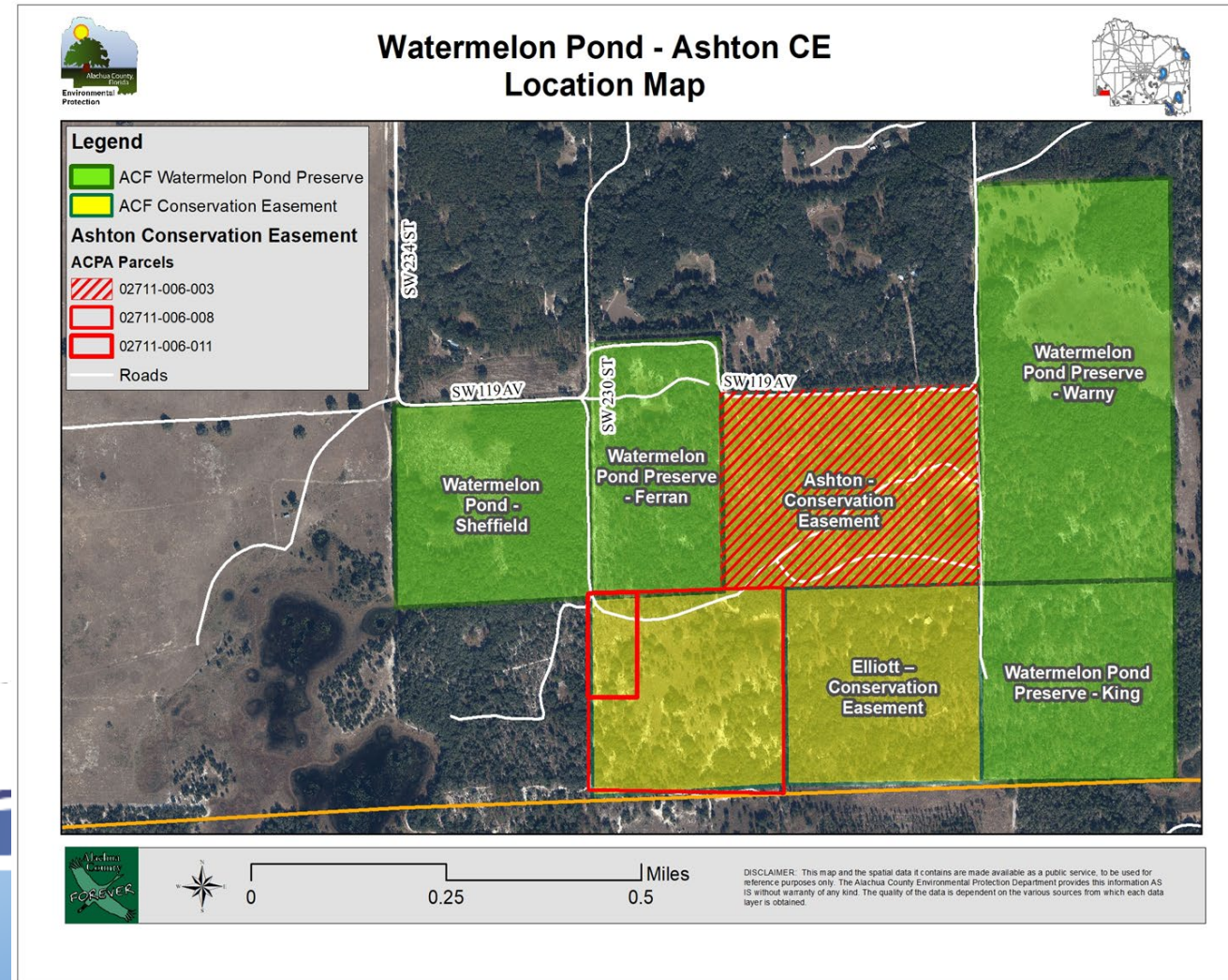
DISCLAIMER: This map and the spatial data it contains are made available as a public service, to be used for reference purposes only. The Alachua County Environmental Protection Department provides this information AS IS without warranty of any kind, implied or expressed, regarding accuracy, completeness, or fitness of use. The quality of the data is dependent on the various sources from which each data layer is obtained.





Staff Assessment of Release of Right of First Refusal Parcel 02711-006-003

- A private conservation buyer has made an offer on the underlying fee ownership for the parcel.
- The buyer intends to allow continued operation of the Ashton Biodiversity and Research and Preservation Institute on the parcel and structures.
- ABRPI operation in the area supports conservation goals on the parcel and in the Watermelon Pond region.



Ashton Conservation Easement Ownership Transfer Recommendations

Approve and authorize the Chair to:

1. Release right of first refusal to purchase underlying fee interests over ACPA Tax parcel 02711-006-006, subject to current offer; and
2. Approve and authorize a Chair letter to Leslie O'Hara, Trustee, confirming release of right of first refusal over ACPA tax parcel 02711-006-003.

QUESTIONS?

