



# **Kincaid Loop Trail, SE 27<sup>th</sup> Street**

## **Alternatives Analysis & Preferred Alignment**

# Analysis Alternative Summary



## **Alternative 1:**

East side of SE 27<sup>th</sup> St.

## **Alternative 2:**

West side of SE 27<sup>th</sup> St.

Analysis  
Segment

# What we looked at

Analysis Criteria	Preferred Location	
	Alternative 1: East Side of SE 27 <sup>th</sup> St.	Alternative 2: West Side of SE 27 <sup>th</sup> St.
Crash History	✓	
Existing Topography	✓	
Transit/School Bus Access	✓	
Conflict Points Severity <i>(Pedestrian/Bicycle/Motorists)</i>	✓	
Drainage Accommodations		✓
Shade/Tree Canopy Accommodations	✓	

# Crash Analysis

**2011-2019**

- **15 Total Crashes**
  - 7 Injuries
  - 0 Fatalities

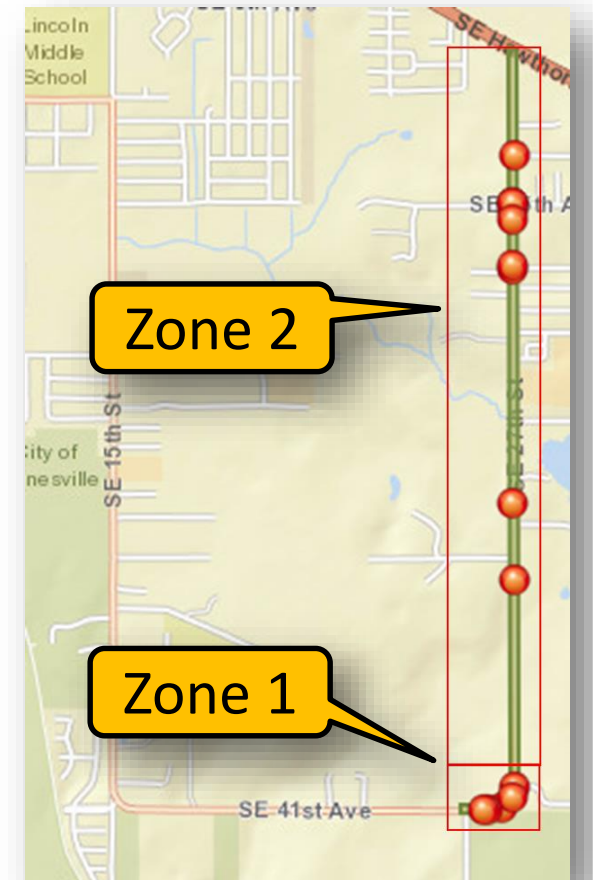
*Speeding and distracted driving are present on SE 27<sup>th</sup> St.*

**Zone 1: SE 41<sup>st</sup> Ave.**

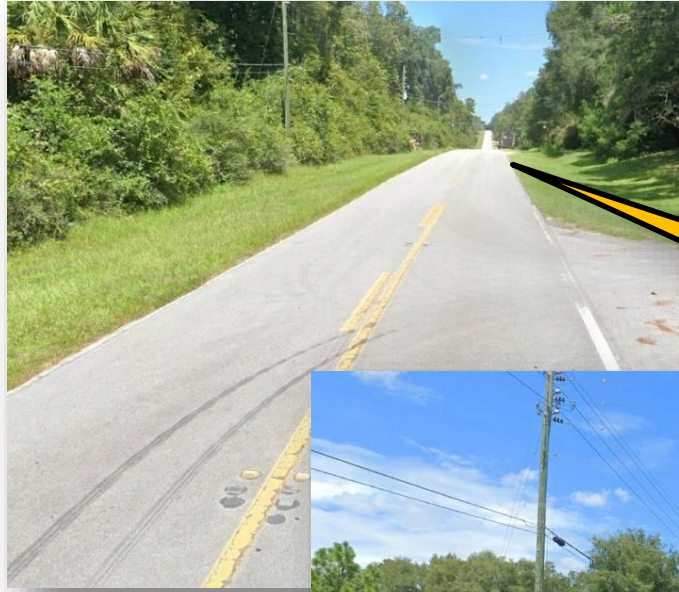
- Collision occurred primarily in eastbound/ northbound directions.
- Evidence of speeding and distracted driving.

**Zone 2: North of SE 41<sup>st</sup> Ave. to SE Hawthorne Rd.**

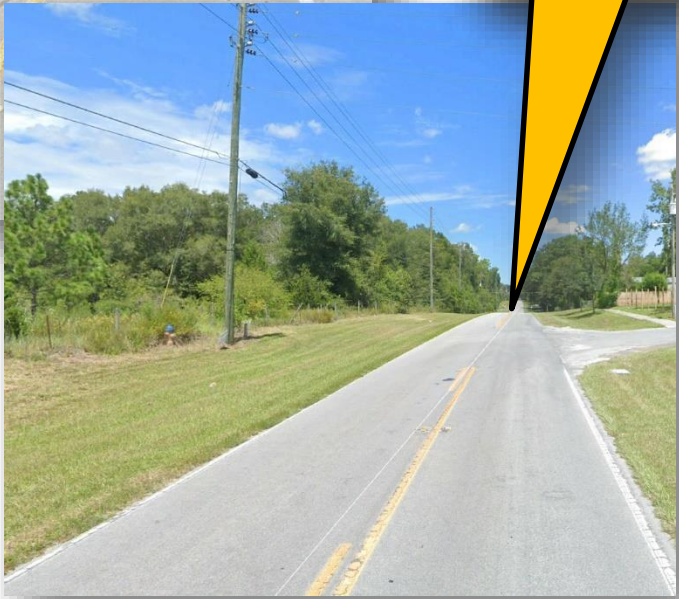
- Collisions were evenly distributed between the northbound and southbound directions.
- Distracted driving, speeding, and careless driving were major contributing factors



# Existing Terrain



SE 27<sup>th</sup> St.  
"rolling" terrain

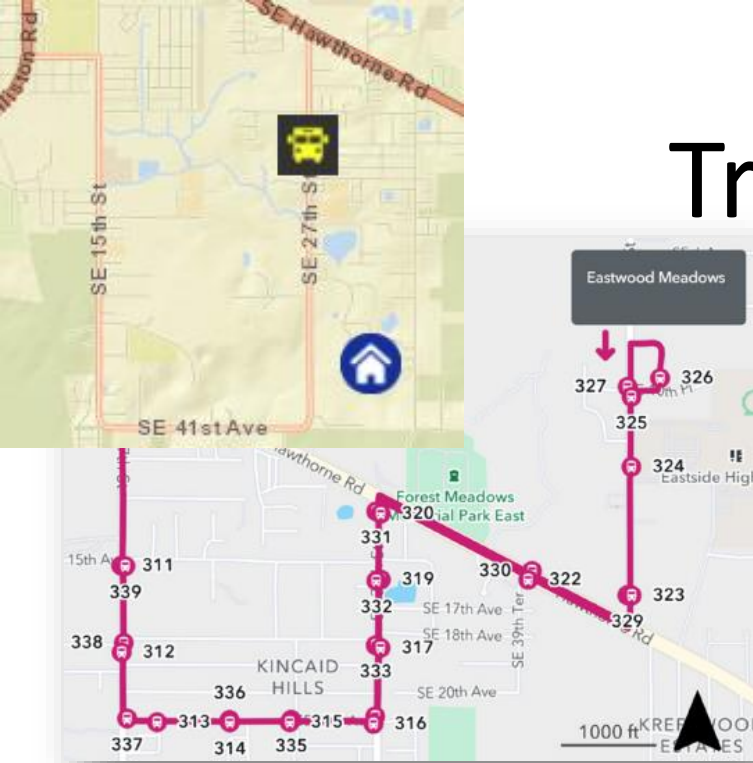


- 80-ft. Total right-of-way width.
- Observed "rolling" terrain restricts potential mid-block crossing locations on SE 27<sup>th</sup> St. (*proposed in Alt. 2*)
  - Vehicular sight-distance
  - ADA (cross-slope) criteria

More utilities on the west side of SE 27<sup>th</sup> St.

*Alternative 1, is the preferred alternative.*

# Transit/School Bus Access



- Regional Transit System (RTS) route 7 services the SE 27<sup>th</sup> St. corridor with 4 bus stop locations.
- **Stopping location on east side of SE 27<sup>th</sup> St.**



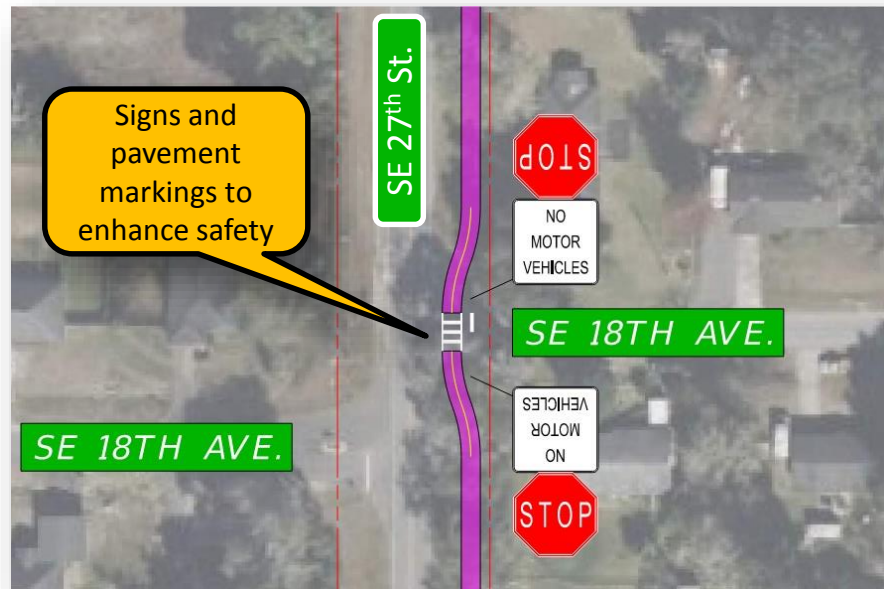
*Alternative 1, is the preferred alternative.*

- Services Lake Forest Elementary School, Lincoln Middle School, and Eastside High School.
- **School bus stop is located on the east side of SE 27<sup>th</sup> St. at SE 18th Ave.**

# Conflict Points and Severity

## Alternative 1

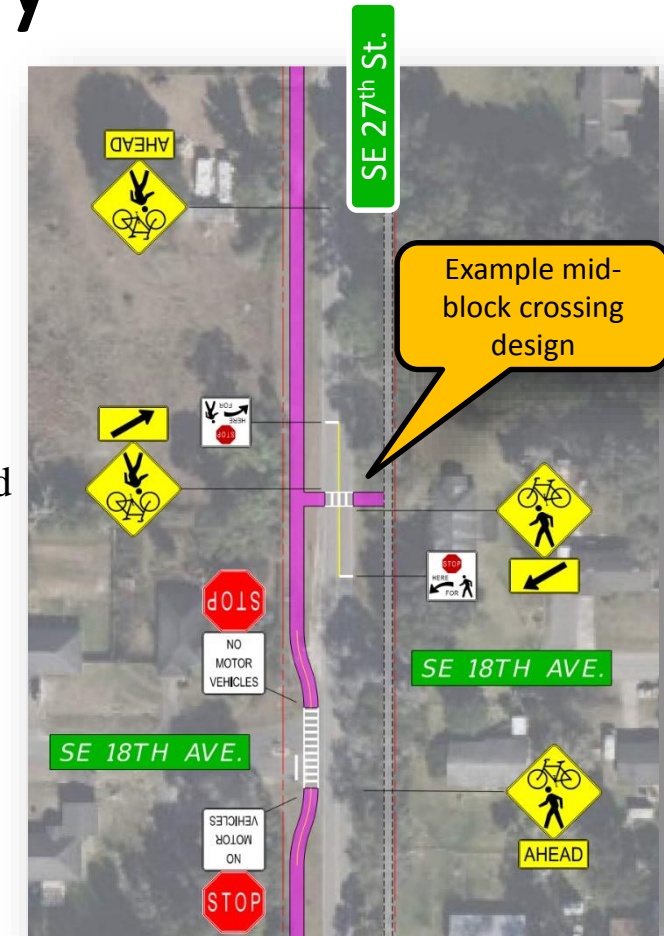
- 13 unsignalized side street crossings
- 18 driveways crossings
- Provides direct SUP access from adjacent community
- Safer alternative
- **Less severe conflict points**



## Alternative 2

- 4 unsignalized side street crossings
- 8 driveways crossings
- Requires minimum 2 mid-block crossings
- Required pedestrian lighting at crossing locations
- Doesn't provide direct SUP access from adjacent community
- Safety concerns with mid-block crossings and observed speeding.
- **More severe conflict points**

*Alternative 1, is the preferred alternative.*



# Drainage Accommodations



- Maintaining existing drainage patterns will be vital.
- Alternative 2 will have fewer impacts on existing drainage patterns.
- Alternative 1 will require a more comprehensive drainage design

*Alternative 2, is the preferred alternative.*



# Shade/Tree Canopy Accommodations



- Shade will help keep SUP users comfortable in the hot sun.
- Adequate shade will encourage users to the path.
- Alternative 1 provides better shade cover

*Alternative 1, is the preferred alternative.*

# Questions?

**James Link, PE**  
Civil Engineer II  
Public Works  
jlink@alachuacounty.us  
352.548.1289 (office)

**Alison Moss, AICP**  
Transportation Planning Manager  
Growth Management  
amos@alachuacounty.us  
352-374-5249 ext. 4574 (office)