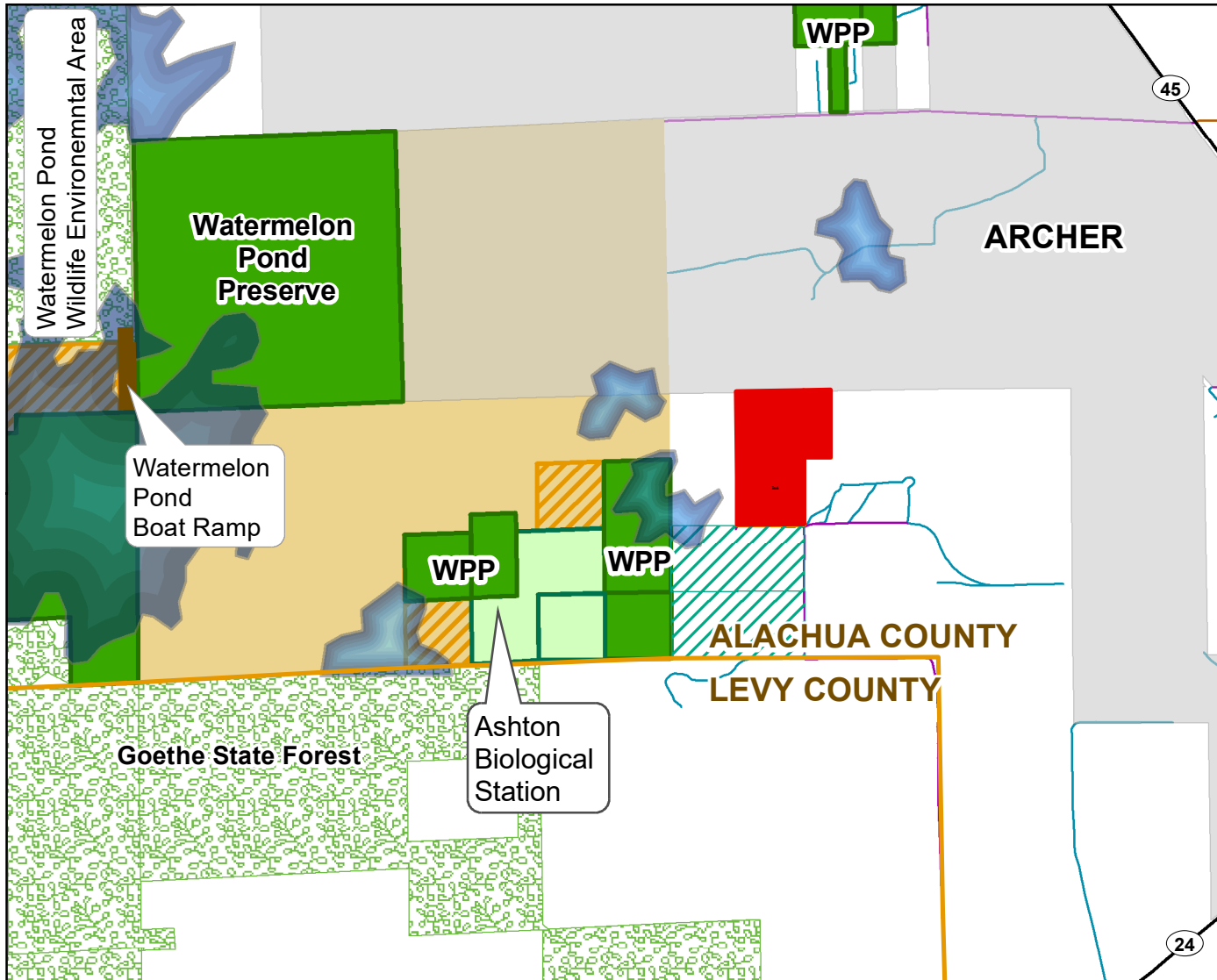
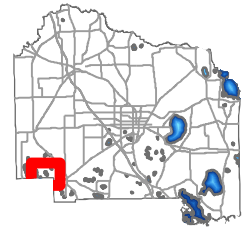




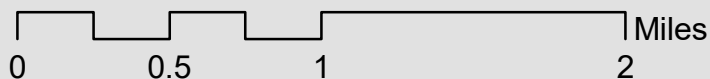
Watermelon Pond - Biro Location Map



Legend

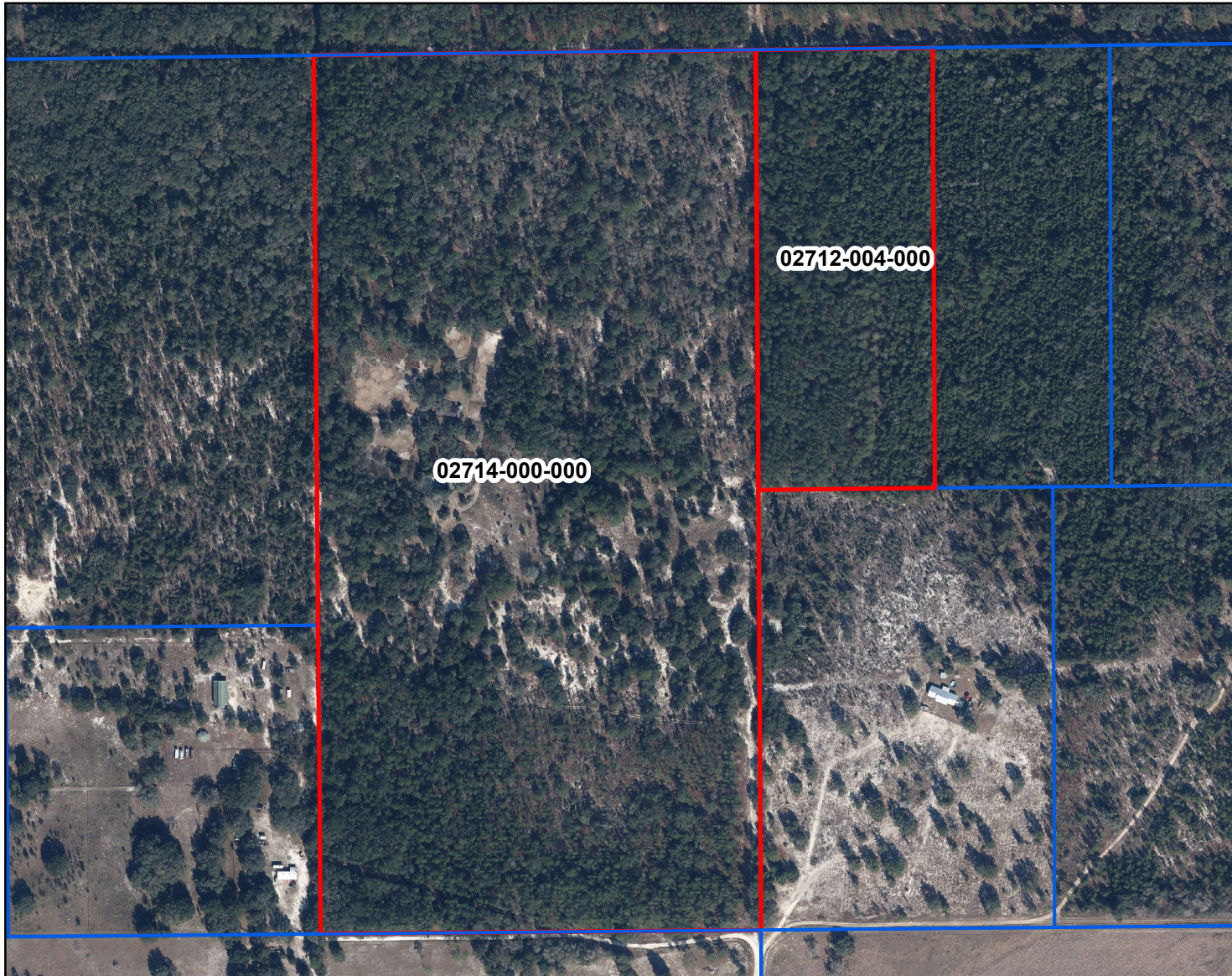
- Biro Parcels (95.88 ac)
- Watermelon Pond Preserve
- ACF Conservation Easement
- Conservation Lands
- Active Acquisition List
- Nominated Property
- ACF Project Areas
- Lakes
- Municipal Boundaries
- County Boundary

WPP = Watermelon Pond Preserve





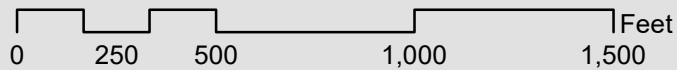
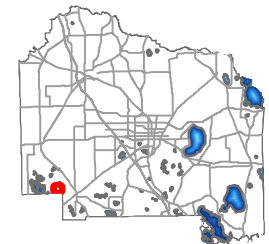
DISCLAIMER: This map and the spatial data it contains are made available as a public service, to be used for reference purposes only. The Alachua County Environmental Protection Department provides this information AS IS without warranty of any kind. The quality of the data is dependent on the various sources from which each data layer is obtained.

Watermelon Pond - Biro Parcel Map



Legend

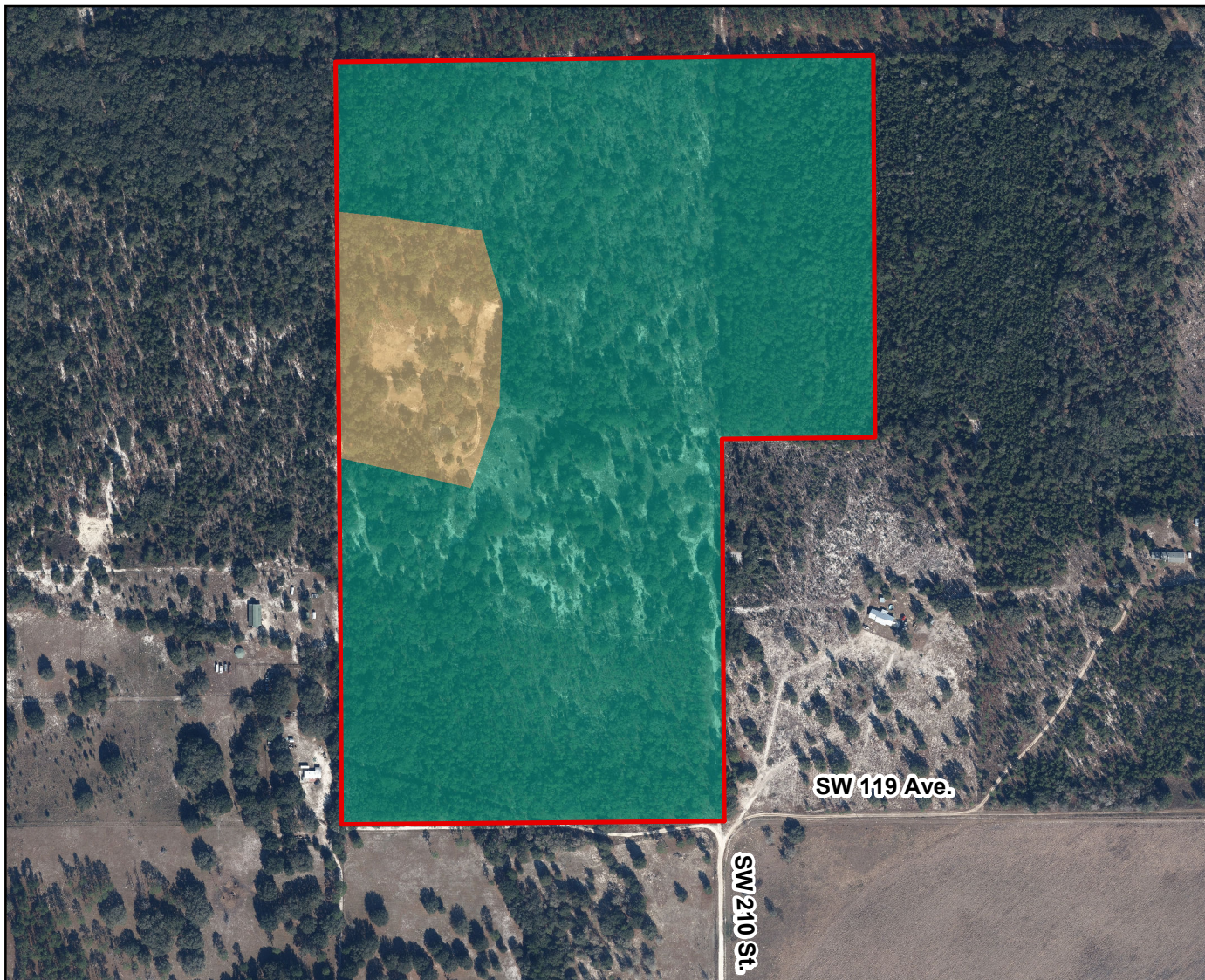
-  Biro Parcels (95.88 ac.)
-  ACPA Parcels




DISCLAIMER: This map and the spatial data it contains are made available as a public service, to be used for reference purposes only. The Alachua County Environmental Protection Department provides this information AS IS without warranty of any kind. The quality of the data is dependent on the various sources from which each data layer is obtained.




Watermelon Pond - Biro CE Zones Map



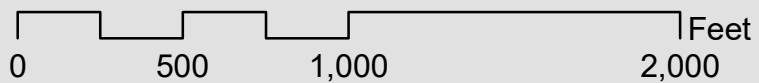
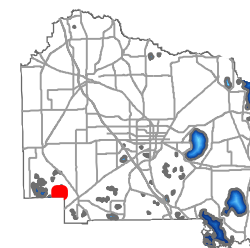
Legend

 Biro Boundary (~95.88 ac)

Zone_ID

 Building Envelope (~ 11 ac)

 Preservation (~ 84.88 ac)



DISCLAIMER: This map and the spatial data it contains are made available as a public service, to be used for reference purposes only. The Alachua County Environmental Protection Department provides this information AS IS without warranty of any kind. The quality of the data is dependent on the various sources from which each data layer is obtained.