

Results of Assessment: Street Outreach Programming in North Central Florida

diiv sternman

Senior Technical Assistance Specialists

dsternman@naeh.org

The National Alliance to End Homelessness is a nonprofit, non-partisan, organization committed to preventing and ending homelessness in the United States.

Policy and Programs

- Carries out the vital work of educating policymakers and the field about key strategies and policies for ending and preventing homelessness.
- Keeps federal policymakers and legislators informed of the needs of people experiencing homelessness and the programs serving them.
- Leads advocacy efforts on a grassroots level.

Capacity Building

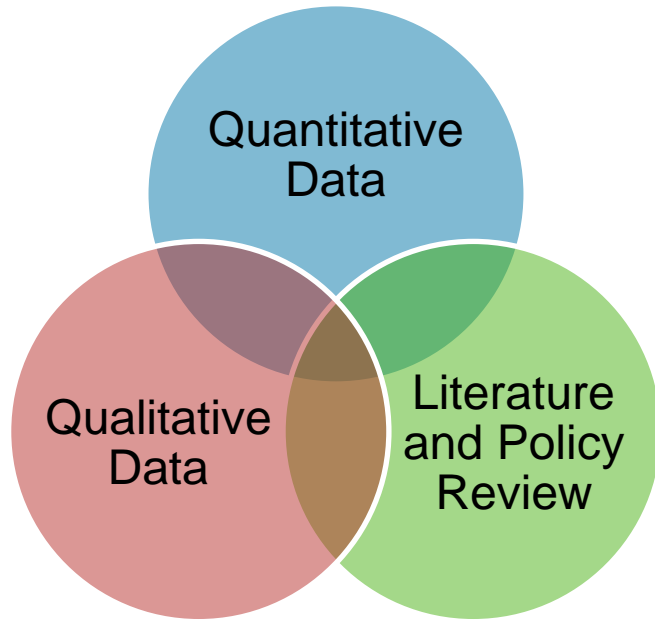
- Supports efforts to end homelessness by offering training and technical assistance tailored to communities' unique needs.
- Helps design and implement crisis systems, improve systems' performance, and utilize data to end homelessness, particularly with an equity lens.
- Provides online courses, trainings, and webinars to inform the field of best practices to end homelessness.

Homelessness Research Institute

- Analyzes data to identify homelessness trends on national, local, and Continuum of Care levels.
- Publishes research that ensures policymakers, practitioners, the media, and the public have the best information about trends and emerging solutions to the problem.
- Uses an equity lens to identify disparities in homelessness data.

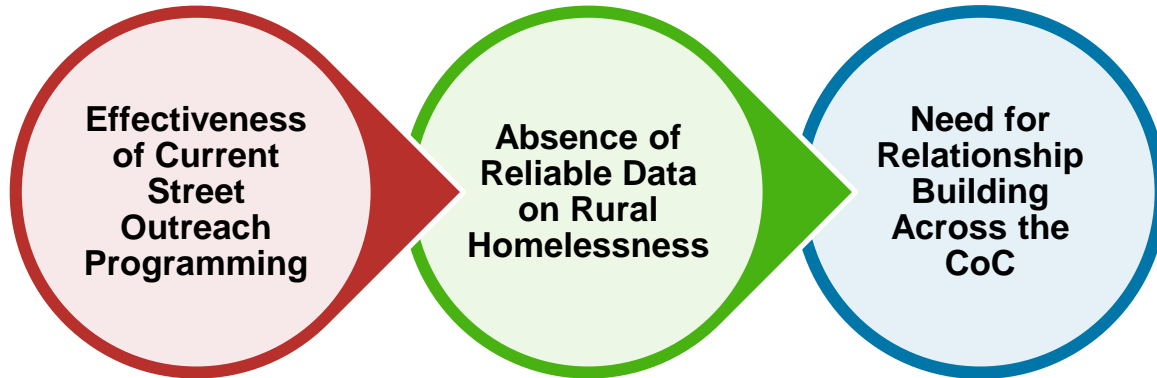
Lived Experience Innovation + Strategic Communications

Approach to Analysis



- Point in Time Counts
- Program Outcomes
- Funding
- Stakeholder Surveys
- Key Informant Interviews
- Research and Evidence
- Continuum of Care Policies
- Street Outreach Program Policies

Key Findings



I was raised in Gainesville... They need to take a look at how many people are living in tents, what resources they have and help place us somewhere. I just want a place to live.

– person with lived experience of unsheltered homelessness interviewed in Gainesville

Effectiveness of Current Street Outreach Programming

- The sole CoC-funded street outreach provider:
 - operates a high functioning, best practice program,
 - provides high quality services,
 - connects people who are homeless outdoors to permanent housing,
 - and operates efficiently, but not does not provide coverage for the entire CoC.
- Funding and staffing levels are insufficient to meet the needs of entire CoC.
- Access to street outreach in Bradford, Gilchrist, Levy, and Putnam Counties is inadequate.



Absence of Reliable Data on Rural Homelessness

- Data for people experiencing unsheltered homelessness in the four primarily rural counties is unreliable or absent from PIT counts.
- CES access points do not exist outside of Gainesville city limits.
 - Providers in the underserved rural counties do not know how to access or advise anyone how to access CES for assessment, prioritization, or referrals.
- Rural homelessness data is not reflected in HMIS and excludes housing status.



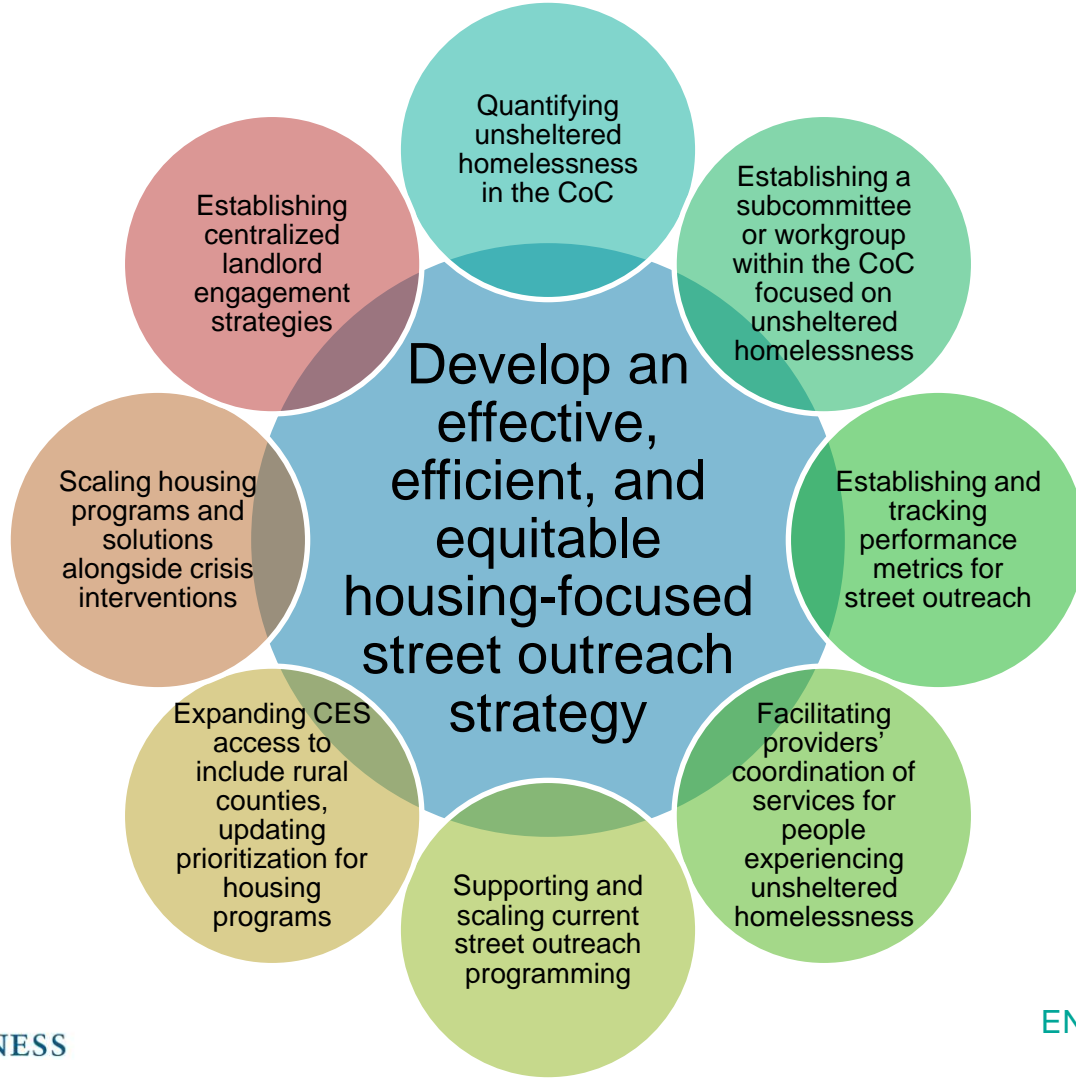
Need for Relationship Building Across the CoC

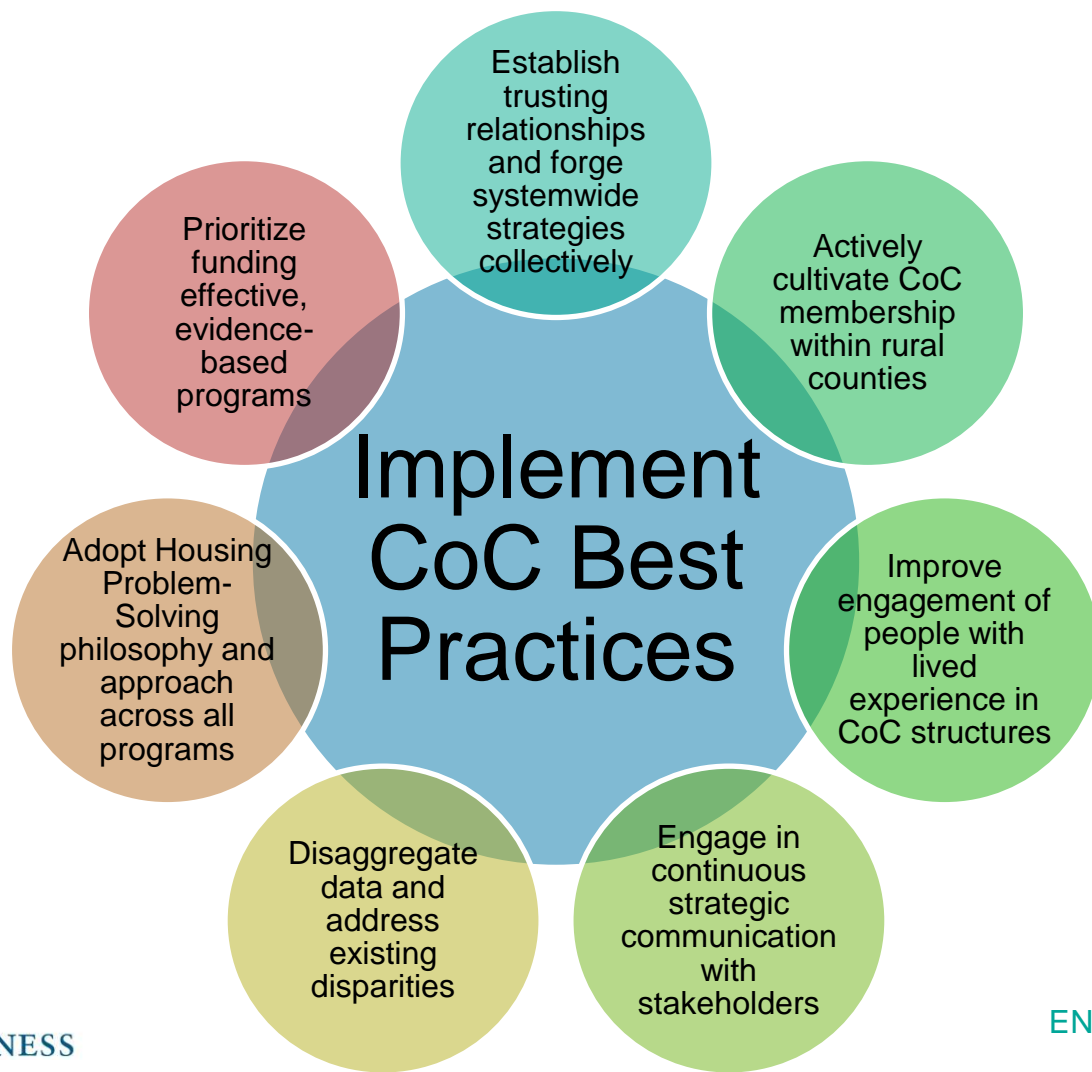
- Nearly half of service providers interviewed described disengaging or experiencing exclusion from CoC activities in which they had interest.
- Providers identified the transition to a new Lead Agency as a key opportunity for restoring relationships, re-establishing trust, and increasing engagement in the CoC across the region.



Recommendations

Based on our literature review of research and evidence, coupled with key findings above, the Alliance details 15 total recommendations, divided into two sections: develop an effective, efficient, and equitable housing-focused street outreach strategy and implement CoC best practices.





Questions?

diiv sternman

Senior Technical Assistance Specialist

Center for Capacity Building

dsternman@naeh.org

