

ACF Desk Top Evaluation  
 Project Name: Lake Santa Fe  
 Parcel Name: Wagner

<b>Size:</b>	5.35 acres		<b>Nominated By</b>	Richard Long Frank Wagner Land Trust
<b>Parcel #'s</b>	17485-020-000	5.35ac	<b>Acquisition Type</b>	Fee Simple
			<b>REPA Score</b>	N/A (Closest to Lake Santa Fe 6.87)
			<b>KBN Project/Score</b>	N/A (Closest to Lake Alto Swamp Ranked 31 of 47)
<b># Buildings</b>	1		<b>Elevation Range</b>	140-142 ft.
<b>Just Value</b>	\$13,375		<b>Bald Eagle Nests</b>	0 Onsite. 1 within 1 mile
<b>Total Value (Just, Misc, Bld)</b>	\$15,259		<b>FWC Species Model</b>	Black Bear, Bobcat, Alligator, Gopher Tortoise, Indigo Snake, Spotted Turtle, Wild Turkey, and Yellow Bat
<b>Asking Price</b>	N/A		<b>FNAI Element Occurrence</b>	N/A
<b>Future Land Use</b>	Rural/Agriculture		<b>FEMA 100 &amp; 500 year flood plain</b>	3.12 acres in 100-year floodplain
<b>Zoning</b>	Agricultural		<b>Archaeological Sites</b>	N/A

**Location:** The 5.35-acre Wagner property is in the northeast portion of the County, ¼ mile east of the city of Waldo. The property consists of one parcel (ACPA TPN 17485-020-000) under one ownership and has been nominated for fee simple acquisition. The parcel does not fall within either an ACF project area or Strategic Ecosystem. The closest ACF project area is Lake Santa Fe located immediately east of the parcel. The property has approximately 645 ft of public road frontage on NE 145 Ln (“Waldo Canal Road”), and there is a small boat ramp and canal leading to Lake Alto just north of the property owned by the City of Waldo.

**Special Designations:** N/A

**Land Cover:** GIS layers show that the property is 98% forested wetland. Aerial images seem to align with this estimate. The parcel does not appear to have been significantly cleared historically based on aerial imagery dating back to 1938.

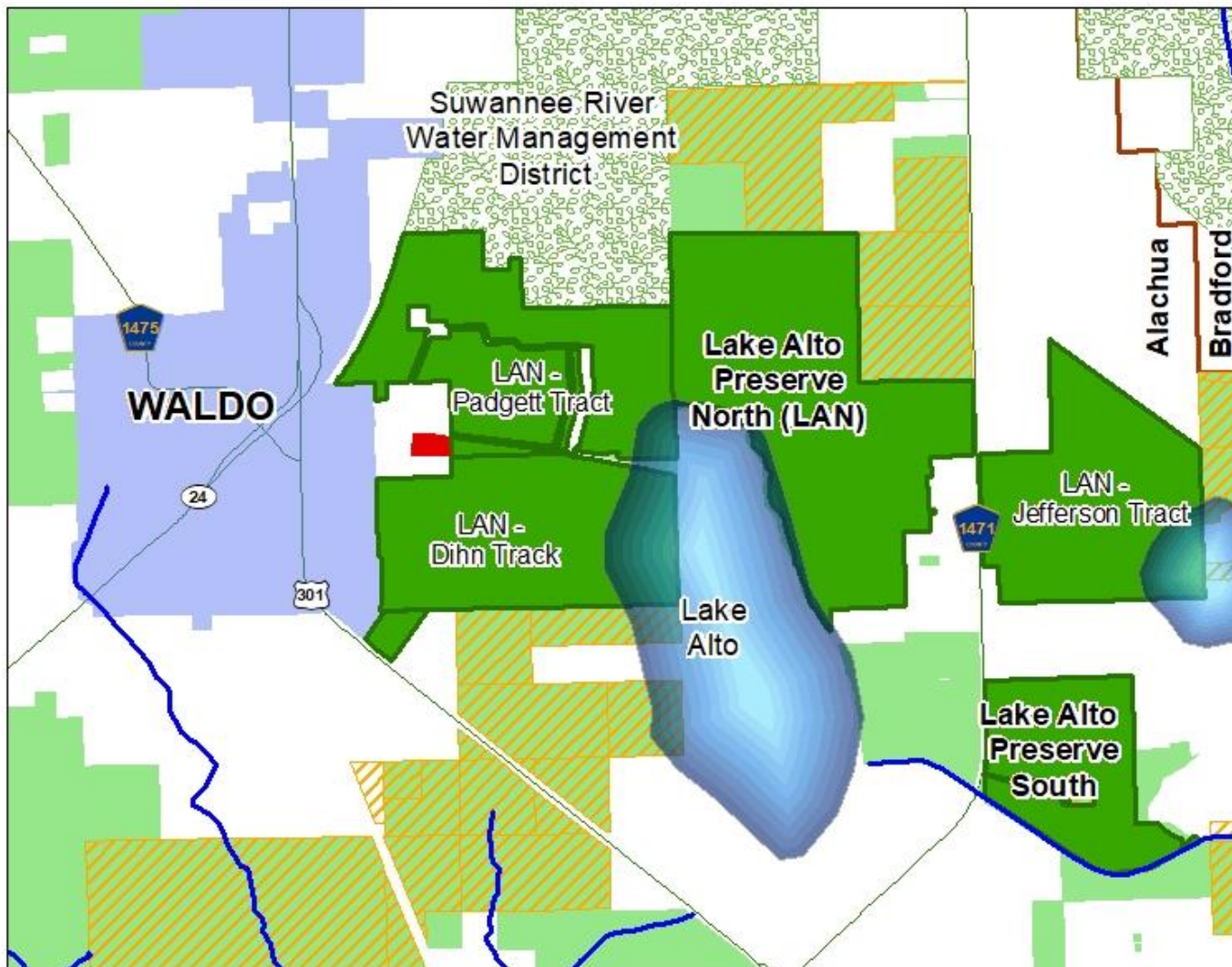
**Conservation Land Context:** The property is immediately west of Lake Alto Preserve – North (Padgett acquisition).

**Other:** Staff viewed the property from the road and identified a couple of old, dilapidated RV’s located in the small upland portion of the property.

**Maps:** Location Map, Parcel Map, and Wetlands Map,

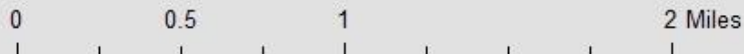


# Lake Santa Fe - Wagner Location Map



## Legend

- Alachua County Creeks
- Lakes
- Wagner Parcel (5.35 ac)
- ACF Preserve
- Active Acquisition
- ACF Project Areas
- Partner Conservation Lands
- County Boundary
- Waldo
- Major Road

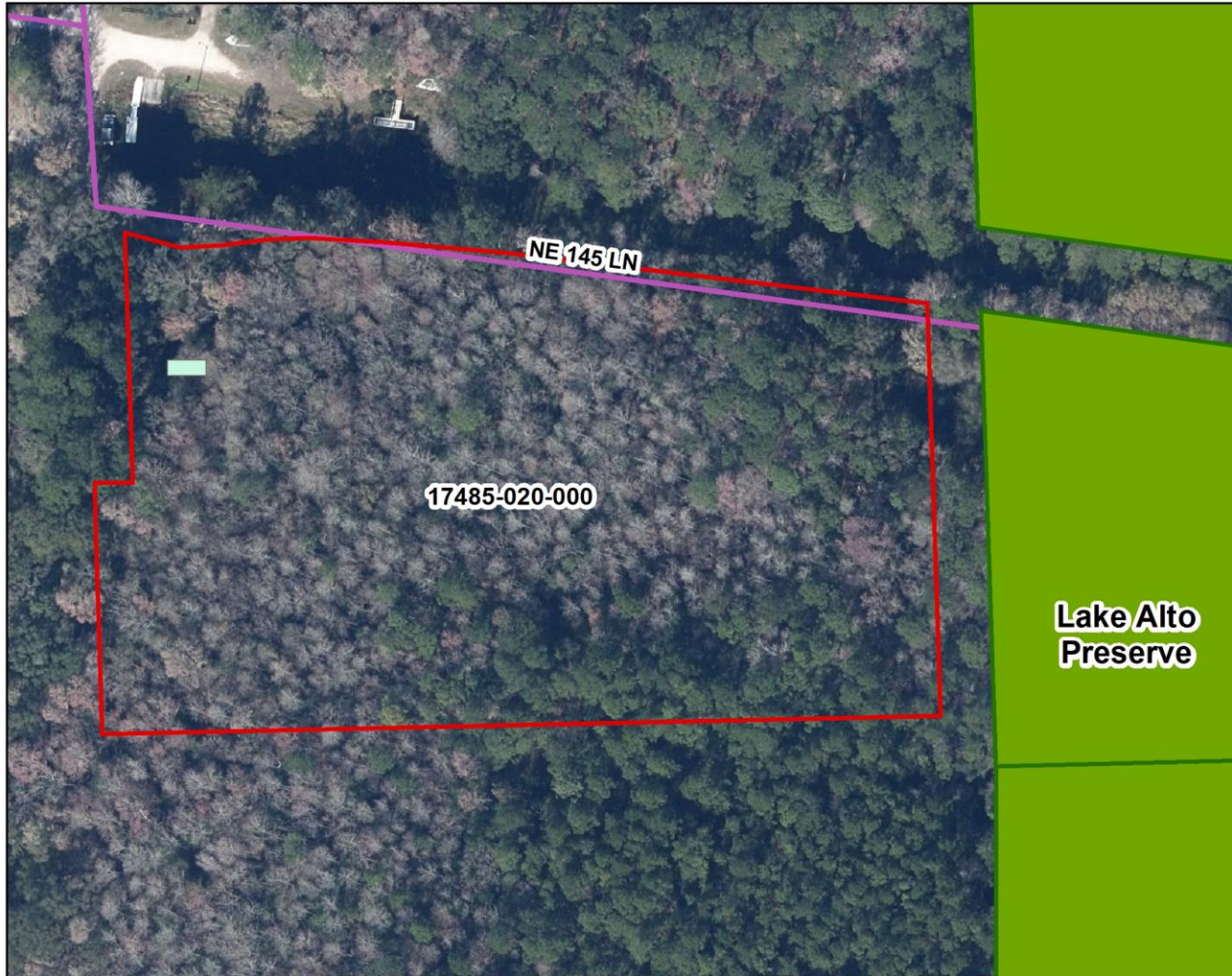


DISCLAIMER: This map and the spatial data it contains are made available as a public service, to be used for reference purposes only. The Alachua County Environmental Protection Department provides this information AS IS without warranty of any kind. The quality of the data is dependent on the various sources from which each data layer is obtained.



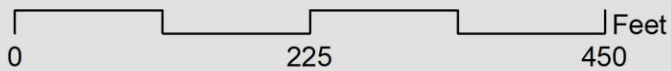


# Lake Santa Fe - Wagner Parcel Map



## Legend

- Wagner Parcel (5.35 ac)
- ACF Preserve
- Building Footprints



DISCLAIMER: This map and the spatial data it contains are made available as a public service, to be used for reference purposes only. The Alachua County Environmental Protection Department provides this information AS IS without warranty of any kind. The quality of the data is dependent on the various sources from which each data layer is obtained.





# Lake Santa Fe - Wagner Wetland Map



## Legend

- Wagner Parcel (5.35 ac)
- BuildingFootprints
- Wetland Clip (5.23 ac.)
- ACF Preserve
- Lake Santa Fe Project Area
- Lake Alto Swamp Strategic Ecosystem
- Parcels



0 250 500 Feet

DISCLAIMER: This map and the spatial data it contains are made available as a public service, to be used for reference purposes only. The Alachua County Environmental Protection Department provides this information AS IS without warranty of any kind. The quality of the data is dependent on the various sources from which each data layer is obtained.