

ACF Desk Top Evaluation  
 Project Name: Mill Creek Parcel  
 Name: Williams-Rauscher  
 6/27/2024

<b>Size:</b>	5 acres		<b>Nominated By</b>	Kathryn Williams
<b>Parcel #'s</b>	02915-010-009	5 ac	<b>Acquisition Type</b>	Donation
			<b>REPA Score</b>	7.4 of 9.44 Mill Creek
			<b>KBN Project/Score</b>	Mill Creek ranked 9 of 38
<b># Buildings</b>	0		<b>Elevation Range</b>	100-136 ft
<b>Just Value</b>	\$90,000		<b>Bald Eagle</b>	N/A
<b>Total Value (Just, Misc, Bld)</b>	\$90,000		<b>FWC Species Model</b>	Bobcat, Coopers hawk, Gopher tortoise, Eastern indigo snake, Peninsula Mole Skink, Wild turkey, Yellow bat
<b>Asking Price</b>	N/A		<b>FNAI Element Occurrence</b>	Caddisfly w/in 0.25 mile (year 1999)
<b>Future Land Use</b>	Rural/Agriculture		<b>FEMA 100 &amp; 500-year flood plain</b>	2.5 ac in 100-yr flood plain
<b>Zoning</b>	Agriculture		<b>Archaeological Sites</b>	4 w/in a mile

**Location/ Connectivity:** The Williams-Rauscher property is in northwestern Alachua County, north of Alachua. The parcel does not currently share a boundary with existing conservation lands, but it is in the Mill Creek ACF Project Area and is within 1.5 miles northwest of the Rembert Conservation Easement. It has approximately 200 ft of public road frontage on CR 241. A little over 200 ft of Mill Creek also runs through the property. A part of this creek system (Townsend's Branch) flows through Mill Creek Preserve.

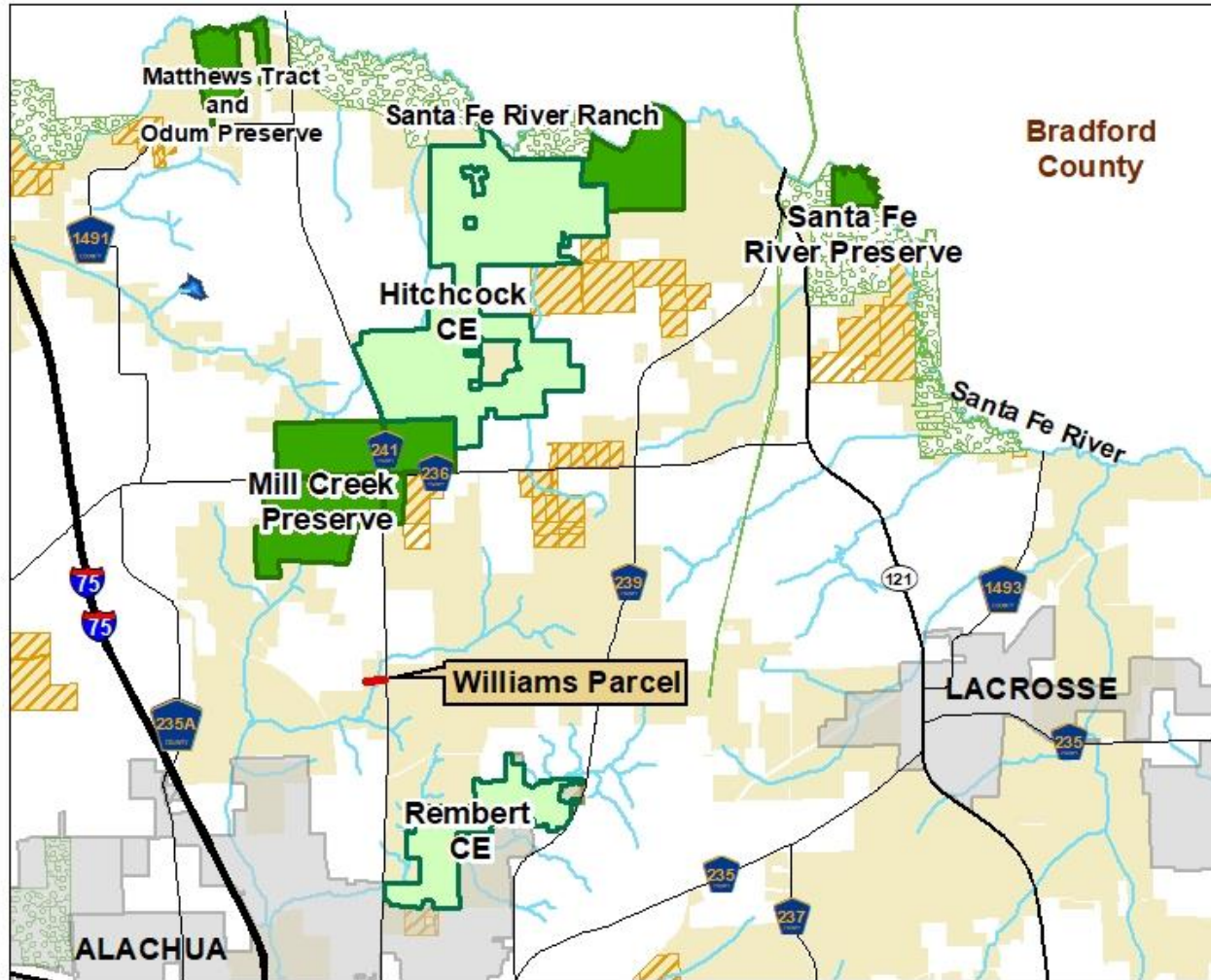
**Special Designations:** There are no special designations for this parcel.

**Land Cover:** Based on aerial imagery and a quick site visit, the natural communities within the parcel include a stream, bottomland forest (the 2.5 acres of the parcel within the 100-yr floodplain), and the remaining acreage outside the floodplain seems to be either upland mixed or upland hardwood forest. The western side of the property has been cleared for agricultural use historically based on aerial imagery dating back to 1938.

**Maps:** Location, Parcel, Surrounding parcels

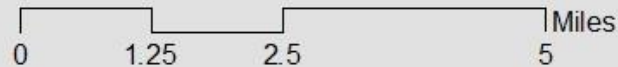


# Mill Creek - Williams (Donation) Location Map



### Legend

- Williams Parcel (5 ac)
- ACF Preserve
- Conservation Easement
- Municipal Boundaries
- Partner Conservation Lands
- Active Acquisition List
- ACF Projects





DISCLAIMER: This map and the spatial data it contains are made available as a public service, to be used for reference purposes only. The Alachua County Environmental Protection Department provides this information AS IS without warranty of any kind. The quality of the data is dependent on the various sources from which each data layer is obtained.

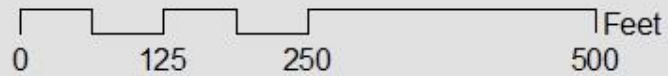


# Mill Creek - Williams (Donation) Parcel Map



## Legend

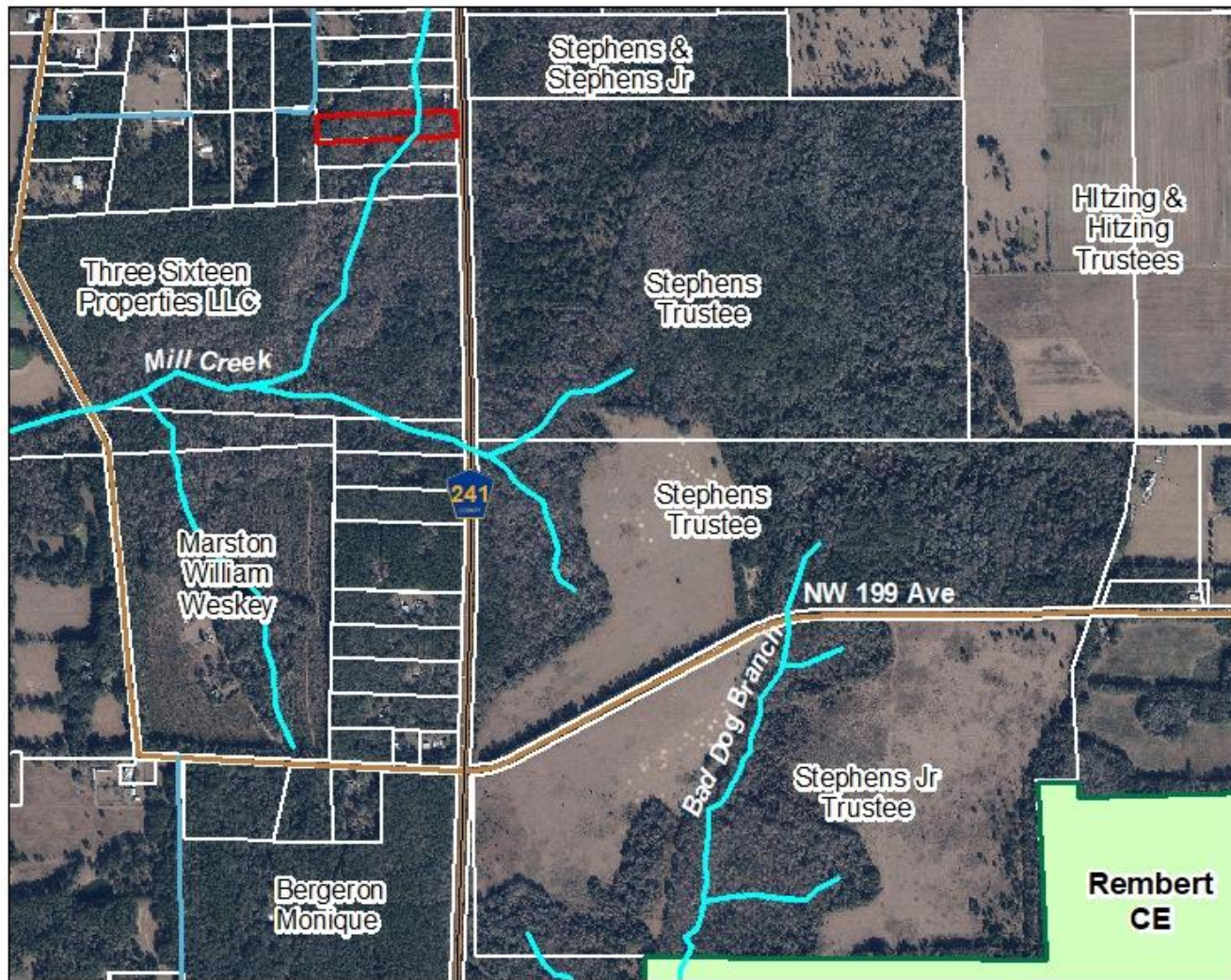
-  Williams Parcel (5 ac)
-  Alachua County Creeks



DISCLAIMER: This map and the spatial data it contains are made available as a public service, to be used for reference purposes only. The Alachua County Environmental Protection Department provides this information AS IS without warranty of any kind. The quality of the data is dependent on the various sources from which each data layer is obtained.

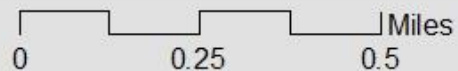


# Mill Creek - Williams (Donation) Surrounding Parcel Map



### Legend

- Williams Parcel (5 ac)
- Conservation Easement
- Alachua County Creeks



DISCLAIMER: This map and the spatial data it contains are made available as a public service, to be used for reference purposes only. The Alachua County Environmental Protection Department provides this information AS IS without warranty of any kind. The quality of the data is dependent on the various sources from which each data layer is obtained.