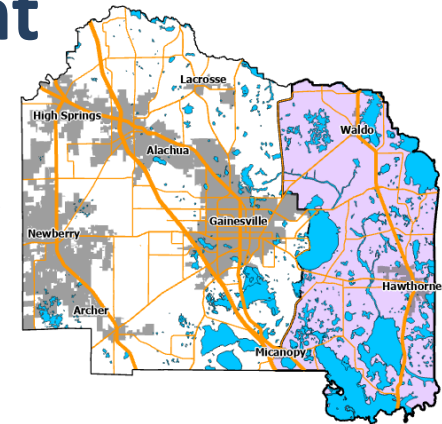
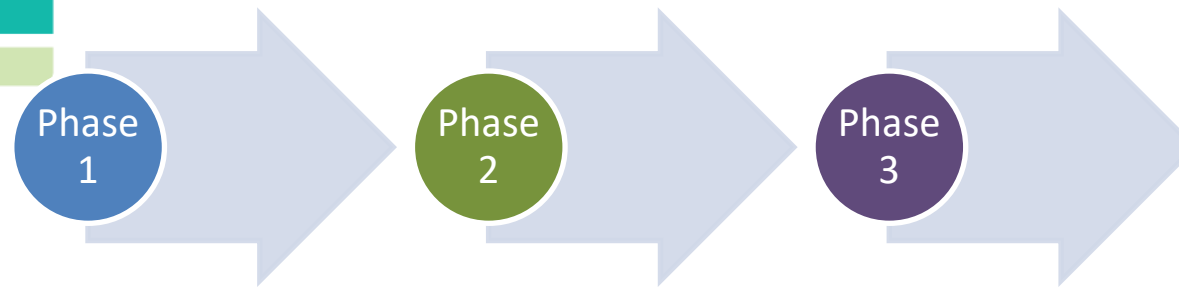




Project Map & Work Scope

301 Corridor- Eastern County Community Needs Assessment



August 8, 2024



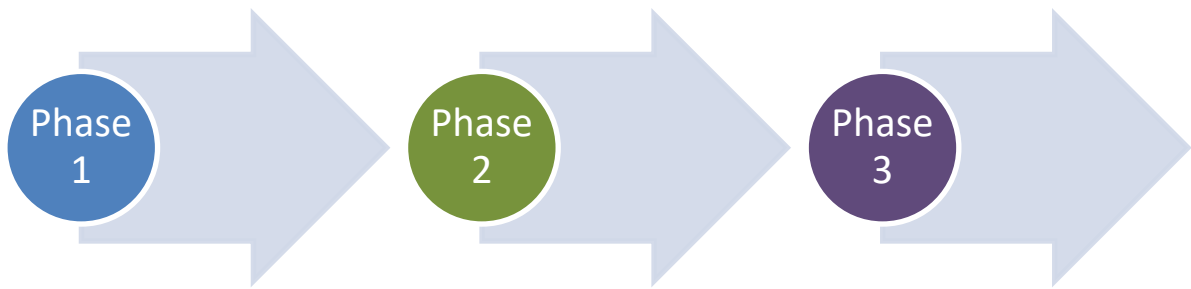
Contents

- Project Description and Purpose
- Draft Project Map
- Project Components
- Project Phases and Budget Considerations
- Deliverables
- Timeline



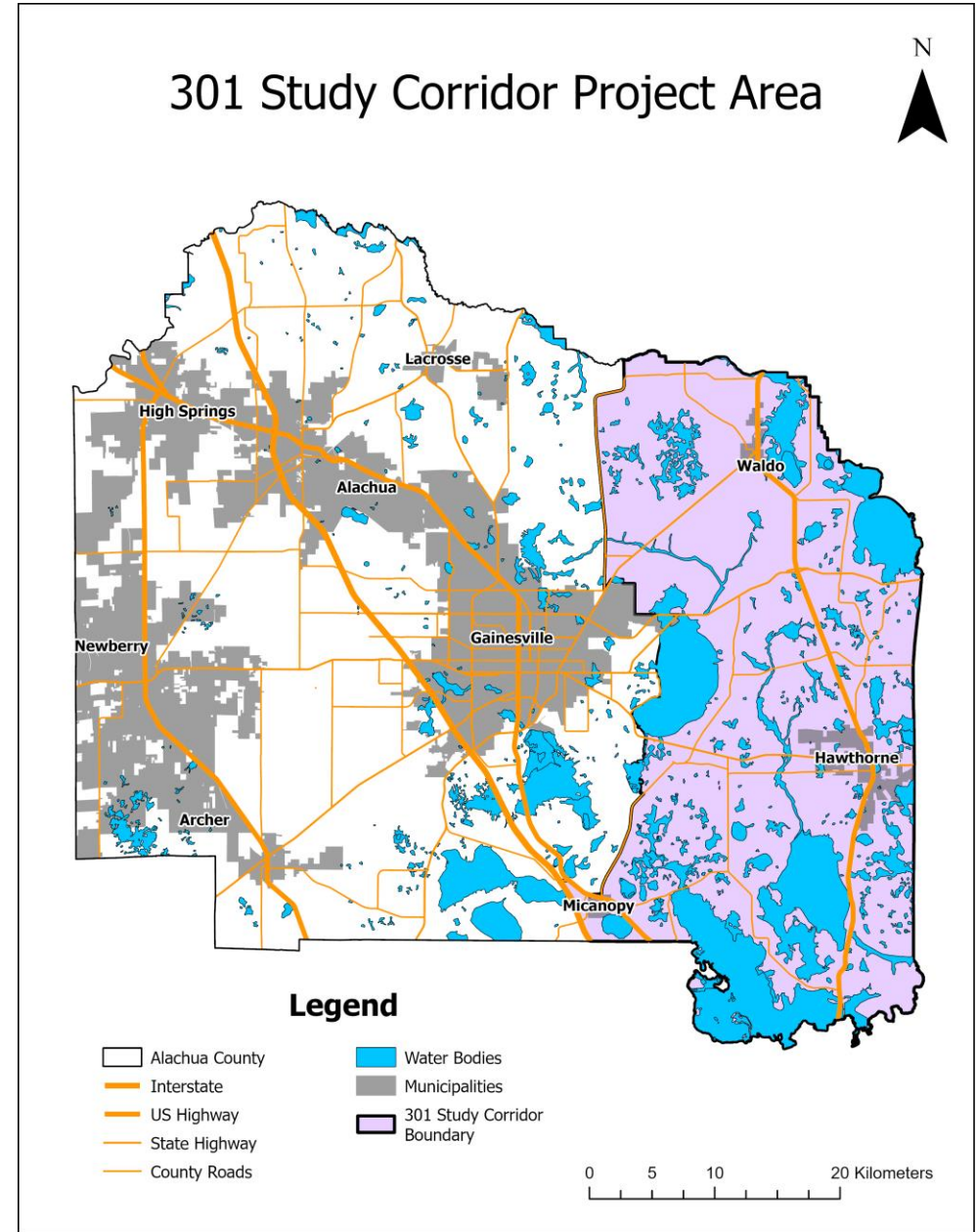
Project Description and Purpose

This study, divided into three phases, focuses on the unique needs of the 301 Highway Corridor in eastern Alachua County. This assessment will identify community service needs and economic development opportunities to attract grant funding and inform future County initiatives.



301 Study Project Area

The study area includes, but is not limited to, the municipalities of Hawthorne, Waldo, and Micanopy and the unincorporated communities of Montechocha, Melrose, Island Grove, and rural clusters.



Study Area

- Total Population – 18,665
- Total Acreage – 210,373
- Square Miles – 594
- Residential Units – 6,799
- Commercial Acreage – 594
- Agricultural Acreage- 134,555

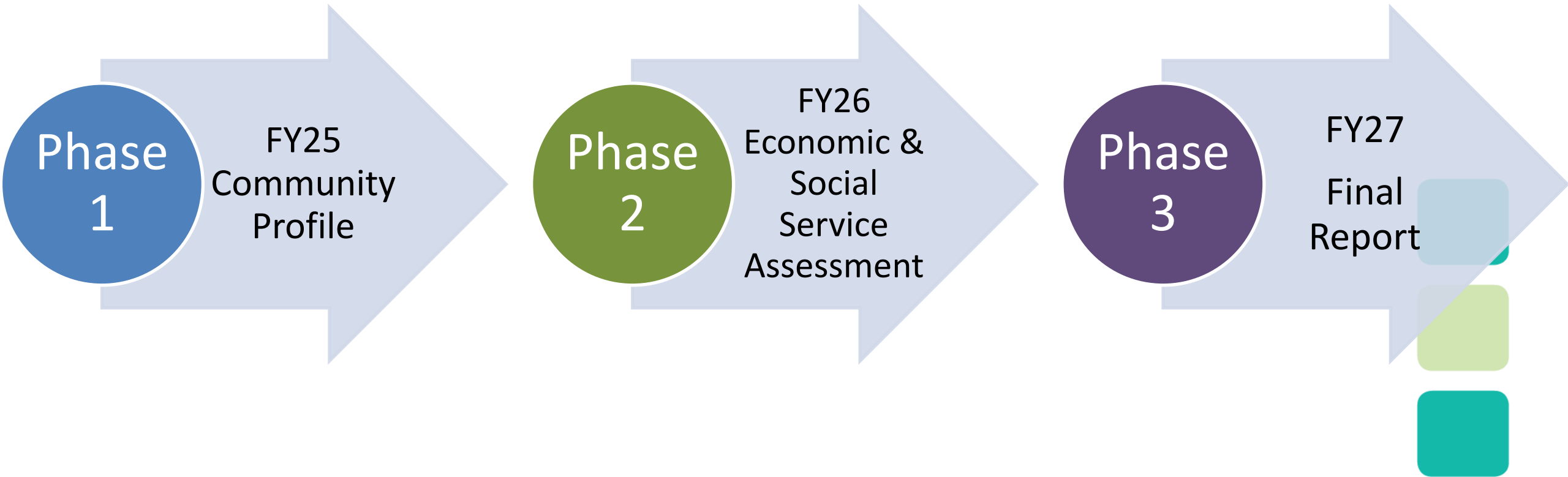


Project Components

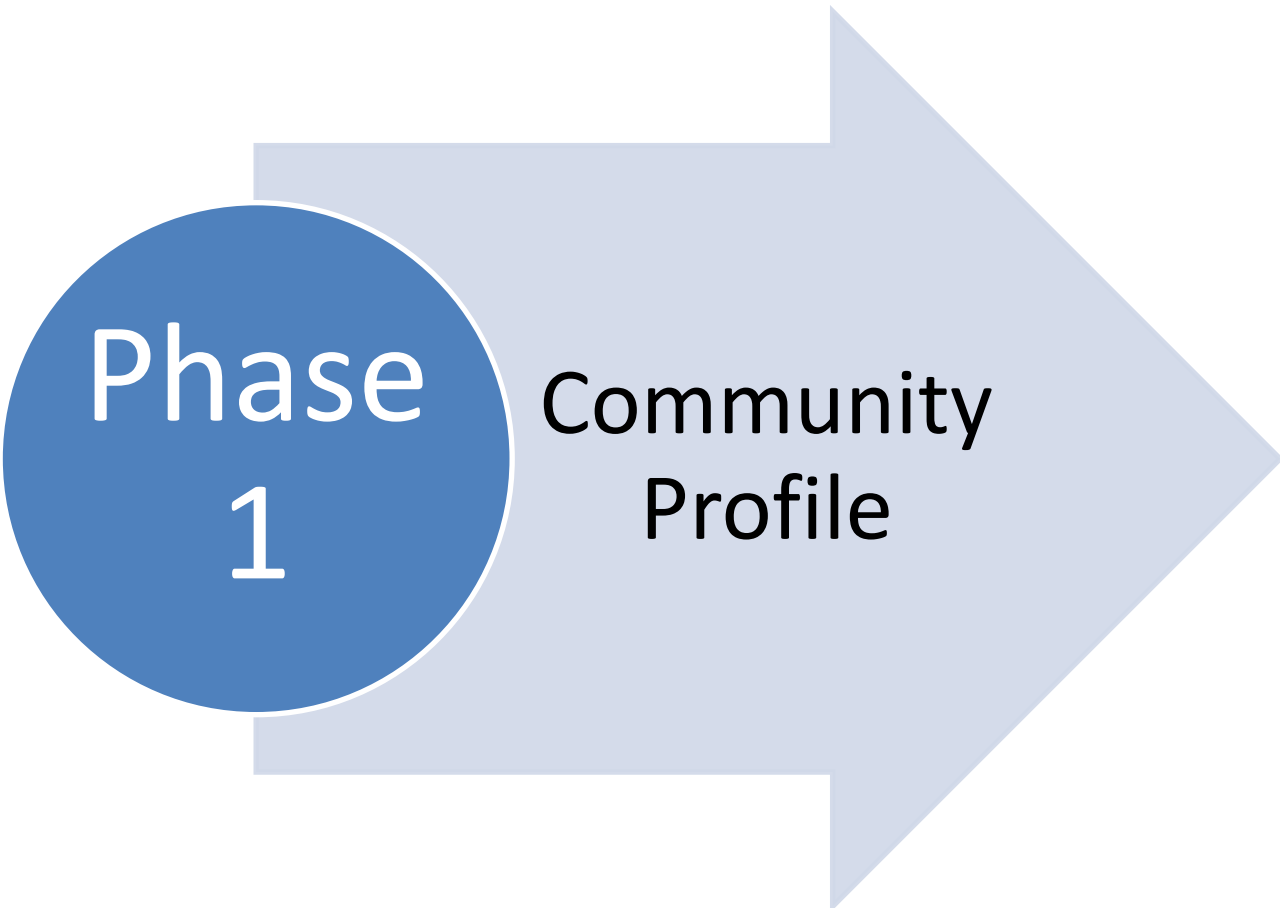
- Existing Data Collection
- Stakeholder Engagement
- Data Analysis (existing and from stakeholders)
- Report Findings and Recommendations
- Prioritize Needs/Actions
- Grant Funding Identification



Project Phases



Project Phases



FY24-FY25 BoCC Staff Led

- Develop a draft study area map for Board approval
- Identify existing data relevant to the Needs Assessment - demographics, housing, transportation, environmental factors
- Comprehensive Outreach Plan with Critical Stakeholders - public input, gathering information from Community Health Workers, Contact with Clients, Surveys, Community Meetings
- Kick-Off Meeting - in Hawthorne
- Develop Scope of Work and RFP for consultants going into FY26
- Report Initial Findings to the Board



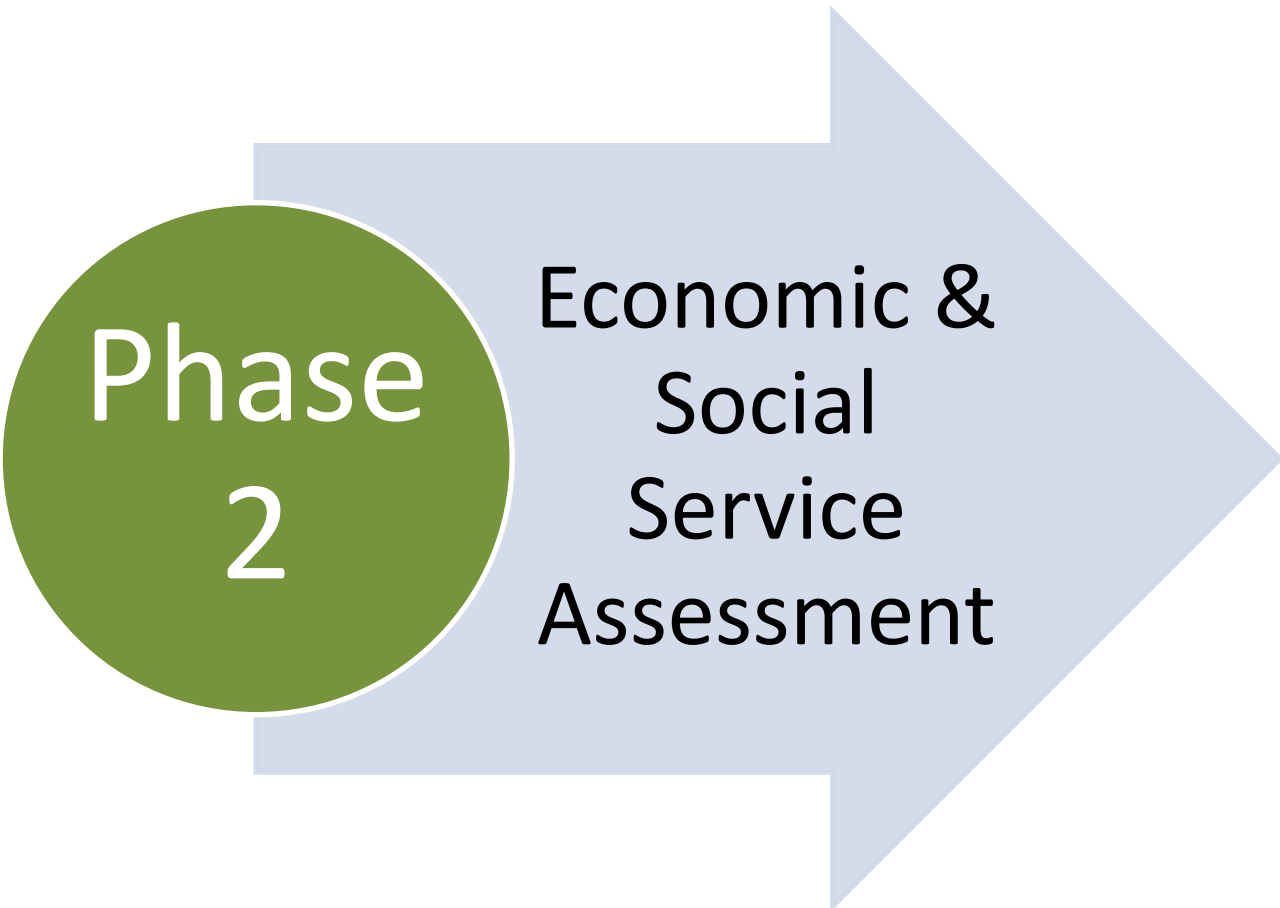
Budget Considerations

Phase
1/FY25

Community
Profile

- Community Engagement Meetings: Map Development, Public Relations, Printed Materials for Distribution \$10,000
- Survey Software \$40,000
- Consultants \$100,000

Project Phases



FY26 Consultants & Staff Led

- Social Services Needs and Economic Development Assessment
- Climate Change Vulnerability Correlation



Budget Considerations

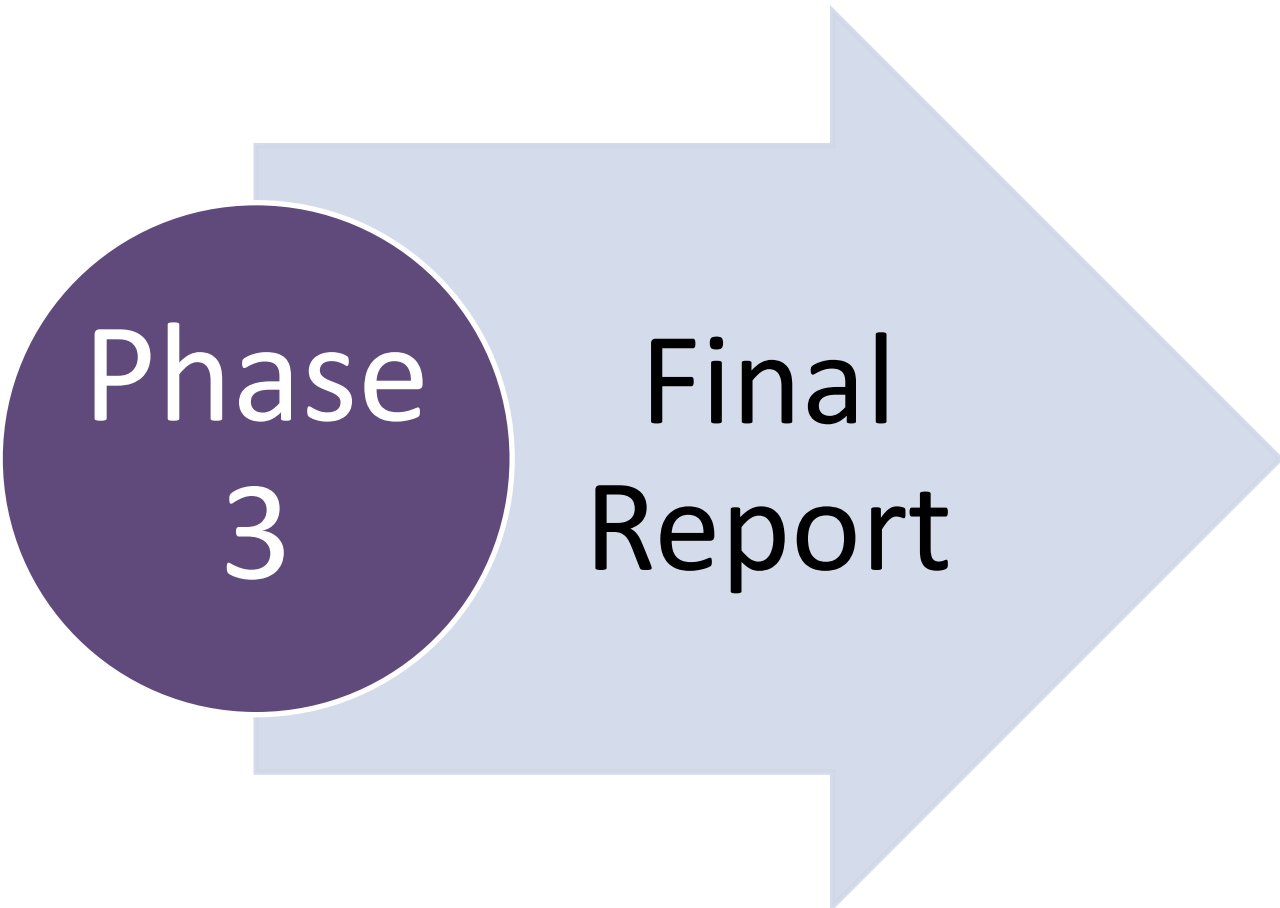
Phase
2/FY26

Economic &
Social
Service
Assessment

Consultants \$400,000 TBD
based upon breadth of
scope.



Project Phases



Consultant Generated

- Mid-Project Report to the Board
- Develop a grant-ready strategy to address identified needs.
- Identify Grant Funding Opportunities
- Identify Non-Grant eligible funding needs
- Final Report and Recommendation



Budget Considerations

Phase
3/FY27

Final
Report

To Be Estimated

- Economic Development Incentives
- Transportation
- Education
- Social Service Needs



Deliverables

- Final Report & Needs Assessment (includes)
 - Public Engagement Summary
 - Data Analysis Report
 - Community Asset Map



Project Timeline

August: The board will meet to approve the draft study area map, work scope, phase 1 budget, and kick-off engagement plan.

October: Phase 1 begins. There will be a kick-off meeting in late October in Hawthorne (or a centrally located community space).

November - December: Continue community outreach and begin work on the scope of consultant work and budget estimates for FY26 budget development.

September 2025 – Phase 1 Report to the Board on Initial Findings on Community Characteristics and Lessons Learned from Outreach and Engagement.

October 2025: Phase 2 Begins – Consultants Procurement and Kickoff

January-February 2026: Consultant Starts Work

January 2027: Consultant mid-project Report and Presentation to the Board

October 2027: Final Report and Recommendations on Targeted Grants to Meet Community Needs



