



# POLICY MEETING:

## Enforcement of School Zone Speed Limits

Alison Moss, AICP  
Lieutenant Billy Beck



## Presentation Overview

1. Proposed Roll-out: Phased Approach
2. County to Advertise Ordinance
3. ACSO to Lead Procurement
4. Target Start Date: January 2025
5. 6-Month Check-in
6. Board Action



## Proposed Roll-out: Phased Approach

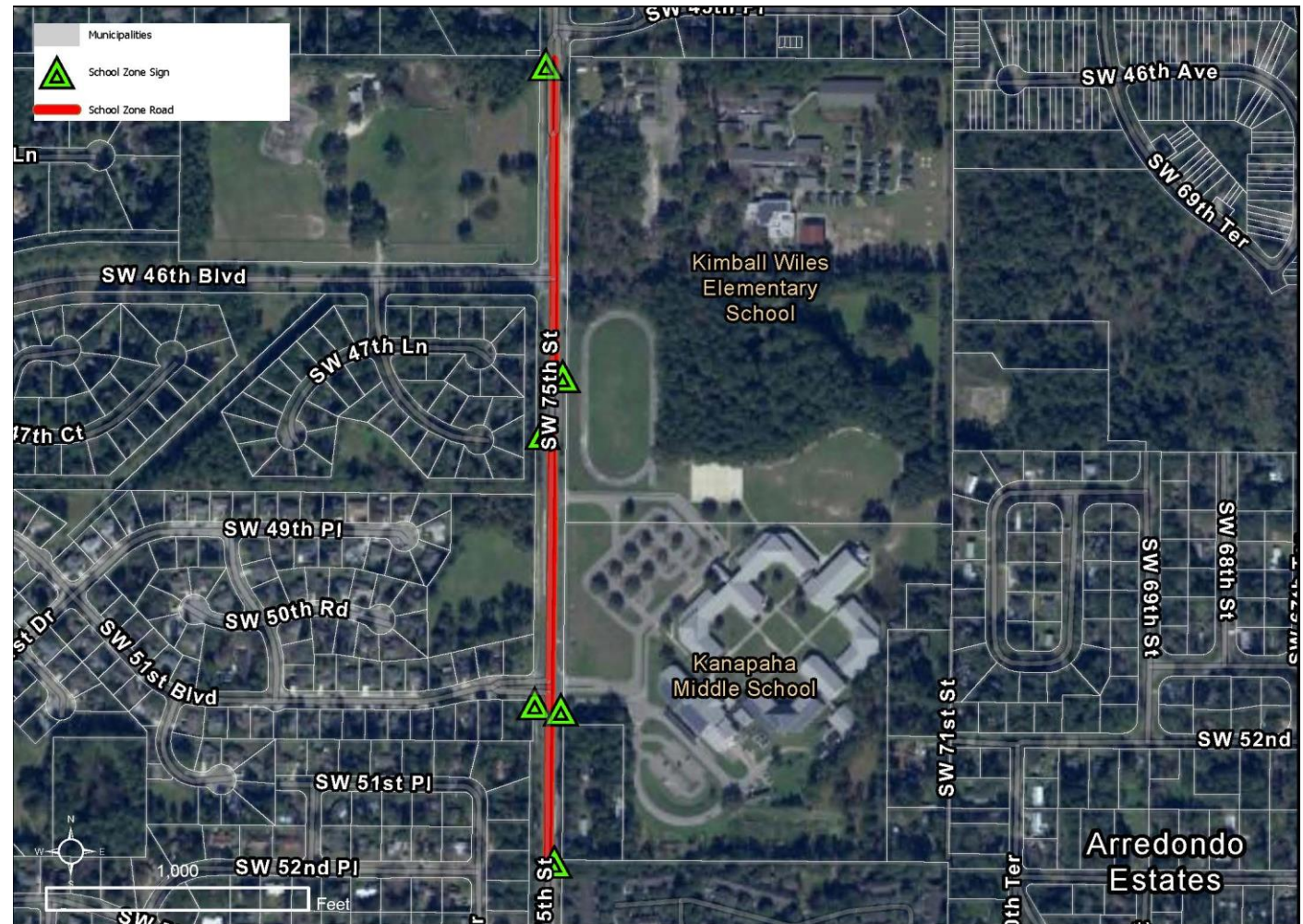
1. 2-4 school zones to start
2. Select based on safety, traffic, and demographic (including equity overlay) data
3. Allow agencies (ACSO and Clerk) to start small and assess staffing and budgetary needs associated with the program; scale up as able



# REFRESHER: Study – Locations of Heightened Risk

## School Zones Under Heightened Risk

Schools Studied	Street	Violators 10+ mph over
Archer Community Center	FL-45	351
Archer Elementary School	SW 170th St.	162
Ft. Clarke Middle School	NW 23rd Ave.	699
Hidden Oak Elementary School	Ft. Clarke Blvd.	1,025
Hidden Oak Elementary School	NW 23rd Ave.	1,394
Hawthorne High School	SE 69th Ave.	214
Shell Elementary School	SE Hawthorne Rd.	1,627
Shell Elementary School	US-301	167
Idylwild Elementary School	SW Williston Rd.	1,383
Kanapaha Middle School	SW 75th St.	1,955
Kimball Wiles Elementary School	SW 75th St	2,251

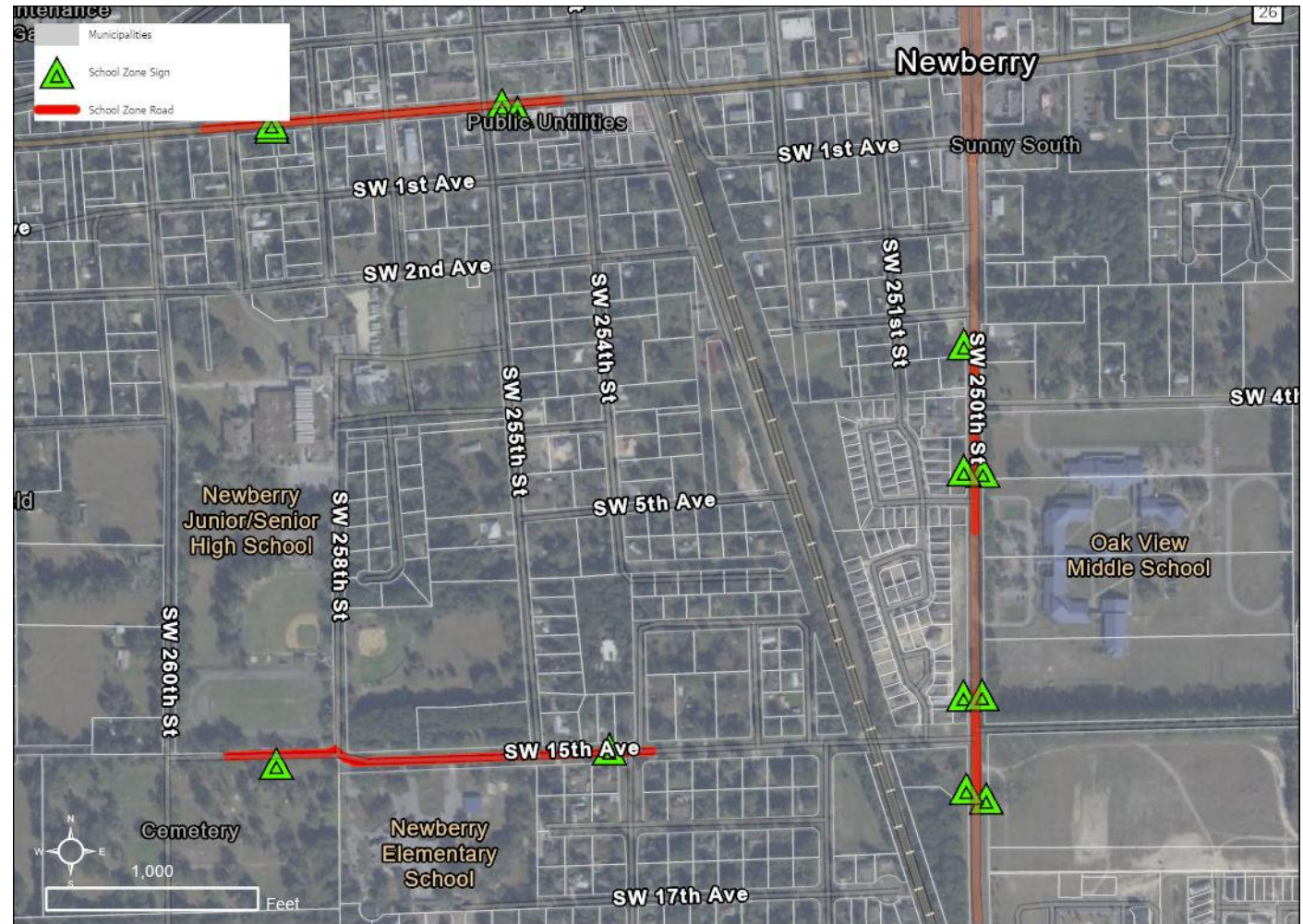




# REFRESHER: Study – Locations of Heightened Risk

## School Zones Under Heightened Risk

Schools Studied	Street	Violators 10+ mph over
Lake Forest Elementary	SE 43rd St.	292
Lawton M. Chiles Elementary School	School House Rd.	1,783
Lawton M. Chiles Elementary School	SW 24th Ave	580
Meadowbrook Elementary School	NW 39th Ave.	1,585
Newberry Elementary School	SW 15th Ave.	157
Newberry High School	W Newberry Rd.	636
Oakview Middle School (Zone 1)	SW 250th St.	281



## County to Advertise Ordinance

1. For simplicity, Ordinance references County Manager or Designee; Charter Offices have established a mutual understanding of program responsibilities
2. Staff recommend listing all 18 schools demonstrating “heightened risk” in the Ordinance; Doing so permits a limited roll-out/phased approach and future scaling



## ACSO to Lead Procurement

1. Alachua County Sheriff's Office to lead procurement effort for expediency
2. ACSO is anticipating a sole source procurement to ensure compatibility with existing ACSO equipment and operations
3. Staff propose that Sheriff's office lead procurement and the agreement with the selected vendor; County will lead the Ordinance.



## Target Start Date: January 2025

1. ACSO and County Staff think a January 2025 start date is reasonable for a small-scale roll-out
2. Between semesters is ideal for public awareness and general ease of implementation





## 6-Month Check-in

1. Progress report with 6 months of data:
  1. Number of Violations
  2. Number of Appeals
  3. Number of Citations
  4. Staff Hours (ACSO and Clerk)
  5. Revenue Generated
2. Discuss Program Performance
3. Discuss Program Expansion



- 1) Proceed with advertising the Ordinance related to Enforcement of School Zone Speed Limits.
- 2) Direct Staff to draft an Interlocal Agreement between the County and the Alachua County Sheriff's Office regarding program responsibilities and revenue-sharing.





# Questions?

**Alison Moss, AICP**

Transportation Planning Manager

Growth Management

[amoss@alachuacounty.us](mailto:amoss@alachuacounty.us)

352-374-5249 ext. 4574 (office)

