



# Little Lake Santa Fe Preserve 10-Year Management Plan

May 28, 2024



# Alachua County Forever Program

To acquire, improve, and manage environmentally significant lands that protect water resources, wildlife habitats and natural areas suitable for resource-based recreation.



Alachua County,  
Florida

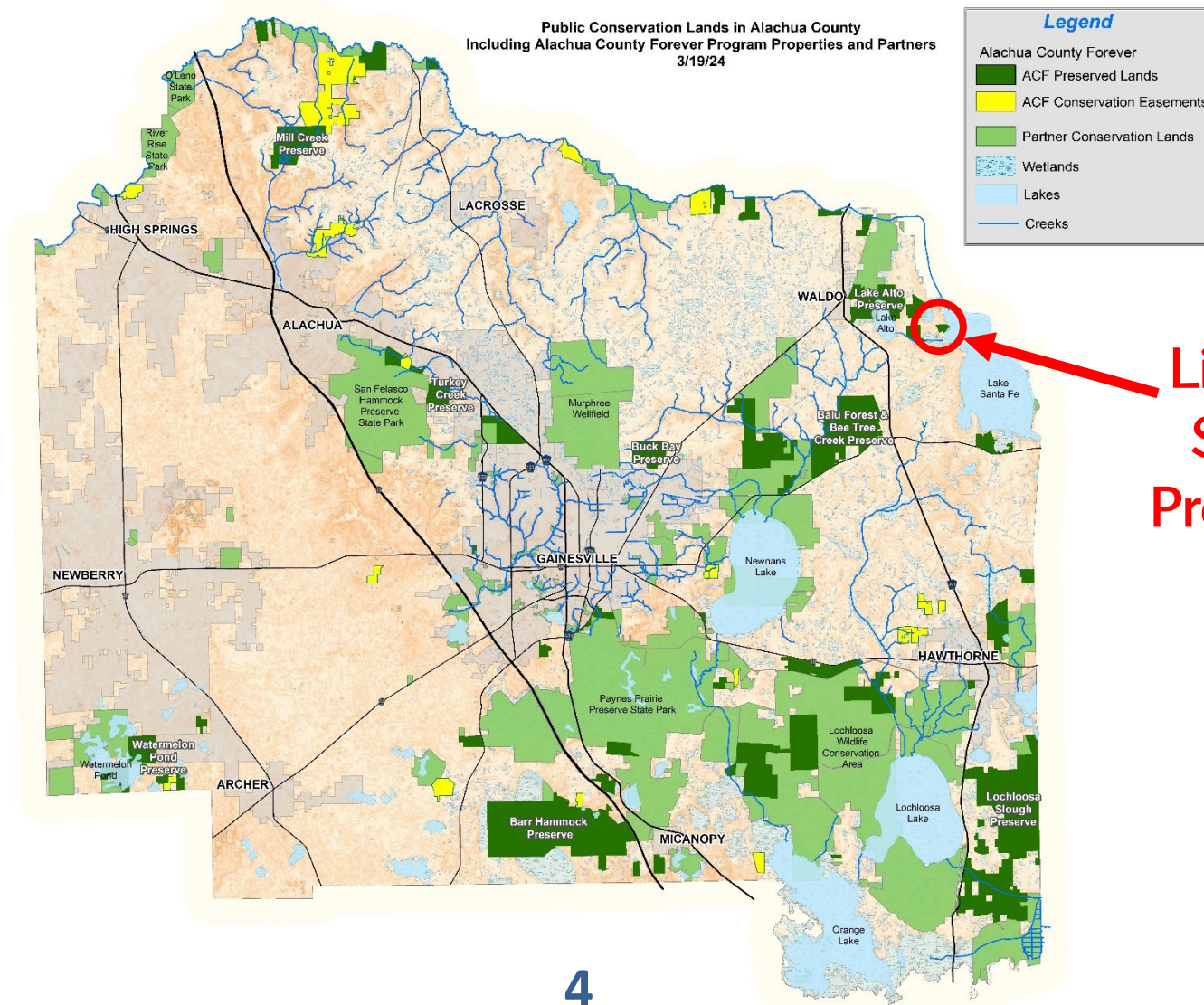
# ACF Preserve Management Plan Process

- 10-year initial plan length
- Similar to management planning process for state-owned lands
- Identifies resources onsite and management goals
  - New Plans for new preserves
  - Plan Updates/Amendments for additions to existing preserves



Alachua County,  
Florida

# Alachua County Forever Program



Little Lake  
Santa Fe  
Preserve: 69  
acres

# Little Lake Santa Fe Preserve Overview

- State of Florida Board of Trustees for the Internal Improvement Trust Fund purchased the property on March 4, 2021
- Alachua County acquired management of the Preserve through a 50-year lease, beginning Nov. 15, 2021
- Preserve acreage: 69.42
- FL Dept. of Environmental Protection reviewed the plan and approved on April 17, 2023
- TODAY: Presenting and asking for approval of the 10-year Management Plan


# Little Lake Santa Fe Preserve Aerial Map

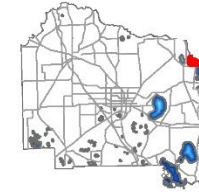


Source: Esri, Maxar, Earthstar Geographics, and the GIS User Community



**Legend**

 Little Lake Santa Fe Preserve Boundary



DISCLAIMER: This map and the spatial data it contains are made available as a public service, to be used for reference purposes only. The Alachua County Environmental Protection Department provides this information AS IS without warranty of any kind. The quality of the data is dependent on the various sources from which each data layer is obtained.

# Little Lake Santa Fe Preserve Highlights

- 800ft lake-frontage on Little Lake Santa Fe
- 23 acres within the Santa Fe River System Outstanding Florida Water designation



# Land Management Objectives

1. Maintain, enhance, or restore existing natural communities
2. Inventory natural features of the site, including flora, fauna, and natural communities
3. Protect populations of significant and listed plant and animal species
4. Develop and implement a prescribed fire management plan
5. Protect water resources from adverse impacts
6. Effectively and responsibly manage cultural resources
7. Promote public outdoor recreation and environmental education consistent with preserving the historic and natural resources of the site



# Natural Resource Management Strategies

1. FIRE MANAGEMENT (pg. 14) – Implement prescribed fire to restore and maintain fire-dependent natural communities within the preserve
2. RESTORATION (pg. 13) – Restore approximately 41 acres of pine uplands
3. INVASIVE PLANTS (pg. 15) – Control or eradicate invasive, non-native plant species
4. FERAL ANIMAL REMOVAL (pg. 16) – Monitor and remove feral animals as needed
5. CULTURAL RESOURCES (pg. 16) – Protect known sites from disturbance, and coordinate with Florida Department of State, Division of Historic Resources regarding identification and protection of cultural sites
6. MONITORING – Monitor property through field inspections and photopoints to assess the effects of management activities and public use on the resources

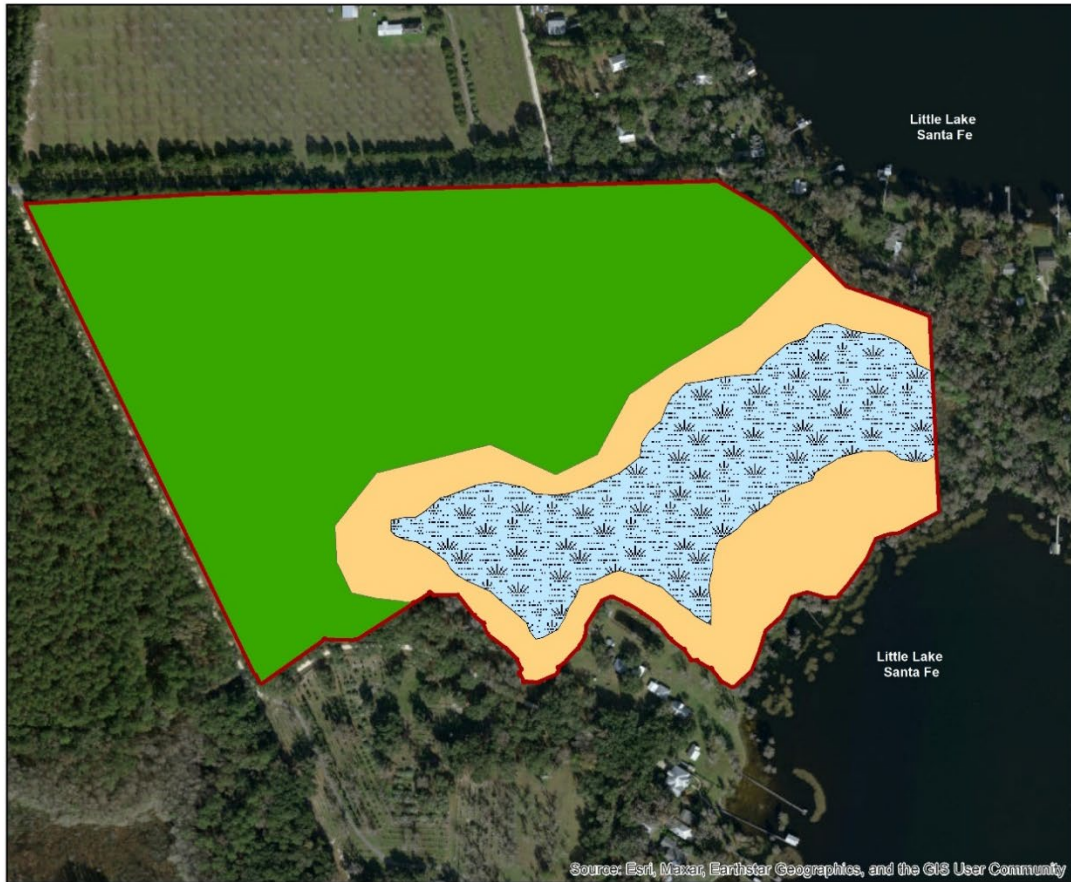
# Previous Uses

- Previous owners intended to build a house
- Mid-1900's half pine plantation half pasture
- Agriculture – likely pecan groves
- Former homesite location along NE 132<sup>nd</sup> Ave
- Turpentine industry



# Natural Communities, Plants, & Wildlife

## Little Lake Santa Fe Preserve Natural Communities



Source: Esri, Maxar, Earthstar Geographics, and the GIS User Community



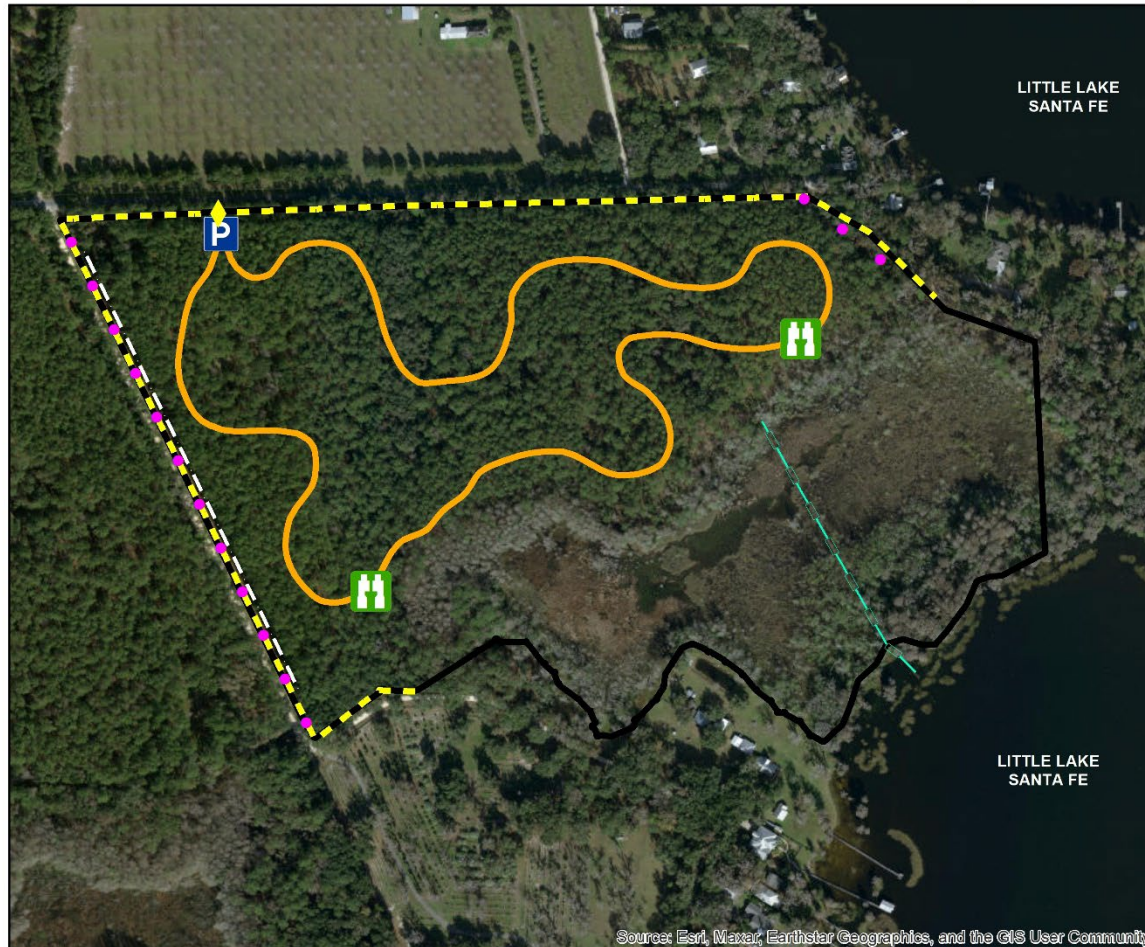
DISCLAIMER: This map and the spatial data it contains are made available as a public service, to be used for reference purposes only. The Alachua County Environmental Protection Department provides this information AS IS without warranty of any kind. The quality of the data is dependent on the various sources from which each data layer is obtained.

# Restoration



# Recreation

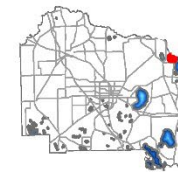
## Little Lake Santa Fe Preserve Conceptual Site Plan Map



Sources: Esri, Maxar, Earthstar Geographics, and the GIS User Community

### Legend

- Little Lake Santa Fe Preserve Boundary
- Proposed Gate
- Proposed Trailhead Parking
- Proposed Trail System
- Powerlines
- Proposed Bench
- Existing Fence
- Existing Firebreak
- Existing Dock



0 375 750 1,500 Feet

DISCLAIMER: This map and the spatial data it contains are made available as a public service, to be used for reference purposes only. The Alachua County Environmental Protection Department provides this information AS IS without warranty of any kind. The quality of the data is dependent on the various sources from which each data layer is obtained.

# Staff Recommendation

- Request approval of the 10-Year Management Plan Update

