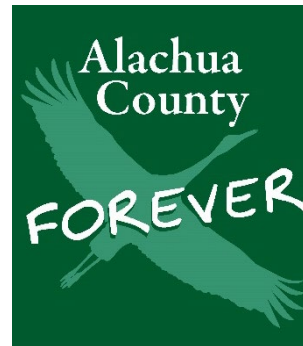




# Buck Bay Flatwoods Preserve 10-Year Management Plan Update

May 28, 2024



# Alachua County Forever Program

To acquire, improve, and manage environmentally significant lands that protect water resources, wildlife habitats and natural areas suitable for resource-based recreation.



Alachua County,  
Florida

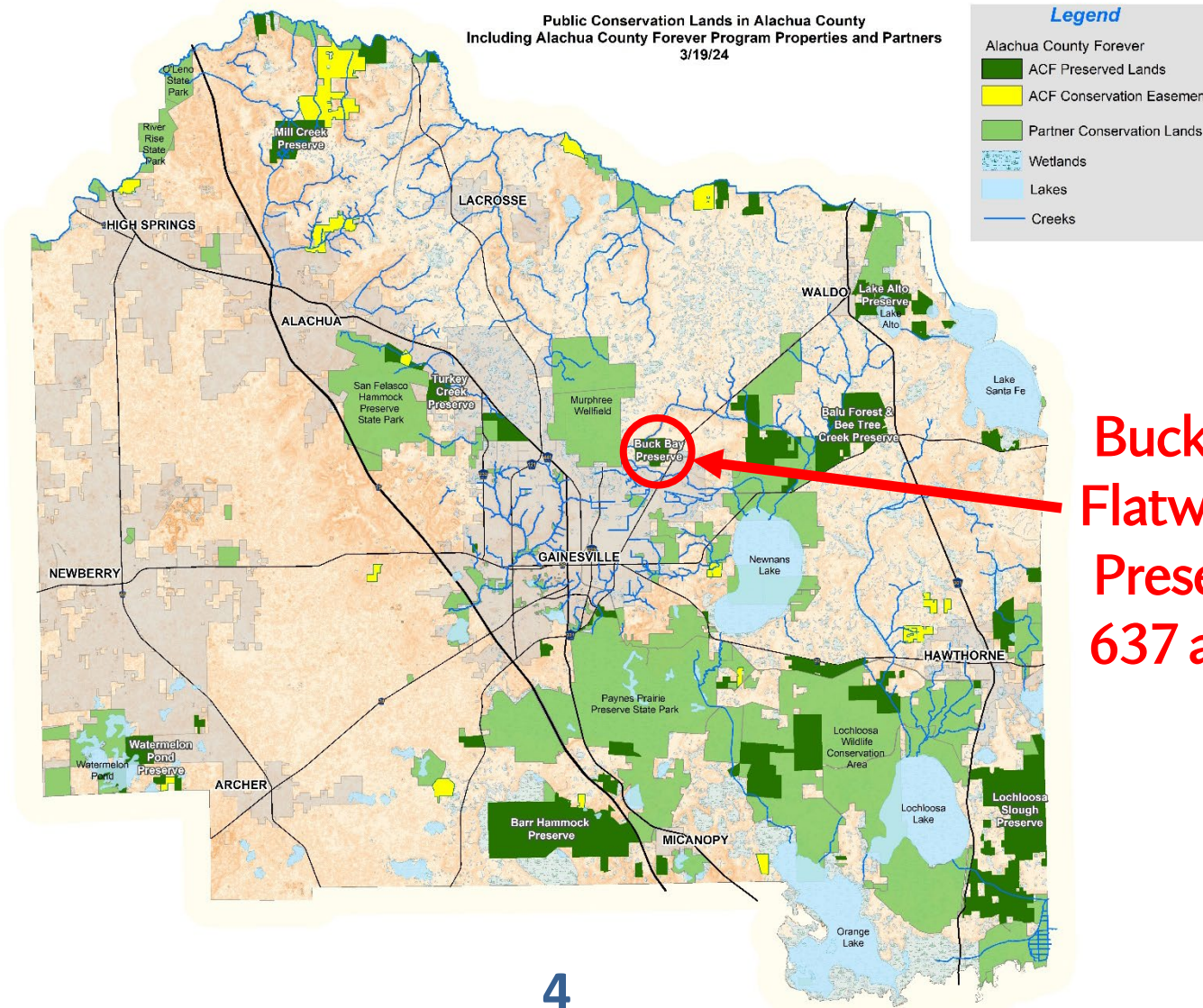
# ACF Preserve Management Plan Process

- 10-year initial plan length
- Similar to management planning process for state-owned lands
- Identifies resources onsite and management goals
  - New Plans for new preserves
  - Plan Updates/Amendments for additions to existing preserves



Alachua County,  
Florida

# Alachua County Forever Program



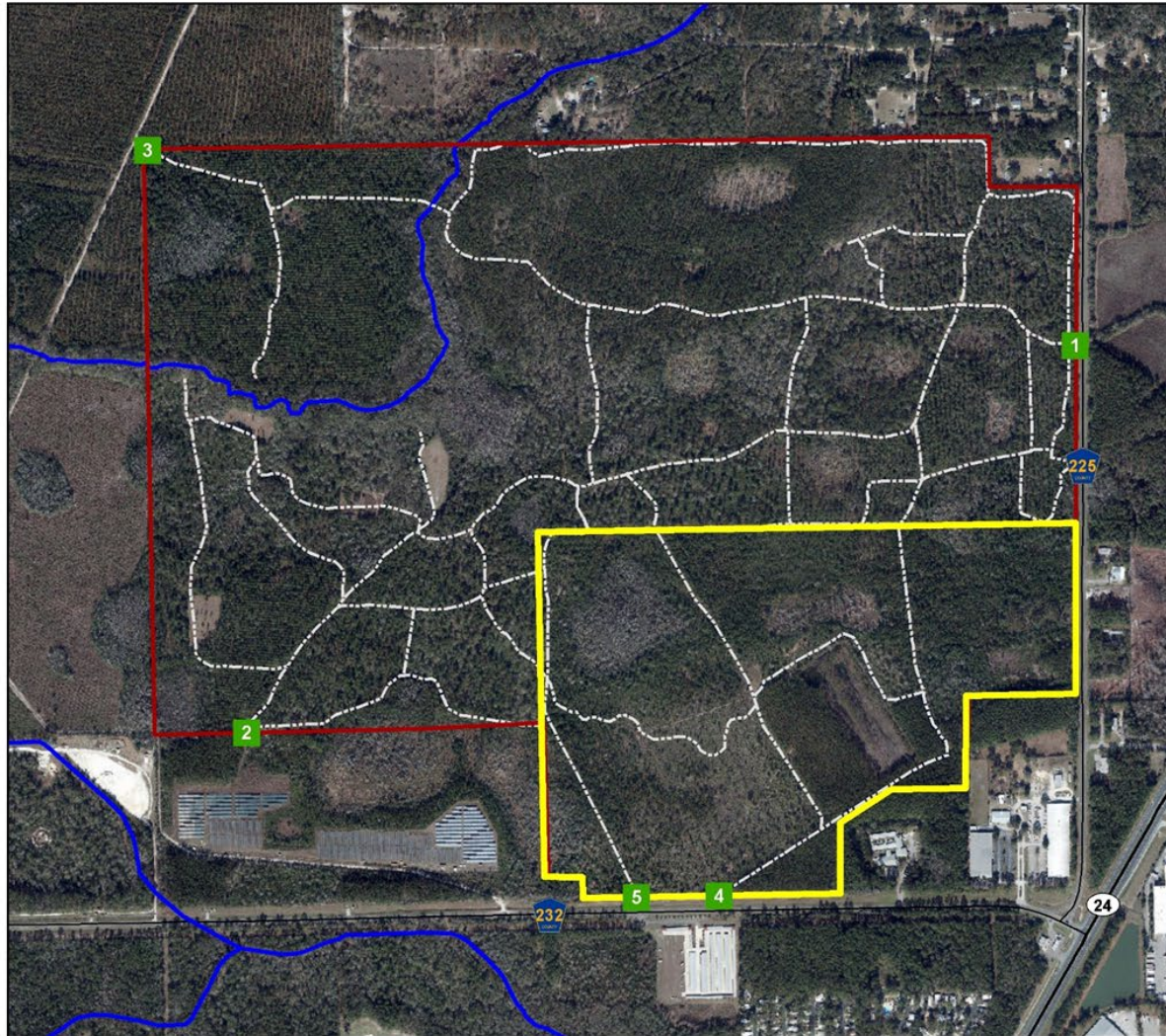
# Buck Bay Flatwoods Preserve Overview

- Original Purchase: 464 acres, \$1,089,593 in 2013
- Second Acquisition: 173 acres, \$727,310 in 2019
- Total of 637 acres for \$1,816,903 (2008 & 2016 WSPP funds)
- Original Management Plan Approved by BOCC May 26, 2015
- TODAY: Presenting updates and asking for approval of the new 10-year Management Plan



Alachua County,  
Florida

# Buck Bay Flatwoods Preserve



## Legend

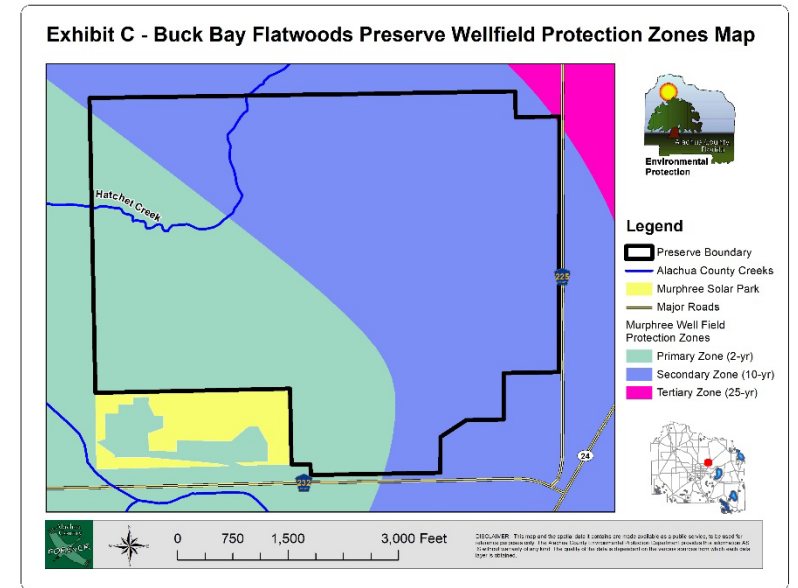
- ACF Boundary
- Raydient Tract
- ACF Gates
- ACF Roads, Trails, Firebreaks
- Alachua County Creeks



DISCLAIMER: This map and the spatial data it contains are made available as a public service, to be used for reference purposes only. The Alachua County Environmental Protection Department provides this information AS IS without warranty of any kind. The quality of the data is dependent on the various sources from which each data layer is obtained.

# Buck Bay Flatwoods Preserve Highlights

- 4,000 ft of Hatchet Creek
- Conserves land adjacent to GRU Wellfields
- Nine intact natural communities
- Imperiled Species: spoonleaf sundew (*Drosera intermedia*), hooded pitcher plant (*Sarracenia minor*), gopher tortoise (*Gopherus polyphemus*), and southern fox squirrel (*Sciurus niger niger*)
- Public Opening held on October 28, 2022



Alachua County,  
Florida





# Land Management Objectives

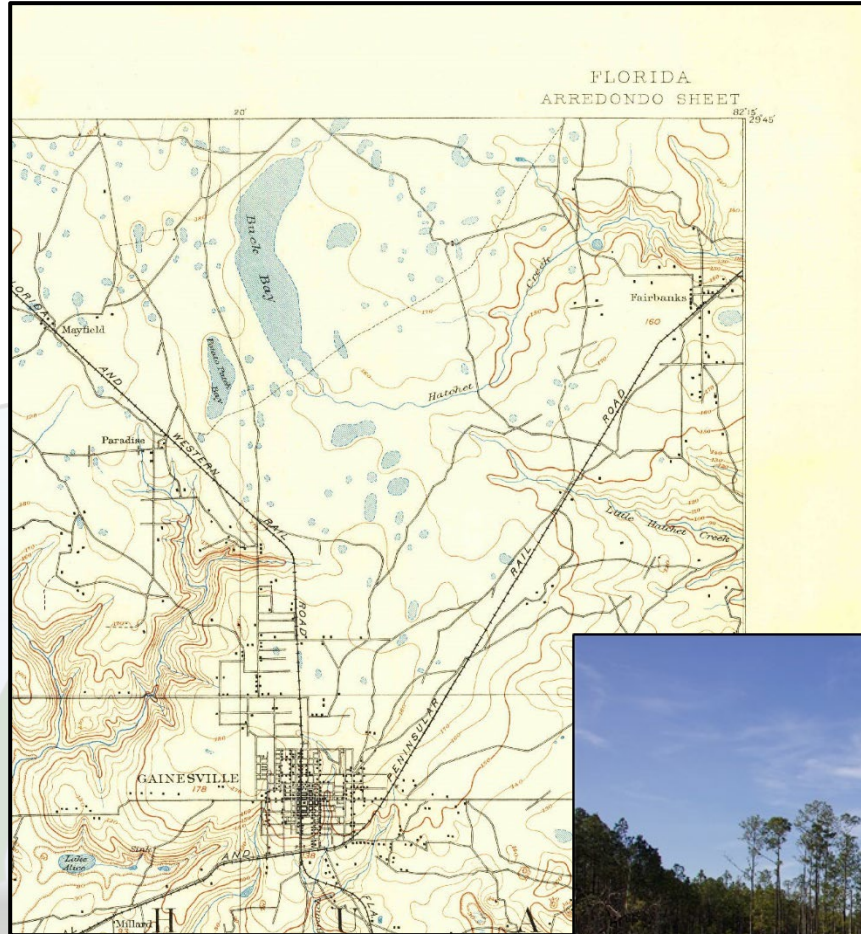
1. Maintain, enhance, or restore existing natural communities
2. Inventory natural features of the site, including flora, fauna, and natural communities
3. Protect populations of significant and listed plant and animal species
4. Develop and implement a prescribed fire management plan
5. Protect water resources from adverse impacts
6. Effectively and responsibly manage cultural resources
7. Promote public outdoor recreation and environmental education consistent with preserving the historic and natural resources of the site

# Natural Resource Management Strategies

1. FIRE MANAGEMENT (pg. 21) – Implement prescribed fire to restore and maintain fire-dependent natural communities within the preserve
2. RESTORATION (pg. 19) – Restore approximately 509 acres of pine flatwoods with timber management and prescribed fire and monitor the condition of other natural communities
3. INVASIVE PLANTS (pg. 22) – Control or eradicate invasive, non-native plant species
4. FERAL ANIMAL REMOVAL (pg. 22) – Monitor and remove feral animals as needed
5. CULTURAL RESOURCES (pg. 23) – Protect known sites from disturbance, and coordinate with Florida Department of State, Division of Historic Resources regarding identification and protection of cultural sites
6. MONITORING – Monitor property through field inspections and photopoints to assess the effects of management activities and public use on the resources

# Previous Uses

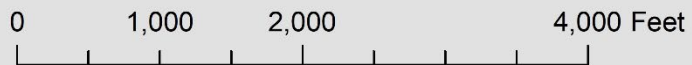
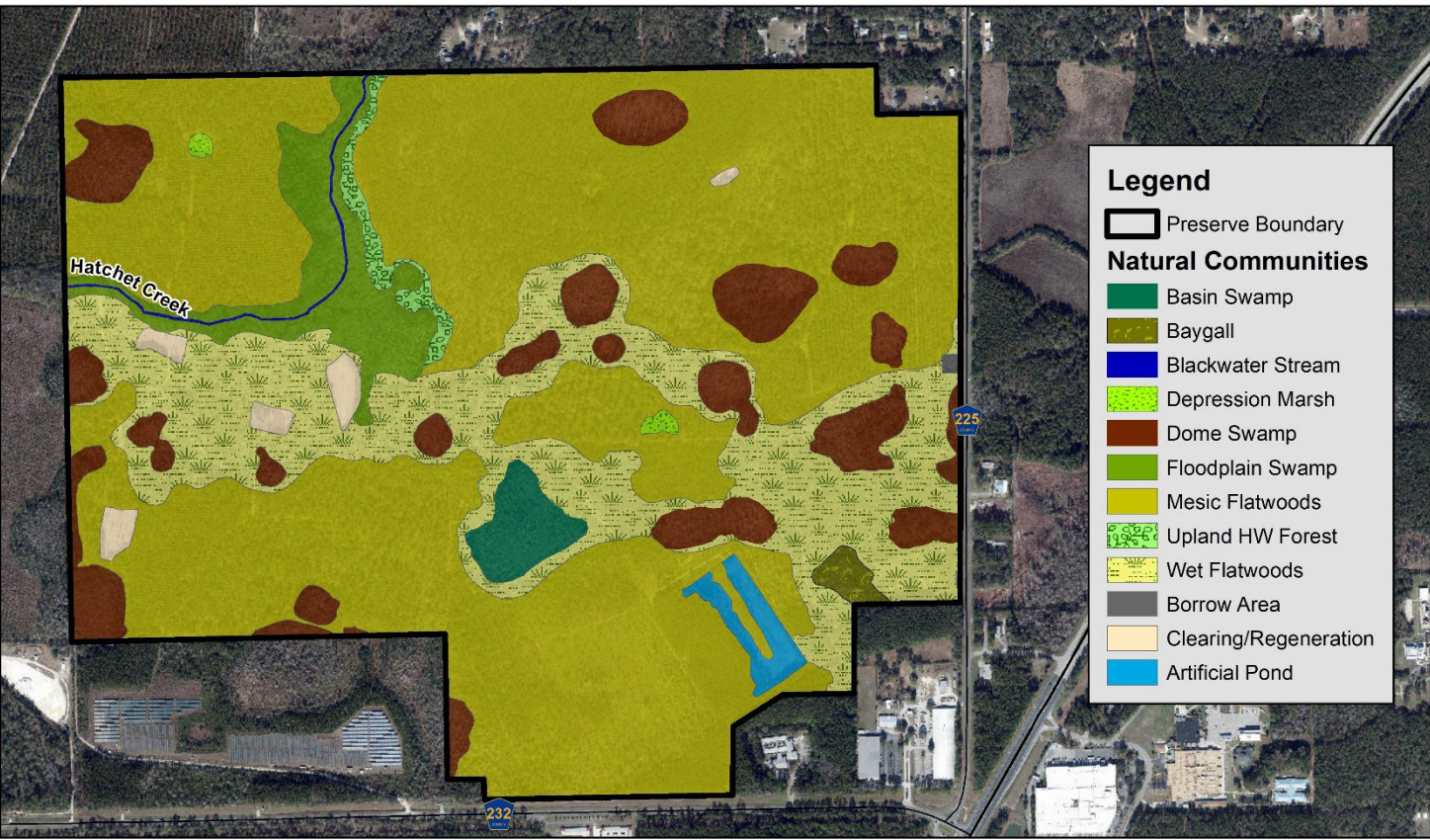
- Private timber land
- Recreational hunting
- Borrow-pit
- Turpentine industry
- Early settlers
- Earlier native American use?



# Natural Communities, Plants, & Wildlife



## Buck Bay Flatwoods Preserve Natural Communities Map



DISCLAIMER: This map and the spatial data it contains are made available as a public service, to be used for reference purposes only. The Alachua County Environmental Protection Department provides this information AS IS without warranty of any kind. The quality of the data is dependent on the various sources from which each data layer is obtained.



# Restoration

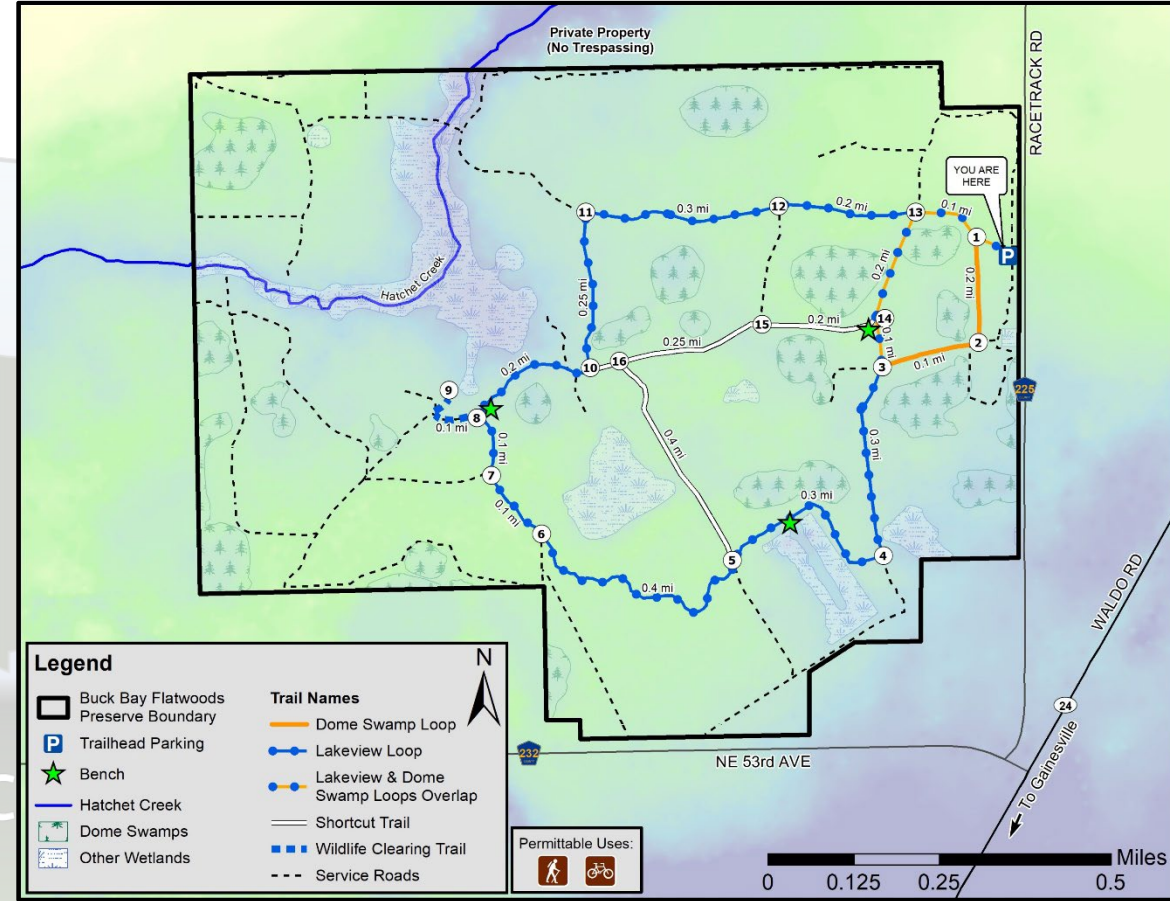


# Restoration



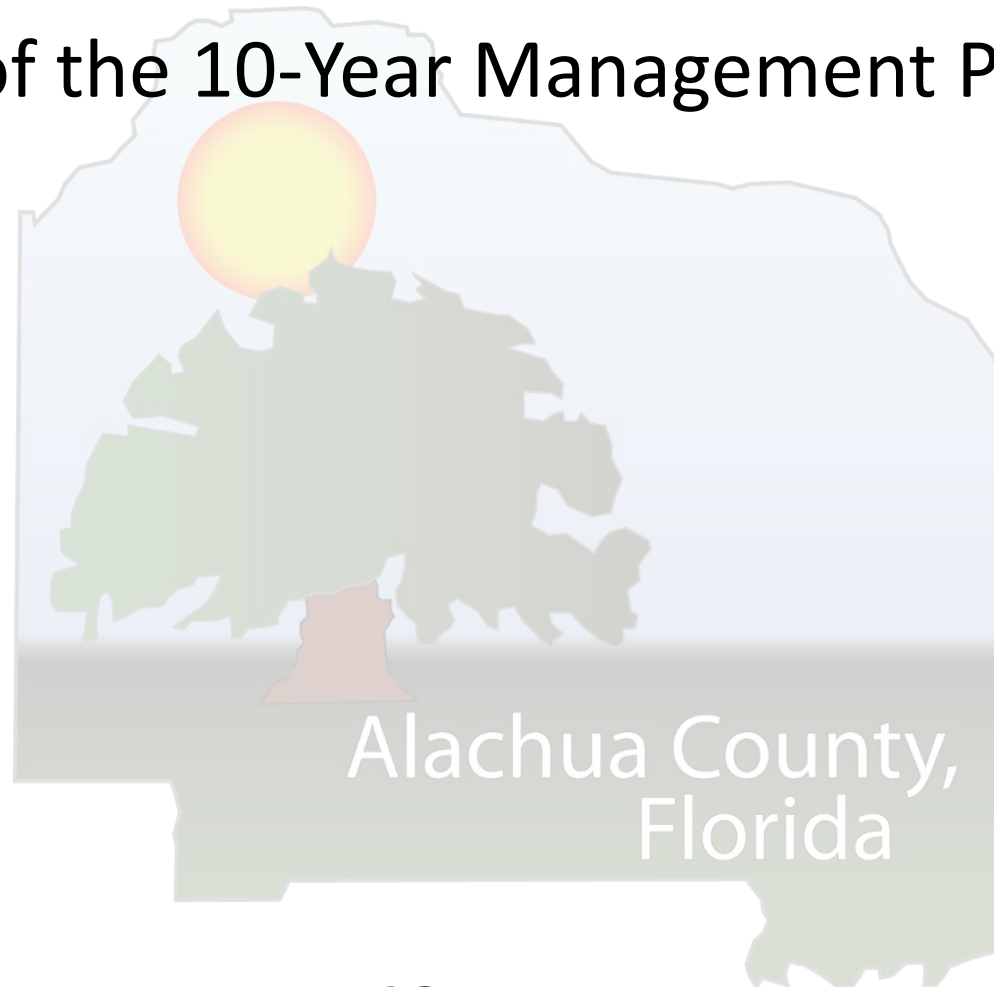
Florida

# Recreation



# Staff Recommendation

- Request approval of the 10-Year Management Plan Update



*Thank you!*