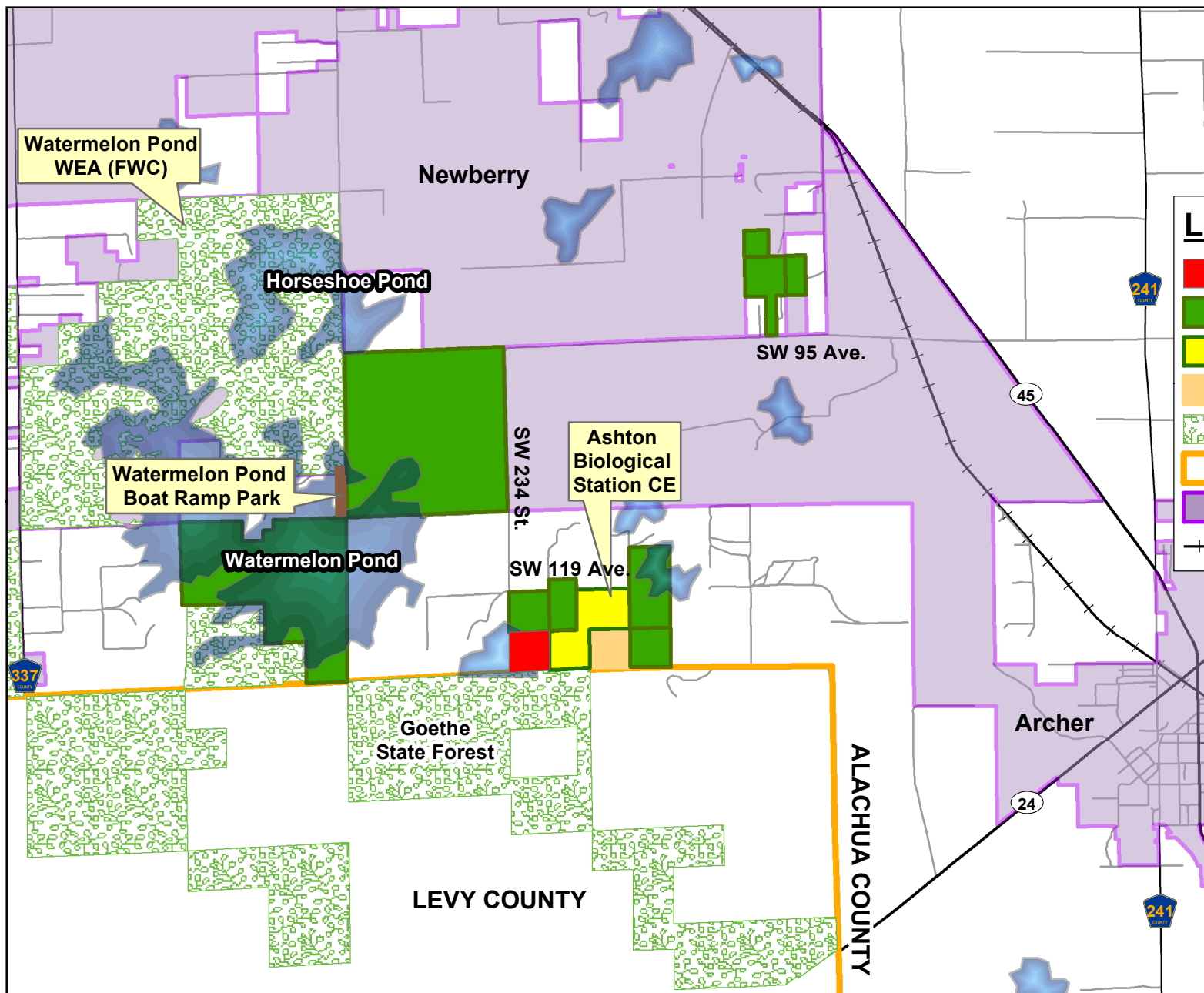
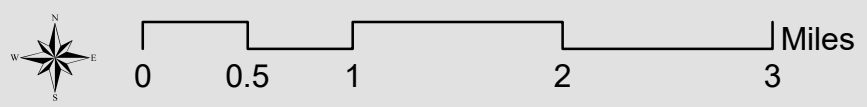
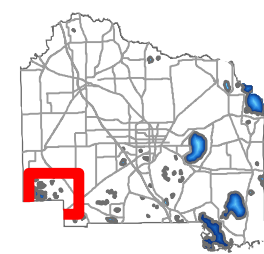


# Watermelon Pond - Howell Location Map



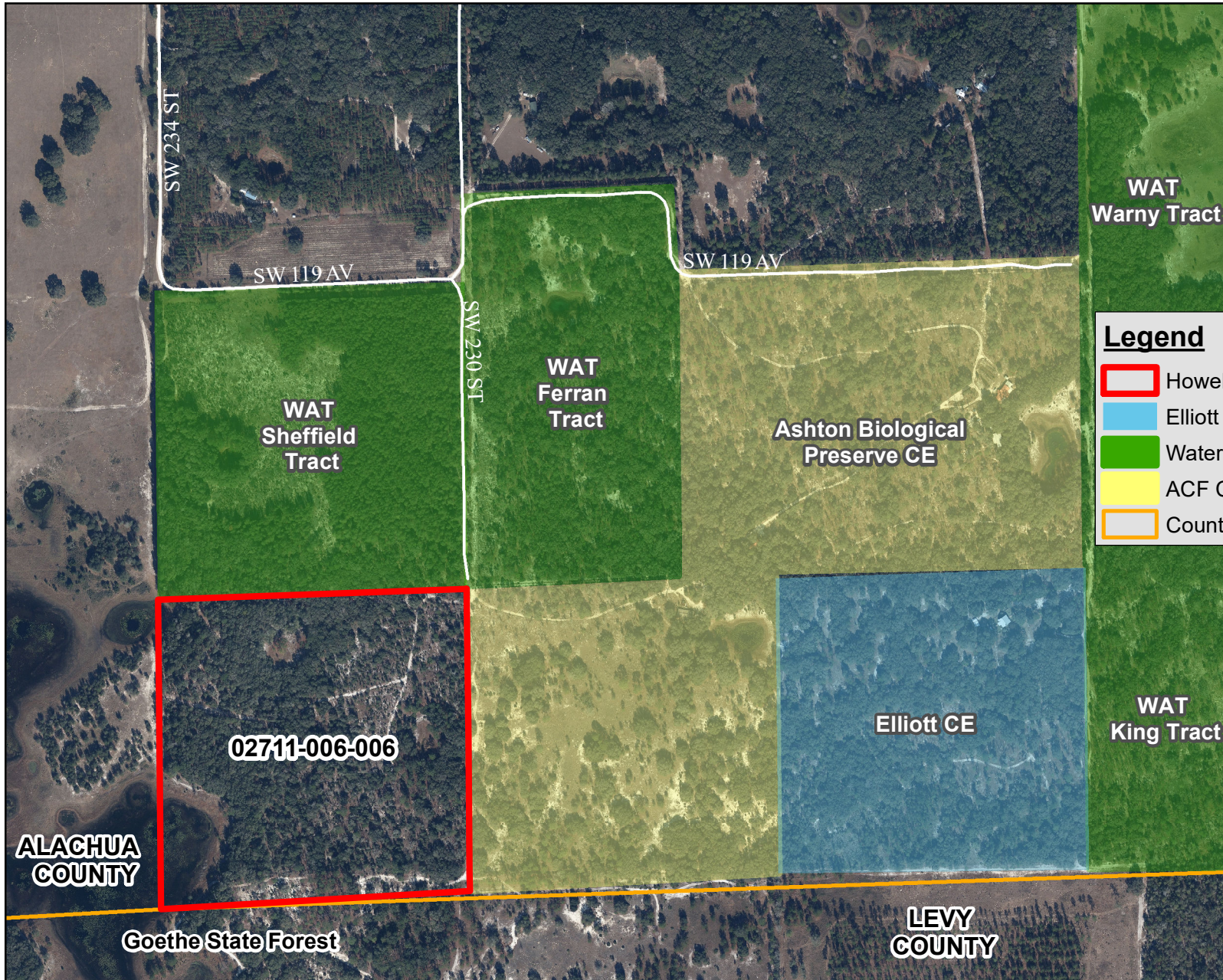
### Legend

- Howell CE Parcel (40 ac.)
- Watermelon Pond Preserve
- Conservation Easement
- Elliott CE Under Contract
- Conservation Lands
- County Boundary
- Municipal Boundaries
- Railroad



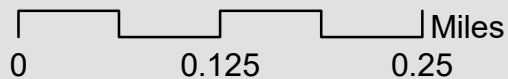
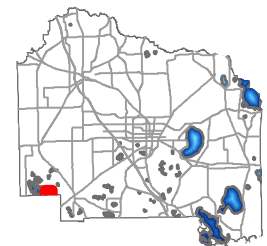
DISCLAIMER: This map and the spatial data it contains are made available as a public service, to be used for reference purposes only. The Alachua County Environmental Protection Department provides this information AS IS without warranty of any kind. The quality of the data is dependent on the various sources from which each data layer is obtained.

# Watermelon Pond - Howell Parcel Map



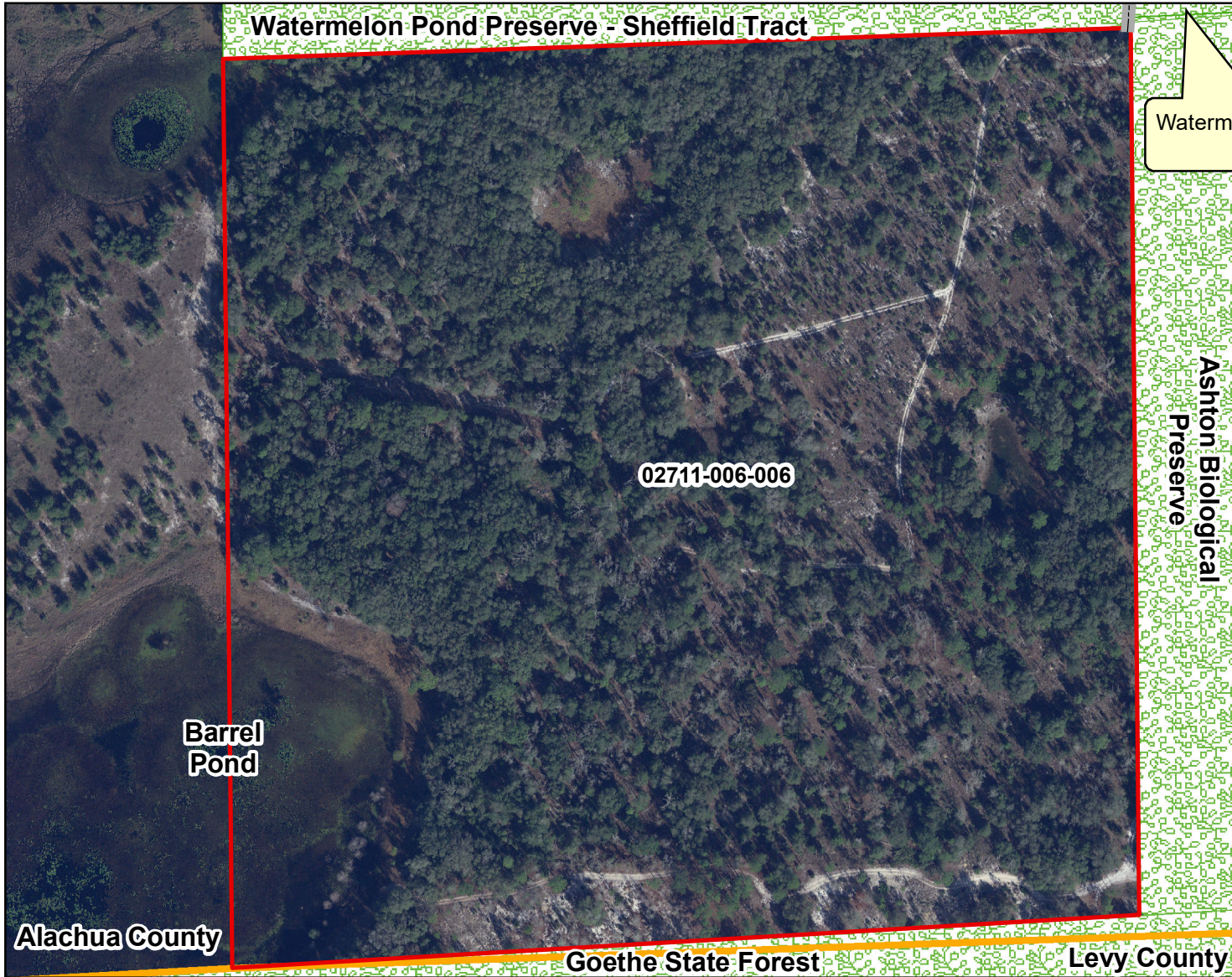
**Legend**

- Howell Parcel (40 ac.)
- Elliott Parcel (Under Contract)
- Watermelon Pond Preserve
- ACF Conservation Easement (CE)
- County Boundary



DISCLAIMER: This map and the spatial data it contains are made available as a public service, to be used for reference purposes only. The Alachua County Environmental Protection Department provides this information AS IS without warranty of any kind. The quality of the data is dependent on the various sources from which each data layer is obtained.

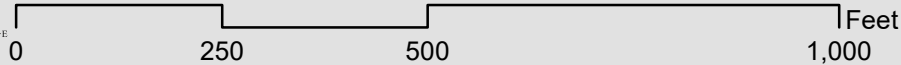
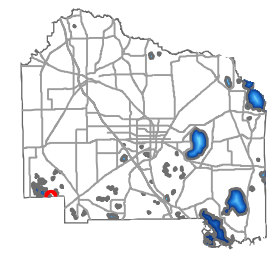
# Watermelon Pond - Howell Parcel Map



Watermelon Pond Preserve  
Ferran Tract

**Legend**

- Howell Parcel (40 ac.)
- Preserve
- Conservation Easement
- Access Road
- County Boundary



DISCLAIMER: This map and the spatial data it contains are made available as a public service, to be used for reference purposes only. The Alachua County Environmental Protection Department provides this information AS IS without warranty of any kind. The quality of the data is dependent on the various sources from which each data layer is obtained.