



# Enforcement of School Zone Speed Limits

Alison Moss, AICP



## ***Presentation Overview***

- 1. Overview of Florida Statute 316.008(9)*
- 2. Sample Ordinance: St. Lucie County*
- 3. Proposed Program Structure & Study*
- 4. Board Action*



- F.S. 316.008(9): County or municipal governments may use speed detection systems to enforce speed limits in school zones
- Effective July 1, 2023
- Enforcement Times: “May enforce the applicable speed limit on a roadway properly maintained as a school zone:
  1. Within 30 minutes before through 30 minutes after the start of a regularly scheduled breakfast program;
  2. Within 30 minutes before through 30 minutes after the start of a regularly scheduled school session;
  3. During the entirety of a regularly scheduled school session; and
  4. Within 30 minutes before through 30 minutes after the end of a regularly scheduled school session”



- F.S. 316.008(9): County or municipal governments may use speed detection systems to enforce speed limits in school zones (Continued...)
  - May capture photos or videos of rear of vehicle
  - Violation: \$100 fine for 11+ mph over the speed limit
  - Civil penalty only; Can become a uniform traffic citation if not paid within 30 days



## **\$100 Fine:**

- \$60 used to administer speed detection systems and other public safety initiatives (Vendor and Alachua County/Sherriff's Office)
- \$20 to General Revenue Fund (State of Florida)
- \$12 for school security initiatives, student transportation, or to improve safety of student walking conditions (Alachua County Public Schools)
- \$5 to School Crossing Guard Recruitment and Retention Program (Alachua County Sherriff's Office)
- \$3 to Department of Law Enforcement Criminal Justice Standards and Training Trust Fund (State of Florida)



## *County or Municipal Requirements*

- Enact an ordinance to authorize installation
- Consider traffic data or other evidence to support installation
- Determine that school zone constitutes a “heightened safety risk that warrants additional enforcement measures”
- Post signs indicating photo enforcement
- Conduct a 30-day public awareness campaign for program initiation; not required for future program expansion
- Report results annually
- Read more: [HB 0657 / SB 0588](#)



## ***Recitals: Explicit references to all HB 657 Requirements***

*Defines type of equipment & violation (11+ mph over speed limit)*

*Provides timeframe to be used (entirety of school session)*

*Permits Staff to contract vendor services*

*Commits compliance with FDOT standards*

*Commits to public transparency in roll-out and program*

*Defines roles and processes related to fines, citations, and disputes*

*Describes Ordinance requirement + demonstration 'heightened risk'*

*Describes Board's commitment to transportation safety, particularly in schools*



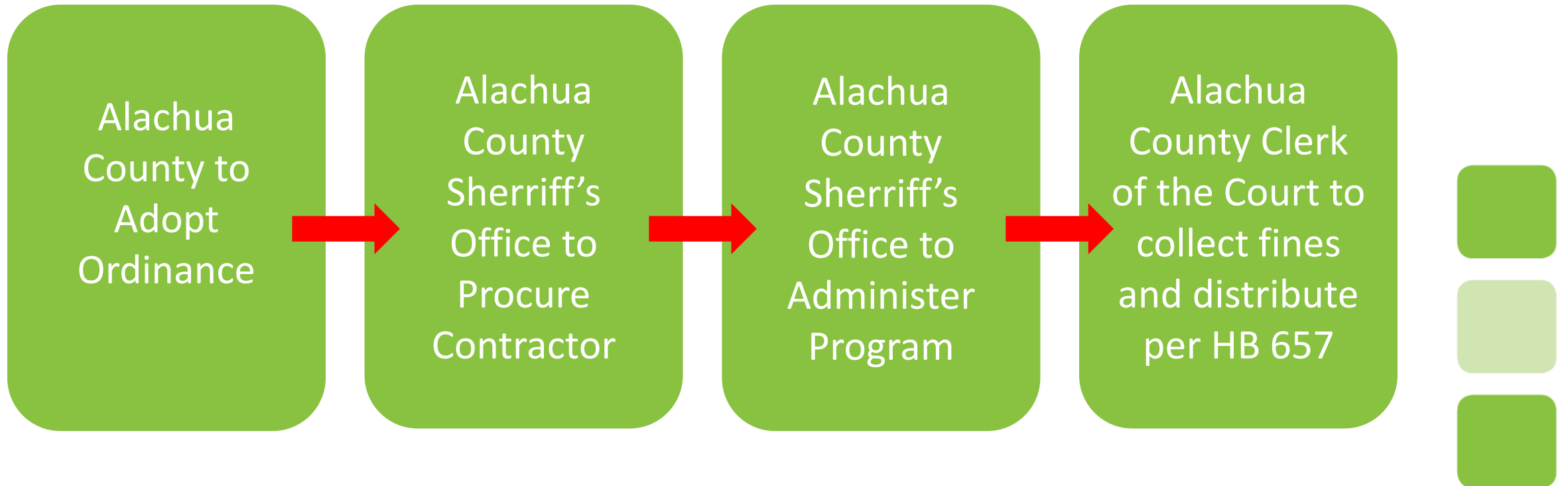
## *Code Revisions per Existing FL Statutes*

1. Purpose and Intent
2. Use of Speed Detection Systems
3. Determination of Heightened Safety Risk (including specific locations)
4. Traffic Infraction Enforcement Officers
5. Notices, Penalties, Appeals (tasks County Administrator or designee)
6. Signage and Public Awareness Campaign
7. Reporting





## *Partnership between Alachua County, Alachua County Sherriff's Office, and Alachua County Clerk of the Court*



## ***Determination of Heightened Risk***

*The county or municipality must determine that the school zone where a speed detection system is to be placed or installed **constitutes a heightened safety risk that warrants additional enforcement measures pursuant to this subsection.***

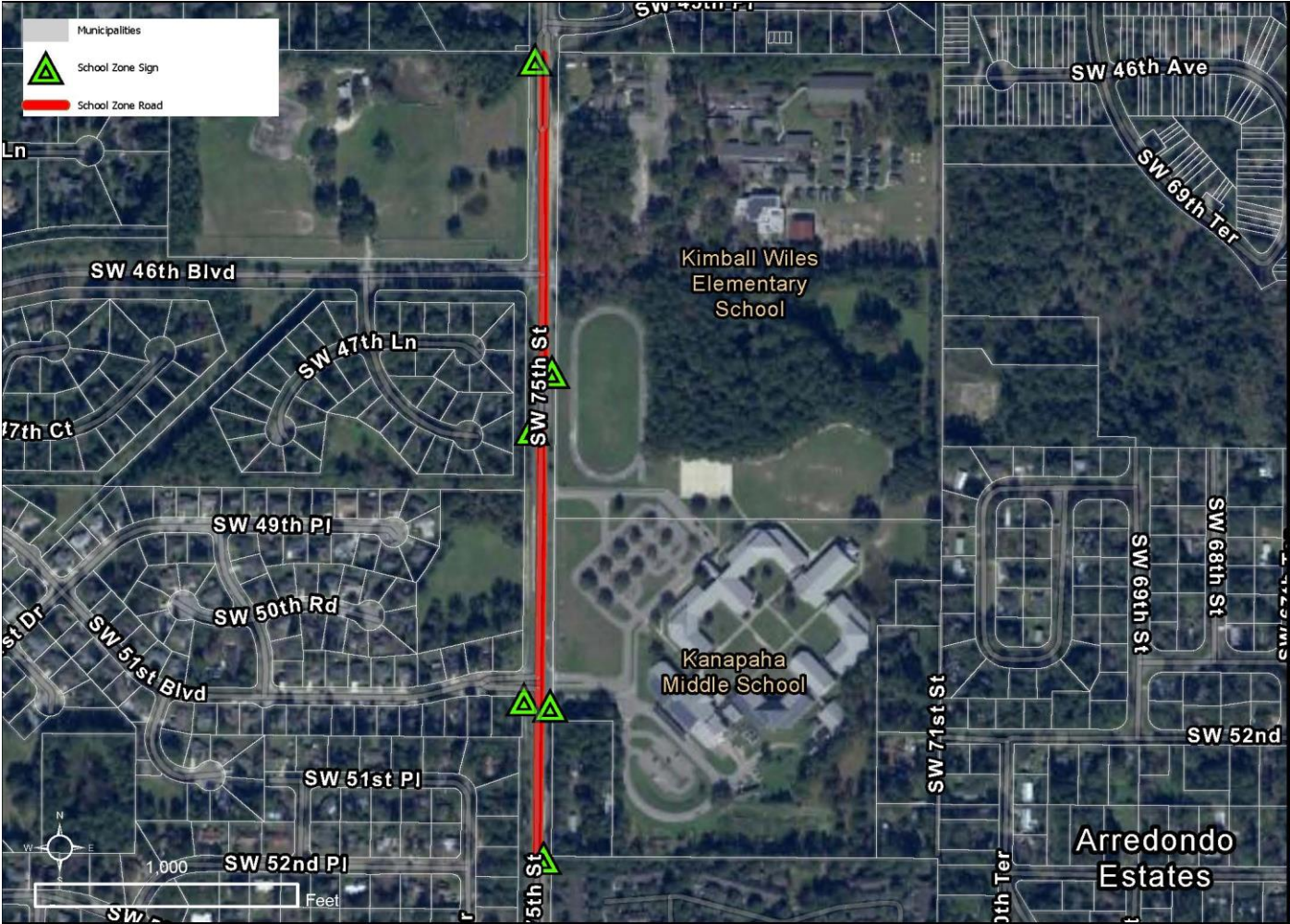
- Statute does not define “heightened risk”
- Potential vendor conducted study of all Alachua County School Zones
- Collection Dates & Times: Tuesday (11/14, 4/30) or Thursday (11/16); 6:00 AM – 6:00 PM
- The study demonstrated more than 100 drivers exceeding the posted speed by more than 10 mph in **18 of 22** Alachua County School Zones



# Study – Locations of Heightened Risk

## School Zones Under Heightened Risk

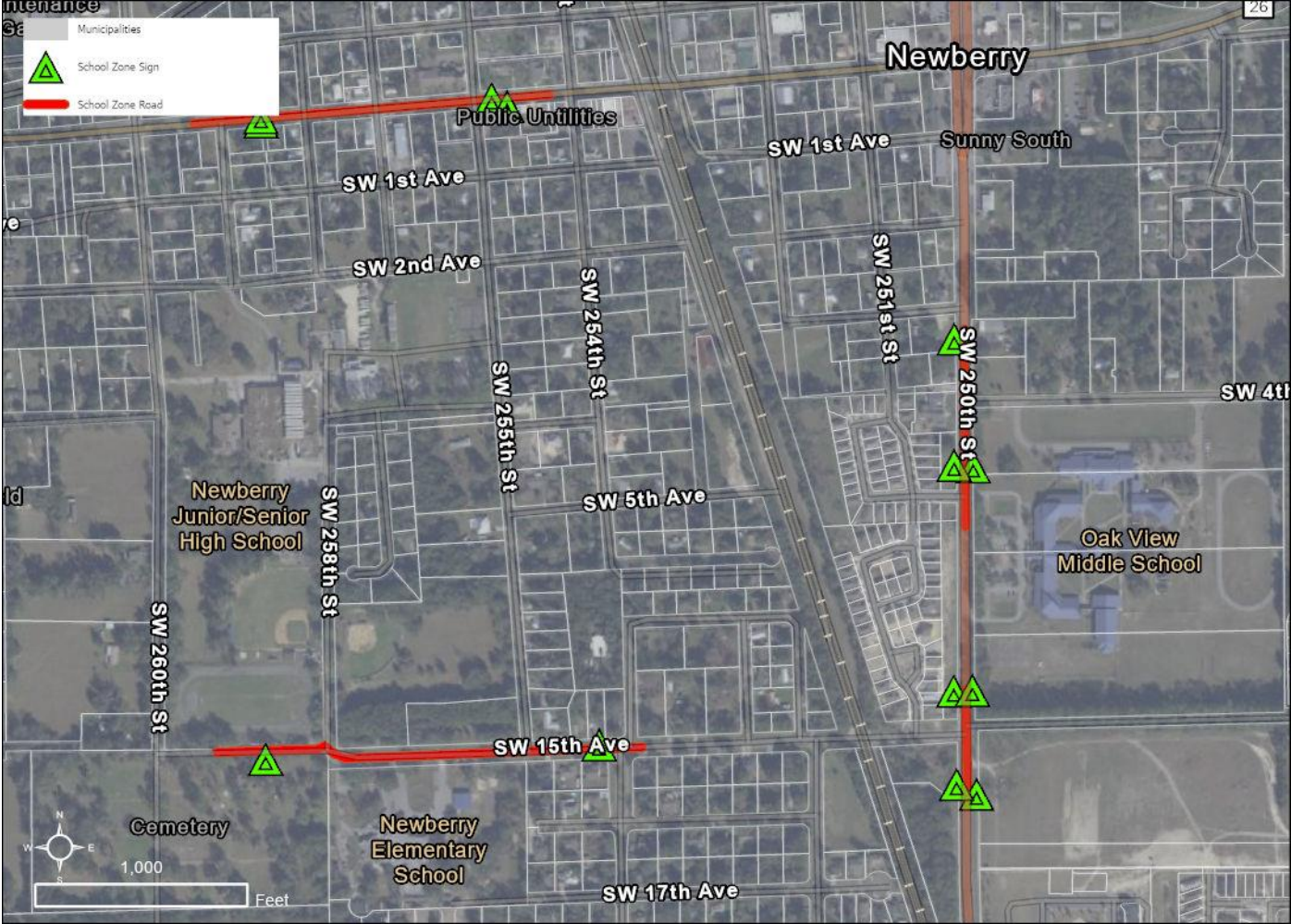
Schools Studied	Street	Violators 10+ mph over
Archer Community Center	FL-45	351
Archer Elementary School	SW 170th St.	162
Ft. Clarke Middle School	NW 23rd Ave.	699
Hidden Oak Elementary School	Ft. Clarke Blvd.	1,025
Hidden Oak Elementary School	NW 23rd Ave.	1,394
Hawthorne High School	SE 69th Ave.	214
Shell Elementary School	SE Hawthorne Rd.	1,627
Shell Elementary School	US-301	167
Idylwild Elementary School	SW Williston Rd.	1,383
Kanapaha Middle School	SW 75th St.	1,955
Kimball Wiles Elementary School	SW 75th St	2,251



# Study – Locations of Heightened Risk

## School Zones Under Heightened Risk

Schools Studied	Street	Violators 10+ mph over
Lake Forest Elementary	SE 43rd St.	292
Lawton M. Chiles Elementary School	School House Rd.	1,783
Lawton M. Chiles Elementary School	SW 24th Ave	580
Meadowbrook Elementary School	NW 39th Ave.	1,585
Newberry Elementary School	SW 15th Ave.	157
Newberry High School	W Newberry Rd.	636
Oakview Middle School (Zone 1)	SW 250th St.	281



- 1. Direct Staff to advertise an ordinance to enact the use of Speed Detection Systems in Alachua County School Zones.*
- 2. Direct Staff on the time frames to be enforced consistent with the options in F.S. 316.008(9).*





# Questions?

**Alison Moss, AICP**

Transportation Planning Manager

Growth Management

[amoss@alachuacounty.us](mailto:amoss@alachuacounty.us)

352-374-5249 ext. 4574 (office)

