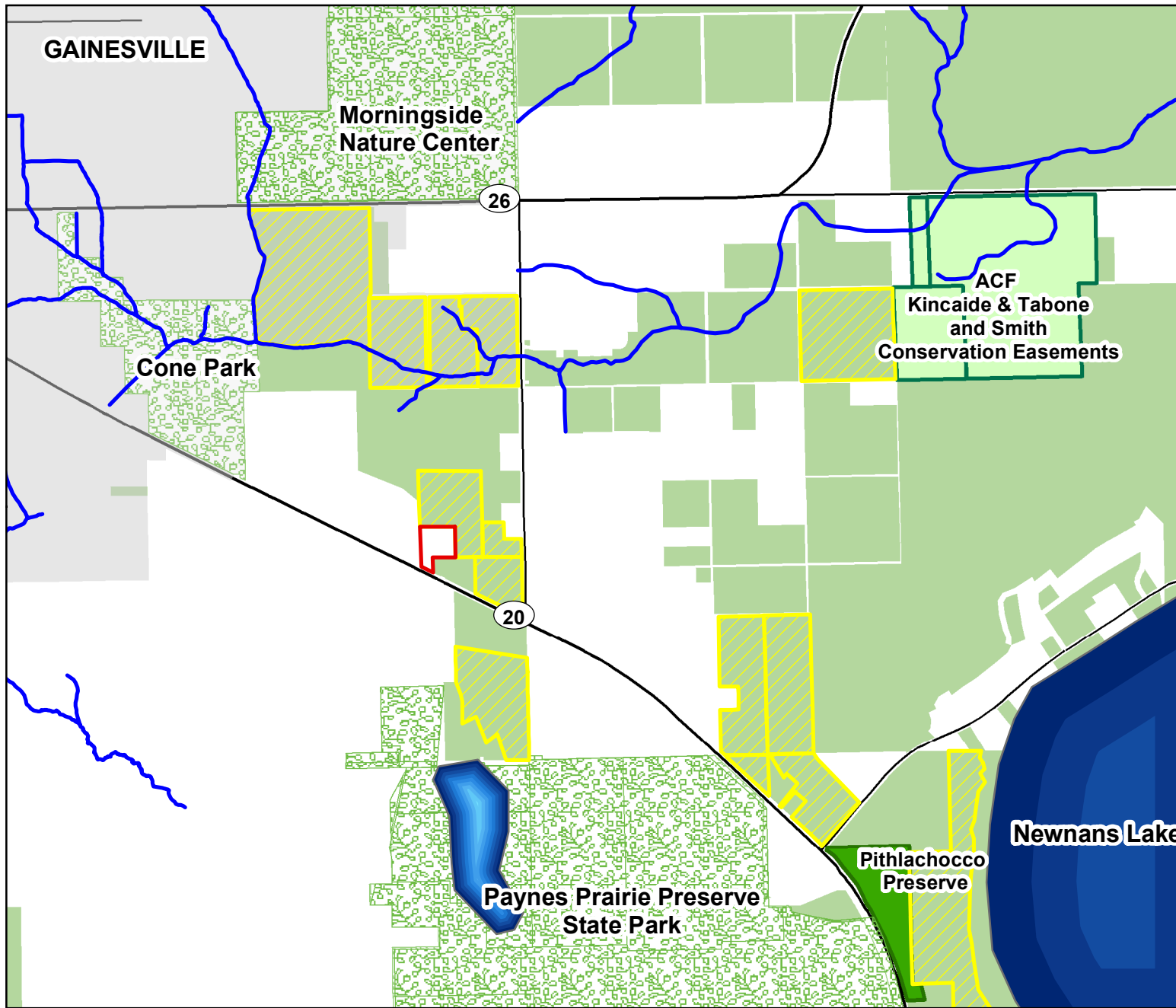
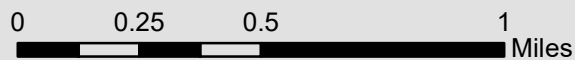
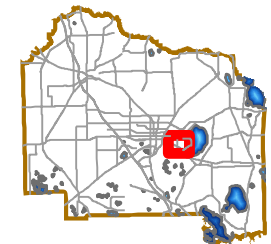


Quaker 22 LLC Location Map



Legend

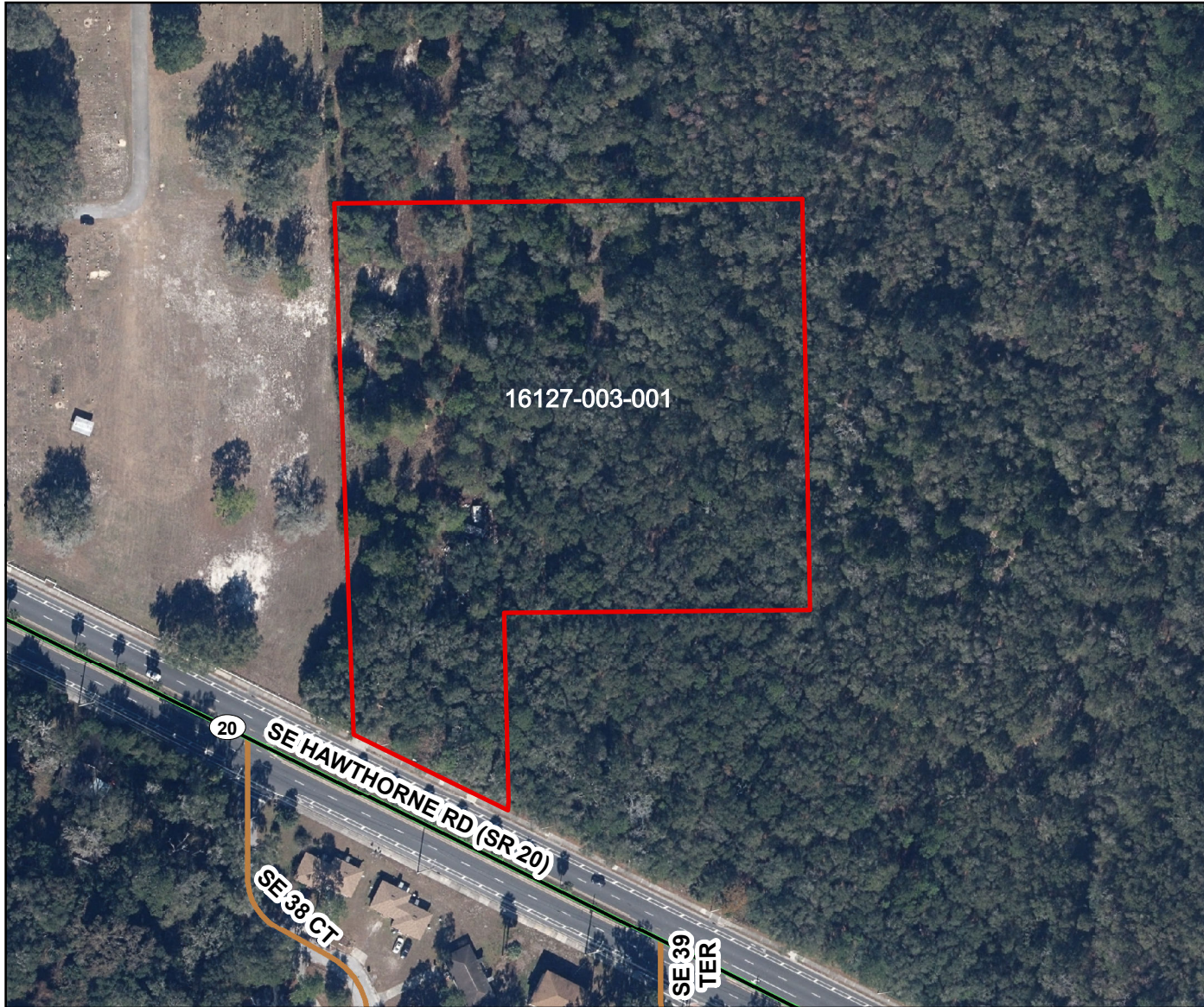
- Quaker 22 LLC (5.69 ac)
- ACF Preserve
- Conservation Easement
- Conservation Lands
- ACF Project Areas
- Municipal Boundaries
- Lakes
- Alachua County Creeks
- ACF Nominations**
- ACTIVE ACQUISITION



DISCLAIMER: This map and the spatial data it contains are made available as a public service, to be used for reference purposes only. The Alachua County Environmental Protection Department provides this information AS IS without warranty of any kind. The quality of the data is dependent on the various sources from which each data layer is obtained.

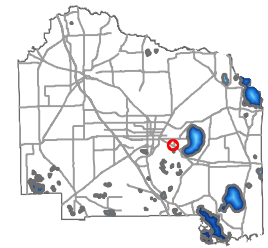


Lake Forest Creek* - Quaker 22 LLC Parcel Map

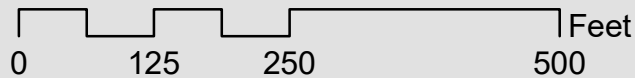


Legend

 Quaker 22 LLC Parcel (5.69 ac)



* Property is adjacent to but not within the Lake Forest Creek ACF project area



DISCLAIMER: This map and the spatial data it contains are made available as a public service, to be used for reference purposes only. The Alachua County Environmental Protection Department provides this information AS IS without warranty of any kind. The quality of the data is dependent on the various sources from which each data layer is obtained.