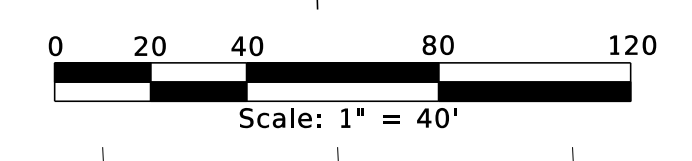


* NOTE 1: EXISTING BLANKET UTILITIES EASEMENT TO FLORIDA POWER CORPORATION PER D.B. 146, PG. 104
 * NOTE 2: EXISTING BLANKET EASEMENT TO SOUTHERN BELL TELEPHONE AND TELEGRAPH CO. PER D.B. 121, PG. 327

CURVE TABLE					
CURVE	DELTA	LENGTH	RADIUS	CHORD	CHORD BEARING
C61	87°32'23"(C)	76.39'(C)	50.00'(C)	69.18'(C)	S 44°34'03" E
C62	92°27'37"(C)	80.69'(C)	50.00'(C)(D)	72.21'(C)	N 45°25'57" E

SEE SHEET 2

TOWNSHIP 9 SOUTH, RANGE 17 EAST
 TOWNSHIP 10 SOUTH, RANGE 17 EAST



PARENT TRACT FOR PARCEL 209
 SEE SHEET 2

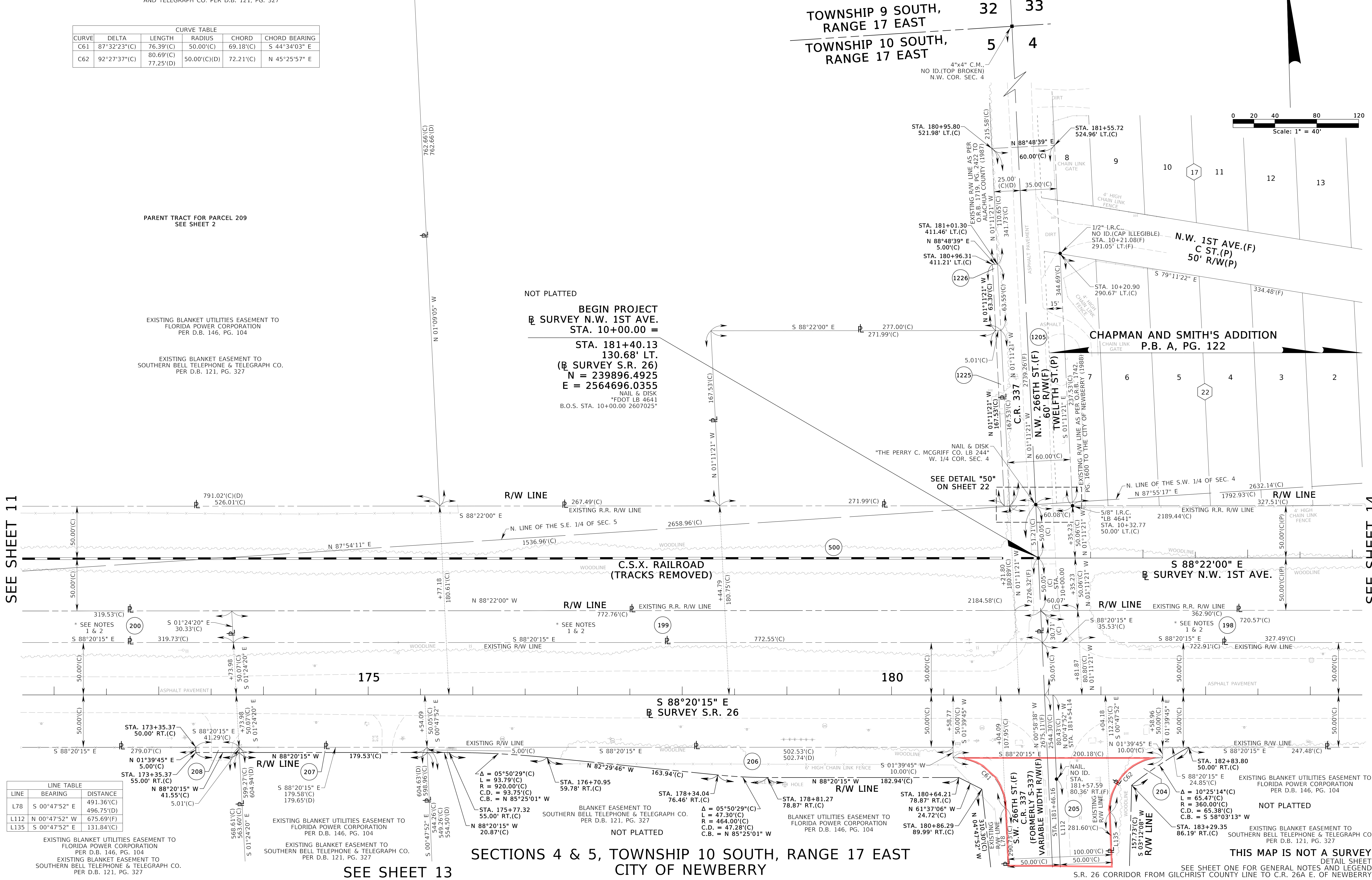
EXISTING BLANKET UTILITIES EASEMENT TO FLORIDA POWER CORPORATION PER D.B. 146, PG. 104

EXISTING BLANKET EASEMENT TO SOUTHERN BELL TELEPHONE & TELEGRAPH CO. PER D.B. 121, PG. 327

NOT PLATTED
BEGIN PROJECT
☒ SURVEY N.W. 1ST AVE.
STA. 10+00.00 =
STA. 181+40.13
130.68' LT.
(☒ SURVEY S.R. 26)
N = 239896.4925
E = 2564696.0355
 NAIL & DISK
 *FDOT LB 4641
 B.O.S. STA. 10+00.00 2607025*

SEE SHEET 11

SEE SHEET 14



LINE	BEARING	DISTANCE
L78	S 00°47'52" E	491.36'(C)
L112	N 00°47'52" W	675.69'(F)
L135	S 00°47'52" E	131.84'(C)

EXISTING BLANKET UTILITIES EASEMENT TO FLORIDA POWER CORPORATION PER D.B. 146, PG. 104
 EXISTING BLANKET EASEMENT TO SOUTHERN BELL TELEPHONE & TELEGRAPH CO. PER D.B. 121, PG. 327

EXISTING BLANKET UTILITIES EASEMENT TO FLORIDA POWER CORPORATION PER D.B. 146, PG. 104
 EXISTING BLANKET EASEMENT TO SOUTHERN BELL TELEPHONE & TELEGRAPH CO. PER D.B. 121, PG. 327

SECTIONS 4 & 5, TOWNSHIP 10 SOUTH, RANGE 17 EAST
CITY OF NEWBERRY

THIS MAP IS NOT A SURVEY
 SEE SHEET ONE FOR GENERAL NOTES AND LEGEND
 S.R. 26 CORRIDOR FROM GILCHRIST COUNTY LINE TO C.R. 26A E. OF NEWBERRY

RIGHT OF WAY MAP	FLORIDA DEPARTMENT OF TRANSPORTATION RIGHT OF WAY MAPPING	APPROVED BY _____ DATE 04/14/2022	BY _____ DATE 01/20/22	F.A.P. NO. N/A	SECTION 26070	MAPS PREPARED BY: VOLKERT, INC. - LB 4641 3901 SOUTH MAIN ST., SUITE 2 GAINESVILLE, FL 32601 (352) 372-9594	DATA SOURCE: 2607025.ZIP
		FOR DISTRICT SECRETARY _____	100% REVIEW RMW 07/26/22	STATE ROAD NO. 26	ALACHUA COUNTY	F.P. NO. 2078502	SCALE: 1" = 40'
		REVISION BY DATE REVISION BY DATE	CHECKED W FULGHUM 01/20/22				SHEET 12 OF 38