



Solid Waste and Resource Recovery Facilities Update

June 11, 2024



Solid Waste Facilities

Problem : Lack of capacity at the Hazardous Collection Facility (Leveda Brown Environmental Park) and the High Springs / Alachua Rural Collection Center.



High Springs / Alachua Rural Collection Center



Hazardous Waste Collection Facility



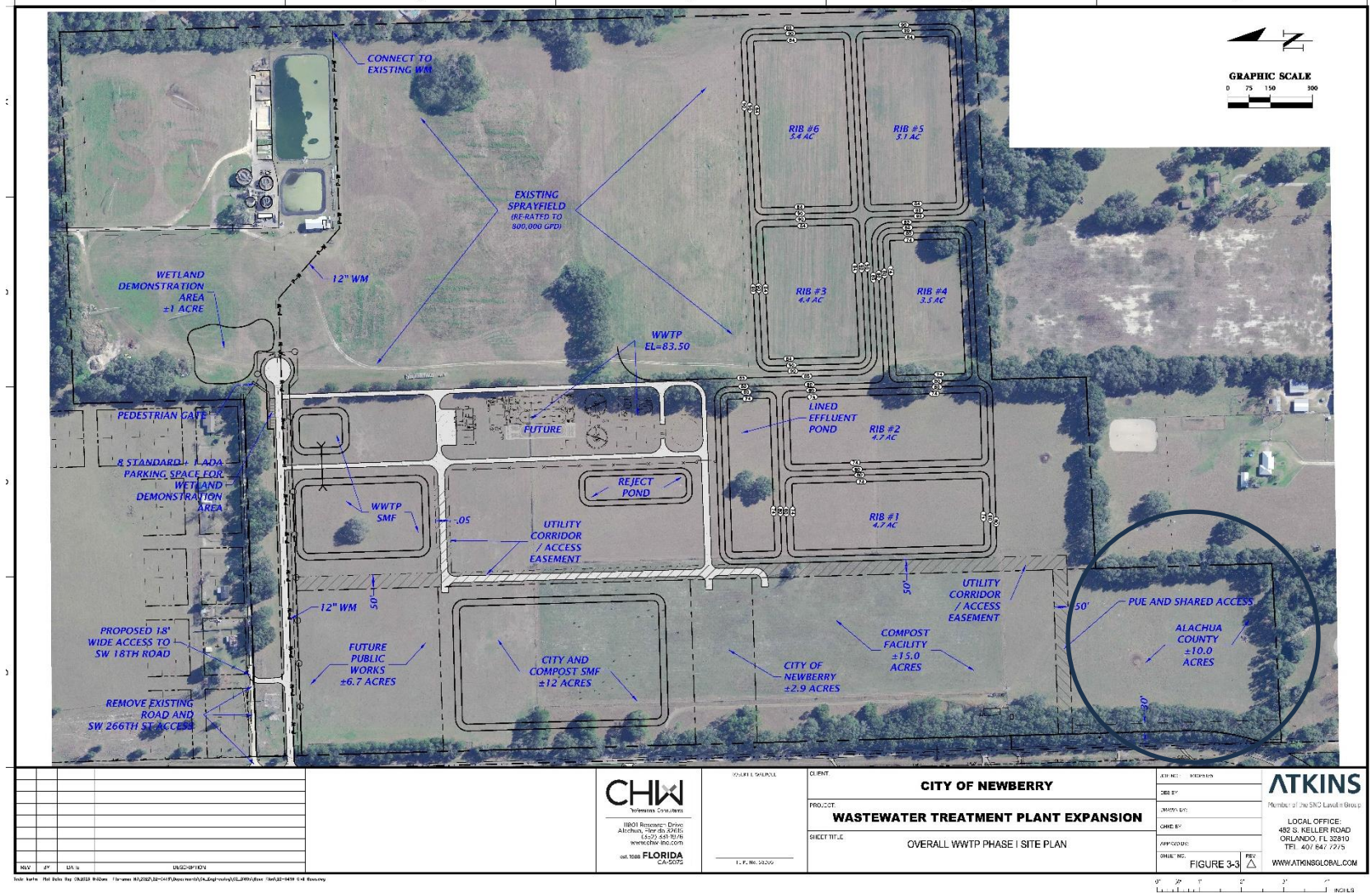
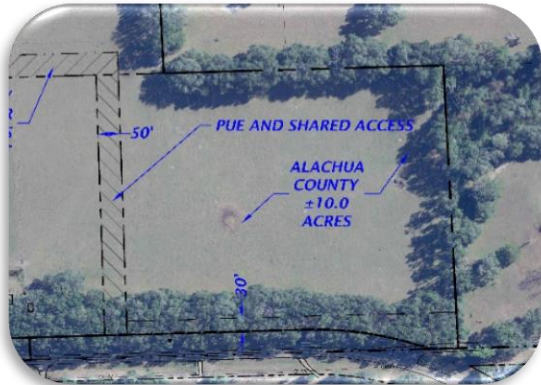
Prior Board Actions

- March 12, 2020 – Approval of construction a new Rural Collection Center and Hazardous Waste Collection Facility in the western part of the County.
- June 28, 2021 – Directed staff to explore the option of locating the solid waste facilities in the Newberry Environmental Park.
- July 10, 2023 – Directed staff to continue to work on draft interlocal agreement for the location of both facilities at the Newberry Environmental Park.
- August 22, 2023 – Directed staff to bring alternative options for the location of the Solid Waste and Resource Recovery facilities.
- October 24, 2023 – Directed staff to negotiate with the City of Newberry for the siting of both facilities at the Newberry Environmental Park.



Newberry Environmental Park

- +/- 10 Acres
- \$35,000 per acre
- Provide separate stormwater management
- Utilities in place by 2026



Estimated Costs

Rural Collection Center

Land Acquisition: \$175,000 (5 acres at \$35,000 per acre)

Land Development: \$474,500

Building Cost: \$125,000

Total: \$774,500 (\$1.5M in FY24 Budget)

Hazardous Waste Collection Facility

Land Acquisition: \$175,000 (5 acres at \$35,000 per acre)

Land Development: \$474,500

Building Cost: \$2,395,000

Total: \$3,044,500 (\$1.5M in FY24 Budget)



Hazardous Waste Collection Center

- Build a new Hazardous Collection Center at the EcoLoop
- Recondition existing facility for use as a bulk storage facility for the Environmental Park

