

## **Buck Bay Flatwoods Preserve Management Plan Summary**

<b>Date of Plan:</b>	TBD, 2024. Updated from May 26, 2015
<b>Management Area:</b>	637 acres (original Buck Bay acquisition: 464 acres; Raydient addition: 173 acres)
<b>Location:</b>	Central Alachua County, just north of the City of Gainesville. E911 address: 6502 North County Road 225, Gainesville
<b>Acquisition Dates:</b>	May 16, 2013 (original Buck Bay Cox and Moore acquisition); November 15, 2019 (Raydient Addition)
<b>Cost:</b>	Total: \$1,816,903: \$1,089,593 (original Buck Bay Cox and Moore acquisition) + \$727,310 (Raydient Addition)
<b>Funding Sources:</b>	2008 & 2016 Wild Spaces and Public Places (WSPP) Surtax.

### Summary:

Buck Bay Flatwoods Preserve is composed of three parcels of land located in central Alachua County, just north of the Gainesville city limits, at 6502 North County Road 225, Gainesville, FL. Outstanding ecological features of Buck Bay Flatwoods Preserve include nine distinct natural communities and a 4,000-foot section of Hatchet Creek, a locally significant blackwater stream. The Preserve is adjacent to the City of Gainesville Murphree Water Plant and lies within the primary and secondary protection zones of the city wellfields, with the closest active production well located within 200 feet of the Preserve boundary. Lands within the Preserve were acquired to improve and manage environmentally significant lands, and to protect water resources, wildlife habitats, and natural areas suitable for resource-based recreation.

### Key Management Objectives:

1. Maintain, enhance, or restore existing natural communities.
2. Inventory natural features of the site, including flora, fauna, and natural communities.
3. Protect populations of significant and listed plant and animal species.
4. Develop and implement a prescribed fire management plan.
5. Protect water resources from adverse impacts.
6. Effectively and responsibly manage cultural resources.
7. Promote public outdoor recreation and environmental education consistent with preserving the historic and natural resources of the site.

### Resource Management Issues:

- **FIRE MANAGEMENT** - Implement prescribed fire to restore and maintain fire-dependent natural communities within the Preserve.
- **RESTORATION** - Restore approximately 509 acres of pine flatwoods with timber management and prescribed fire and monitor the condition of other natural communities.
- **INVASIVE PLANTS** - Control or eradicate invasive, non-native plant species.
- **FERAL ANIMAL REMOVAL** – Monitor and remove feral animals as needed.
- **CULTURAL RESOURCES** - Protect known sites from disturbance and coordinate with Florida Department of State, Division of Historical Resources regarding identification and protection of cultural sites.

- MONITORING - Monitor Preserve through field inspections and photopoints to assess the effects of management activities and public use on the resources.

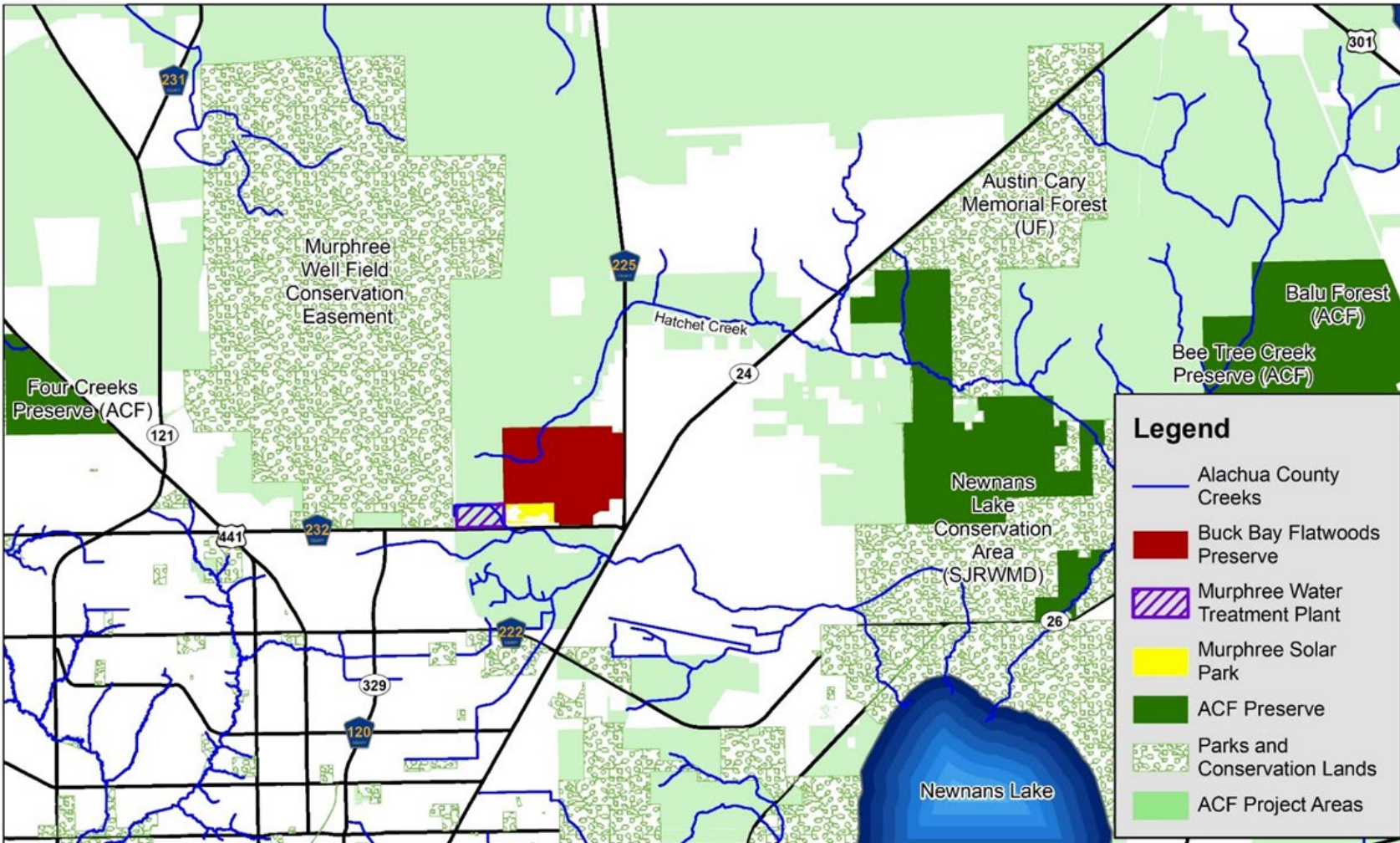
#### Site Development and Maintenance

- PHYSICAL IMPROVEMENTS – Maintain parking area and trailhead facilities, entrance sign, interpretive signs, and interpretive kiosk.
- RECREATION - Maintain a network of hiking/biking trails.
- EDUCATION – Develop and maintain interpretive exhibits and trails.
- MAINTENANCE – Maintain all improvements.

SECURITY – Conduct security patrols, install informational and regulatory signage as needed.



# Buck Bay Flatwoods Preserve Location Map



DISCLAIMER: This map and the spatial data it contains are made available as a public service, to be used for reference purposes only. The Alachua County Environmental Protection Department provides this information AS IS without warranty of any kind. The quality of the data is dependent on the various sources from which each data layer is obtained.