



Newberry
FLORIDA





SW 15th Avenue Reconstruction Project- State Road 45 to SW 260th Street

Armon Lowery, Project Manager
November 13, 2023

Recommended Action



1. Approve design and authorize the City Manager to proceed with bidding project when appropriate.
2. Authorize the City Manager to transmit a letter to FDOT requesting inclusion of a traffic circle at the SR 45 / SW 15th Avenue intersection with their next road improvement project on SR 45.



Background



- Conceptual design prepared in FY 2021 – 2022.
- In January 2023, the City Commission approved the conceptual design and authorized proceeding with design and development of construction plans.
- Design is 95% complete.
- Requires conveyance of 1.81 acres of property from the School Board of Alachua County for stormwater retention.

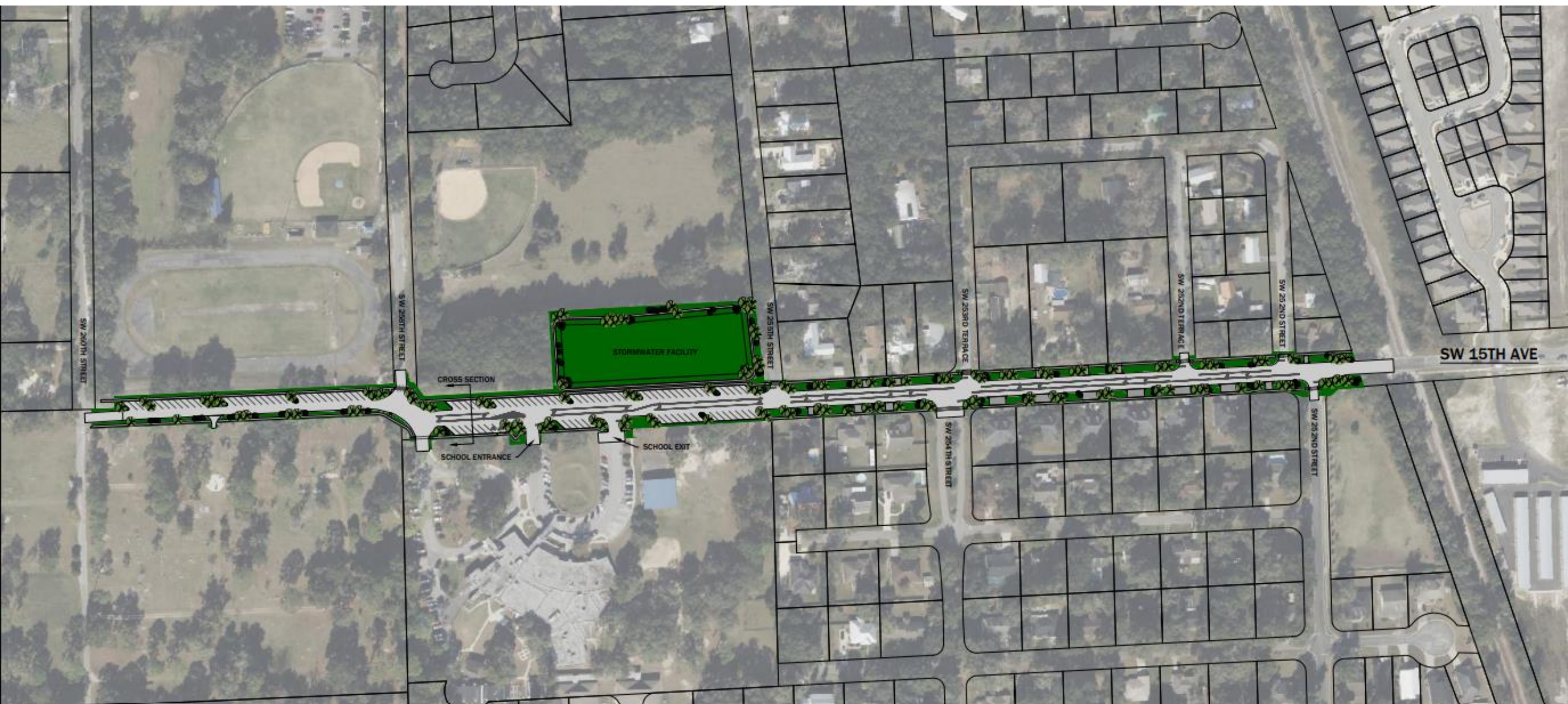
Design Criteria



1. Two (2) 11' travel lanes
2. 11 ft left turn lanes
3. Angle parking adjacent to schools – 103 total spaces
4. Sidewalks on both sides of street, w. streetlighting
5. Retention west of SW 255 Street
6. Swales east of SW 255 Street
7. Reconstruct overhead electric



Plan View - Overall



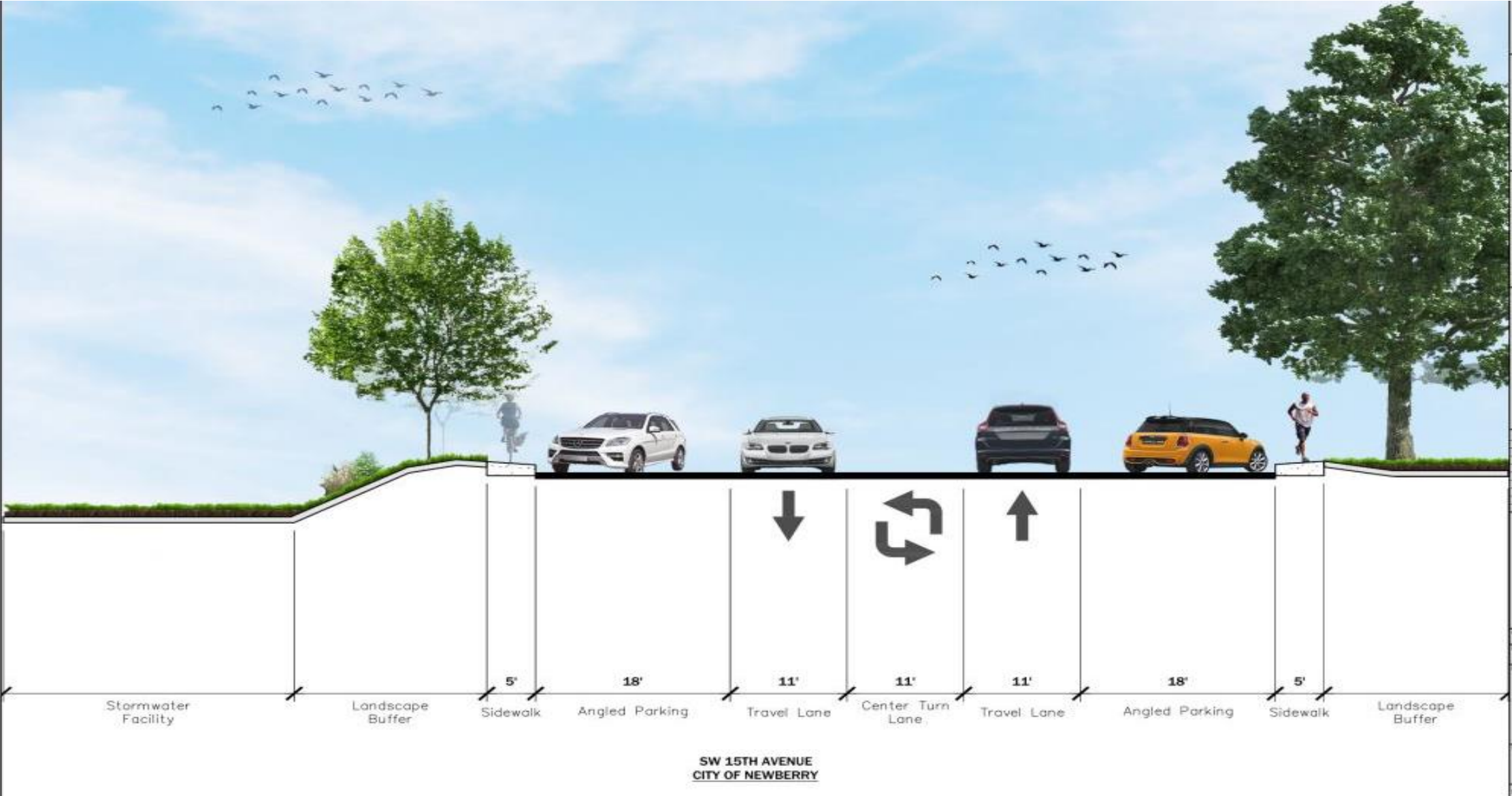
Plan View – Overall SW 255th Street to SW 260th Street

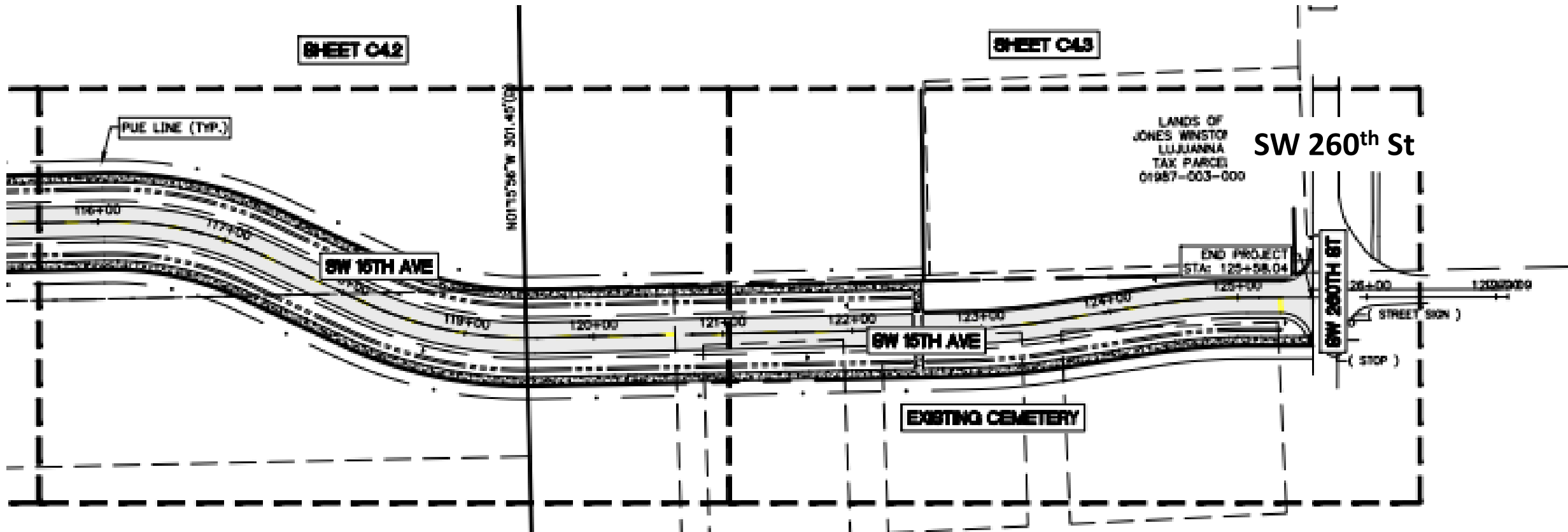


Plan View – Overall State Road 45 to SW 255th Street

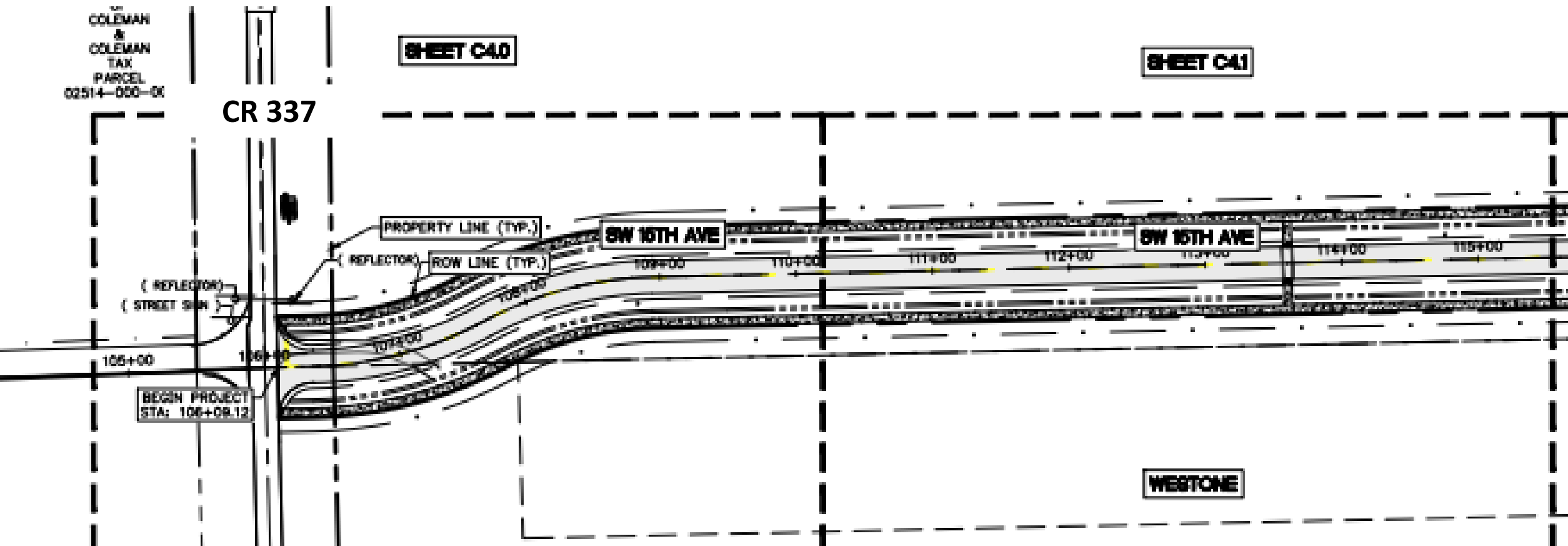


Profile View

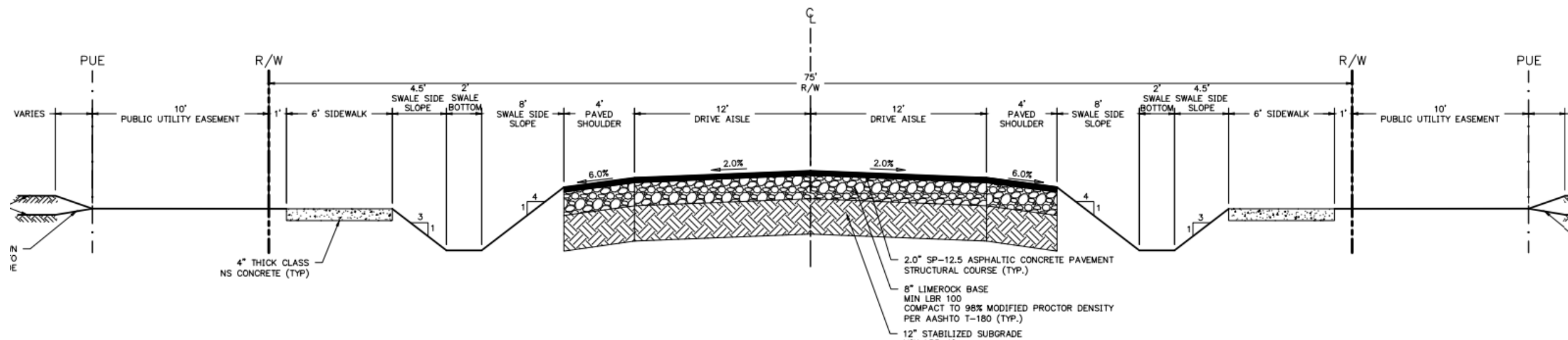


Plan View – Overall SW 260th Street to 26300 block

Plan View – Overall 26300 block to CR 337

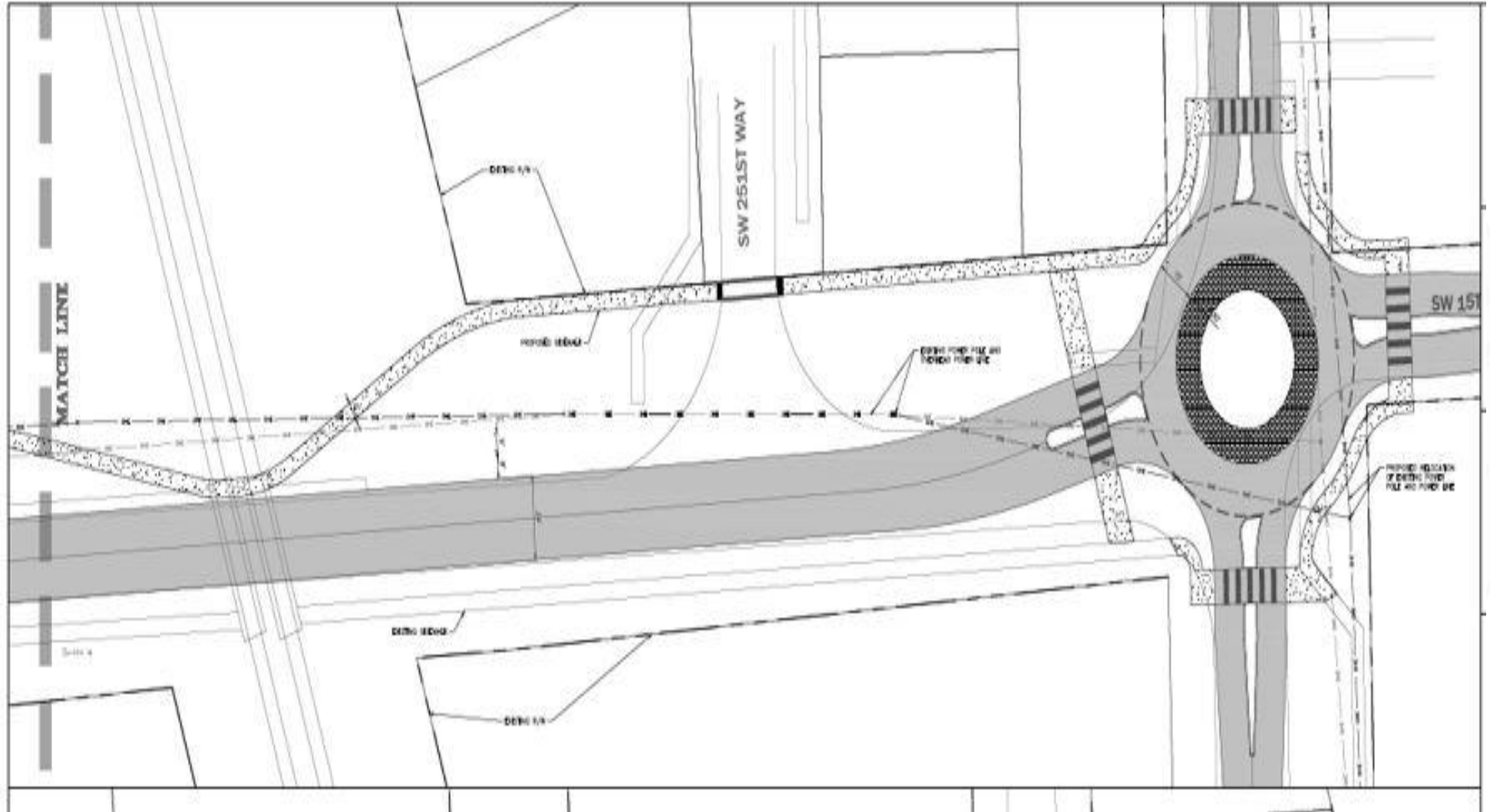


Plan View – Overall 26300 block to CR 337



State Road 45 Intersection

- Segment east of CSX Railroad planned for future.
- Includes traffic circle.
- FDOT could include in its next SR 45 reconstruction project



Question

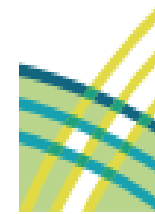


Recommended Action



1. Approve design and authorize the City Manager to proceed with bidding project when appropriate.
2. Authorize the City Manager to transmit a letter to FDOT requesting inclusion of a traffic circle at the SR 45 / SW 15th Avenue intersection with their next road improvement project on SR 45.





Newberry
FLORIDA

Contact Us



City of Newberry

25440 West Newberry Road
Newberry, FL 32669



352-472-2161

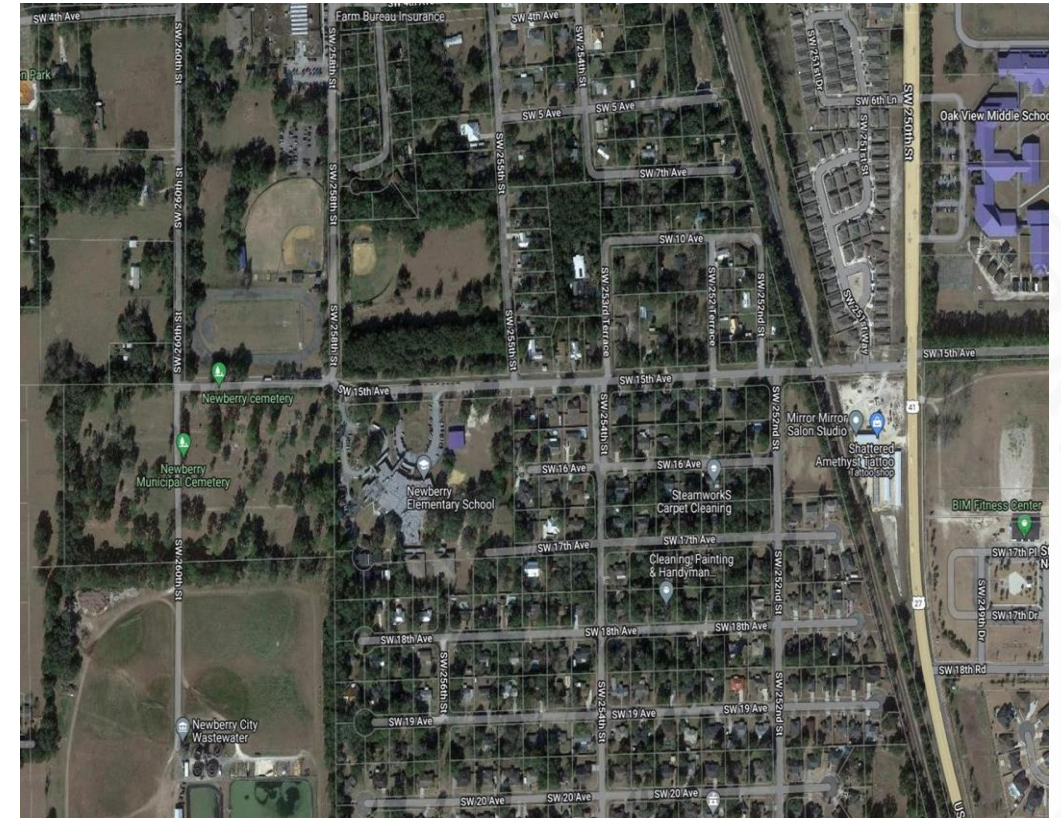


www.newberryfl.gov

Background



- Conceptual design prepared in FY 2021 – 2022.
- In January 2023, the City Commission approved the conceptual design and authorized proceeding with design and development of construction plans.
- Design is 95% complete.
- Requires conveyance of 1.81 acres of property from the School Board of Alachua County for stormwater retention.



DEPICTION OF A FUTURE TRAFFIC CIRCLE

