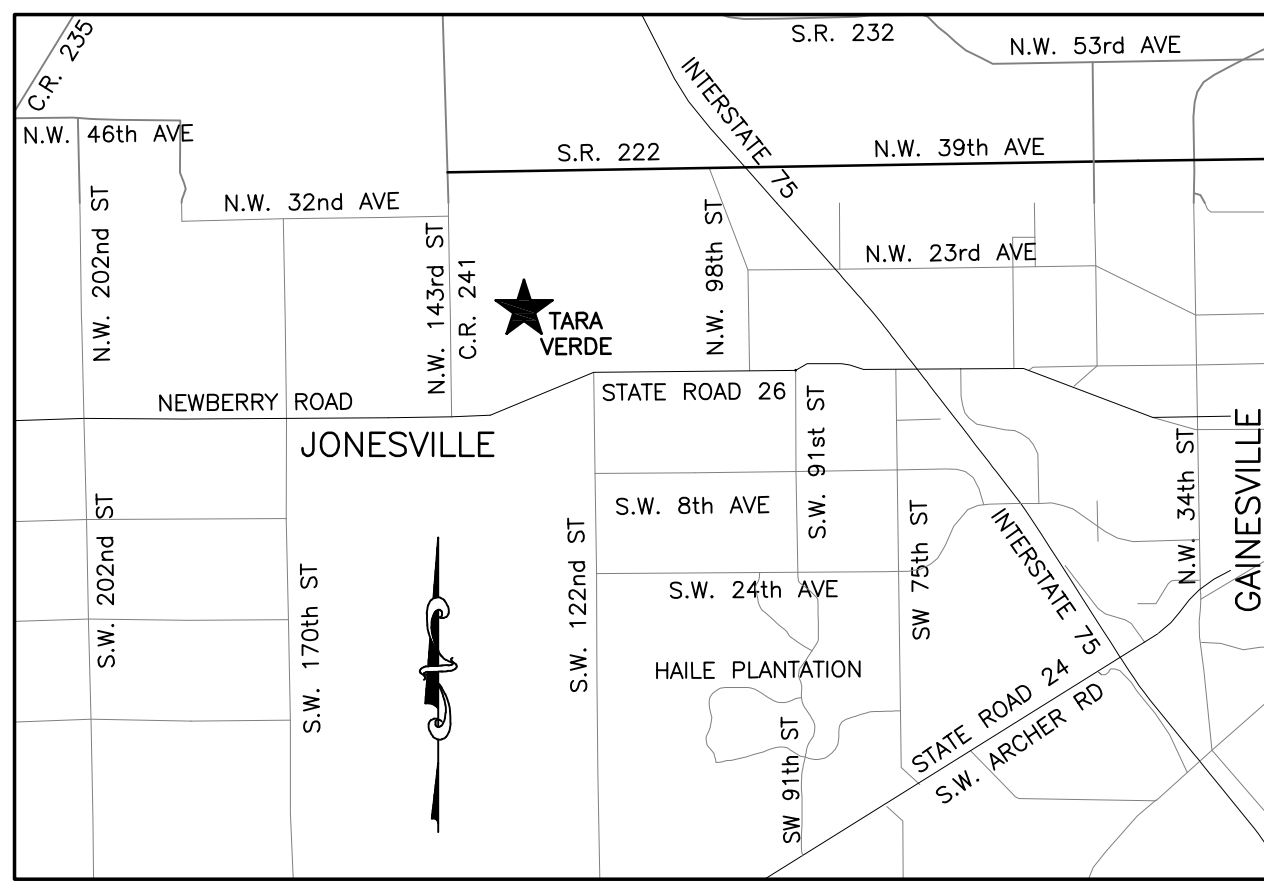


TARA VERDE PHASE I

LYING IN FRACTIONAL SECTION 34, TOWNSHIP 9 SOUTH, RANGE 18 EAST, ALACHUA COUNTY, FLORIDA



VICINITY MAP
NOT TO SCALE

CURVE	LENGTH	RADIUS	DELTA	TANGENT	CHORD	CHORD BEARING
C1	35.72'	75.00'	271°13'	18.20'	35.38'	S12°51'53"W
C2	57.51'	125.00'	262°14'	29.28'	57.01'	N12°24'10"E
C3	15.71'	100.00'	90°00'00"	10.00'	14.14'	N44°13'17"E
C4	70.95'	100.00'	40°08'08"	36.53'	68.63'	S19°15'50"W
C5	87.07'	100.00'	49°53'23"	46.51'	84.35'	S64°16'35"W
C6	62.83'	40.00'	90°00'00"	40.00'	56.57'	N45°46'43"W
C7	31.44'	40.00'	45°02'41"	18.59'	30.64'	N83°15'37"W
C8	31.39'	40.00'	44°52'47"	16.55'	30.59'	N23°15'37"W
C9	32.50'	100.00'	18°37'14"	16.39'	32.36'	S15°14'27"E
C10	118.03'	181.00'	37°21'40"	61.20'	115.95'	S19°27'33"E
C11	112.76'	181.00'	35°41'44"	58.28'	110.95'	N20°17'32"W
C12	62.83'	40.00'	90°00'00"	40.00'	56.57'	N44°13'17"E
C13	52.50'	75.00'	40°06'37"	27.38'	51.44'	S19°16'35"W
C15	50.64'	125.00'	23°12'40"	25.67'	50.29'	S27°43'34"W
C17	5.49'	125.00'	2°31'03"	2.75'	5.49'	S40°35'26"W
C19	32.94'	75.00'	25°09'50"	16.74'	32.68'	S15°54'49"W
C20	15.71'	100.00'	90°00'00"	10.00'	14.14'	N45°46'43"W
C21	137.59'	211.00'	37°21'40"	71.34'	135.16'	S19°27'33"E
C22	93.03'	151.00'	35°18'03"	48.05'	91.57'	N20°29'22"W
C23	132.49'	211.00'	35°58'48"	68.51'	130.33'	N20°09'03"W
C24	98.46'	151.00'	37°21'40"	51.05'	96.73'	S19°27'33"E
C33	48.01'	35.00'	78°35'49"	28.65'	44.34'	N49°34'49"E
C34	20.56'	40.00'	29°27'17"	10.51'	20.34'	S76°23'38"E

LOT FILL NOTE

HOME CONSTRUCTION ON LOTS 1 THROUGH 71, 122 THROUGH 127, 157 THROUGH 158, 161 THROUGH 163, AND 169 THROUGH 176 SHALL REQUIRE BEARING CAPACITY TESTING IN ACCORDANCE WITH FLORIDA BUILDING CODE SECTION 1804.2.2 REGARDING QUESTIONABLE SOILS.

NOTICE

ALL PLATTED UTILITY EASEMENTS SHALL PROVIDE THAT SUCH EASEMENTS SHALL ALSO BE EASEMENTS FOR THE CONSTRUCTION, INSTALLATION, MAINTENANCE, AND OPERATION OF CABLE TELEVISION SERVICES; PROVIDED, HOWEVER, NO SUCH CONSTRUCTION, INSTALLATION, MAINTENANCE, AND OPERATION OF CABLE TELEVISION SERVICES SHALL INTERFERE WITH THE FACILITIES AND SERVICES OF AN ELECTRIC, TELEPHONE, GAS, OR OTHER PUBLIC UTILITY. IN THE EVENT A CABLE TELEVISION COMPANY DAMAGES THE FACILITIES OF A PUBLIC UTILITY, IT SHALL BE SOLELY RESPONSIBLE FOR THE DAMAGES. THIS SECTION SHALL NOT APPLY TO THE PRIVATE EASEMENTS GRANTED TO OR OBTAINED BY A PARTICULAR ELECTRIC, TELEPHONE, GAS, OR OTHER PUBLIC UTILITY. SUCH CONSTRUCTION, INSTALLATION, MAINTENANCE, AND OPERATION SHALL COMPLY WITH THE NATIONAL ELECTRICAL SAFETY CODE AS ADOPTED BY THE FLORIDA PUBLIC SERVICE COMMISSION.

NOTICE

THIS PLAT, AS RECORDED IN ITS GRAPHIC FORM, IS THE OFFICIAL DEPICTION OF THE SUBDIVIDED LANDS DESCRIBED HEREIN AND WILL, IN NO CIRCUMSTANCES BE SUPPLANTED IN AUTHORITY BY ANY OTHER GRAPHIC OR DIGITAL FORM OF THE PLAT. THERE MAY BE ADDITIONAL RESTRICTIONS THAT ARE NOT RECORDED ON THIS PLAT THAT MAY BE FOUND IN THE PUBLIC RECORDS OF THIS COUNTY.

SURVEYOR'S NOTES

- THE BEARINGS AND COORDINATES SHOWN HEREON ARE STATE PLANE FLORIDA NORTH, BASED ON GPS MEASUREMENTS ON THE FLORIDA PERMANENT REFERENCE NETWORK (FPRN). DATUM USED IS NORTH AMERICAN DATUM OF 1983 (NAD83).
- ELEVATIONS SHOWN HEREON ARE BASED ON GPS MEASUREMENTS ON THE GEODETIC REFERENCE SYSTEM 1980 (GEOID 12A) FROM THE FLORIDA PERMANENT REFERENCE NETWORK (FPRN). ALL ELEVATIONS SHOWN HEREON ARE NORTH AMERICAN VERTICAL DATUM OF 1988. ALL SITE BENCHMARKS SHOULD BE CHECKED AND VERIFIED BEFORE USE.
- BUILDING SETBACKS SHALL BE CONSISTENT WITH THE ZONING DISTRICT SETBACKS IN CHAPTER 403, UNIFIED LAND DEVELOPMENT CODE. CONTACT THE ALACHUA COUNTY DEPARTMENT OF PLANNING FOR ANY AND ALL SETBACK REQUIREMENTS PRIOR TO BEGINNING LOT CONSTRUCTION.
- THE ERROR IN CLOSURE OF THE BOUNDARY OF THIS REPLAT DOES NOT EXCEED 1 FOOT IN 10,000 FEET.
- LOT CORNERS AND PERMANENT CONTROL POINTS WILL BE SET IN ACCORDANCE WITH CHAPTER 177.091 (8) AND (9) OF THE FLORIDA STATUTES.
- THE SUBJECT PROPERTY LIES WITHIN FLOOD ZONE X (AREAS DETERMINED TO BE OUTSIDE THE 0.2% ANNUAL CHANCE FLOODPLAIN) AS SHOWN ON FLOOD INSURANCE RATE MAP NUMBER 1200100290E FOR ALACHUA COUNTY, FLORIDA, EFFECTIVE DATE SEPTEMBER 24, 2021, FOR ALACHUA COUNTY UNINCORPORATED AREAS, COMMUNITY NUMBER 120001 PANEL NUMBER 0290 SUFFIX E.
- TARA VERDE PHASE I IS AFFECTED BY A 15' WIDE INGRESS & EGRESS EASEMENT RECORDED IN O.R. 1782, PAGE 1864 (AS SHOWN HEREON).
- THIS PLAT IS 4 SHEETS IN TOTAL AND IS NOT VALID WITHOUT ALL SHEETS.

FLOWERS SURVEYING AND MAPPING INC.
LICENSED BUSINESS No. 8395
955 S.E. BIBLE CAMP STREET
HIGH SPRINGS, FLORIDA 32643
PHONE: (386) 462-0130
EMAIL: FLOWERSSURVEYING@GMAIL.COM

LEGAL DESCRIPTION - TARA VERDE PHASE I

A PARCEL OF LAND LYING IN FRACTIONAL SECTION 34, TOWNSHIP 9 SOUTH, RANGE 18 EAST, ALACHUA COUNTY, FLORIDA, BEING MORE PARTICULARLY DESCRIBED AS FOLLOWS:

COMMENCE AT A NAIL & DISK (PRM 6602) AT THE SOUTHEAST CORNER OF TARA ESMERALDA PHASE I (PER PLAT BOOK 39, PAGES 1-2) FOR THE POINT OF BEGINNING; THENCE RUN NORTH 00°46'43" WEST, ALONG THE EAST LINE OF SAID TARA ESMERALDA PHASE I, A DISTANCE OF 287.50 FEET TO A 4"x4" CONCRETE MONUMENT (PRM 6602); THENCE RUN NORTH 89°13'17" EAST, A DISTANCE OF 170.17 FEET TO A 4"x4" CONCRETE MONUMENT (PRM 6602); THENCE RUN NORTH 00°46'43" WEST, A DISTANCE OF 95.00 FEET TO A 4"x4" CONCRETE MONUMENT (PRM 6602); THENCE RUN NORTH 89°13'17" EAST, A DISTANCE OF 472.12 FEET TO A 4"x4" CONCRETE MONUMENT (PRM 6602); THENCE RUN SOUTH 00°46'43" EAST, A DISTANCE OF 112.50 FEET TO A 4"x4" CONCRETE MONUMENT (PRM 6602); THENCE RUN SOUTH 89°13'17" EAST, A DISTANCE OF 7.88 FEET TO A 4"x4" CONCRETE MONUMENT (PRM 6602); THENCE RUN NORTH 00°46'43" EAST, A DISTANCE OF 330.00 FEET TO A 4"x4" CONCRETE MONUMENT (PRM 6602); THENCE RUN NORTH 89°13'17" EAST, A DISTANCE OF 115.00 FEET TO A 4"x4" CONCRETE MONUMENT (PRM 6602); THENCE RUN SOUTH 00°46'43" EAST, A DISTANCE OF 305.00 FEET TO A 4"x4" CONCRETE MONUMENT (PRM 6602); THENCE RUN NORTH 89°13'17" EAST, A DISTANCE OF 115.00 FEET TO A 4"x4" CONCRETE MONUMENT (PRM 6602); THENCE RUN SOUTH 00°46'43" EAST, A DISTANCE OF 65.62 FEET TO THE POINT OF CURVATURE OF A CURVE CONCAVE TO THE NORTHWEST, HAVING A RADIUS OF 75.00 FEET; THENCE RUN SOUTHWESTERLY, ALONG THE ARC OF SAID CURVE, AN ARC DISTANCE OF 35.72 FEET, THROUGH A CENTRAL ANGLE OF 27°17'13", SAID CURVE HAVING A CHORD BEARING AND DISTANCE OF SOUTH 12°51'53" WEST, 35.38 FEET TO A 4"x4" CONCRETE MONUMENT (PRM 6602) AND THE END OF SAID CURVE; THENCE RUN SOUTH 65°48'05" EAST, A DISTANCE OF 50.02 FEET TO A 4"x4" CONCRETE MONUMENT (PRM 6602) AND THE BEGINNING OF A NON-TANGENT CURVE, CONCAVE TO THE NORTHWEST, HAVING A RADIUS OF 125.00 FEET; THENCE RUN NORTHEASTERLY, ALONG THE ARC OF SAID CURVE, AN ARC DISTANCE OF 57.51 FEET, THROUGH A CENTRAL ANGLE OF 26°21'46", SAID CURVE HAVING A CHORD BEARING AND DISTANCE OF NORTH 12°24'10" EAST, 57.01 FEET TO A 4"x4" CONCRETE MONUMENT (PRM 6602) AND THE POINT OF TANGENCY; THENCE RUN NORTH 00°46'43" WEST, A DISTANCE OF 362.62 FEET TO A 4"x4" CONCRETE MONUMENT (PRM 6602) AND THE POINT OF CURVATURE OF A CURVE CONCAVE TO THE SOUTHWEST, HAVING A RADIUS OF 10.00 FEET; THENCE RUN NORTHEASTERLY, ALONG THE ARC OF SAID CURVE, AN ARC DISTANCE OF 15.71 FEET, THROUGH A CENTRAL ANGLE OF 90°00'00", SAID CURVE HAVING A CHORD BEARING AND DISTANCE OF NORTH 44°13'17" EAST, 14.14 FEET TO A 4"x4" CONCRETE MONUMENT (PRM 6602) AND THE POINT OF TANGENCY; THENCE RUN NORTH 89°13'17" EAST, A DISTANCE OF 21.00 FEET TO A 4"x4" CONCRETE MONUMENT (PRM 6602); THENCE RUN NORTH 00°46'43" WEST, A DISTANCE OF 230.00 FEET TO A 4"x4" CONCRETE MONUMENT (PRM 6602); THENCE RUN NORTH 89°13'17" EAST, A DISTANCE OF 107.08 FEET TO A 4"x4" CONCRETE MONUMENT (PRM 6602) ON THE EAST LINE OF FRACTIONAL SECTION 34; THENCE RUN SOUTH 00°44'32" EAST, ALONG SAID EAST LINE, A DISTANCE OF 272.19 FEET TO A 4"x4" CONCRETE MONUMENT (PRM 6602); THENCE RUN SOUTH 01°23'15" WEST, CONTINUING ALONG SAID EAST LINE, A DISTANCE OF 16.78 FEET TO A 4"x4" CONCRETE MONUMENT (PRM 509) AT THE NORTHWEST CORNER OF ARBOR GREENS PHASE II, UNIT I (PER PLAT BOOK 29, PAGES 80-81); THENCE RUN SOUTH 00°48'55" EAST, ALONG SAID EAST LINE AND ALONG THE WEST LINE OF SAID ARBOR GREENS PHASE II, UNIT I, A DISTANCE OF 578.18 FEET TO A

LEGAL DESCRIPTION - CONTINUED

4"x4" CONCRETE MONUMENT (PRM 6602); THENCE RUN SOUTH 00°48'35" EAST, CONTINUING ALONG SAID EAST LINE AND ALONG SAID WEST LINE OF ARBOR GREENS PHASE II, UNIT I, A DISTANCE OF 315.11 FEET TO A 4"x4" CONCRETE MONUMENT (PRM 6602) AT THE NORTHEAST CORNER OF TARA GREENS 2 (PER PLAT BOOK 38, PAGE 18); THENCE RUN SOUTH 89°32'29" WEST, ALONG THE NORTH LINE OF SAID TARA GREENS 2, A DISTANCE OF 1112.69 FEET TO A 4"x4" CONCRETE MONUMENT (PRM 6602) ON THE EAST LINE OF STRAWBERRY FIELDS UNIT 2 (PER PLAT BOOK 25, PAGE 89); THENCE RUN NORTH 00°48'44" WEST, ALONG THE EAST LINE AND ALONG THE EAST LINE OF STRAWBERRY FIELDS UNIT 1 (PER PLAT BOOK 25, PAGE 88), A DISTANCE OF 315.16 FEET TO A 4"x4" CONCRETE MONUMENT (PRM 6602); THENCE RUN NORTH 00°45'57" WEST, CONTINUING ALONG SAID EAST LINE, A DISTANCE OF 610.84 FEET TO A 4"x4" CONCRETE MONUMENT (PRM 6602) AT THE NORTHEAST CORNER OF SAID STRAWBERRY FIELDS UNIT 1; THENCE RUN NORTH 00°55'45" WEST, A DISTANCE OF 30.04 FEET TO THE POINT OF BEGINNING.

LESS AND EXCEPT

A PARCEL OF LAND LYING IN FRACTIONAL SECTION 34, TOWNSHIP 9 SOUTH, RANGE 18 EAST, ALACHUA COUNTY, FLORIDA, BEING MORE PARTICULARLY DESCRIBED AS FOLLOWS:

COMMENCE AT A NAIL & DISK (PRM 6602) AT THE SOUTHEAST CORNER OF TARA ESMERALDA PHASE I (PER PLAT BOOK 39, PAGES 1-2) FOR THE POINT OF BEGINNING; THENCE RUN SOUTH 33°49'00" EAST, A DISTANCE OF 64.33 FEET TO A 4"x4" CONCRETE MONUMENT (PRM 6602) AND THE POINT OF BEGINNING; THENCE RUN NORTH 89°29'29" EAST, A DISTANCE OF 209.84 FEET TO A 4"x4" CONCRETE MONUMENT (PRM 6602); THENCE RUN NORTH 89°27'27" EAST, A DISTANCE OF 210.06 FEET TO A 4"x4" CONCRETE MONUMENT (PRM 6602); THENCE RUN SOUTH 01°37'06" EAST, A DISTANCE OF 210.37 FEET TO A 4"x4" CONCRETE MONUMENT (PRM 6602); THENCE RUN SOUTH 89°32'56" WEST, A DISTANCE OF 209.85 FEET TO A 4"x4" CONCRETE MONUMENT (PRM 6602); THENCE RUN SOUTH 89°31'46" WEST, A DISTANCE OF 209.84 FEET TO A 4"x4" CONCRETE MONUMENT (PRM 6602); THENCE RUN NORTH 01°42'31" WEST, A DISTANCE OF 209.90 FEET TO THE POINT OF BEGINNING.

TARA VERDE PHASE I, CONTAINING 26.58 ACRES, MORE OR LESS.

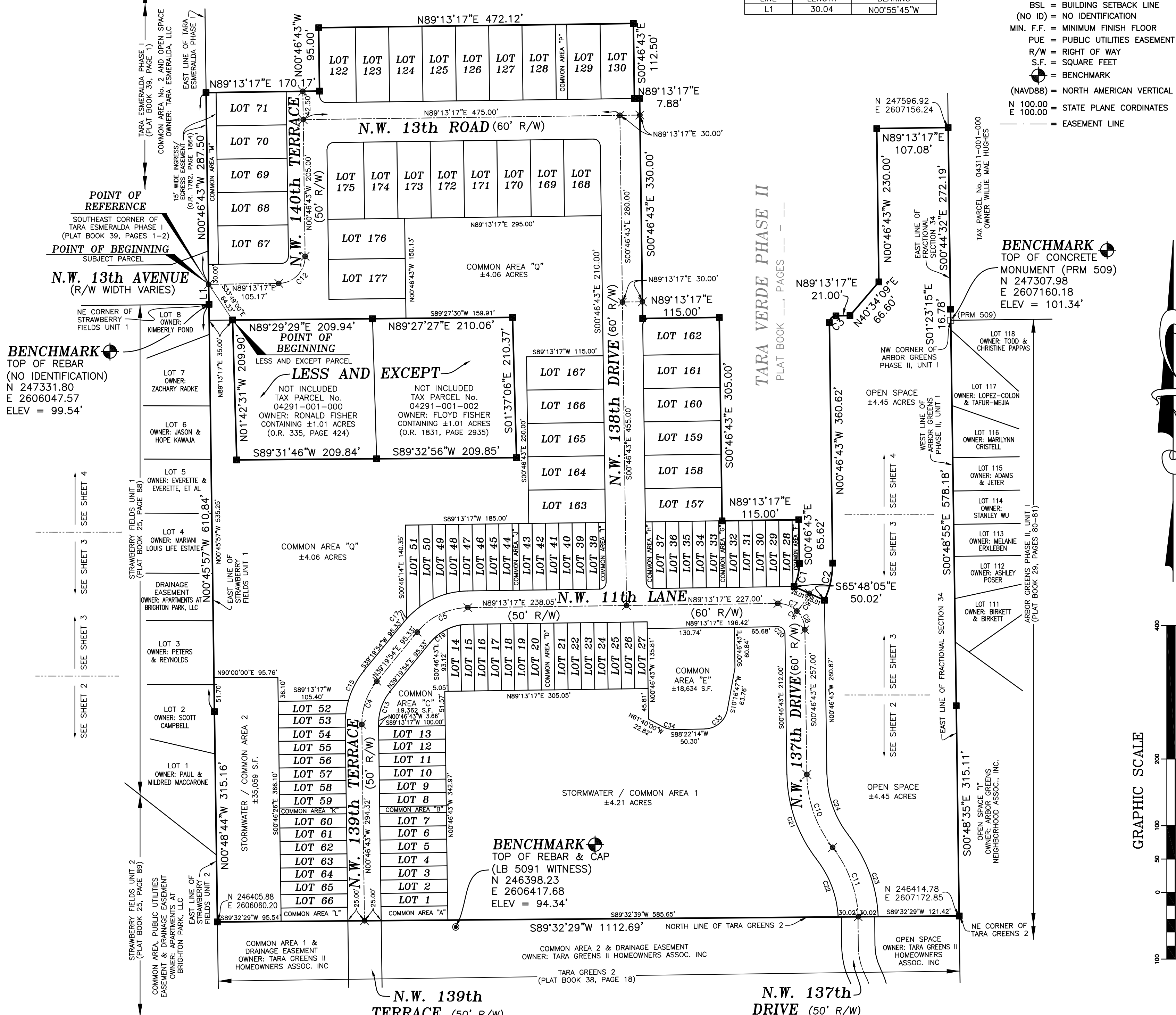
LEGEND

- = SET PRM - 4"x4" CONCRETE MONUMENT (PRM 6602)
- = FOUND 4"x4" CONCRETE MONUMENT (NO IDENTIFICATION)
- ✕ = SET PCP - NAIL & DISK (PRM 6602)
- ELEV = ELEVATION
- O.R. = OFFICIAL RECORDS BOOK
- POB = PERMANENT CONTROL POINT
- PRM = PERMANENT REFERENCE MONUMENT
- BSL = BUILDING SETBACK LINE
- (NO ID) = NO IDENTIFICATION
- MIN. F.F. = MINIMUM FINISH FLOOR
- PUE = PUBLIC UTILITIES EASEMENT
- R/W = RIGHT OF WAY
- S.F. = SQUARE FEET
- ⊕ = BENCHMARK
- (NAD88) = NORTH AMERICAN VERTICAL DATUM OF 1988
- N 100.00, E 100.00 = STATE PLANE COORDINATES
- - - = EASEMENT LINE

LINE	LENGTH	BEARING
LI	30.04	N00°55'45"W

TARA VERDE PHASE II

PLAT BOOK _____ PAGES _____



OWNER'S CERTIFICATION AND DEDICATION

I, SAYED MOUKHTARA, AS MEMBER OF ALACHUA VERDE, LLC, DO HEREBY CERTIFY THAT ALACHUA VERDE, LLC, IS THE OWNER OF THE LANDS DESCRIBED HEREON AND HAVE CAUSED SAID LANDS TO BE SURVEYED AND PLATTED TO BE KNOWN AS TARA VERDE PHASE I AND DO HEREBY CONSENT TO THE SUBDIVISION THEREOF, AS SHOWN; AND I DO HEREBY DEDICATE, TO THE TARA VERDE HOMEOWNER'S ASSOCIATION, FOREVER, THE PUBLIC UTILITY EASEMENTS, COMMON AREAS, OPEN SPACE, AND STORMWATER AREAS, AS SHOWN HEREON, AND DO FURTHER DEDICATE THE PUBLIC UTILITY EASEMENTS TO THE PUBLIC, FOREVER. MANAGEMENT OF THE STORM WATER MANAGEMENT FACILITIES/ DRAINAGE IMPROVEMENTS WILL BE THE SOLE RESPONSIBILITY OF THE TARA VERDE HOMEOWNER'S ASSOCIATION. THE PUBLIC HAS THE RIGHT TO DISCHARGE INTO THE BASIN SYSTEM.

SAYED MOUKHTARA
MEMBER
ALACHUA VERDE, LLC

WITNESS
WITNESS PRINTED
WITNESS
WITNESS PRINTED

STATE OF FLORIDA - COUNTY OF ALACHUA

I HEREBY CERTIFY THAT ON THIS DAY PERSONALLY APPEARED BEFORE ME, SAYED MOUKHTARA, AS PRESIDENT OF TARA VERDE, INC., A FLORIDA CORPORATION, WHO IS PERSONALLY KNOWN TO ME, OR WHO HAS PRODUCED INSTRUMENT AS HIS FREE ACT AND DEED, WITH FULL AUTHORITY TO EXECUTE SAME.

WITNESS MY HAND AND OFFICIAL SEAL THIS _____ DAY OF _____ A.D. 2024

NOTARY PUBLIC - STATE OF FLORIDA

MY COMMISSION EXPIRES: _____

MORTGAGEE'S APPROVAL

MARK MATSON, AS MORTGAGEE, HOLDER OF THAT CERTAIN MORTGAGE RECORDED IN OFFICIAL RECORDS BOOK 5014, PAGE 14 OF THE PUBLIC RECORDS OF ALACHUA COUNTY, FLORIDA, HEREBY HEREBY CONSENT AND AGREE TO THE PLATTING OF THE LANDS SHOWN HEREON AS "TARA VERDE PHASE I" AND TO THE DEDICATION(S) HEREON.

MARK MATSON

WITNESS
WITNESS PRINTED
WITNESS
WITNESS PRINTED

STATE OF FLORIDA - COUNTY OF ALACHUA

I HEREBY CERTIFY THAT ON THIS DAY PERSONALLY APPEARED BEFORE ME, MARK MATSON, WHO IS PERSONALLY KNOWN TO ME, OR WHO HAS PRODUCED INSTRUMENT AS HIS FREE ACT AND DEED, WITH FULL AUTHORITY TO EXECUTE SAME.

WITNESS MY HAND AND OFFICIAL SEAL THIS _____ DAY OF _____ A.D. 2024

NOTARY PUBLIC - STATE OF FLORIDA

MY COMMISSION EXPIRES: _____

CERTIFICATION AND APPROVAL FOR ALACHUA COUNTY, FLORIDA

WE, THE UNDERSIGNED DO HEREBY CERTIFY THAT THIS PLAT CONFORMS TO THE REQUIREMENTS OF ALACHUA COUNTY'S ORDINANCES AND REGULATIONS AS FOLLOWS:

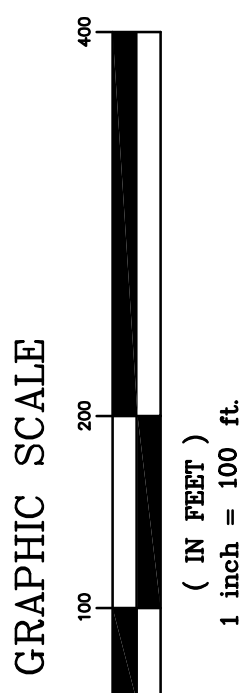
SURVEYING REQUIREMENTS:	DATE _____	COUNTY SURVEYOR _____
ENGINEERING REQUIREMENTS:	DATE _____	COUNTY ENGINEER _____
FORM AND LEGALITY:	DATE _____	COUNTY ATTORNEY _____
APPROVED BY ALACHUA COUNTY:	DATE _____	CHAIR, BOARD OF COUNTY COMMISSIONERS _____
RECEIVED AND FILED FOR RECORD ON THIS _____ DAY OF _____ A.D. 2024		
CLERK _____		
DEPUTY CLERK _____		

SURVEYOR'S CERTIFICATION

I DO HEREBY CERTIFY THAT THIS PLAT ENTITLED "TARA VERDE PHASE I" IS A TRUE AND CORRECT REPRESENTATION OF A SURVEY MADE OF THE DESCRIBED LANDS, UNDER MY RESPONSIBLE DIRECTION AND SUPERVISION AND THAT THIS PLAT AND SURVEY COMPLIES WITH ALL REQUIREMENTS AS SET FORTH IN CHAPTER 177 OF THE FLORIDA STATUTES.

LEIGH ANN FLOWERS
PROFESSIONAL SURVEYOR AND MAPPER
FLORIDA REGISTRATION NUMBER 6602

DATE _____



TARA VERDE PHASE I

LYING IN FRACTIONAL SECTION 34, TOWNSHIP 9 SOUTH,
RANGE 18 EAST, ALACHUA COUNTY, FLORIDA



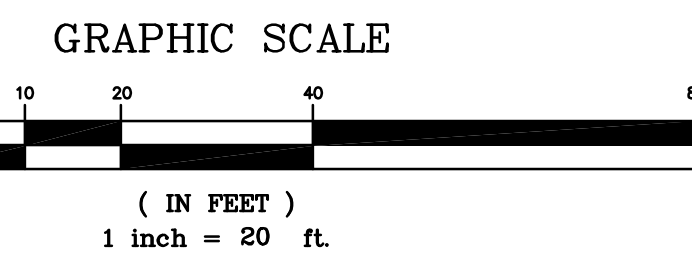
LOT 14	LOT 15	LOT 16	LOT 17
S89°13'17"W 305.05'			

STORMWATER / COMMON AREA 1
±4.21 ACRES

STORMWATER / COMMON AREA 2
±35,059 S.F.

- LEGEND**
- = SET PRM - 4"x4" CONCRETE MONUMENT (PSM 6602)
 - = FOUND 4"x4" CONCRETE MONUMENT (NO IDENTIFICATION)
 - ⊗ = SET PCP - NAIL & DISK (PSM 6602)
 - ELEV = ELEVATION
 - O.R. = OFFICIAL RECORDS BOOK
 - PCP = PERMANENT CONTROL POINT
 - PRM = PERMANENT REFERENCE MONUMENT
 - BSL = BUILDING SETBACK LINE
 - MIN. F.F. = MINIMUM FINISH FLOOR
 - PUE = PUBLIC UTILITIES EASEMENT
 - R/W = RIGHT OF WAY
 - S.F. = SQUARE FEET
 - ⊕ = BENCHMARK
 - (NAVD88) = NORTH AMERICAN VERTICAL DATUM OF 1988
 - N 100.00
E 100.00 = STATE PLANE COORDINATES
 - - - = EASEMENT LINE

CURVE TABLE						
CURVE	LENGTH	RADIUS	DELTA	TANGENT	CHORD	CHORD BEARING
C4	70.05'	100.00'	40°08'08"	36.53'	68.63'	S19°15'50"W
C13	52.50'	75.00'	40°06'37"	27.38'	51.44'	S19°16'35"W
C14	87.51'	125.00'	40°06'37"	45.63'	85.73'	S19°16'35"W
C15	50.64'	125.00'	2°31'24.0"	25.67'	50.29'	S27°43'34"W
C42	20.49'	125.00'	9°23'23"	10.27'	20.46'	S11°25'32"W
C43	16.38'	125.00'	7°30'34"	8.20'	16.37'	S02°58'34"W



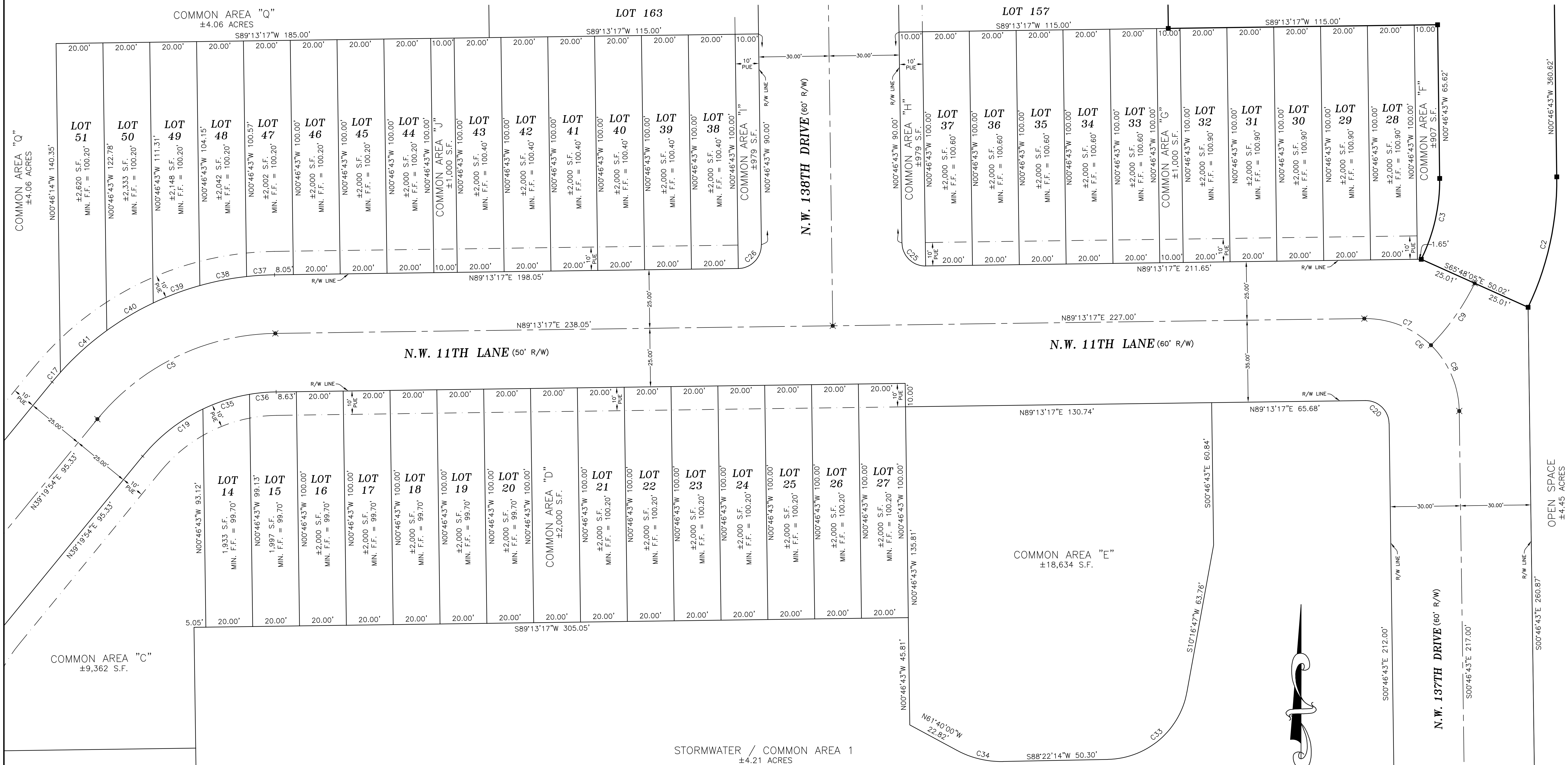
FLOWERS SURVEYING AND MAPPING INC.
 LICENSED BUSINESS No. 8395
 955 S.E. BIBLE CAMP STREET
 HIGH SPRINGS, FLORIDA 32643
 PHONE: (386) 462-0130
 EMAIL: FLOWERSSURVEYING@GMAIL.COM

COMMON AREA 1 & DRAINAGE EASEMENT
 TARA GREENS 2 (PLAT BOOK 38, PAGE 18)
 OWNER: TARA GREENS II HOMEOWNERS ASSOC. INC

COMMON AREA 2 & DRAINAGE EASEMENT
 TARA GREENS 2 (PLAT BOOK 38, PAGE 18)
 OWNER: TARA GREENS II HOMEOWNERS ASSOC. INC

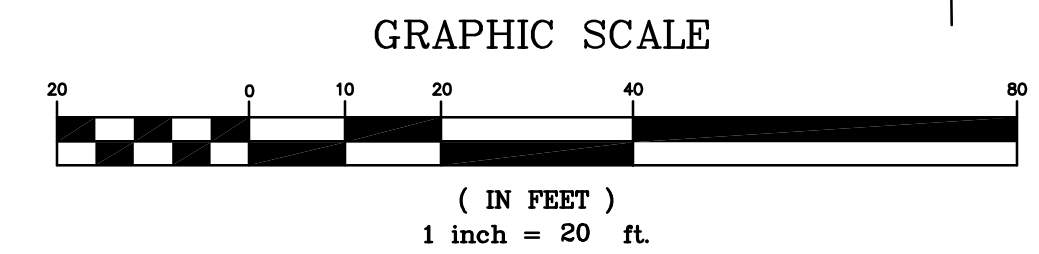
TARA VERDE PHASE I

LYING IN FRACTIONAL SECTION 34, TOWNSHIP 9 SOUTH,
RANGE 18 EAST, ALACHUA COUNTY, FLORIDA



CURVE TABLE						
CURVE	LENGTH	RADIUS	DELTA	TANGENT	CHORD	CHORD BEARING
C2	57.51'	125.00'	26°21'46"	29.28'	57.01'	N12°24'10"E
C3	35.72'	75.00'	27°17'13"	18.20'	35.38'	N12°51'53"E
C5	87.07'	100.00'	49°53'23"	46.51'	84.35'	S64°16'35"W
C6	62.83'	40.00'	90°00'00"	40.00'	56.57'	N45°46'43"W
C7	31.44'	40.00'	45°02'13"	16.58'	30.64'	N68°15'37"W
C8	31.39'	40.00'	44°57'43"	16.55'	30.59'	N2°31'53"W
C9	32.50'	100.00'	18°37'14"	16.39'	32.36'	N35°14'27"E
C17	5.49'	125.00'	2°31'03"	2.75'	5.49'	S40°35'26"W
C19	32.94'	75.00'	25°09'50"	16.74'	32.68'	S51°54'49"W
C20	15.71'	10.00'	90°00'00"	10.00'	14.14'	N45°46'43"W
C25	15.71'	10.00'	90°00'00"	10.00'	14.14'	S45°46'43"E
C26	15.71'	10.00'	90°00'00"	10.00'	14.14'	N44°13'17"E
C33	48.01'	35.00'	78°35'49"	28.65'	44.34'	N49°34'49"E
C34	20.56'	40.00'	28°27'13"	10.51'	20.34'	S78°23'38"E
C35	20.95'	75.00'	16°00'20"	10.54'	20.88'	S72°29'54"W
C36	11.41'	75.00'	8°43'12"	5.72'	11.40'	S84°51'41"W
C37	11.97'	125.00'	5°29'10"	5.99'	11.96'	S86°28'42"W
C38	20.34'	125.00'	9°19'24"	10.19'	20.32'	S79°04'25"W
C39	21.27'	125.00'	9°44'53"	10.66'	21.24'	S79°04'25"W
C40	23.09'	125.00'	10°35'05"	11.58'	23.06'	S59°22'18"W
C41	26.88'	125.00'	12°13'48"	13.39'	26.63'	S47°57'51"W

- LEGEND**
- = SET PRM - 4"x4" CONCRETE MONUMENT (PSM 6602)
 - = FOUND 4"x4" CONCRETE MONUMENT (NO IDENTIFICATION)
 - ⊗ = SET PCP - NAIL & DISK (PSM 6602)
 - ELEV = ELEVATION
 - O.R. = OFFICIAL RECORDS BOOK
 - PCP = PERMANENT CONTROL POINT
 - PRM = PERMANENT REFERENCE MONUMENT
 - BSL = BUILDING SETBACK LINE
 - MIN. F.F. = MINIMUM FINISH FLOOR
 - PUE = PUBLIC UTILITIES EASEMENT
 - R/W = RIGHT OF WAY
 - S.F. = SQUARE FEET
 - ⊕ = BENCHMARK
 - (NAV88) = NORTH AMERICAN VERTICAL DATUM OF 1988
 - N 100.00' = STATE PLANE COORDINATES
 - E 100.00' = EASEMENT LINE



FLOWERS SURVEYING AND MAPPING INC.
 LICENSED BUSINESS No. 8395
 955 S.E. BIBLE CAMP STREET
 HIGH SPRINGS, FLORIDA 32643
 PHONE: (386) 462-0130
 EMAIL: FLOWERSSURVEYING@GMAIL.COM

STORMWATER / COMMON AREA 1
±4.21 ACRES

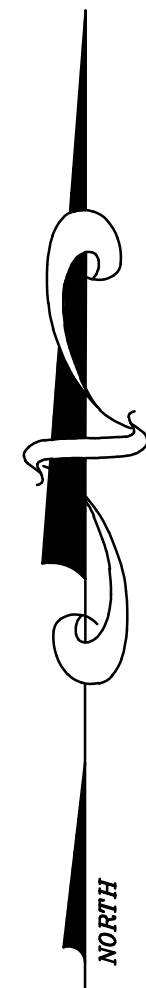
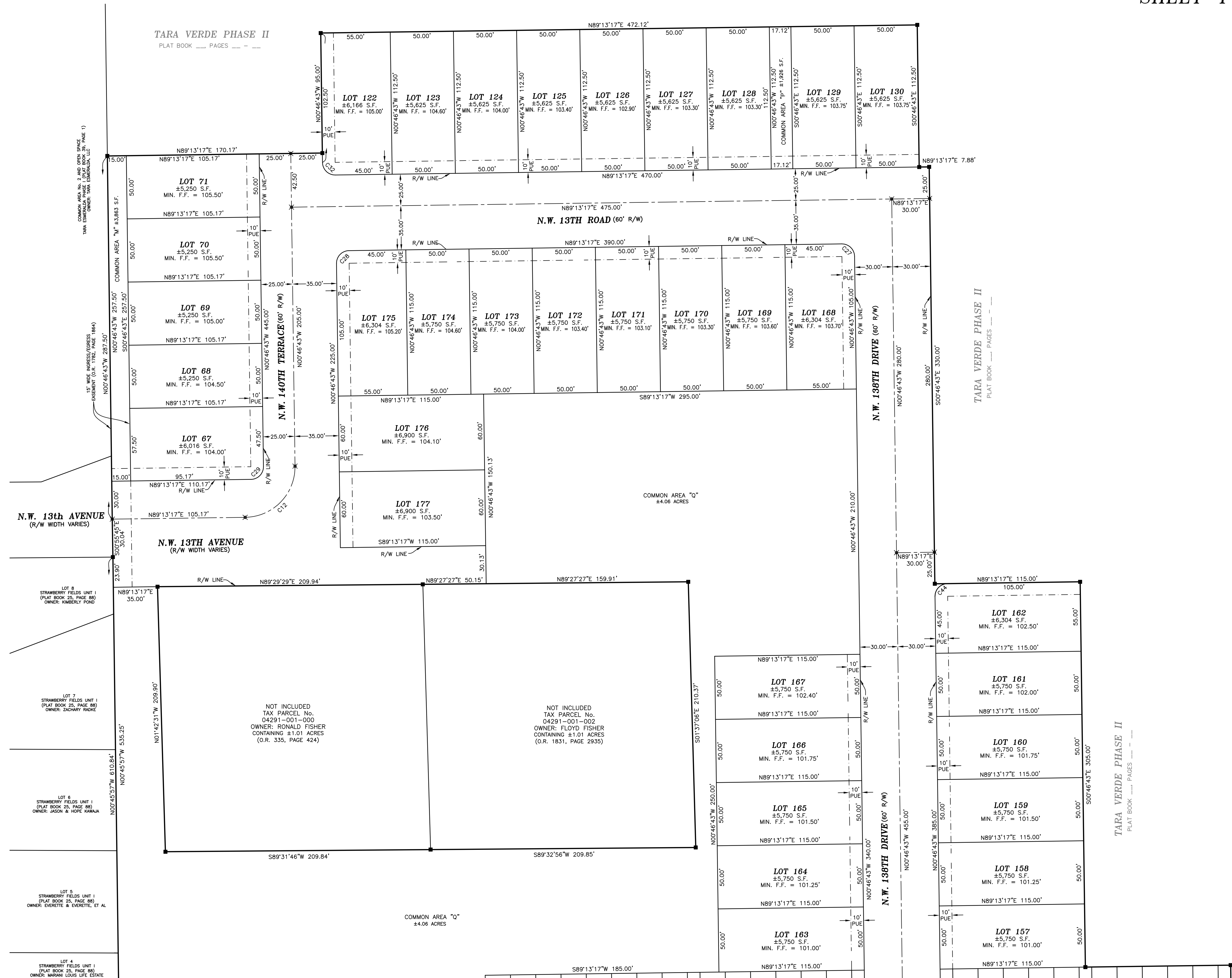
OPEN SPACE
±4.45 ACRES

TARA VERDE PHASE I

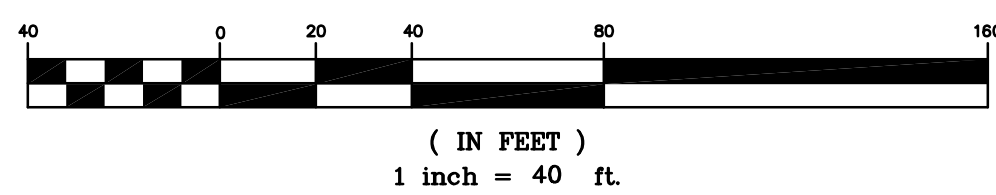
LYING IN FRACTIONAL SECTION 34, TOWNSHIP 9 SOUTH,
RANGE 18 EAST, ALACHUA COUNTY, FLORIDA

LEGEND

- = SET PRM - 4"x4" CONCRETE MONUMENT (PSM 6602)
- = FOUND 4"x4" CONCRETE MONUMENT (NO IDENTIFICATION)
- ✱ = SET PCP - NAIL & DISK (PSM 6602)
- ELEV = ELEVATION
- O.R. = OFFICIAL RECORDS BOOK
- PCP = PERMANENT CONTROL POINT
- PRM = PERMANENT REFERENCE MONUMENT
- BSL = BUILDING SETBACK LINE
- MIN. F.F. = MINIMUM FINISH FLOOR
- PUE = PUBLIC UTILITIES EASEMENT
- R/W = RIGHT OF WAY
- S.F. = SQUARE FEET
- ⊕ = BENCHMARK
- (NAVD88) = NORTH AMERICAN VERTICAL DATUM OF 1988
- N 100.00
E 100.00 = STATE PLANE COORDINATES
- - - = EASEMENT LINE



GRAPHIC SCALE



CURVE TABLE						
CURVE	LENGTH	RADIUS	DELTA	TANGENT	CHORD	CHORD BEARING
C12	62.83'	40.00'	90°00'00"	40.00'	56.57'	N44°13'17"E
C27	15.71'	10.00'	90°00'00"	10.00'	14.14'	N45°46'43"W
C28	15.71'	10.00'	90°00'00"	10.00'	14.14'	S44°13'17"W
C29	15.71'	10.00'	90°00'00"	10.00'	14.14'	N44°13'17"E
C32	15.71'	10.00'	90°00'00"	10.00'	14.14'	S45°46'43"E
C44	15.71'	10.00'	90°00'00"	10.00'	14.14'	S44°13'17"W



FLOWERS SURVEYING AND MAPPING INC.
LICENSED BUSINESS No. 8395
955 S.E. BIBLE CAMP STREET
HIGH SPRINGS, FLORIDA 32643
PHONE: (386) 462-0130
EMAIL: FLOWERSSURVEYING@GMAIL.COM