

TARA LARGA - PHASE 2

A SUBDIVISION

SITUATED IN

SECTION 12, TOWNSHIP 10 SOUTH, RANGE 18 EAST,

ALACHUA COUNTY, FLORIDA

NOTICE:
THIS PLAT, AS RECORDED IN ITS GRAPHIC FORM, IS THE OFFICIAL DEPICTION OF THE SUBDIVIDED LANDS DESCRIBED HEREIN AND WILL IN NO CIRCUMSTANCES BE SUPPLANTED IN AUTHORITY BY ANY OTHER GRAPHIC OR DIGITAL FORM OF THE PLAT. THERE MAY BE ADDITIONAL RESTRICTIONS THAT ARE NOT RECORDED ON THIS PLAT THAT MAY BE FOUND IN THE PUBLIC RECORDS OF THIS COUNTY.

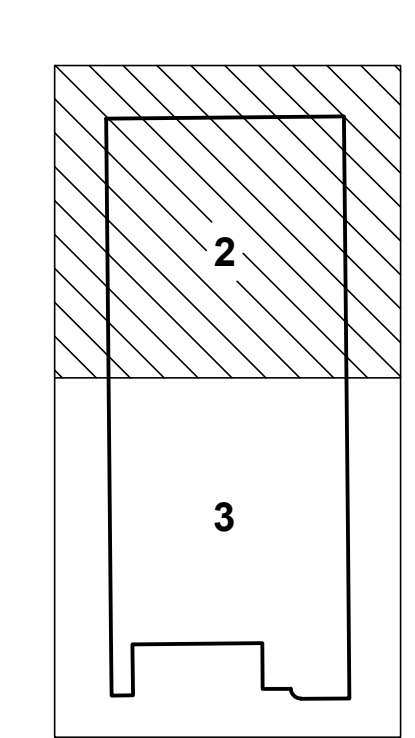
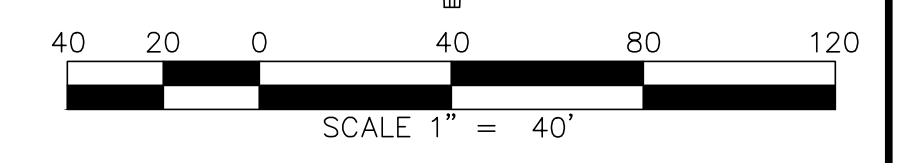
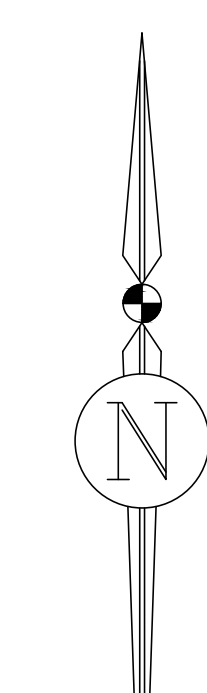
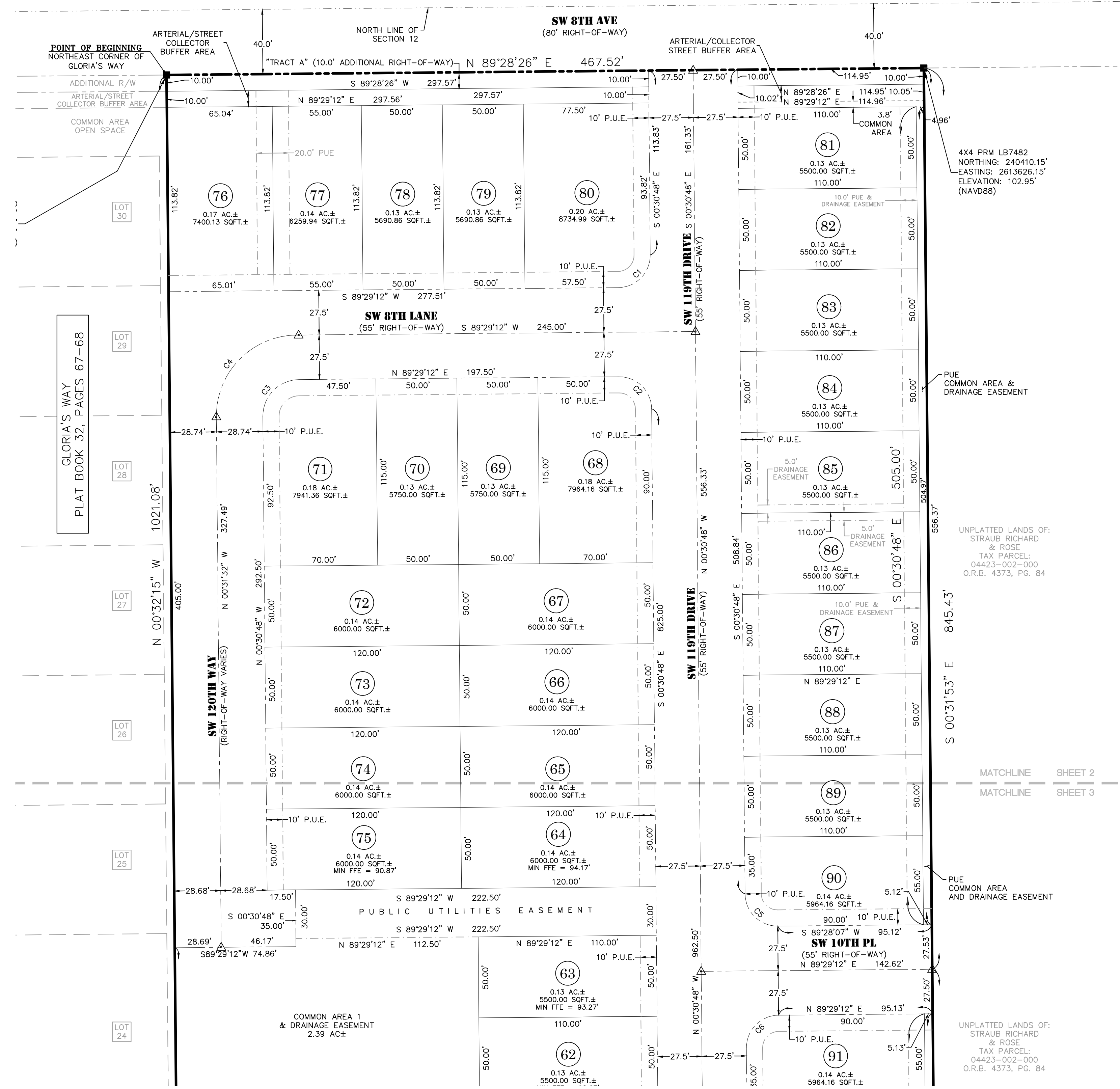
SYMBOL LEGEND

- BOUNDARY LINE (PLAT)
- BOUNDARY LINE (LOT)
- - - RIGHT-OF-WAY LINE
- - - SECTION LINE
- - - EASEMENT LINE
- - - CL RIGHT-OF-WAY LINE
- 5/8" REBAR & CAP (JBPRO LB 8031) UNLESS OTHERWISE NOTED
- 5/8" REBAR & CAP (JBPRO PRM/PCP LB 8031)
- 4"x4" CONCRETE MONUMENT
- △ NAIL & DISK (JBPRO LB8031 PRM/PCP)

ABBREVIATIONS

- Δ = DELTA
- AC = ACRES
- CH = CHORD BEARING
- CHL = CHORD LENGTH
- ID = IDENTIFICATION
- JBPRO = J-BROWN PROFESSIONAL GROUP
- L = ARC LENGTH
- O.R.B. = OFFICIAL RECORDS BOOK
- PRM = PERMANENT REFERENCE MONUMENT
- PG. = PAGE
- P.U.E. = PUBLIC UTILITY EASEMENT
- R = RADIUS
- SQ. FT. = SQUARE FEET
- MIN = MINIMUM
- FFE = FINISHED FLOOR ELEVATION

Curve Table						
Curve#	Length	Radius	Delta	Tangent	Chord Bearing	Chord Distance
C1	31.42'	20.00'	90°00'00"	20.00'	N44°29'12"E	28.28'
C2	31.42'	20.00'	90°00'00"	20.00'	N45°30'48"W	28.28'
C3	35.34'	22.50'	90°00'00"	22.50'	S44°29'12"W	31.82'
C4	79.81'	50.00'	91°27'12"	51.28'	S45°10'54"W	71.60'
C5	31.42'	20.00'	90°00'00"	20.00'	S45°30'48"E	28.28'
C6	31.42'	20.00'	90°00'00"	20.00'	S44°29'12"W	28.28'



SHEET KEY

JBPro
CIVIL ENGINEERING | LAND PLANNING
SURVEYING | CONSTRUCTION SERVICES

3530 NW 43rd Street | Gainesville, FL
4420 US-1 S, Suite 1 | St. Augustine, FL
1826 Ox Bottom Lane | Tallahassee, FL
Toll Free: (844) Go-JBPro

TARA LARGA - PHASE 2

A SUBDIVISION

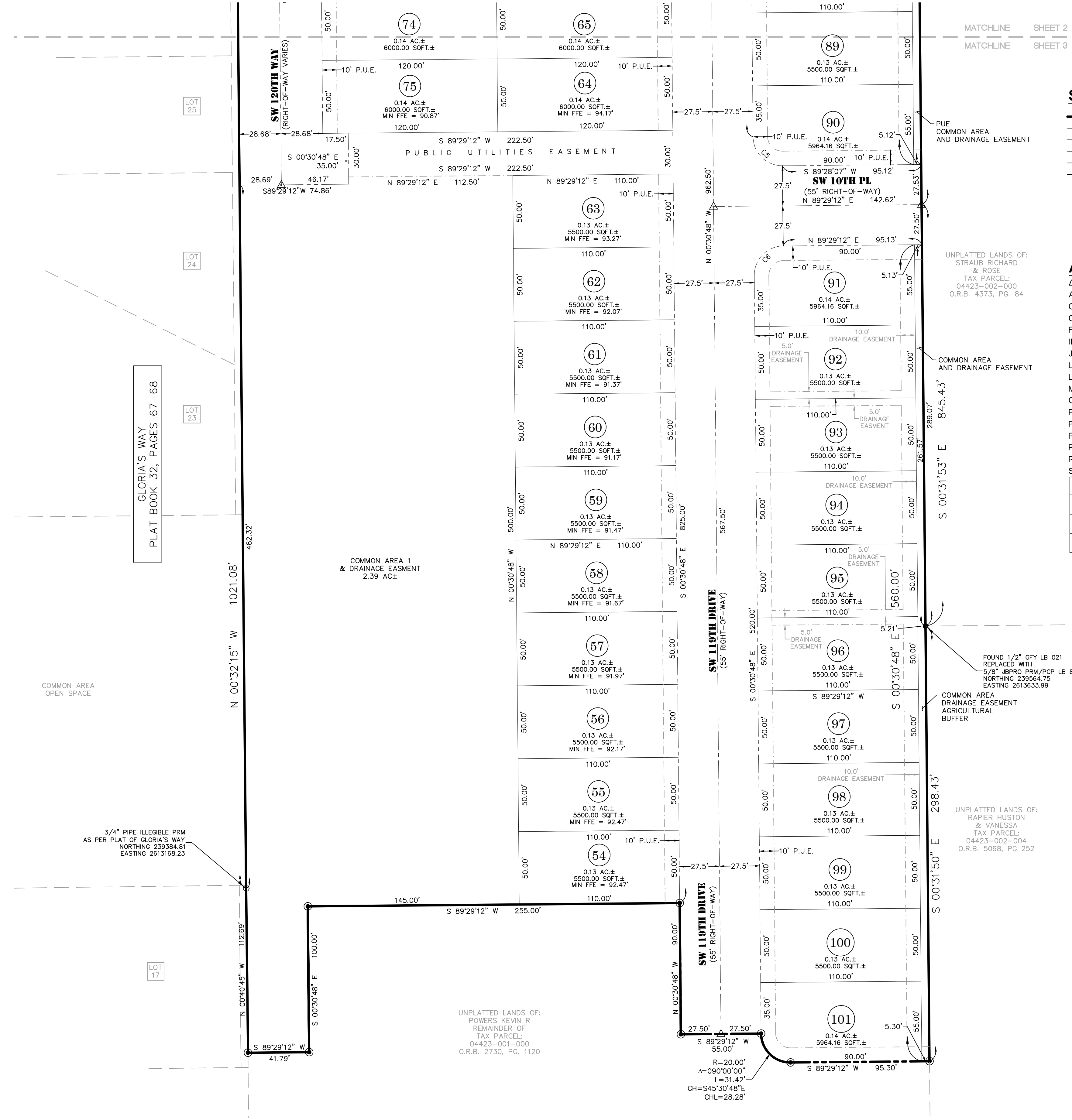
SITUATED IN

SECTION 12, TOWNSHIP 10 SOUTH, RANGE 18 EAST,

ALACHUA COUNTY, FLORIDA

NOTICE:
THIS PLAT, AS RECORDED IN ITS GRAPHIC FORM, IS THE OFFICIAL DEPICTION OF THE SUBDIVIDED LANDS DESCRIBED HEREIN AND WILL IN NO CIRCUMSTANCES BE SUPPLANTED IN AUTHORITY BY ANY OTHER GRAPHIC OR DIGITAL FORM OF THE PLAT. THERE MAY BE ADDITIONAL RESTRICTIONS THAT ARE NOT RECORDED ON THIS PLAT THAT MAY BE FOUND IN THE PUBLIC RECORDS OF THIS COUNTY.

Plat Book ____, Page ____
Sheet Three of Three



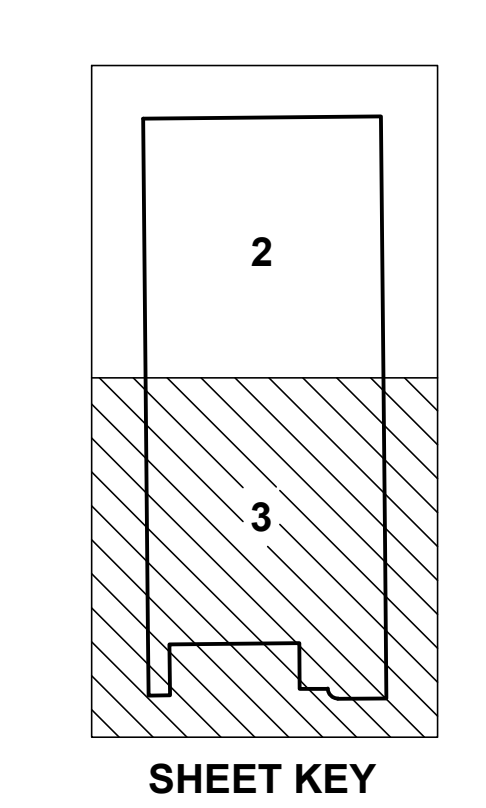
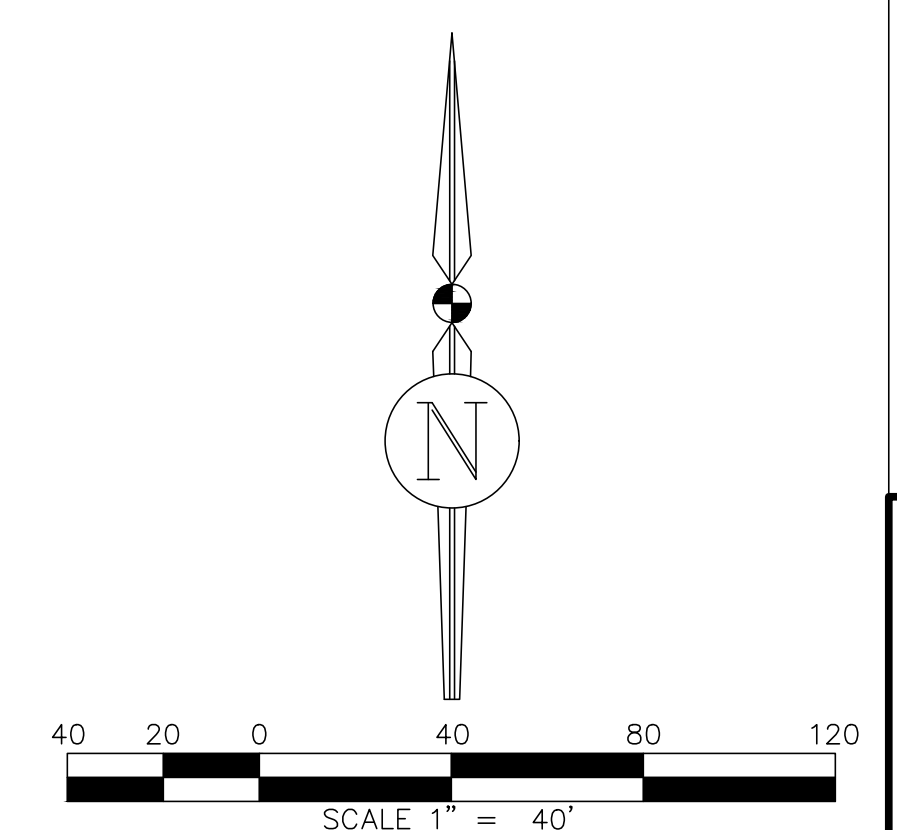
SYMBOL LEGEND

- BOUNDARY LINE (PLAT)
- BOUNDARY LINE (LOT)
- - - RIGHT-OF-WAY LINE
- - - SECTION LINE
- - - EASEMENT LINE
- - - CL RIGHT-OF-WAY LINE
- 5/8" REBAR & CAP (JBPRO LB 8031) UNLESS OTHERWISE NOTED
- ⊙ 5/8" REBAR & CAP (JBPRO PRM/PCP LB 8031)
- 4"x4" CONCRETE MONUMENT
- ▲ NAIL & DISK (JBPRO LB8031 PRM/PCP)
- △ 5/8" REBAR & CAP PRM/PCP

ABBREVIATIONS

- Δ = DELTA
- AC = ACRES
- CH = CHORD BEARING
- CHL = CHORD LENGTH
- FFE = FINISHED FLOOR ELEVATION
- ID = IDENTIFICATION
- JBPRO = JBROWN PROFESSIONAL GROUP
- L = ARC LENGTH
- LB = LICENSED BUSINESS
- MIN = MINIMUM
- O.R.B. = OFFICIAL RECORDS BOOK
- PCP = PERMANENT CONTROL POINT
- PG. = PAGE
- PRM = PERMANENT REFERENCE MONUMENT
- P.U.E. = PUBLIC UTILITY EASEMENT
- R = RADIUS
- SQFT. = SQUARE FEET

Curve Table						
Curve#	Length	Radius	Delta	Tangent	Chord Bearing	Chord Distance
C5	31.42'	20.00'	90°00'00"	20.00'	S45°30'48"E	28.28'
C6	31.42'	20.00'	90°00'00"	20.00'	S44°29'12"W	28.28'



JBPro
CIVIL ENGINEERING | LAND PLANNING
SURVEYING | CONSTRUCTION SERVICES
3530 NW 43rd Street | Gainesville, FL
4420 US-1 S, Suite 1 | St. Augustine, FL
1826 Ox Bottom Lane | Tallahassee, FL
Toll Free: (844) Go-JBPro