



# Plat Vacation

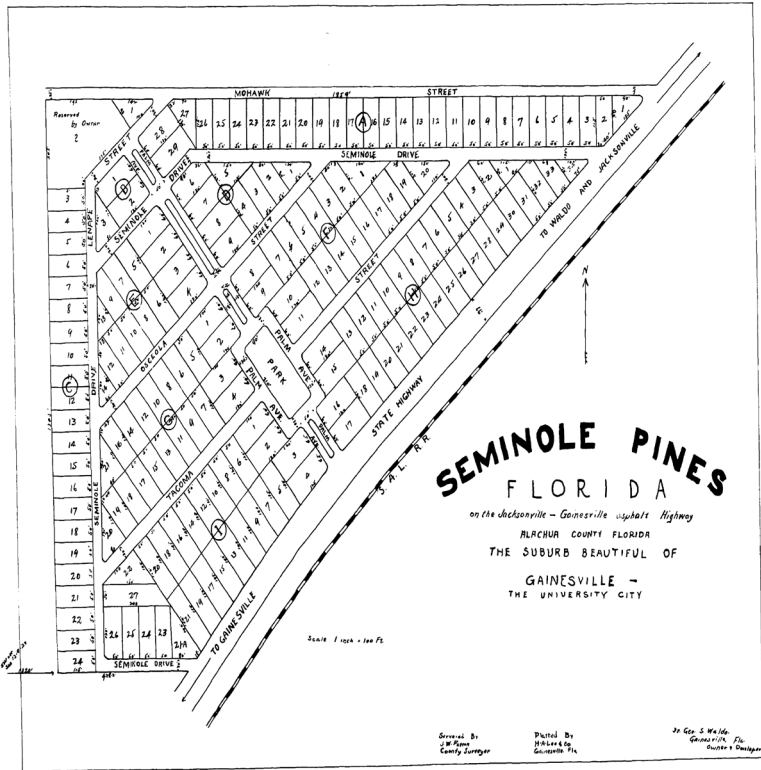
## Seminole Pines

May 28, 2024

Aachua County Public Works  
Ramon D. Gavarrete, P.E.

# Plat Book "A", Page 179

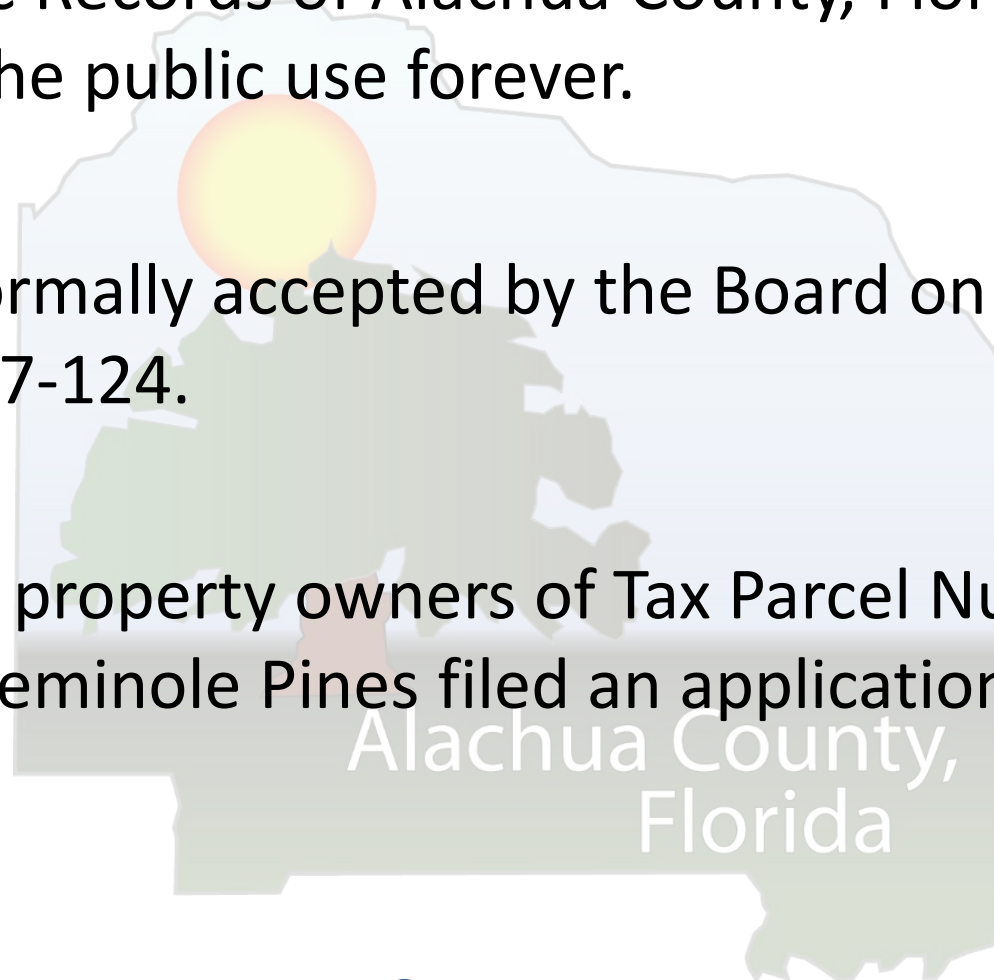
A-179



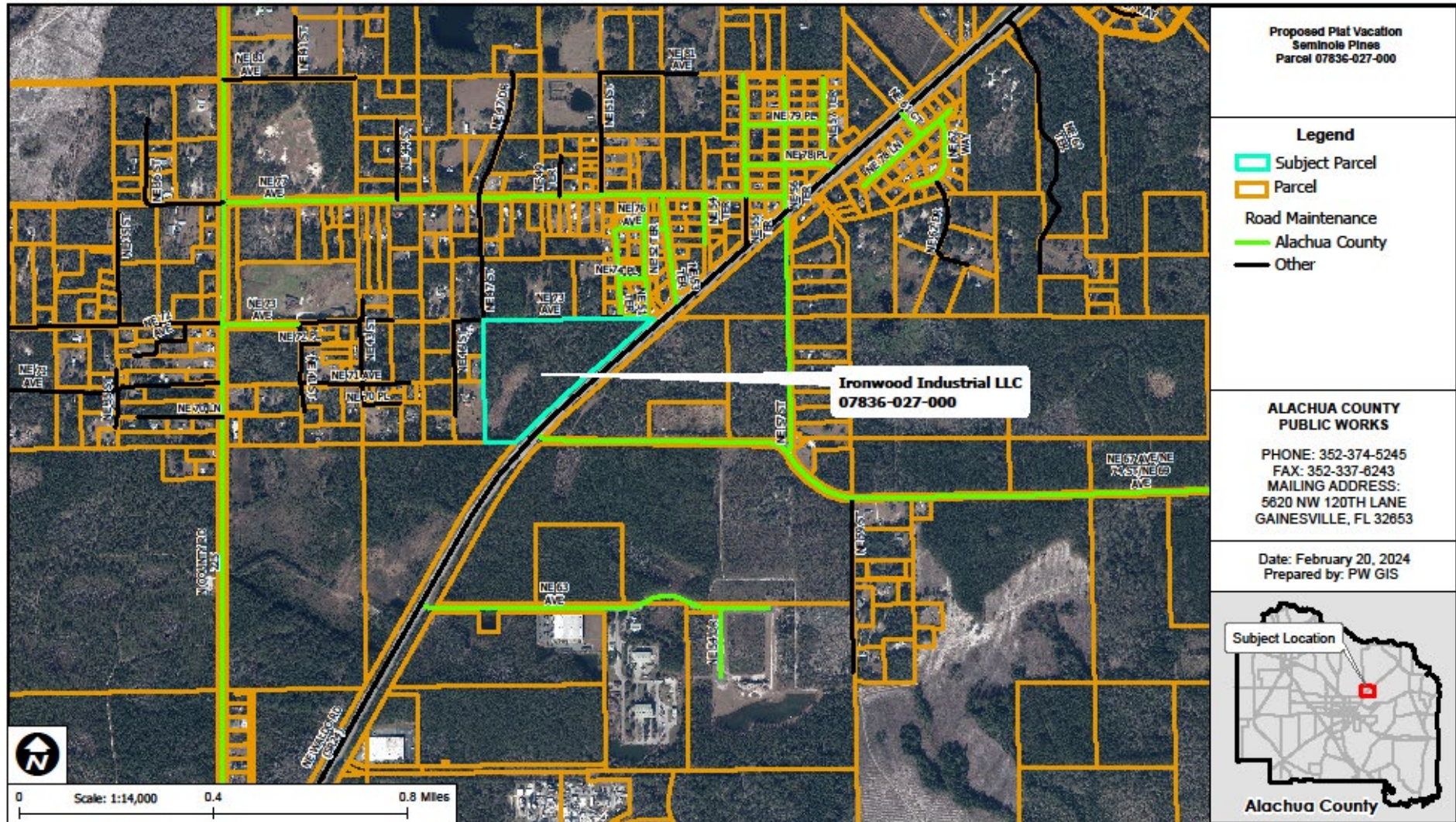
Sold July 20, 1915  
Revised Plat Book 1915  
By C. S. Brown & Co.

# History

- The plat of Seminole Pines was recorded July 24, 1925, Plat Book A, Page 179 of the Public Records of Alachua County, Florida with the streets dedicated to the public use forever.
- The dedication was formally accepted by the Board on October 24, 2017, by Resolution 17-124.
- January 25, 2024, the property owners of Tax Parcel Number 07836-027-000, the plat of Seminole Pines filed an application to vacate the plat.



# Map of Seminole Pines Plat Vacation



## Section 177.101 (3), Fla. Stat.,

The governing bodies of the counties of the state may adopt resolutions vacating plats in whole or in part of subdivisions in said counties, returning the property covered by such plats either in whole or in part into acreage. Before such resolution of vacating any plat either in whole or in part shall be entered by the governing body of a county, it must be shown that the persons making application for said vacation own the fee simple title to the whole or that part of the tract covered by the plat sought to be vacated, and it must be further shown that the vacation by the governing body of the county will not affect the ownership or right of convenient access of persons owning other parts of the subdivision.

# Section 402.64(a) of Alachua County Code,

- **Action by Board of County Commissioners Approval of Vacation of Plat**

If the Board determines at a Public Hearing that vacating the plat will not affect the ownership or right of convenient access of persons owning other parts of the subdivision or adjacent properties, it may adopt the appropriate resolution vacating all or a portion of the plat.



Alachua County,  
Florida

# Recommended Motion

Move to adopt the Resolution to vacate the plat as requested in the application for the Vacation of the Plat of Seminole Pines.

