

# **ALACHUA COUNTY FOREVER WILD SPACES AND PUBLIC PLACES**

## **10-Year Surtax Funded Plan Summary (2023-2032)**

Andi Christman  
Land Conservation and Management Program

# WSPP COUNTY SURTAX PROGRAMS

## 2023-2032 BIG PICTURE

- Projected total 10-Year County\* WSPP surtax funds = **\$194M\*\***
  - \$6M off the top to Municipalities for joint WSPP projects with County
  - 80% Conservation Lands/20% Active Parks County Funding Allocation

### Conservation Lands 10-Year Plan

- Conservation Land Acquisition
  - ACF Conservation Lands
  - Agriculture Protection Program
- Preserve Infrastructure Development
- Preserve Operation & Maintenance

### Parks and Open Space Master Plan

- Active Park Improvements
- New Active Park Acquisition
- Active Park Operation & Maintenance

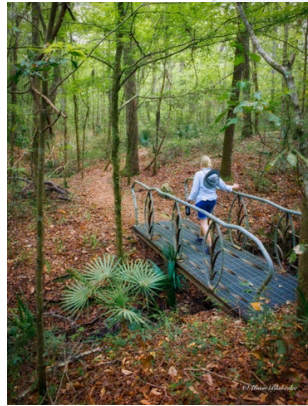
\* After initial State dispersal to municipalities and County.

\*\* Estimate provided by OMB, projections using FL Dept of Revenue estimates with 4% growth annually.

# COLLABORATIVE MISSIONS UNITED IN CITIZEN SERVICE

## Environmental Protection Department

- Alachua County Forever Land Acquisition Program
- County Nature Preserves



## Parks and Open Space Department

- County Active Parks



# THE ALACHUA COUNTY FOREVER MISSION

*The mission of ACF is to acquire, improve, and manage environmentally significant lands that protect water resources, wildlife habitats and natural areas suitable for resource-based recreation.*

Alachua County,  
Florida

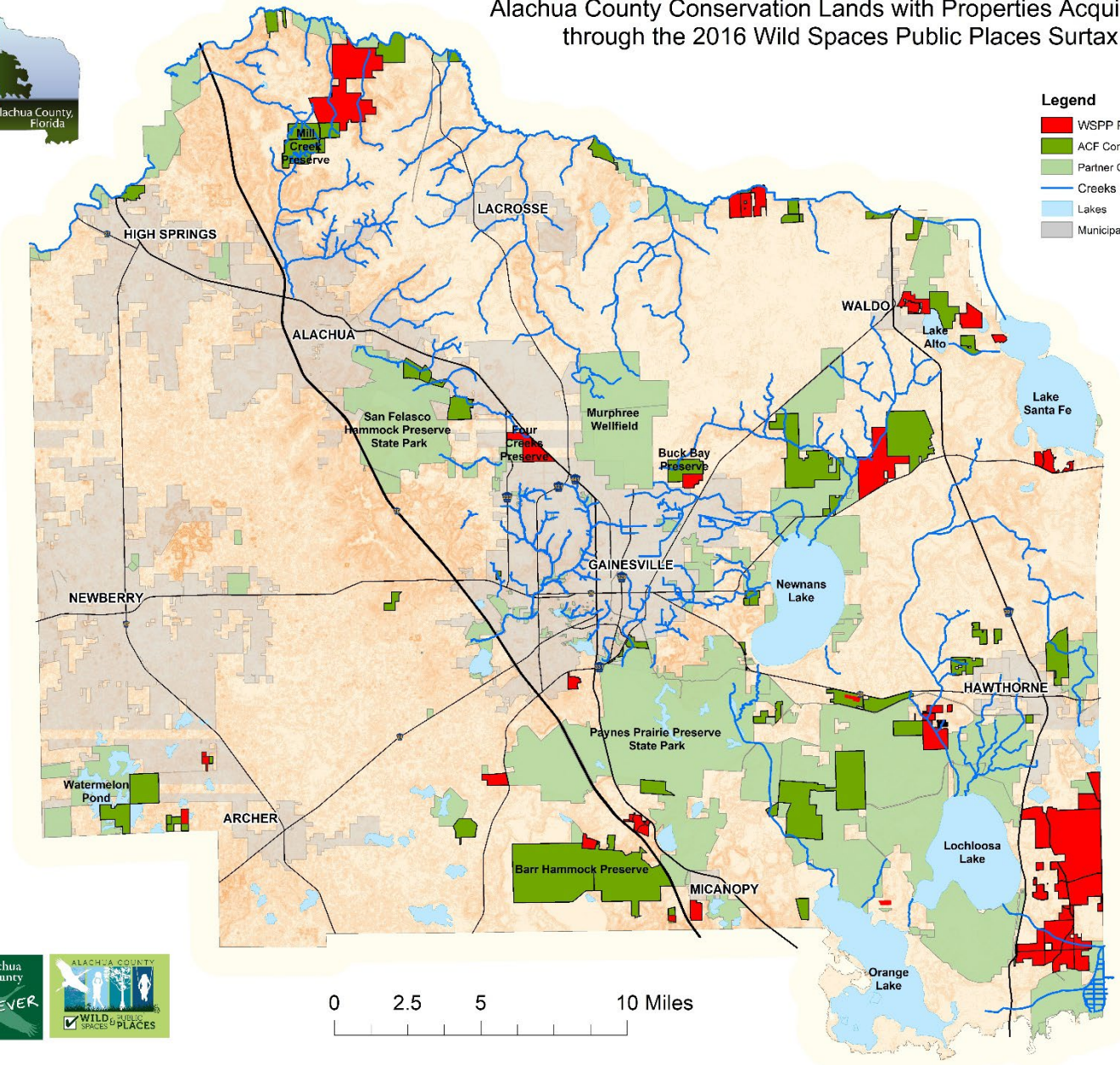


# CONSERVATION SUCCESSES

Total Acres  
acquired to date  
= 33,037



Alachua County Conservation Lands with Properties Acquired in FY 2022 through the 2016 Wild Spaces Public Places Surtax Funding





# WILD SPACES PUBLIC PLACES 2016-2022: ACQUISITION SUMMARY



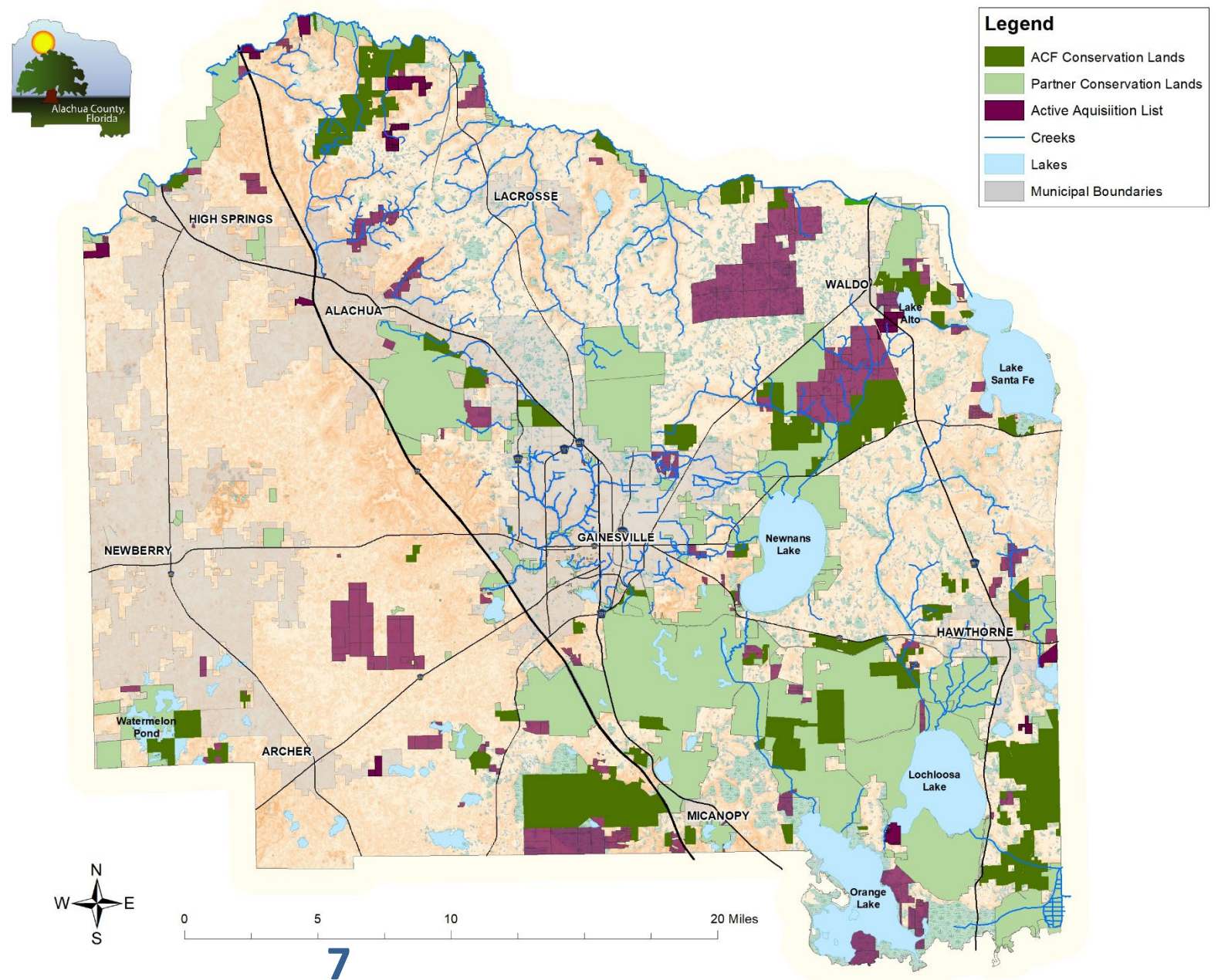
	# of Properties	Acreage	Land Cost
<b>WSPP Acquisitions, 2016 to 2022</b>	<b>27</b>	<b>13,168.61</b>	<b>\$39,788,124</b>
<b>Acquired Lands Due Diligence</b>			<b>\$1,745,695</b>
<b>In Progress Lands Due Diligence</b>			<b>\$301,603</b>
<b>TOTAL SPENT 2016-2022</b>			<b>\$41,835,423</b>

**Average Acquisition Cost = \$3,177 per acre\***

*\* Includes Fee Simple, Conservation Easements, and Donations.*

# ACTIVE ACQUISITION LIST

Currently = 40,380 acres



# CORRIDOR-BASED STRATEGY

## Santa Fe River Corridor

- Santa Fe River
- Hornsby Springshed

## Florida Wildlife Corridor

- Lakes Santa Fe and Alto
- Austin Cary Flatwoods
- Lochloosa Creek & Slough

## Southern Corridor

- Barr Hammock
- Watermelon Pond

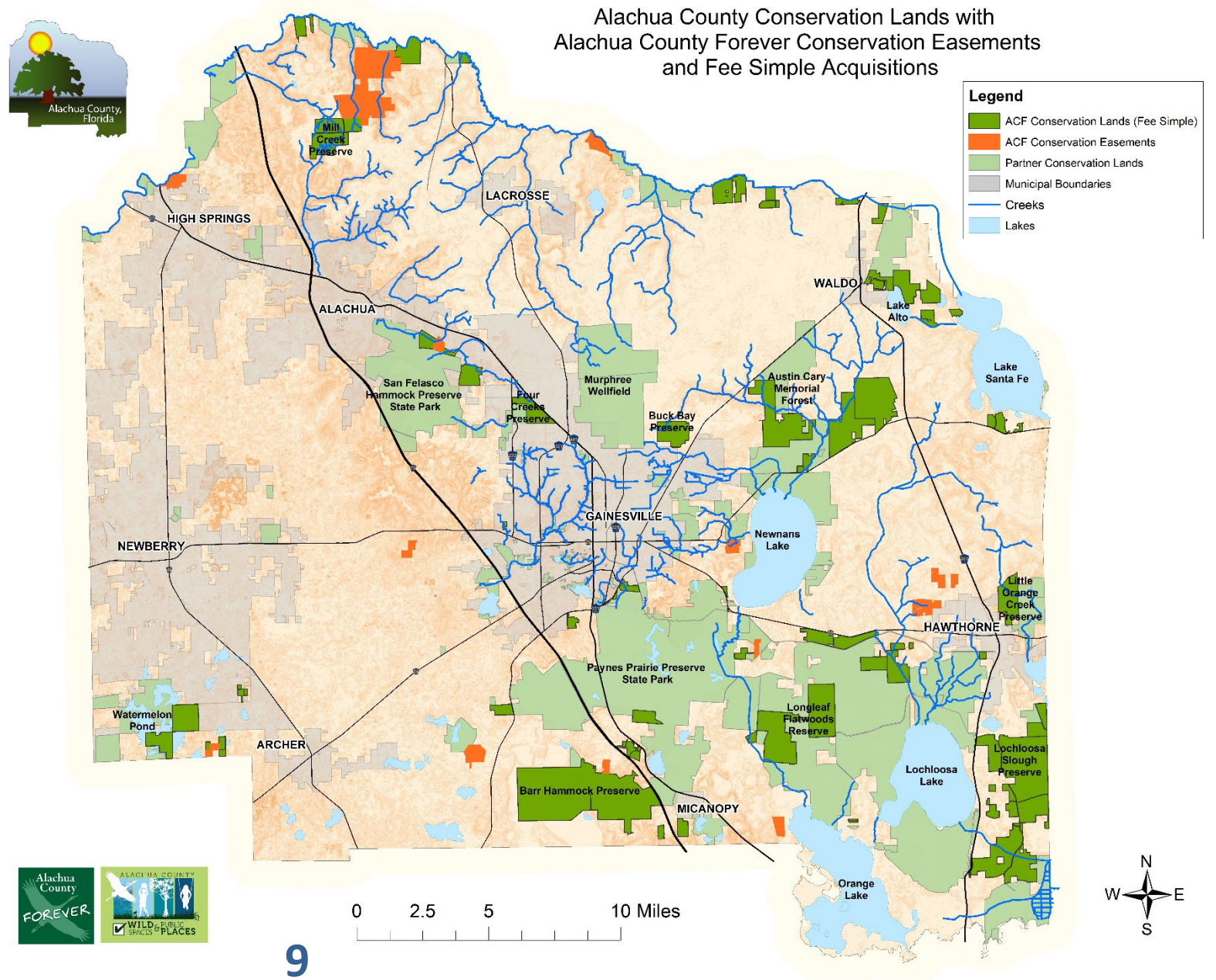
## Agriculture Protection Program

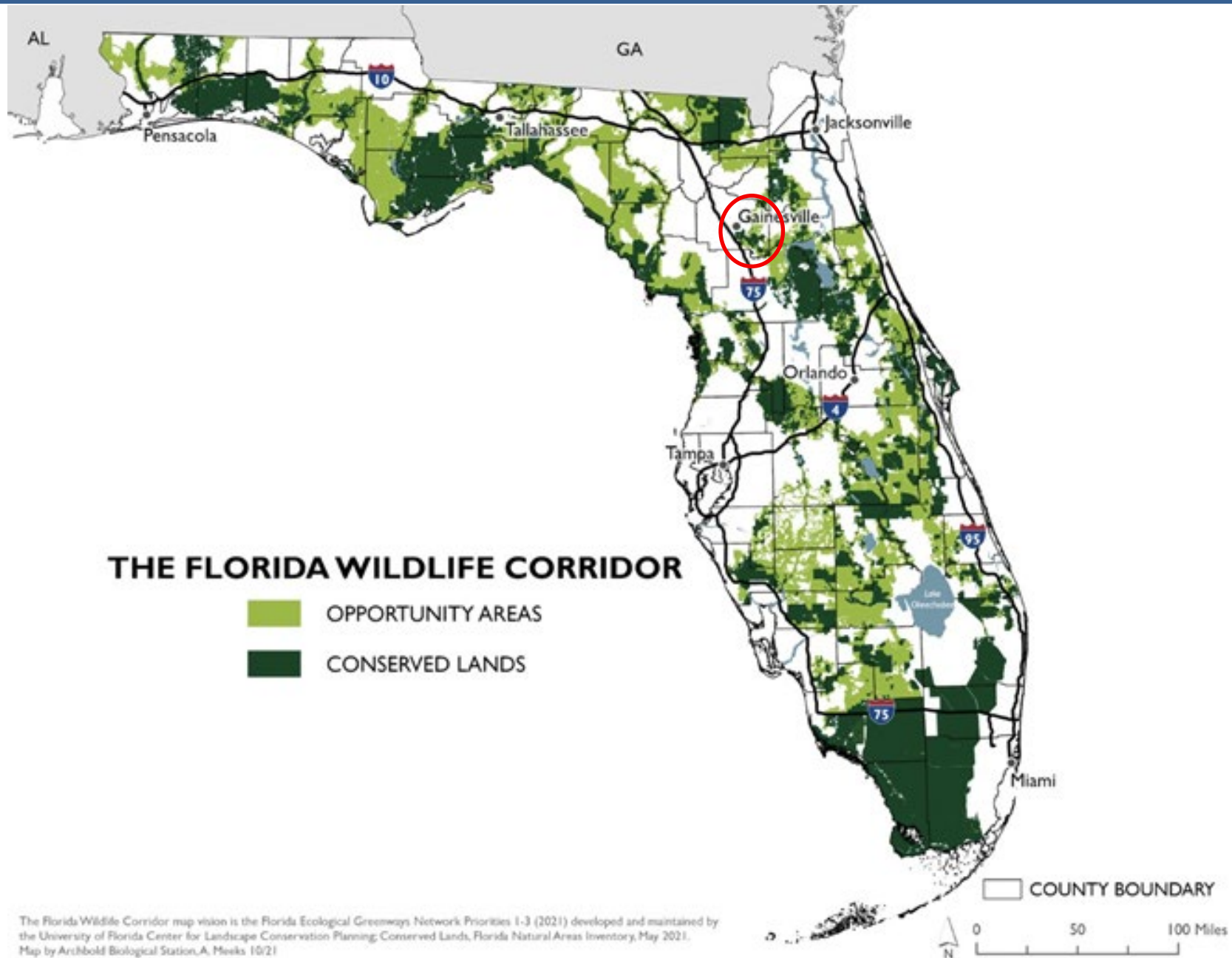
- Strengthening all Corridors
- Water Quality & Recharge
- Local Food Production





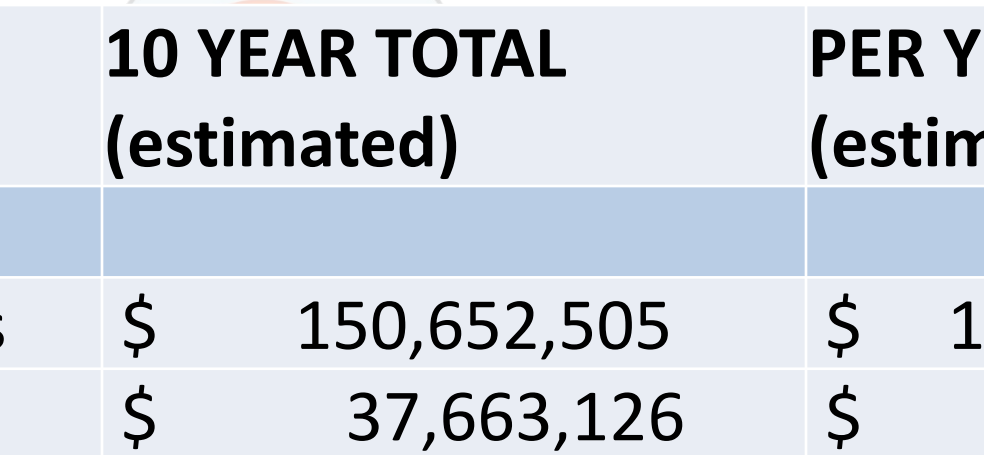
# 15 County-held Conservation Easements Currently in Place





The Florida Wildlife Corridor map vision is the Florida Ecological Greenways Network Priorities 1-3 (2021) developed and maintained by the University of Florida Center for Landscape Conservation Planning: Conserved Lands, Florida Natural Areas Inventory, May 2021. Map by Archbold Biological Station, A. Peeks 10/21

# WSPP SURTAX PERCENTAGE SPLITS\*



	10 YEAR TOTAL (estimated)	PER YEAR (estimated)
<b>80%/20% Split</b>		
Conservation Lands	\$ 150,652,505	\$ 15,065,250
Parks	\$ 37,663,126	\$ 3,766,313

*\*Estimates provided by OMB, projections using FL Dept of Revenue estimates with 4% growth annually. Splits established by the BOCC at special policy meeting on 2/7/2023.*