

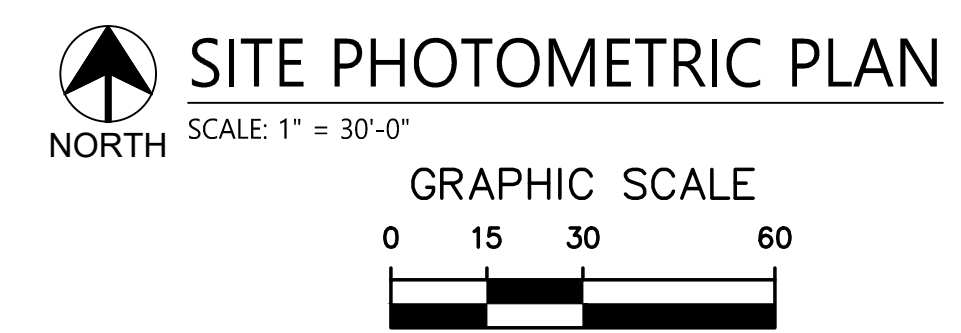
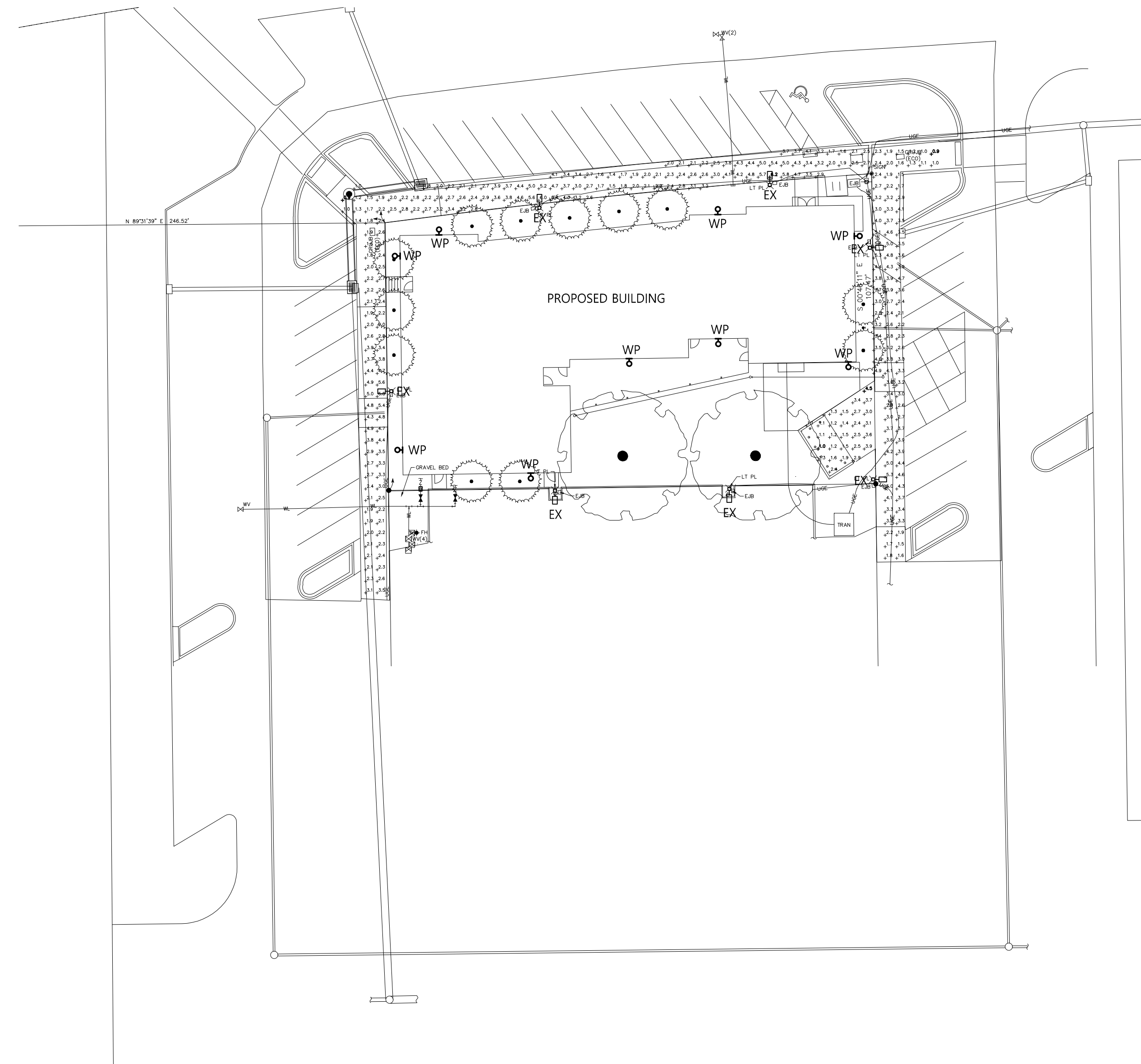
### GENERAL NOTES

- HIGHLIGHTED POINTS REPRESENT MAXIMUM/MINIMUM VALUE FOR EACH AREA.
- FIXTURES WILL BE CONTROLLED WITH PHOTOCELL AND OPERATE DUSK-TO-DAWN.
- POLES SHALL BE LOCATED MINIMUM 24" BEHIND CURB AND SHALL BE PROVIDED WITH CONCRETE POLE BASE.
- THIS DRAWING IS NOT INTENDED TO CONSTITUTE A CONSTRUCTION DOCUMENT AND SHALL BE USED FOR PERMITTING PURPOSES ONLY.

Photometric Statistics						
Description	Symbol	Avg	Max	Min	Max/Min	Avg/Min
EXISTING DUMPSTER ENCLOSURE	+	2.2 fc	4.5 fc	1.0 fc	4.5:1	2.2:1
BUILDING WALKWAY	+	3.0 fc	6.2 fc	0.9 fc	6.9:1	3.3:1

Fixture Schedule For Photometrics										
Symbol	Label	QTY	Manufacturer	Catalog Number	Description	Lamp	Filename	Lumens per Lamp	LLF	Mounting Height
⊕	WP	9	SIGNIFY GARDCO	111L-16L-550-NW-G2-3	111 Mini Sconce LED	LEDGINE 3 IP20 WITH 16 CREE XPG2 LEDS	111-16l-550-nw-g2-3.ies	2735	0.81	12FT

NOTE: FIXTURES MARKED 'EX' ARE EXISTING TO REMAIN AND SHOWN FOR REFERENCE ONLY.



HUNTER DESIGN AND CONSULTING, INC.  
 696 1ST AVE N, STE 200  
 ST. PETERSBURG, FL 33701  
 352-238-6366  
 FLORIDA CA #31946, PE #76961

O2B KIDS OFFICES NEWBERRY PARK  
 SITE LIGHTING PLAN  
 ALACHUA COUNTY, FLORIDA

PROJECT INFORMATION
PROJECT NUMBER: 24028
DRAFTED: K. NORTH CUTT
DESIGNED: K. NORTH CUTT
REVIEWED: K. HUNTER
ISSUE DATE: 3/4/24
REVISIONS

SHEET NUMBER

E-1