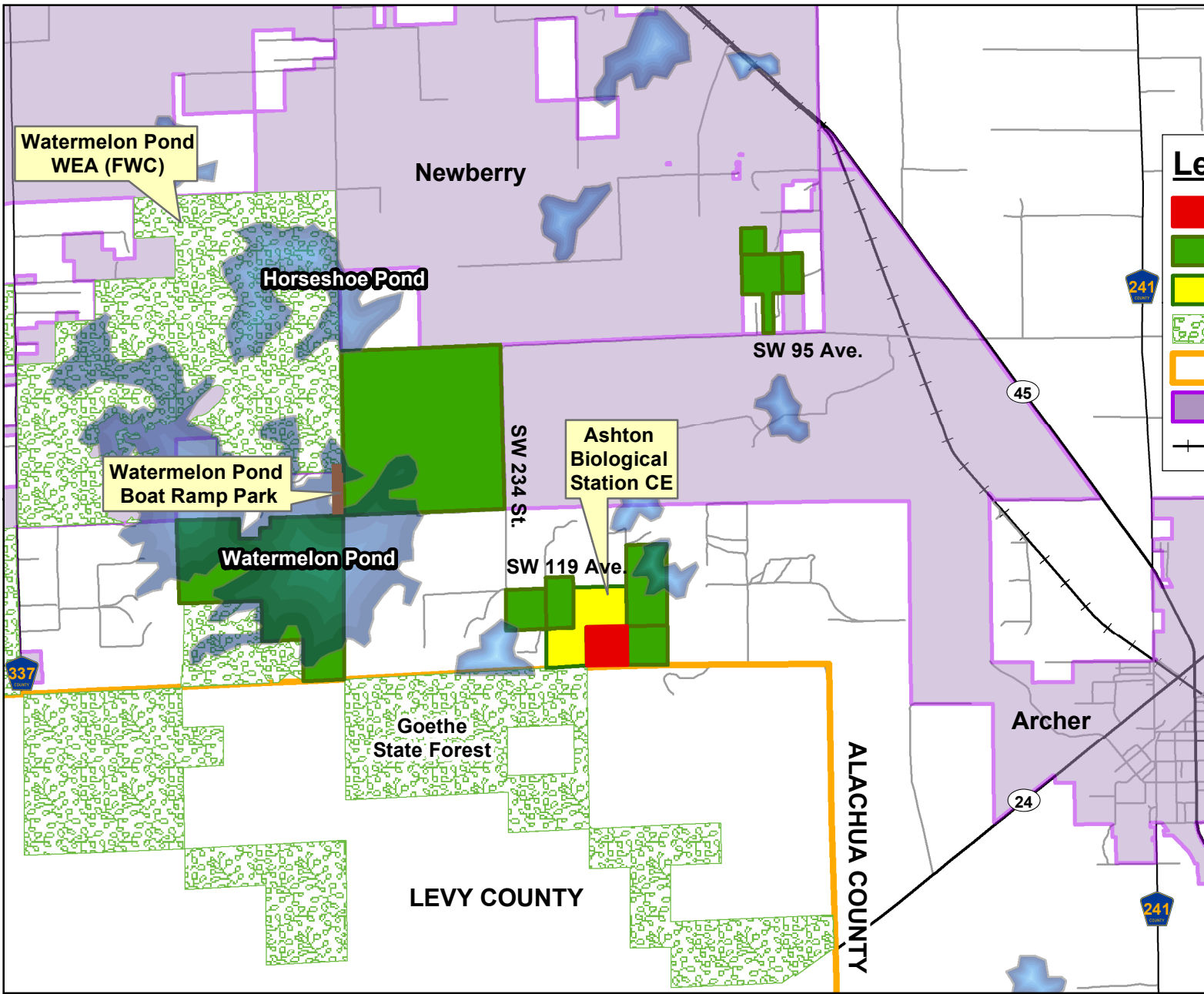
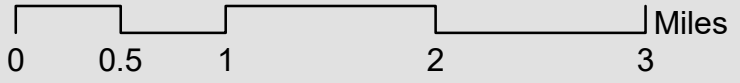
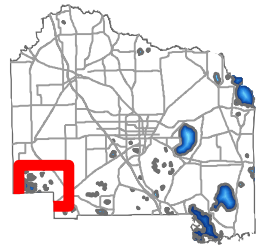


Watermelon Pond - Elliott Location Map



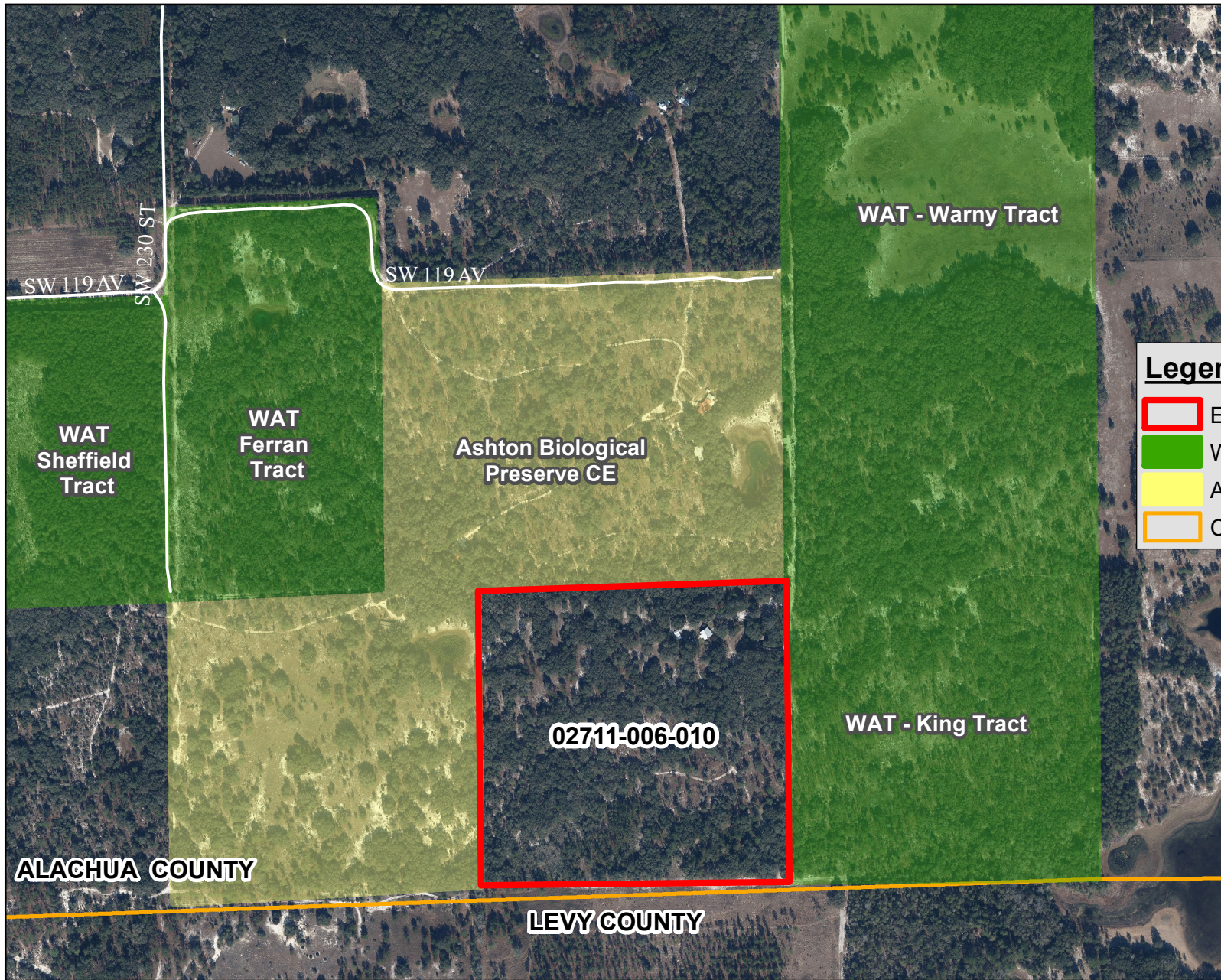
Legend

- Elliott Parcel (40 ac)
- Watermelon Pond Preserve
- Conservation Easement
- Conservation Lands
- County Boundary
- Municipal Boundaries
- +++ Railroad



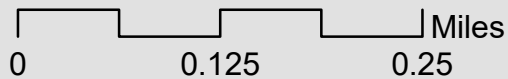
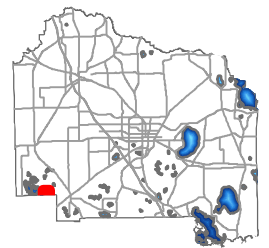
DISCLAIMER: This map and the spatial data it contains are made available as a public service, to be used for reference purposes only. The Alachua County Environmental Protection Department provides this information AS IS without warranty of any kind. The quality of the data is dependent on the various sources from which each data layer is obtained.

Watermelon Pond - Elliott Parcel Map



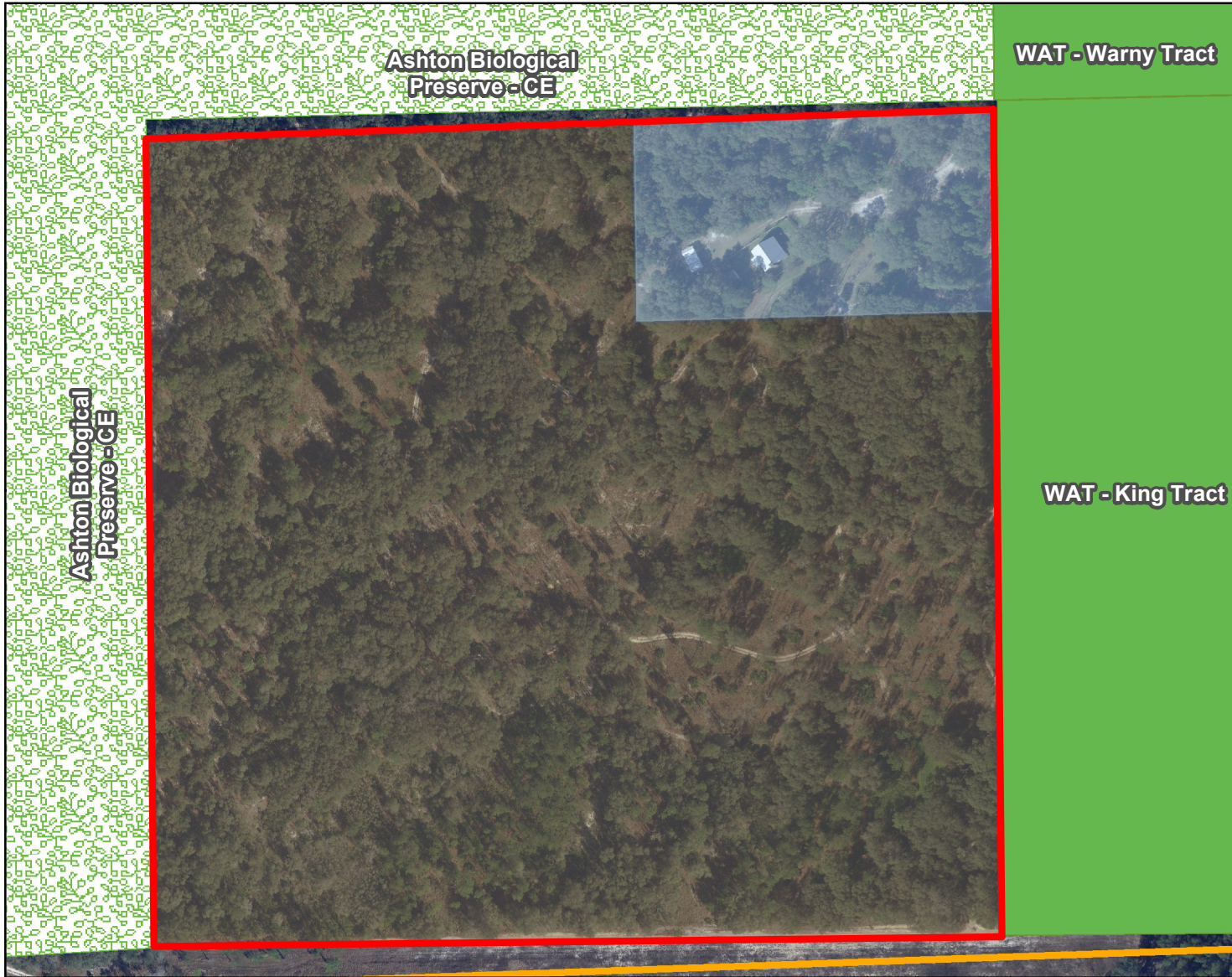
Legend

- Elliott Parcel (40 ac.)
- Watermelon Pond Preserve
- ACF Conservation Easement
- County Boundary









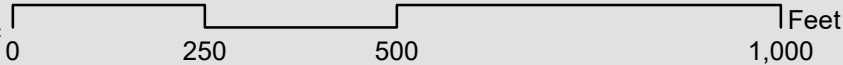
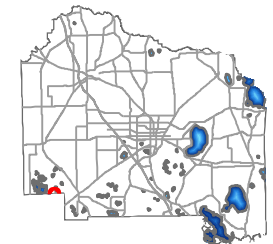
DISCLAIMER: This map and the spatial data it contains are made available as a public service, to be used for reference purposes only. The Alachua County Environmental Protection Department provides this information AS IS without warranty of any kind. The quality of the data is dependent on the various sources from which each data layer is obtained.

Watermelon Pond - Elliott Conservation Easement Zone Map



Legend

-  Elliott Parcel (40 ac.)
-  Building Envelope (4 ac.)
-  Preservation Zone (36 ac.)
-  ACF Preserve
-  ACF Conservation Easement
-  County Boundary



DISCLAIMER: This map and the spatial data it contains are made available as a public service, to be used for reference purposes only. The Alachua County Environmental Protection Department provides this information AS IS without warranty of any kind. The quality of the data is dependent on the various sources from which each data layer is obtained.