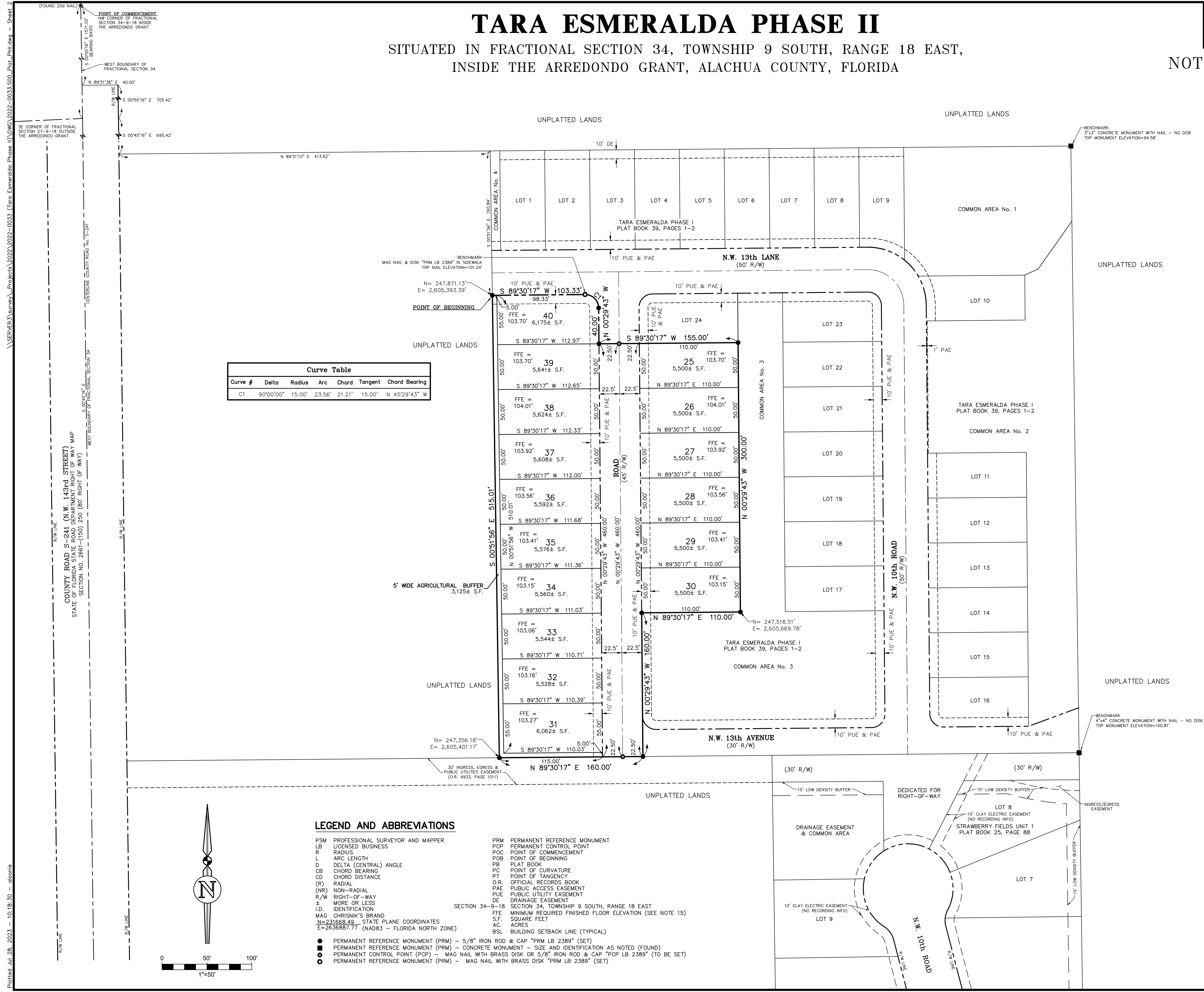


TARA ESMERALDA PHASE II

SITUATED IN FRACTIONAL SECTION 34, TOWNSHIP 9 SOUTH, RANGE 18 EAST,
INSIDE THE ARREDONDO GRANT, ALACHUA COUNTY, FLORIDA

PLAT BOOK _____, PAGE _____
SHEET 2 OF 2

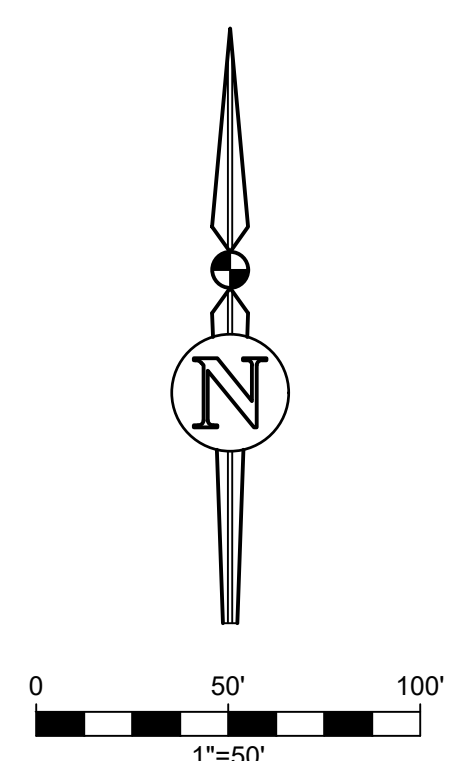
NOT FOR FINAL RECORDING



Curve Table						
Curve #	Delta	Radius	Arc	Chord	Tangent	Chord Bearing
C1	90°00'00"	15.00'	23.56'	21.21'	15.00'	N 45°29'43" W

LEGEND AND ABBREVIATIONS

- | | |
|---|--|
| PSM PROFESSIONAL SURVEYOR AND MAPPER | PRM PERMANENT REFERENCE MONUMENT |
| LB LICENSED BUSINESS | PCP PERMANENT CONTROL POINT |
| R RADIUS | POC POINT OF COMMENCEMENT |
| L ARC LENGTH | POB POINT OF BEGINNING |
| D DELTA (CENTRAL) ANGLE | PB PLAT BOOK |
| CB CHORD BEARING | PC POINT OF CURVATURE |
| CD CHORD DISTANCE | PT POINT OF TANGENCY |
| (R) RADIAL | O.R. OFFICIAL RECORDS BOOK |
| (NR) NON-RADIAL | PAE PUBLIC ACCESS EASEMENT |
| R/W RIGHT-OF-WAY | PUE PUBLIC UTILITY EASEMENT |
| ± MORE OR LESS | DE DRAINAGE EASEMENT |
| I.D. IDENTIFICATION | DE MINIMUM REQUIRED FINISHED FLOOR ELEVATION (SEE NOTE 15) |
| N=231668.49 STATE PLANE COORDINATES | S.F. SQUARE FEET |
| E=2636887.77 (NAD83 - FLORIDA NORTH ZONE) | AC ACRES |
| | BSL BUILDING SETBACK LINE (TYPICAL) |
-
- PERMANENT REFERENCE MONUMENT (PRM) - 5/8" IRON ROD & CAP "PRM LB 2389" (SET)
 - PERMANENT REFERENCE MONUMENT (PRM) - CONCRETE MONUMENT - SIZE AND IDENTIFICATION AS NOTED (FOUND)
 - PERMANENT CONTROL POINT (PCP) - MAG NAIL WITH BRASS DISK OR 5/8" IRON ROD & CAP "PCP LB 2389" (TO BE SET)
 - PERMANENT REFERENCE MONUMENT (PRM) - MAG NAIL WITH BRASS DISK "PRM LB 2389" (SET)



Plotted Jul 26, 2023 - 10:18:30 - ebonie
 \\SERVERS\survey\Projects\2022\2022-0033 (Tara Esmeralda Phase II)\DWG\2022-0033-500-Plat-PhII.dwg - Sheet 2

eda consultants inc.
 LB 2389
 720 S.W. 2nd Ave., South Tower, Suite 300
 GAINESVILLE, FLORIDA 32601
 TEL (352) 373-3541
 www.edafl.com mail@edafl.com