

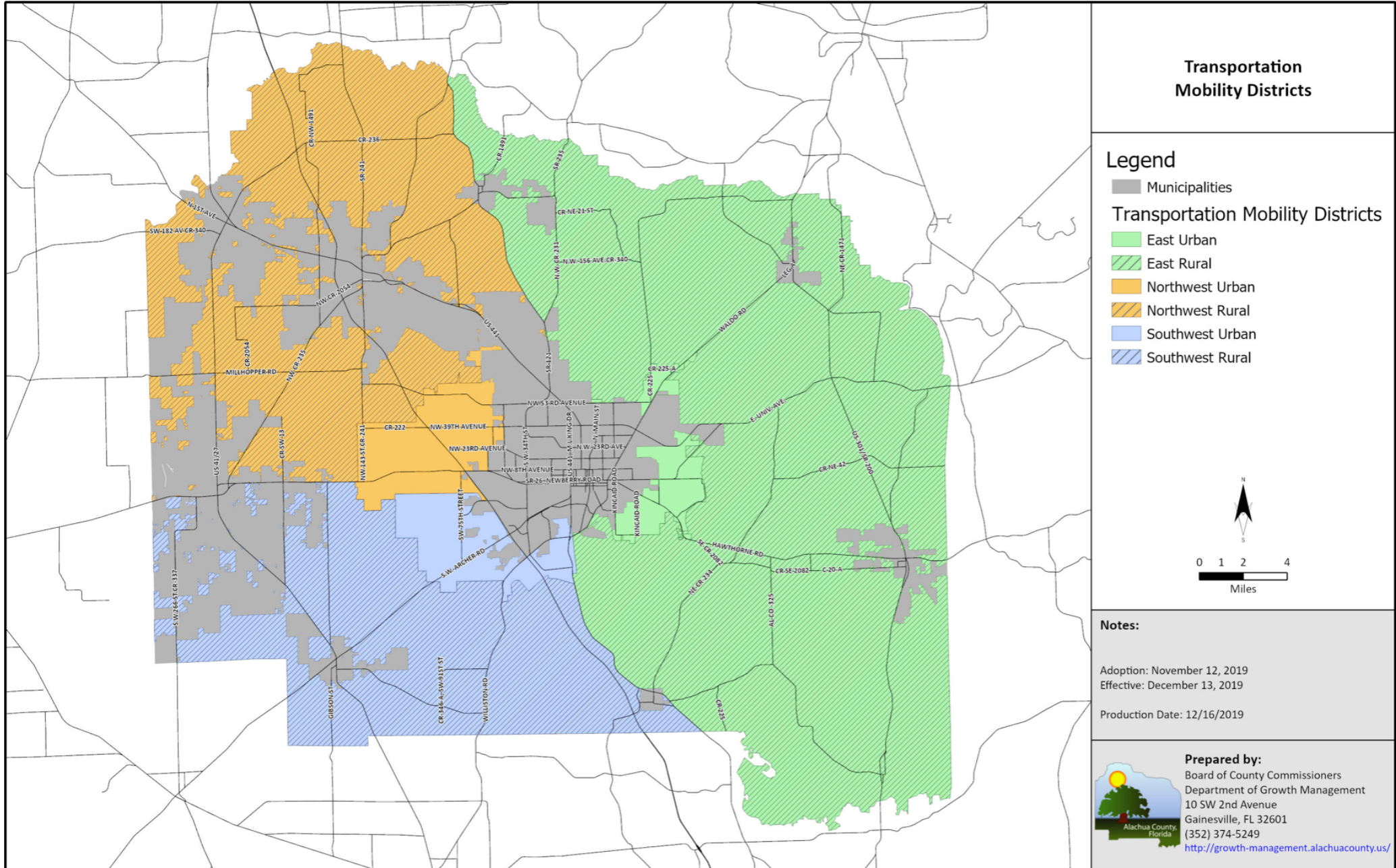
ALACHUA COUNTY

MOBILITY FEE UPDATE

June 6th, 2023

**Presented by: Jonathan B. Paul, AICP
NUE Urban Concepts, LLC**

Map 10. Transportation Mobility Districts - EXISTING (ADOPTED IN COMPREHENSIVE PLAN)

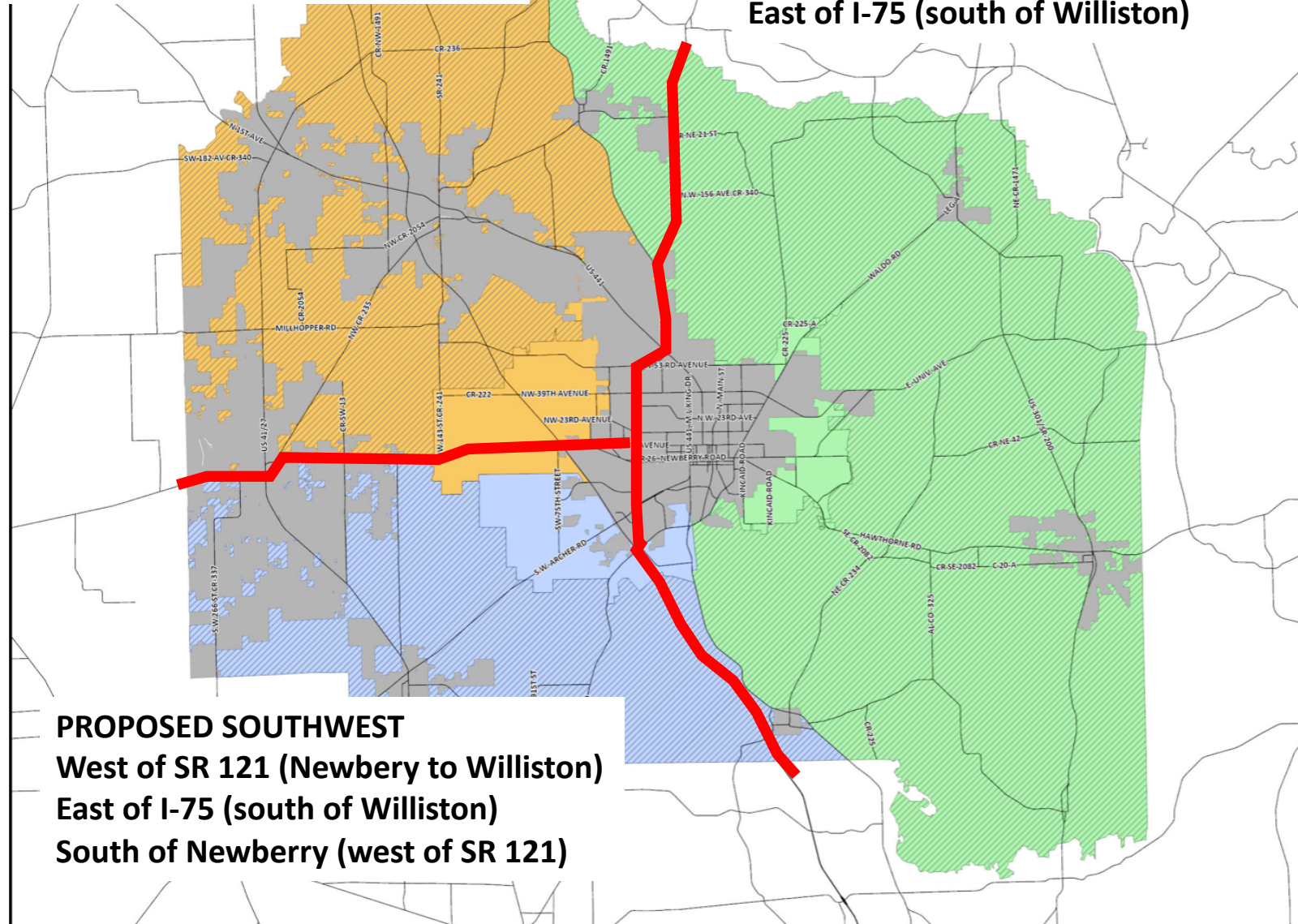


Map 10. Transportation Mobility Districts - PROPOSED AS PART OF FEE UPDATE

PROPOSED NORTHWEST

West of SR 121 (north of Newberry)
North of Newberry (west of SR 121)

PROPOSED EAST
East of SR 121 (north of Williston)
East of I-75 (south of Williston)



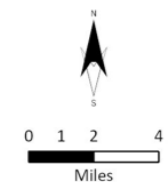
PROPOSED SOUTHWEST

West of SR 121 (Newberry to Williston)
East of I-75 (south of Williston)
South of Newberry (west of SR 121)

Transportation Mobility Districts

Legend

- Municipalities
- Transportation Mobility Districts
 - East Urban
 - East Rural
 - Northwest Urban
 - Northwest Rural
 - Southwest Urban
 - Southwest Rural



Notes:

Adoption: November 12, 2019
Effective: December 13, 2019
Production Date: 12/16/2019

Prepared by:
Board of County Commissioners
Department of Growth Management
10 SW 2nd Avenue
Gainesville, FL 32601
(352) 374-5249
<http://growth-management.alachuacounty.us/>

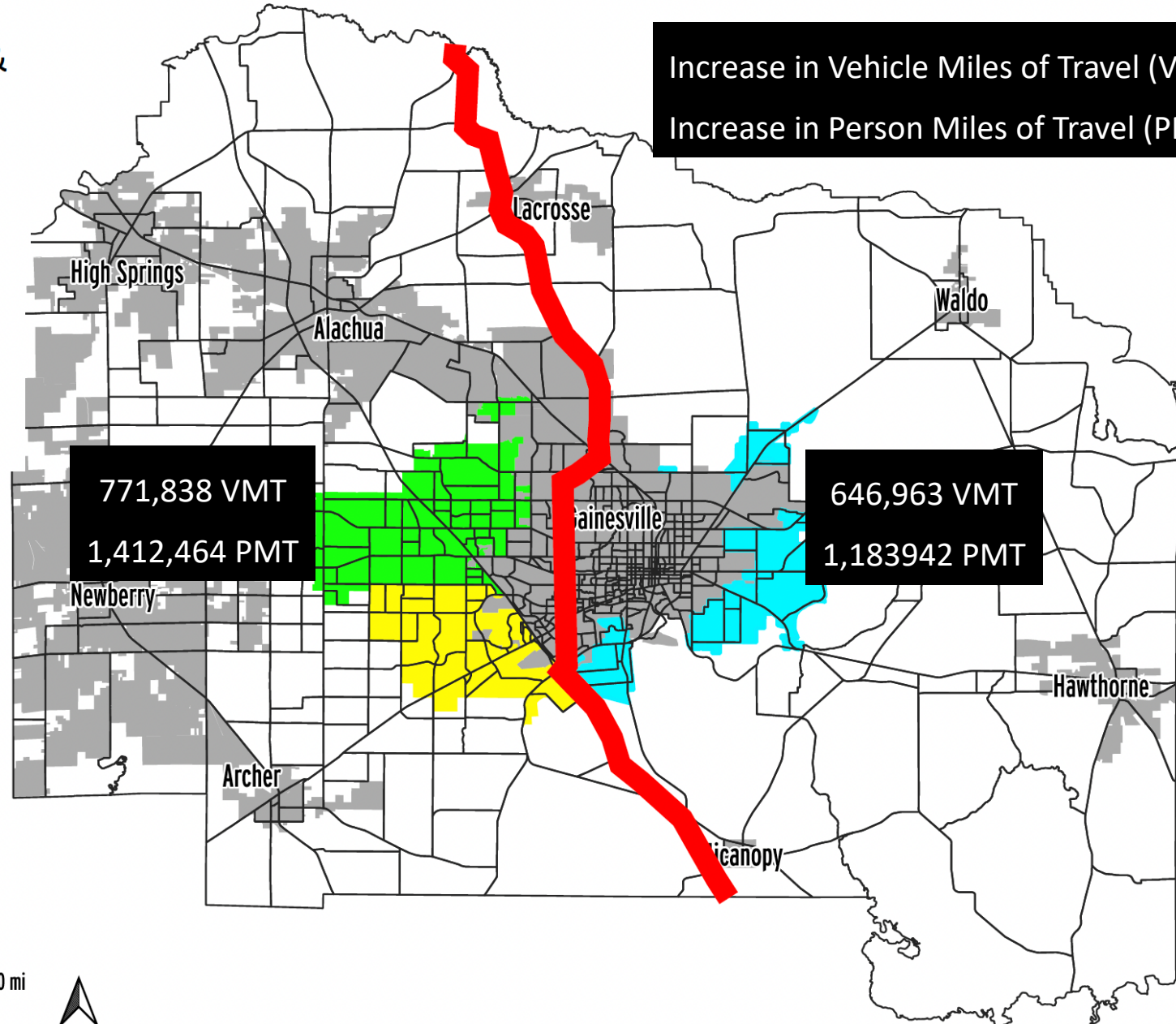


VMT MODEL ANALYSIS FOR ALACHUA COUNTY (EAST & WEST VMT)



All VMT east of SR 121 & I-75 (south of SR 121)
Exclude SR 121 & I-75
VMT in East

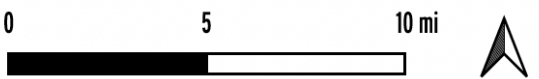
All VMT west of SR 121 & I-75 (south of SR 121)
Include SR 121 in West
VMT – Exclude I-75 VMT



Increase in Vehicle Miles of Travel (VMT) 2023-2040
Increase in Person Miles of Travel (PMT) 2023-2040

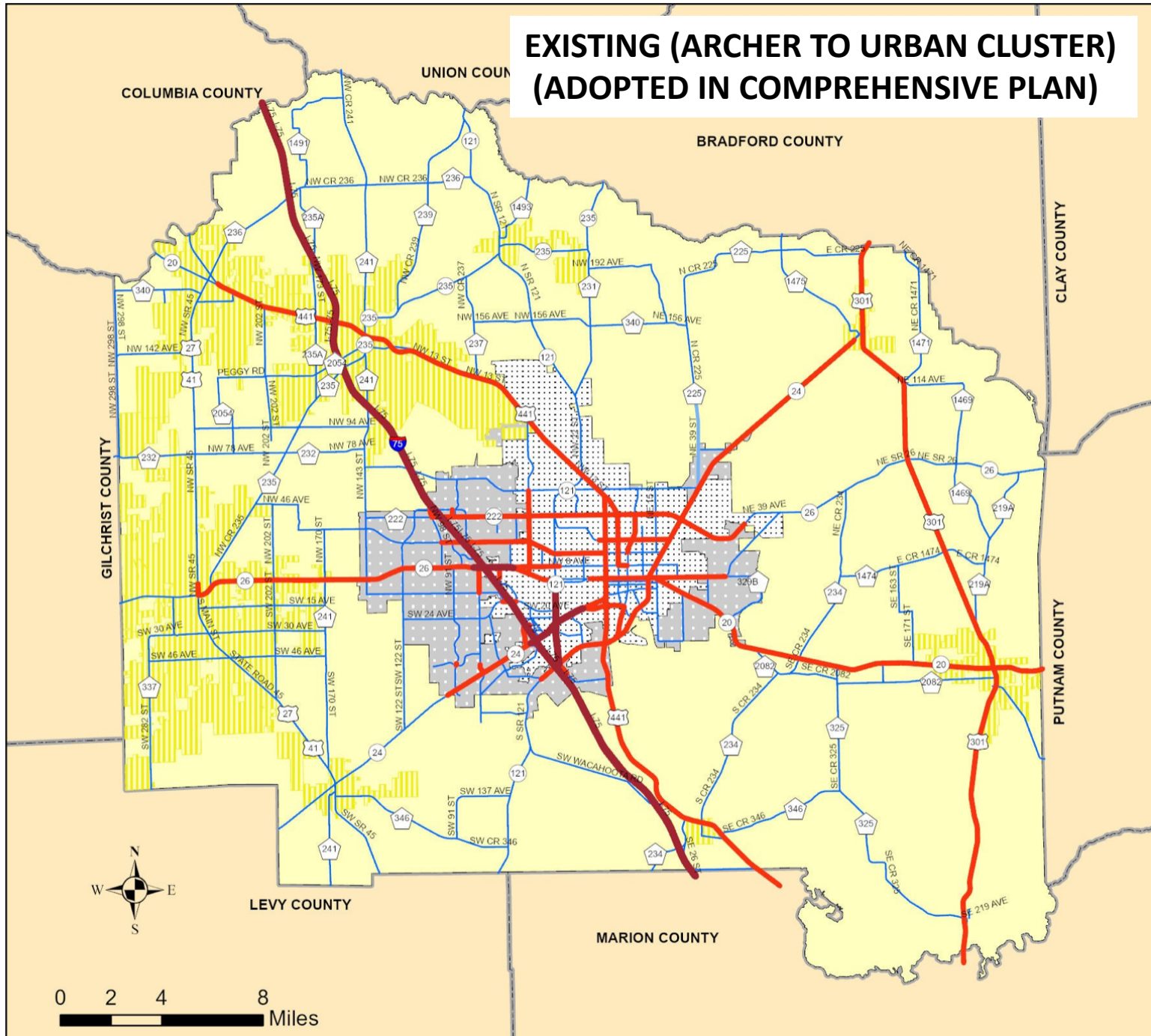
771,838 VMT
1,412,464 PMT

646,963 VMT
1,183,942 PMT



EXISTING (ARCHER TO URBAN CLUSTER) (ADOPTED IN COMPREHENSIVE PLAN)

Future Transportation Circulation Map (Number of Traffic Lanes 2040)



- Gainesville Regional Airport
- Gainesville Boundary
- Incorporated Areas
- Urban Cluster
- Interstate Highway
- US Route
- State Roadways
- County Roads

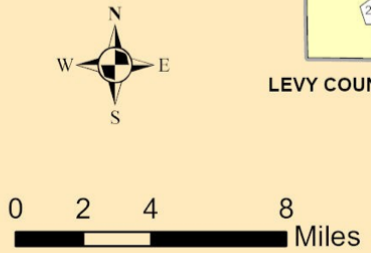
- Traffic Lanes
- 2
 - 3
 - 4
 - 6

NOTES:

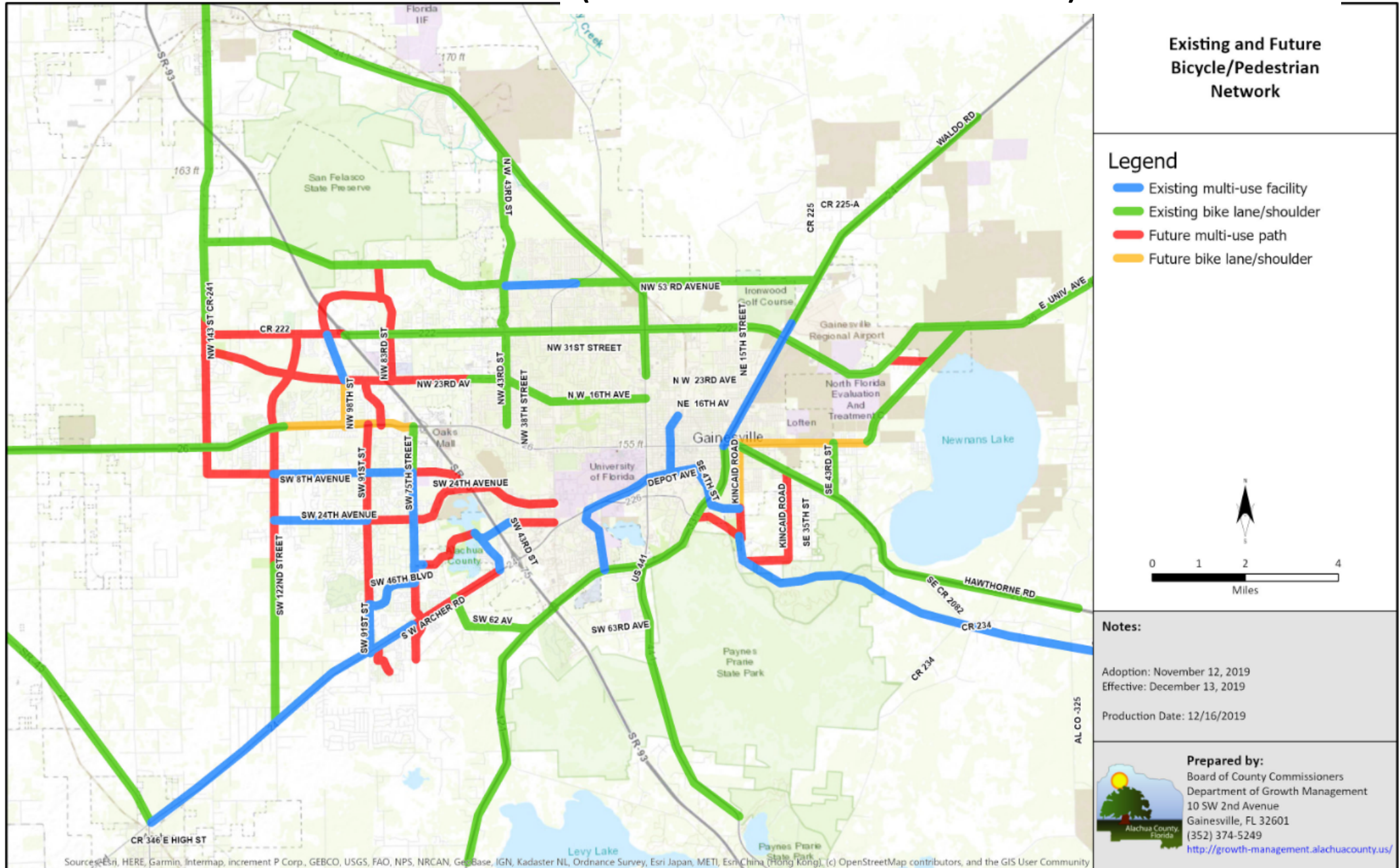
- Roads in municipalities not maintained by the County are shown for informational purposes only.
- SOURCES:
-MTPO Year 2035 Long Range Transportation Plan

-Projects within Alachua County Capital Improvements Element

Prepared by Alachua County Growth Management Department
Adoption: November 12, 2019
Effective: December 13, 2019
Produced On: 12/16/2019
File Path: V:\GIS\Public_GIS\Projects_2018\Mobility

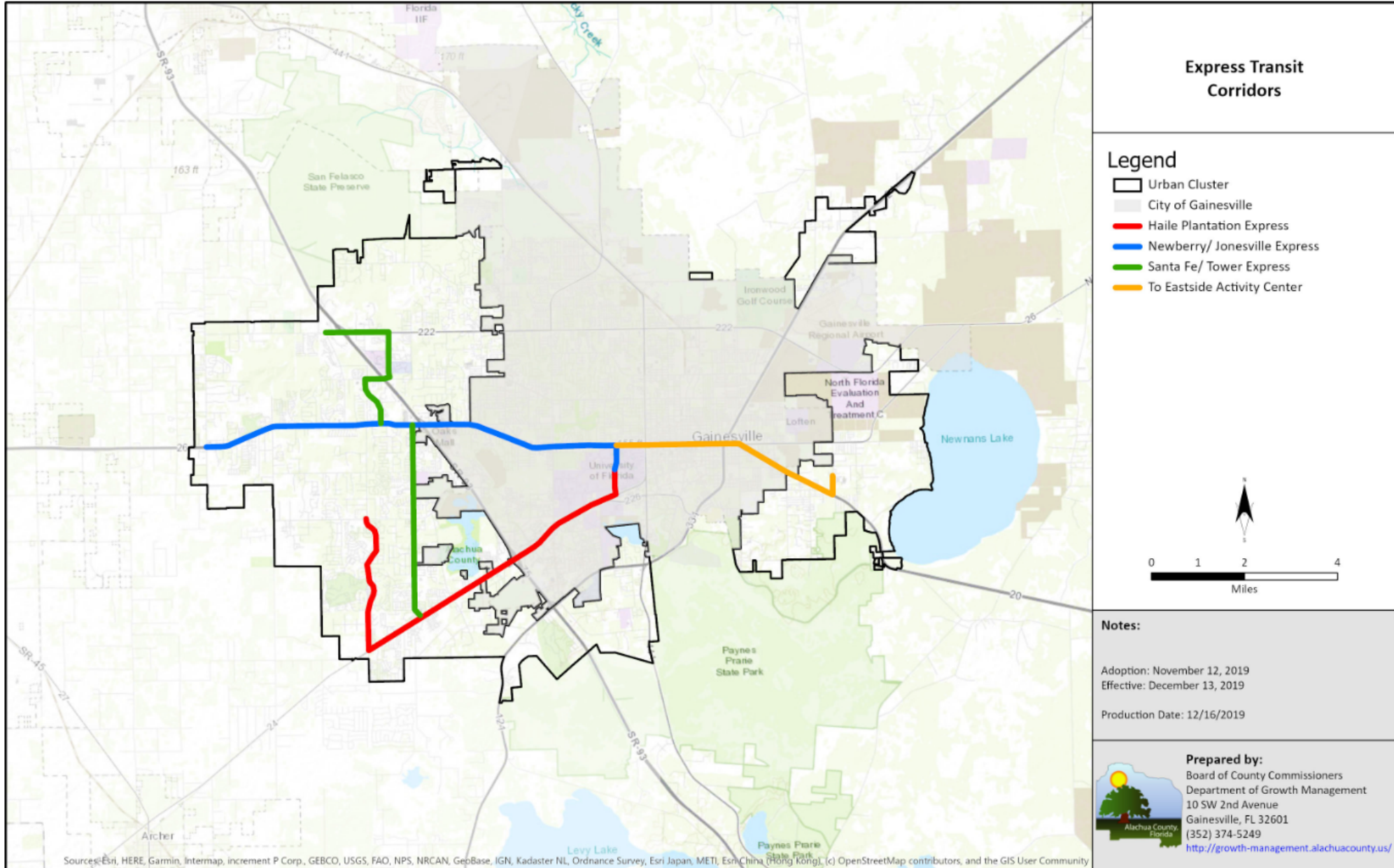


EXISTING MULTI-MODAL (BIKE LANES OUTSIDE CLUSTER) (ADOPTED IN COMPREHENSIVE PLAN)

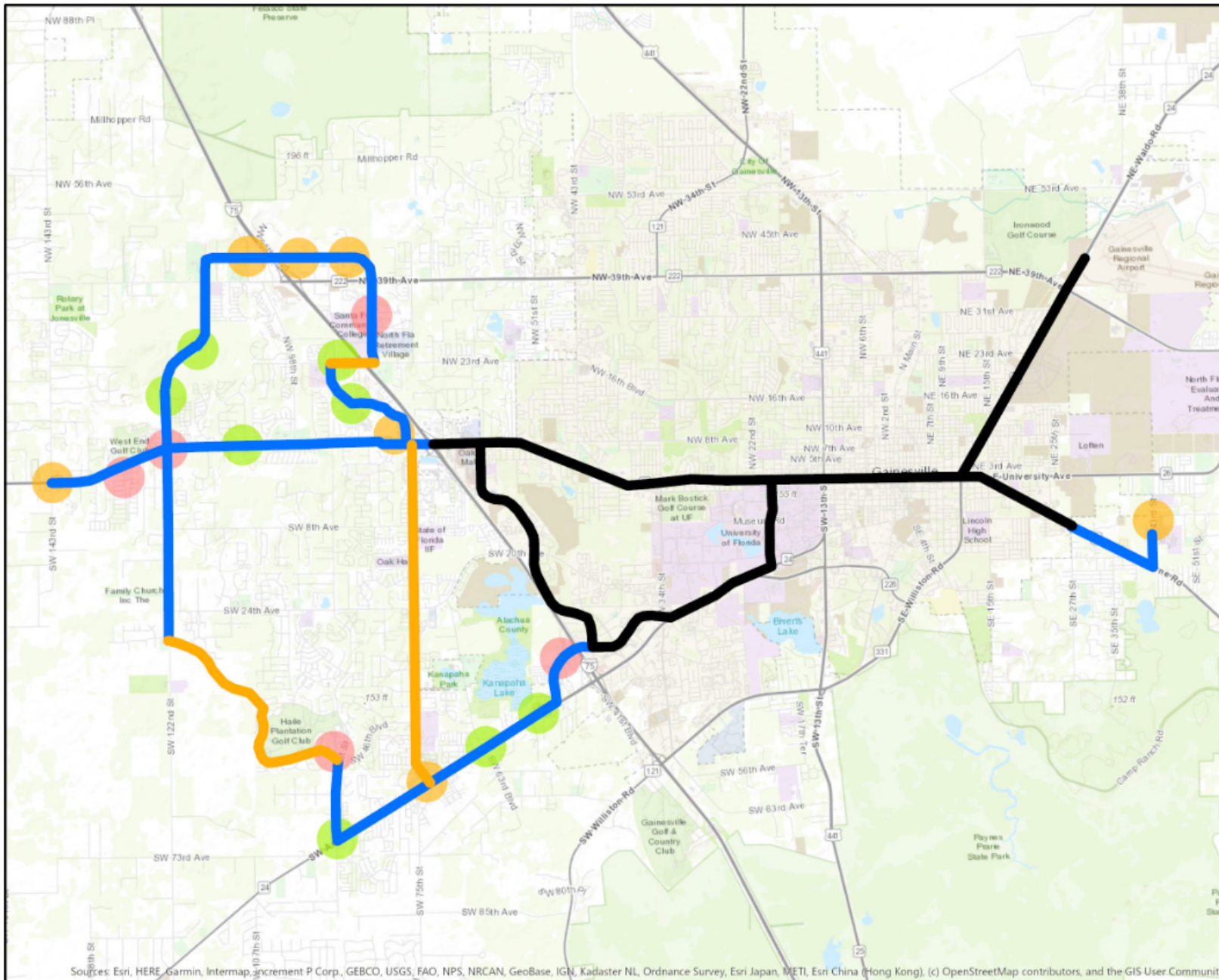


Map 5. Express Transit Corridors

EXISTING EXPRESS TRANSIT CORRIDORS (ADOPTED IN COMPREHENSIVE PLAN)



Map 6. Rapid Transit Corridor EXISTING DEDICATED TRANSIT CORRIDORS (ADOPTED IN COMPREHENSIVE PLAN)



**Map 6
Rapid
Transit
Corridors**

Legend

- Rapid Transit Corridors**
 - Dedicated Transit Lanes
 - Shared Lanes
 - Conceptual
- Development Locations**
 - Activity Center
 - Existing TND or TOD
 - Potential TND or TOD

0 1 2 4
Miles

Notes:

Adoption: November 12, 2019
Effective: December 13, 2019
Production Date: 12/16/2019

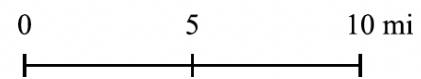
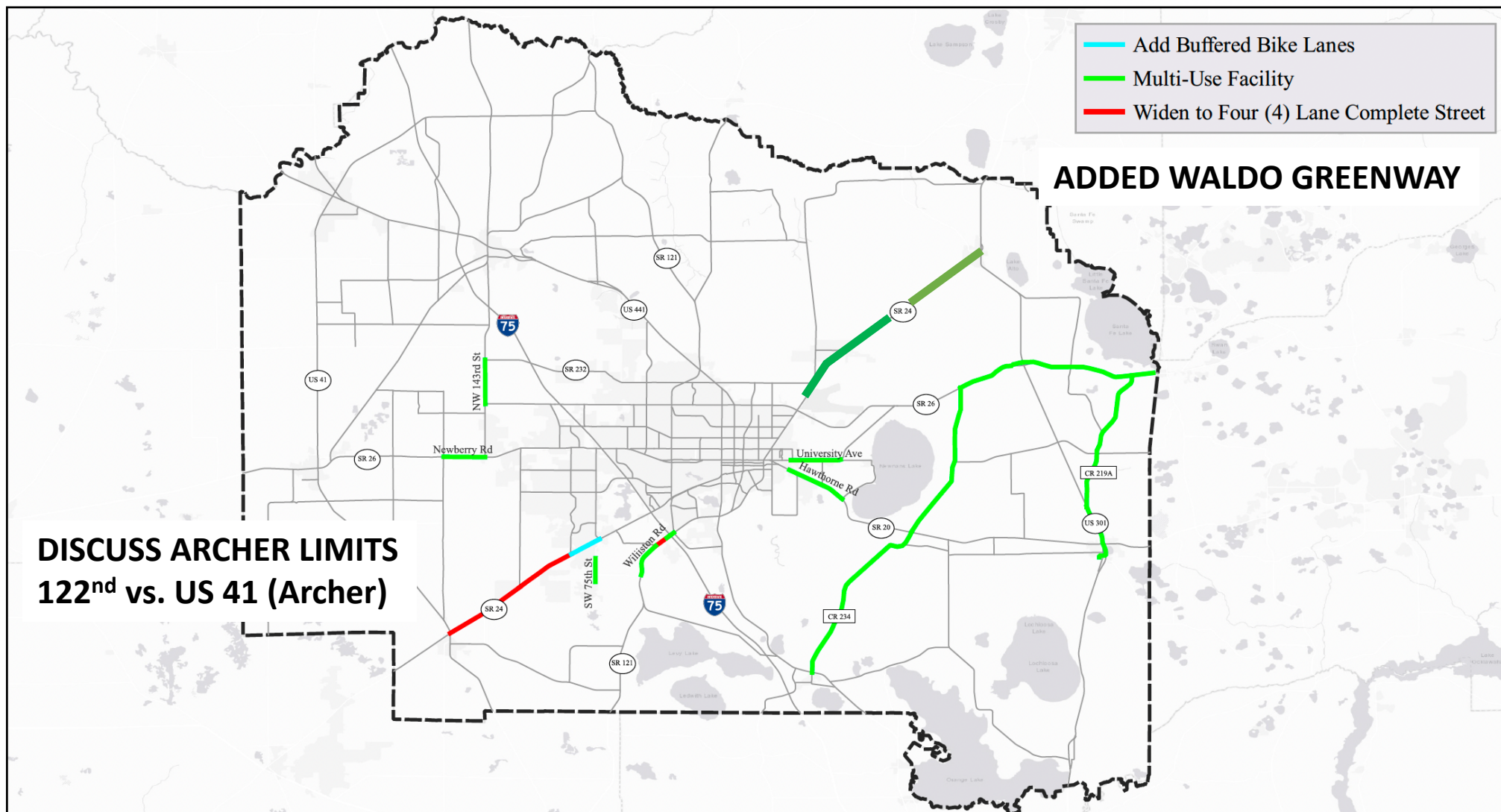
Prepared by:
Board of County Commissioners
Department of Growth Management
10 SW 2nd Avenue
Gainesville, FL 32601
(352) 374-5249
<http://growth-management.alachuacounty.us/>

Sources: Esri, HERE, Garmin, Intermap, increment P Corp., GEBCO, USGS, FAO, NPS, NRCAN, GeoBase, IGN, Kadaster NL, Ordnance Survey, Esri Japan, METI, Esri China (Hong Kong). (c) OpenStreetMap contributors, and the GIS User Community



Alachua County: 2040 Mobility Plan Additions **DRAFT**

**For discussion purposes*



Project Name-Location	Project Description	Project Length	Mobility District	Funding Source	FY 2023-2030	FY2031-2040	Total	Person Miles of Capacity (PMC)
NW District								
Ft. Clarke Blvd from Newberry Road to NW 23rd Ave	2 Dedicated Transit Lanes	0.5	NW	(2)	\$688,629		\$688,629	3,600
NW 23rd Avenue from NW 59th Terrace to NW 83 rd	Widen to 3 lane complete street	1.4	NW	(1)	\$6,984,641		\$6,984,641	14,350
NW 23rd Avenue from NW 83rd to Ft. Clarke	Widen to 4 lanes, including bridge over I-75 + Transit Pre-emption Provisions	0.5	NW	(1)	\$25,000,000		\$25,000,000	34,400
NW 23rd Avenue from Ft. Clarke to NW 98th St	Widen to 4 lanes	0.4	NW	(1)	\$3,904,116		\$3,904,116	10,920
NW 23rd Avenue Extension from NW 98th St to NW 122nd St Extension	New Construction, 2 lanes	1.3	NW	(1)		\$5,367,388	\$5,367,388	24,960
NW 23rd Avenue Extension from NW 122nd St to CR 241 (NW 143rd St)	New Construction, 2 lanes	1.5	NW	(1)		\$6,193,140	\$6,193,140	28,800
NW 83rd Street from NW 39th Ave to NW 23rd St	2 Dedicated Transit Lanes	1	NW	(2)	\$1,377,258		\$1,377,258	7,200
NW 83rd Street from NW 39th Ave to NW 46th Avenue	New roadway + 2 Dedicated Transit Lanes	0.4	NW	(2)	\$2,140,510		\$2,140,510	9,024
NW 83rd Street Ext from Millhopper Road to Santa Fe Northern Boundary	New 2 lane roadway	0.75	NW	(2)	\$1,616,793		\$1,616,793	11,520
NW 46th Avenue from NW 83rd St Ext to NW 91St Ext	New roadway + 2 Dedicated Transit Lanes	0.4	NW	(2)	\$2,140,510		\$2,140,510	9,024
NW 46th Avenue from NW 91st St Ext to NW 98th St Ext	New 4 lane roadway + 2 Dedicated Transit Lanes & Bridge over I-75	0.9	NW	(2)	\$15,000,000		\$15,000,000	39,672
NW 46th Avenue from NW 98th Ext to NW 115th Ext	New Construction, 2 lanes + Dedicated Transit Lane	0.6	NW	(1)	\$3,177,557		\$3,177,557	14,208
NW 91st St Extension from Terminus to NW 46th Ext	New Construction, 4 lanes	0.25	NW	(2)	\$1,581,001		\$1,581,001	9,220
NW 98th Street Extension from NW 39th to NW 46th Avenue	New Construction, 4 lanes	0.25	NW	(2)	\$1,581,001		\$1,581,001	9,220
Newberry Road (SR 26) from I-75 to NW 109th Drive	Dedicated Transit Lane in median + signal upgrade	2.4	NW	(1), (3)	\$6,898,565		\$6,898,565	17,280
Newberry Road (SR 26) from NW 109th Drive to CR 241 (NW 143rd)	Dedicated Transit Lane in median + resurface & signal upgrade	1.9	NW	(1), (3)	\$5,461,364		\$5,461,364	13,680
NW 115th St from NW 39th Ave to NW 46th Ave	New Construction, 2 lanes + Dedicated Transit Lane	0.25	NW	(1)	\$2,194,606		\$2,194,606	5,920
NW 122nd St / 115th St from Newberry Road to NW 39th Ave	New Construction, 2 lanes + Dedicated Transit Lane	2.3	NW	(1)		\$12,180,634	\$12,180,634	54,464
Total Projected Cost (Dollar figures are Planning Level Cost Estimates. Funding Sources (1) Local Sources (2) Developer Funded (3) Non-local Sources)					\$79,746,550	\$23,741,162	\$103,487,713	317,462

Project Name-Location	Project Description	Project Length	Mobility District	Funding Source	FY 2023-2030	FY2031-2040	Total	Person Miles of Capacity (PMC)
SW District								
SW 20th Ave I-75 Bridge from SW 62nd Ave to SW 52nd Ave	Widen, 4 lanes with bridge over I-75	0.5	SW	(1), (3)	\$25,000,000		\$25,000,000	34,400
SW 91st Street / SW 73rd Ave Extension from Archer Road to SW 88th St	New Construction, 2 lane road	0.3	SW	(2)	\$646,717		\$646,717	4,608
Archer Road (SR 24) from SW 75th St to SW 45th St	Dedicated Transit Lane + signal upgrade	2	SW	(1), (3)	\$5,748,804		\$5,748,804	14,400
Archer Road (SR 24) from SW 75th Terr to SW 91st St	Widen, 4 lanes + Dedicated Transit Lane	1.31	SW	(1), (3)	\$ 18,411,666		\$18,411,666	99,560
Archer Road (SR 24) from SW 91st St to SW 122nd Street	Widen, 4 lanes (For Discussion Purposes)	2.56	SW	(1), (3)		\$ 35,980,050	\$35,980,050	176,128
Archer Road (SR 24) from SW 122nd Street to US HWY 41	Widen, 4 lanes (For Discussion Purposes)	3.49	SW	(1), (3)		\$ 49,050,927	\$49,050,927	240,112
New Road South and Parallel to Archer Road SW 63rd to Archer Road	New Construction, 2 lanes	1.5	SW	(1), (2)		\$ 5,430,830	\$5,430,830	24,300
SW 57th Road from SW 75th to SW 63rd	New Construction, 2 lanes	1.4	SW	(1), (2)		\$ 5,068,774	\$5,068,774	22,680
SW 63rd/ SW 67th Ave from SW 24th Ave to Archer Road	New Construction, 2 lanes	1.9	SW	(1), (2)		\$ 6,879,051	\$6,879,051	30,780
SW 91st St from SW 46th to Archer Road	Dedicated Transit Lane	1	SW	(1)		\$ 1,167,168	\$1,167,168	4,480
SW 122nd St from Newberry Road to SW 8th Ave	Dedicated Transit Lane	1.0	SW	(1)	\$ 1,167,168		\$1,167,168	4,480
SW 122nd St from SW 8th Ave to SW 37th Ave	Dedicated Transit Lane	1.75	SW	(1)	\$ 2,042,544		\$2,042,544	7,840
Williston Road (SR 121) from SW 41st Blvd to SW 62nd Blvd	Widen, 4 lanes + traffic signal at SW 41st Blvd (For Discussion Purposes)	0.59	SW	(1), (3)	\$8,792,277		\$8,792,277	40,592
Total Projected Cost (Dollar figures are Planning Level Cost Estimates. Funding Sources (1) Local Sources (2) Developer Funded (3) Non-local Sources)					\$61,809,177	\$103,576,800	\$165,385,976	704,360
East District								
Hawthorne Road from SE 24th to SE 43rd	Dedicated Transit Lanes	1.5	E	(1), (3)	\$4,311,603		\$4,311,603	21,600
Total Projected Cost (Dollar figures are Planning Level Cost Estimates. Funding Sources (1) Local Sources (2) Developer Funded (3) Non-local Sources)					\$4,311,603		\$4,311,603	21,600

Project Name-Location	Project Description	Project Length	Mobility District	Funding Source	FY 2023-2030	FY2031-2040	Total	Person Miles of Capacity (PMC)
NW District (Multimodal)								
W. University Ave from SW 75th St to East Terminus	Sidewalk facility	0.5	NW	(1), (2), (3)	\$191,964		\$191,964	600
Newberry Rd (SR 26) from NW 143rd St to NW 170th St	Multiuse off-road facility (For Discussion Purposes)	1.65	NW	(1), (3)		\$1,013,569	\$1,013,569	5,940
NW 143rd St (CR 241) from Newberry Road to NW 39th Ave	Multiuse off-road facility	1.5	NW	(1), (2), (3)	\$670,557		\$670,557	5,400
NW 143rd St (CR 241) from NW 39th Ave to NW 69th Ave	Multiuse off-road facility (For Discussion Purposes)	2.0	NW	(1), (3)		\$894,076	\$894,076	7,200
NW 76 th Dr from Tower Road to Tower Road	6 ft. Sidewalk	0.4	NW	(2)	\$184,286		\$184,286	720
NW 75 th Dr from NW 76 th Dr to W University Ave	6 ft. Sidewalk	0.2	NW	(2)	\$92,143		\$92,143	360
NW 76 th Blvd from W University Ave to Skate Station	6 ft. Sidewalk	0.3	NW	(2)	\$138,214		\$138,214	540
Millhopper Greenway from Millhopper Road to NW 39th	Multiuse off-road facility	1.5	NW	(1), (3)	\$1,005,837		\$1,005,837	9,000
CR 235A from end of existing sidewalk to NW 177th Ave	Sidewalk	0.4	NW	(2)	\$153,571		\$153,571	480
SW 122nd St from Newberry Rd to SW 8th Ave	Multiuse off-road facility	1	NW	(1), (2)	\$670,558		\$670,558	6,000
NW 39th Ave from NW 143rd St to I-75	Multiuse off-road facility	3	NW	(1), (2), (3)		\$1,341,114	\$1,341,114	10,800
Total Projected Cost (Dollar figures are Planning Level Cost Estimates. Funding Sources (1) Local Sources (2) Developer Funded (3) Non-local Sources)					\$3,107,130	\$3,248,759	\$6,355,888	47,040

Project Name-Location	Project Description	Project Length	Mobility District	Funding Source	FY 2023-2030	FY2031-2040	Total	Person Miles of Capacity (PMC)
SW District (Multimodal)	(FOR DISCUSSION PURPOSES)							
SW 24th Ave from SW 87th to SW 77 th St	Multiuse off-road facility	0.5	SW	(1)	\$223,519		\$223,519	1,800
Archer Road from SW 76 th Ter to SW 45 th St	Multiuse off-road facility	2.25	SW	(3)	\$1,508,756		\$1,508,756	13,500
Archer Braid from Tower Road to Lake Kanapaha	Multiuse off-road facility	1	SW	(1), (2), (3)	\$670,558		\$670,558	6,000
Archer Road (SR 24) from SW 75th Terr to SW 91st St	Buffered Bike Lanes	1.31	SW	(1), (3)	\$1,019,327		\$1,019,327	7,598
Archer Road (SR 24) from SW 91st St to SW 122nd Street	Sidewalk on north side of ROW + Buffered Bike Lanes	2.56	SW	(1), (3)		\$2,974,822	\$2,974,822	17,920
Archer Road (SR 24) from SW 122nd Street to US HWY 41	Sidewalk on north side of ROW + Buffered Bike Lanes	3.49	SW	(1), (3)		\$4,055,520	\$4,055,520	24,430
SW 122nd St from SW 40th Ave to SW 24th Ave	Multiuse off-road facility	2	SW	(2)	Developer funded			
SW 75th St from SW 75th Way to SW 73rd Way	Multiuse off-road facility	1.1	SW	(1), (3)		\$ 491,742	\$491,742	3,960
SW 75th St from SW 73rd Way to 6200 Block of SW Archer Road	Multiuse off-road facility	1.6	SW	(1)	\$ 715,261		\$715,261	5,760
SW 20th/24th Ave from Tower Road to I-75	Multiuse off-road facility	1.5	SW	(1)	\$ 670,557		\$670,557	5,400
SW 122nd St from SW 24th Ave to SW 8th Ave	Multiuse off-road facility	1	SW	(1), (2)	\$ 447,038		\$447,038	3,600
SW 122nd St from Archer Road to SW 24th Ave	Multiuse off-road facility	1	SW	(1), (2)	\$ 447,038		\$447,038	3,600
SW 91st St from SW 46 th Blvd to SW 8th Ave	Multiuse off-road facility	3	SW	(1)		\$2,011,674	\$2,011,674	18,000
SW 136 th St from W Newberry Rd to SW 6 th Rd	6 ft. Sidewalk	0.5	SW	(1)		\$230,357	\$230,357	900
Williston Road (SR 121) from SW 34th Street to Interstate 75	Multi-Use off-road facility	0.18		(1), (3)	\$110,571		\$110,571	648
Williston Road (SR 121) from Interstate 75 to SW 41st Blvd	Multi-Use off-road facility	0.18		(1), (3)	\$110,571		\$110,571	648
Williston Road (SR 121) from SW 41st Blvd to SW 62nd Blvd	Multi-Use off-road facility on both sides of ROW & Buffered Bike Lanes	0.59		(1), (3)	\$1,118,468		\$1,118,468	9,086
Williston Road (SR 121) from SW 62nd Blvd to SW 85th Ave	Multi-Use off-road facility	1.53		(1), (3)		\$ 683,968	\$683,968	5,508
Total Projected Cost (Dollar figures are Planning Level Cost Estimates. Funding Sources (1) Local Sources (2) Developer Funded (3) Non-local Sources)					\$7,041,663	\$10,448,083	\$17,489,746	128,358

Project Name-Location	Project Description	Project Length	Mobility District	Funding Source	FY 2023-2030	FY2031-2040	Total	Person Miles of Capacity (PMC)		
EAST District (Multimodal)	(FOR DISCUSSION PURPOSES)									
CR 219A from SR 26 to US Hwy 301	Multiuse off-road facility	6.5	E	(1), (3)		\$4,358,627	\$4,358,627	39,000		
CR 234 from SR 26 to Gainesville Hawthorne Trail	Multiuse off-road facility or Evaluate further in Trails Master Plan	7.11	E	(1), (3)	\$3,178,440		\$3,178,440	25,596		
CR 234 from Gainesville Hawthorne Trail to US Hwy 441	Multiuse off-road facility	8.1	E	(1), (3)		\$3,621,008	\$3,621,008	29,160		
SE 27 th St from SE 28 th Dr to SE 29 th Pl	6 ft. sidewalk	1.2	E	(1), (3)	\$552,857		\$552,857	2,160		
NE 27th Ave from SR 222 to SR 26	Multiuse off-road facility	2.7	E	(1), (3)	\$1,810,507		\$1,810,507	16,200		
Kincaid Loop Connector from SE 15th to Hawthorne Road	Multiuse off-road facility	3.1	E	(1), (3)	\$2,078,730		\$2,078,730	18,600		
NE 39 th Ave from Airport Entrance to NE 52 nd St	6ft. Sidewalk	1	E	(1), (3)		\$460,714	\$460,714	1,800		
SE Hawthorne Rd (SR 20) from SE 24th Street to SE 43rd Street	Multiuse off-road facility	1.48	E	(1), (3)	\$661,616		\$661,616	5,328		
SE Hawthorne Rd (SR 20) from SE 43rd Street to Lakeshore Dr (CR 329 B)	Multiuse off-road facility	1.0	E	(1), (3)	\$447,038		\$447,038	3,600		
SR 26 from NE 255th Drive to CR 219A	Multiuse off-road facility or Evaluate further in Trails Master Plan	0.84	E	(1), (3)		\$563,269	\$563,269	5,040		
SR 26 from CR 219A to US Hwy 301	Multiuse off-road facility or Evaluate further in Trails Master Plan	4.5	E	(1), (3)		\$2,514,591	\$2,514,591	21,600		
SR 26 from US Hwy 301 to CR 234	Multiuse off-road facility or Evaluate further in Trails Master Plan	2.82	E	(1), (3)		\$1,575,810	\$1,575,810	13,536		
University Ave (SR 26) from SE 24th Street to SE 43rd Street	Multiuse off-road facility	1.26	E	(1), (3)	\$563,268		\$563,268	4,536		
University Ave (SR 26) from SE 43rd Street to E. University Ave	Multiuse off-road facility	0.73	E	(1), (3)	\$326,338		\$326,338	2,628		
US Hwy 301 Corridor from CR 219A to Gainesville Hawthorne Trail	Multiuse off-road facility or Evaluate further in Trails Master Plan	2.74	E	(1), (3)		\$1,837,329	\$1,837,329	16,440		
Waldo Road (SR 24) from NE 39th Ave to SW 3rd Street	Multiuse off-road facility or Evaluate further in Trails Master Plan	9.00	E	(1), (3)		\$6,035,022	\$6,035,022	54,000		
Total Projected Cost (Dollar figures are Planning Level Cost Estimates. Funding Sources (1) Local Sources (2) Developer Funded (3) Non-local Sources)							\$9,618,793	\$20,966,370	\$36,620,185	259,224

ADDED MULTI-USE PATH on WALDO ROAD

Project Name-Location	Project Description	Project Length	Mobility District	Funding Source	FY 2023-2030	FY2031-2040	Total	Person Miles of Capacity (PMC)
NW District (TRANSIT)								
Jonesville Express	Express Transit Service from Jonesville to UF		(1), (2), (3)		\$3,341,156	\$4,773,080	\$8,114,236	34,000
Jonesville Activity Center Park & Ride	Park & Ride	NW	(1), (2), (3)		\$500,000		\$500,000	
NW 122nd Park & Ride	Park & Ride	NW	(1), (2), (3)			\$125,000	\$125,000	
NW 98th Area Park & Ride	Park & Ride	NW	(1), (2), (3)			\$125,000	\$125,000	
Ft. Clarke / I-75 Park & Ride	Park & Ride	NW	(1), (2), (3)		\$250,000		\$250,000	
Spring Hills Activity Center Park & Ride	Park & Ride	NW	(2)		Projected Developer Constructed			
Santa Fe Park & Ride	Park & Ride	NW	(2)		Projected Developer Constructed			
Santa Fe College Park & Ride	Park & Ride	NW	(2)		College Funded			
Northwest Express Transit Vehicles	Buses	NW	(1), (2), (3)		\$ 1,000,000	\$ 2,000,000	\$3,000,000	
Total Projected Cost (Dollar figures are Planning Level Cost Estimates. Funding Sources (1) Local Sources (2) Developer Funded (3) Non-local Sources)					\$5,091,156	\$6,773,080	\$11,864,236	34,000
SW District (TRANSIT)								
Santa Fe / Tower Express	Express Transit Service from Springhills Activity Center to Archer / Tower Activity Center	SW	(1), (2), (3)		\$3,341,156	\$4,773,080	\$8,114,236	34,000
Haile Plantation Express	Express Transit Service from Haile Plantation to UF	SW	(1), (2), (3)		\$3,341,156	\$4,773,080	\$8,114,236	34,000
Veterans Park, Park & Ride	Park & Ride	SW	(1), (2), (3)			\$250,000	\$250,000	
Tower / Archer Activity Center Park & Ride	Park & Ride	SW	(1), (2), (3)		\$375,000	\$250,000	\$625,000	
I-75 Park & Ride	Park & Ride	SW	(1), (2), (3)			\$25,000	\$25,000	
SW 62nd Area Park & Ride	Park & Ride	SW	(1), (2), (3)			\$125,000	\$125,000	
SW 91st Park & Ride	Park & Ride	SW	(1), (2), (3)			\$125,000	\$125,000	
Haile Plantation Park & Ride	Park & Ride	SW	(1), (2), (3)		\$375,000		\$375,000	
Southwest Express Transit Vehicles	Buses	SW	(1), (2), (3)		\$2,000,000	\$4,000,000	\$6,000,000	
Total Projected Cost (Dollar figures are Planning Level Cost Estimates. Funding Sources (1) Local Sources (2) Developer Funded (3) Non-local Sources)					\$9,432,312	\$14,321,160	\$23,753,472	68,000
EAST District (TRANSIT)								
Eastside Express Service	Express Transit Service from Eastside Activity Center to UF	E	(1), (2), (3)		\$3,341,156	\$4,773,080		68,000
Eastside Park Park & Ride	Park & Ride	E	(1), (2), (3)		\$500,000			
East Express Transit Vehicles	Buses	E	(1), (2), (3)		\$1,000,000	\$2,000,000		
Total Projected Cost (Dollar figures are Planning Level Cost Estimates. Funding Sources (1) Local Sources (2) Developer Funded (3) Non-local Sources)					\$4,841,156	\$6,773,080	\$11,614,236	68,000

Proposed Multimodal Programs & Projects (ALL FOR DISCUSSION PURPOSES)

Programs & Projects	Initial Basis for PLC & PMC	Planning Level Cost (PLC)	Person Miles of Capacity (PMC)
Implement Countywide Pedestrian / Bicycle / Trails Master Plan	100 Miles of Multiuse Facilities	\$44,703,800	360,000
Safe Routes to Schools	25 Miles of Sidewalks	\$11,517,850	60,000
High Visibility Crosswalks	30 High Visibility Crosswalks	\$1,500,000	12,000
Implement Safe Streets for All Plan & Program	100 Miles of Traffic Calmed Streets	\$2,500,000	40,000
Intersection Capacity & Safety Enhancements	40 Intersection Upgrades	\$20,000,000	80,000
Micromobility & Microtransit Ordinances & Programs	1,000 e-devices deployed	\$2,000,000	10,000
Multimodal Grants, Plans, Programs & Studies	250,000 a year	\$4,250,000	17,000
Transit Stop Upgrades	100 Upgraded Transit Stops	\$1,250,000	4,200
Total		\$87,721,650	583,200

CAN AMEND, ADD OR REMOVE PROJECTS

PERSON MILES OF CAPACITY RATE				
	EAST	EAST	NW & SW	NW & SW
	DISTRICT	LESS FUNDING*	DISTRICT	LESS FUNDING**
Road Cost	\$4,311,603	\$4,311,603	\$268,873,689	\$159,509,597
Road Capacity	21,600	21,600	1,021,822	482,507
Multimodal Cost	\$36,620,185	\$29,296,148	\$23,845,634	\$23,845,634
Multimodal Capacity	259,224	259,224	175,398	175,398
Transit Cost	\$11,614,236	\$11,614,236	\$35,617,708	\$35,617,708
Transit Capacity	68,000	68,000	102,000	102,000
Plans & Programs Cost	\$19,956,675	\$19,956,675	\$57,019,073	\$57,019,073
Plans & Programs Capacity	132,678	132,678	379,080	379,080
Total Cost	\$72,502,699	\$65,178,662	\$385,356,104	\$275,992,012
Total Capacity	481,502	481,502	1,678,300	1,138,985
PMC RATE	\$ 150.58	\$ 135.37	\$ 229.61	\$ 242.31
* Less COUNTY (20%) Funding for Multimodal Cost. ** Less FDOT (90%) Funding for Archer and Williston Road widening & COG (5%) Funding Share for Williston Road				

CAN AMEND COUNTY SHARE OF FUNDING. FOR EXAMPLE, EAST SIDE MULTIMODAL REFLECTS 10% FUNDING COUNTY FUNDING OFF-SETS COST AND KEEPS CAPACITY. NON-COUNTY "PROJECTED" FUNDING OFF-SETS COST & CAPACITY

UPDATES TO MMTM / MOBILITY FEE CONSIDERATIONS

- (1) LOWER FEES FOR EASTERN ALACHUA (FEW ROAD / TRANSIT CAPACITY PROJECTS)**
- (2) WESTERN ALACHUA COUNTY (MULTIPLE ROAD & TRANSIT CAPACITY PROJECTS)**
- (3) CHANGES TO LAND USE SCHEDULE (TRIP GENERATION & MARKET CONDITIONS)**
- (4) POTENTIAL RESIDENTIAL FEE OUTSIDE URBAN CLUSTER**
- (5) CONSOLIDATE RECREATION TO INDOOR VS OUTDOOR**
- (6) CONSOLIDATE PRIVATE EDUCATION**
- (7) CONSOLIDATE LONG TERM CARE**
- (8) CONSOLIDATE OFFICE**
- (9) NEW RETAIL USES (BASED ON TRIP IMPACT)**
- (10) NEW HIGH IMPACT USE CATEGORY FOR FAST FOOD**

EXISTING MMTM

2013 ALACHUA COUNTY MULTI-MODAL TRANSPORTATION MITIGATION			
		2013	
	MMTM	MMTM	MMTM
	Non	TND	TOD
	TND/TOD		
RESIDENTIAL:			
RESIDENTIAL URBAN SERVICE / CLUSTER AREA:			
All Residential per 1,000 FT ²	\$ 3,164	\$ 2,494	\$ 1,851
Residential Expansion per 1,000 FT ²	\$ 1,582	\$ 1,247	\$ 929
RECREATION:			
Park Per Acre	\$ 1,706	\$ 1,450	\$ 1,194
Golf Course Per Hole	\$ 21,480	--	--
Racquet/Tennis Club Per Court	\$ 11,592	\$ 9,855	\$ 8,114
Health/Fitness Club Per 1,000 FT ²	\$ 9,864	\$ 8,384	\$ 6,904
Recreation/Community Center Per 1,000 FT ²	\$ 6,853	\$ 5,825	\$ 4,798
INSTITUTIONAL PER 1,000 FT²:			
Private School (K-12)	\$ 3,502	\$ 2,977	\$ 2,480
Place of Worship	\$ 3,256	\$ 2,767	\$ 2,306
Day Care Center	\$ 4,702	\$ 3,997	\$ 3,291
Library	\$ 6,092	\$ 5,178	\$ 4,264
OFFICE PER 1,000 FT² :			
Businesses & Professional Services (less than 50,000 FT ²)	\$ 4,899	\$ 4,164	\$ 3,429
Businesses & Professional Services (50,000 FT ² & greater)	\$ 6,537	\$ 5,556	\$ 4,576

EXISTING MMTM

MEDICAL BUILDINGS PER 1,000 FT²:			
Medical / Dental Offices	\$ 7,133	\$ 6,063	\$ 4,993
Hospitals	\$ 6,684	\$ 5,682	\$ 4,679
Nursing Home	\$ 1,934	\$ 1,644	\$ 1,354
INDUSTRIAL BUILDINGS PER 1,000 FT²:			
Industrial, Manufacturing, Warehousing	\$ 4,384	--	--
Mini-Warehousing	\$ 1,393	--	\$ 697
GENERAL COMMERCIAL RETAIL PER 1,000 FT²:			
Small Scale Retail Store (less than 20,000 FT ²)	\$ 8,231	\$ 6,585	\$ 4,938
Medium Scale Retail Store (20,000 to 50,000 FT ²)	\$ 13,697	\$ 11,642	\$ 9,588
Large Scale Retail Store (greater than 50,000 FT ²)	\$ 21,898	\$ 18,614	\$ 15,329
Large Scale Retail Superstore	\$ 38,640	\$ 32,844	\$ 27,048
Large Scale Wholesale Club - Membership	\$ 24,870	\$ 20,080	\$ 16,540
Grocery Store	\$ 21,775	\$ 18,509	\$ 15,242
Pharmacy with Drive-Thru	\$ 14,897	\$ 12,662	\$ 10,428
Restaurant with Drive-Thru	\$ 26,295	\$ 22,351	\$ 18,406
Car Sales	\$ 15,764	--	--
Auto Parts Stores	\$ 14,950	--	--
Tire & Auto Repair	\$ 5,518	--	--
NON-RESIDENTIAL:			
Hotel Per Room	\$ 4,708	\$ 3,767	\$ 2,825
Movie Theater Per Screen	\$ 22,410	\$ 18,096	\$ 14,904
Bank with Drive-Thru Per Drive-Thru Lane	\$ 20,519	\$ 17,441	\$ 14,364
Convenience Market & Gas Per Pump	\$ 33,085	\$ 28,123	\$ 23,160
Quick Lube Vehicle Service Per Bay	\$ 6,243	\$ 5,254	\$ 4,327
Car Wash Per Stall	\$ 6,585	\$ 5,541	\$ 4,563

DRAFT RESIDENTIAL MMTM / MOBILITY FEE

Draft Alachau County Mobility Fee	Draft Mobility Fee (Western AC)			Draft Mobility Fee (Eastern AC)			Currently Adopted MMTM			Percent Increase
Use Categories, Use Classifications, and Representative Uses	NON TND/TOD	TND	TOD	NON TND/TOD	TND	TOD	NON TND/TOD	TND	TOD	NON TND/TOD
Residential Per 1,000 Sq. Ft.										
Urban Cluster Residential	\$ 3,865	\$ 3,283	\$ 2,902	\$ 2,159	\$ 1,834	\$ 1,621	\$ 3,164	\$ 2,494	\$ 1,851	22%
Urban Cluster Residential Expansion	\$ 1,932	\$ 1,645	\$ 1,451	\$ 1,080	\$ 919	\$ 811	\$ 1,582	\$ 1,247	\$ 929	22%
Outside Urban Cluster Residential	\$ 5,415	\$ -	\$ -	\$ 3,025	\$ -	\$ -	--	--	--	--
Outside Urban Cluster Residential Expansion	\$ 2,708	\$ -	\$ -	\$ 1,513	\$ -	\$ -	--	--	--	--

Adding Outside Urban Cluster

Current 2,600 sq. ft. cap

Could increase to 3,000 sq. ft. or 3,500 sq. ft.

DRAFT RECREATION & INSTITUTIONAL MMTM / MOBILITY FEE

Draft Alachau County Mobility Fee	Draft Mobility Fee (Western AC)			Draft Mobility Fee (Eastern AC)			Currently Adopted MMTM			Percent Increase
Use Categories, Use Classifications, and Representative Uses	NON TND/TOD	TND	TOD	NON TND/TOD	TND	TOD	NON TND/TOD	TND	TOD	NON TND/TOD
Recreation per 1,000 Sq. Ft. or unit of measure										
Outdoor Recreation (Amusement, Golf, Multi-Purpose, Parks, Sports, Tennis) per Acre	\$ 6,081	\$ 5,168	\$ 4,560	\$ 3,397	\$ 2,887	\$ 2,547	--	--	--	--
Indoor Recreation (Fitness, Health, Indoor Sports, Kids Activities, Theater, Yoga)	\$ 11,509	\$ 9,783	\$ 8,630	\$ 6,430	\$ 5,465	\$ 4,822	\$ 9,864	\$ 8,384	\$ 6,904	17%
Institutional per 1,000 Sq. Ft.										
Community Serving (Civic, Clubhouse, Lodge, Museum, Performing Arts, Place of Assembly or Worship)	\$ 3,784	\$ 3,215	\$ 2,838	\$ 2,114	\$ 1,796	\$ 1,585	\$ 3,256	\$ 2,767	\$ 2,306	16%
Long Term Care (Assisted Living, Congregate Care Facility, Nursing Facility)	\$ 2,495	\$ 2,122	\$ 1,871	\$ 1,394	\$ 1,186	\$ 1,045	\$ 1,934	\$ 1,644	\$ 1,354	29%
Private Education (Day Care, Private Primary School, Pre-K)	\$ 4,357	\$ 3,705	\$ 3,268	\$ 2,434	\$ 2,070	\$ 1,826	\$ 3,502	\$ 2,977	\$ 2,480	24%

Consolidating recreation to indoor vs outdoor

Institutional: (1) Community (2) Long Term Care (3) Private Education

DRAFT OFFICE & INDUSTRIAL MMTM / MOBILITY FEE

Draft Alachau County Mobility Fee	Draft Mobility Fee (Western AC)			Draft Mobility Fee (Eastern AC)			Currently Adopted MMTM			Percent Increase
Use Categories, Use Classifications, and Representative Uses	NON TND/TOD	TND	TOD	NON TND/TOD	TND	TOD	NON TND/TOD	TND	TOD	NON TND/TOD
Office per 1,000 Sq. Ft.										
Office (General, Higher Education, Hospital, Professional, Tutoring)	\$ 6,065	\$ 5,154	\$ 4,552	\$ 3,388	\$ 2,879	\$ 2,543	\$ 4,899	\$ 4,164	\$ 3,429	24%
Medical Office (Clinic, Dental, Emergency Care, Medical, Veterinary)	\$ 8,555	\$ 7,273	\$ 6,418	\$ 4,779	\$ 4,063	\$ 3,585	\$ 7,133	\$ 6,063	\$ 4,993	20%
Industrial Buildings per 1,000 Sq. Ft.										
Industrial (Assembly, Fabrication, Manufacturing, R&D, Trades, Utilities)	\$ 4,097	\$ 3,480	\$ 3,073	\$ 2,289	\$ 1,944	\$ 1,717	\$ 4,384	--	--	-7%
Commercial Storage (Mini-Warehouse, Boats, RVs & Outdoor Storage, Warehouse)	\$ 1,513	\$ 1,286	\$ 1,135	\$ 845	\$ 719	\$ 634	\$ 1,393	--	\$ 697	9%

Consolidating office & medical into two office types

Relocating Warehouse from Industrial to Commercial Storage

DRAFT RETAIL MMTM / MOBILITY FEE

Draft Alachau County Mobility Fee	Draft Mobility Fee (Western AC)			Draft Mobility Fee (Eastern AC)			Currently Adopted MMTM			Percent Increase
Use Categories, Use Classifications, and Representative Uses	NON TND/TOD	TND	TOD	NON TND/TOD	TND	TOD	NON TND/TOD	TND	TOD	NON TND/TOD
General Commercial Retail per 1,000 Sq. Ft.										
Multi-Tenant Retail (Excludes Retail Uses with Specific Land Use)	\$ 12,745	\$ 10,833	\$ 9,558	\$ 7,120	\$ 6,052	\$ 5,340	\$ 10,859	\$ 9,114	\$ 7,263	17%
Free-Standing Retail (Discount, Entertainment, Financial, Pharmacy, Retail, Sales, Services, Superstore)	\$ 25,126	\$ 21,356	\$ 18,843	\$ 14,037	\$ 11,931	\$ 10,527	\$ 21,898	\$ 18,614	\$ 15,329	15%
Grocery or Liquor Store (Grocery, Package Store, Supermarket, Wine & Spirits)	\$ 29,581	\$ 25,145	\$ 22,187	\$ 16,526	\$ 14,048	\$ 12,395	\$ 21,775	\$ 18,509	\$ 15,242	36%
Quick Service Restaurant (Casual, Delivery, Drive-up, Fast Casual, Fast Food, Take Away, Virtual)	\$ 31,002	\$ 26,351	\$ 23,251	\$ 17,320	\$ 14,722	\$ 12,990	\$ 26,295	\$ 22,351	\$ 18,406	18%

Consolidating Into either Multi-Tenant or Free-Standing Retail

Separate for higher impact uses (Grocery & Quick Service)

Free Standing: One End User = 75% or More of overall Building Sq. Ft.

Quick Service: Non-Sit Down Table Service (No server to order food or hostess to seat you)

DRAFT NON-RES MMTM / MOBILITY FEE

Draft Alachau County Mobility Fee	Draft Mobility Fee (Western AC)			Draft Mobility Fee (Eastern AC)			Currently Adopted MMTM			Percent Increase
Use Categories, Use Classifications, and Representative Uses	NON TND/TOD	TND	TOD	NON TND/TOD	TND	TOD	NON TND/TOD	TND	TOD	NON TND/TOD
Non-Residential (NR) per Unit of Measure (All Uses, except Overnight Lodging & Mobile Residence, Fees = Retail Building fee per Sq. Ft. fee plus NR fee per Unit of Measure)										
Financial Service Drive-Thru Lane or Free-Standing ATM per Lane or ATM	\$ 25,212	\$ 21,431	\$ 18,910	\$ 14,085	\$ 11,973	\$ 10,564	\$ 20,519	\$ 17,441	\$ 14,364	23%
Overnight Lodging per Room	\$ 5,437	\$ 4,623	\$ 4,080	\$ 3,038	\$ 2,583	\$ 2,279	\$ 4,708	\$ 3,767	\$ 2,825	15%
Mobile Residence (RV, Travel Trailer, Tiny Home on Wheels) per Lot or Space	\$ 2,572	\$ -	\$ -	\$ 1,437	\$ -	\$ -	--	--	--	--
Motor Vehicle & Boat Cleaning (Detailing, Wash, Wax) per Two Finishing Stations & per Tunnel	\$ 9,662	\$ 8,212	\$ 7,247	\$ 5,398	\$ 4,588	\$ 4,048	\$ 6,858	\$ 5,541	\$ 4,563	41%
Motor Vehicle Charging or Fueling per Charging Station & per Fueling Position	\$ 20,406	\$ 17,345	\$ 15,304	\$ 11,400	\$ 9,690	\$ 8,550	\$ 33,085	\$ 28,123	\$ 23,160	23%
Motor Vehicle Service (Maintenance, Quick Lube, Service, Tires) per Service Bay	\$ 7,966	\$ 6,770	\$ 5,974	\$ 4,450	\$ 3,782	\$ 3,338	\$ 6,243	\$ 5,254	\$ 4,327	28%
Pharmacy Drive-Thru per Lane	\$ 14,468	\$ 12,297	\$ 10,851	\$ 8,083	\$ 6,870	\$ 6,062	\$ 14,897	\$ 12,662	\$ 10,428	--
Quick Service Restaurant Drive-Thru per Lane	\$ 36,840	\$ 31,314	\$ 27,630	\$ 20,581	\$ 17,494	\$ 15,436	\$ 26,295	\$ 22,351	\$ 18,406	--

Added Mobile Residence. Additive Fees: Building plus unit of measure

MOBILITY FEE INCREASES

- (1) REASONABLE GIVEN LAST UPDATE**
- (2) TRIP GENERATION MANUAL UPDATED 3X SINCE LAST UPDATE**
- (3) UPDATED COST ESTIMATES & CAPACITIES**
- (4) ADDITIONAL PROJECTS CONSIDERED**
- (5) EVALUATING LAND USE CHANGES**
- (6) IDENTIFY ADDITIONAL FUNDING**
- (7) EXTRAORDINARY CIRCUMSTANCES - OPTION**
- (8) PHASE-IN PER FLORIDA STATUTE: 25% OR LESS = 2 Years 25.1% to 50% = 4 Years**
- (9) ALL FEES NOW LESS THAN 50%**
- (10) ALTERNATIVE PHASE-IN: PHASE IN ALL FEES OVER 4 YEARS**
- (11) STATUS OF MMTM VS MOBILITY FEES – NO MMTM AGREEMENT REQUIRED**
- (12) POTENTIAL SQ FT INCREASE**

MMTM / MOBILITY FEE UPDATE

QUESTIONS, COMMENTS, DISCUSSION