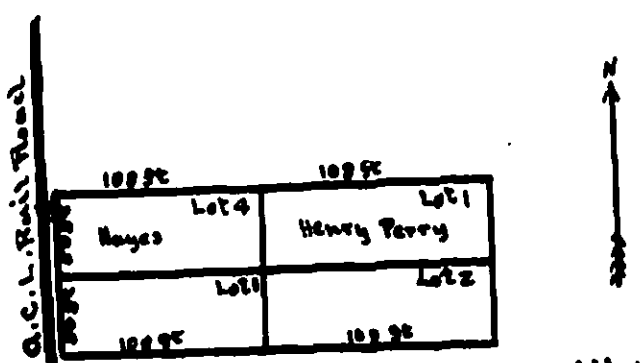
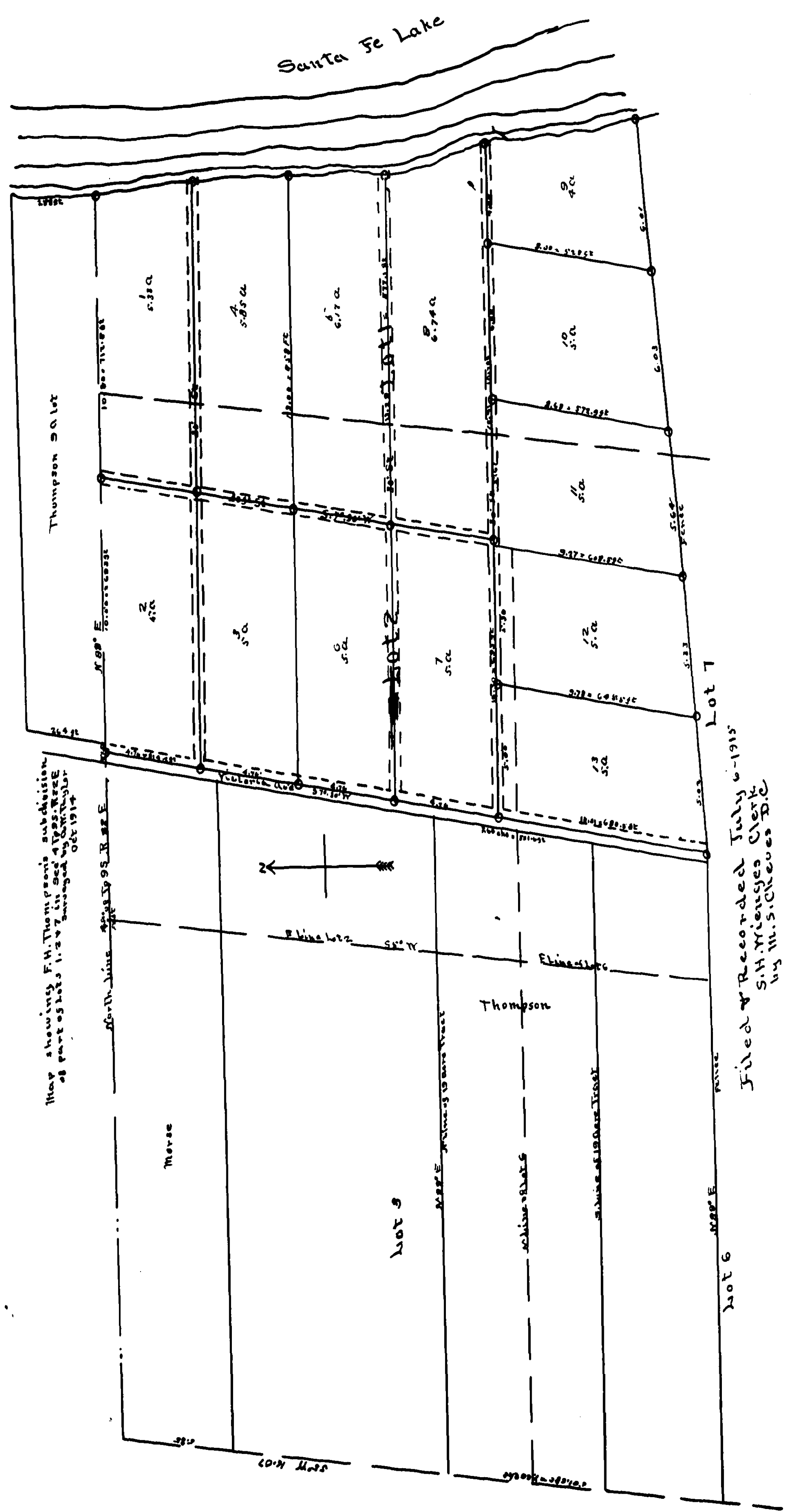


Smithers Survey of Sections 21 and 20  
Tp 10 S. R. 19 E



Polly Terry's subdivision of Lot 20 of Hills Addition to  
Chimneyville Pl. Measurement 100 feet from North to South & 25 ft from  
East to West. Terry's deed from L.H. Hill only calls for 125 feet from  
East to West. Measurements for above plat was given by Henry Terry  
in 1908. Each lot measured 25 ft wide & 100 ft long in the N.T.P. 10 S. R. 20 E

Filed and Recorded August 20<sup>th</sup> 1915 S.H. Wiegand Clerk



Map showing F.H. Thompson's subdivision  
of part of lots 1, 2 & 3 in Sec 21, T10 S. R. 19 E  
as per plat recorded by S.H. Wiegand  
Oct 1914

Filed & Recorded July 6-1915  
S.H. Wiegand Clerk  
by M.S. Cheves D.C.