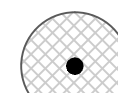







LEGEND

-  EXISTING TREES TO REMAIN
-  (BN) RIVER BIRCH
-  (IAE) EAST PALATKA HOLLY
-  (JS) SOUTHERN RED CEDAR
-  (MC) WAX MYRTLE
-  (MGB) BRACKENS BROWN BEAUTY MAGNOLIA

GENERAL NOTES

ALL ASPHALT, LIMESTONE, AND CONSTRUCTION DEBRIS SHALL BE REMOVED FROM PLANTING BEDS AND SOD AREAS PRIOR TO LANDSCAPE INSTALLATION. IF ENCOUNTERED DURING CONSTRUCTION OR INSTALLATION, THESE SHALL BE EXCAVATED AND REMOVED FROM THE SITE. PLANTING DEPTH OF SOIL IN SUCH AREAS SHOULD BE AT LEAST 3'. IF FILL MUST BE ADDED, IT MUST BE FLORIDA CLEAN DEEP FILL (FREE OF WEED SEEDS) WITH pH 6.0 - 7.5.

ALL LANDSCAPED AREAS SHALL BE MULCHED WITH 3" THICKNESS OF MULCH. PINE BARK MULCH SHALL BE USED IN ALL AREAS, EXCEPT RETENTION AREAS. PINE STRAW MULCH SHALL BE USED IN RETENTION AREAS.

NEW TREES OUTSIDE OF MULCHED LANDSCAPED BEDS WILL BE PROTECTED FROM MOWER AND STRING TRIMMER DAMAGE WITH 10" OF PLASTIC DRAIN TUBING.

LEADER SHOOTS AND MAIN STRUCTURAL LIMBS OF TREES SHALL NOT BE TOPPED OR PRUNED. TREES WILL BE STAKED AS NEEDED. GUYLINES WILL BE OF NON-SYNTHETIC BIODEGRADABLE MATERIAL.

AN INSPECTION OF TREES AND TREE BARRICADES IS REQUIRED BY ALACHUA COUNTY FORESTER/LANDSCAPING INSPECTOR PRIOR TO COMMENCEMENT OF CONSTRUCTION. CONTACT ARBORIST STAFF AT 352-374-5243 EXT. 3503. REFER TO CIVIL PLANS FOR TREE BARRICADE DETAILS AND INFORMATION.

NO CERTIFICATE OF OCCUPANCY WILL BE ISSUED UNTIL THE COUNTY HAS GRANTED FINAL APPROVAL AND ACCEPTANCE OF THE INSTALLED LANDSCAPING AS WELL AS THE PROTECTION OF EXISTING NATIVE VEGETATION SHOWN TO REMAIN ON THE DRC APPROVED PLAN. FINAL APPROVAL SHALL INCLUDE AN AS-BUILT LANDSCAPE PLAN CERTIFICATION FROM A REGISTERED LANDSCAPE ARCHITECT CERTIFYING THAT THE LANDSCAPE IS INSTALLED AND FUNCTIONING AS INTENDED AND THAT DISCOURAGED NON-NATIVE VEGETATION HAS BEEN REMOVED.

INVASIVE EXOTIC PLANT MATERIAL

ALL INVASIVE PLANT SPECIES TO BE REMOVED FROM SITE PRIOR TO ISSUANCE OF THE CERTIFICATE OF OCCUPANCY.

PLANT MATERIAL

ALL PLANT MATERIAL TO BE FLORIDA NO.1 OR BETTER, GRADED IN ACCORDANCE WITH THE STATE OF FLORIDA DEPARTMENT OF AGRICULTURE, DIVISION OF PLANT INDUSTRY'S 'GRADES AND STANDARDS FOR NURSERY PLANTS', CURRENT EDITION AT THE TIME PLANS ARE ISSUED.

PLANT QUANTITIES SHOWN ARE FOR PERMITTING PURPOSES ONLY. IT IS THE RESPONSIBILITY OF THE CONTRACTOR TO CONFIRM ALL QUANTITIES SHOWN ON THE PLAN.

GRASSING

ALL DISTURBED AND UNPAVED AREAS, INCLUDING THE ADJACENT RIGHT OF WAY, TO BE GRASSED WITH SOD FREE OF NOXIOUS WEEDS AND TROPICAL SODA APPLE OR SEEDED AND MULCHED, UNLESS OTHERWISE NOTED. SEE CIVIL SITE PLANS FOR ADDITIONAL RELATED INFORMATION.

TREE MITIGATION

NO TREES ARE PROPOSED TO BE REMOVED FROM THIS PROJECT AREA.

IRRIGATION NOTES

A TEMPORARY OR PERMANENT AUTOMATIC IRRIGATION SYSTEM IS REQUIRED FOR ALL NEW REQUIRED LANDSCAPING INSTALLED [407.46(A)]. TEMPORARY IRRIGATION SYSTEMS MUST BE REMOVED ONCE THE PLANTS ARE ESTABLISHED OR WITHIN ONE YEAR, WHICHEVER OCCURS FIRST. PRIOR TO THE INSTALLATION OF A NEW PERMANENT IRRIGATION SYSTEM OR SUBSTANTIAL MODIFICATION TO AN EXISTING SYSTEM, AN IRRIGATION PLAN MUST BE SUBMITTED TO AND APPROVED BY THE ALACHUA COUNTY ENVIRONMENTAL PROTECTION DEPARTMENT THROUGH CITIZENSERVE. THE IRRIGATION SYSTEM SHALL COMPLY WITH THE LANDSCAPE IRRIGATION DESIGN AND MAINTENANCE STANDARDS FOUND IN ARTICLE VI OF PART II, TITLE 7, CHAPTER 77 OF THE ALACHUA COUNTY CODE, WHICH, AMONG ADDITIONAL DESIGN STANDARDS, LIMIT IRRIGATION TO 50% OF THE PERMEABLE AREA. FOR MORE INFORMATION, VISIT THE IRRIGATION DESIGN STANDARDS WEBSITE OR CONTACT THE ALACHUA COUNTY ENVIRONMENTAL PROTECTION DEPARTMENT AT 352-264-6800.

ALL NEWLY PLANTED TREES SHALL HAVE INDIVIDUAL LOW FLOW OR MICRO-IRRIGATION SUPPLIES [407.46(A)3]. ALL IRRIGATION SYSTEMS ARE REQUIRED TO HAVE A FUNCTIONING RAINFALL SHUTOFF DEVICE SET TO ACTIVE EVEN DURING ESTABLISHMENT, PER [407.46(G)4].

FINAL DEVELOPMENT REVIEW CHECKLIST

XIII. LANDSCAPE PLAN, NOTES & CALCULATIONS

- TREE PLANTING DETAIL
- TREE PROTECTION DETAIL
- LEGEND
- GENERAL NOTES, MATERIAL, GRASSED AREAS, IRRIGATION
- TREE CANOPY DATA & CALCULATIONS, INCLUDING:
  - 20% RETENTION OF THE EXISTING TREE CANOPY (ULDC 406.12 (a) 3)
  - 50% OF PARKING AREAS UNDER CANOPY @ 20 YRS (ULDC 407.43 (d) 3 h.)
  - 30% OF THE SITE UNDER CANOPY WITHIN 20 YEARS (ULDC 406.12 (a) 3)
 (NOTE: TREES WITHIN LOTS OR BUILDING FOOTPRINTS NOT INCLUDED IN CANOPY CALCULATIONS)
- TABULAR LIST OF ALL REGULATED TREES INDICATING THE SPECIES OF TREE, THE DIAMETER AT BREAST HEIGHT, AND IF THE TREE WILL BE KEPT IN PLACE, RELOCATED, REMOVED, OR MITIGATED (ULDC 406.12 (c)2e) - (SUBMITTED AS "TREE AND NATIVE VEGETATION REPORT")
- PROPOSED MITIGATION PLAN (SEE "TREE MITIGATION")
- DEVELOPMENT PLAN SHEET REFERENCE MAP, IF APPLICABLE

XIV. DETAILED LANDSCAPE PLAN (MAXIMUM SCALE 1"=50')

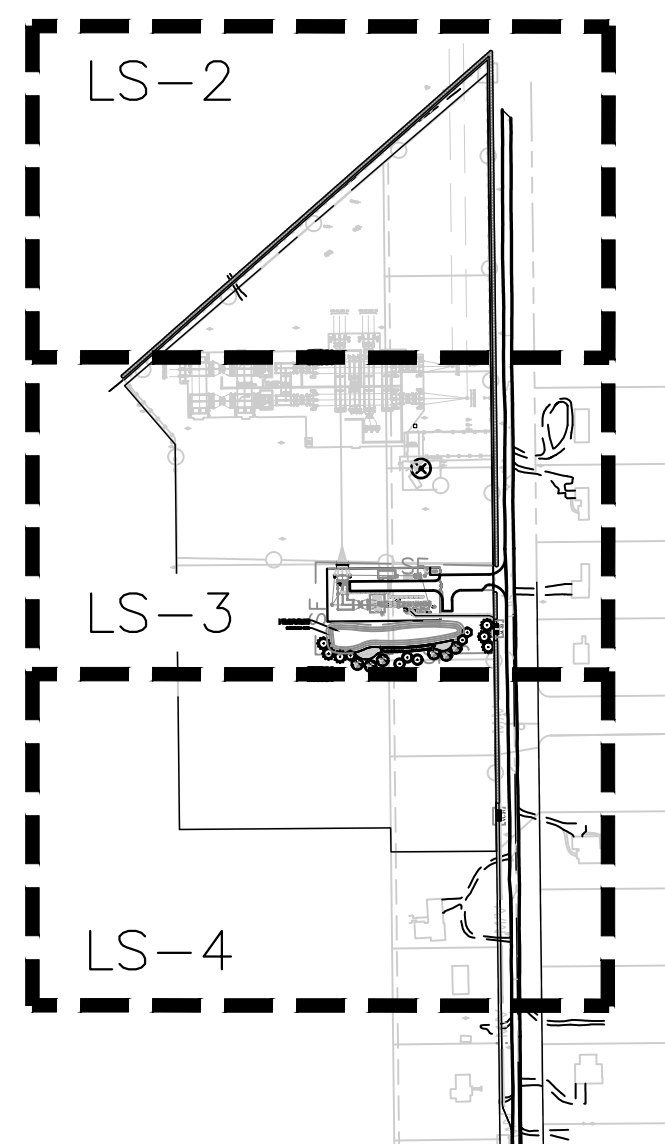
- EXISTING TREE SIZE AND TYPE
- LOCATION AND FIELD TAG NUMBER FOR EACH REGULATED TREE TO REMAIN UNDISTURBED DURING CONSTRUCTION (ULDC 406.12 (c) 2 d)
- LOCATION OF TREES TO BE REMOVED
- PROPOSED TREES AND SHRUBS: LOCATION, TYPE AND NUMBER
- STORMWATER FACILITIES COMPLY WITH ULDC & MPO DESIGN AND LANDSCAPE REQUIREMENTS
- BUFFERS & SCREENING MEET LANDSCAPE REQUIREMENTS OF PD, ACTIVITY CENTER, MASTER PLAN AND ULDC (ULDC 407.43)
- SILT FENCE AND TREE BARRIER LOCATION (ULDC 406.12 (d))
- SHOW PROPOSED FINAL GRADE & CONTOURS
- SHOW LIGHTING AND UTILITIES TO IDENTIFY POTENTIAL CONFLICTS
- LANDSCAPE TO BE PROVIDED FOR DRIVEWAY CONNECTIONS, OFFSITE
- ROADWAY IMPROVEMENTS AND UTILITY EXTENSIONS

LANDSCAPE BUFFER REQUIREMENTS (ULDC 407.43 (b) (SEE SHEET LS-27 FOR MORE INFORMATION))

LOCATION	LENGTH AND TYPE	LANDSCAPE REQUIRED	LANDSCAPE PROVIDED
(PERIMETER BUFFER - NORTH AND EAST)	2,530 LIN. FT. (PER PUBLIC USE PERMIT 1161)	6' WIDE LANDSCAPE BUFFER OF DENSE EVERGREEN FOLIAGE.	2,530 LIN. FT. OF EVERGREEN SHRUBS

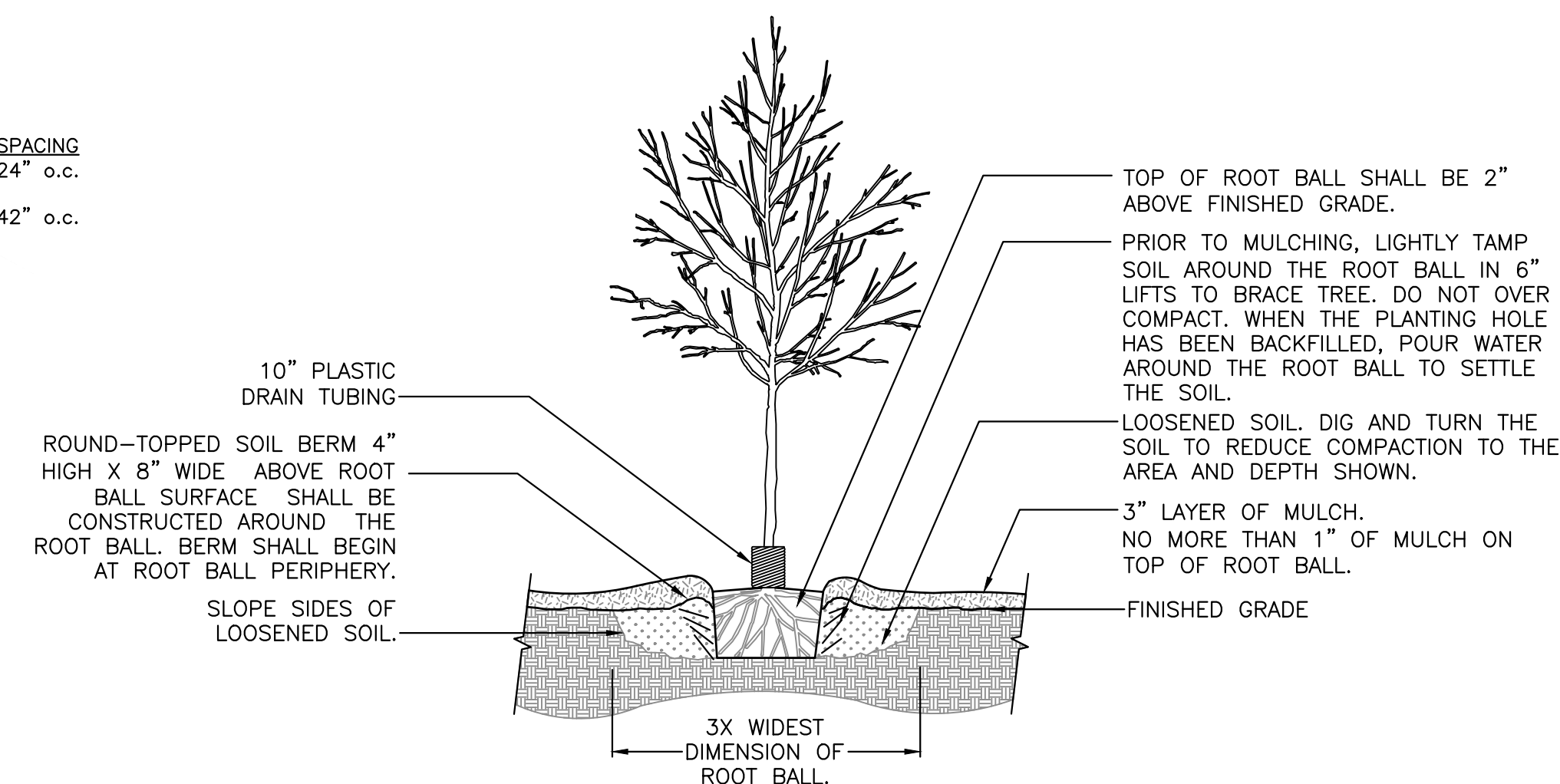
SITE KEY MAP

SCALE: N.T.S.

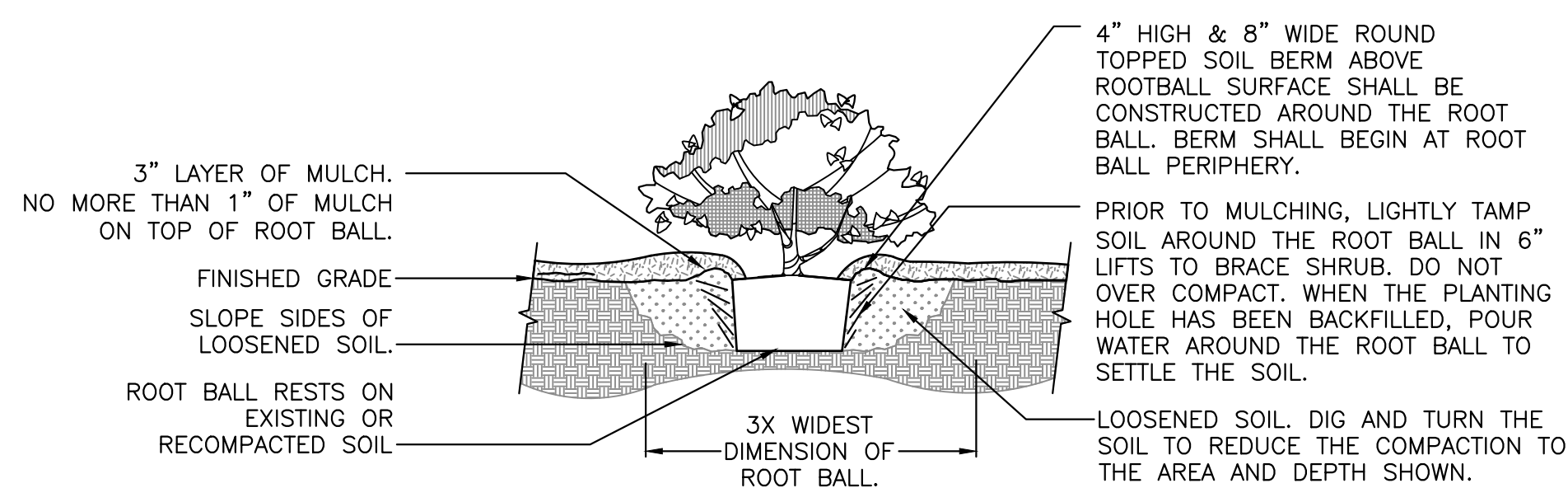


PLANT SCHEDULE

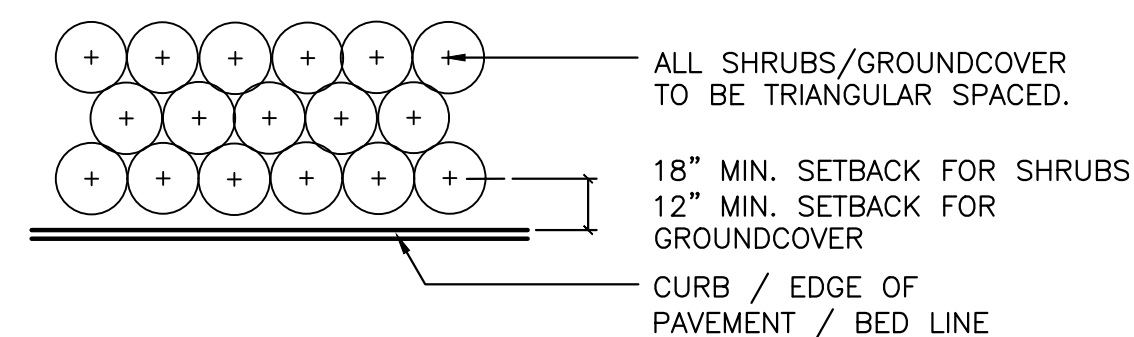
TREES	QTY	BOTANICAL NAME	COMMON NAME	SIZE	
BN	6	BETULA NIGRA 'DURA HEAT'	DURA HEAT RIVER BIRCH	30 GAL, 12' HT, 42" SPR, 2" CAL	
IAE	2	ILEX X ATTENUATA 'EAST PALATKA'	EAST PALATKA HOLLY	30 GAL, 7' HT, 3' SPR, 2" CAL	
JS	6	JUNIPERUS SILICICOLA	SOUTHERN RED CEDAR	30 GAL, 12' HT, 42" SPR, 2" CAL	
MGB	4	MAGNOLIA GRANDIFLORA 'BRACKEN'S BROWN BEAUTY'	BRACKEN'S BROWN BEAUTY MAGNOLIA	30 GAL, 12' HT, 42" SPR, 2" CAL	
SHRUBS	QTY	BOTANICAL NAME	COMMON NAME	SIZE	
MC	381	MYRICA CERIFERA	WAX MYRTLE	3 GAL., 48" HT., X 16" SPR.	
ZF	69	ZAMIA FLORIDANA	COONTIE	3 GAL., 15" HT X 15" HT.	
GROUND COVERS	QTY	BOTANICAL NAME	COMMON NAME	SIZE	SPACING
MU	185	MUHLENBERGIA CAPILLARIS	PINK MUHLY	1 GAL., FULL	24" o.c.
SB	99	SPARTINA BAKERI	SAND CORD GRASS	1 GAL., FULL	42" o.c.
SOD/SEED	QTY	BOTANICAL NAME	COMMON NAME	SIZE	
SOD		PASPALUM NOTATUM 'ARGENTINE'	BAHIA GRASS	WEED FREE AND SAND GROWN SOD	



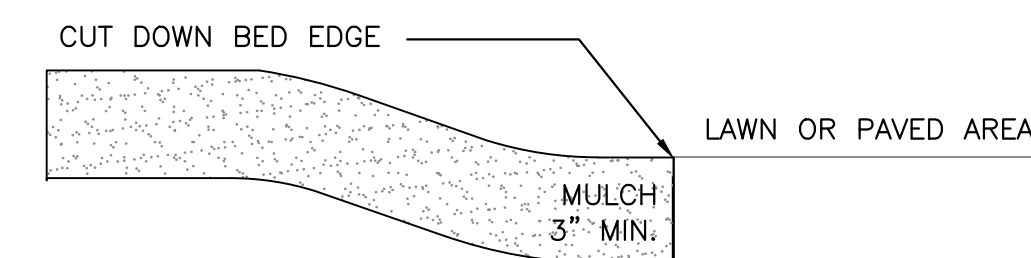
1 TREE PLANTING DETAIL  
SCALE: N.T.S.



2 SHRUB PLANTING DETAIL  
SCALE: N.T.S.




3 SHRUB PLANTING DETAIL  
SCALE: N.T.S.



4 MULCH DETAIL  
SCALE: N.T.S.

NOTE: THE PERIMETER OF ALL CURVED PLANTING BEDS SHALL BE PLANTED WITH A ROW OF SHRUBS AS SHOWN IN THE PLANS AND AT THE SPACING SHOWN IN THE PLANT LIST. INTERIOR PORTIONS OF EACH BED SHALL BE PLANTED AT APPROPRIATE SPACING ACCORDING TO THIS PLANT SPACING DETAIL.

File Name: N:\0223\22-0264\Department\02\_Design\02\_Paving\02\_Paving\02-0264 design base (web).dgn  
 Plot Date: Nov 27, 2023 1:05pm  
 Plot: jhb-mishra



**KNOW WHAT'S BELOW**  
**ALWAYS CALL 811**  
**BEFORE YOU DIG**  
 It's fast, it's free, it's the law.  
 Call 811 two business days before digging

11801 Research Drive  
 Alachua, Florida 32615  
 (352) 351-1976  
 www.chw-fl.com  
 est. 1988 FLORIDA LA0001683

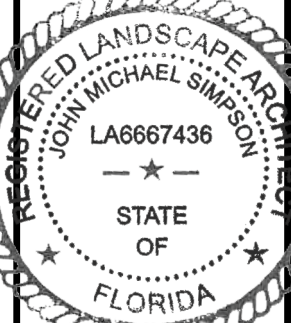
**CHW**  
 Professional Consultants

SCALE: N/A  
 DESIGN SCALE: 1"=20'  
 PLOT SCALE: 1"=20'  
 ORIGINAL DRAWING: 0  
 THIS SHEET: 1  
 THIS SHEET: ADJUST SCALES ACCORDINGLY.

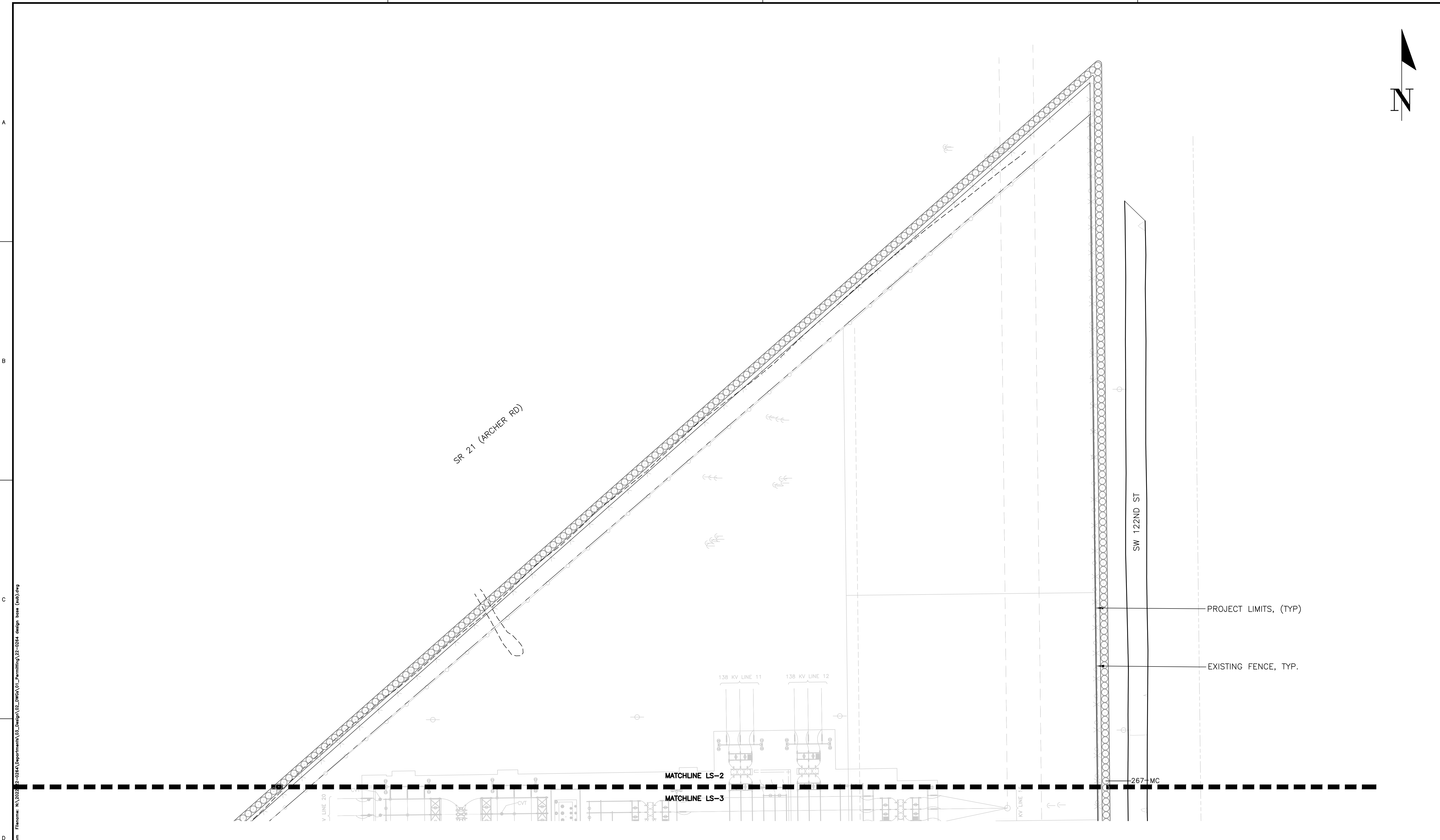
SUBMITTALS:  
 09/06/2023 - SUBMITTAL TO ALACHUA COUNTY  
 10/30/2023 - SUBMITTAL TO ALACHUA COUNTY  
 11/27/2023 - SUBMITTAL TO ALACHUA COUNTY

CLIENT: ORNIX ENERGY  
 PROJECT: SAND BLUES SOLAR SUBSTATION MODIFICATION  
 SHEET TITLE: LANDSCAPE NOTES AND DETAILS  
 SHEET NUMBER: 22-0264

DESIGNER: JMS  
 CHECKER: JMS  
 PROJECT NUMBER: 22-0264



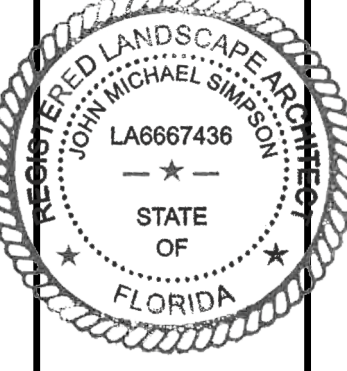
SHEET NO.: LS-1



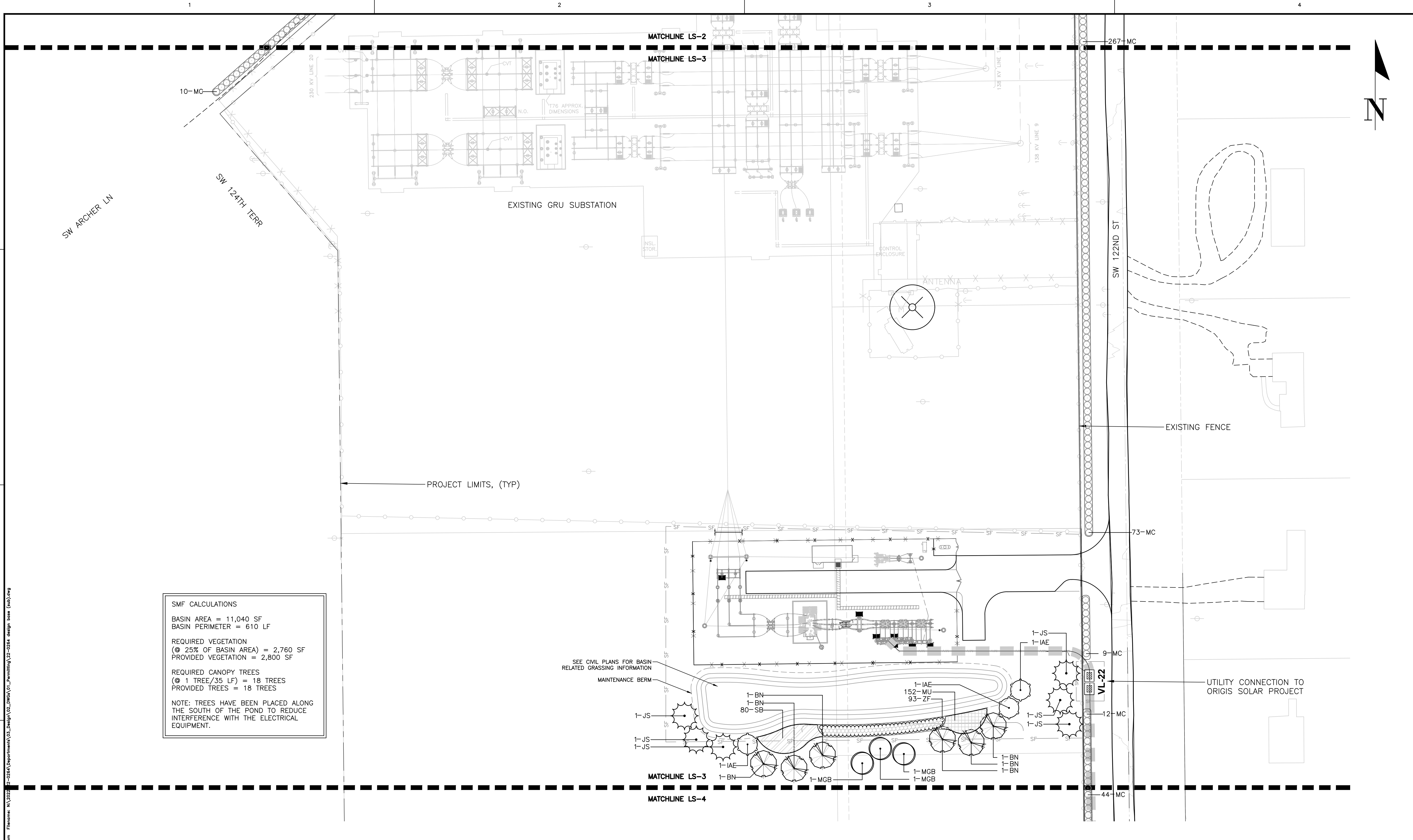
**811**  
 KNOW WHAT'S  
 BELOW  
 ALWAYS CALL 811  
 BEFORE YOU DIG  
 It's fast, it's free, it's the law.  
 Call 811 two business days  
 before digging



<b>CHW</b> Professional Consultants 11801 Research Drive Alachua, Florida 32615 (352) 331-1976 www.chw-inc.com est. 1988 FLORIDA LA0001683	
SCALE: 1"=40' ALL DIMENSIONS BASED ON THE ORIGINAL DRAWING UNLESS OTHERWISE NOTED. THIS SHEET, ADJUST SCALES ACCORDINGLY.	CONSTRUCTION/REVISIONS
SUBMITTALS: 09/06/2023 - SUBMITTAL TO ALACHUA COUNTY 10/30/2023 - SUBMITTAL TO ALACHUA COUNTY 11/27/2023 - SUBMITTAL TO ALACHUA COUNTY	CLIENT: ORIGIS ENERGY PROJECT: SAND BLUES SOLAR 6 SUBSTATION MODIFICATION LANDSCAPE PLAN
DESIGNER: JMS QUALITY CONTROL: JMS	SHEET NUMBER: <b>22-0264</b>
SHEET TITLE: <b>LS-2</b>	



Tech: jmh-mishore For Date: Rev: 27.2023 1:03pm Filename: N:\2022\22-0264\Drawings\02\_Design\02\_DWG\A\01\_Paving\22-0264\_dslg.dwg (web).dwg



**SMF CALCULATIONS**

BASIN AREA = 11,040 SF  
 BASIN PERIMETER = 610 LF

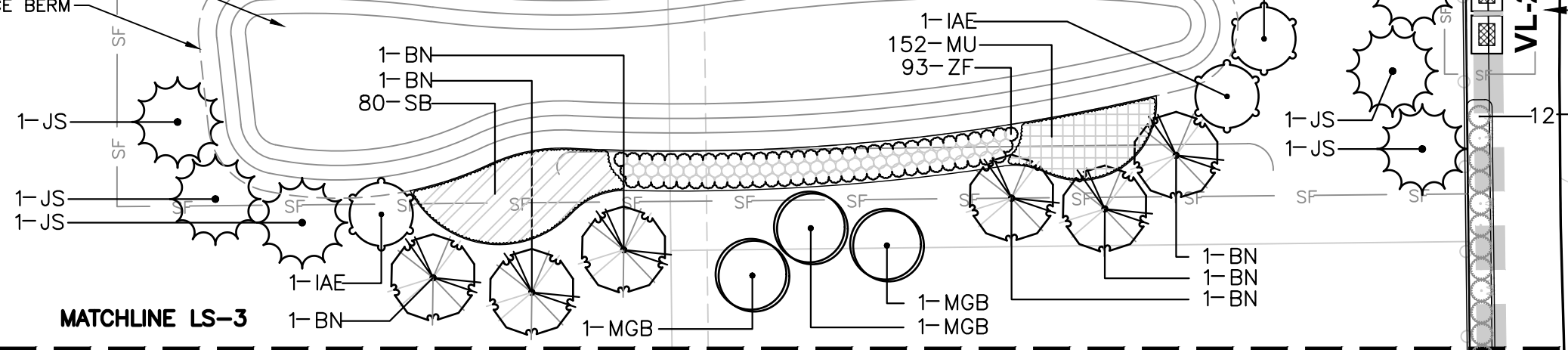
REQUIRED VEGETATION  
 (@ 25% OF BASIN AREA) = 2,760 SF  
 PROVIDED VEGETATION = 2,800 SF

REQUIRED CANOPY TREES  
 (@ 1 TREE/35 LF) = 18 TREES  
 PROVIDED TREES = 18 TREES

NOTE: TREES HAVE BEEN PLACED ALONG THE SOUTH OF THE POND TO REDUCE INTERFERENCE WITH THE ELECTRICAL EQUIPMENT.

SEE CIVIL PLANS FOR BASIN RELATED GRASSING INFORMATION

MAINTENANCE BERM




11801 Research Drive  
 Alachua, Florida 32615  
 (352) 331-1976  
 www.chw-inc.com  
 est. 1988 FLORIDA LA0001683

**CHW**  
 Professional Consultants

SCALE: 1"=40'  
 VERIFY SCALE BY MEASURING ON ORIGINAL DRAWING  
 0" MEASUREMENTS SHALL BE ON THIS SHEET, ADJUST SCALES ACCORDINGLY.

CONSTRUCTION/REV REVISIONS

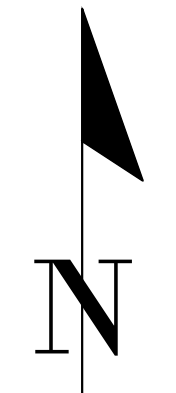
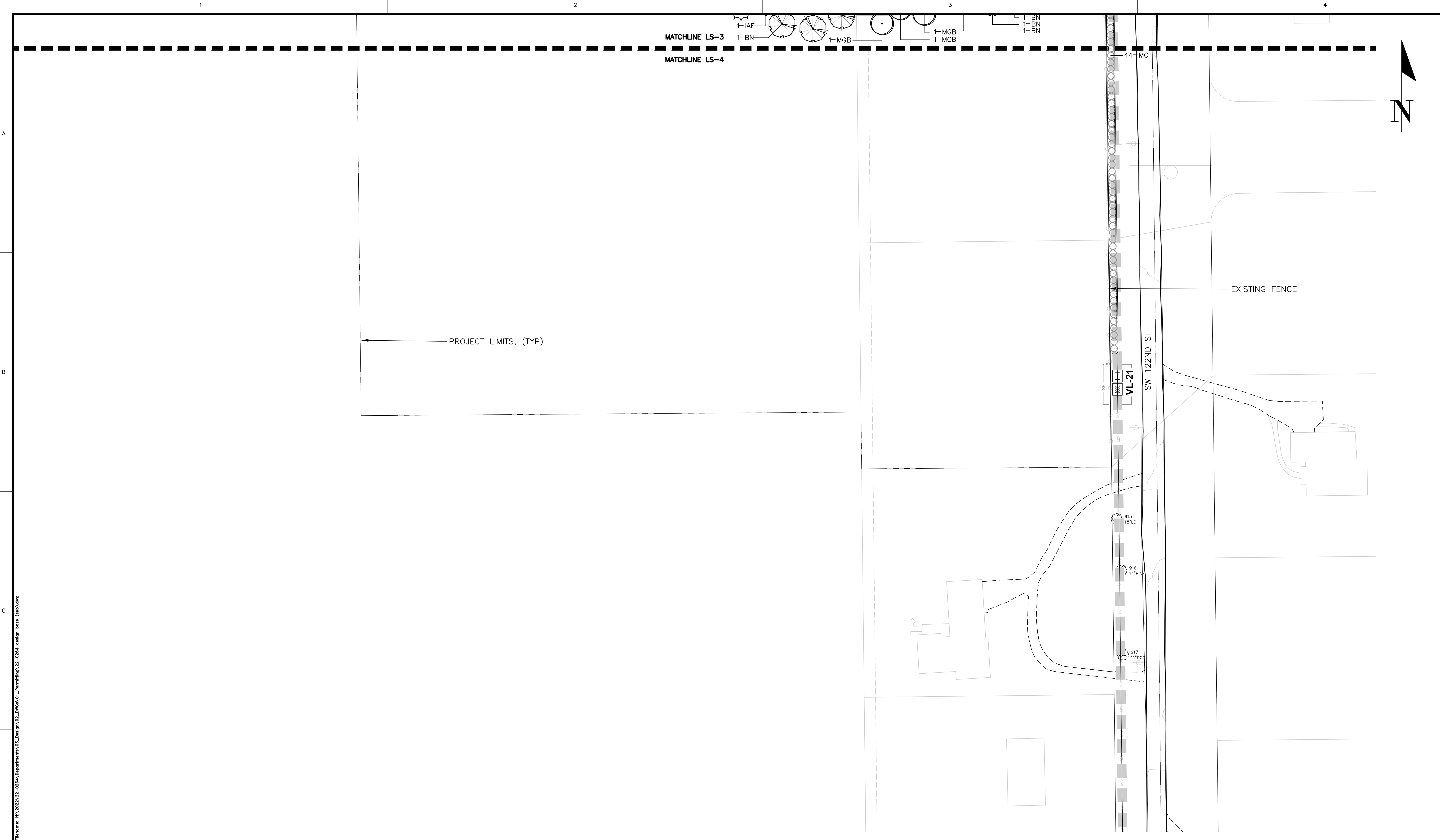
DATE: 09/06/2023 - SUBMITTAL TO ALACHUA COUNTY  
 10/30/2023 - SUBMITTAL TO ALACHUA COUNTY  
 11/27/2023 - SUBMITTAL TO ALACHUA COUNTY

CLIENT: ORIGIS ENERGY  
 PROJECT: SAND BLUES SOLAR SUBSTATION MODIFICATION  
 SHEET TITLE: LANDSCAPE PLAN

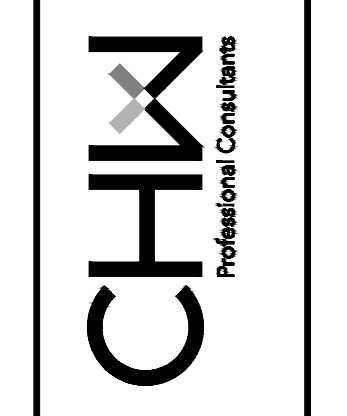
DESIGNER: JMS  
 QUALITY CONTROL: JMS  
 PROJECT NUMBER: 22-0264

REGISTERED LANDSCAPE ARCHITECT  
 JOHN MICHAEL SIMPSON  
 LA6667436  
 STATE OF FLORIDA

SHEET NO.: LS-3



11801 Research Drive  
Alachua, Florida 32615  
(352) 331-1976  
www.chw-inc.com  
est. 1988 FLORIDA  
LA0001683



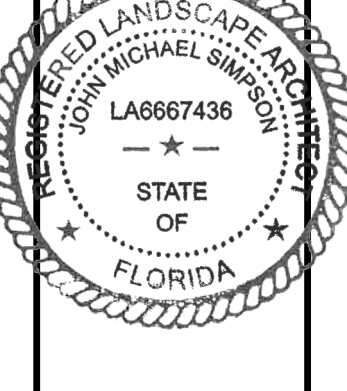
SCALE: 1"=40'  
ALL DIMENSIONS  
BASED ON THE  
ORIGINAL DRAWING  
IF ANY DIMENSIONS  
DO NOT MATCH ON  
THIS SHEET, ADJUST  
SCALES ACCORDINGLY.

CONSTRUCTION/REV REVISIONS

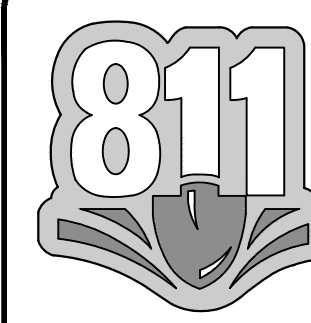
DATE/DESCRIPTION  
09/06/2023 - SUBMITTAL TO ALACHUA COUNTY  
10/30/2023 - SUBMITTAL TO ALACHUA COUNTY  
11/27/2023 - SUBMITTAL TO ALACHUA COUNTY

CLIENT: ORIGIS ENERGY  
PROJECT: SAND BLUES SOLAR SUBSTATION  
MODIFICATION  
SHEET TITLE: LANDSCAPE PLAN

DESIGNER: JMS  
QUALITY CONTROL: JMS  
PROJECT NUMBER: 22-0264



SHEET NO: LS-4



KNOW WHAT'S  
BELOW  
ALWAYS CALL 811  
BEFORE YOU DIG  
It's fast, it's free, it's the law.  
Call 811 two business days  
before digging



Tech: John-mishore For Date: Rev: 2/2/2023 1:03pm Filename: N:\022\22-0264\Department\02\_Design\02\_Paving\02\_Paving\22-0264 design base (tbl).dwg