

REQ.23/24

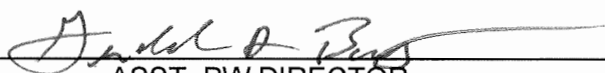
REQUISITION FORM FY 23/24

DATE PREPARED: 11/29/2023  
 REQ. CONTACT PERSON: Ashlee Wilson  
 REASON: Replace WM210  
 VENDOR # OR NAME: Alan Jay Fleet Sales  
 CONTACT & TEL: Ashlee Wilson 863-402-4234 Mobile 863-273-1105  
 EMAIL ADDRESS: ashlee.wilson@alanjay.com  
 VENDOR ADDRESS: 2003 U.S. 27 South Sebring,FL.33870  
 SHIP TO: PW-WC-LA-FT (CIRCLE ONE)  
 DELIVER BY DATE: 9/30/2024

ITEM DESCRIPTION:  
 LINE #1: 2024 FORD F-250 CREW CAB 2WD 6.5 BED 160" WB  
SEE ATTACHED QUOTE

QTY.: 1  
 ORDER UOM: \_\_\_\_\_  
 UNIT COST: 52,846.00 TOTAL REQ. AMT. \$52,846.00

ACCOUNT# \_\_\_\_\_

APPROVED:  11/30/23  
 ASST. PW DIRECTOR DATE

CAPITAL OUTLAY # \_\_\_\_\_

APPROVED: \_\_\_\_\_  
 DIRECTOR DATE

FISCAL ASST: \_\_\_\_\_  
 DATE

COMMENTS: Replacement for WM210

Call Us first, for all of your Fleet Automotive, & Light Truck needs.

Quote

PHONE (800) ALANJAY (252-6529)		DIRECT 863-402-4234	WWW.ALANJAY.COM	50455-1
Corporate Office	2003 U.S. 27 South Sebring, FL 33870	MOBILE 863-273-1105	Mailing Address	P.O. BOX 9200 Sebring, FL 33871-9200
		FAX 863-402-4221		

ORIGINAL QUOTE DATE  
11/27/2023

## QUICK QUOTE SHEET

REVISED QUOTE DATE  
11/27/2023

REQUESTING AGENCY	ALACHUA COUNTY BOARD OF COUNTY COMMISSIONERS			
CONTACT PERSON	BRIAN LOCKLEAR	EMAIL	CLOCKLEAR@alachuacounty.us	
PHONE	352-681-7497	MOBILE	386-462-1975	FAX 386-418-0331

### CONTRACT NUMBER 5179 - 2024 CITY OF TALLAHASSEE

MODEL	W2A 600A	MSRP	\$51,630.00
2024 FORD F-250 CREW CAB 2WD XL 6.5' BED 160" WB			
CUSTOMER ID	GOVERNMENT PRICE		\$48,651.00

**BED LENGTH** 6.5' BED

**\*\* All vehicles will be ordered white w/ darkest interior unless clearly stated otherwise on purchase order.**

FACTORY OPTIONS	DESCRIPTION	
Z1	Oxford White	\$0.00
AS	Medium Dark Slate, HD Vinyl 40/20/40 Split Bench Seat	\$0.00
99A	Engine: 6.8L 2V DEVCT NA PFI V8 Gas	\$0.00
44F	Transmission: TorqShift-G 10-Speed Automatic	\$0.00
153	OPTIONS Front License Plate Bracket	\$0.00
18B	Platform Running Boards	\$445.00
600A	Order Code 600A	\$0.00
TD8	Tires: LT245/75Rx17E BSW A/S	\$0.00
X3E	Electronic-Locking w/3.73 Axle Ratio	\$430.00
RKE	Proximity Key For Doors And Push Button Start Remote Keyless Entry w/Integrated Key Transmitter, Illuminated Entry and Panic Button Remote Releases -Inc: Mechanical Fuel	\$0.00
PW PL	Power Windows & Locks (Incl)	\$0.00
BT	BLUE TOOTH (STD)	\$0.00

AFTERMARKET OPTIONS	DESCRIPTION	FACTORY OPTIONS	\$875.00
EWD	EXTENDED WARRANTY DECLINED		\$0.00
TK DEFENDER-SB	Topper King Defender Fiberglass Cab High topper with sliding glass sides for short bed pickups.		\$3,075.00
3BLS	3rd brake light safety pulse (Pulses 3rd brake light (4) times upon application of brake pedal to increase driver awareness behind you when stopping)		\$200.00
TEMP-TAG	Temporary tag		\$45.00
AFTERMARKET OPTIONS			\$3,320.00

TRADE IN	TOTAL COST	\$52,846.00
YES WE TAKE TRADE INS ~~~~ ASK ABOUT MUNICIPAL FINANCING ~~~~		\$0.00

TOTAL COST LESS TRADE IN(S) QTY 1 \$52,846.00

Estimated Annual payments for 60 months paid in advance: \$11,835.33  
Municipal finance for any essential use vehicle, requires lender approval, WAC.

Comments QUOTE SUBJECT TO FACTORY ORDER ACCEPTANCE or 30 DAYS

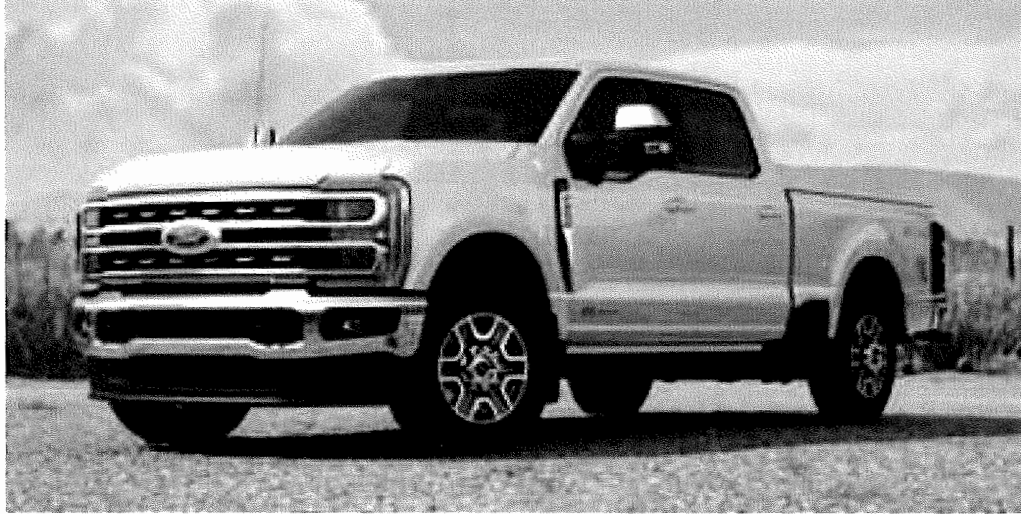
VEHICLE QUOTED BY ASHLEE WILSON GOVERNMENT ACCOUNT MANAGER Ashlee.Wilson@AlanJay.com  
*"I Want to be Your Fleet Provider"*  
*I appreciate the opportunity to submit this quotation. Please review it carefully. If there are any errors or changes, please feel free to contact me at any time. I am always happy to be of assistance.*



# Alan Jay Fleet

Ashlee Wilson | 863-402-4234 | ashlee.wilson@alanjay.com

Vehicle: [Fleet] 2024 Ford Super Duty F-250 SRW (W2A) XL 2WD Crew Cab 6.75' Box (✔ Complete)



Note: Photo may not represent exact vehicle or selected equipment.

## Window Sticker

### SUMMARY

[Fleet] 2024 Ford Super Duty F-250 SRW (W2A) XL 2WD Crew Cab 6.75' Box

MSRP: \$48,760.00

Interior: Medium Dark Slate, HD Vinyl 40/20/40 Split Bench Seat

Exterior 1: Oxford White

Exterior 2: No color has been selected.

Engine: 6.8L 2V DEVCT NA PFI V8 Gas

Transmission: TorqShift-G 10-Speed Automatic

### OPTIONS

CODE	MODEL	MSRP
W2A	[Fleet] 2024 Ford Super Duty F-250 SRW (W2A) XL 2WD Crew Cab 6.75' Box	\$48,760.00
<b>OPTIONS</b>		
153	Front License Plate Bracket	\$0.00
18B	Platform Running Boards	\$445.00
44F	Transmission: TorqShift-G 10-Speed Automatic	\$0.00
600A	Order Code 600A	\$0.00
99A	Engine: 6.8L 2V DEVCT NA PFI V8 Gas	\$0.00
AS	Medium Dark Slate, HD Vinyl 40/20/40 Split Bench Seat	\$0.00

This document contains information considered Confidential between GM and its Clients uniquely. The information provided is not intended for public disclosure. Prices, specifications, and availability are subject to change without notice, and do not include certain fees, taxes and charges that may be required by law or vary by manufacturer or region. Performance figures are guidelines only, and actual performance may vary. Photos may not represent actual vehicles or exact configurations. Content based on report preparer's input is subject to the accuracy of the input provided.

Data Version: 21061. Data Updated: Nov 26, 2023 6:39:00 PM PST.



# Alan Jay Fleet

Ashlee Wilson | 863-402-4234 | ashlee.wilson@alanjay.com

Vehicle: [Fleet] 2024 Ford Super Duty F-250 SRW (W2A) XL 2WD Crew Cab 6.75' Box (✔ Complete)

TD8	Tires: LT245/75Rx17E BSW A/S	\$0.00
X3E	Electronic-Locking w/3.73 Axle Ratio	\$430.00
Z1	Oxford White	\$0.00
<hr/>		
	<b>SUBTOTAL</b>	<b>\$49,635.00</b>
	Adjustments Total	\$0.00
	Destination Charge	\$1,995.00
	<b>TOTAL PRICE</b>	<b>\$51,630.00</b>

## FUEL ECONOMY

Est City:N/A

Est Highway:N/A

Est Highway Cruising Range:N/A

This document contains information considered Confidential between GM and its Clients uniquely. The information provided is not intended for public disclosure. Prices, specifications, and availability are subject to change without notice, and do not include certain fees, taxes and charges that may be required by law or vary by manufacturer or region. Performance figures are guidelines only, and actual performance may vary. Photos may not represent actual vehicles or exact configurations. Content based on report preparer's input is subject to the accuracy of the input provided.

Data Version: 21061. Data Updated: Nov 26, 2023 6:39:00 PM PST.



## Alan Jay Fleet

Ashlee Wilson | 863-402-4234 | ashlee.wilson@alanjay.com

Vehicle: [Fleet] 2024 Ford Super Duty F-250 SRW (W2A) XL 2WD Crew Cab 6.75' Box (✔ Complete)

## Standard Equipment

### Mechanical

Engine: 6.8L 2V DEVCT NA PFI V8 Gas -inc: Flex fuel (STD)  
Transmission: TorqShift-G 10-Speed Automatic -inc: SelectShift and selectable drive modes: normal, eco, slippery roads, tow/haul and trail (STD)  
3.73 Axle Ratio (STD)  
GVWR: 10,000 lb Payload Package  
50-State Emissions System  
Transmission w/Oil Cooler  
Rear-Wheel Drive  
78-Amp/Hr 750CCA Maintenance-Free Battery w/Run Down Protection  
160 Amp Alternator  
Class V Towing Equipment -inc: Hitch, Brake Controller and Trailer Sway Control  
Trailer Wiring Harness  
3922# Maximum Payload  
HD Shock Absorbers  
Front Anti-Roll Bar  
Firm Suspension  
Hydraulic Power-Assist Steering  
34 Gal. Fuel Tank  
Single Stainless Steel Exhaust  
Front Suspension w/Coil Springs  
Solid Axle Rear Suspension w/Leaf Springs  
4-Wheel Disc Brakes w/4-Wheel ABS, Front And Rear Vented Discs, Brake Assist and Hill Hold Control

### Exterior

Wheels: 17" Argent Painted Steel -inc: painted hub covers/center ornaments  
Tires: LT245/75R17E BSW A/S -inc: Spare may not be the same as road tire (STD)  
Regular Box Style  
Steel Spare Wheel  
Full-Size Spare Tire Stored Underbody w/Crankdown  
Clearcoat Paint  
Black Front Bumper w/Black Rub Strip/Fascia Accent and 2 Tow Hooks

This document contains information considered Confidential between GM and its Clients uniquely. The information provided is not intended for public disclosure. Prices, specifications, and availability are subject to change without notice, and do not include certain fees, taxes and charges that may be required by law or vary by manufacturer or region. Performance figures are guidelines only, and actual performance may vary. Photos may not represent actual vehicles or exact configurations. Content based on report preparer's input is subject to the accuracy of the input provided.

Data Version: 21061. Data Updated: Nov 26, 2023 6:39:00 PM PST.



## Alan Jay Fleet

Ashlee Wilson | 863-402-4234 | ashlee.wilson@alanjay.com

Vehicle: [Fleet] 2024 Ford Super Duty F-250 SRW (W2A) XL 2WD Crew Cab 6.75' Box (✔ Complete)

### Exterior

Black Rear Step Bumper  
Black Side Windows Trim and Black Front Windshield Trim  
Black Door Handles  
Black Power Heated Side Mirrors w/Convex Spotter, Manual Folding and Turn Signal Indicator  
Manual Extendable Trailer Style Mirrors  
Fixed Rear Window  
Light Tinted Glass  
Variable Intermittent Wipers  
Aluminum Panels  
Black Grille  
Tailgate Rear Cargo Access  
Tailgate/Rear Door Lock Included w/Power Door Locks  
Boxside Steps  
Autolamp Auto On/Off Aero-Composite Halogen Daytime Running Lights Preference Setting Headlamps w/Delay-Off  
Cargo Lamp w/High Mount Stop Light  
Perimeter/Approach Lights

### Entertainment

Radio w/Seek-Scan, Clock and Speed Compensated Volume Control  
Radio: AM/FM Stereo w/MP3 Player -Inc: 4 speakers  
Fixed Antenna  
SYNC 4 -Inc: 8" LCD capacitive touchscreen w/wipe capability, wireless phone connection, cloud connected, AppLink w/app catalog, 911 Assist, Apple CarPlay and Android Auto compatibility and digital owner's manual  
2 LCD Monitors In The Front

### Interior

4-Way Driver Seat -Inc: Manual Recline and Fore/Aft Movement  
4-Way Passenger Seat -Inc: Manual Recline and Fore/Aft Movement  
60-40 Folding Split-Bench Front Facing Fold-Up Cushion Rear Seat  
Manual Tilt/Telescoping Steering Column  
Gauges -Inc: Speedometer, Odometer, Oil Pressure, Engine Coolant Temp, Tachometer, Transmission Fluid Temp, Engine Hour Meter, Trip Odometer and Trip Computer  
Power Rear Windows

This document contains information considered Confidential between GM and its Clients uniquely. The information provided is not intended for public disclosure. Prices, specifications, and availability are subject to change without notice, and do not include certain fees, taxes and charges that may be required by law or vary by manufacturer or region. Performance figures are guidelines only, and actual performance may vary. Photos may not represent actual vehicles or exact configurations. Content based on report preparer's input is subject to the accuracy of the input provided.  
Data Version: 21061. Data Updated: Nov 26, 2023 6:39:00 PM PST.



## Alan Jay Fleet

Ashlee Wilson | 863-402-4234 | ashlee.wilson@alanjay.com

Vehicle: [Fleet] 2024 Ford Super Duty F-250 SRW (W2A) XL 2WD Crew Cab 6.75' Box (✔ Complete)

### Interior

- FordPass Connect 5G Mobile Hotspot Internet Access
- Rear Cupholder
- Remote Keyless Entry w/Integrated Key Transmitter, Illuminated Entry and Panic Button
- Cruise Control w/Steering Wheel Controls
- Manual Air Conditioning
- HVAC -inc: Underseat Ducts
- Illuminated Locking Glove Box
- Interior Trim -inc: Chrome Interior Accents
- Full Cloth Headliner
- Urethane Gear Shifter Material
- HD Vinyl 40/20/40 Split Bench Seat -inc: center armrest, cupholder, storage and driver's side manual lumbar
- Day-Night Rearview Mirror
- Passenger Visor Vanity Mirror
- Full Overhead Console w/Storage and 2 12V DC Power Outlets
- Fade-To-Off Interior Lighting
- Front And Rear Map Lights
- Full Vinyl/Rubber Floor Covering
- Pickup Cargo Box Lights
- Smart Device Remote Engine Start
- Instrument Panel Covered Bin and Dashboard Storage
- Power 1st Row Windows w/Driver And Passenger 1-Touch Up/Down
- Delayed Accessory Power
- Power Door Locks
- Driver Information Center
- Trip Computer
- Outside Temp Gauge
- Digital/Analog Appearance
- Seats w/Vinyl Back Material
- Manual Adjustable Front Head Restraints and Manual Adjustable Rear Head Restraints
- Securilock Anti-Theft Ignition (pats) Immobilizer
- 2 12V DC Power Outlets

This document contains information considered Confidential between GM and its Clients uniquely. The information provided is not intended for public disclosure. Prices, specifications, and availability are subject to change without notice, and do not include certain fees, taxes and charges that may be required by law or vary by manufacturer or region. Performance figures are guidelines only, and actual performance may vary. Photos may not represent actual vehicles or exact configurations. Content based on report preparer's input is subject to the accuracy of the input provided.

Data Version: 21061. Data Updated: Nov 26, 2023 6:39:00 PM PST.



## Alan Jay Fleet

Ashlee Wilson | 863-402-4234 | ashlee.wilson@alanjay.com

Vehicle: [Fleet] 2024 Ford Super Duty F-250 SRW (W2A) XL 2WD Crew Cab 6.75' Box (✔ Complete)

### Interior

Air Filtration

### Safety-Mechanical

AdvanceTrac w/Roll Stability Control Electronic Stability Control (ESC) And Roll Stability Control (RSC)

ABS And Driveline Traction Control

### Safety-Exterior

Side Impact Beams

### Safety-Interior

Dual Stage Driver And Passenger Seat-Mounted Side Airbags

Tire Specific Low Tire Pressure Warning

Safety Canopy System Curtain 1st And 2nd Row Airbags

Outboard Front Lap And Shoulder Safety Belts -inc: Rear Center 3 Point and Height Adjusters

Dual Stage Driver And Passenger Front Airbags

Rear Child Safety Locks

Back-Up Camera

### WARRANTY

Basic Years: 3

Basic Miles/km: 36,000

Drivetrain Years: 5

Drivetrain Miles/km: 60,000

Corrosion Years: 5

Corrosion Miles/km: Unlimited

Roadside Assistance Years: 5

Roadside Assistance Miles/km: 60,000

This document contains information considered Confidential between GM and its Clients uniquely. The information provided is not intended for public disclosure. Prices, specifications, and availability are subject to change without notice, and do not include certain fees, taxes and charges that may be required by law or vary by manufacturer or region. Performance figures are guidelines only, and actual performance may vary. Photos may not represent actual vehicles or exact configurations. Content based on report preparer's input is subject to the accuracy of the input provided.  
Data Version: 21061. Data Updated: Nov 26, 2023 6:39:00 PM PST.





# Alan Jay Fleet

Ashlee Wilson | 863-402-4234 | ashlee.wilson@alanjay.com

Vehicle: [Fleet] 2024 Ford Super Duty F-250 SRW (W2A) XL 2WD Crew Cab 6.75' Box ( Complete )

## Technical Specifications

### Chassis

#### Weight Information

Standard Weight - Front	0.00 lbs	Standard Weight - Rear	0.00 lbs
Base Curb Weight	6041 lbs	Gross Axle Wt Rating - Front	4250 lbs
Gross Axle Wt Rating - Rear	6340 lbs	Curb Weight - Front	3449 lbs
Curb Weight - Rear	2592 lbs	Option Weight - Front	0.00 lbs
Option Weight - Rear	0.00 lbs	Reserve Axle Capacity - Front	801.00 lbs
Reserve Axle Capacity - Rear	3748.00 lbs	As Spec'd Curb Weight	6041.00 lbs
As Spec'd Payload	3959.00 lbs	Maximum Payload Capacity	3959.00 lbs
Gross Combined Wt Rating	21000 lbs	Gross Axle Weight Rating	10590.00 lbs
Curb Weight	6041.00 lbs	Reserve Axle Capacity	4549.00 lbs
Total Option Weight	0.00 lbs	Payload Weight Front	0 lbs
Payload Weight Rear	0 lbs	Gross Vehicle Weight Rating	10000.00 lbs

#### Trailerling

Dead Weight Hitch - Max Trailer Wt.	5000 lbs	Dead Weight Hitch - Max Tongue Wt.	500 lbs
Wt Distributing Hitch - Max Trailer Wt.	14500 lbs	Wt Distributing Hitch - Max Tongue Wt.	1450 lbs
Fifth Wheel Hitch - Max Trailer Wt.	14300 lbs	Fifth Wheel Hitch - Max Tongue Wt.	3575 lbs
Maximum Trailerling Capacity	14500 lbs		

#### Frame

Frame Type	N/A	Sect Modulus Rails Only	N/A
Frame RBM	N/A	Frame Strength	N/A
Frame Thickness	N/A		

#### Suspension

Suspension Type - Front	Other	Suspension Type - Rear	Leaf
Spring Capacity - Front	4250 lbs	Spring Capacity - Rear	6340 lbs
Axle Type - Front	Independent	Axle Type - Rear	Rigid Axle
Axle Capacity - Front	5300 lbs	Axle Capacity - Rear	6200 lbs
Axle Ratio (:1) - Front	3.73	Axle Ratio (:1) - Rear	3.73

This document contains information considered Confidential between GM and its Clients uniquely. The information provided is not intended for public disclosure. Prices, specifications, and availability are subject to change without notice, and do not include certain fees, taxes and charges that may be required by law or vary by manufacturer or region. Performance figures are guidelines only, and actual performance may vary. Photos may not represent actual vehicles or exact configurations. Content based on report preparer's input is subject to the accuracy of the input provided.  
 Data Version: 21061. Data Updated: Nov 26, 2023 6:39:00 PM PST.



# Alan Jay Fleet

Ashlee Wilson | 863-402-4234 | ashlee.wilson@alanjay.com

Vehicle: [Fleet] 2024 Ford Super Duty F-250 SRW (W2A) XL 2WD Crew Cab 6.75' Box (✔ Complete)

## Chassis

### Suspension

Shock Absorber Diameter - Front	N/A	Shock Absorber Diameter - Rear	N/A
Stabilizer Bar Diameter - Front	N/A	Stabilizer Bar Diameter - Rear	N/A

### Tires

Front Tire Order Code	TD8	Rear Tire Order Code	TD8
Spare Tire Order Code	N/A	Front Tire Size	LT245/75SR17
Rear Tire Size	LT245/75SR17	Spare Tire Size	Full-Size
Front Tire Capacity	6390 lbs	Rear Tire Capacity	6390 lbs
Spare Tire Capacity	N/A	Revolutions/Mile @ 45 mph - Front	649
Revolutions/Mile @ 45 mph - Rear	649	Revolutions/Mile @ 45 mph - Spare	N/A

### Wheels

Front Wheel Size	17 X 7.5 in	Rear Wheel Size	17 X 7.5 in
Spare Wheel Size	Full-Size in	Front Wheel Material	Steel
Rear Wheel Material	Steel	Spare Wheel Material	Steel

### Steering

Steering Type	Re-Circulating Ball	Steering Ratio (:1), Overall	N/A
Steering Ratio (:1), On Center	N/A	Steering Ratio (:1), At Lock	N/A
Turning Diameter - Curb to Curb	54.7 ft	Turning Diameter - Wall to Wall	N/A

### Brakes

Brake Type	4-Wheel Disc	Brake ABS System	4-Wheel
Brake ABS System (Second Line)	4-Wheel	Disc - Front (Yes or )	Yes
Disc - Rear (Yes or )	Yes	Front Brake Rotor Diam x Thickness	14.3 in
Rear Brake Rotor Diam x Thickness	14.3 in	Drum - Rear (Yes or )	N/A
Rear Drum Diam x Width	N/A		

### Fuel Tank

Fuel Tank Capacity, Approx	34 gal	Aux Fuel Tank Capacity, Approx	N/A
Fuel Tank Location	N/A	Aux Fuel Tank Location	N/A

This document contains information considered Confidential between GM and its Clients uniquely. The information provided is not intended for public disclosure. Prices, specifications, and availability are subject to change without notice, and do not include certain fees, taxes and charges that may be required by law or vary by manufacturer or region. Performance figures are guidelines only, and actual performance may vary. Photos may not represent actual vehicles or exact configurations. Content based on report preparer's input is subject to the accuracy of the input provided.  
 Data Version: 21061. Data Updated: Nov 26, 2023 6:39:00 PM PST.



# Alan Jay Fleet

Ashlee Wilson | 863-402-4234 | ashlee.wilson@alanjay.com

Vehicle: [Fleet] 2024 Ford Super Duty F-250 SRW (W2A) XL 2WD Crew Cab 6.75' Box (✔ Complete)

## Dimensions

### Interior Dimensions

Passenger Capacity	6	Front Head Room	40.8 in
Front Leg Room	43.9 in	Front Shoulder Room	66.7 in
Front Hip Room	62.5 in	Second Head Room	40.4 in
Second Leg Room	43.6 in	Second Shoulder Room	65.9 in
Second Hip Room	64.7 in		

### Exterior Dimensions

Wheelbase	160 in	Length, Overall w/o rear bumper	N/A
Length, Overall w/rear bumper	N/A	Length, Overall	250 in
Width, Max w/o mirrors	80 in	Height, Overall	78.3 in
Overhang, Front	38.2 in	Overhang, Rear w/o bumper	N/A
Front Bumper to Back of Cab	N/A	Cab to Axle	39.9 in
Cab to End of Frame	N/A	Ground to Top of Load Floor	35.7 in
Ground to Top of Frame	N/A	Frame Width, Rear	N/A
Ground Clearance, Front	8.7 in	Ground Clearance, Rear	8.7 in
Body Length	0.00 ft	Cab to Body	N/A

### Cargo Area Dimensions

Cargo Box Length @ Floor	81.9 in	Cargo Box Width @ Top, Rear	66.9 in
Cargo Box Width @ Floor	66.9 in	Cargo Box Width @ Wheelhousings	50.5 in
Cargo Box (Area) Height	21.1 in	Tailgate Width	60.5 in
Cargo Volume	65.4 ft <sup>3</sup>	Ext'd Cab Cargo Volume	N/A

This document contains information considered Confidential between GM and its Clients uniquely. The information provided is not intended for public disclosure. Prices, specifications, and availability are subject to change without notice, and do not include certain fees, taxes and charges that may be required by law or vary by manufacturer or region. Performance figures are guidelines only, and actual performance may vary. Photos may not represent actual vehicles or exact configurations. Content based on report preparer's input is subject to the accuracy of the input provided.  
 Data Version: 21061. Data Updated: Nov 26, 2023 6:39:00 PM PST.

